



Testing Evaluation Laboratories, Inc.  
 2002 Wood Court Suite 1 – Plant City, FL 33563  
 Phone: 813-754-9887

**AAMA/WDMA/CSA 101/I.S.2/A440-17**

**TEST REPORT SUMMARY**

**Test Report Issued To:**

**Fleetwood Windows and Doors  
 1 Fleetwood Way  
 Corona, CA 92879**

**EDGE Series Sliding Glass Door  
 Impact Resistant**

Title	Summary of Results		
	Specimen 1	Specimen 2	Specimen 3
Primary Product Designator	Class – Not Rated 4572 x 3048 (180 x 120)	Class LC PG75 4572 x 3048 (180 x 120) SD	Class LC PG75 4572 x 3048 (180 x 120) SD
Design Pressure	NA	+3591 /- 3591 Pa (+75.0/ - 75.0 psf)	+3591 /- 3591 Pa (+75.0/ - 75.0 psf)
Operating Force	Pass	<i>See Specimen 1 for these results.</i>	<i>See Specimen 1 for these results.</i>
Air Infiltration	0.33 L/s/m <sup>2</sup> (0.065 scfm/ft <sup>2</sup> ) @ 75 Pa (1.57 psf)  0.98 L/s/m <sup>2</sup> (0.196 scfm/ft <sup>2</sup> ) @ 75 Pa (6.24 psf)	<i>See Specimen 1 for these results.</i>	<i>See Specimen 1 for these results.</i>
Air Exfiltration	0.33 L/s/m <sup>2</sup> (0.065 scfm/ft <sup>2</sup> ) @ 75 Pa (1.57 psf)  0.60 L/s/m <sup>2</sup> (0.119 scfm/ft <sup>2</sup> ) @ 75 Pa (6.24 psf)	<i>See Specimen 1 for these results.</i>	<i>See Specimen 1 for these results.</i>
Water Resistance	467 Pa (9.75 psf) w/o sill riser	539 Pa (11.25 psf) with sill riser	<i>See Specimens 1 and 2 for these results.</i>
Structural Test Pressure	NA	+5387/-5387 Pa (+112.5/- 112.5 psf)	+5387/-5387 Pa (+112.5/- 112.5 psf)
Forced Entry	NA	No Entry	No Entry

Reference should be made to Report No. TEL 01993774 for complete test specimen description and data.

For Testing Evaluation Laboratories, Inc.

**Vivian K. Wright,  
 President**



Testing Evaluation Laboratories, Inc.  
2002 Wood Court Suite 1 – Plant City, FL 33563  
Phone: 813-754-9887

## **TEST RESULTS**

IAS Lab Accreditation Number: TL-299

Report No: TEL 01993774  
Test Dates: November 16, 2022  
through October 2, 2023  
Report Date: October 21, 2023  
Record Retention End Date: October 21, 2033

Issued to:

Fleetwood Windows and Doors  
1 Fleetwood Way  
Corona, CA 92879

**Project Summary:** Testing Evaluation Laboratories, Inc. (TEL) was contracted by Fleetwood Windows and Doors to perform tests on the EDGE Series Sliding Glass Door at TEL's Plant City, FL test facility. The samples tested successfully met the performance requirements for the following ratings:

Specimen 1 - Class – Not Rated 4572 x 3048 (180 x 120) – *Tested for Air and Water Results Only*  
Specimen 2 – Class LC PG75 4572 x 3048 (180 x 120) SD  
Specimen 3 – Class LC PG75 4572 x 3048 (180 x 120) SD

Test specimen description and results are reported herein. Samples provided by the client.

Test Specifications: The test specimen was evaluated in accordance with the following:

AAMA/WDMA/CSA 101/I.S.2/A440-17

Test Specimen Description:

Series / Model:	EDGE Series Sliding Glass Door
Type:	Impact Resistant Aluminum Sliding Glass Doors
Overall Size:	4570 mm x 3048 mm (179.94" x 120.0") – XXX – All Specimens
Daylight Opening:	1478 mm x 2881 mm (58.19" x 113.44") – All Panels – All Specimens
Sash Size:	1529 mm x 2942 mm (60.19" x 115.81") – All Specimens
Glazing Detail:	(See attached drawings #L-9826, L-9826a and #L-9826b for details.)
Frame Material:	Aluminum
Finish:	Mill Finish

For Tested Elevation, Vertical Cross Sections, Horizontal Cross Sections, Components, Frame Anchoring, Glazing Detail and Bill of Materials See Attached Drawing #L-9826, L-9826a and #L-9826b.

Test Results: Specimen 1: 4570 mm x 3048 mm (179.94" x 120.0") Aluminum Sliding Glass Door - XXX

The test results are tabulated as follows:

<u>Paragraph</u>	<u>Title of Test – Test Method</u>	<u>Results</u>	<u>Allowed</u>
5.3.1	Operating Force per ASTM E2068-00		
	<u>Open</u>		
	Initiate Motion	62 N (14.0 lbf)	135 N (30 lbf)
	Maintain Motion	36 N (8.0 lbf)	90 N (20 lbf)
	<u>Close</u>		
	Initiate Motion	53 N (12.0 lbf)	135 N (30 lbf)
	Maintain Motion	31 N (7.0 lbf)	90 N (20 lbf)
5.3.1.1.3	Force to Latch	4 N (1.0 lbf)	100 N (22.5 lbf)
5.3.2.1	Air Infiltration per ASTM E283-04		
	75 Pa (1.57 psf)	0.33 L/s/m <sup>2</sup> 0.065 scfm/ft <sup>2</sup>	1.5 L/s/m <sup>2</sup> 0.30 scfm/ft <sup>2</sup>
	299 Pa (6.24 psf)	0.98 L/s/m <sup>2</sup> 0.196 scfm/ft <sup>2</sup>	2.5 L/s/m <sup>2</sup> 0.50 scfm/ft <sup>2</sup>
	Air Exfiltration per ASTM E283-04		
	75 Pa (1.57 psf)	0.33 L/s/m <sup>2</sup> 0.065 scfm/ft <sup>2</sup>	1.5 L/s/m <sup>2</sup> 0.30 scfm/ft <sup>2</sup>
	299 Pa (6.24 psf)	0.60 L/s/m <sup>2</sup> 0.119 scfm/ft <sup>2</sup>	2.5 L/s/m <sup>2</sup> 0.50 scfm/ft <sup>2</sup>
<b>Note #1:</b>	<i>The tested specimen meets (or exceeds) the performance levels specified in AAMA/WDMA/CSA 101/I.S.2-97/A440-17 for air infiltration/exfiltration.</i>		
5.3.3	Water Resistance per ASTM E 547-00	See Note 2	
<b>Note #2:</b>	<i>The client opted to start test at a pressure higher than the minimum required. Those results are listed under "Optional Performance" .</i>		
4.4.2.6	Optional Performance		
	Water Resistance per ASTM E 547-00 @ 467 Pa (9.75 psf) without sill riser	No Leakage	No Leakage

Test Results: Specimen 2: 4570 mm x 3048 mm (179.94" x 120.0") Aluminum Sliding Glass Door - XXX

The test results are tabulated as follows:

<u>Paragraph</u>	<u>Title of Test – Test Method</u>	<u>Results</u>	<u>Allowed</u>
5.3.2	Operating Force per ASTM E2068-00	<i>See Specimen 1, this report, for results.</i>	
5.3.1.1.3	Force to Latch	<i>See Specimen 1, this report, for results.</i>	
5.3.2.1	Air Infiltration per ASTM E283-04 75 Pa (1.57 psf)	<i>See Specimen 1, this report, for results.</i>	
	299 Pa (6.24 psf)	<i>See Specimen 1, this report, for results.</i>	
	Air Exfiltration per ASTM E283-04 75 Pa (1.57 psf)	<i>See Specimen 1, this report, for results.</i>	
	299 Pa (6.24 psf)	<i>See Specimen 1, this report, for results.</i>	
<b>Note #1:</b>	<i>The tested specimen meets (or exceeds) the performance levels specified in AAMA/WDMA/CSA 101/I.S.2-97/A440-17 for air infiltration/exfiltration.</i>		
5.3.3	Water Resistance per ASTM E 547-00	See Note 2	
5.3.4.2	Uniform Load Deflection per ASTM E 330-02	See Note 2	
5.3.4.3	Uniform Load Structural per ASTM E 330-02	See Note 2	
<b>Note #2:</b>	<i>The client opted to start test at a pressure higher than the minimum required. Those results are listed under "Optional Performance".</i>		
5.3.5	Forced Entry ASTM F842 Type A Grade 10		
	Test A1 through A7	No Entry	No Entry
	Lock Hardware Manipulation Test	No Entry	No Entry
	Sash/Panel Manipulation Test	No Entry	No Entry
5.3.6.3	Deglazing Test per ASTM E987		
	In operating direction 320 N (70 lbs)		
	Right Stile	0.43 mm (0.017")	11.43 mm (0.450")
	Left Stile	0.38 mm (0.015")	11.43 mm (0.450")
	In remaining direction 222 N (50 lbs)		
	Top Rail	0.20 mm (0.008")	11.43 mm (0.450")
	Bottom Rail	0.25 mm (0.010")	11.43 mm (0.450")



Test Results: Specimen 3: 4570 mm x 3048 mm (179.94" x 120.0") Aluminum Sliding Glass Door - XXX

The test results are tabulated as follows:

<u>Paragraph</u>	<u>Title of Test – Test Method</u>	<u>Results</u>	<u>Allowed</u>
5.3.3	Operating Force per ASTM E2068-00	<i>See Specimen 1, this report, for results.</i>	
5.3.1.1.3	Force to Latch	<i>See Specimen 1, this report, for results.</i>	
5.3.2.1	Air Infiltration per ASTM E283-04 75 Pa (1.57 psf)	<i>See Specimen 1, this report, for results.</i>	
	299 Pa (6.24 psf)	<i>See Specimen 1, this report, for results.</i>	
	Air Exfiltration per ASTM E283-04 75 Pa (1.57 psf)	<i>See Specimen 1, this report, for results.</i>	
	299 Pa (6.24 psf)	<i>See Specimen 1, this report, for results.</i>	

**Note #1:** *The tested specimen meets (or exceeds) the performance levels specified in AAMA/WDMA/CSA 101/I.S.2-97/A440-17 for air infiltration/exfiltration.*

5.3.3	Water Resistance per ASTM E 547-00	See Note 2
5.3.4.2	Uniform Load Deflection per ASTM E 330-02	See Note 2
5.3.4.3	Uniform Load Structural per ASTM E 330-02	See Note 2

**Note #2:** *The client opted to start test at a pressure higher than the minimum required. Those results are listed under "Optional Performance".*

5.3.5	Forced Entry ASTM F842 Type A Grade 10		
	Test A1 through A7	No Entry	No Entry
	Lock Hardware Manipulation Test	No Entry	No Entry
	Sash/Panel Manipulation Test	No Entry	No Entry

5.3.6.3 Deglazing Test per ASTM E987 *See Specimen 2, this report, for results.*

Results: (Continued ) - Specimen 3: 4570 mm x 3048 mm (179.94" x 120.0") Aluminum Sliding Glass Door - XXX

4.4.2.6 Optional Performance

Water Resistance per ASTM E 547-00

See Specimen 1 and 2 of this report for these results.

Uniform Load Structural per ASTM E 330-14

Range	Time (Sec)	Load Pa (psf)	Location	Deflection mm (in.)	Allowable mm (in.)
Half Test Positive	10	1796 (37.50)			
Test Positive	10	3591 (75.00)	1	30.56 (1.203)	See Note #3
			2	8.00 (0.315)	See Note #3
Half Test Negative	10	1796 (37.50)			
Test Negative	10	3591 (75.00)	1	40.26 (1.585)	See Note #3
			2	16.54 (0.651)	See Note #3

Note #3: *The deflections reported are not limited by AAMA/WDMA/CSA101/I.S.2/A440-17 for this product designation. The deflection data is recorded in this report for special code compliance and information only. See Note #4 for deflection locations.*

Range	Time (seconds)	Load Pa (psf)	Location	Deflection mm (in.)	Set mm (in.)	Allowable mm (in.)
Half Proof Positive	10	2693 (56.25)				
Proof Positive	10	5387 (112.50)	1	48.57 (1.912)	4.85 (0.191)	11.79 (0.464)
			2	13.74 (0.541)	3.53 (0.139)	6.12 (0.241)
Half Proof Negative	10	2693 (56.25)				
Proof Negative	10	5387 (112.50)	1	59.06 (2.325)	4.04 (0.159)	11.79 (0.464)
			2	27.15 (1.069)	6.45 (0.254)	6.12 (0.241)

Note #4: *Deflection/Set for Location 1 measured at center of interlock.  
Deflection/Set for Location 2 measured at center of top rail.*

**General Note:**

Tape and film were used to seal against air leakage during structural testing. In our opinion, the tape and film did not influence the results of the tests.

**Drawing Reference:**

The test specimen drawings have been reviewed by TEL and are representative of the test specimens reported herein.

**Conditions, Terms, and General Notes Regarding These Tests**

The product tested Has Been compared to the detailed drawing, bill of materials and fabrication information supplied by the client so named herein. Our analysis, which includes dimensional and component description comparisons, indicate the tested product and engineering information supplied by the client "Are Equivalent".

The report and representative samples will be retained for four years from the date of initial test.

These test results were obtained by employing all requirements of the designated test methods with no Deviations unless explicitly noted in test report. The test results and specimen supplied for testing are in compliance with the reference.

The test results are specific to the product tested by this laboratory and of the sample supplied by the client named herein, and they relate to no other product either manufactured by the client, a fabricator of the client or of installed field performance.

This test report does not constitute certification of this product, but only that the above test results were obtained using the designated test methods and they indicate compliance with the performance requirements (paragraphs as listed) of the above referenced specifications.

Testing Evaluation Laboratories, Inc. makes no opinions or endorsements regarding this product and its performance. This report may not be reproduced or quoted in partial form without the expressed written approval of Testing Evaluation Laboratories, Inc.

Testing Evaluation Laboratories, Inc.'s letter, reports, its name or insignia or mark are for the exclusive use of the client so named herein and any other use is strictly prohibited. The report, letters and the name of Testing Evaluation Laboratories, Inc., its seal or mark shall not be used in any circumstance to the general public or in any advertising.

Limitation of liability: Due diligence was used in performing the tests and reporting the results. By acceptance of this report, this client agrees to hold harmless and indemnify Testing Evaluation Laboratories, Inc., its employees, sub-contractors and officers and owners against all claims and demands of any kind whatsoever, which arise out of or in any manner connected with the performance of work referred to herein.

Testing Evaluation Laboratories, Inc.

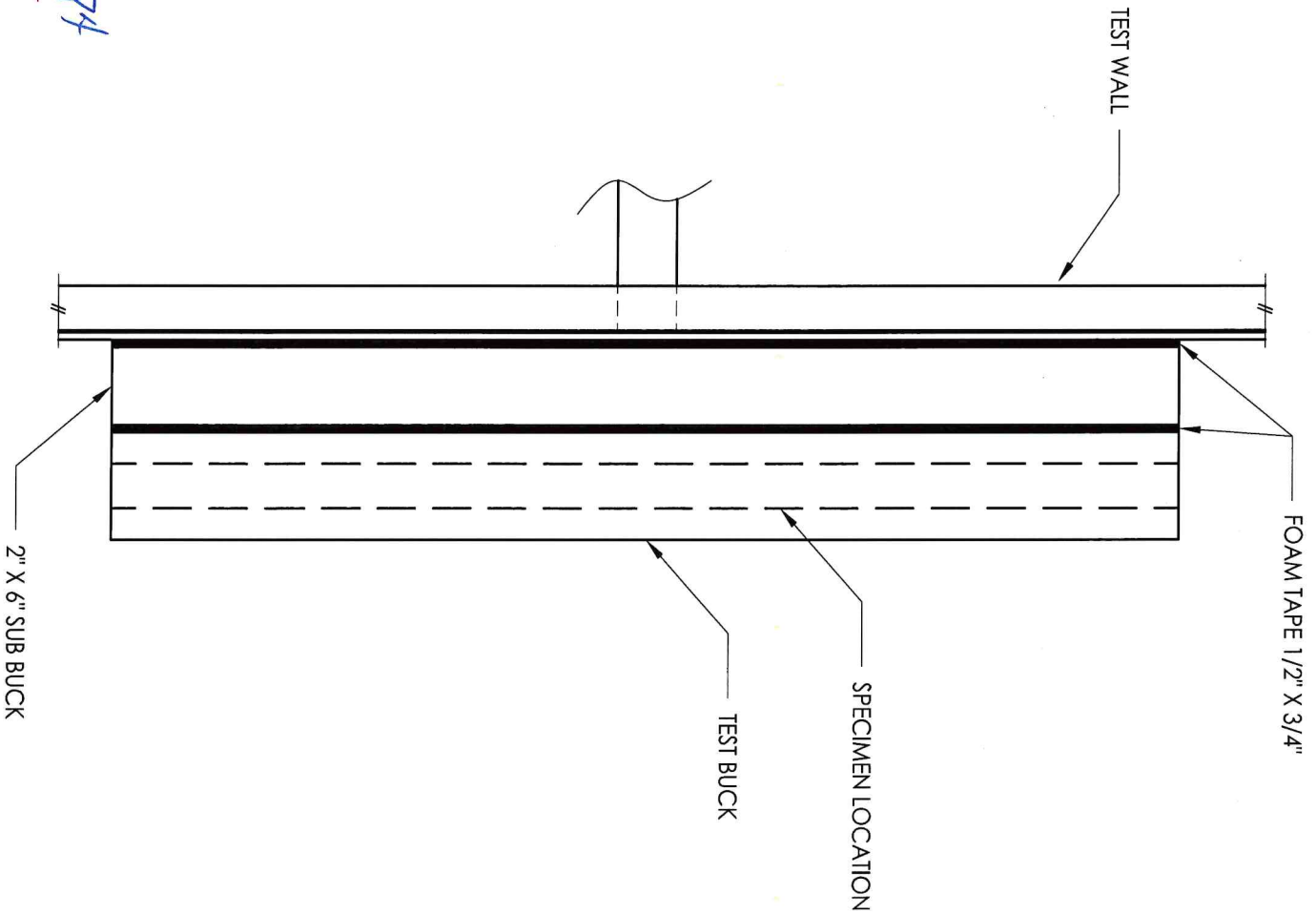


Vivian K. Wright,  
President



### Revision Log

Rev No.	Date	Page(s)	Revision(s)
0	10/21/2023	NA	Original Report Issue



Testing Evaluation Laboratories Inc.  
 Specimen Complies with Drawing  
 Deviations Noted - TEL# 0199 3774  
 Date 10/21/23 Verified by *TLW*

PRODUCT: ASTM E283 SECTION 13.1.4	
PART OR ASSEMBLY: AIR SEAL DETAIL	
T.E.L. 813.754.9887	NO.    DATE    BY
REVISIONS	
DATE: 5/03/17 SCALE: N.T.S. DWG. BY: JK CHK. BY: LFS DRAWING NO.: TEL-102A	SHEET 1 OF 1

**TABLE OF CONTENTS**

SHEET #	DESCRIPTION
1	Table of Contents
2	Test Elevation
3	Horizontal Cross Section
4	Horizontal Cross Section
5	Vertical Cross Section
6	Vertical Cross Section
7	Frame Anchoring
8	Components
9	Bill of Materials & Glazing Detail

Testing Evaluation Laboratories Inc.  
 Specimen Complies with Drawing  
 Deviations Noted - TEL# 01993774  
 Date 4/06/2023 Verified by VKW

PRODUCT:	FLEETWOOD EDGE SLIDING GLASS DOOR SEPC #1
PART OR ASSEMBLY:	TABLE OF CONTENTS

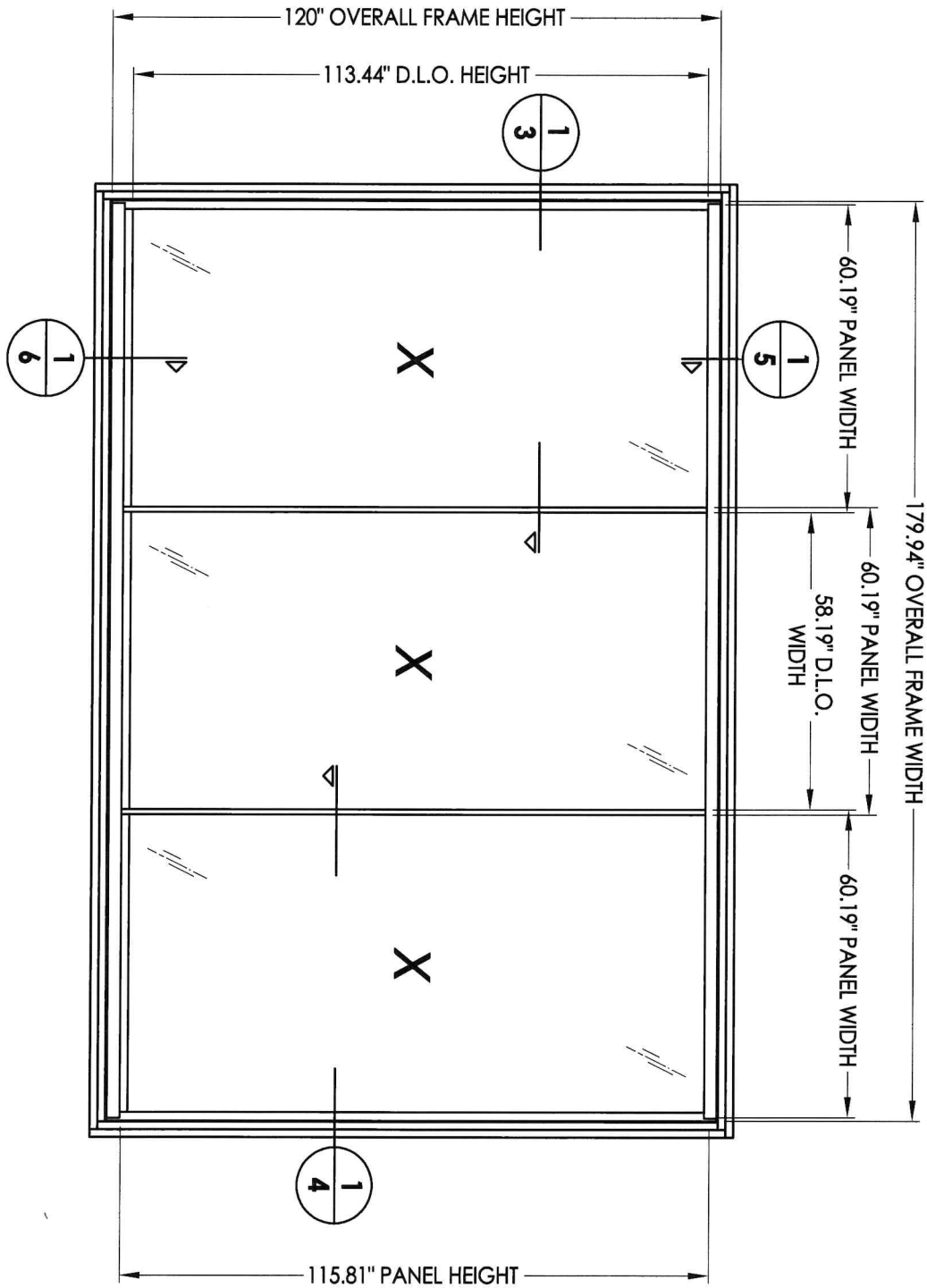
NO.	DATE	BY

REVISIONS



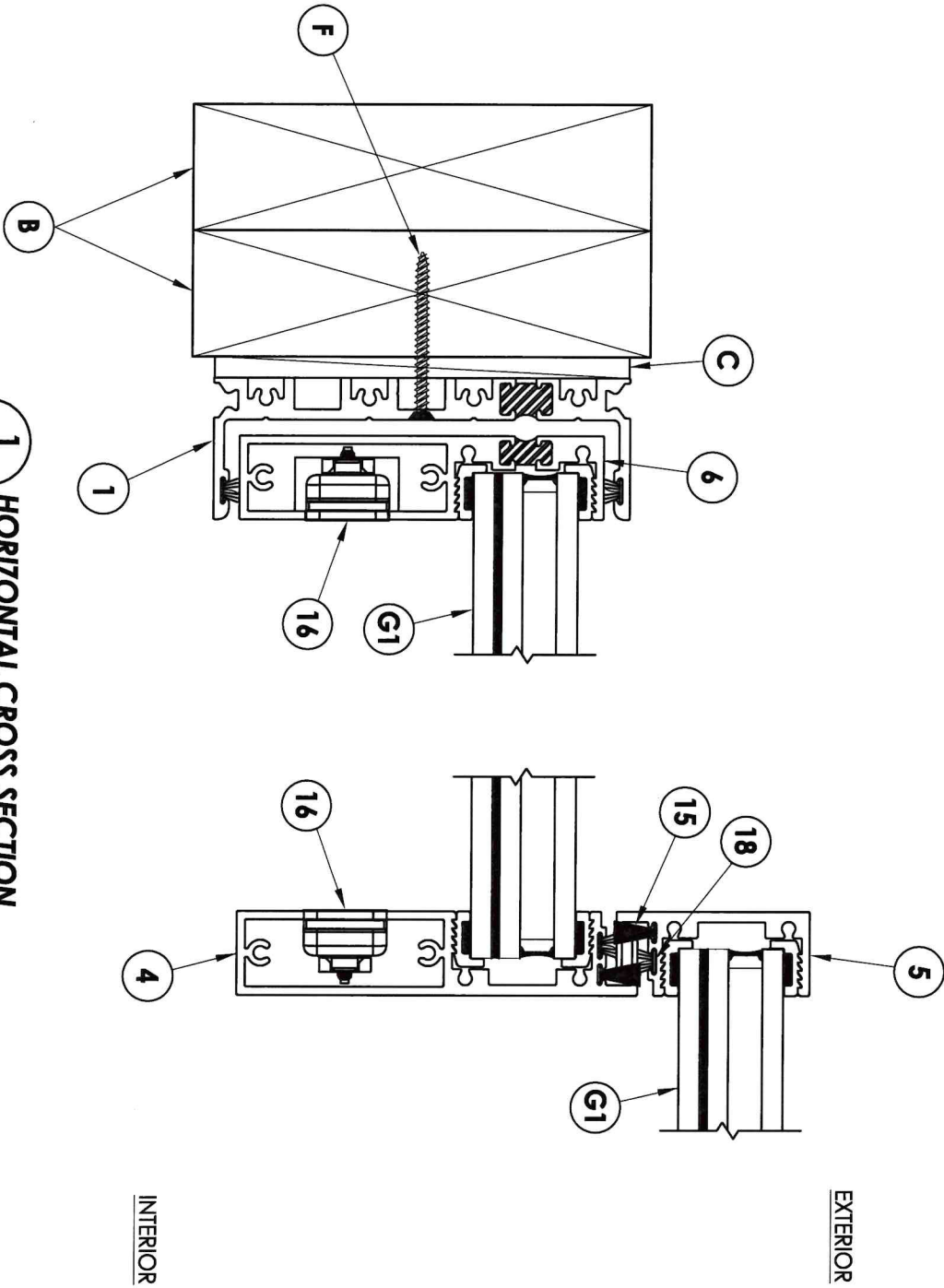
**R.W. BUILDING CONSULTANTS, INC.**  
813.659.9197

DATE:	4/04/23
SCALE:	N.T.S.
DWG. BY:	LFS
CHK. BY:	RW
DRAWING NO.:	L-9826
SHEET	1 OF 9



Testing Evaluation Laboratories Inc.  
 Specimen Complies with Drawing  
 Deviations Noted - TEL# 01993774  
 Date 4/06/2023 Verified by VKW

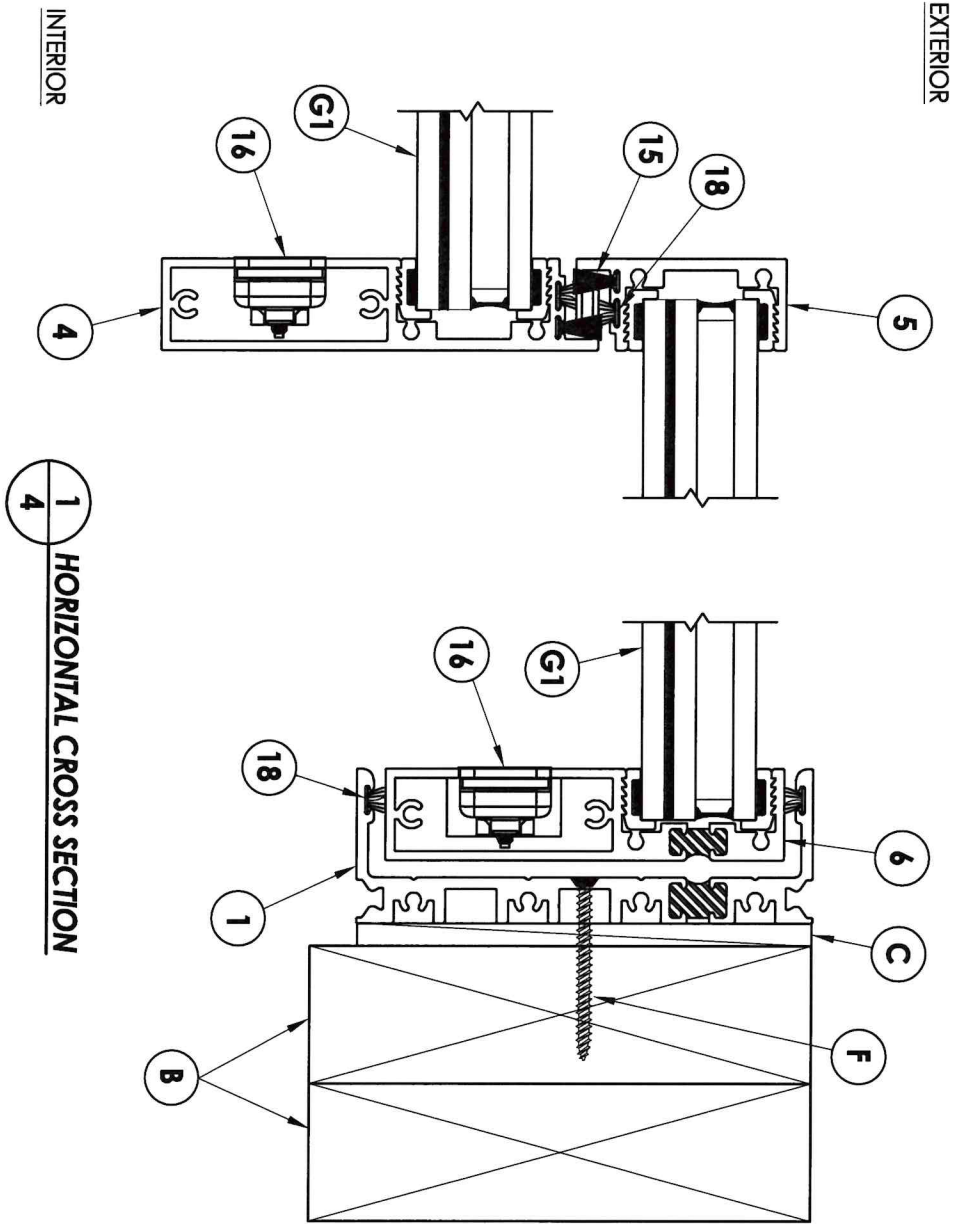
DATE: 4/04/23 SCALE: N.T.S. DWG. BY: LFS CHK. BY: RW DRAWING NO.: L-9826 SHEET 2 OF 9		R <sup>9</sup> W BUILDING CONSULTANTS, INC. 813.659.9197	PRODUCT: FLEETWOOD EDGE SLIDING GLASS DOOR	
NO.      DATE      BY			PART OR ASSEMBLY: TEST ELEVATION	
REVISIONS				



**1** HORIZONTAL CROSS SECTION  
**3**

Testing Evaluation Laboratories Inc.  
Specimen Complies with Drawing  
Deviations Noted - TEI# 01993774  
Date 4/06/2023 Verified by VKW

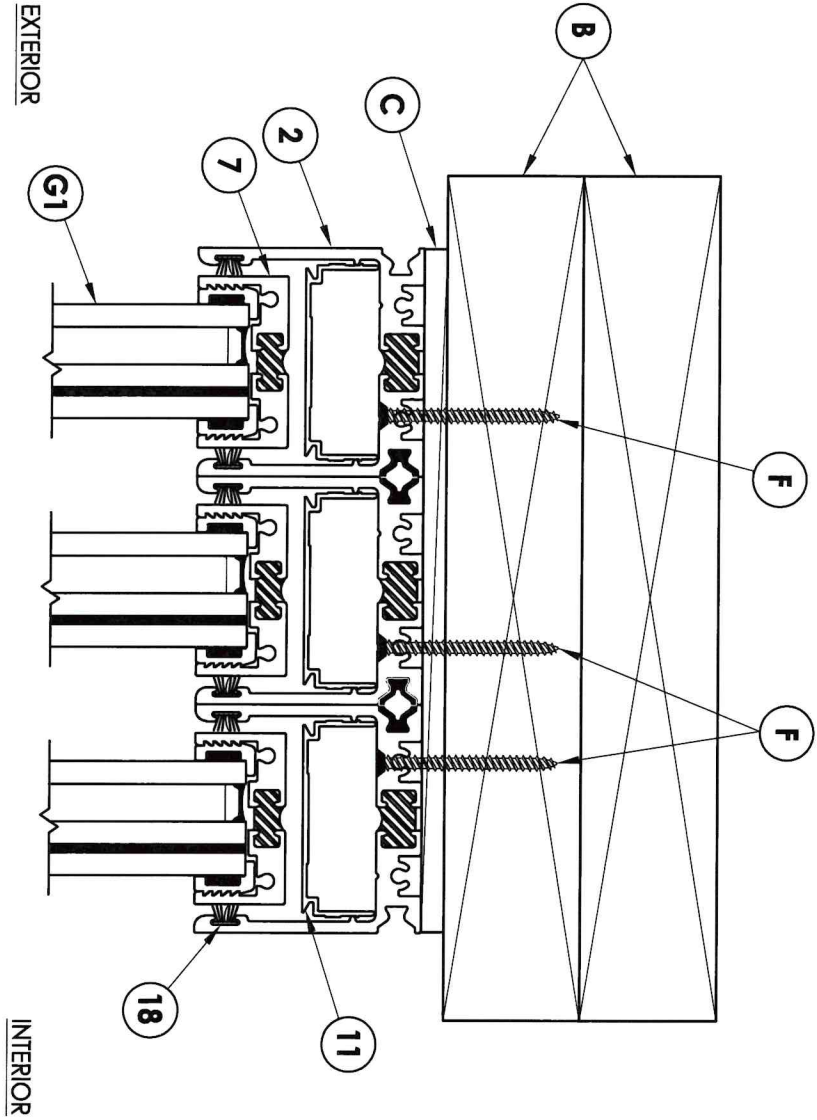
<p>DATE: 4/04/23 SCALE: N.T.S. DWG. BY: LFS CHK. BY: RW DRAWING NO.: L-9826 SHEET 3 of 9</p>		<p>PRODUCT: FLEETWOOD EDGE SLIDING GLASS DOOR</p>	
<p>NO. DATE REVISIONS BY</p>		<p>PART OR ASSEMBLY: HORIZONTAL CROSS SECTION</p>	



Testing Evaluation Laboratories Inc.  
 Specimen Complies with Drawing  
 Deviations Noted - TEI# 01993774  
 Date 4/06/2023 Verified by VKW

**1** **HORIZONTAL CROSS SECTION** **4**

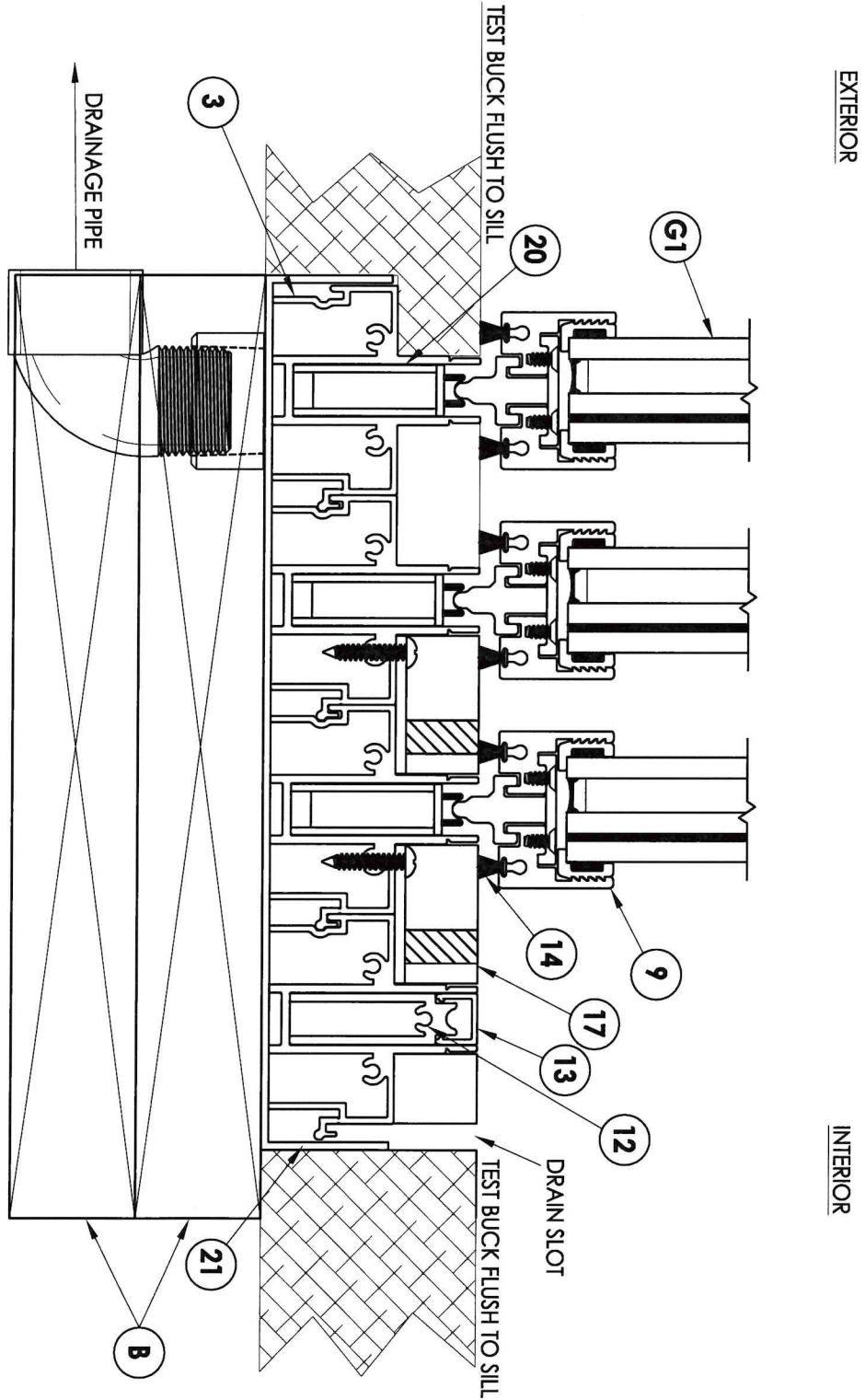
DATE: 4/04/23 SCALE: N.T.S. DWG. BY: LFS CHK. BY: RW DRAWING NO.: L-9826 SHEET 4 OF 9		PRODUCT: FLEETWOOD EDGE SLIDING GLASS DOOR	
NO. DATE BY		PART OR ASSEMBLY: HORIZONTAL CROSS SECTION	
REVISIONS			



1  
5 VERTICAL CROSS SECTION

Testing Evaluation Laboratories Inc.  
 Specimen Complies with Drawing  
 Deviations Noted - TEL# 01993774  
 Date 4/06/2023 Verified by VKW

DATE: 4/04/23 SCALE: N.T.S. DWG. BY: LFS CHK. BY: RW DRAWING NO.: L-9826 SHEET 5 OF 9		PRODUCT: FLEETWOOD EDGE SLIDING GLASS DOOR PART OR ASSEMBLY: VERTICAL CROSS SECTION	
R <sup>W</sup> BUILDING CONSULTANTS, INC. 813.659.9197		REVISIONS NO. DATE BY	



EXTERIOR

INTERIOR

Testing Evaluation Laboratories Inc.  
 Specimen Complies with Drawing  
 Deviations Noted - TEL# 01993774  
 Date 4/06/2023 Verified by VKW

1  
6  
VERTICAL CROSS SECTION

PRODUCT: FLEETWOOD  
 EDGE SLIDING GLASS DOOR

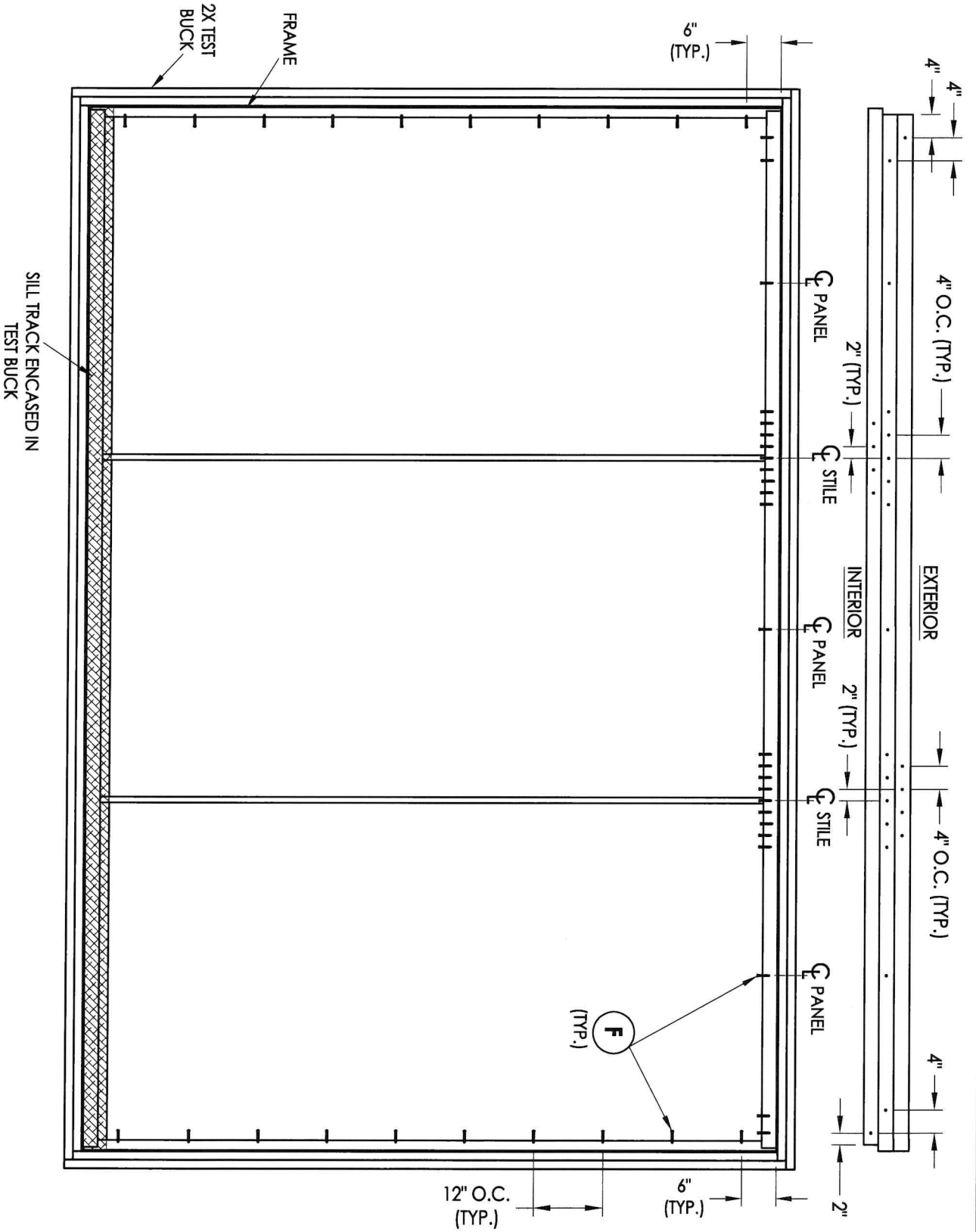
PART OR ASSEMBLY:  
 VERTICAL  
 CROSS SECTION

NO.	DATE	REVISIONS	BY

**RW** BUILDING CONSULTANTS, INC.  
 813.659.9197

DATE: 4/04/23  
 SCALE: N.T.S.  
 DWG. BY: LFS  
 CHK. BY: RW  
 DRAWING NO.: L-9826  
 SHEET 6 of 9



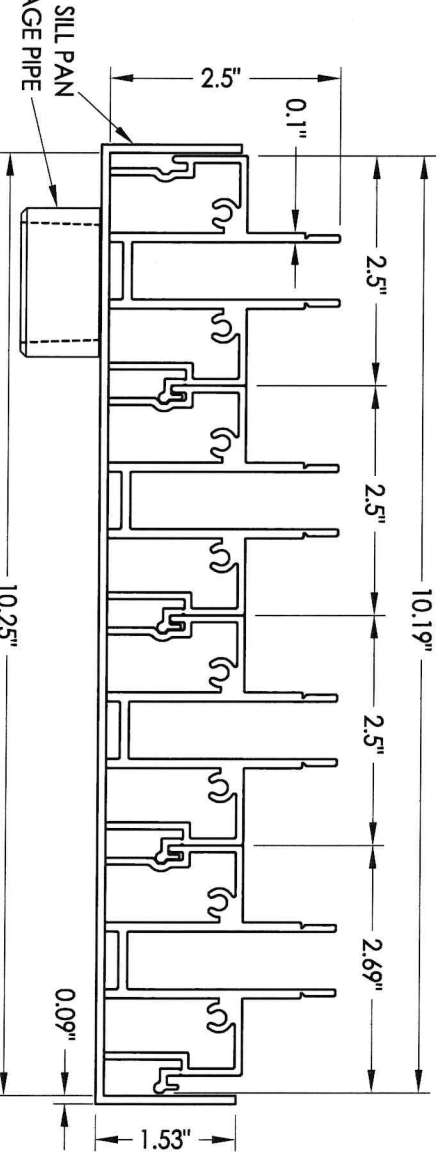
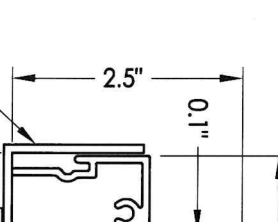
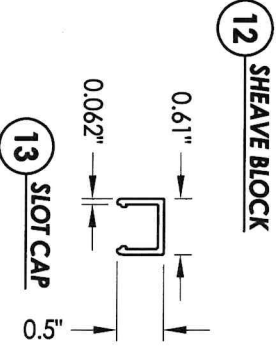
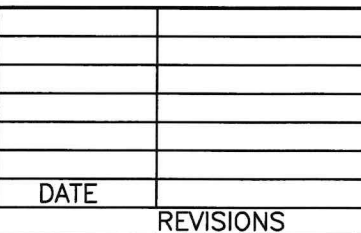
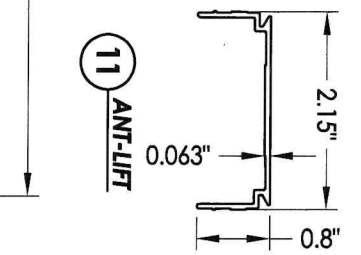
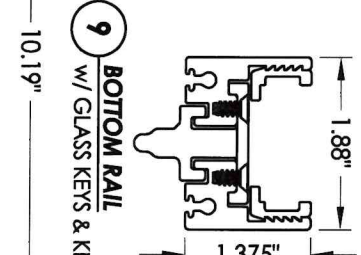
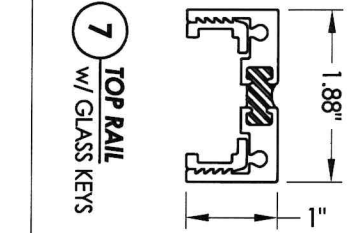
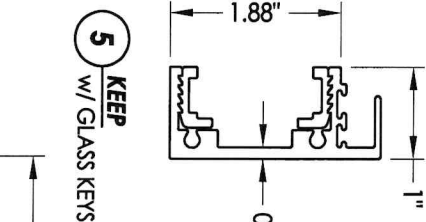
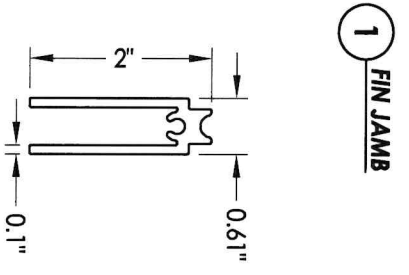
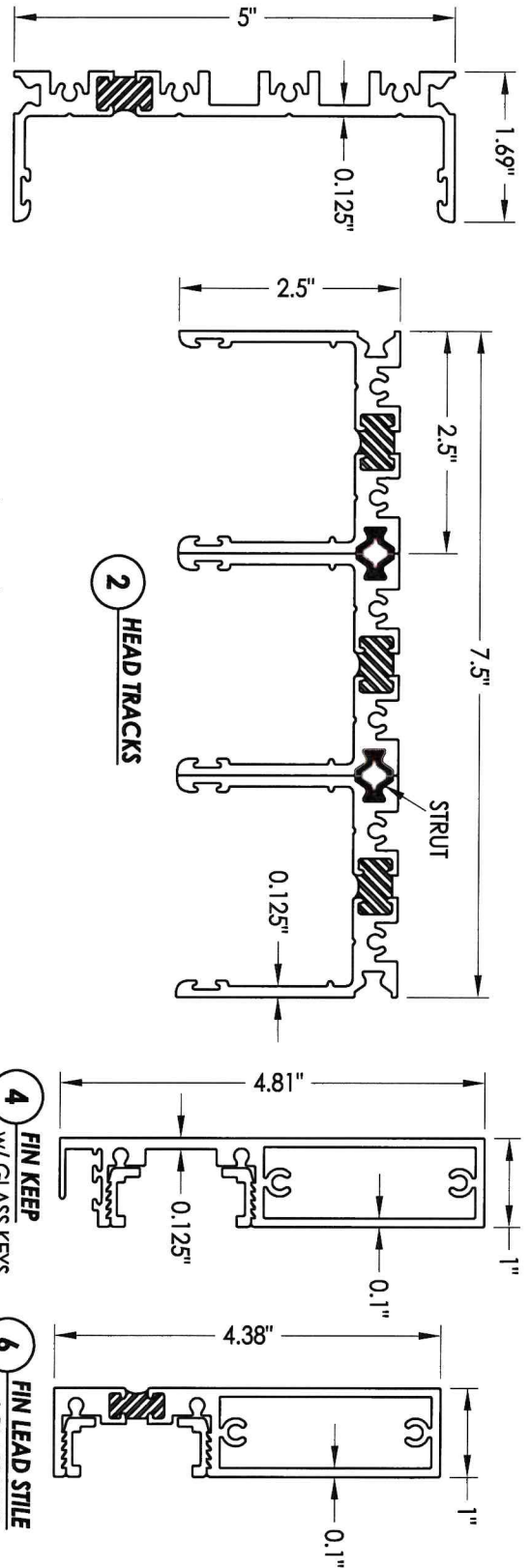


Testing Evaluation Laboratories Inc.  
 Specimen Complies with Drawing  
 Deviations Noted - TEL# 01993774  
 Date 4/06/2023 Verified by VKW

**FRAME ANCHORING**  
 2X TEST BUCK

DATE: 4/04/23		PRODUCT: FLEETWOOD EDGE SLIDING GLASS DOOR	
SCALE: N.T.S.		PART OR ASSEMBLY: FRAME ANCHORING	
DWG. BY: LFS		NO.	
CHK. BY: RW		DATE	
DRAWING NO.: L-9826		BY	
SHEET 7 OF 9		REVISIONS	

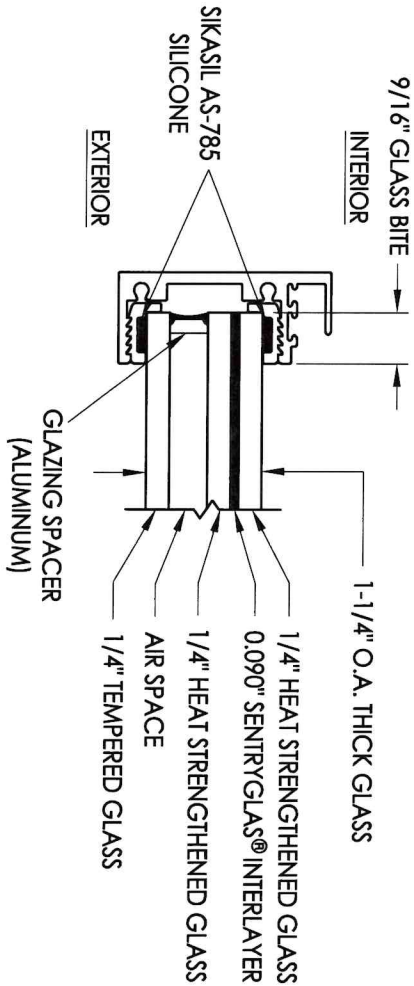
**R<sup>W</sup>** BUILDING CONSULTANTS, INC.  
 813.659.9197



Testing Evaluation Laboratories Inc.  
 Specimen Complies with Drawing  
 Deviations Noted - TEL# 01993774  
 Date 4/06/2023 Verified by VKW

DATE: 4/04/23		R.W. BUILDING CONSULTANTS, INC. 813.659.9197	
SCALE: N.T.S.		DRAWING NO.: L-9826	
DWG. BY: LFS		CHK. BY: RW	
SHEET 8 OF 9		PRODUCT: FLEETWOOD EDGE SLIDING GLASS DOOR	
NO.		PART OR ASSEMBLY: COMPONENTS	
DATE		REVISIONS	
		BY	

BILL OF MATERIALS		MATERIAL
ITEM #	DESCRIPTION	
B	2X TEST BUCK (G >= 0.42)	WOOD
C	1/4" MAX. SHIM SPACE	-
F	#10 X 2" FH WOOD SCREW	STEEL
1	FIN JAMB	6063-T6 ALUM
2	HEAD TRACKS	6063-T6 ALUM
3	SILL TRACKS	6063-T6 ALUM
4	FIN KEEP	6063-T6 ALUM
5	KEEP	6063-T6 ALUM
6	FIN LEAD STILE	6063-T6 ALUM
7	TOP RAIL	6063-T6 ALUM
9	BOTTOM RAIL	6063-T6 ALUM
11	ANTI-LIFT	6063-T6 ALUM
12	SHEAVE BLOCK	6063-T6 ALUM
13	SLOT CAP	6063-T6 ALUM
14	MOHAIR WEATHERSTRIP	-
15	MOHAIR WEATHERSTRIP	-
16	BLADE LOCKING HARDWARE	-
17	BLADE CASE	-
18	MOHAIR WEATHERSTRIP	-
20	A4-E SHEAVE	-
21	SILL PAN	5052-ALUM



**G1** GLAZING DETAIL

Testing Evaluation Laboratories Inc.  
 Specimen Complies with Drawing  
 Deviations Noted - TEI# 01993774  
 Date 4/06/2023 Verified by VKW

PRODUCT: FLEETWOOD  
 EDGE SLIDING GLASS DOOR

PART OR ASSEMBLY:  
 BILL OF MATERIALS, COMPONENTS  
 & GLAZING DETAILS

NO.	DATE	BY

**RW** BUILDING CONSULTANTS, INC.  
 813.659.9197

DATE: 4/04/23  
 SCALE: N.T.S.  
 DWG. BY: LFS  
 CHK. BY: RW  
 DRAWING NO.: L-9826  
 SHEET 9 OF 9

**TABLE OF CONTENTS**

SHEET #	DESCRIPTION
1	Table of Contents
2	Test Elevation
3	Horizontal Cross Section
4	Horizontal Cross Section
5	Vertical Cross Section
6	Vertical Cross Section
7	Frame Anchoring
8	Components
9	Bill of Materials & Glazing Detail

Testing Evaluation Laboratories Inc.  
 Specimen Complies with Drawing  
 Deviations Noted - TEL# 01993774  
 Date 4/06/2023 Verified by VKW

PRODUCT: FLEETWOOD  
 EDGE SLIDING GLASS DOOR  
 SPEC #3

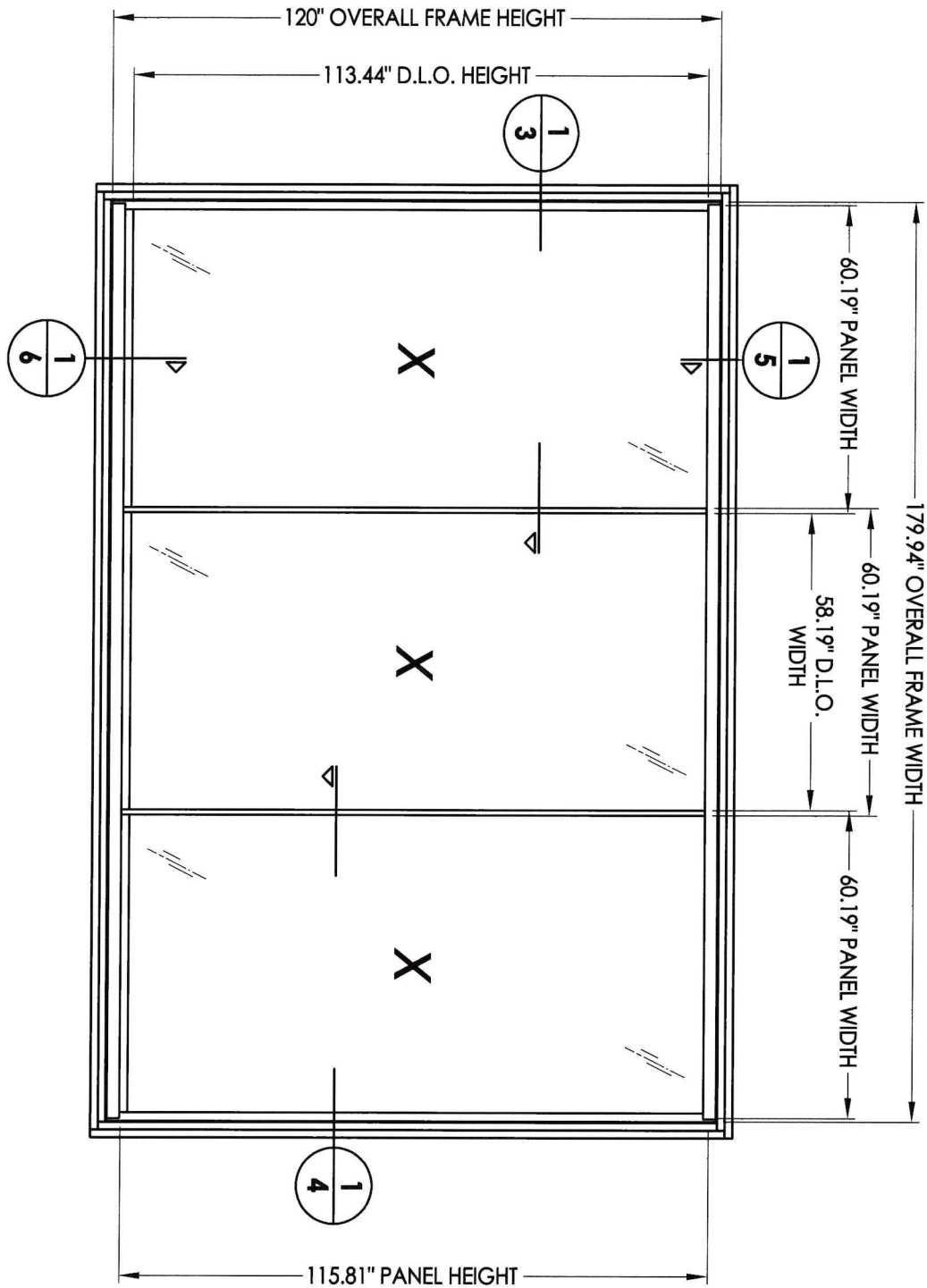
PART OR ASSEMBLY:  
 TABLE OF CONTENTS

NO.	DATE	BY

REVISIONS

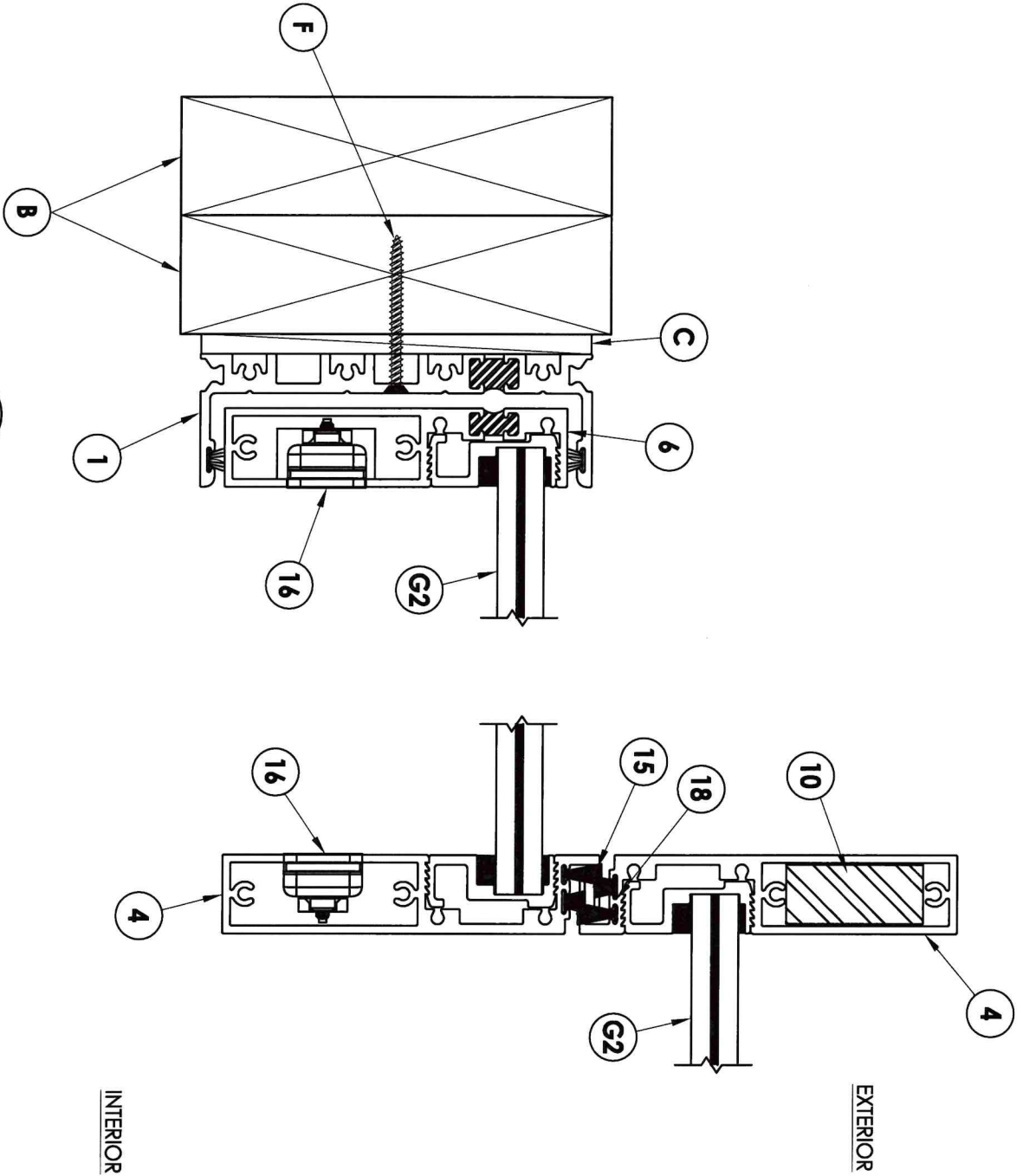


DATE: 4/04/23  
 SCALE: N.T.S.  
 DWG. BY: LFS  
 CHK. BY: RW  
 DRAWING NO.: L-9826b  
 SHEET 1 of 9



Testing Evaluation Laboratories Inc.  
 Specimen Complies with Drawing  
 Deviations Noted - TEL# 01993774  
 Date 4/06/2023 Verified by VKW

DATE: 4/04/23 SCALE: N.T.S. DWG. BY: LFS CHK. BY: RW DRAWING NO.: L-9826b SHEET 2 OF 9		R <sup>9</sup> W BUILDING CONSULTANTS, INC. 813.659.9197	PRODUCT: FLEETWOOD EDGE SLIDING GLASS DOOR	
NO.      DATE      BY			PART OR ASSEMBLY: TEST ELEVATION	
REVISIONS				



1 HORIZONTAL CROSS SECTION  
3

Testing Evaluation Laboratories Inc.  
Specimen Complies with Drawing  
Deviations Noted - TBL# 01993775  
Date 4/06/2023 Verified by VKW

PRODUCT:  
FLEETWOOD  
EDGE SLIDING GLASS DOOR

PART OR ASSEMBLY:  
HORIZONTAL CROSS SECTION

NO.	DATE	REVISIONS	BY

**RW** BUILDING  
CONSULTANTS, INC.  
813.659.9197

DATE: 4/04/23

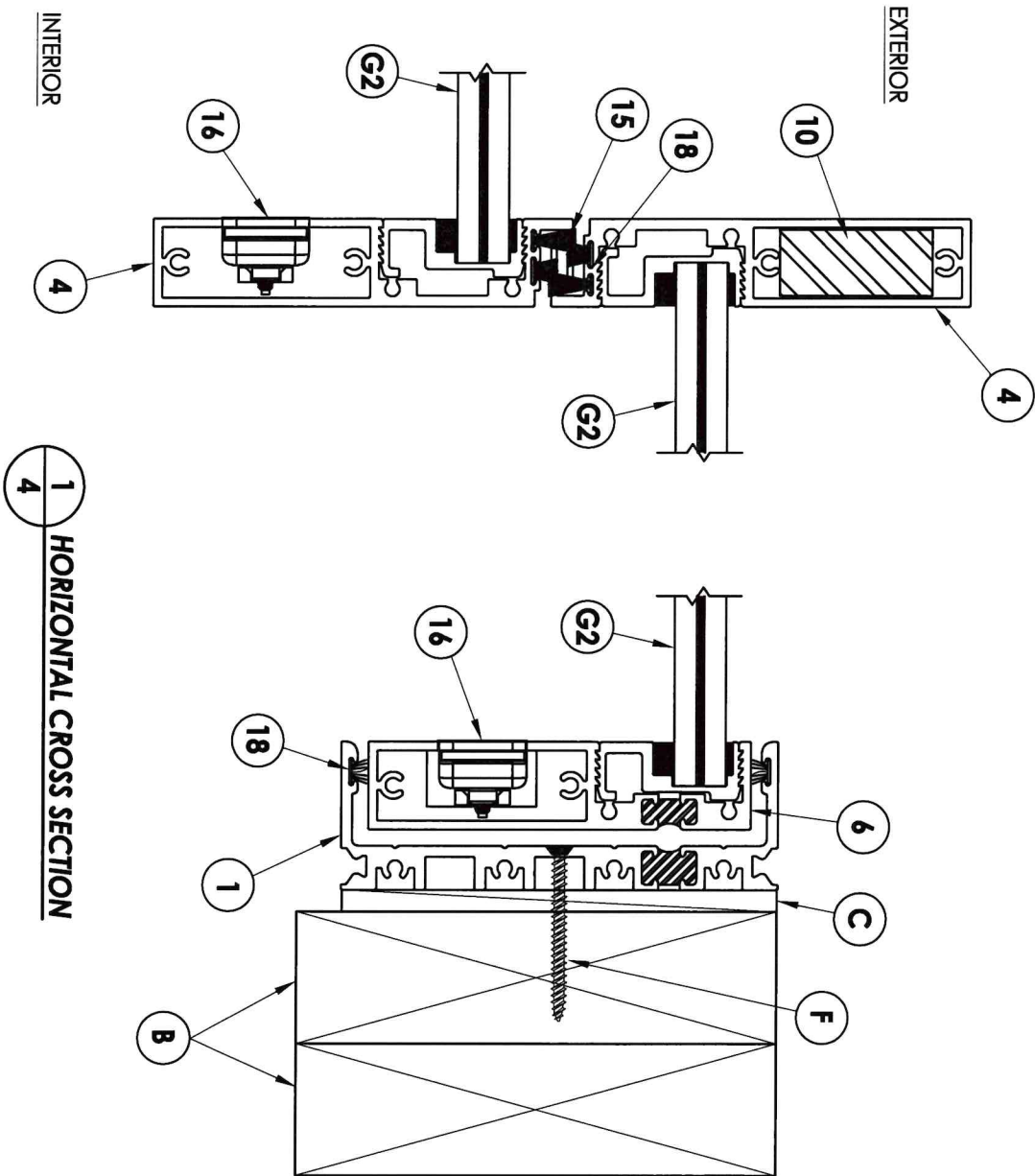
SCALE: N.T.S.

DWG. BY: LFS


CHK. BY: RW

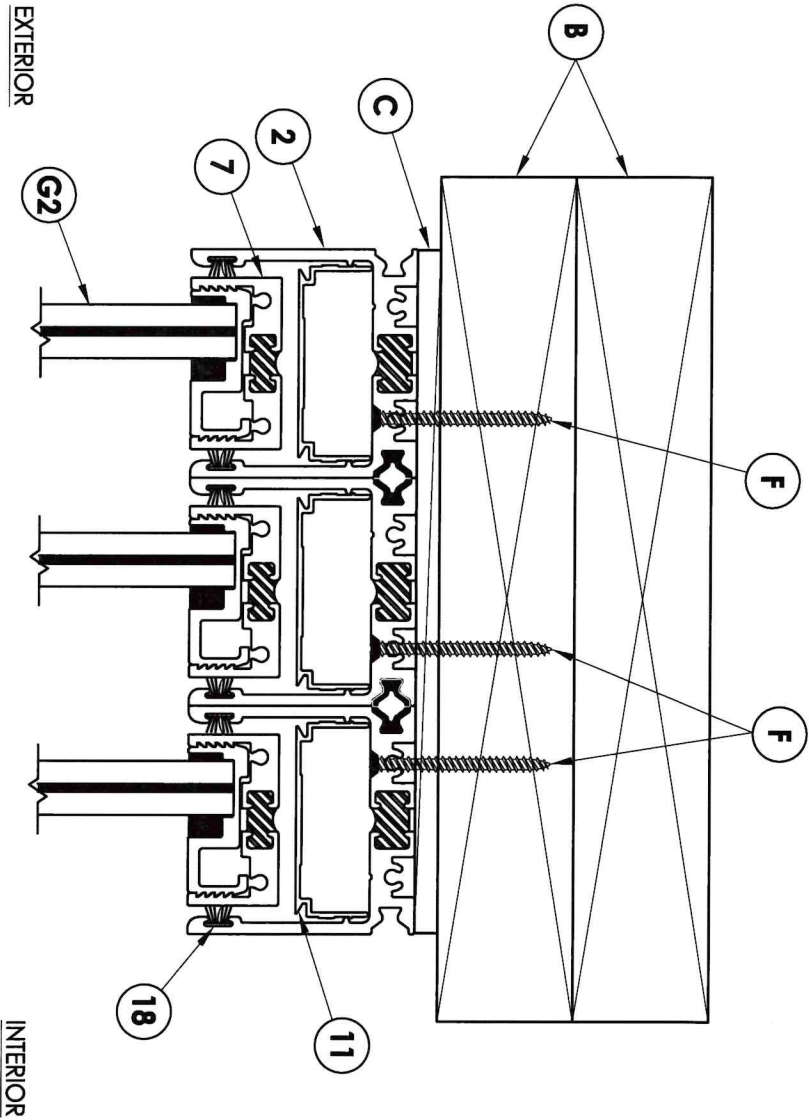
DRAWING NO.: L-9826b

SHEET 3 OF 9



Testing Evaluation Laboratories Inc.  
 Specimen Complies with Drawing  
 Deviations Noted - TEL# 01993775  
 Date 4/06/2023 Verified by VKW

		PRODUCT: FLEETWOOD EDGE SLIDING GLASS DOOR	
DATE: 4/04/23 SCALE: N.T.S. DWG. BY: LFS CHK. BY: RW DRAWING NO.: L-9826b SHEET 4 OF 9		PART OR ASSEMBLY: HORIZONTAL CROSS SECTION	
NO.	DATE	BY	REVISIONS



1  
5  
VERTICAL CROSS SECTION

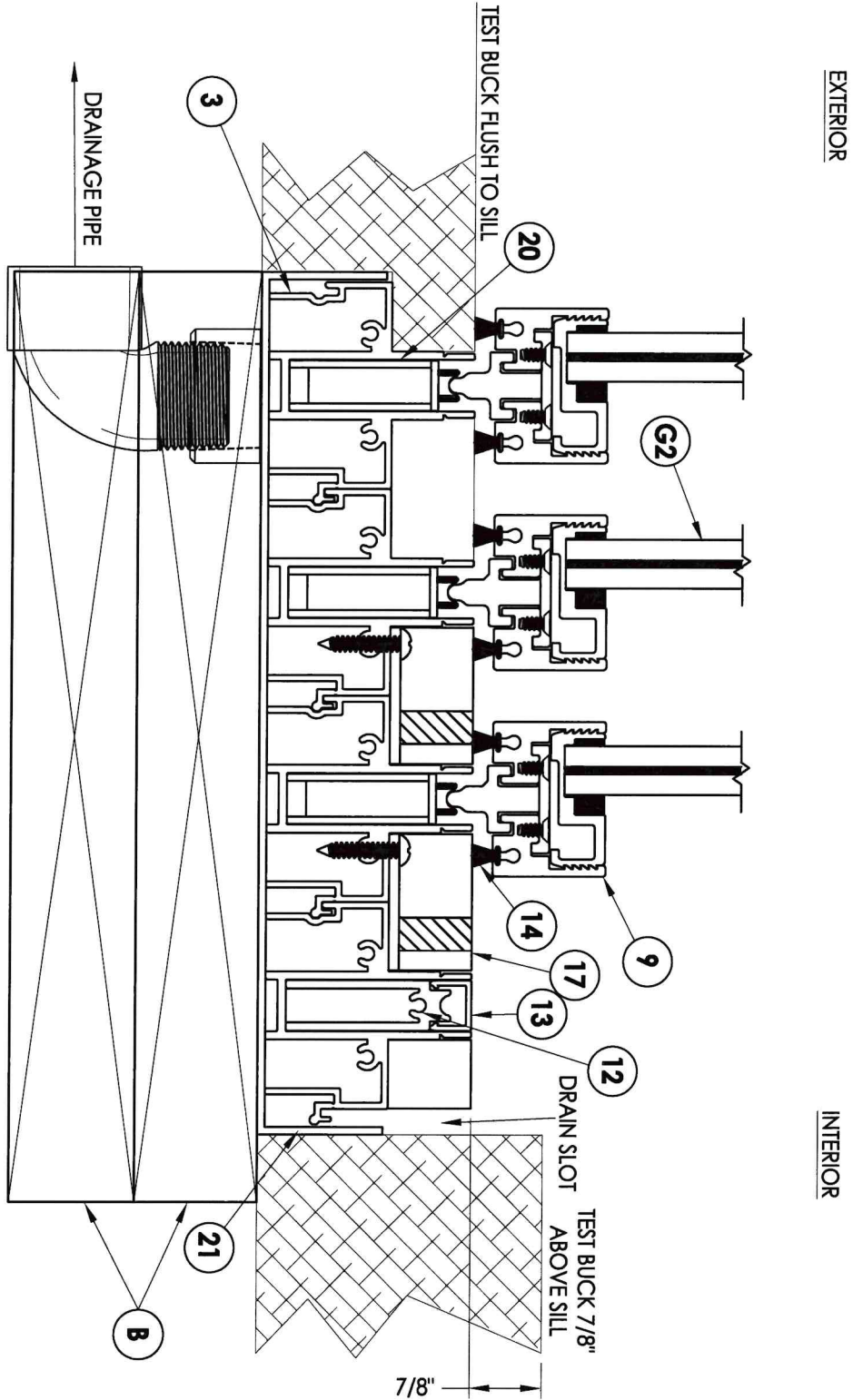
Testing Evaluation Laboratories Inc.  
 Specimen Complies with Drawing  
 Deviations Noted - TEL# 01993774  
 Date 4/06/2023 Verified by VKW

PRODUCT: FLEETWOOD EDGE SLIDING GLASS DOOR		
PART OR ASSEMBLY: VERTICAL CROSS SECTION		
NO.	DATE	BY
REVISIONS		

  
 BUILDING CONSULTANTS, INC.  
 813.659.9197

DATE: 4/04/23  
 SCALE: N.T.S.  
 DWG. BY: LFS  
 CHK. BY: RW  
 DRAWING NO.: L-9826b  
 SHEET 5 OF 9

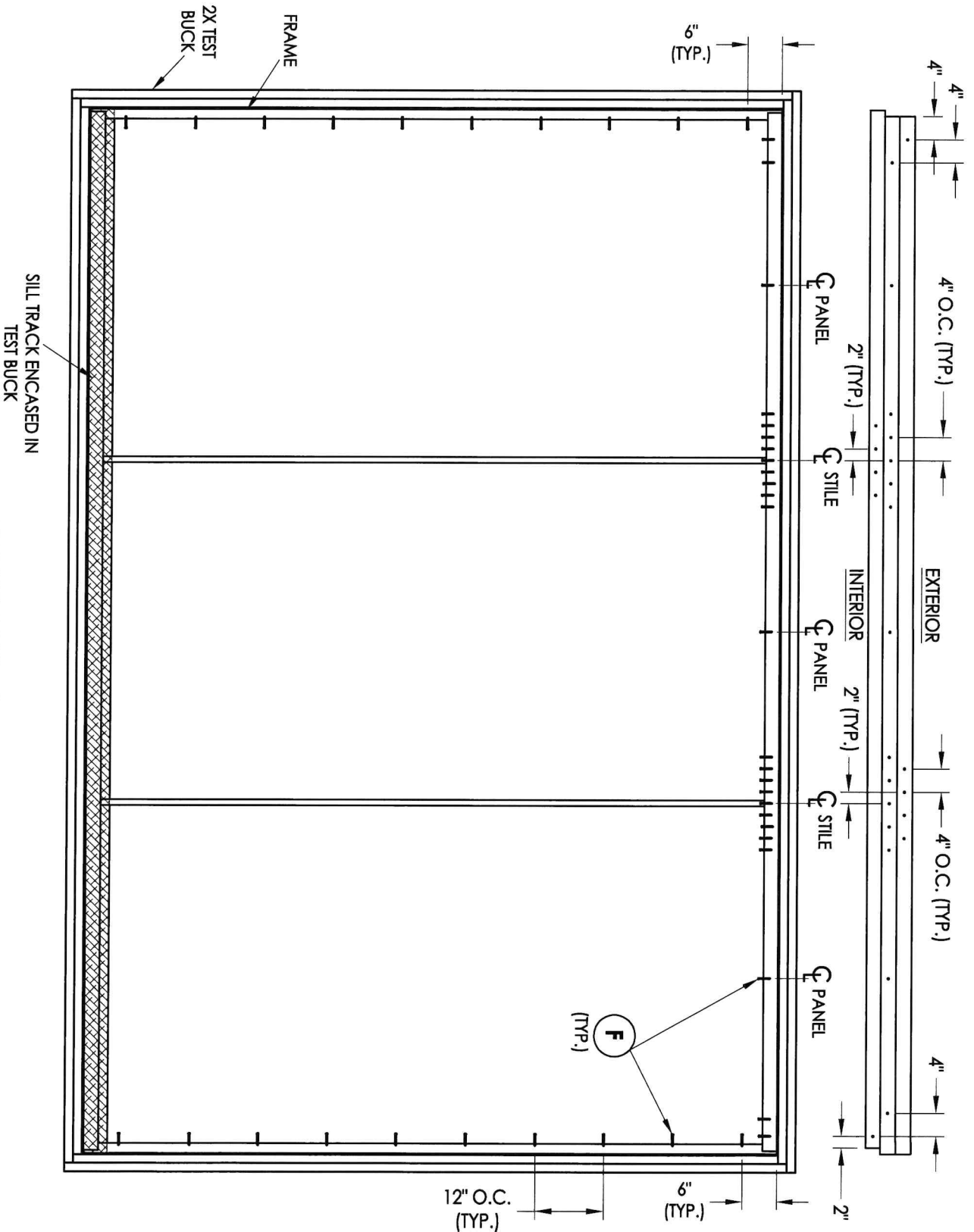




Testing Evaluation Laboratories Inc.  
 Specimen Complies with Drawing  
 Deviations Noted - TEL# 01993774  
 Date 4/06/2023 Verified by VKW

**1** VERTICAL CROSS SECTION  
**6**

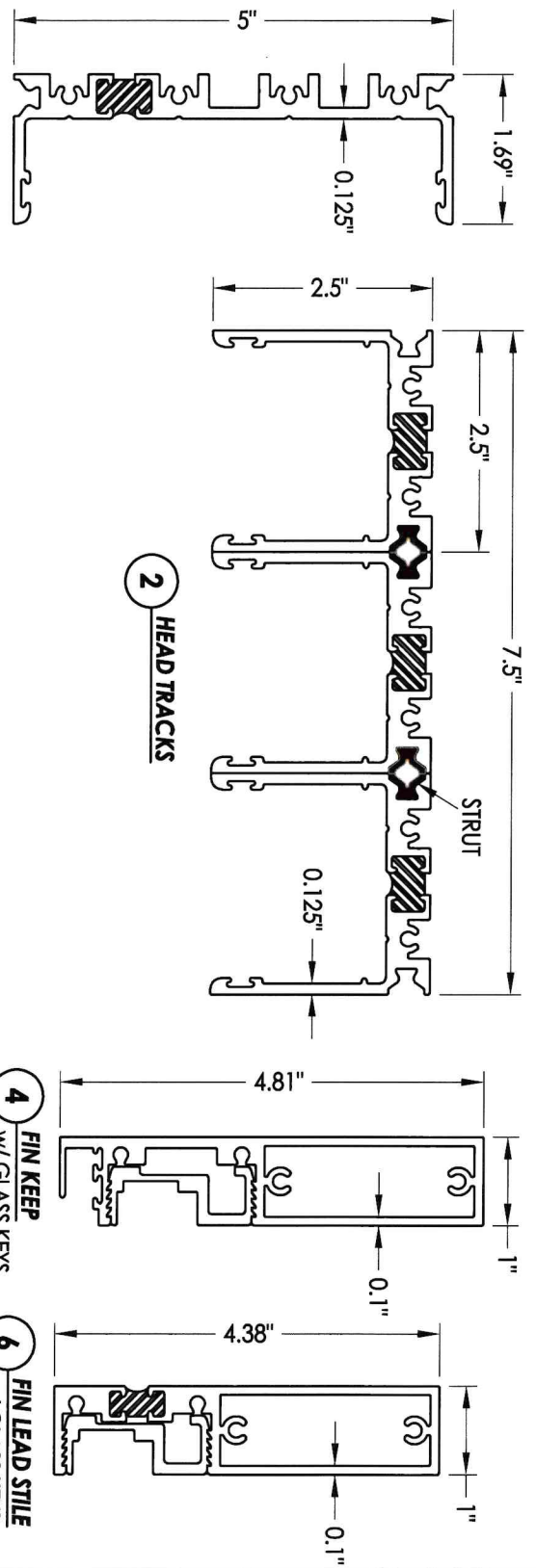
PRODUCT: FLEETWOOD EDGE SLIDING GLASS DOOR			
PART OR ASSEMBLY: VERTICAL CROSS SECTION			
NO.	DATE	REVISIONS	BY
R.W. BUILDING CONSULTANTS, INC. 813.659.9197			
DATE:	4/04/23		
SCALE:	N.T.S.		
DWG. BY:	LFS		
CHK. BY:	RW		
DRAWING NO.:	L-9826b		
SHEET	6	OF	9



Testing Evaluation Laboratories Inc.  
 Specimen Complies with Drawing  
 Deviations Noted - TEL# 01993774  
 Date 4/06/2023 Verified by VKW

**FRAME ANCHORING**  
 2X TEST BUCK

DATE: 4/04/23		PRODUCT: FLEETWOOD EDGE SLIDING GLASS DOOR	
SCALE: N.T.S.		PART OR ASSEMBLY: FRAME ANCHORING	
DWG. BY: LFS		NO. DATE BY	
CHK. BY: RW		REVISIONS	
DRAWING NO.: L-9826b			
SHEET 7 OF 9			

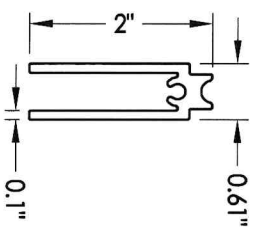


1 FIN JAMB

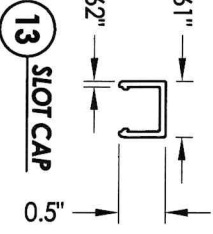
2 HEAD TRACKS

4 FIN KEEP w/ GLASS KEYS

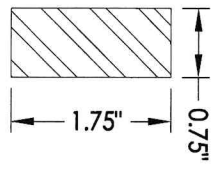
6 FIN LEAD STYLE w/ GLASS KEYS



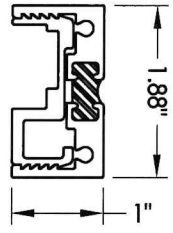
12 SHEAVE BLOCK



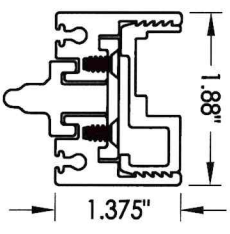
13 SLOT CAP



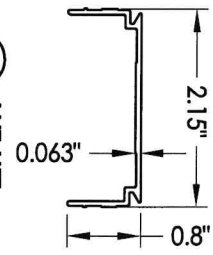
10 REINFORCEMENT



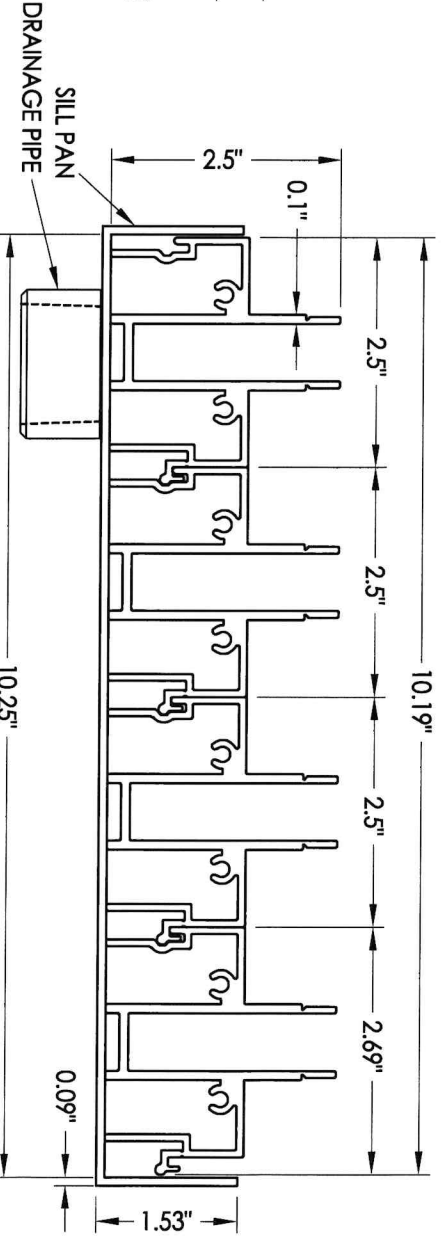
7 TOP RAIL w/ GLASS KEY



9 BOTTOM RAIL w/ GLASS KEY & KEEL (S.S.)



11 ANT-LIFT



3 SILL TRACKS

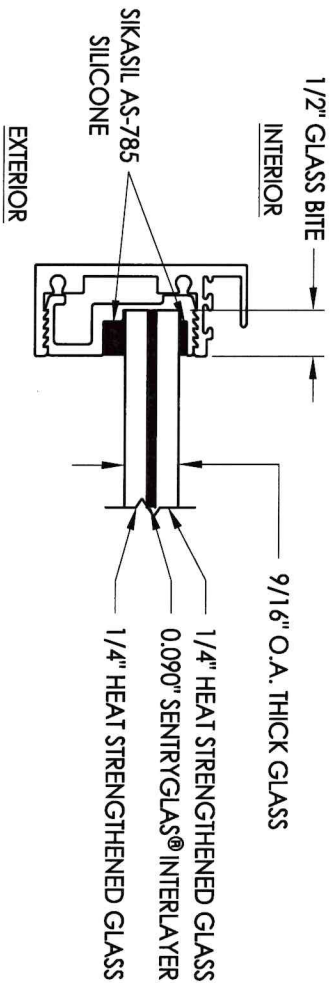
Testing Evaluation Laboratories Inc.  
 Specimen Complies with Drawing  
 Deviations Noted - TEL# 01993775  
 Date 4/06/2023 Verified by VKW

PRODUCT:	FLEETWOOD EDGE SLIDING GLASS DOOR		
PART OR ASSEMBLY:	COMPONENTS		
NO.	DATE	REVISIONS	BY

**RW** BUILDING CONSULTANTS, INC.  
 813.659.9197

DATE:	4/04/23
SCALE:	N.T.S.
DWG. BY:	LFS
CHK. BY:	RW
DRAWING NO.:	L-9826b
SHEET	8 OF 9

BILL OF MATERIALS		MATERIAL
ITEM #	DESCRIPTION	
B	2X TEST BUCK (G >= 0.42)	WOOD
C	1/4" MAX. SHIM SPACE	-
F	#10 X 2" FH WOOD SCREW	STEEL
1	FIN JAMB	6063-T6 ALUM
2	HEAD TRACKS	6063-T6 ALUM
3	SILL TRACKS	6063-T6 ALUM
4	FIN KEEP	6063-T6 ALUM
6	FIN LEAD STILE	6063-T6 ALUM
7	TOP RAIL	6063-T6 ALUM
9	BOTTOM RAIL	6063-T6 ALUM
10	REINFORCEMENT	6063-T6 ALUM
11	ANTI-LIFT	6063-T6 ALUM
12	SHEAVE BLOCK	6063-T6 ALUM
13	SLOT CAP	6063-T6 ALUM
14	MOHAIR WEATHERSTRIP	-
15	MOHAIR WEATHERSTRIP	-
16	BLADE LOCKING HARDWARE	-
17	BLADE CASE	-
18	MOHAIR WEATHERSTRIP	-
20	A4-E SHEAVE	-
21	SILL PAN	5052 -ALUM



**G2** GLAZING DETAIL

Testing Evaluation Laboratories Inc.  
 Specimen Complies with Drawing  
 Deviations Noted - TEL# 01993775  
 Date 4/06/2023 Verified by VKW

PRODUCT:	FLEETWOOD EDGE SLIDING GLASS DOOR
PART OR ASSEMBLY:	BILL OF MATERIALS, COMPONENTS & GLAZING DETAILS

NO.	DATE	BY

**RW** BUILDING CONSULTANTS, INC.  
 813.659.9197

DATE:	4/04/23
SCALE:	N.T.S.
DWG. BY:	LFS
CHK. BY:	RW
DRAWING NO.:	L-9826b
SHEET:	9 OF 9

**TABLE OF CONTENTS**

SHEET #	DESCRIPTION
1	Table of Contents
2	Test Elevation
3	Horizontal Cross Section
4	Horizontal Cross Section
5	Vertical Cross Section
6	Vertical Cross Section
7	Frame Anchoring
8	Components
9	Bill of Materials & Glazing Detail

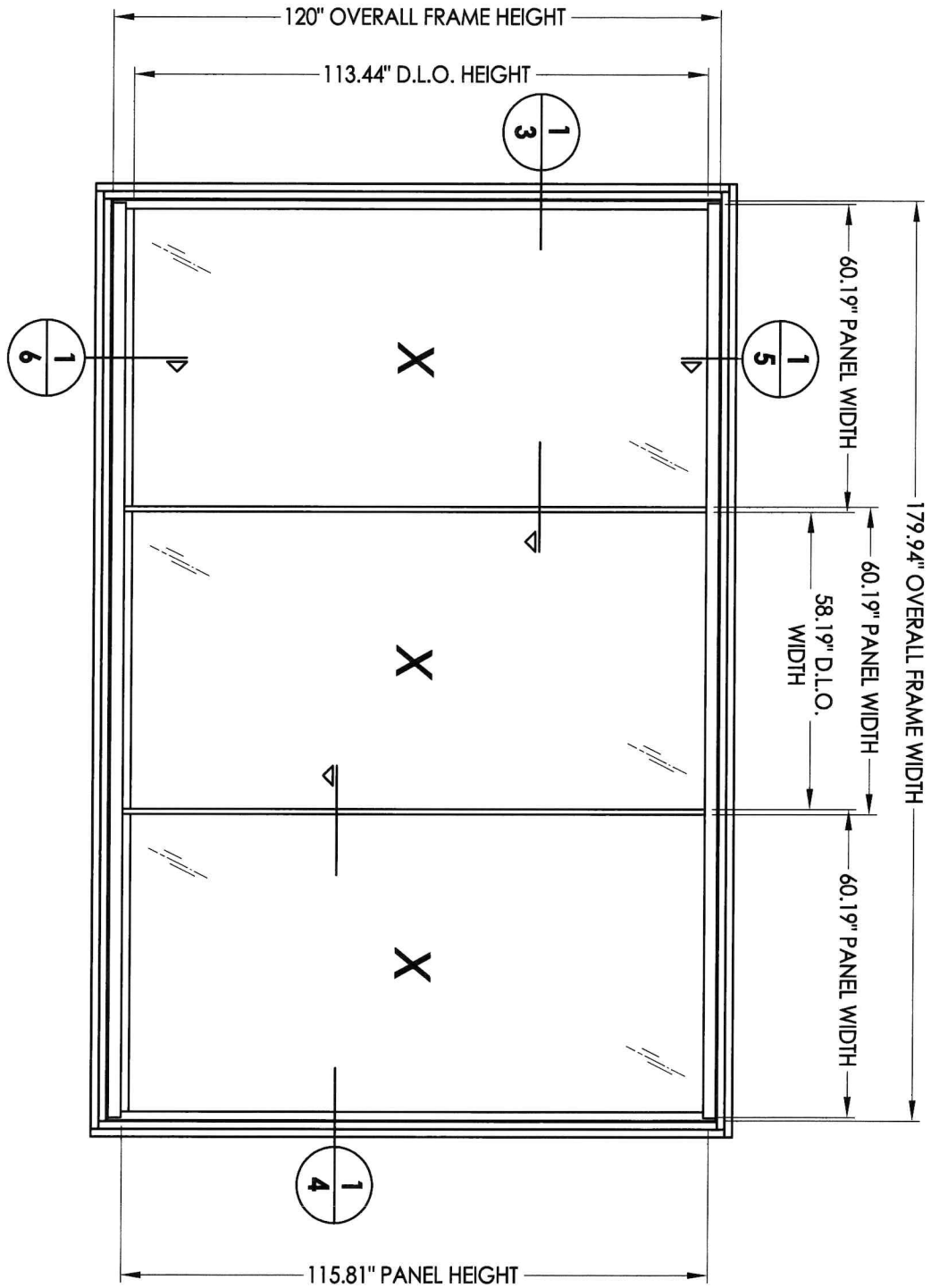
Testing Evaluation Laboratories Inc.  
 Specimen Complies with Drawing  
 Deviations Noted - TEL# 01993774  
 Date 4/06/2023 Verified by WKW

PRODUCT:		FLEETWOOD EDGE SLIDING GLASS DOOR SPEC #2
PART OR ASSEMBLY:		TABLE OF CONTENTS
NO.	DATE	BY

REVISIONS



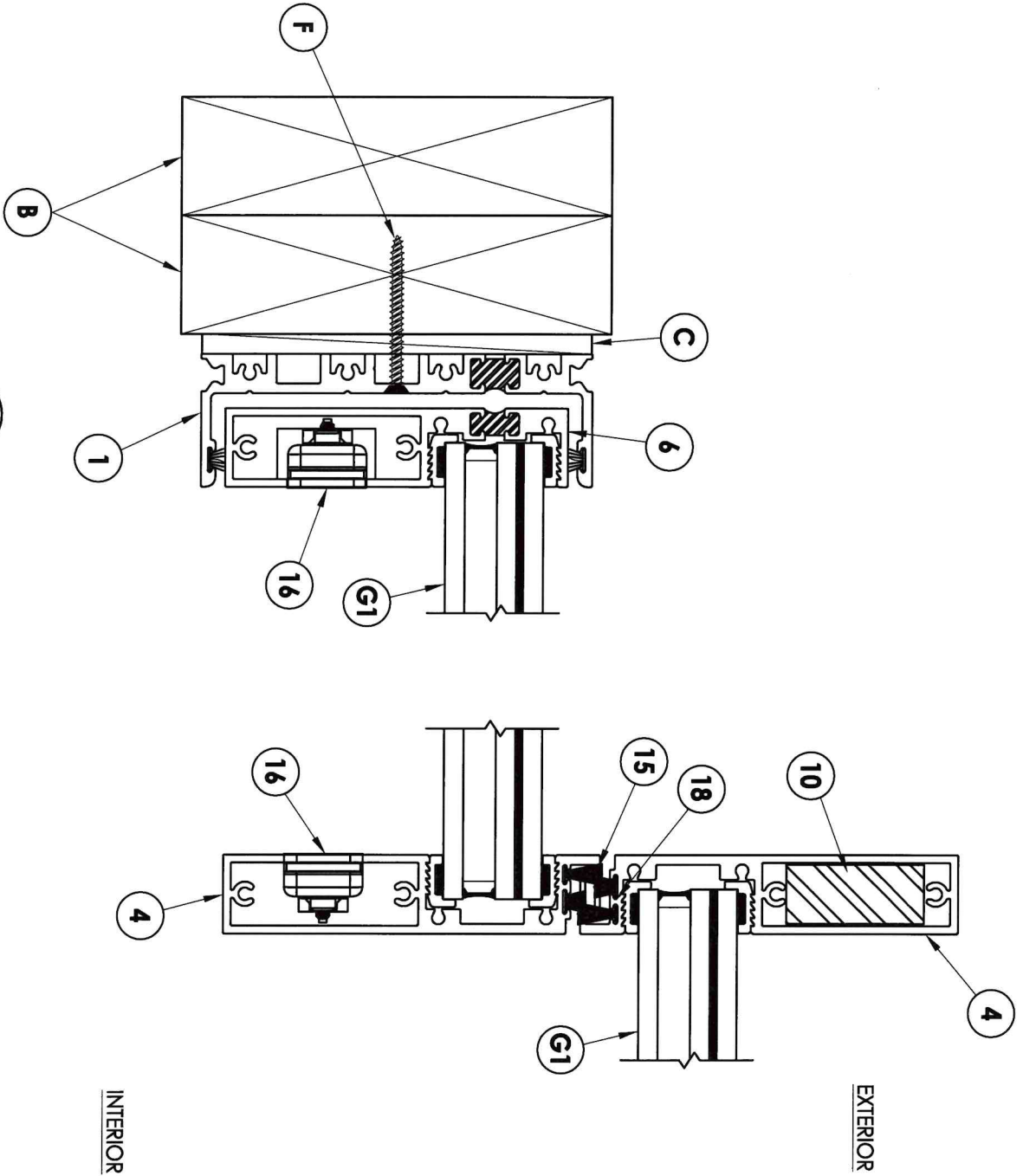
DATE:	4/04/23
SCALE:	N.T.S.
DWG. BY:	LFS
CHK. BY:	RW
DRAWING NO.:	L-9826a
SHEET	1 OF 9



Testing Evaluation Laboratories Inc.  
 Specimen Complies with Drawing  
 Deviations Noted - TEL# 01993774  
 Date 4/06/2023 Verified by VKW

DATE: 4/04/23		PRODUCT: FLEETWOOD EDGE SLIDING GLASS DOOR	
SCALE: N.T.S.		PART OR ASSEMBLY: TEST ELEVATION	
DWG. BY: LFS		BY	
CHK. BY: RW		NO.	
DRAWING NO.: L-9826d		DATE	
SHEET 2 OF 9		REVISIONS	

**RW** BUILDING CONSULTANTS, INC.  
 813.659.9197



1 HORIZONTAL CROSS SECTION  
3

Testing Evaluation Laboratories Inc.  
Specimen Complies with Drawing  
Deviations Noted - TEI# 01993774  
Date 4/06/2023 Verified by VKW

NO.	DATE	BY

PRODUCT: FLEETWOOD  
EDGE SLIDING GLASS DOOR

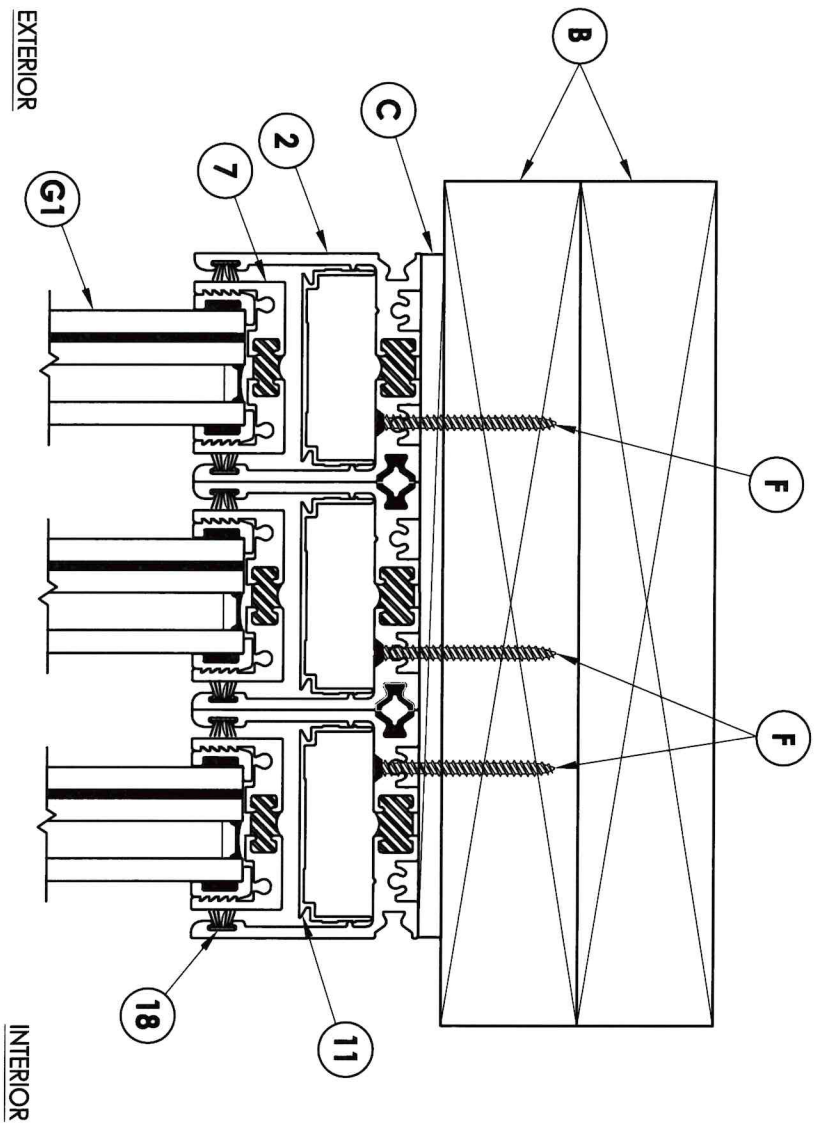
PART OR ASSEMBLY:  
HORIZONTAL CROSS SECTION

**R<sup>9</sup>W** BUILDING CONSULTANTS, INC.  
813.659.9197

DATE: 4/04/23  
SCALE: N.T.S.  
DWG. BY: LFS  
CHK. BY: RW  
DRAWING NO.: L-9826d  
SHEET 3 of 9




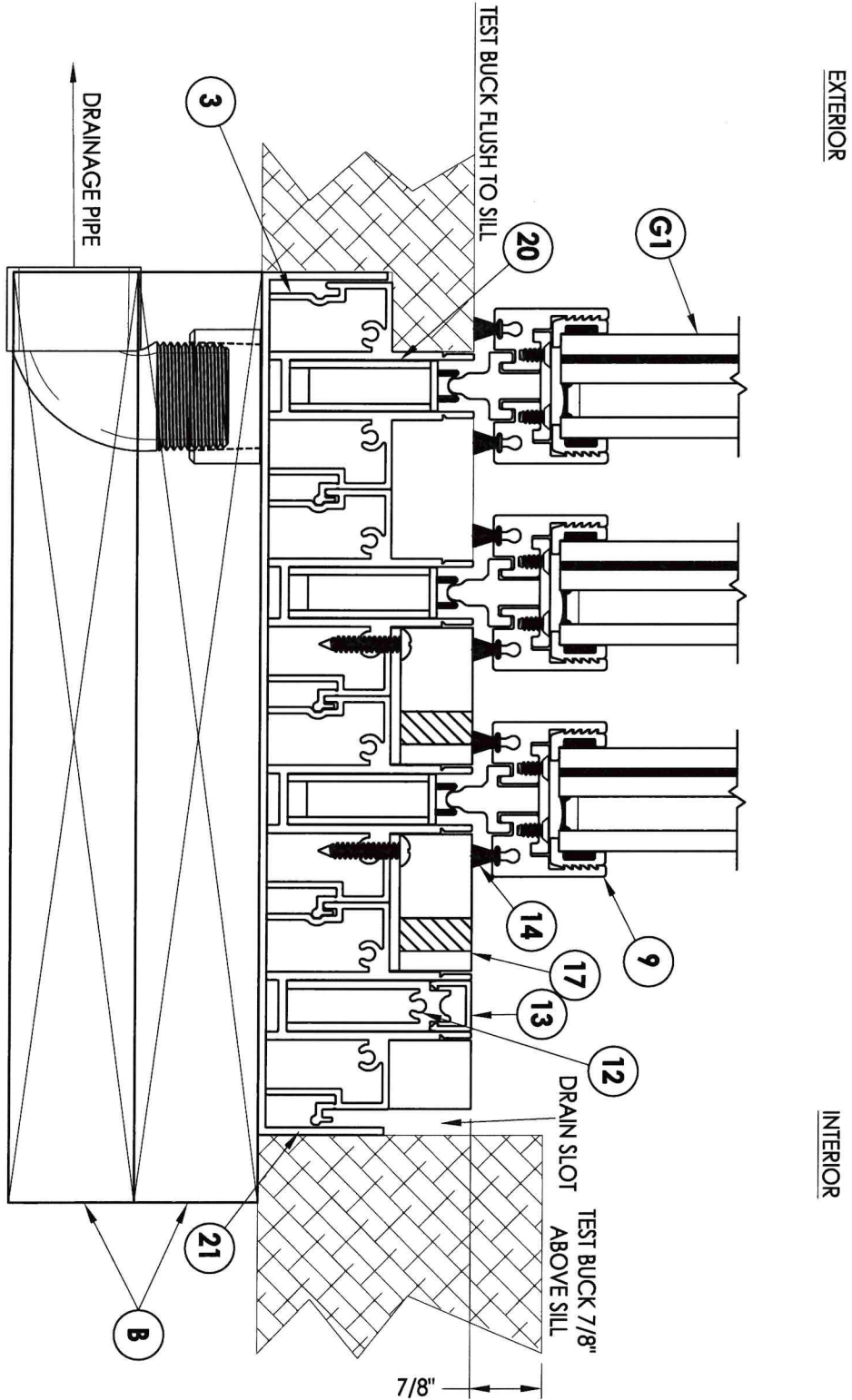




1 / 5 VERTICAL CROSS SECTION

Testing Evaluation Laboratories Inc.  
 Specimen Complies with Drawing  
 Deviations Noted - TEL# 01993774  
 Date 4/06/2023 Verified by VKW

 R.W. BUILDING CONSULTANTS, INC. 813.659.9197		PRODUCT: FLEETWOOD EDGE SLIDING GLASS DOOR	
DATE: 4/04/23 SCALE: N.T.S. DWG. BY: LFS CHK. BY: RW DRAWING NO.: L-9826d SHEET 5 of 9		PART OR ASSEMBLY: VERTICAL CROSS SECTION	
NO.	DATE	BY	REVISIONS



EXTERIOR

INTERIOR

Testing Evaluation Laboratories Inc.  
 Specimen Complies with Drawing  
 Deviations Noted - TEL# 01993774  
 Date 4/06/2023 Verified by VKW

1 VERTICAL CROSS SECTION  
 6

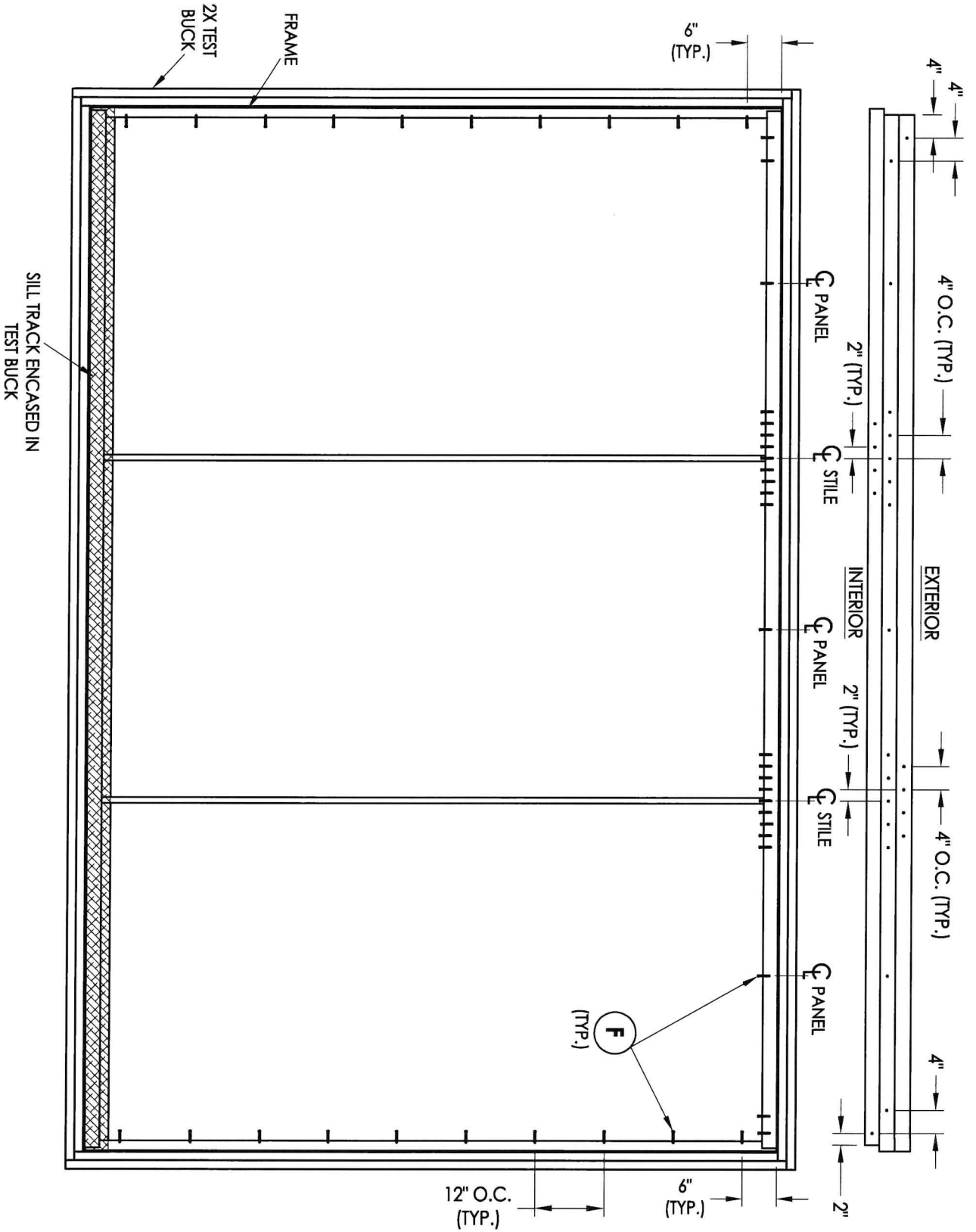
PRODUCT: FLEETWOOD  
 EDGE SLIDING GLASS DOOR

PART OR ASSEMBLY:  
 VERTICAL  
 CROSS SECTION

NO.	DATE	REVISIONS	BY

**RW** BUILDING  
 CONSULTANTS, INC.  
 813.659.9197

DATE: 4/04/23  
 SCALE: N.T.S.  
 DWG. BY: LFS  
 CHK. BY: RW  
 DRAWING NO.: L-9826d  
 SHEET 6 OF 9



Testing Evaluation Laboratories Inc.  
 Specimen Complies with Drawing  
 Deviations Noted - TEL # 01993774  
 Date 4/06/2023 Verified by VKW

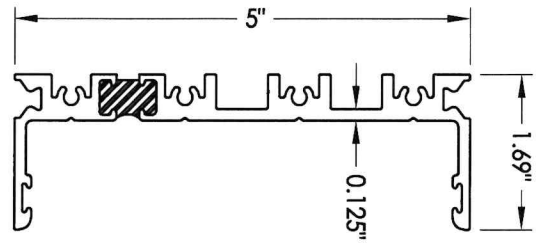
**FRAME ANCHORING**  
 2X TEST BUCK

NO.	DATE	BY

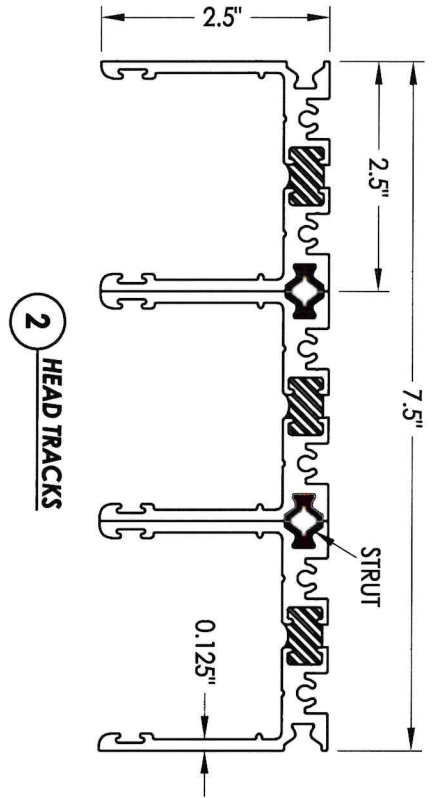
PRODUCT:	FLEETWOOD EDGE SLIDING GLASS DOOR
PART OR ASSEMBLY:	FRAME ANCHORING

**RW BUILDING CONSULTANTS, INC.**  
 813.659.9197

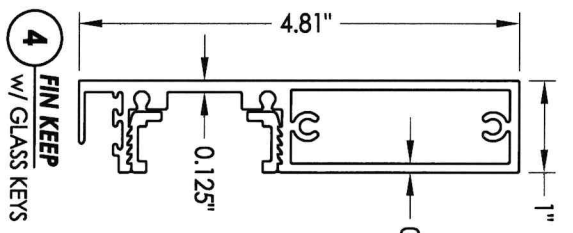
DATE:	4/04/23
SCALE:	N.T.S.
DWG. BY:	LFS
CHK. BY:	RW
DRAWING NO.:	L-9826d
SHEET	7 OF 9



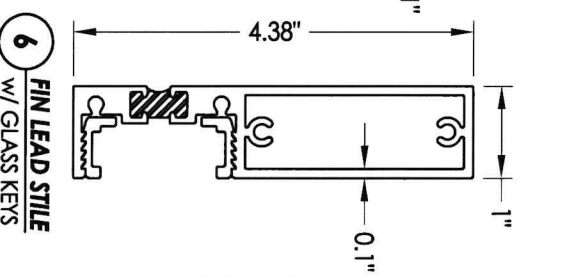
**1** FIN JAMB



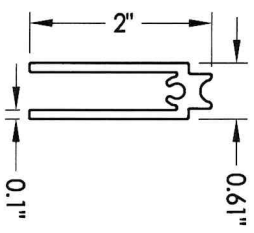
**2** HEAD TRACKS



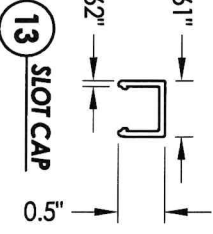
**4** FIN KEEP  
w/ GLASS KEYS



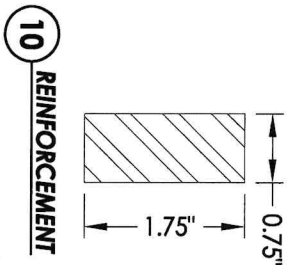
**6** FIN LEAD STILE  
w/ GLASS KEYS



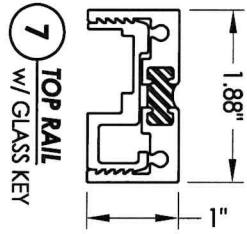
**12** SHEAVE BLOCK



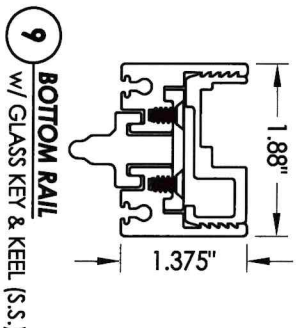
**13** SLOT CAP



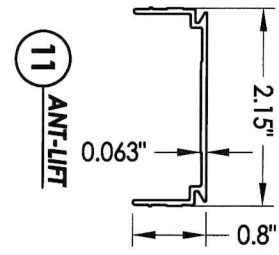
**10** REINFORCEMENT



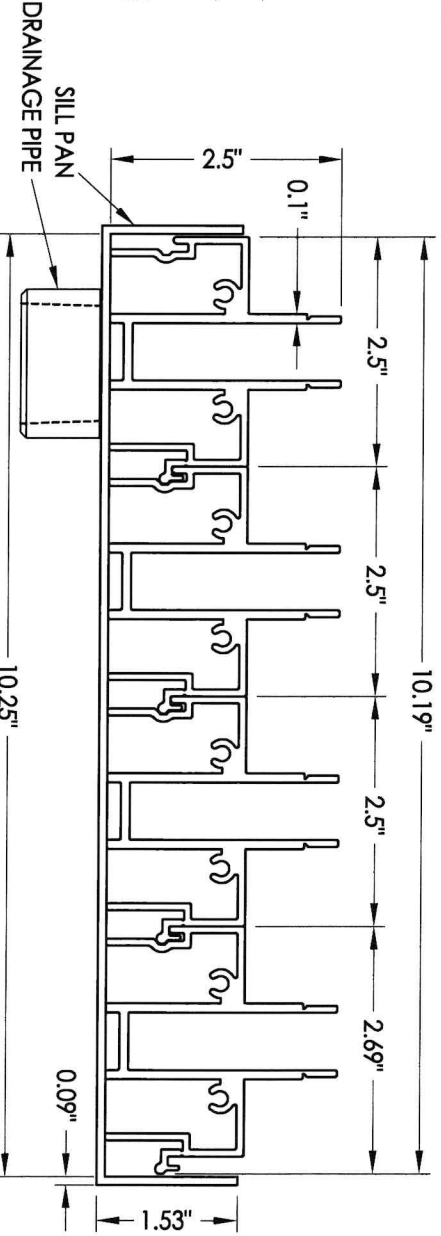
**7** TOP RAIL  
w/ GLASS KEY



**9** BOTTOM RAIL  
w/ GLASS KEY & KEEL (S.S.)



**11** ANT-LIFT



**3** SILL TRACKS

Testing Evaluation Laboratories Inc.  
Specimen Complies with Drawing  
Deviations Noted - TEL # 01993774  
Date 4/06/2023 Verified by VKW

NO.	DATE	REVISIONS	BY

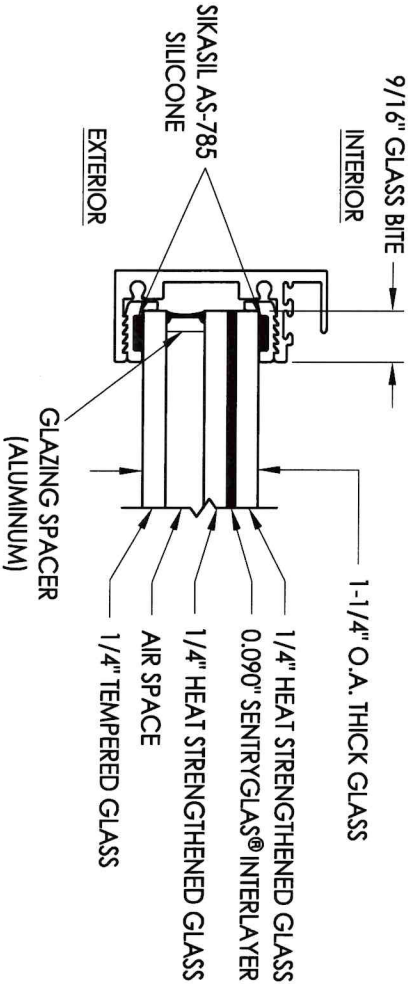
PRODUCT:	FLEETWOOD EDGE SLIDING GLASS DOOR
PART OR ASSEMBLY:	COMPONENTS

**RW BUILDING CONSULTANTS, INC.**  
813.659.9197

DATE: 4/04/23  
SCALE: N.T.S.  
DWG. BY: LFS  
CHK. BY: RW  
DRAWING NO.: L-9826d  
SHEET 8 OF 9

**BILL OF MATERIALS**

ITEM #	DESCRIPTION	MATERIAL
B	2X TEST BUCK (G >= 0.42)	WOOD
C	1/4" MAX. SHIM SPACE	-
F	#10 X 2" FH WOOD SCREW	STEEL
1	FIN JAMB	6063-T6 ALUM
2	HEAD TRACKS	6063-T6 ALUM
3	SILL TRACKS	6063-T6 ALUM
4	FIN KEEP	6063-T6 ALUM
6	FIN LEAD STILE	6063-T6 ALUM
7	TOP RAIL	6063-T6 ALUM
9	BOTTOM RAIL	6063-T6 ALUM
10	REINFORCEMENT	6063-T6 ALUM
11	ANTI-LIFT	6063-T6 ALUM
12	SHEAVE BLOCK	6063-T6 ALUM
13	SLOT CAP	6063-T6 ALUM
14	MOHAIR WEATHERSTRIP	-
15	MOHAIR WEATHERSTRIP	-
16	BLADE LOCKING HARDWARE	-
17	BLADE CASE	-
18	MOHAIR WEATHERSTRIP	-
20	A4-E SHEAVE	-
21	SILL PAN	5052-ALUM



**G1** GLAZING DETAIL

Testing Evaluation Laboratories Inc.  
 Specimen Complies with Drawing  
 Deviations Noted - TEL# 01993774  
 Date 4/06/2023 Verified by VKW

PRODUCT: FLEETWOOD  
 EDGE SLIDING GLASS DOOR

PART OR ASSEMBLY:  
 BILL OF MATERIALS, COMPONENTS  
 & GLAZING DETAILS

NO.	DATE	BY

REVISIONS

**R.W. BUILDING CONSULTANTS, INC.**  
 813.659.9197

DATE: 4/04/23  
 SCALE: N.T.S.  
 DWG. BY: LFS  
 CHK. BY: RW  
 DRAWING NO.: L-9826d  
 SHEET 9 OF 9