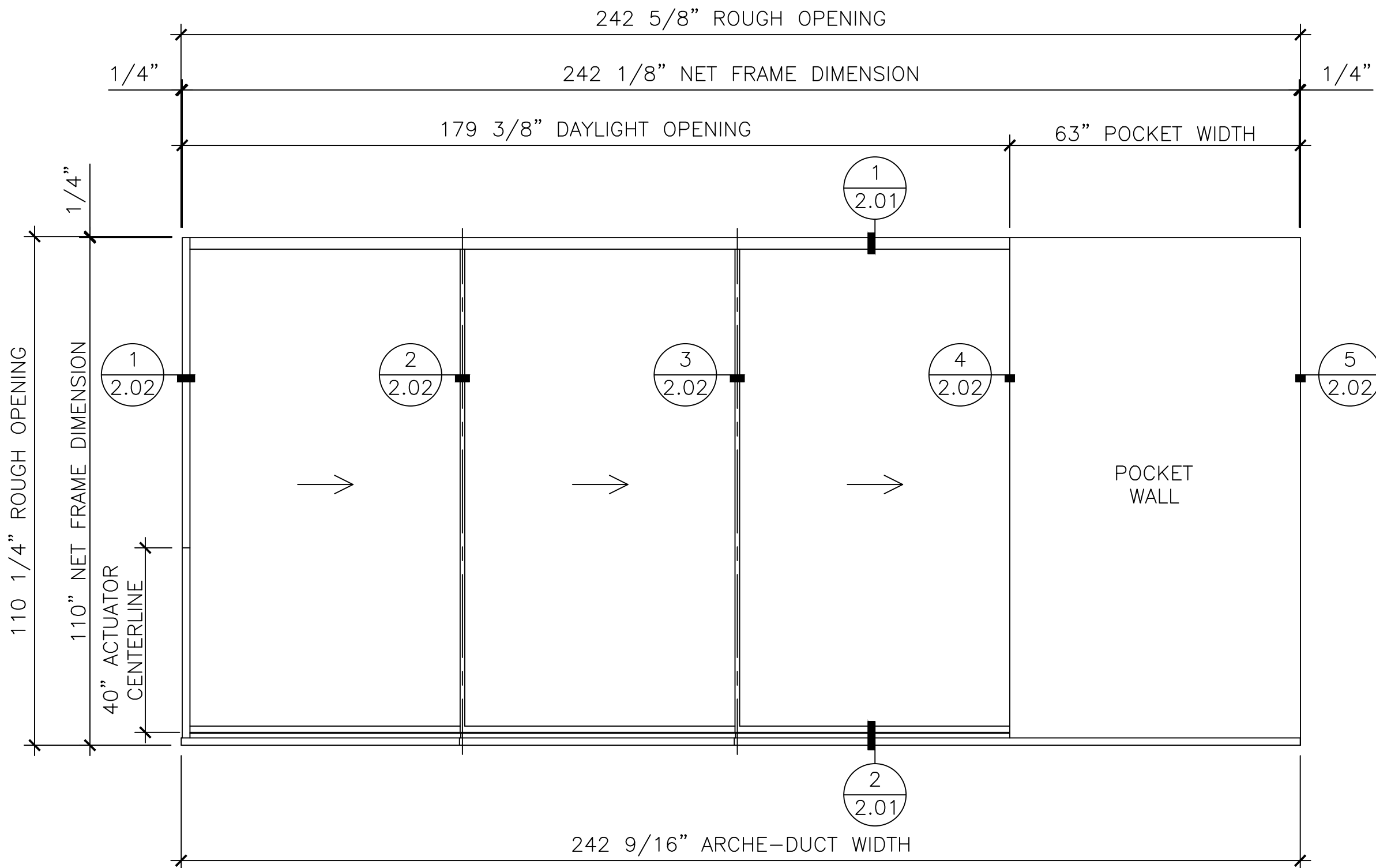


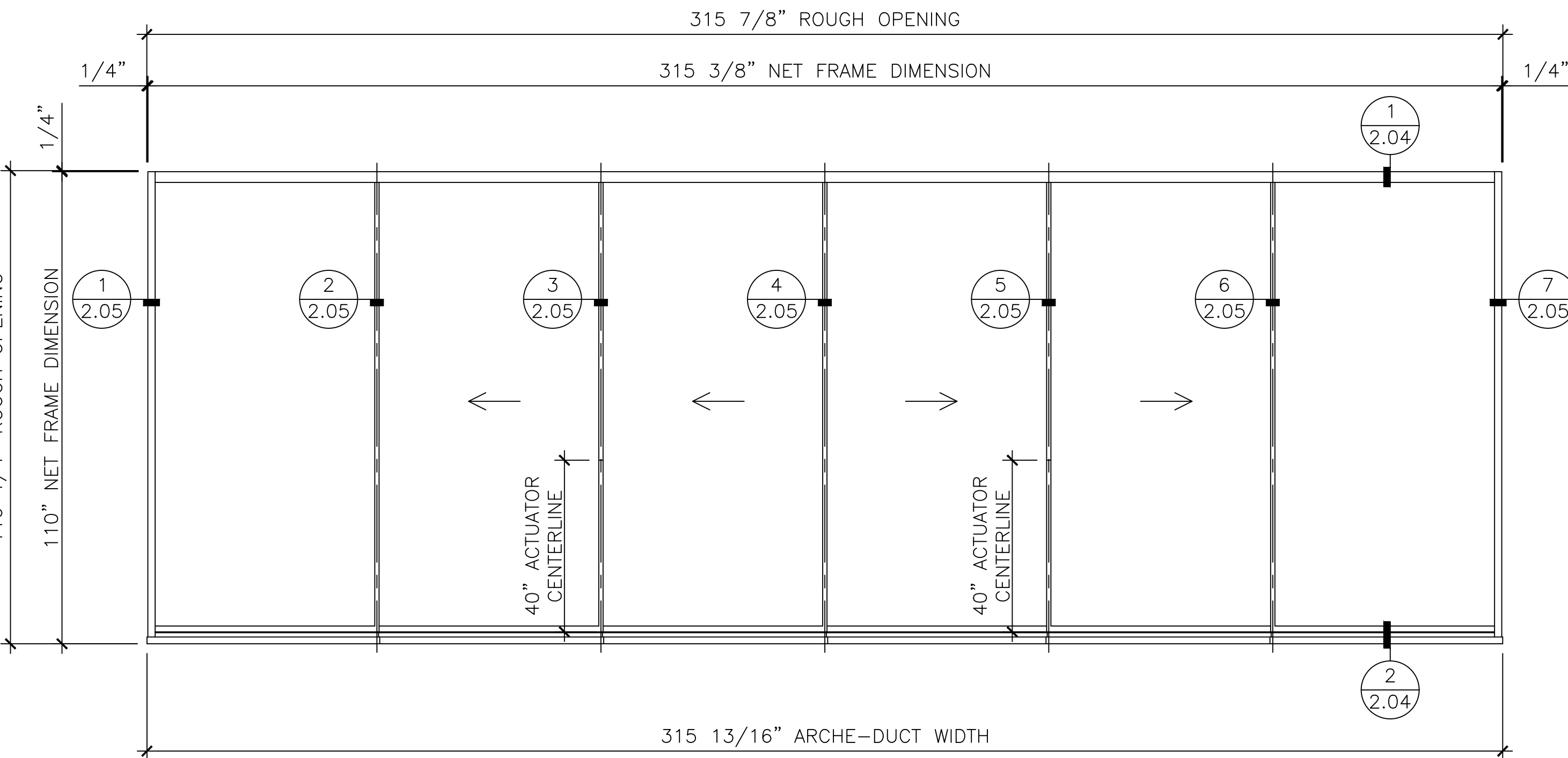
IMPORTANT NOTES:	
1.	FLEETWOOD WILL NOT USE THESE DRAWINGS TO PRODUCE PRODUCT. THE DEALER IS SOLELY RESPONSIBLE TO MAKE SURE THE CONFIRMED ORDER TO THE FACTORY REFLECTS THE INFORMATION HEREIN.
2.	INSTALLATION: THESE DRAWINGS ARE NOT INTENDED TO BE USED AS INSTALLATION INSTRUCTIONS. INSTALLATION INSTRUCTIONS ARE AVAILABLE ONLINE AT WWW.FLEETWOODUSA.COM UNDER EACH PRODUCT PAGE, OR BY REQUEST.
3.	FIELD TESTING: ALL STRUCTURALLY LABELED FLEETWOOD DOORS AND WINDOWS WILL BE MANUFACTURED IN PRECISELY THE SAME MANNER AS THE APPROVED CERTIFIED TEST SPECIMEN. THERE IS NO OTHER SPECIFIC GUARANTEE REGARDING WEATHER PERFORMANCE OR FIELD TEST RESULTS. ANY FIELD TESTING PERFORMED MUST BE PER AAMA 502-90;TEST METHOD Δ, AND PERFORMED "IMMEDIATELY AFTER INSTALLATION" AS REQUIRED IN PARAGRAPH TWO OF "SHORT FORM FIELD TESTING SPECIFICATIONS" ON THE INSIDE COVER. FIELD TEST RESULTS WILL NOT BE CONSIDERED VALID UNLESS PERFORMED WITHIN FOUR (4) WEEKS OF SPECIMEN INSTALLATION. DUE TO UNCONTROLLABLE INSTALLATION AND TEST VARIABLES, EXPECT ONLY 75% OF LABORATORY PERFORMANCE RESULT IN TYPICAL FIELD INSTALLATION CONDITIONS. ANY FIELD TESTING MUST COMPLY WITH FLEETWOOD'S FIELD TESTING PROCEDURE. THIS PROCEDURE IS AVAILABLE ONLINE AT WWW.FLEETWOODUSA.COM ON THE E-DEALER PAGE, OR BY REQUEST.
4.	CORNER SEALING: BECAUSE OF THE POTENTIAL FOR SEALANT DISRUPTION DURING HANDLING AND ERECTION, THE INSTALLER IS RESPONSIBLE FOR ALL FRAME CORNER SEALS, WHETHER OR NOT THESE FRAMES WERE FACTORY ASSEMBLED.
5.	FRAME MULLIONS, TRANSOMS, & COMPENSATING CHANNELS: FLEETWOOD RECOMMENDS STRUCTURAL ANCHORING OF ALL MULLIONS, TRANSOMS, AND COMPENSATING CHANNELS. THESE HAVE NOT BEEN TESTED FOR AIR, WATER, STRUCTURAL, OR WIND LOAD PERFORMANCE. PRODUCTS ORDERED WITH NAIL-FIN FRAMES WILL REQUIRE THE REMOVAL OF THE NAIL FIN'S IN THE FIELD BY THE INSTALLER WHERE BLOCK FRAMES ARE REQUIRED. BLOCK FRAMES ARE REQUIRED AT THE JAMBS OF I-MULLED PRODUCTS, THE SILL OF I-MULLED PRODUCTS, AND THE HEAD AND SILL OF STACKED/TRANSOM PRODUCTS. DEAD LOAD FROM FIELD STACKING NEEDS TO BE CONFIRMED WITH A STRUCTURAL ENGINEER.
6.	HARDWARE: MANUFACTURER'S STANDARD
7.	WARRANTY: ALL INVOLVED PARTIES SHOULD REVIEW THE WARRANTY, AND THE TERMS AND CONDITIONS BY WHICH THE JOB WILL BE PROCESSED. A COPY CAN BE REVIEWED ON THE WEBSITE OR BY CONTACTING THE FACTORY DIRECTLY.
8.	WINDOW AND DOOR ELEVATIONS: DO NOT SCALE THE WINDOW AND DOOR ELEVATION DRAWINGS. USE ONLY THE DIMENSIONS PROVIDED ON THE ELEVATIONS FOR REFERENCE. THE INTENT OF THE ELEVATIONS ARE TO SHOW THE OVERALL NET FRAME SIZES AND DEPICT PRODUCT CONFIGURATION. PLEASE CONTACT THE FACTORY WHEN CRITICAL DIMENSIONS, SUCH AS INTERLOCKER CENTERLINES, ARE REQUIRED.
GENERAL NOTES	
1.	ELEVATIONS ARE SHOWN FROM EXTERIOR UNLESS OTHERWISE NOTED
2.	ANCHOR / WALL FASTENER – LOCATION, SPACING AND QUANTITY TO BE DETERMINED PER DESIGN PRESSURE REQUIREMENTS BY STRUCTURAL ENGINEER AND/OR CERTIFIED TEST DRAWINGS
3.	THE FOLLOWING TABLES ARE THIS JOBS SPECIFIC SERIES DEFAULT OPTIONS UNLESS NOTED ON AN ELEVATION.
4.	INITIAL RELEASE PER QUOTE 481589-V3
SERIES EDGE s	
PRODUCT DESCRIPTION: SLIDING DOOR	
FINISH:	CLASS 1, BLACK ANODIZED
HARDWARE:	BLACK PAINTED STAINLESS STEEL
GLASS:	1.25" CLEAR CARDINAL 366 6MM-T, 0.75 ARGON, CLEAR 6MM-T (GLAZED)
FRAME:	BLOCK (FIELD ASSEMBLED)
ACTUATOR HEIGHT:	40" (FROM BOTTOM OF PANEL)
ARCHE-DUCT:	OPT-E2;(1/2" SIDE DRAIN-EXT)
DRAIN FROM EDGE:	6"
DRAIN SPACING:	60"
FIN PULL:	NO
HEAD:	STANDARD (STAGGERED)
KEEL SHEAVE:	(A4-E),(A1-E)
KEEPS:	STANDARD (OPT-A)
POCKET KEEP:	STANDARD
POCKET TYPE:	CLOSED (STANDARD)
POCKET WALL KEEP:	2 PIECE (STD)
SILL:	(SFD-E)-STAGGERED



D1 (1) ONE REQ'D THUS
SERIES EDGE |s| XXXP
ROOM REF.: E03-SPA

STACKS TO: THE EXTERIOR (OF THE LEFT PANEL)
FIN PULL: YES-LEAD STILE (ROOM SIDE; EDGE PULL)
LEAD PANEL LEFT: FIN JAMB INT. W/ BLADE (OPT-D)

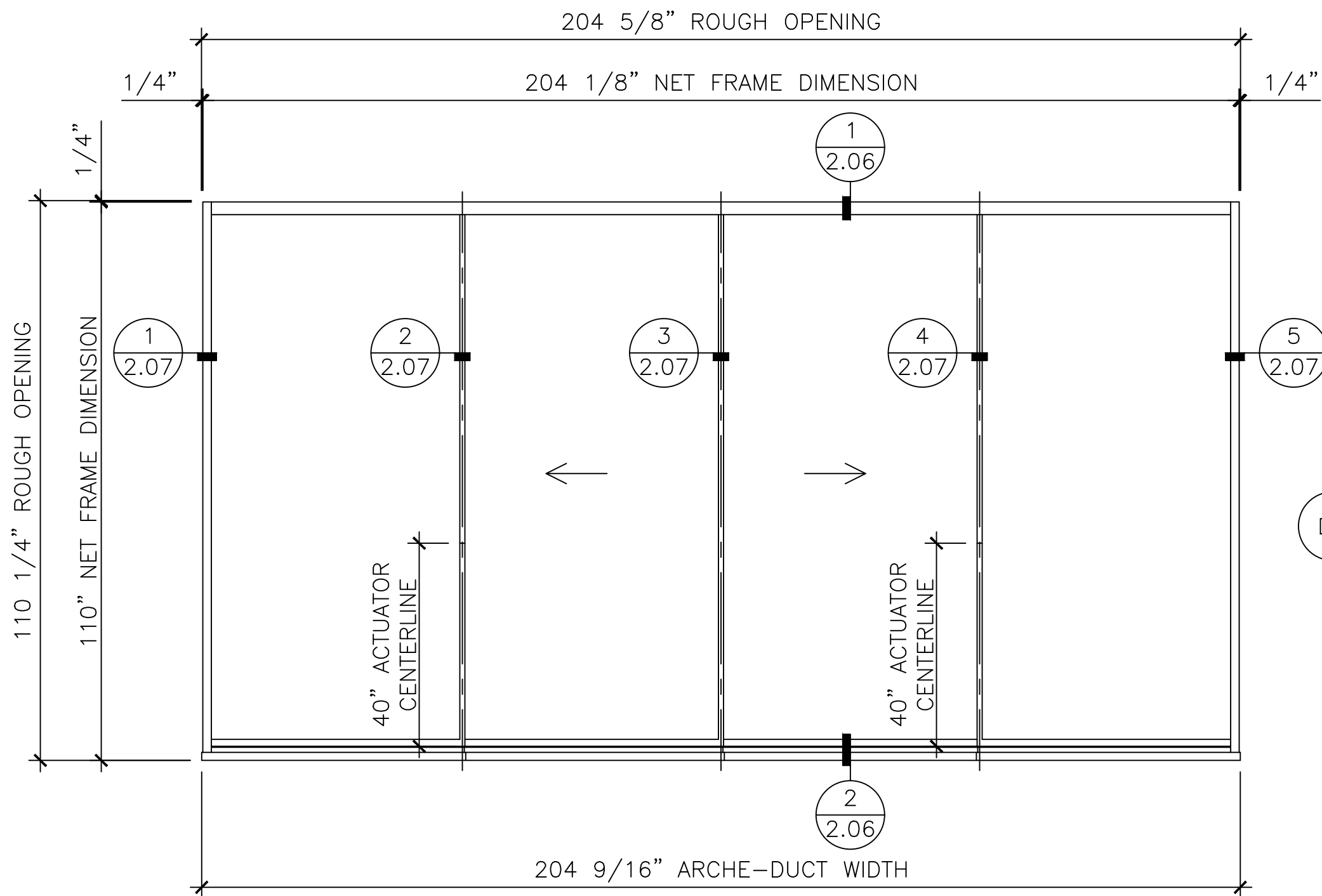
NOTES:
1. REFERENCE DETAIL 1/2.03 FOR OPEN POSITION
2. REFERENCE DETAIL 1/2.08 FOR ARCHE-DUCT PLAN VIEW



D2 (1) ONE REQ'D THUS
SERIES EDGE |s| OXIXXO
ROOM REF.: FUTURE GYM

STACKS TO: THE INTERIOR (OF THE LEFT PANEL)
FIXED PANEL LEFT: SINGLE JAMB (OPT-A)
FIXED PANEL RIGHT: SINGLE JAMB (OPT-A)
FIN PULL: NO (OPT-A)
REVERSE KEEPS: BLADE IN FIN-KEEP, REVERSE STACK (OPT-A)

NOTES:
1. REFERENCE DETAIL 2/2.08 FOR ARCHE-DUCT PLAN VIEW



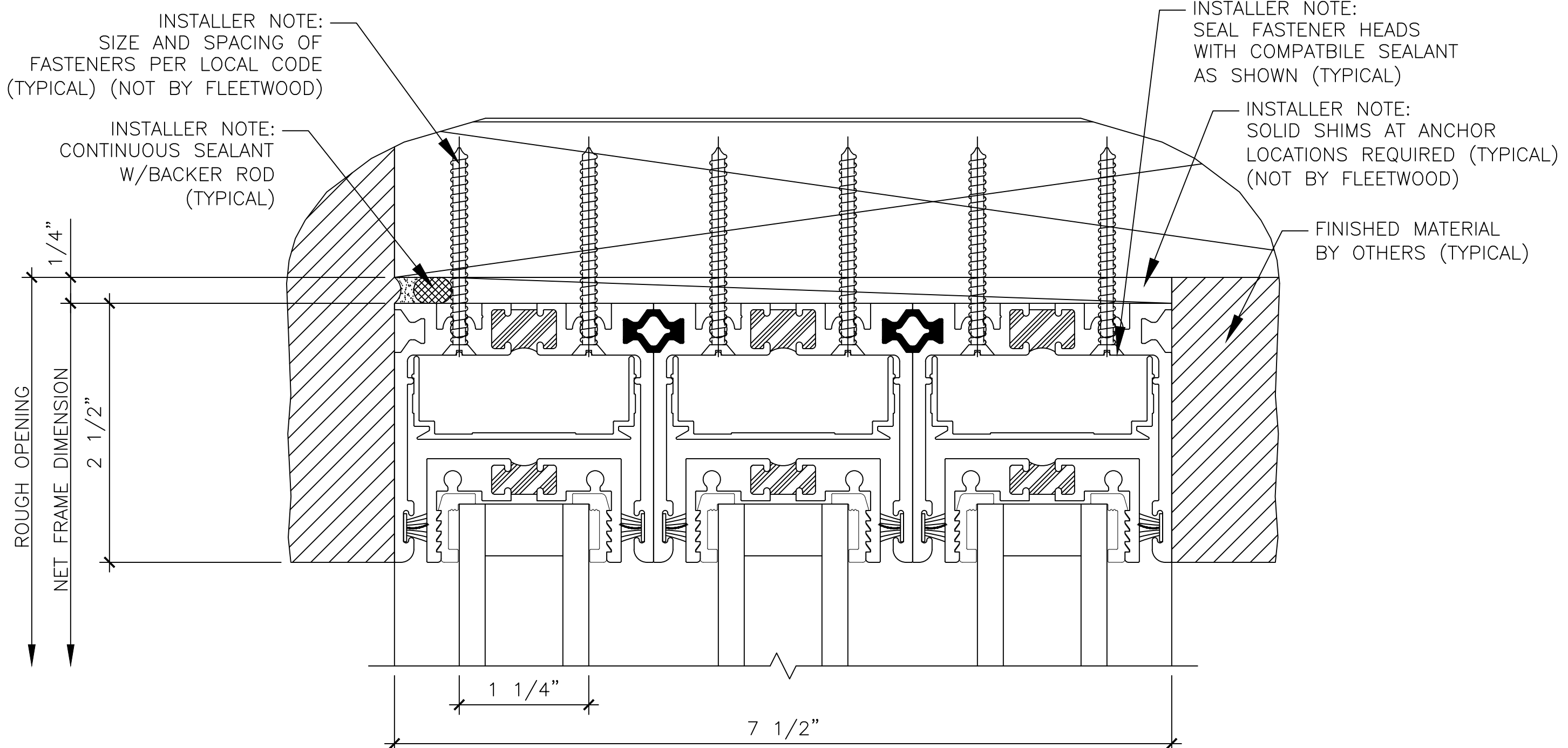
D3 (1) ONE REQ'D THUS
SERIES EDGE |s| OXIXO
ROOM REF.: E02-THEATER

STACKS TO: THE INTERIOR (OF THE LEFT PANEL)
FIXED PANEL LEFT: SINGLE JAMB (OPT-A)
FIXED PANEL RIGHT: SINGLE JAMB (OPT-A)
FIN PULL: NO (OPT-A)
REVERSE KEEPS: BLADE IN FIN-KEEP, REVERSE STACK (OPT-A)

NOTES:
1. REFERENCE DETAIL 3/2.08 FOR ARCHE-DUCT PLAN VIEW

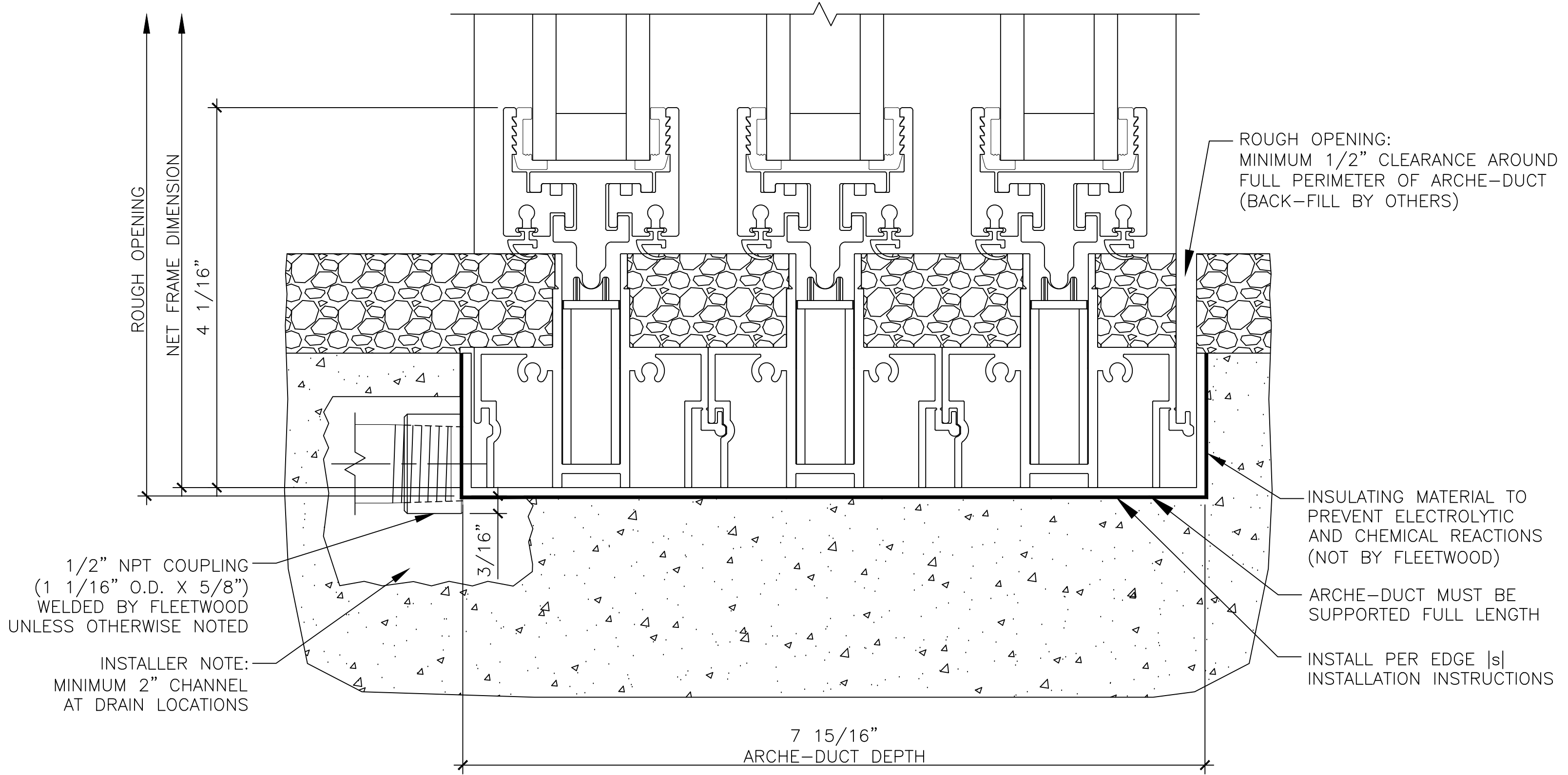
FOR ILLUSTRATION ONLY

<div><div></div><div><div>FLEETWOOD</div><div>W I N D O W S & D O O R S</div></div></div>				1 FLEETWOOD WAY CORONA, CA 92879 www.fleetwoodusa.com		MATERIAL: SERIES EDGE s		DRAWN BY: DATE:		REVISIONS: REV-1		DATE 3/17/21		DRAWN BY N.T.		COMMENTS PER MARKED UP DRAWINGS	

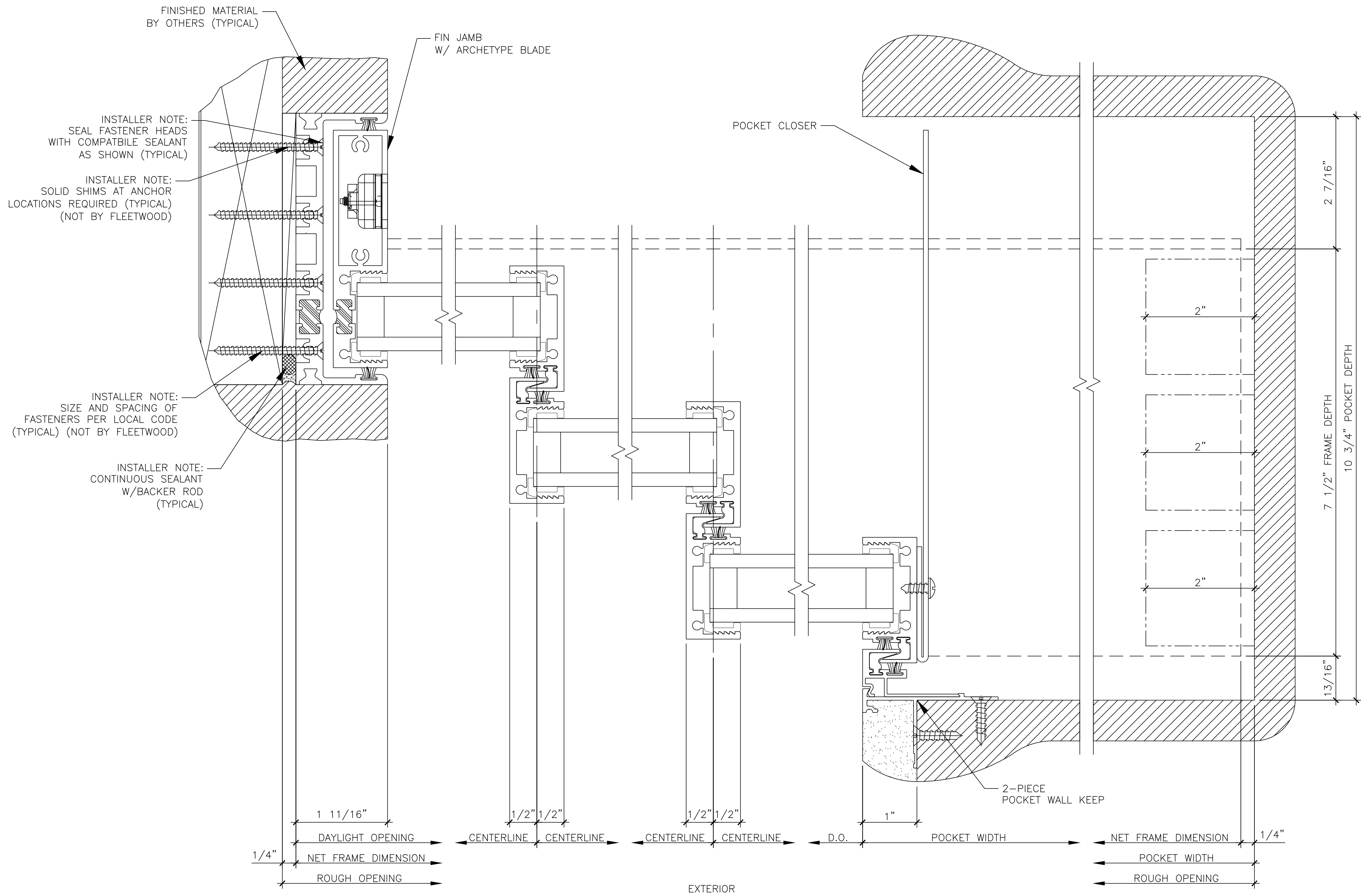


EXTERIOR

1 SERIES EDGE |s| HEAD
SCALE: 1'-0"=1'-0"



2 SERIES EDGE |s| SILL
SCALE: 1'-0"=1'-0"



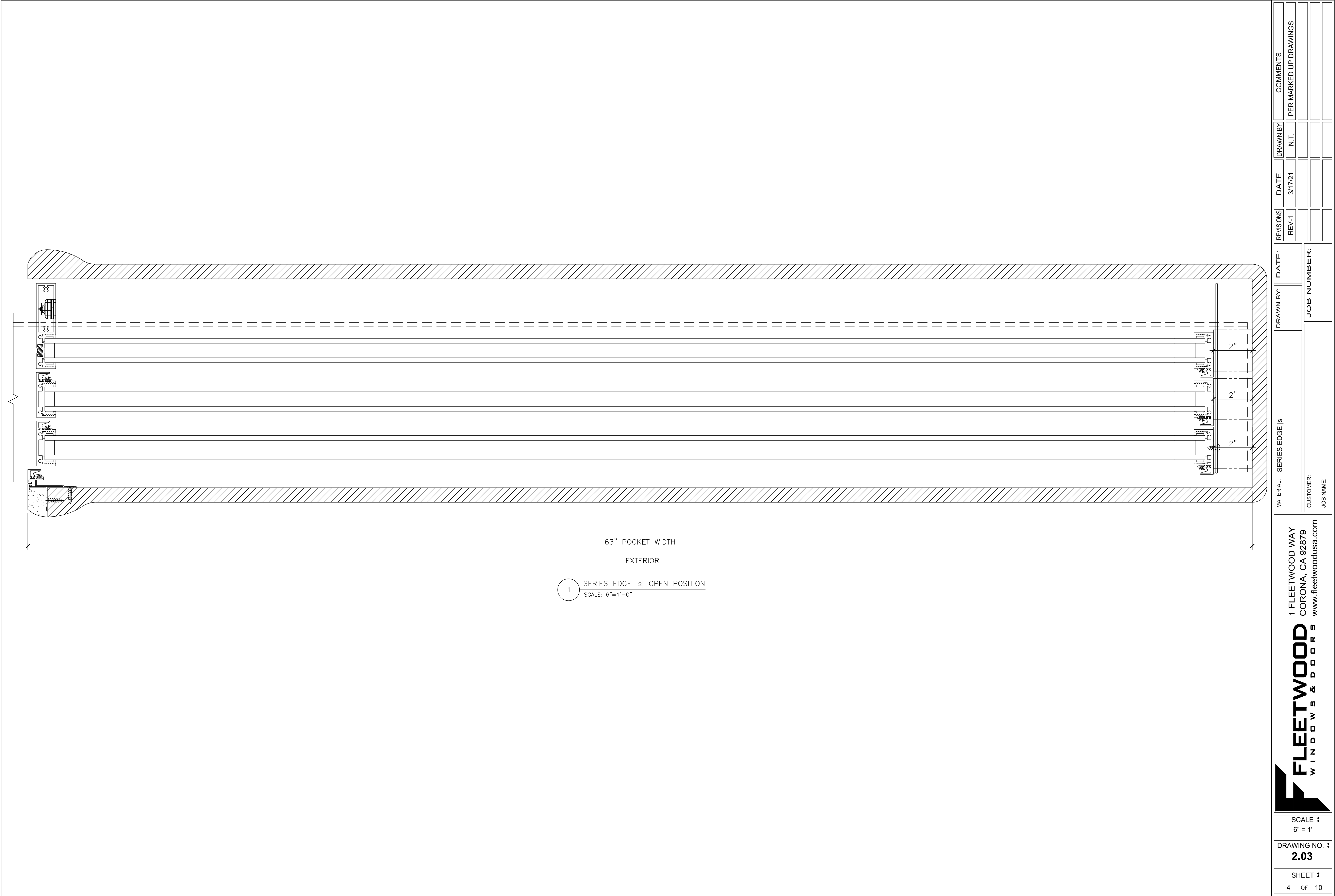
1 SERIES EDGE |s| JAMB
SCALE: 1'-0"=1'-0"

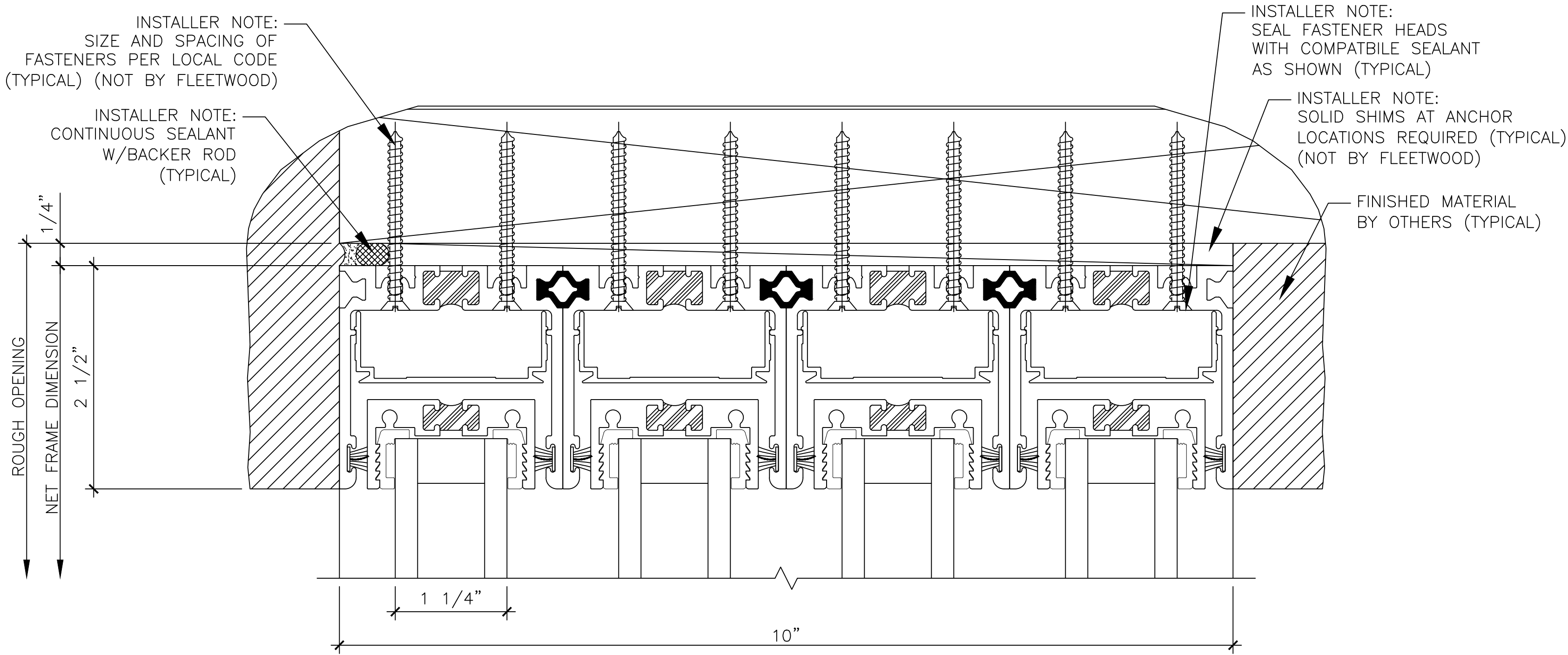
2 SERIES EDGE |s| KEEPS
SCALE: 1'-0"=1'-0"

3 SERIES EDGE |s| KEEPS
SCALE: 1'-0"=1'-0"

4 SERIES EDGE |s| POCKET KEEP
SCALE: 1'-0"=1'-0"

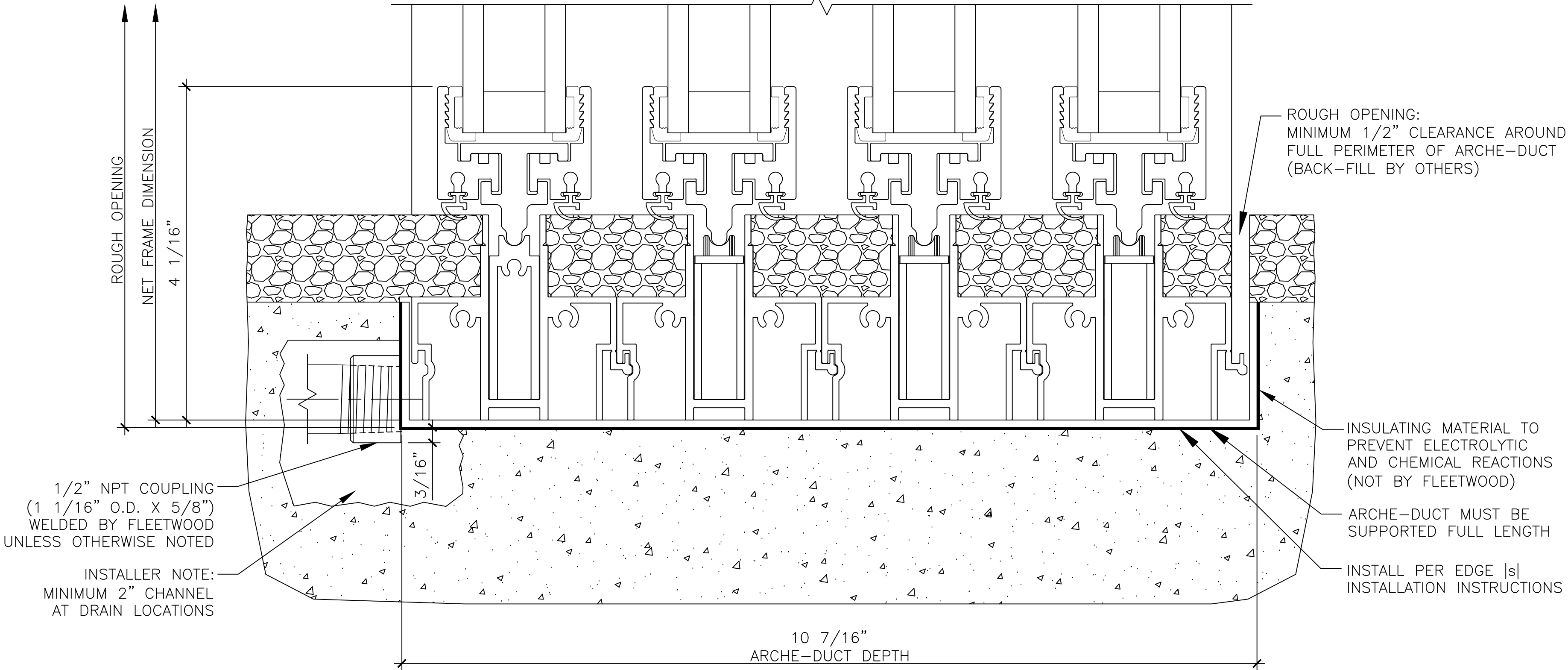
5 SERIES EDGE |s| POCKET JAMB
SCALE: 1'-0"=1'-0"



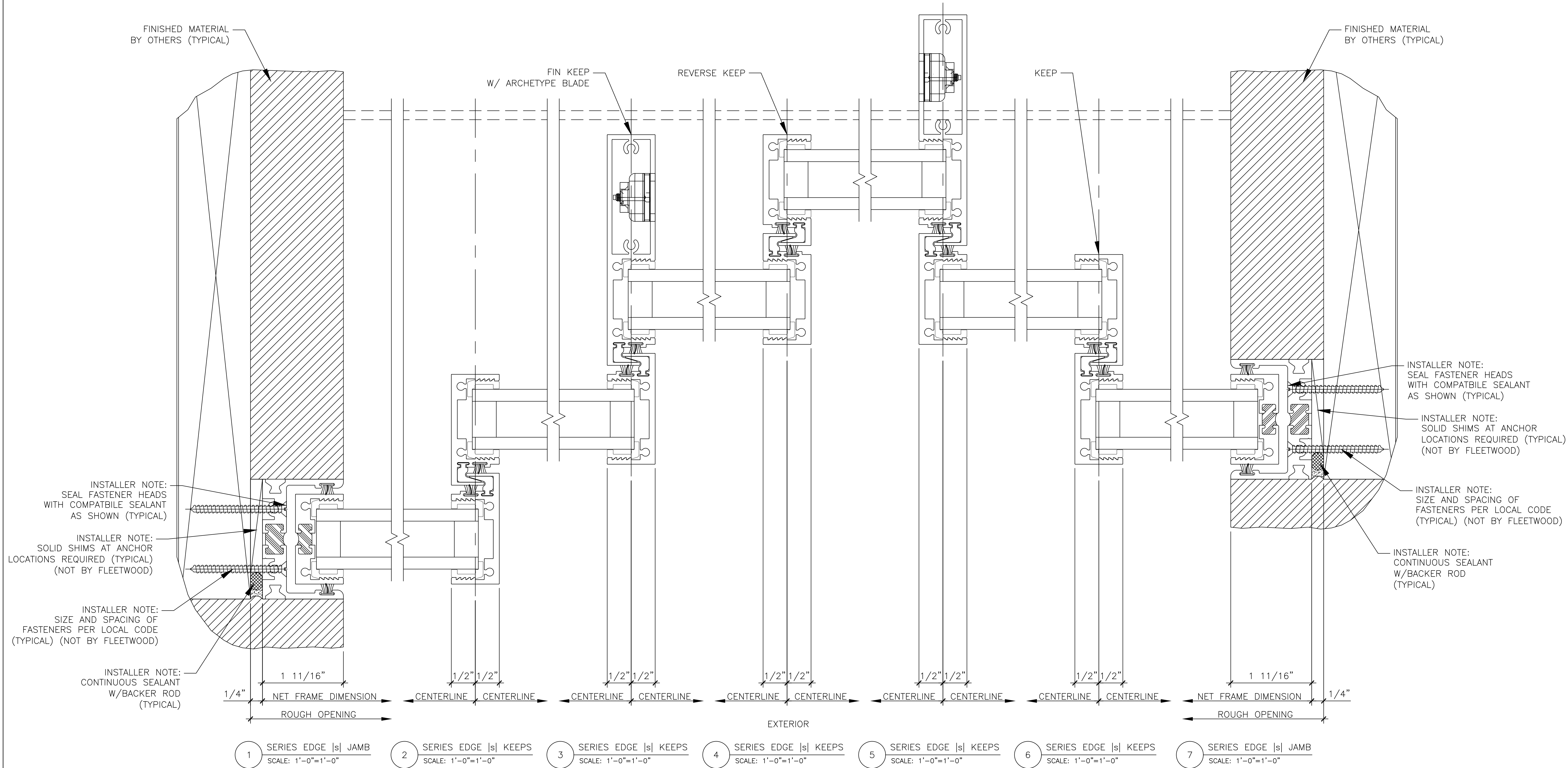


EXTERIOR

1 SERIES EDGE |s| HEAD
SCALE: 1'-0"=1'-0"



2 SERIES EDGE |s| SILL
SCALE: 1'-0"=1'-0"



COMMENTS		DRAWN BY		DATE		REVISIONS		DATE		JOB NUMBER	
PER MARKED UP DRAWINGS		N.T.		3/17/21		REV-1					

1 FLEETWOOD WAY
CORONA, CA 92879
www.fleetwoodusa.com

FLEETWOOD
W I N D O W S & D O O R S

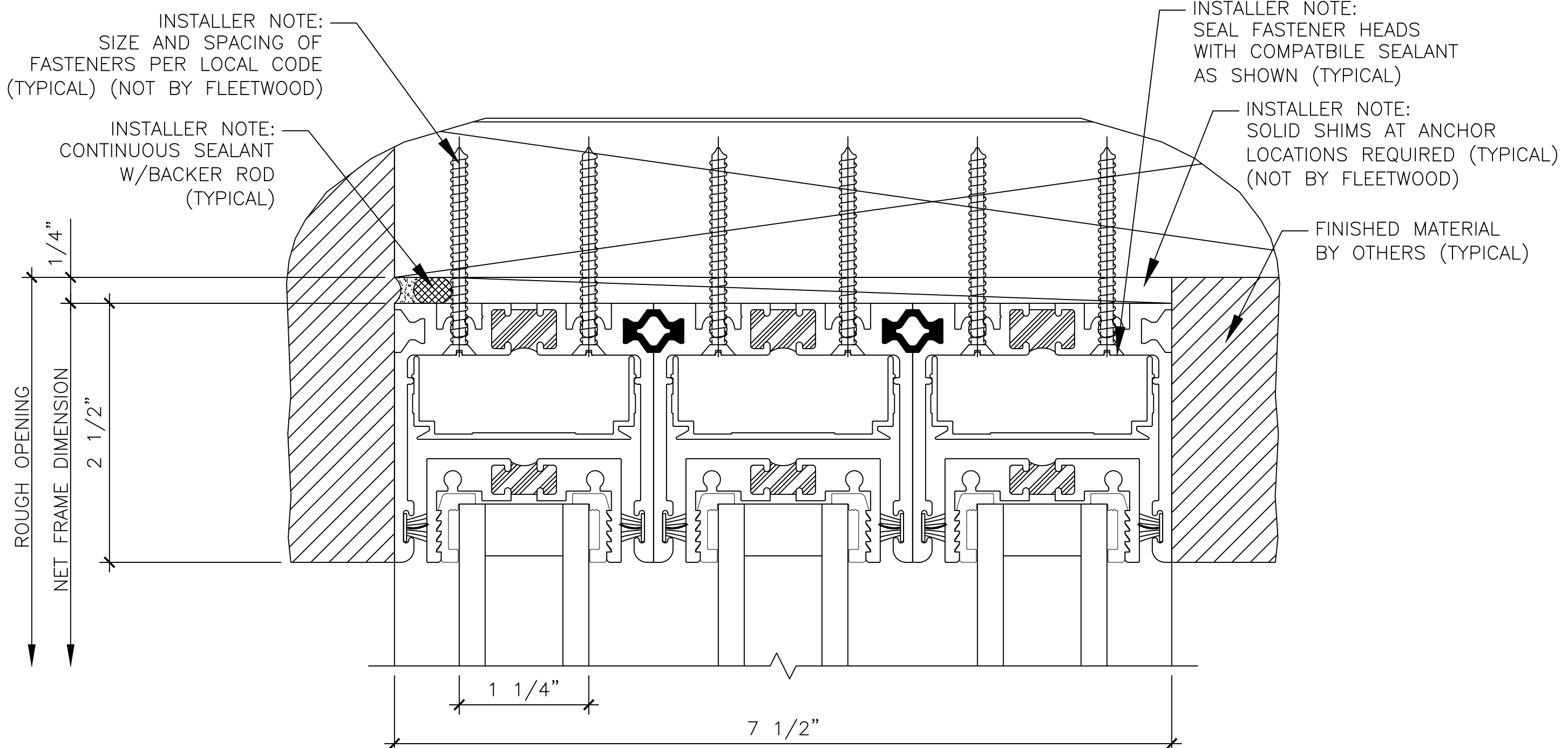
SCALE :
1' = 1'

DRAWING NO. :
2.05

SHEET :
6 OF 10

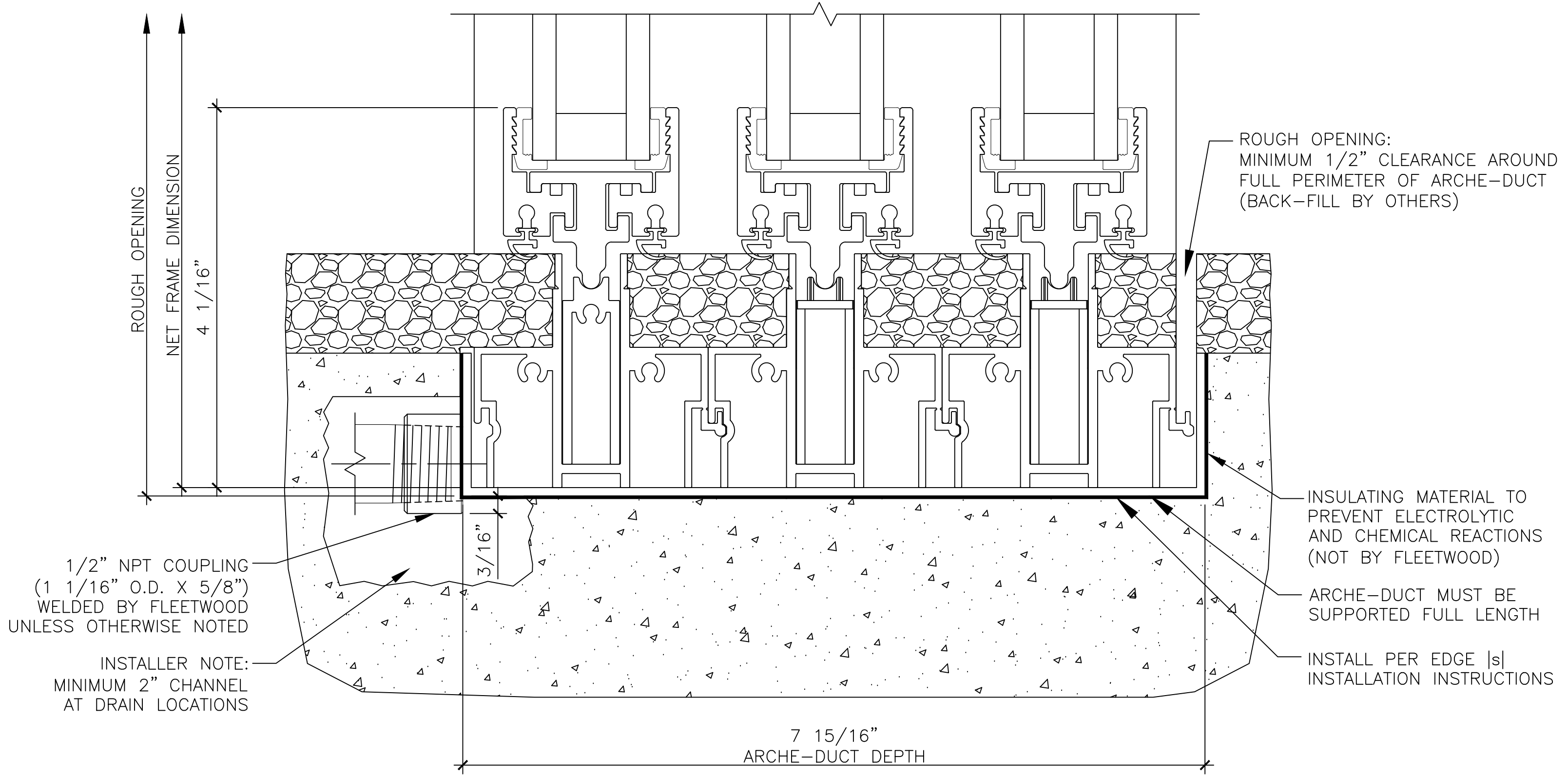
MATERIAL: SERIES EDGE |s|

CUSTOMER: JOB NAME:

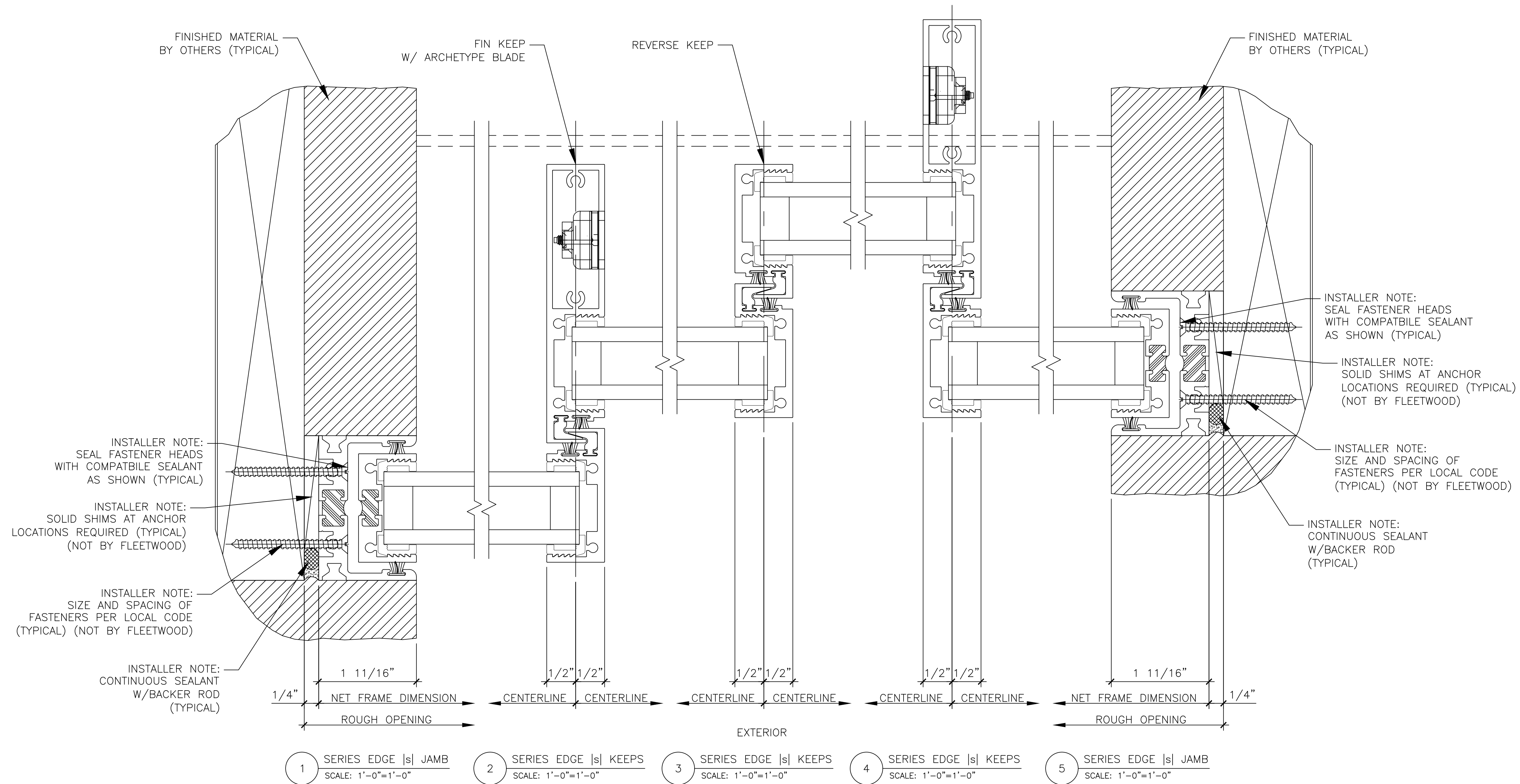


EXTERIOR

1 SERIES EDGE |s| HEAD
SCALE: 1'-0"=1'-0"



2 SERIES EDGE |s| SILL
SCALE: 1'-0"=1'-0"

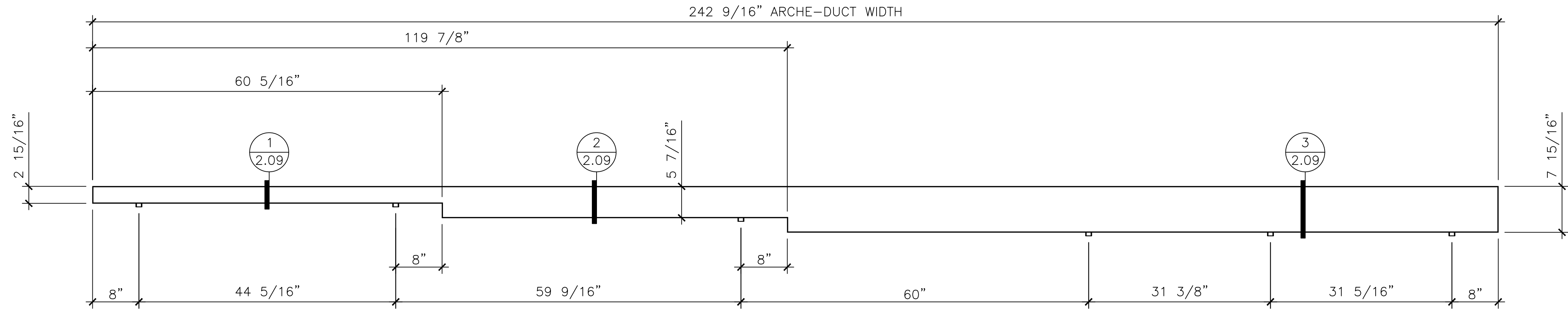


<div><div><div></div><div>FLEETWOOD</div><div>WINDOWS & DOORS</div></div><div>1 FLEETWOOD WAY CORONA, CA 92879 www.fleetwoodusa.com</div></div>						MATERIAL:		SERIES EDGE [S]		DATE:		REVISIONS		DATE		DRAWN BY		COMMENTS	
												REV-1		3/17/21		N.T.		PER MARKED UP DRAWINGS	
CUSTOMER:						JOB NUMBER:													
JOB NAME:																			
SCALE : 1' = 1'						DRAWING NO. : 2.07													
SHEET : 8 OF 10																			

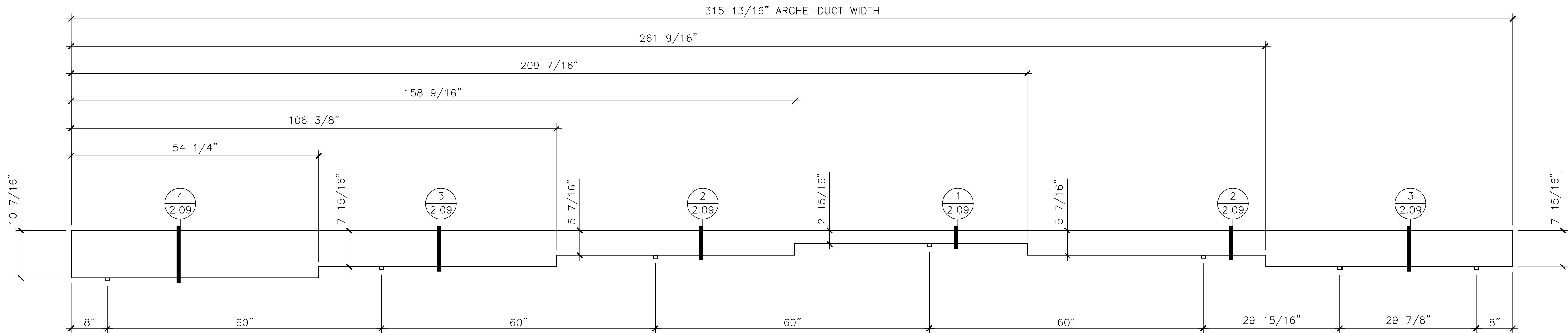
FABRICATION NOTES:
1. ALL DIMENSIONS ARE OUTSIDE DIMENSIONS UNLESS OTHERWISE NOTED.
2. DRAINS TO BE WELDED PER DIMENSIONS $\pm 1/8"$ BY FLEETWOOD.

INSTALLER NOTES:
1. INSTALLER TO INSTALL PER INSTALLATION INSTRUCTIONS.
2. ROUGH OPENING: MINIMUM $1/2"$ CLEARANCE AROUND FULL PERIMETER OF ARCHE-DUCT. (BACK-FILL BY OTHERS)
3. MINIMUM 2" CHANNEL AT DRAIN LOCATIONS.
4. MINIMUM $2-1/16"$ ROUGH OPENING DEPTH.
5. USE INSULATING MATERIAL TO PREVENT ELECTROLYTIC AND CHEMICAL REACTIONS. (NOT BY FLEETWOOD)
6. ARCHE-DUCT MUST BE SUPPORTED FULL LENGTH.

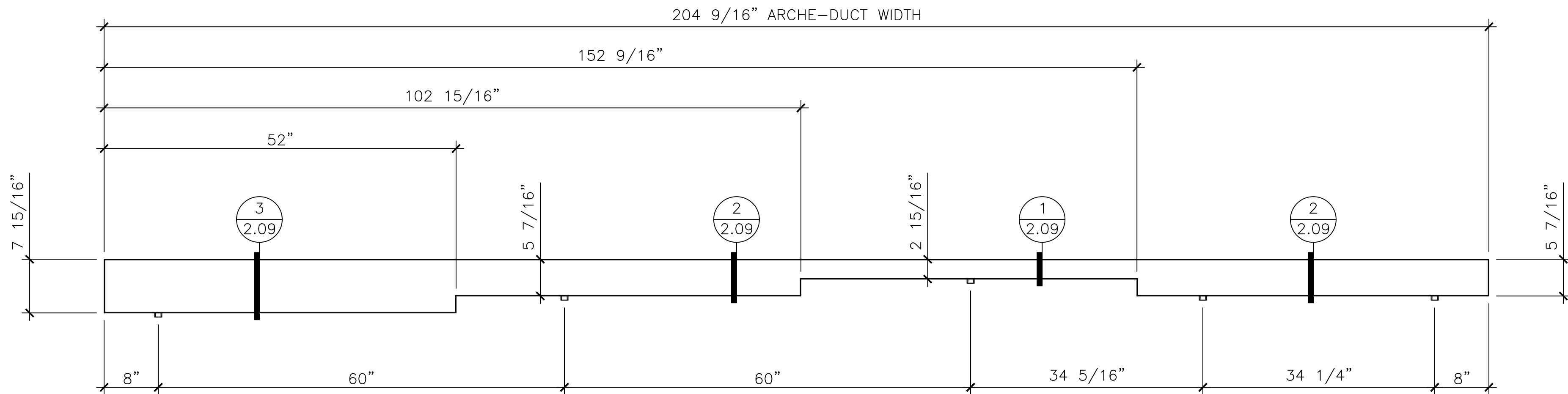
DEALER NOTES:
1. **◆**DRAIN SPACING: DEALER TO ENTER/CONFIRM ENTRY ON ORDER FRAME OPTIONS PRIOR TO ORDER SUBMITTAL.
2. DRAINS REQUIRE A MINIMUM DISTANCE FROM ENDS (8" TYPICAL).



1 SERIES EDGE |s| ARCHE-DUCT PLAN VIEW
SCALE: 1"=1'-0"

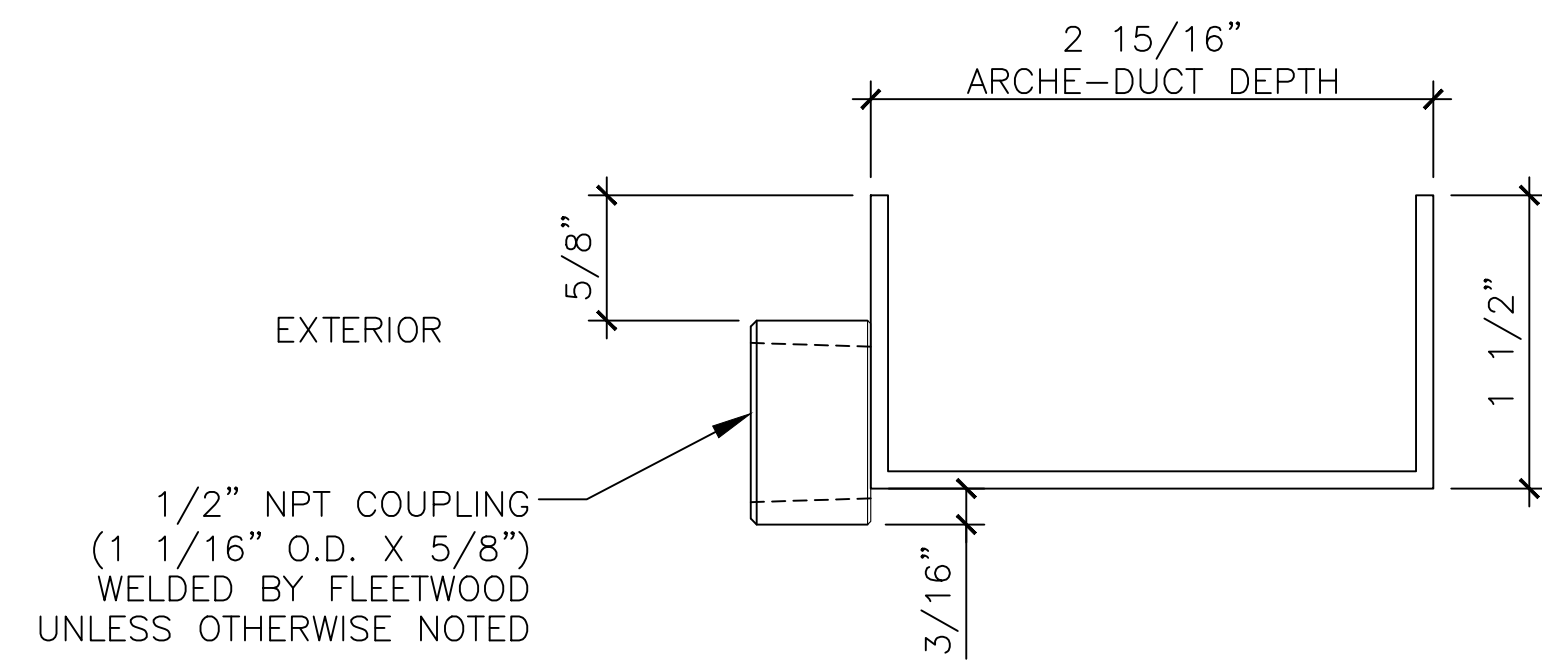


2 SERIES EDGE |s| ARCHE-DUCT PLAN VIEW
SCALE: 1"=1'-0"

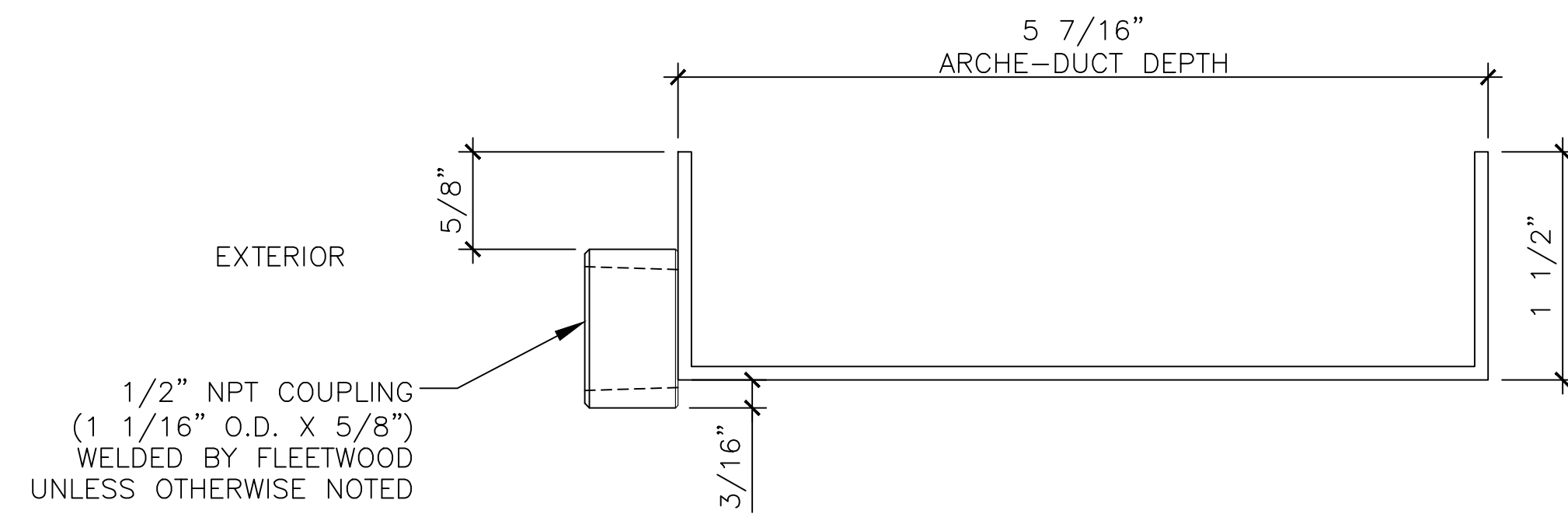


3 SERIES EDGE |s| ARCHE-DUCT PLAN VIEW
SCALE: 1"=1'-0"

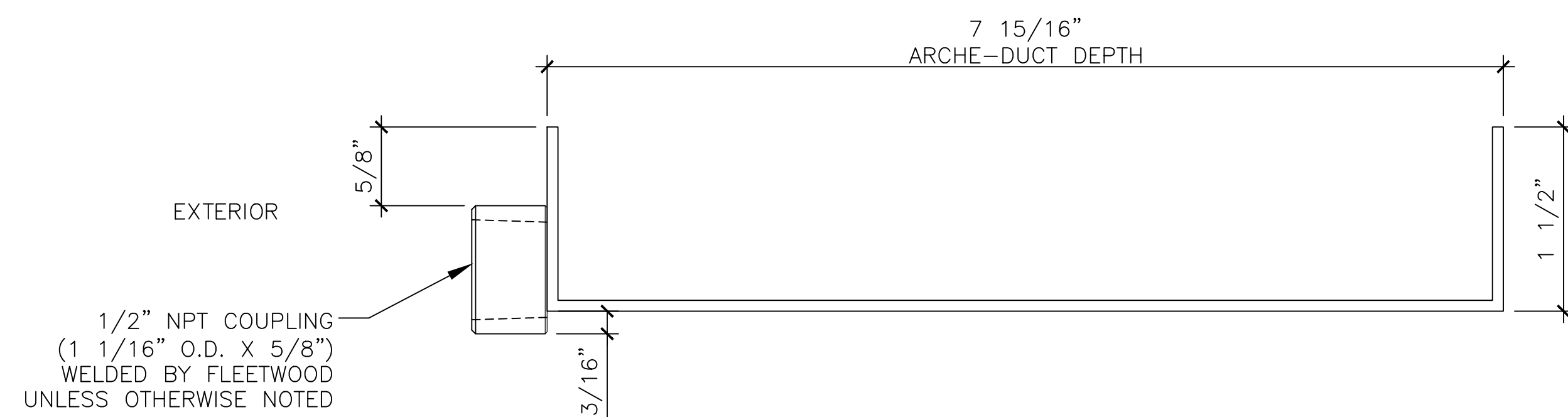
MATERIAL: SERIES EDGE s	REVISIONS	DATE	DRAWN BY	COMMENTS
	REV-1	3/17/21	N.T.	PER MARKED UP DRAWINGS
CUSTOMER: JOB NAME:	DATE:		JOB NUMBER:	
	DRAWN BY:			
1 FLEETWOOD WAY CORONA, CA 92879 www.fleetwoodusa.com				
FLEETWOOD WINDOWS & DOORS				
SCALE : 1" = 1'				
DRAWING NO. : 2.08				
SHEET : 9 OF 10				



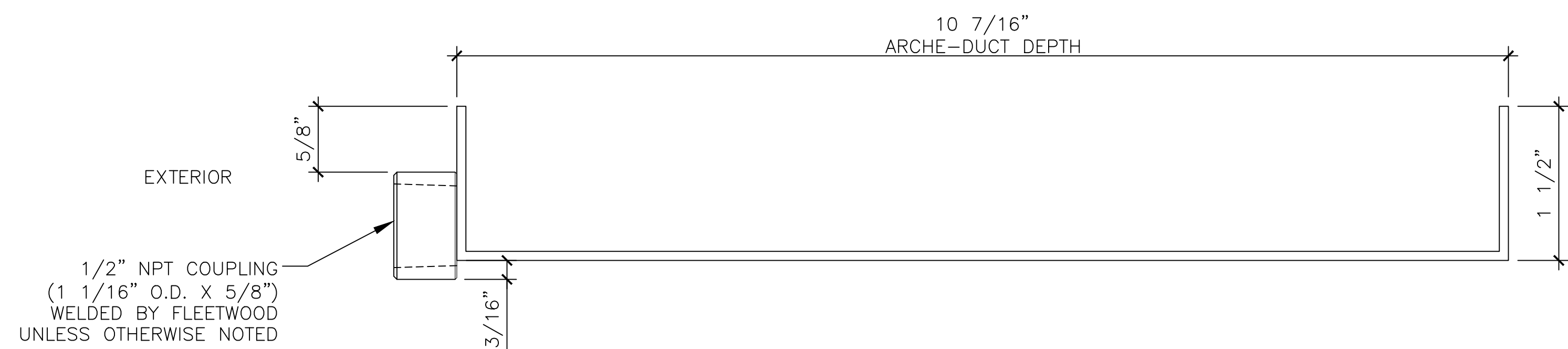
1 SERIES EDGE |S| ARCHE-DUCT SECTION VIEW
SCALE: 1'-0"=1'-0"



2 SERIES EDGE |S| ARCHE-DUCT SECTION VIEW
SCALE: 1'-0"=1'-0"



3 SERIES EDGE |S| ARCHE-DUCT SECTION VIEW
SCALE: 1'-0"=1'-0"



4 SERIES EDGE |S| ARCHE-DUCT SECTION VIEW
SCALE: 1'-0"=1'-0"

[illegible]