

Testing Evaluation Laboratories, Inc.

2002 Wood Court Suite 1 – Plant City, FL 33563
Phone: 813-754-9887

TAS 202-94, TAS 201-94 and TAS 203-94
TEST RESULTS

IAS Lab Accreditation Number: TL-299

Report No: TEL 01993414
Test Dates: November 2-8, 2021
Report Date: December 14, 2021

Issued to:

**Fleetwood Windows and Doors
One Fleetwood Way
Corona, CA 92879**

Project Summary: Testing Evaluation Laboratories, Inc. (TEL) was contracted by Fleetwood Windows and Doors to perform tests on the 4400-T Pivot Door at TEL's Plant City, FL test facility.

Test specimen descriptions and results are reported herein.

Test Specifications: The test specimens were evaluated in accordance with the following:

High Velocity Hurricane Zone Protocols TAS 202-94, TAS 201-94 and TAS 203-94

Test Specimen Description:

Series / Model: 4400-T Pivot Door

Type: Aluminum Pivot Door - X

Overall Size: 96.00" x 144.00" – Specimen 1
72.00" x 120.00" – Specimens 5, 5a, 5b, 5c, 6, 6a

Daylight Opening: 85.75" x 133.125" – Specimen 1
61.75" x 109.125" – Specimens 5, 5a, 5b, 5c, 6, 6a

Glazing Detail: (See attached drawing #L-9491, #L-9495 and #L-9496 for details)

Frame Material: Aluminum

Finish: Mill Finish

For Tested Elevation, Vertical Cross Sections, Horizontal Cross Sections, Components, Frame Anchoring, Glazing Detail and Bill of Materials See Attached Drawing #'s L-9491, L-9495 and 9496.

STRUCTURAL TESTS (TAS 202)

Specimen 1 – 96.0" x 140.0" Aluminum Pivot Door (X)

Air Infiltration (ASTM E283-04)	Pressure 1.57 PSF	SCFM/Ft ² 0.289	Result Pass
Water Infiltration (ASTM E331-00)	Pressure 3.00 PSF	Time 15.0 Min.	Result Pass

STRUCTURAL TESTS (TAS 202)

Specimen 5 – 72.0” x 120.0” Aluminum Pivot Door (X)

Design Pressure Positive 60.0 Negative 65.0

Air Infiltration (ASTM E283-04)

See Specimen 1 for these results.

Note: 75 MPH Load applied with primary lock engaged only.

Structural Loads (ASTM E330-02)

Range	Time (sec)	Load (psf)
Half Test Positive	30	30.00
Design Positive	30	60.00
Half Test Negative	30	32.50
Design Negative	30	65.00

Water Infiltration (ASTM E331-00)

See Specimen 1 for these results.

Note #1: Water Infiltration performed after Positive and Negative half and design loads.

Structural Loads (ASTM E330-02)

Range	Time (sec)	Load (psf)	Location	Deflection	Set	Allowable (Set)
Half Proof Positive	10	45.00				
Test Positive	30	90.00	1	0.084"	0.004"	0.240"
Half Proof Negative	10	48.75				
Test Negative	30	97.50	1	0.019"	0.002"	0.240"

Deflection Locations:

Deflection/Set for Location 1 measured at center between deadbolt and flip bolt at latch stile.

Forced Entry 300 lbs in direction to open - Passed

Conclusion: TEL observed no signs of failure in any area of this test specimen during the Uniform Static Load Test. In addition, specimen met the permanent set requirements. Therefore, this specimen satisfies the uniform static load test requirements of TAS 202-94.

Christian Seifried, Test Technician

STRUCTURAL TESTS (TAS 202)

Specimen 6 – 72.0” x 120.0” Aluminum Pivot Door (X)

Design Pressure Positive 55.0 Negative 55.0

Air Infiltration (ASTM E283-04)

See Specimen 1 for these results.

Note: 75 MPH Load applied with primary lock engaged only.

Structural Loads (ASTM E330-02)

Range	Time (sec)	Load (psf)
Half Test Positive	30	27.50
Design Positive	30	55.00
Half Test Negative	30	27.50
Design Negative	30	55.00

Water Infiltration (ASTM E331-00)

See Specimen 1 for these results.

Note #1: Water Infiltration performed after Positive and Negative half and design loads.

Structural Loads (ASTM E330-02)

Range	Time (sec)	Load (psf)	Location	Deflection	Set	Allowable (Set)
Half Proof Positive	10	41.25				
Test Positive	30	82.50	1	0.254"	0.022"	0.240"
Half Proof Negative	10	41.25				
Test Negative	30	82.50	1	0.323"	0.008"	0.240"

Deflection Locations:

Deflection/Set for Location 1 measured at center between pivot and corner of door at bottom rail.

Forced Entry 300 lbs in direction to open - Passed

Conclusion: TEL observed no signs of failure in any area of this test specimen during the Uniform Static Load Test. In addition, specimen met the permanent set requirements. Therefore, this specimen satisfies the uniform static load test requirements of TAS 202-94.

Christian Seifried, Test Technician

IMPACT AND CYCLING TESTS (TAS 201/203)

Specimen 5a – 72.0” x 120.0” Aluminum Pivot Door (X)

TAS 201 and 203 – Large Missile Impact (2 x 4 Southern Yellow Pine)

Cond. Temp Of Specimen	Missile Level	Missile Weight	Missile Length	Muzzle Distance From Specimen
75°F	D	8.0 lbs, 14 oz	7'-10"	17'2"

Impact Location	Results	X - Measurement	Y - Measurement	Speed
1	Pass	35.00"	58.00"	50.1 fps
2	Pass	60.00"	12.50"	49.7 fps
Orientation of Missile at Impact was within +/-5° of horizontal. None of the impacts penetrated the specimens. "X" measurement is from the left edge of test specimen. "Y" measurement is from the bottom edge of test specimen.				

TAS 201 and 203– Fatigue Load Cycling Design Pressure +60.0 psf / -65.0 psf

Positive % of Test Load	Positive Pressure Range (psf)	Number Of Cycles	Average Cycle Time (Sec)
20% to 50%	12.0 to 30.0	3500	1.34
0% to 60%	0.0 to 36.0	300	2.51
50% to 80%	30.0 to 48.0	600	1.45
30% to 100%*	18.0 to 60.0	100	2.38

Negative % of Test Load	Negative Pressure Range (psf)	Number Of Cycles	Average Cycle Time (Sec)
30% to 100%*	19.5 to 65.0	50	2.09
50% to 80%	32.5 to 52.0	1050	1.30
0% to 60%	0.0 to 39.0	50	1.71
20% to 50%	13.0 to 32.5	3350	2.00

*Panel deflected 3.63” from original plane at 100% Positive load and 4.25” from original plane at 100% Negative load. At the completion of cycles the door panel was operable. There were no tears in the film. In our opinion, the tape and film used to seal for air leakage did not influence the results of the test.

Christian Seifried, Test Technician

Mfg Observers – None

IMPACT AND CYCLING TESTS (TAS 201/203)

Specimen 5b – 72.0” x 120.0” Aluminum Pivot Door (X)

TAS 201 and 203 – Large Missile Impact (2 x 4 Southern Yellow Pine)

Cond. Temp Of Specimen	Missile Level	Missile Weight	Missile Length	Muzzle Distance From Specimen
75°F	D	8.0 lbs, 14 oz	7'-10"	17'2"

Impact Location	Results	X - Measurement	Y - Measurement	Speed
1	Pass	36.00"	60.00"	50.0 fps
2	Pass	59.50"	12.00"	49.4 fps
Orientation of Missile at Impact was within +/-5° of horizontal. None of the impacts penetrated the specimens. "X" measurement is from the left edge of test specimen. "Y" measurement is from the bottom edge of test specimen.				

TAS 201 and 203– Fatigue Load Cycling Design Pressure +60.0 psf / -65.0 psf

Positive % of Test Load	Positive Pressure Range (psf)	Number Of Cycles	Average Cycle Time (Sec)
20% to 50%	12.0 to 30.0	3500	1.60
0% to 60%	0.0 to 36.0	300	1.79
50% to 80%	30.0 to 48.0	600	1.23
30% to 100%*	18.0 to 60.0	100	1.41

Negative % of Test Load	Negative Pressure Range (psf)	Number Of Cycles	Average Cycle Time (Sec)
30% to 100%*	19.5 to 65.0	50	2.46
50% to 80%	32.5 to 52.0	1050	1.20
0% to 60%	0.0 to 39.0	50	2.88
20% to 50%	13.0 to 32.5	3350	1.34

*Panel deflected 3.88” from original plane at 100% Positive load and 3.50” from original plane at 100% Negative load. At the completion of cycles the door panel was operable. There were no tears in the film. In our opinion, the tape and film used to seal for air leakage did not influence the results of the test.

Christian Seifried, Test Technician

Mfg Observers – None

IMPACT AND CYCLING TESTS (TAS 201/203)

Specimen 5c – 72.0” x 120.0” Aluminum Pivot Door (X)

TAS 201 and 203 – Large Missile Impact (2 x 4 Southern Yellow Pine)

Cond. Temp Of Specimen	Missile Level	Missile Weight	Missile Length	Muzzle Distance From Specimen
75°F	D	8.0 lbs, 14 oz	7'-10"	17'2"

Impact Location	Results	X - Measurement	Y - Measurement	Speed
1	Pass	36.00"	60.00"	50.1 fps
2	Pass	12.00"	108.00"	49.9 fps
Orientation of Missile at Impact was within +/-5° of horizontal. None of the impacts penetrated the specimens. "X" measurement is from the left edge of test specimen. "Y" measurement is from the bottom edge of test specimen.				

TAS 201 and 203– Fatigue Load Cycling Design Pressure +60.0 psf / -65.0 psf

Positive % of Test Load	Positive Pressure Range (psf)	Number Of Cycles	Average Cycle Time (Sec)
20% to 50%	12.0 to 30.0	3500	1.38
0% to 60%	0.0 to 36.0	300	2.30
50% to 80%	30.0 to 48.0	600	1.37
30% to 100%*	18.0 to 60.0	100	1.52

Negative % of Test Load	Negative Pressure Range (psf)	Number Of Cycles	Average Cycle Time (Sec)
30% to 100%*	19.5 to 65.0	50	2.29
50% to 80%	32.5 to 52.0	1050	1.16
0% to 60%	0.0 to 39.0	50	2.95
20% to 50%	13.0 to 32.5	3350	1.50

*Panel deflected 3.50” from original plane at 100% Positive load and 4.13” from original plane at 100% Negative load. At the completion of cycles the door panel was operable. There were no tears in the film. In our opinion, the tape and film used to seal for air leakage did not influence the results of the test.

Christian Seifried, Test Technician

Mfg Observers – None

IMPACT AND CYCLING TESTS (TAS 201/203)

Specimen 6a – 72.0" x 120.0" Aluminum Pivot Door (X)

TAS 201 and 203 – Large Missile Impact (2 x 4 Southern Yellow Pine)

Cond. Temp Of Specimen	Missile Level	Missile Weight	Missile Length	Muzzle Distance From Specimen
75°F	D	8.0 lbs, 14 oz	7'-10"	17'2"

Impact Location	Results	X - Measurement	Y - Measurement	Speed
1	Pass	36.25"	61.00"	49.8 fps
2	Pass	60.50"	11.75"	50.0 fps
Orientation of Missile at Impact was within +/-5° of horizontal. None of the impacts penetrated the specimens. "X" measurement is from the left edge of test specimen. "Y" measurement is from the bottom edge of test specimen.				

TAS 201 and 203– Fatigue Load Cycling Design Pressure +60.0 psf / -65.0 psf

Positive % of Test Load	Positive Pressure Range (psf)	Number Of Cycles	Average Cycle Time (Sec)
20% to 50%	12.0 to 30.0	3500	1.45
0% to 60%	0.0 to 36.0	300	2.45
50% to 80%	30.0 to 48.0	600	1.61
30% to 100%*	18.0 to 60.0	100	1.85

Negative % of Test Load	Negative Pressure Range (psf)	Number Of Cycles	Average Cycle Time (Sec)
30% to 100%*	19.5 to 65.0	50	2.00
50% to 80%	32.5 to 52.0	1050	1.15
0% to 60%	0.0 to 39.0	50	2.25
20% to 50%	13.0 to 32.5	3350	1.32

*Panel deflected 3.88" from original plane at 100% Positive load and 4.75" from original plane at 100% Negative load. At the completion of cycles the door panel was operable. There were no tears in the film. In our opinion, the tape and film used to seal for air leakage did not influence the results of the test.

Christian Seifried, Test Technician

Mfg Observers – None

General Note:

Tape and film were used to seal against air leakage during structural testing and fatigue loading and cycling. In our opinion, the tape and film did not influence the results of the tests.

Drawing Reference:

The test specimen drawings have been reviewed by TEL and are representative of the test specimens reported herein.

Conditions, Terms, and General Notes Regarding These Tests

The product tested Has Been compared to the detailed drawing, bill of materials and fabrication information supplied by the client so named herein. Our analysis, which includes dimensional and component description comparisons, indicate the tested product and engineering information supplied by the client "Are Equivalent".

The report and representative samples will be retained for four years from the date of initial test.

These test results were obtained by employing all requirements of the designated test methods with no Deviations unless explicitly noted in test report. The test results and specimen supplied for testing are in compliance with the reference.

The test results are specific to the product tested by this laboratory and of the sample supplied by the client named herein, and they relate to no other product either manufactured by the client, a fabricator of the client or of installed field performance.

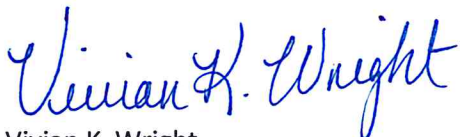
This test report does not constitute certification of this product, but only that the above test results were obtained using the designated test methods and they indicate compliance with the performance requirements (paragraphs as listed) of the above referenced specifications.

Testing Evaluation Laboratories, Inc. makes no opinions or endorsements regarding this product and its performance. This report may not be reproduced or quoted in partial form without the expressed written approval of Testing Evaluation Laboratories, Inc.

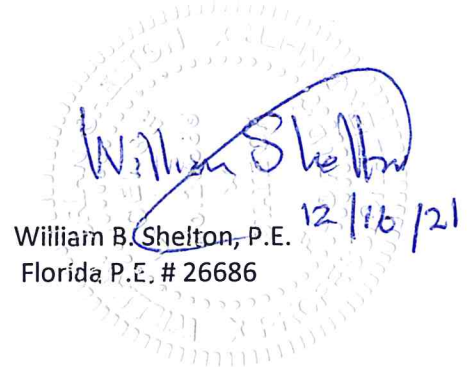
Testing Evaluation Laboratories, Inc.'s letter, reports, its name or insignia or mark are for the exclusive use of the client so named herein and any other use is strictly prohibited. The report, letters and the name of Testing Evaluation Laboratories, Inc., its seal or mark shall not be used in any circumstance to the general public or in any advertising.

Limitation of liability: Due diligence was used in performing the tests and reporting the results. By acceptance of this report, this client agrees to hold harmless and indemnify Testing Evaluation Laboratories, Inc., its employees, sub-contractors and officers and owners against all claims and demands of any kind whatsoever, which arise out of or in any manner connected with the performance of work referred to herein.

Testing Evaluation Laboratories, Inc.



Vivian K. Wright,
President




William B. Shelton, P.E. 12/16/21
Florida P.E. # 26686

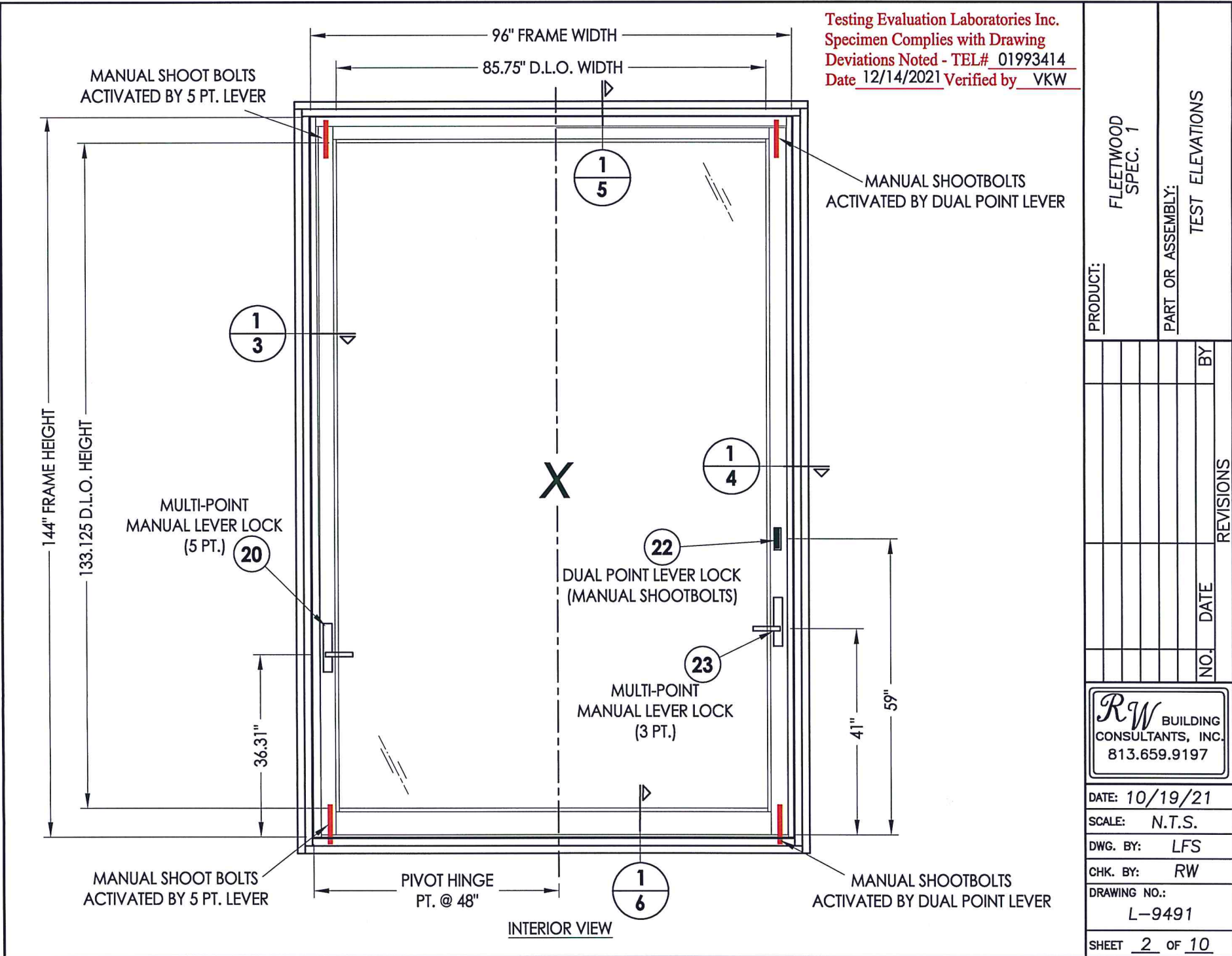
Revision Log

Rev No.	Date	Page(s)	Revision(s)
0	12/14/2021	NA	Original Report Issue

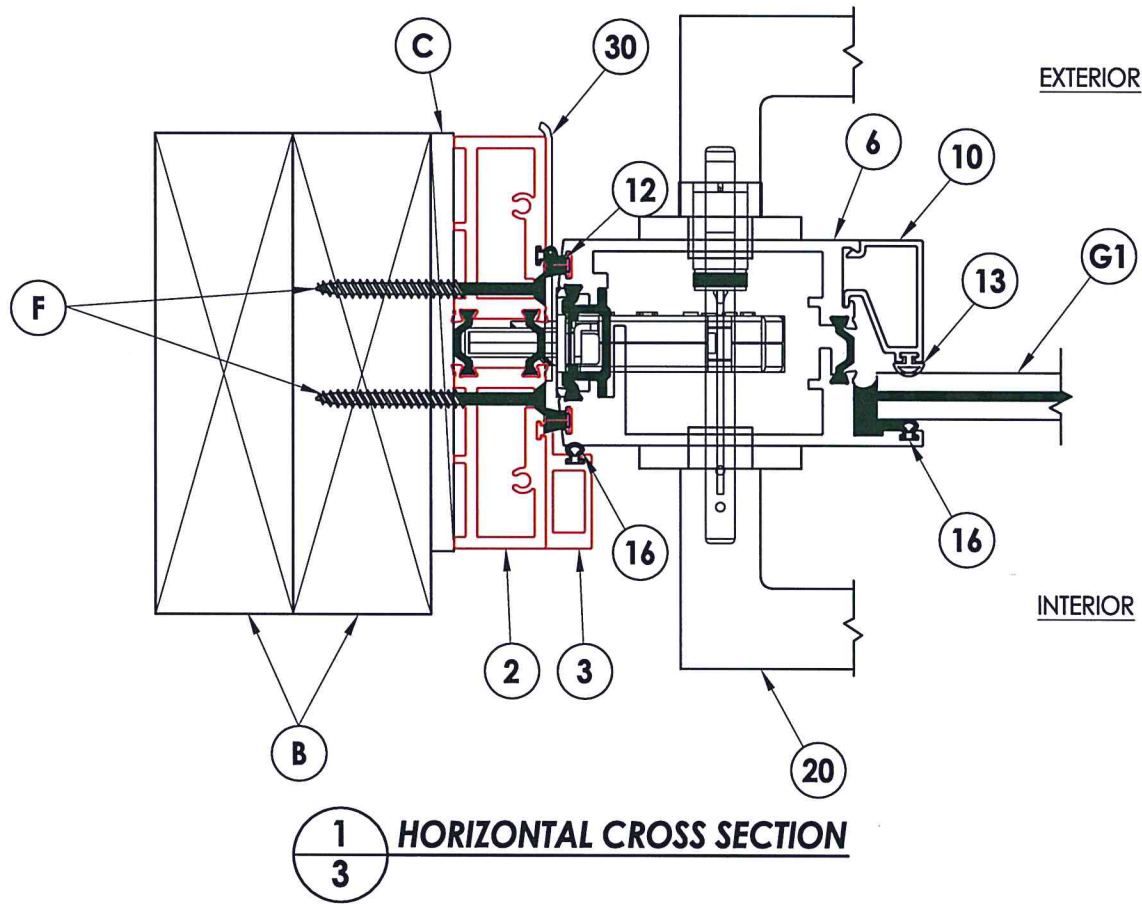
TABLE OF CONTENTS	
SHEET #	DESCRIPTION
1	Table of Contents
2	Test Elevation
3	Horizontal Cross Section
4	Horizontal Cross Section
5	Vertical Cross Section
6	Vertical Cross Section
7	Frame Anchoring
8	Glazing Details
9	Components
10	Bill of Materials

Testing Evaluation Laboratories Inc.
 Specimen Complies with Drawing
 Deviations Noted - TEL# 01993414
 Date 12/14/2021 Verified by VKW

PRODUCT: FLEETWOOD SPEC. 1	
PART OR ASSEMBLY: TABLE OF CONTENTS	
NO. DATE REVISIONS	
	BY
	
DATE: 10/19/21	
SCALE: N.T.S.	
DWG. BY: LFS	
CHK. BY: RW	
DRAWING NO.: L-9491	
SHEET <u>1</u> OF <u>10</u>	

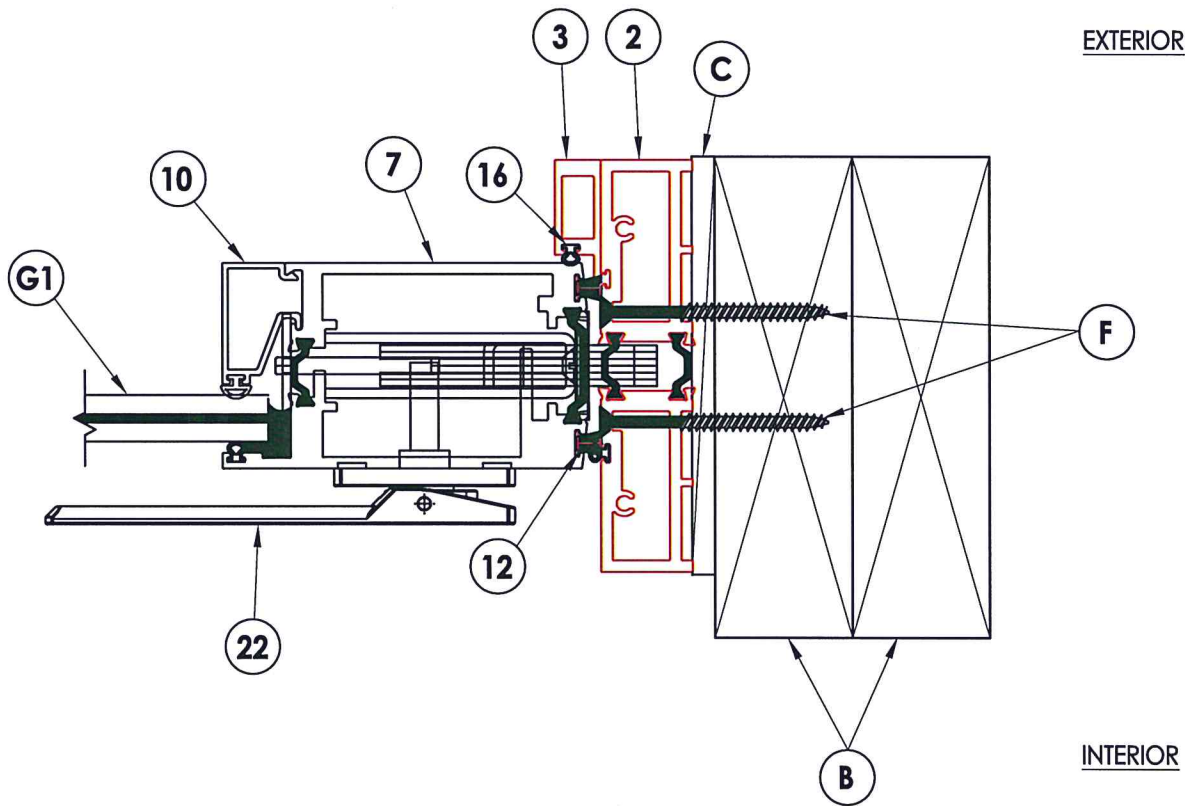


PRODUCT:		FLEETWOOD SPEC. 1	
PART OR ASSEMBLY:		TEST ELEVATIONS	
		NO.	DATE
DATE: 10/19/21			
SCALE: N.T.S.			
DWG. BY: LFS			
CHK. BY: RW			
DRAWING NO.: L-9491			
SHEET 2 of 10			



PRODUCT:		FLEETWOOD SPEC. 1	
PART OR ASSEMBLY:		CROSS SECTION	
NO.	DATE	REVISIONS	BY
 RW BUILDING CONSULTANTS, INC. 813.659.9197			
DATE: 10/19/21			
SCALE: N.T.S.			
DWG. BY: LFS			
CHK. BY: RW			
DRAWING NO.:			
L-9491			
SHEET 3 OF 10			


Testing Evaluation Laboratories Inc.
Specimen Complies with Drawing
Deviations Noted - TEL# 01993414
Date 12/14/2021 Verified by VKW



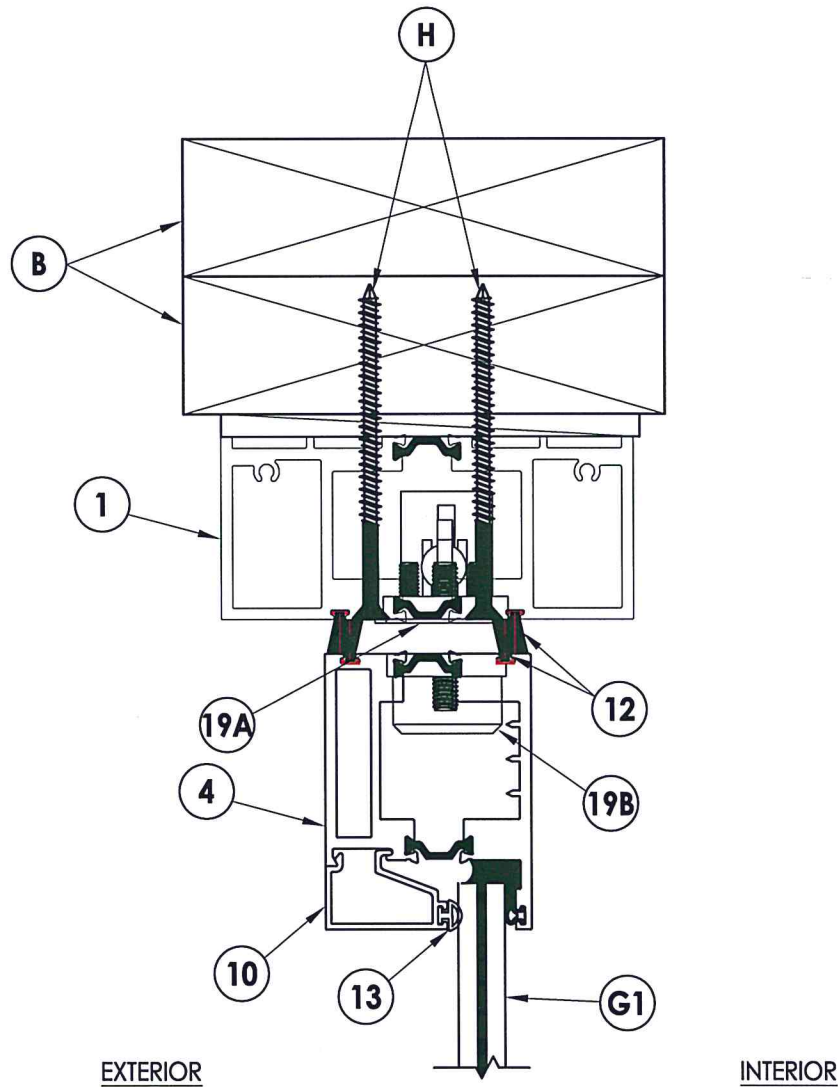
1 HORIZONTAL CROSS SECTION
4

EXTERIOR

INTERIOR

PRODUCT: FLEETWOOD SPEC. 1		PART OR ASSEMBLY: CROSS SECTION	
NO.	DATE	REVISIONS	BY
			
DATE: 10/19/21			
SCALE: N.T.S.			
DWG. BY: LFS			
CHK. BY: RW			
DRAWING NO.: L-9491			
SHEET 4 OF 10			

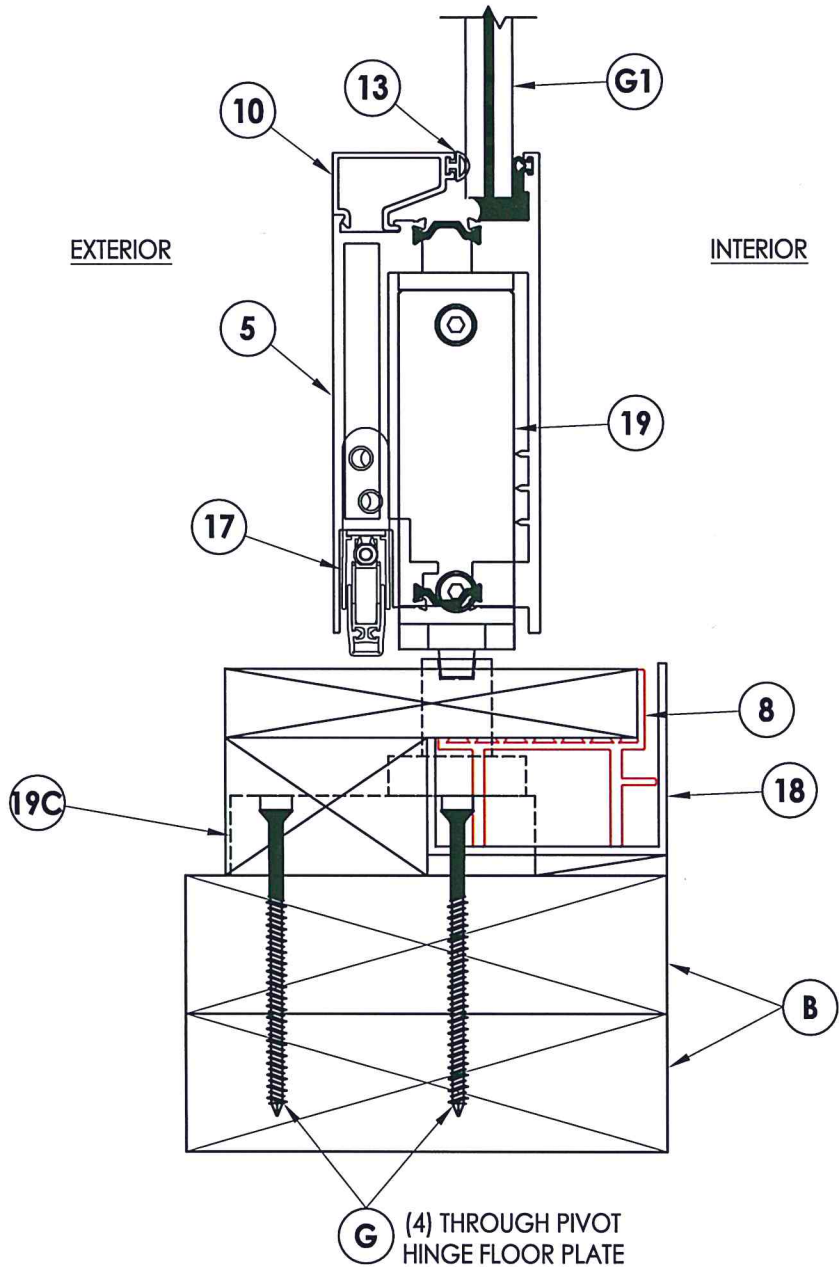
Testing Evaluation Laboratories Inc.
Specimen Complies with Drawing
Deviations Noted - TEL# 01993414
Date 12/14/2021 Verified by VKW



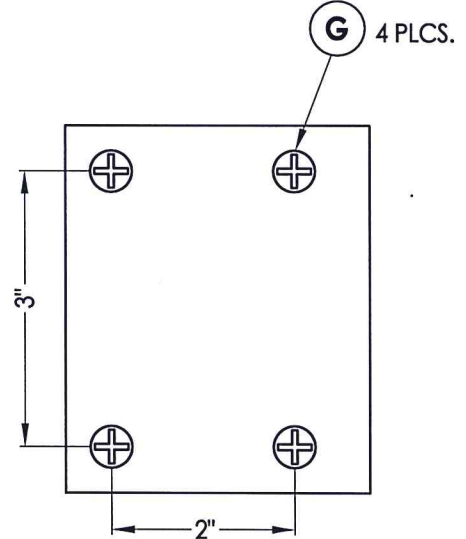
1 VERTICAL CROSS SECTION
5

Testing Evaluation Laboratories Inc.
 Specimen Complies with Drawing
 Deviations Noted - TEL# 01993414
 Date 12/14/2021 Verified by VKW

PRODUCT: FLEETWOOD SPEC. 1		PART OR ASSEMBLY: CROSS SECTION	
NO.	DATE	BY	REVISIONS
 RW BUILDING CONSULTANTS, INC. 813.659.9197			
DATE: 10/19/21			
SCALE: N.T.S.			
DWG. BY: LFS			
CHK. BY: RW			
DRAWING NO.: L-9491			
SHEET 5 OF 10			



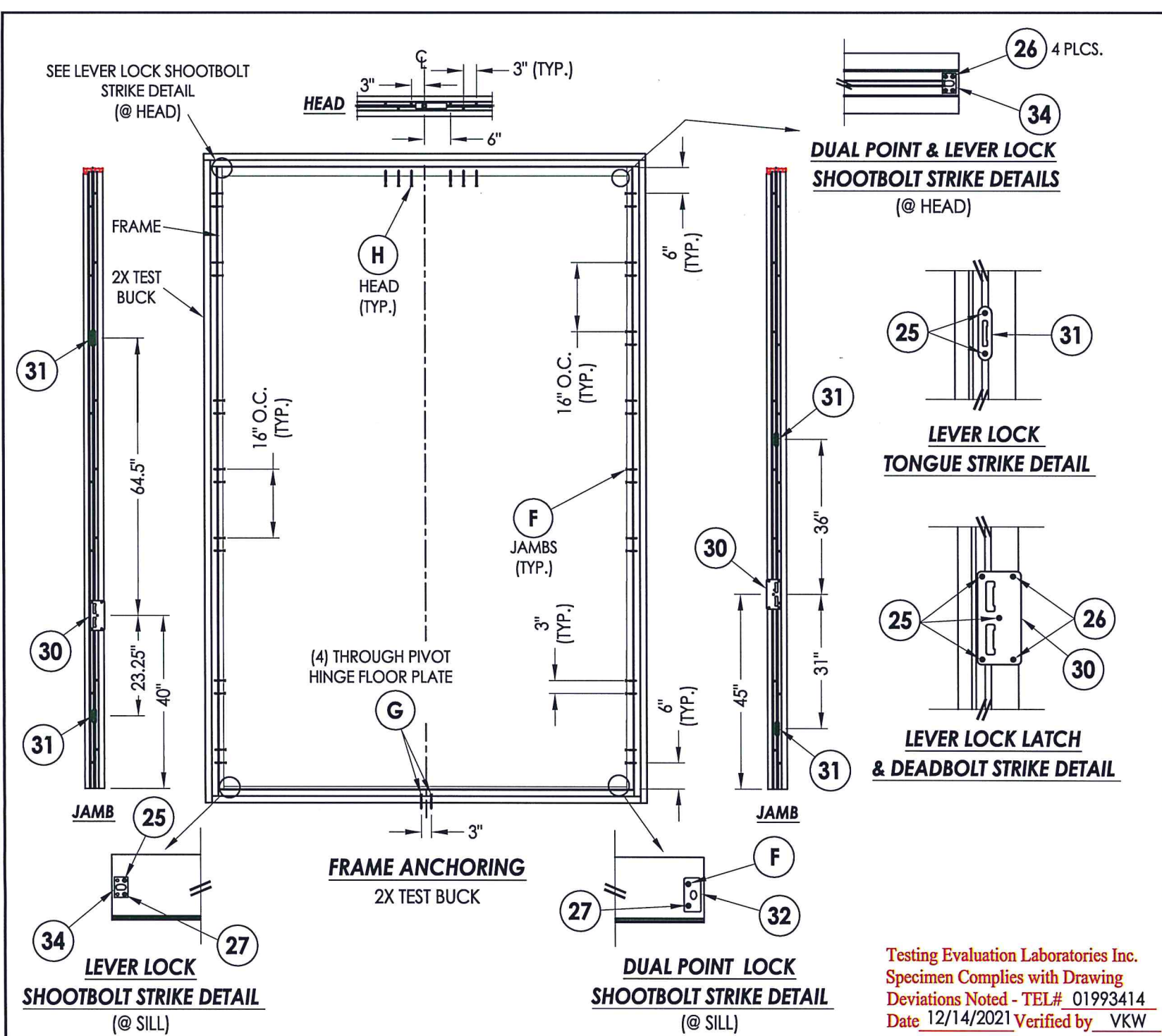
1
6 **VERTICAL CROSS SECTION**



PIVOT HINGE FLOOR PLATE PLAN VIEW

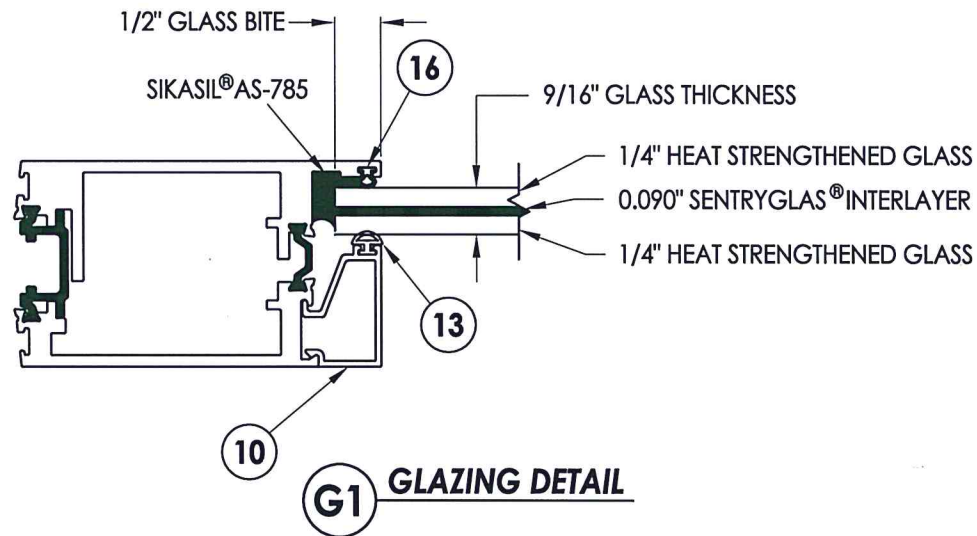
Testing Evaluation Laboratories Inc.
Specimen Complies with Drawing
Deviations Noted - TEL# 01993414
Date 12/14/2021 Verified by VKW

PRODUCT: FLEETWOOD SPEC. 1		PART OR ASSEMBLY: CROSS SECTION	
NO.	DATE	REVISIONS	BY
DATE: 10/19/21			
SCALE: N.T.S.			
DWG. BY: LFS			
CHK. BY: RW			
DRAWING NO.: L-9491			
SHEET 6 of 10			



PRODUCT: FLEETWOOD SPEC. 1		PART OR ASSEMBLY: FRAME ANCHORING	
NO.	DATE	REVISIONS	BY
 RW BUILDING CONSULTANTS, INC. 813.659.9197			
DATE: 11/04/21			
SCALE: N.T.S.			
DWG. BY: LFS			
CHK. BY: RW			
DRAWING NO.: L-9495			
SHEET 7 of 10			

Testing Evaluation Laboratories Inc.
 Specimen Complies with Drawing
 Deviations Noted - TEL# 01993414
 Date 12/14/2021 Verified by VKW



PRODUCT: FLEETWOOD SPEC. 1

PART OR ASSEMBLY: GLAZING DETAILS

NO.	DATE	REVISIONS	BY

RW BUILDING CONSULTANTS, INC.
813.659.9197

DATE: 10/19/21

SCALE: N.T.S.

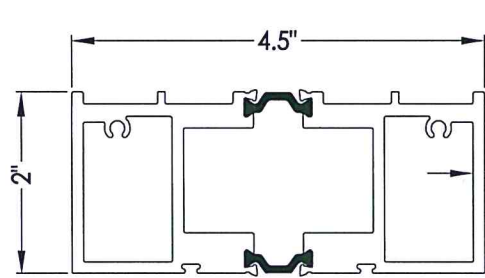
DWG. BY: LFS

CHK. BY: RW

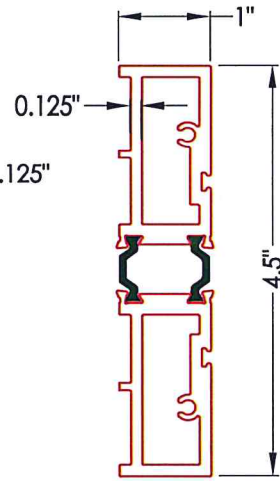
DRAWING NO.: L-9491

SHEET 8 OF 10

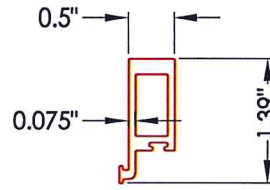
Testing Evaluation Laboratories Inc.
Specimen Complies with Drawing
Deviations Noted - TEL# 01993414
Date 12/14/2021 Verified by VKW



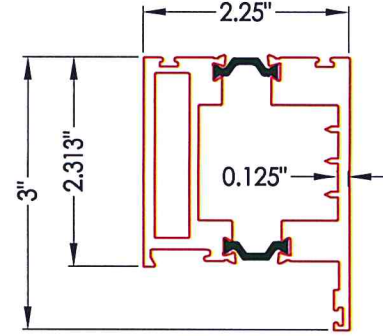
1 HEAD



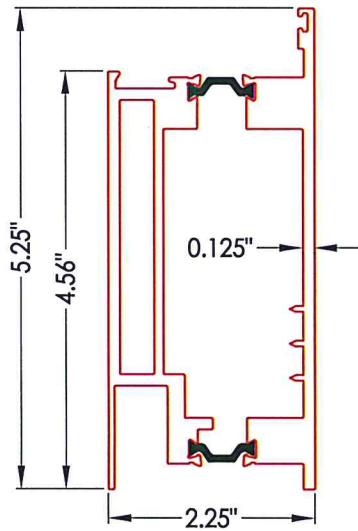
2 JAMB



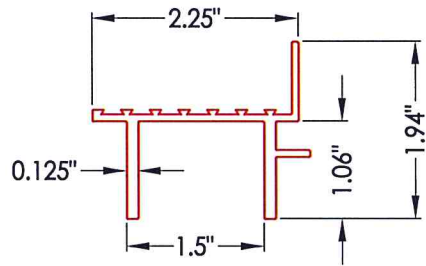
3 PANEL STOP



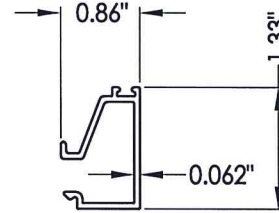
4 TOP RAIL



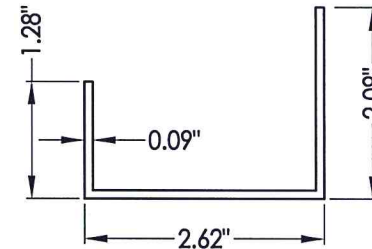
5 BOTTOM RAIL



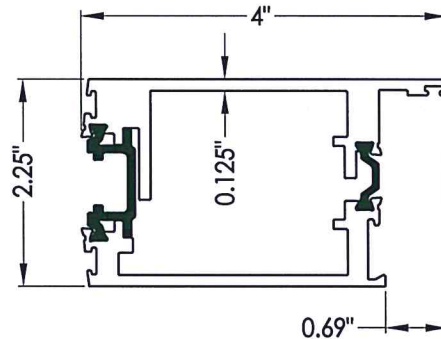
8 SUB SILL



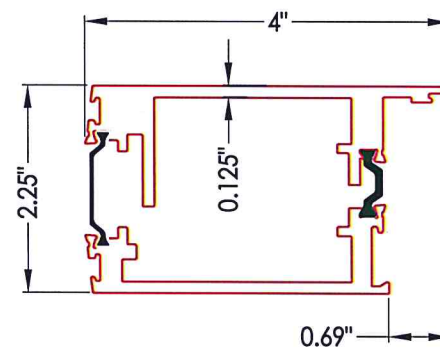
10 GLASS STOP 9/16"



18 SILL PAN



6 MULTI-POINT LOCK STILE



7 ARCHETYPE LOCK STILE

PRODUCT:

FLEETWOOD
SPEC. 1

PART OR ASSEMBLY:

BILL OF MATERIALS

NO.	DATE	REVISIONS	BY

RW BUILDING
CONSULTANTS, INC.
813.659.9197

DATE: 10/19/21
SCALE: N.T.S.
DWG. BY: LFS
CHK. BY: RW
DRAWING NO.: L-9491
SHEET 9 of 10

Testing Evaluation Laboratories Inc.
Specimen Complies with Drawing
Deviations Noted - TEL# 01993414
Date 12/14/2021 Verified by VKW

BILL OF MATERIALS

ITEM #	DESCRIPTION	MATERIAL
B	2X TEST BUCK (SG >= 0.55)	WOOD
C	1/4" MAX. SHIM SPACE	-
F	#10 X 2-1/2" PFH WOOD SCREW	STEEL
G	1/4" Ø X 3-1/4" PFH ITW BUILDDEX CONCRETE SCREW	STEEL
H	#10 X 3-1/2" PFH WOOD SCREW	STEEL
1	HEAD	6063-T6 ALUM
2	JAMB	6063-T6 ALUM
3	PANEL STOP	6063-T6 ALUM
4	TOP RAIL	6063-T6 ALUM
5	BOTTOM RAIL	6063-T6 ALUM
6	MULTI-POINT LOCK STILE	6063-T6 ALUM
7	ARCHETYPE LOCK STILE	6063-T6 ALUM
8	SUB SILL	6063-T6 ALUM
10	GLASS STOP (9/16")	6063-T6 ALUM
12	FIN SEAL MOHAIR - AMESBURY	MOHAIR
13	LARGE BULB VINYL (EPDM 70 DUROMETER) - TREMCO	VINYL
16	MINI BULB VINYL (EPDM 70 DUROMETER) - TREMCO	VINYL
17	DROP DOWN SEAL	-
18	SILL PAN	-
19	FRITSJURGENS SYSTEM M PIVOT HINGE	-
19A	PIVOT HINGE CEILING PLATE	-
19B	PIVOT HINGE TOP PIVOT	-
19C	PIVOT HINGE FLOOR PLATE	-
20	MULTI-POINT MANUAL LEVER LOCK (5 PT.)	-
22	DUAL POINT LEVER ACTIVATED MANUAL LOCK (2 PT. SHOOTBOLTS)	-
23	MULTI-POINT MANUAL LEVER LOCK (3 PT.)	-
25	#8 X 2-1/2" PFH WOOD SCREW	STEEL
26	#8 X 1/2" PFH SMS	STEEL
27	#8 X 1" PFH SMS	STEEL
30	LEVER LOCK LATCH & DEADBOLT STRIKE PLATE	STEEL
31	LEVER LOCK TONGUE STRIKE PLATE	STEEL
32	DUAL POINT SHOOTBOLT STRIKE PLATE (@ SILL)	STEEL
34	DUAL POINT & LEVER LOCK SHOOTBOLT STRIKE PLATE	STEEL

PRODUCT: FLEETWOOD SPEC. 1

PART OR ASSEMBLY: BILL OF MATERIALS & GLAZING DETAILS

				NO.	DATE	BY



RW BUILDING
CONSULTANTS, INC.
813.659.9197

DATE: 10/19/21

SCALE: N.T.S.

DWG. BY: LFS

CHK. BY: RW

DRAWING NO.: L-9491

SHEET 10 OF 10

Testing Evaluation Laboratories Inc.
Specimen Complies with Drawing
Deviations Noted - TEL# 01993414
Date 12/14/2021 Verified by VKW

TABLE OF CONTENTS	
SHEET #	DESCRIPTION
1	Table of Contents
2	Test Elevation
3	Horizontal Cross Section
4	Horizontal Cross Section
5	Vertical Cross Section
6	Vertical Cross Section
7	Frame Anchoring
8	Glazing Details
9	Components
10	Bill of Materials

PRODUCT:
FLEETWOOD
SPEC. 5, 5a, 5b, 5c

PART OR ASSEMBLY:
TABLE OF CONTENTS

NO.	DATE	BY	REVISIONS



DATE: 11/04/21

SCALE: N.T.S.

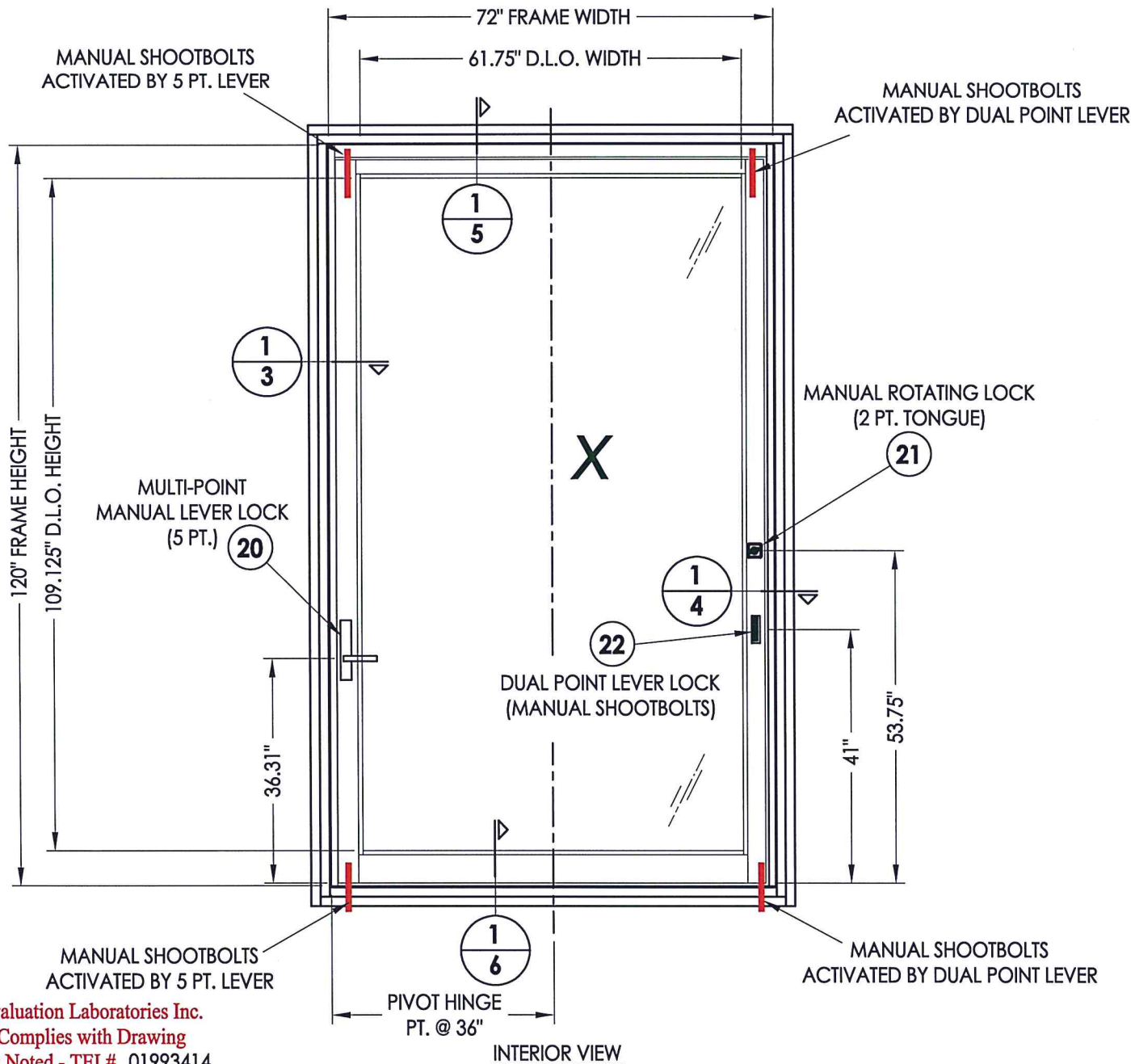
DWG. BY: LFS

CHK. BY: RW


DRAWING NO.:
L-9495

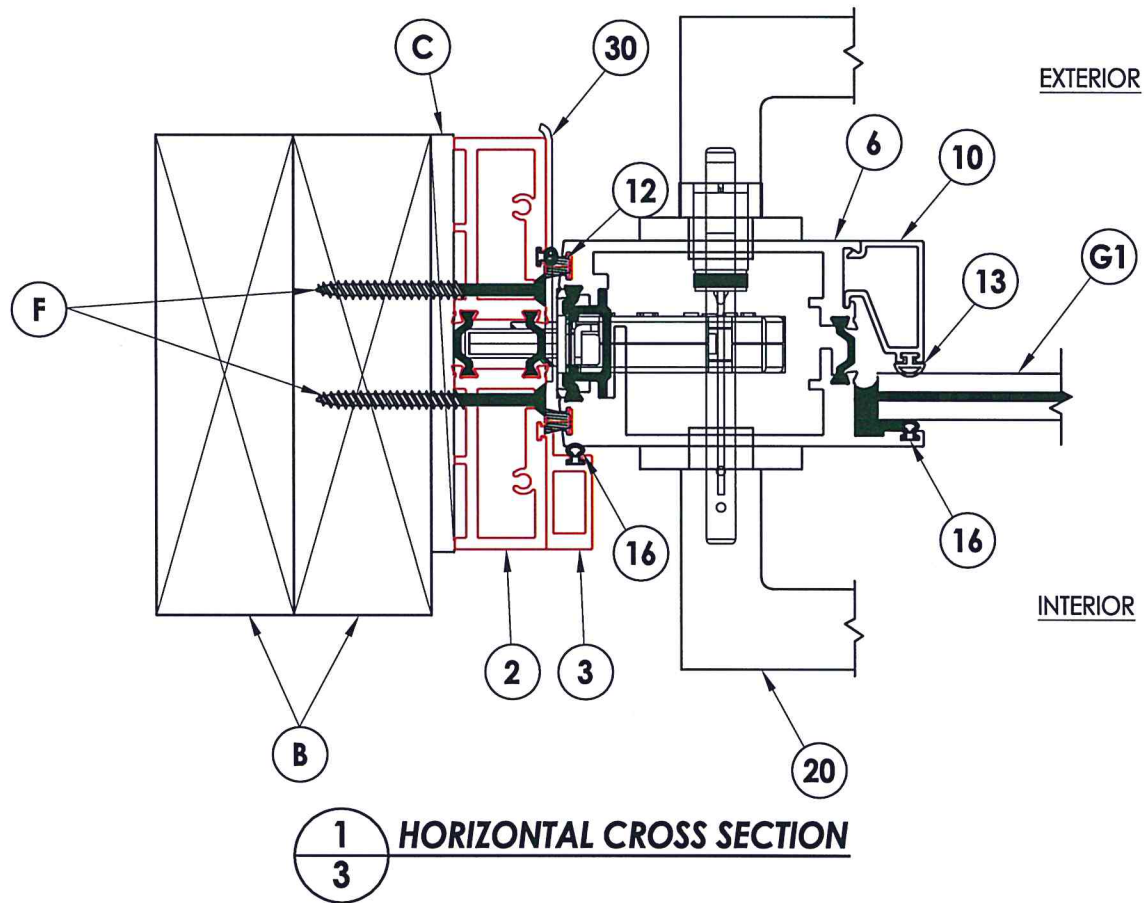
SHEET 1 OF 10

Testing Evaluation Laboratories Inc.
Specimen Complies with Drawing
Deviations Noted - TEL# 01993414
Date 12/14/2021 Verified by VKW




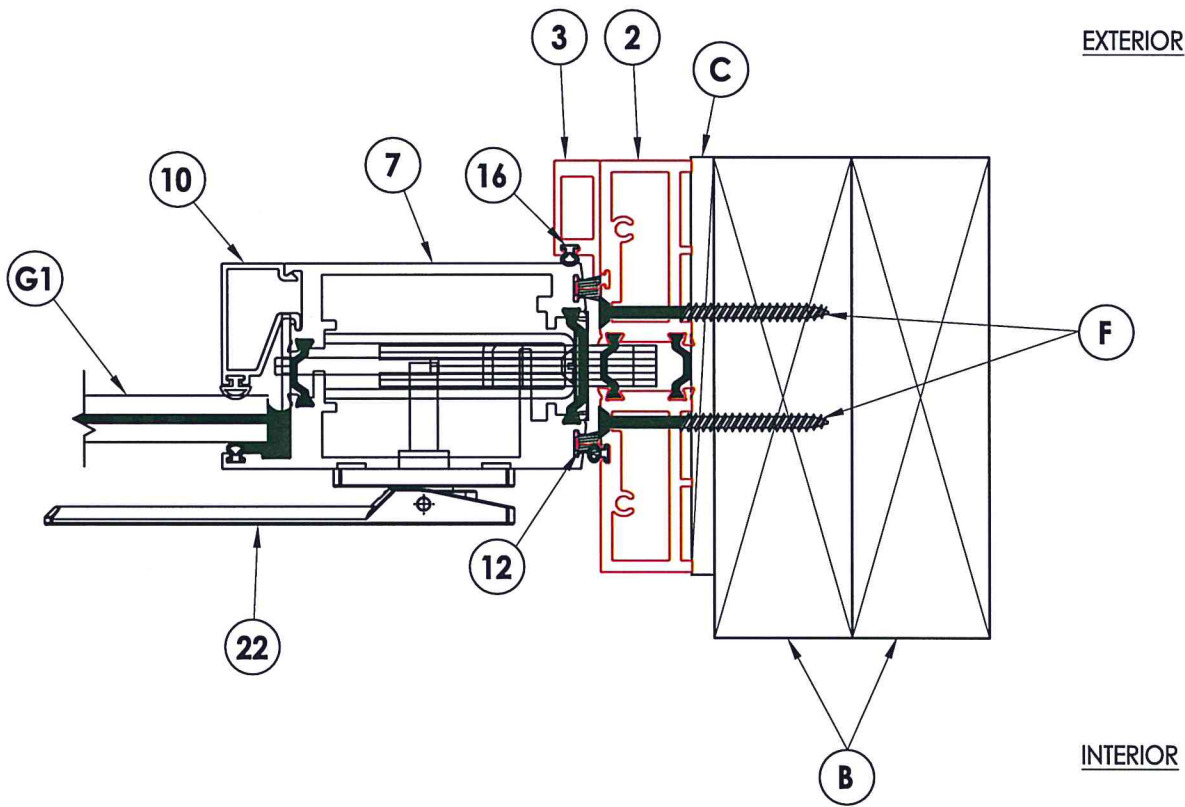
Testing Evaluation Laboratories Inc.
Specimen Complies with Drawing
Deviations Noted - TEL# 01993414
Date 12/14/2021 Verified by VKW

PRODUCT:		FLEETWOOD SPEC. 5, 5a, 5b, 5c	
PART OR ASSEMBLY:		TEST ELEVATION	
NO.	DATE	REVISIONS	BY
 RW BUILDING CONSULTANTS, INC. 813.659.9197			
DATE: 11/04/21			
SCALE: N.T.S.			
DWG. BY: LFS			
CHK. BY: RW			
DRAWING NO.: L-9495			
SHEET 2 OF 10			



Testing Evaluation Laboratories Inc.
 Specimen Complies with Drawing
 Deviations Noted - TEL# 01993414
 Date 12/14/2021 Verified by VKW

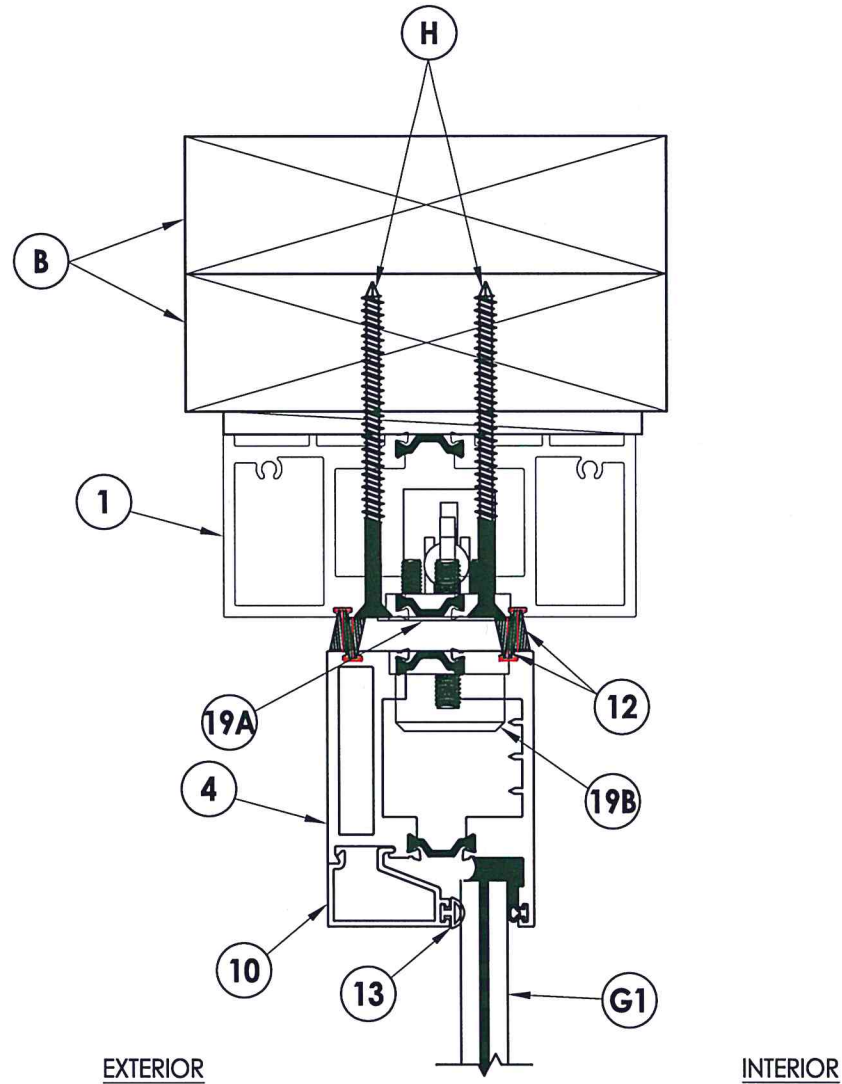
PRODUCT:	FLEETWOOD SPEC. 5, 5a, 5b, 5c		
PART OR ASSEMBLY:	HORIZONTAL CROSS SECTION		
NO.	DATE	REVISIONS	BY
 RW BUILDING CONSULTANTS, INC. 813.659.9197			
DATE: 11/04/21			
SCALE: N.T.S.			
DWG. BY: LFS			
CHK. BY: RW			
DRAWING NO.: L-9495			
SHEET <u>3</u> OF <u>10</u>			



1 HORIZONTAL CROSS SECTION
4


PRODUCT:		FLEETWOOD SPEC. 5, 5a, 5b, 5c	
PART OR ASSEMBLY:		HORIZONTAL CROSS SECTION	
NO.	DATE	REVISIONS	BY
DATE: 11/04/21			
SCALE: N.T.S.			
DWG. BY: LFS			
CHK. BY: RW			
DRAWING NO.: L-9495			
SHEET 4 OF 10			

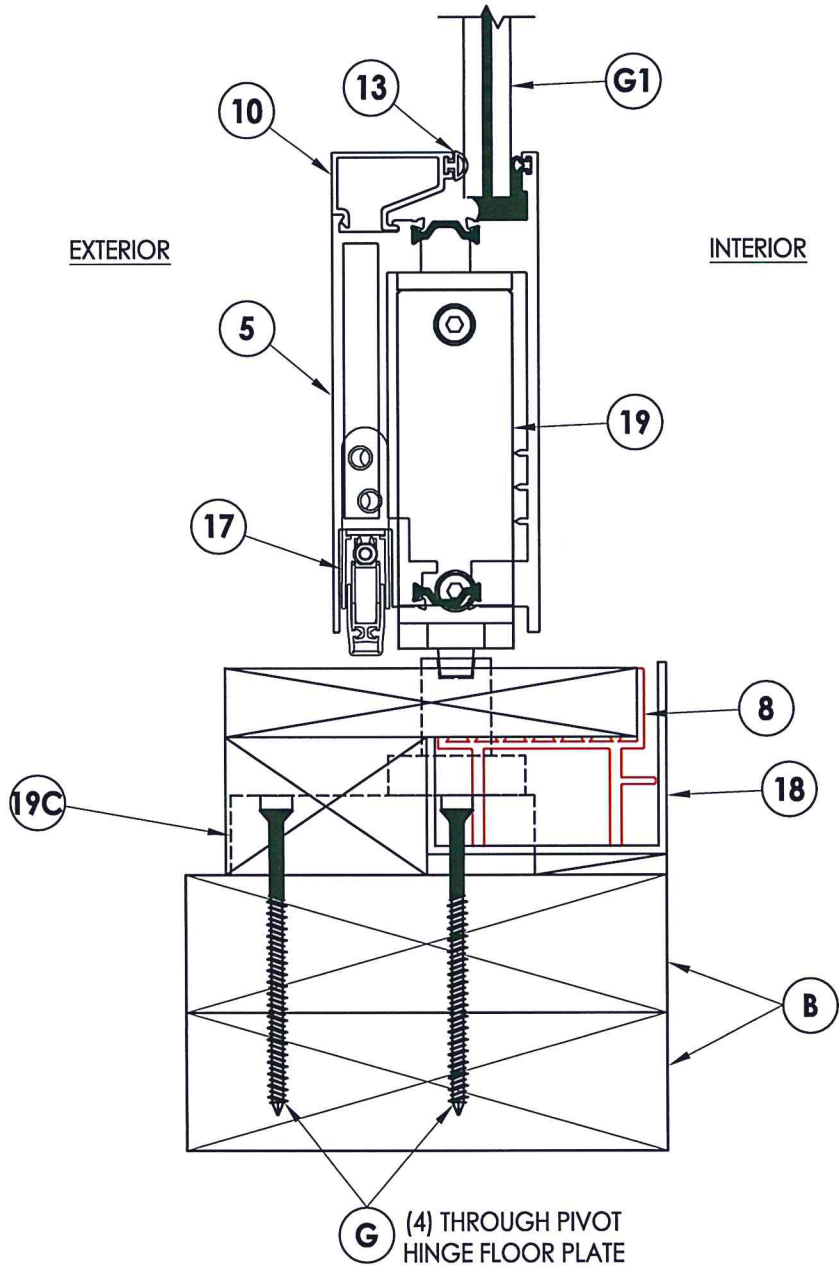
Testing Evaluation Laboratories Inc.
Specimen Complies with Drawing
Deviations Noted - TEL# 01993414
Date 12/14/2021 Verified by VKW



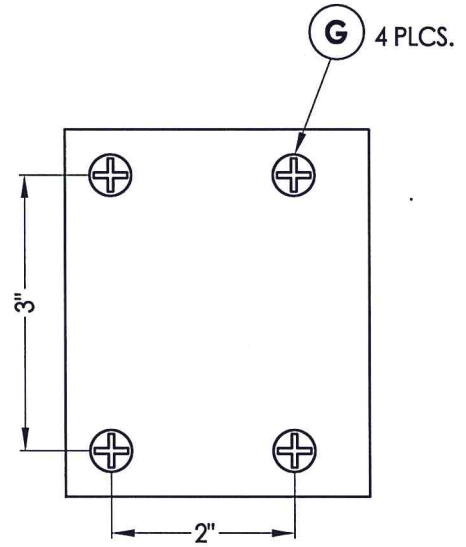
1 VERTICAL CROSS SECTION
5

Testing Evaluation Laboratories Inc.
Specimen Complies with Drawing
Deviations Noted - TEL# 01993414
Date 12/14/2021 Verified by VKW

PRODUCT:		FLEETWOOD SPEC. 5, 5a, 5b, 5c	
PART OR ASSEMBLY:		VERTICAL CROSS SECTION	
NO.	DATE	BY	REVISIONS
			
DATE: 11/04/21			
SCALE: N.T.S.			
DWG. BY: LFS			
CHK. BY: RW			
DRAWING NO.: L-9495			
SHEET <u>5</u> OF <u>10</u>			



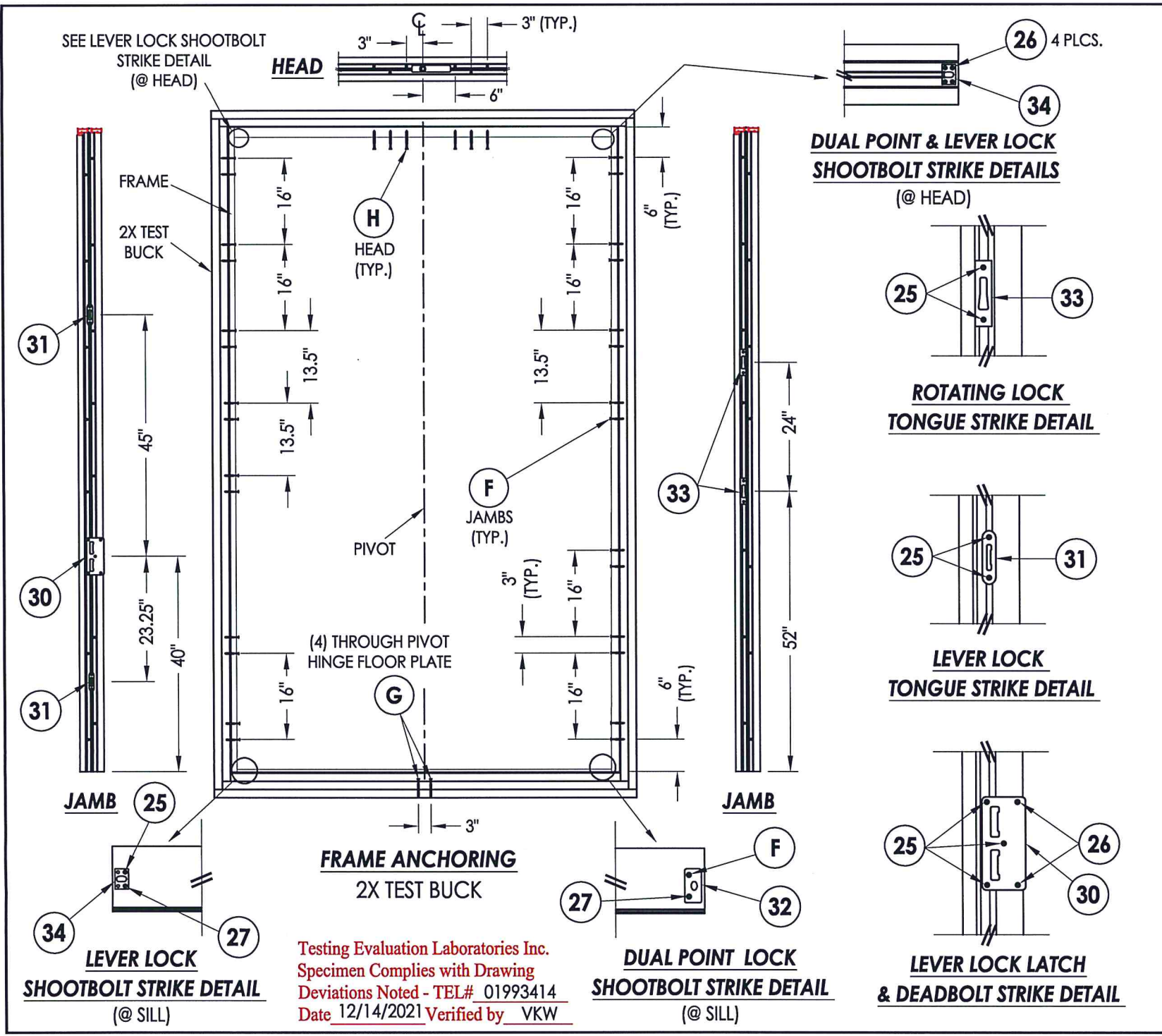
1
6 **VERTICAL CROSS SECTION**




PIVOT HINGE FLOOR PLATE PLAN VIEW

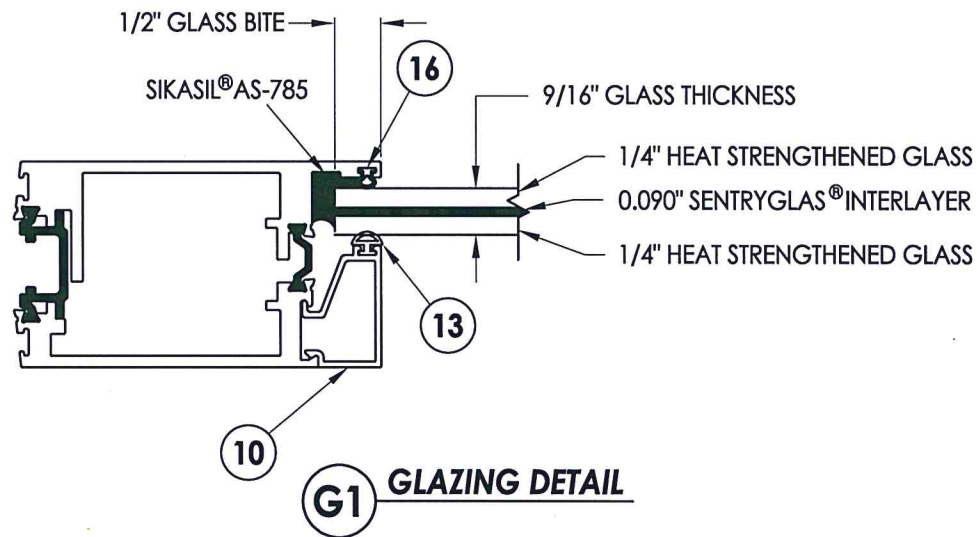
Testing Evaluation Laboratories Inc.
Specimen Complies with Drawing
Deviations Noted - TEL# 01993414
Date 12/14/2021 Verified by VKW

PRODUCT:		FLEETWOOD SPEC. 5, 5a, 5b, 5c	
PART OR ASSEMBLY:		VERTICAL CROSS SECTION	
NO.	DATE	REVISIONS	BY
DATE: 11/04/21			
SCALE: N.T.S.			
DWG. BY: LFS			
CHK. BY: RW			
DRAWING NO.: L-9495			
SHEET 6 OF 10			



PRODUCT:		FLEETWOOD SPEC. 5, 5a, 5b, 5c	
PART OR ASSEMBLY:		FRAME ANCHORING	
NO.	DATE	REVISIONS	BY
			
DATE: 11/04/21			
SCALE: N.T.S.			
DWG. BY: LFS			
CHK. BY: RW			
DRAWING NO.: L-9495			
SHEET 7 OF 10			

Testing Evaluation Laboratories Inc.
 Specimen Complies with Drawing
 Deviations Noted - TEL# 01993414
 Date 12/14/2021 Verified by VKW



PRODUCT:

FLEETWOOD
SPEC. 5, 5a, 5b, 5c

PART OR ASSEMBLY:

GLAZING DETAILS

NO.	DATE	REVISIONS	BY

 <p>RW BUILDING CONSULTANTS, INC. 813.659.9197</p>
--

DATE: 11/04/21

SCALE: N.T.S.

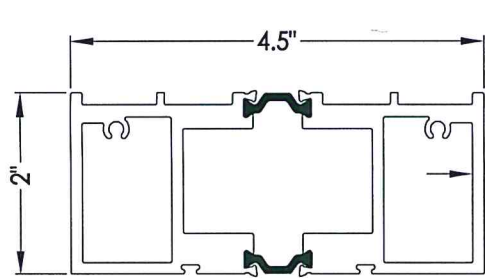
DWG. BY: LFS

CHK. BY: RW

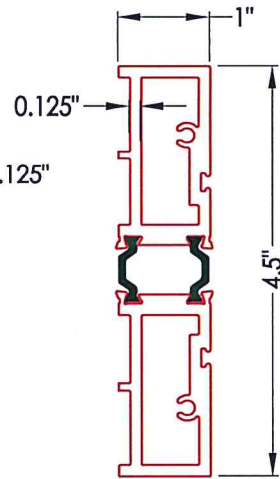
DRAWING NO.:
L-9495

SHEET 8 OF 10

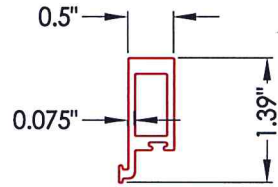
Testing Evaluation Laboratories Inc.
Specimen Complies with Drawing
Deviations Noted - TEL# 01993414
Date 12/14/2021 Verified by VKW



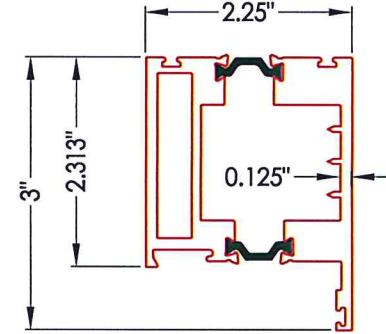
1 HEAD



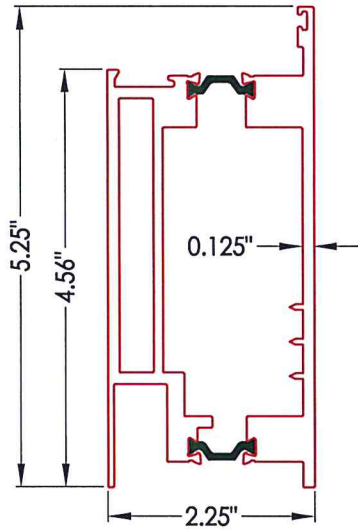
2 JAMB



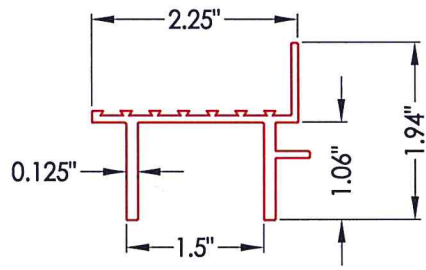
3 PANEL STOP



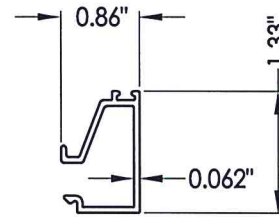
4 TOP RAIL



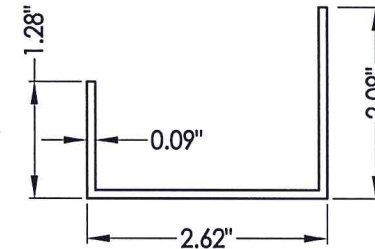
5 BOTTOM RAIL



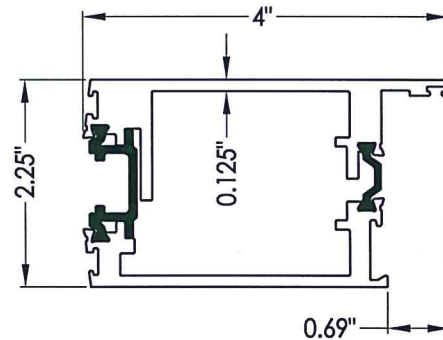
8 SUB SILL



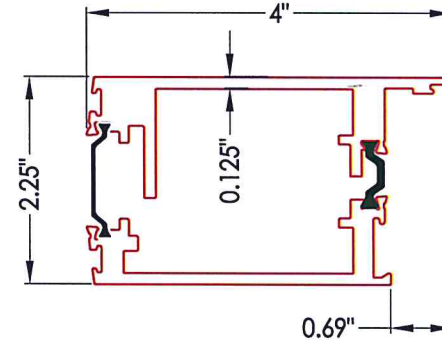
10 GLASS STOP 9/16"



18 SILL PAN



6 MULTI-POINT LOCK STILE



7 ARCHETYPE LOCK STILE

Testing Evaluation Laboratories Inc.
 Specimen Complies with Drawing
 Deviations Noted - TEL# 01993414
 Date 12/14/2021 Verified by VKW

PRODUCT:		FLEETWOOD SPEC. 5, 5a, 5b, 5c	
PART OR ASSEMBLY:		COMPONENTS	
NO.	DATE	REVISIONS	BY
DATE: 11/04/21			
SCALE: N.T.S.			
DWG. BY: LFS			
CHK. BY: RW			
DRAWING NO.: L-9495			
SHEET 9 OF 10			

BILL OF MATERIALS

M	DESCRIPTION	MATERIAL
B	2X TEST BUCK (SG >= 0.55)	WOOD
C	1/4" MAX. SHIM SPACE	-
F	#10 X 2-1/2" PFH WOOD SCREW	STEEL
G	1/4" Ø X 3-1/4" PFH ITW BUILDIX CONCRETE SCREW	STEEL
H	#10 X 3-1/2" PFH WOOD SCREW	STEEL
1	HEAD	6063-T6 ALUM
2	JAMB	6063-T6 ALUM
3	PANEL STOP	6063-T6 ALUM
4	TOP RAIL	6063-T6 ALUM
5	BOTTOM RAIL	6063-T6 ALUM
6	MULTI-POINT LOCK STILE	6063-T6 ALUM
7	ARCHETYPE LOCK STILE	6063-T6 ALUM
8	SUB SILL	6063-T6 ALUM
10	GLASS STOP (9/16")	6063-T6 ALUM
12	FIN SEAL MOHAIR - AMESBURY	MOHAIR
13	LARGE BULB VINYL (EPDM 70 DUROMETER) - TREMCO	VINYL
16	MINI BULB VINYL (EPDM 70 DUROMETER) - TREMCO	VINYL
17	DROP DOWN SEAL	-
18	SILL PAN	-
19	FRITSJURGENS SYSTEM M PIVOT HINGE	-
19A	PIVOT HINGE CEILING PLATE	-
19B	PIVOT HINGE TOP PIVOT	-
19C	PIVOT HINGE FLOOR PLATE	-
20	MULTI-POINT MANUAL LEVER LOCK (5 PT.)	-
21	MANUAL ROTATING LOCK (2 PT. TONGUE)	-
22	DUAL POINT LEVER ACTIVATED MANUAL LOCK (2 PT. SHOOTBOLTS)	-
25	#8 X 2-1/2" PFH WOOD SCREW	STEEL
26	#8 X 1/2" PFH SMS	STEEL
27	#8 X 1" PFH SMS	STEEL
30	LEVER LOCK LATCH & DEADBOLT STRIKE PLATE	STEEL
31	LEVER LOCK TONGUE STRIKE PLATE	STEEL
32	DUAL POINT SHOOTBOLT STRIKE PLATE (@ SILL)	STEEL
33	ROTATING LOCK TONGUE STRIKE PLATE	STEEL
34	DUAL POINT & LEVER LOCK SHOOTBOLT STRIKE PLATE	STEEL

PRODUCT:

FLEETWOOD
SPEC. 5, 5a, 5b, 5c

PART OR ASSEMBLY:

BILL OF MATERIALS

REVISIONS

NO. DATE BY



DATE: 11/04/21

SCALE: N.T.S.

DWG. BY: LFS

CHK. BY: RW

DRAWING NO.:
L-9495

SHEET 10 of 10

Testing Evaluation Laboratories Inc.
Specimen Complies with Drawing
Deviations Noted - TEL# 01993414
Date 12/14/2021 Verified by VKW

TABLE OF CONTENTS	
SHEET #	DESCRIPTION
1	Table of Contents
2	Test Elevation
3	Horizontal Cross Section
4	Horizontal Cross Section
5	Vertical Cross Section
6	Vertical Cross Section
7	Frame Anchoring
8	Glazing Details
9	Components
10	Bill of Materials

PRODUCT:
FLEETWOOD
SPEC. 6, 6a

PART OR ASSEMBLY:
TABLE OF CONTENTS

NO.	DATE	BY	REVISIONS

RW BUILDING
CONSULTANTS, INC.
813.659.9197

DATE: 11/04/21

SCALE: N.T.S.

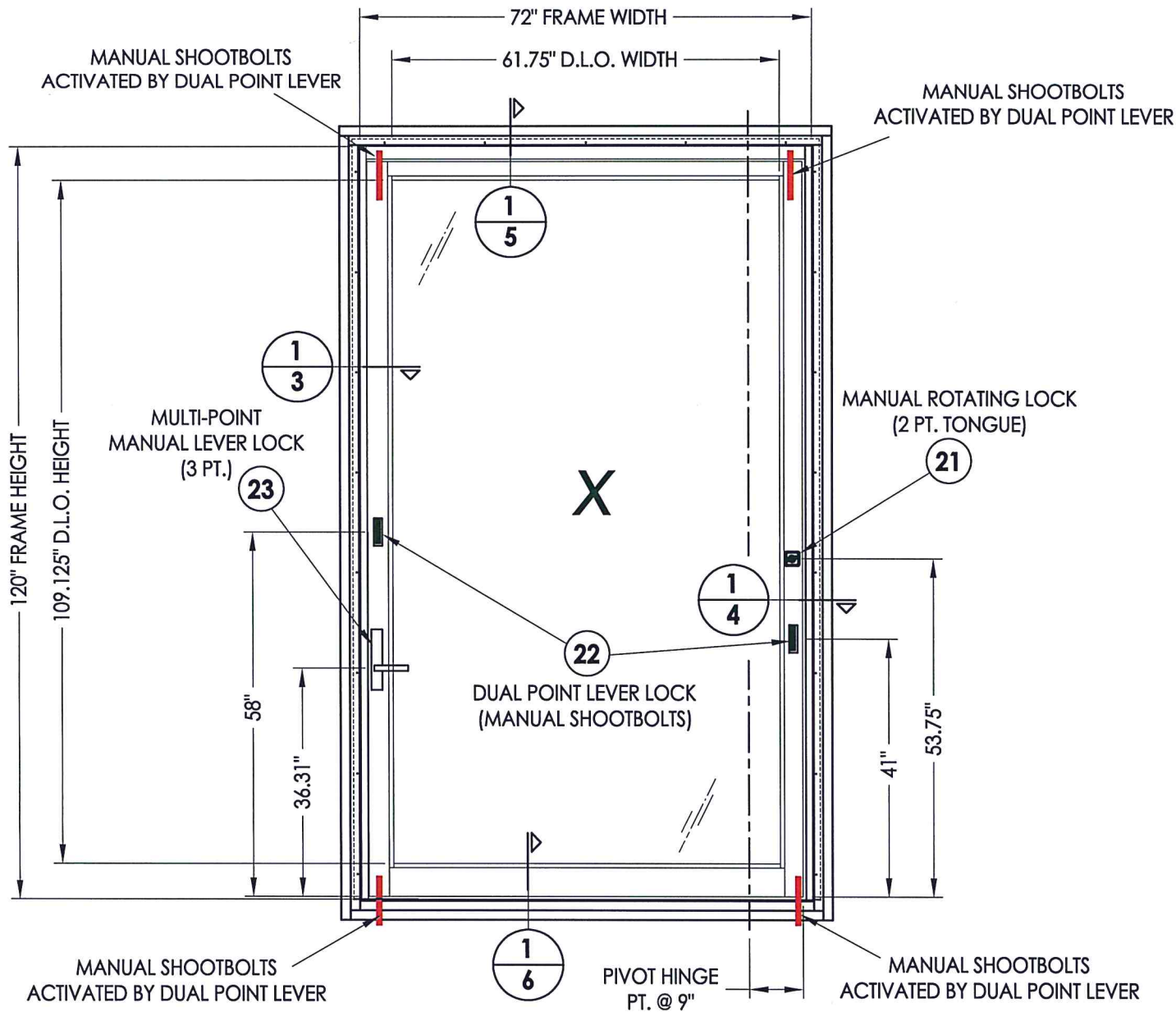
DWG. BY: LFS

CHK. BY: RW

DRAWING NO.:
L-9496

SHEET 1 OF 10

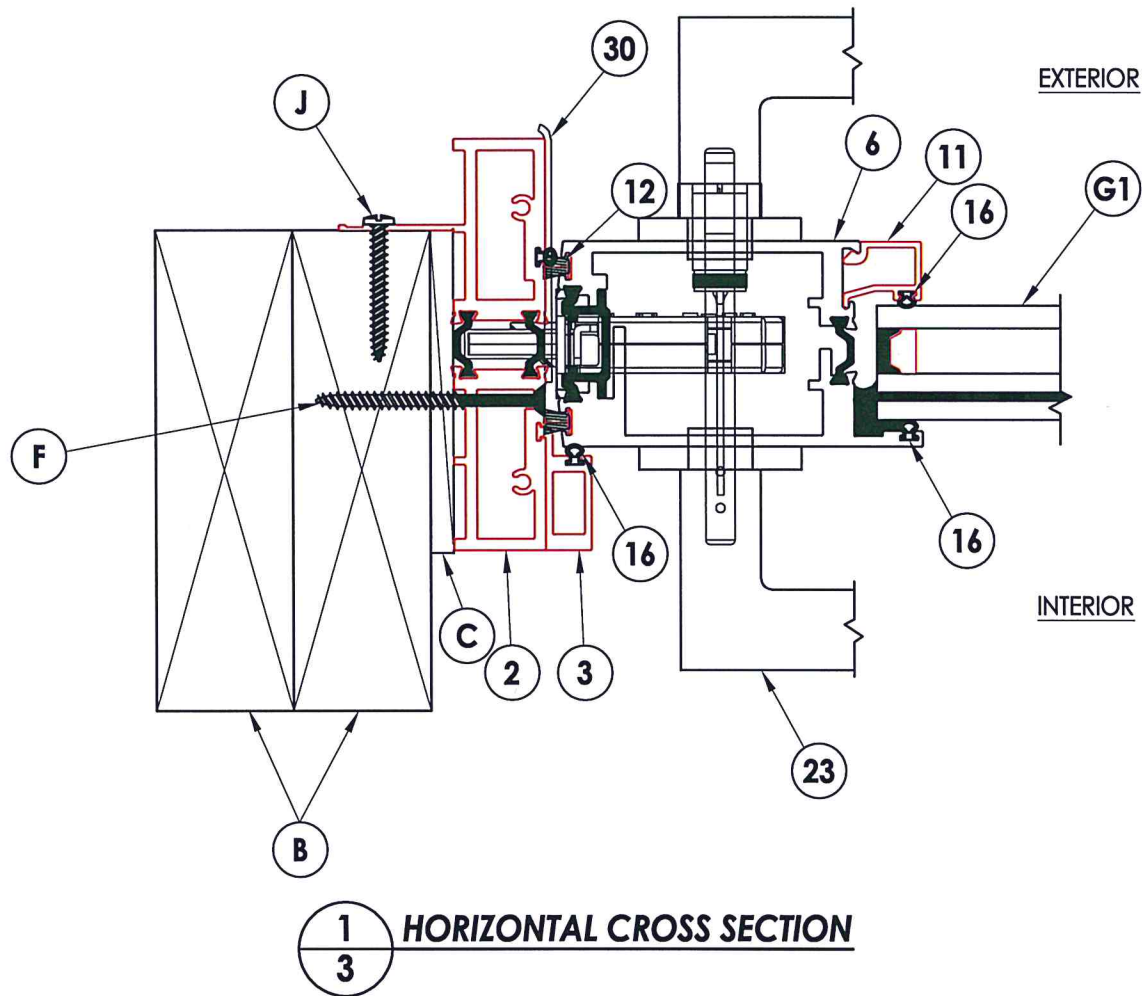
Testing Evaluation Laboratories Inc.
Specimen Complies with Drawing
Deviations Noted - TEL# 01993414
Date 12/14/2021 Verified by VKW




INTERIOR VIEW

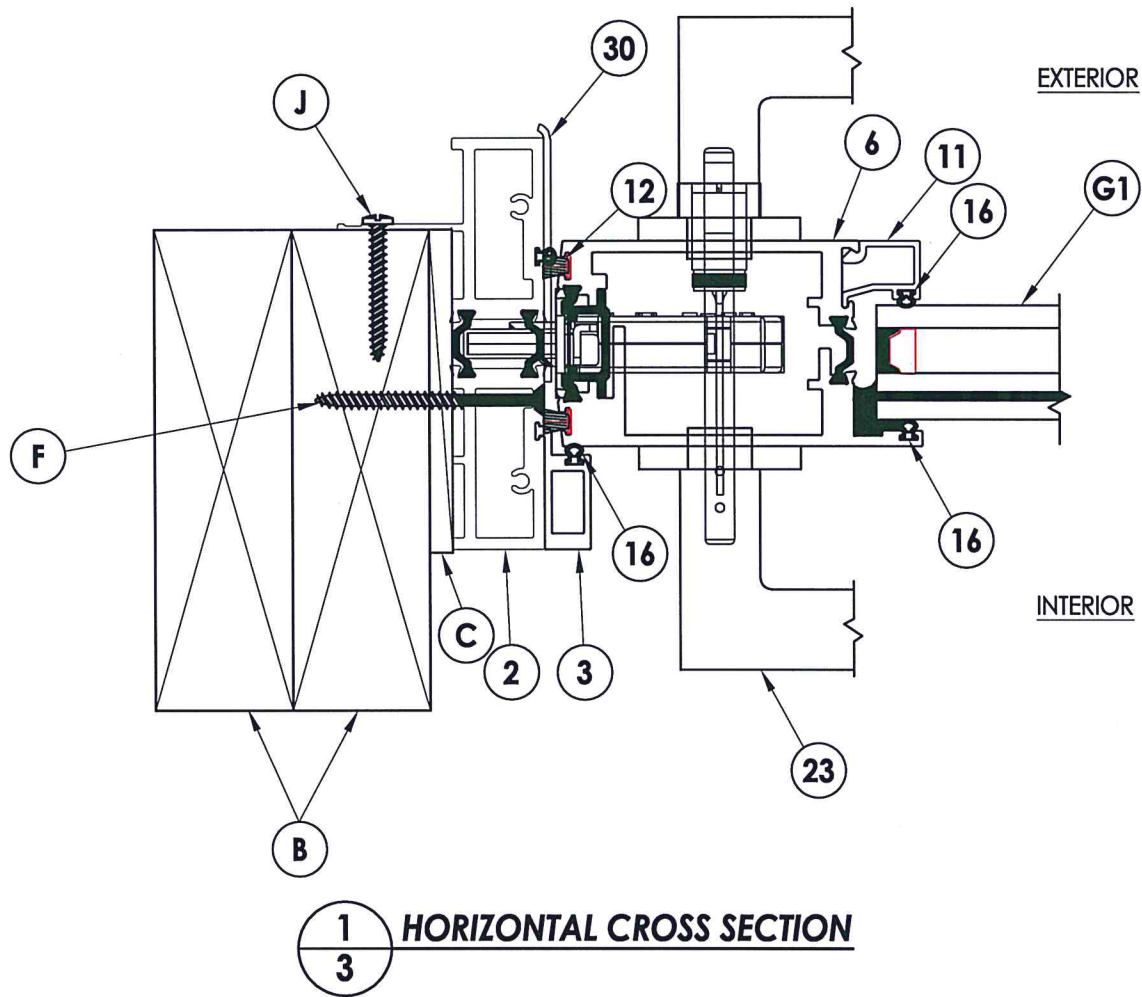
Testing Evaluation Laboratories Inc.
 Specimen Complies with Drawing
 Deviations Noted - TEL# 01993414
 Date 12/14/2021 Verified by VKW

PRODUCT:		FLEETWOOD SPEC. 6, 6a	
PART OR ASSEMBLY:		TEST ELEVATION	
NO.	DATE	BY	REVISIONS
DATE: 11/04/21			
SCALE: N.T.S.			
DWG. BY: LFS			
CHK. BY: RW			
DRAWING NO.: L-9496			
SHEET 2 OF 10			




PRODUCT:		FLEETWOOD SPEC. 6, 6a	
PART OR ASSEMBLY:		HORIZONTAL CROSS SECTION	
NO.	DATE	REVISIONS	BY
 RW BUILDING CONSULTANTS, INC. 813.659.9197			
DATE: 11/04/21			
SCALE: N.T.S.			
DWG. BY: LFS			
CHK. BY: RW			
DRAWING NO.: L-9496			
SHEET 3 OF 10			

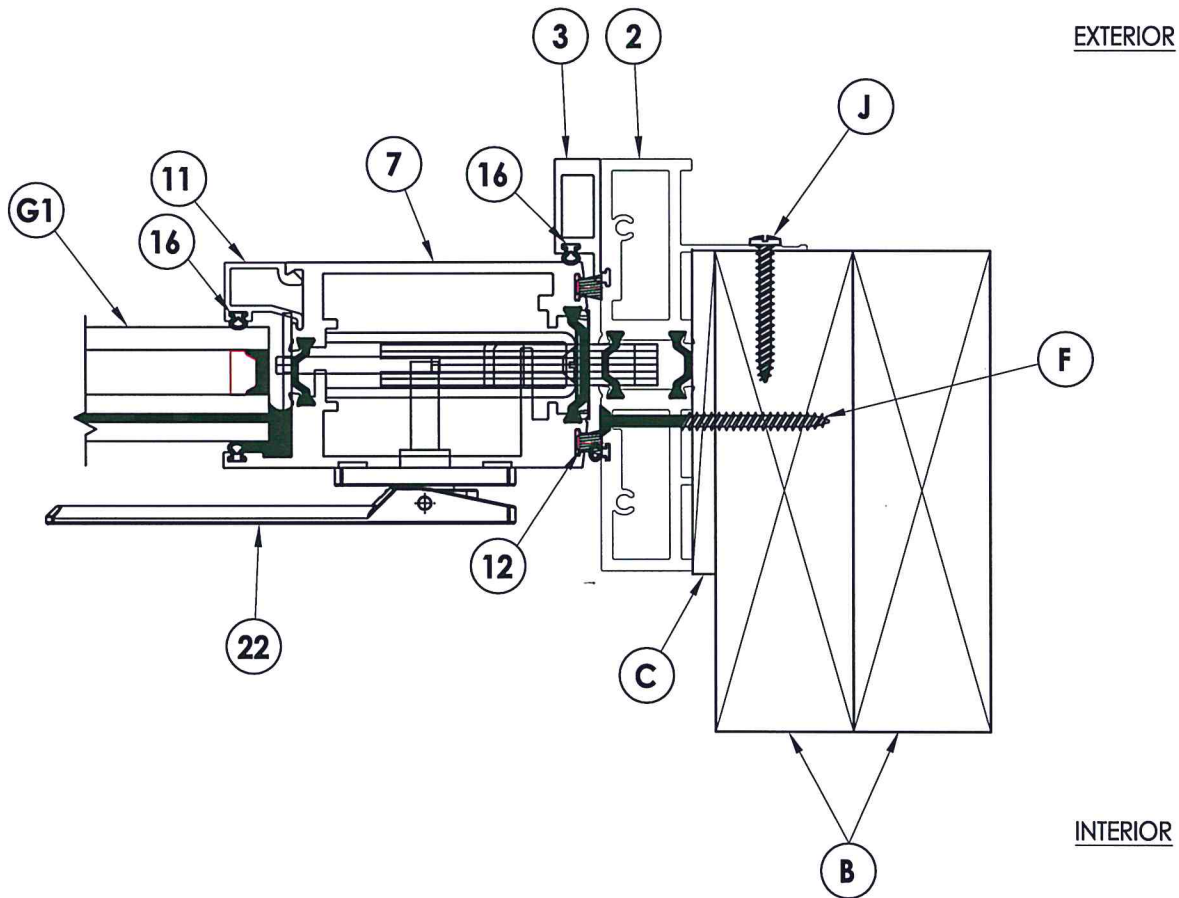
Testing Evaluation Laboratories Inc.
 Specimen Complies with Drawing
 Deviations Noted - TEL# 01993414
 Date 12/14/2021 Verified by VKW



1
3 HORIZONTAL CROSS SECTION

Testing Evaluation Laboratories Inc.
 Specimen Complies with Drawing
 Deviations Noted - TEL# 01993414
 Date 12/14/2021 Verified by VKW

PRODUCT: FLEETWOOD SPEC. 6, 6a		PART OR ASSEMBLY: HORIZONTAL CROSS SECTION	
NO.	DATE	REVISIONS	BY
 RW BUILDING CONSULTANTS, INC. 813.659.9197			
DATE: 11/04/21			
SCALE: N.T.S.			
DWG. BY: LFS			
CHK. BY: RW			
DRAWING NO.: L-9496			
SHEET 3 OF 10			



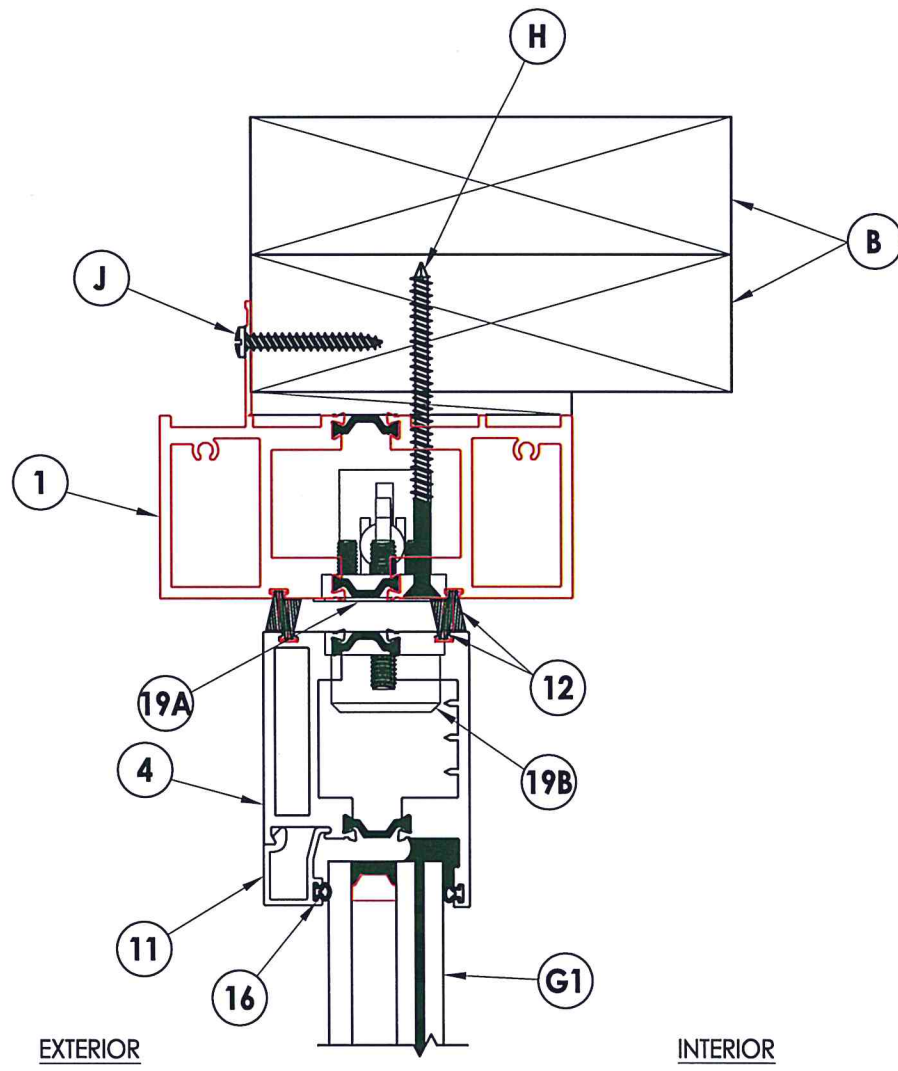
1
4 **HORIZONTAL CROSS SECTION**

EXTERIOR

INTERIOR

PRODUCT:		FLEETWOOD SPEC. 6, 6a	
PART OR ASSEMBLY:		HORIZONTAL CROSS SECTION	
NO.	DATE	BY	REVISIONS
 RW BUILDING CONSULTANTS, INC. 813.659.9197			
DATE: 11/04/21			
SCALE: N.T.S.			
DWG. BY: LFS			
CHK. BY: RW			
DRAWING NO.: L-9496			
SHEET 4 OF 10			

Testing Evaluation Laboratories Inc.
 Specimen Complies with Drawing
 Deviations Noted - TEL# 01993414
 Date 12/14/2021 Verified by VKW



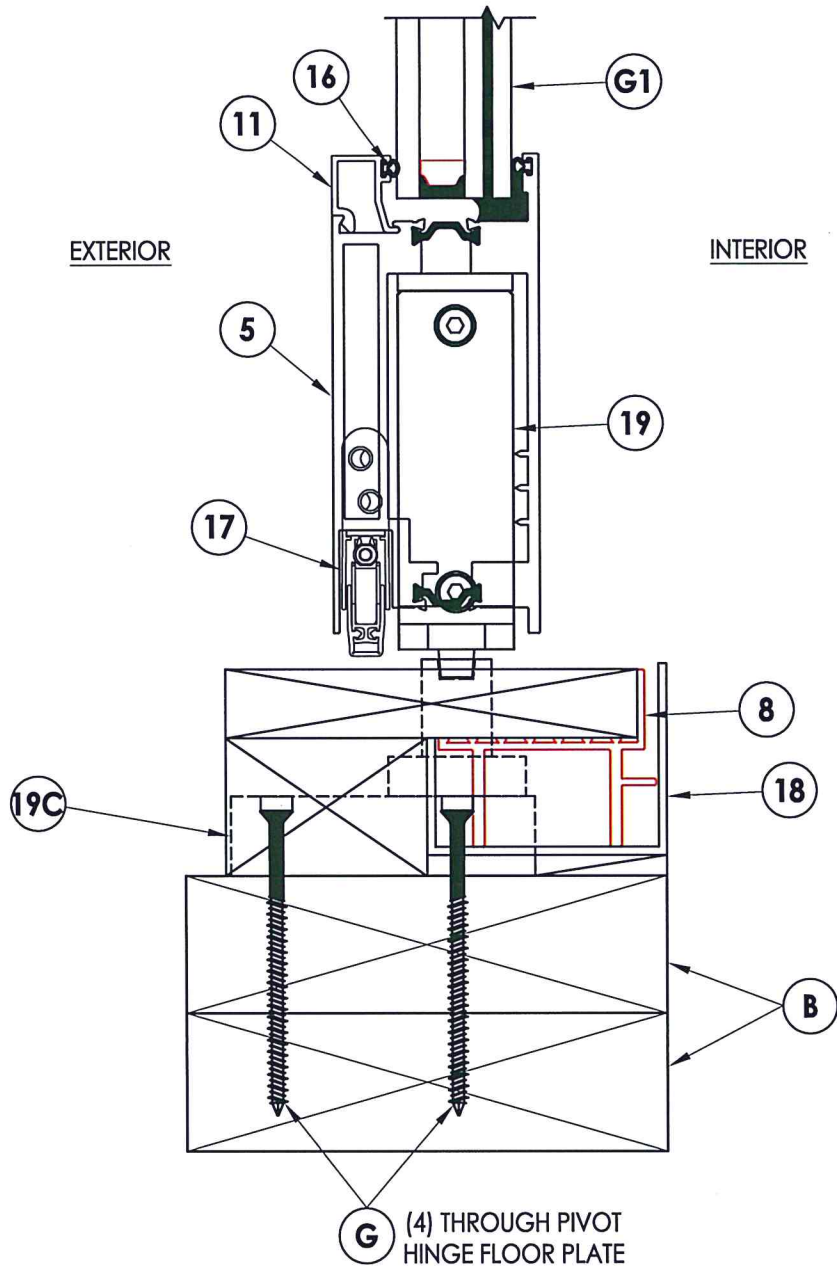
1
5 VERTICAL CROSS SECTION

Testing Evaluation Laboratories Inc.
 Specimen Complies with Drawing
 Deviations Noted - TEL# 01993414
 Date 12/14/2021 Verified by VKW

PRODUCT: FLEETWOOD SPEC. 6, 6a		PART OR ASSEMBLY: VERTICAL CROSS SECTION	
		NO.	DATE
		BY	REVISIONS
DATE: 11/04/21			
SCALE: N.T.S.			
DWG. BY: LFS			
CHK. BY: RW			
DRAWING NO.: L-9496			
SHEET 5 of 10			

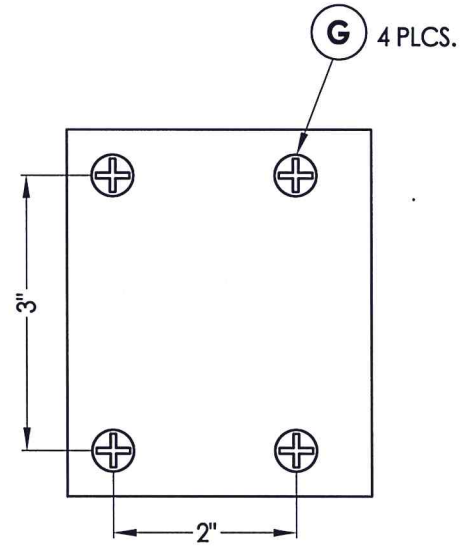
EXTERIOR

INTERIOR



G (4) THROUGH PIVOT HINGE FLOOR PLATE

1
6 VERTICAL CROSS SECTION



PIVOT HINGE FLOOR PLATE PLAN VIEW

PRODUCT: FLEETWOOD SPEC. 6, 6a

PART OR ASSEMBLY: VERTICAL CROSS SECTION

NO.	DATE	REVISIONS	BY

RW BUILDING CONSULTANTS, INC.
813.659.9197

DATE: 11/04/21

SCALE: N.T.S.

DWG. BY: LFS

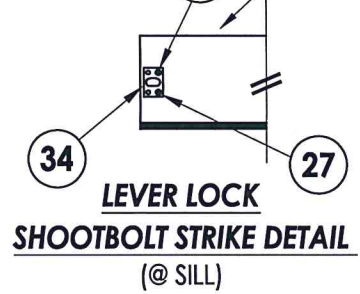
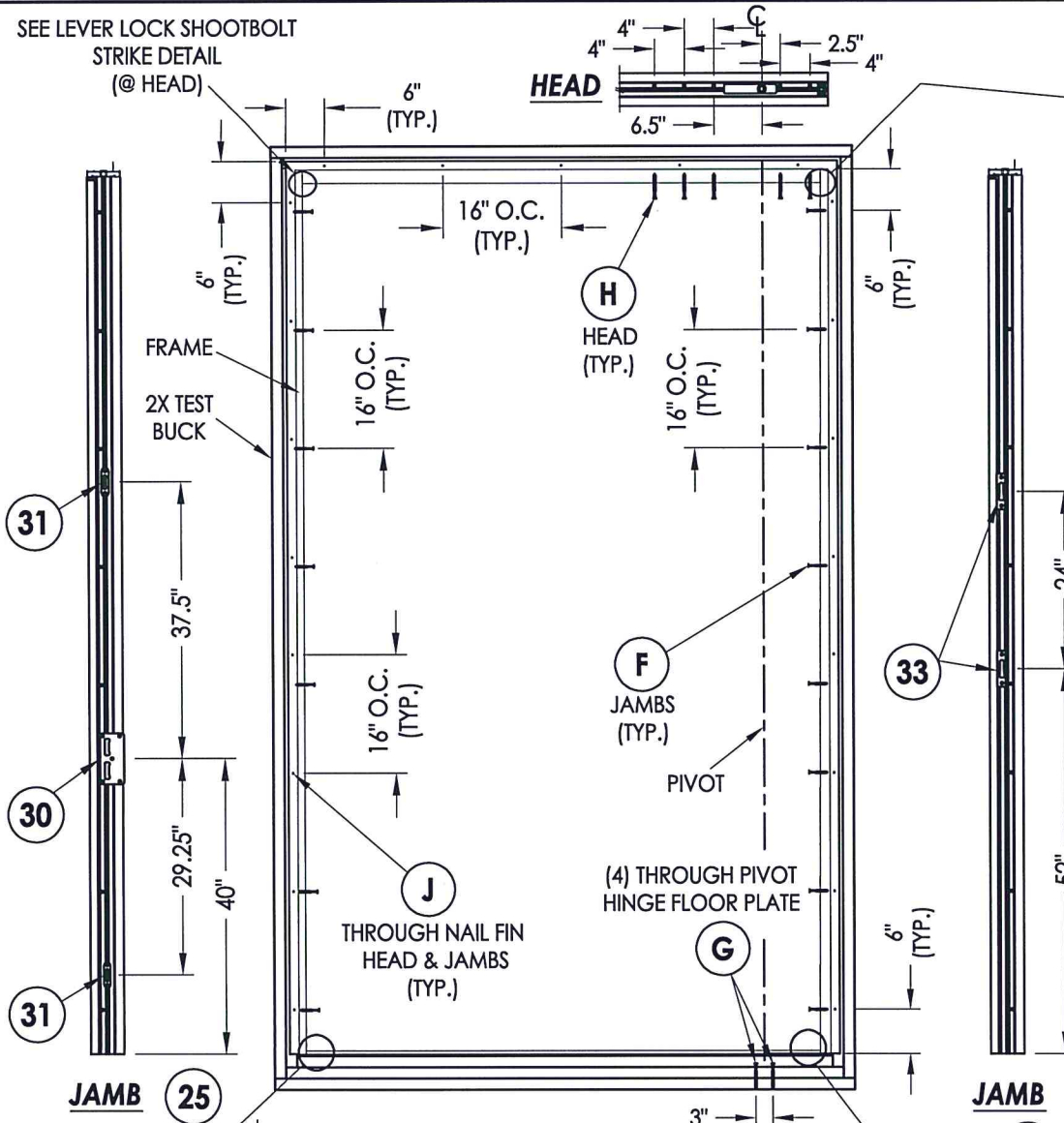
CHK. BY: RW

DRAWING NO.: L-9496

SHEET 6 OF 10

Testing Evaluation Laboratories Inc.
Specimen Complies with Drawing
Deviations Noted - TEL# 01993414
Date 12/14/2021 Verified by VKW

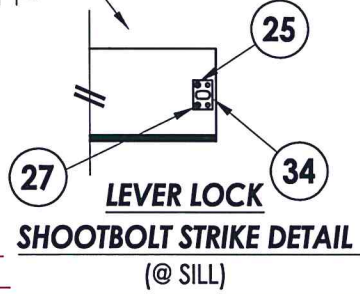
SEE LEVER LOCK SHOOTBOLT STRIKE DETAIL (@ HEAD)



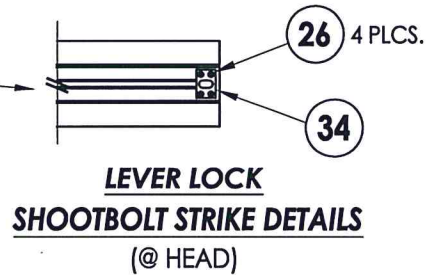
LEVER LOCK SHOOTBOLT STRIKE DETAIL
(@ SILL)

FRAME ANCHORING
2X TEST BUCK

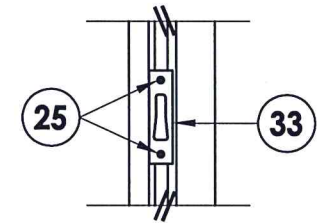
Testing Evaluation Laboratories Inc.
Specimen Complies with Drawing
Deviations Noted - TEL# 01993414
Date 12/14/2021 Verified by VKW



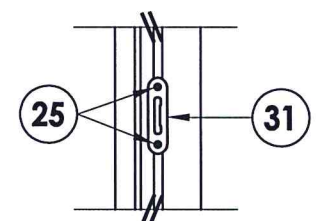
LEVER LOCK SHOOTBOLT STRIKE DETAIL
(@ SILL)



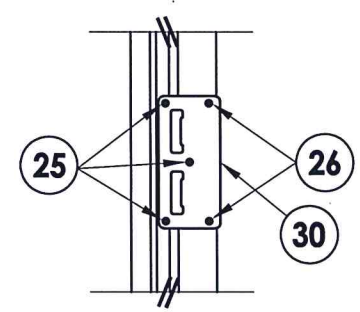
LEVER LOCK SHOOTBOLT STRIKE DETAILS
(@ HEAD)



ROTATING LOCK TONGUE STRIKE DETAIL

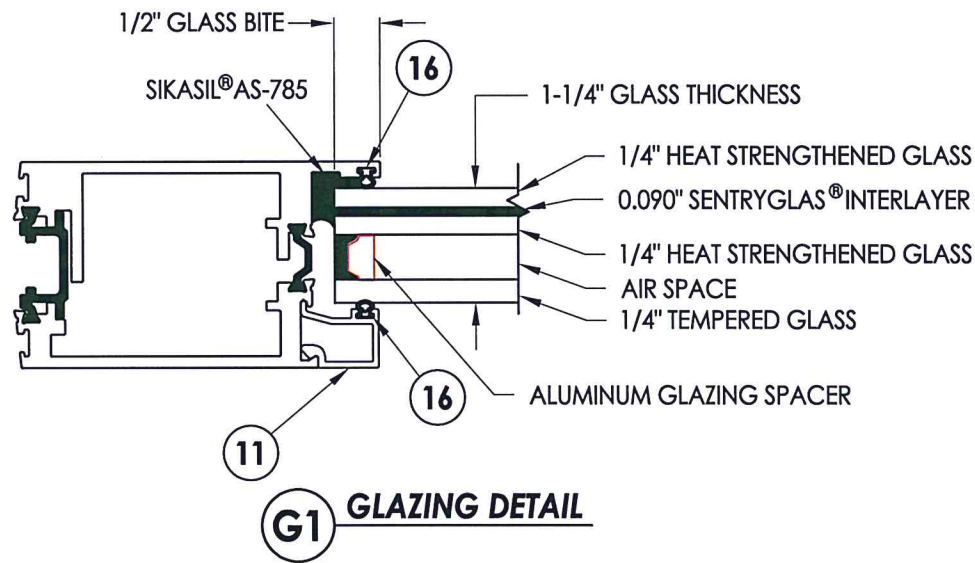


LEVER LOCK TONGUE STRIKE DETAIL



LEVER LOCK LATCH & DEADBOLT STRIKE DETAIL

PRODUCT:		FLEETWOOD SPEC. 6, 6a	
PART OR ASSEMBLY:		FRAME ANCHORING	
NO.	DATE	REVISIONS	BY
DATE: 11/04/21			
SCALE: N.T.S.			
DWG. BY: LFS			
CHK. BY: RW			
DRAWING NO.: L-9496			
SHEET 7 OF 10			

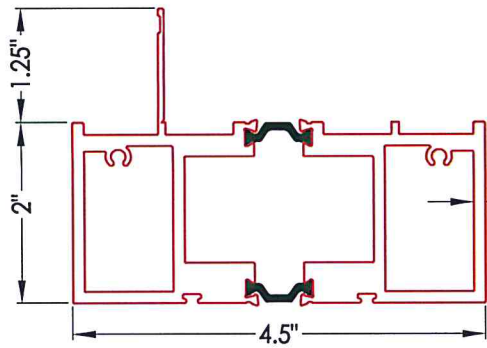


PRODUCT:		FLEETWOOD SPEC. 6, 6a	
PART OR ASSEMBLY:		GLAZING DETAILS	
NO.	DATE	BY	REVISIONS

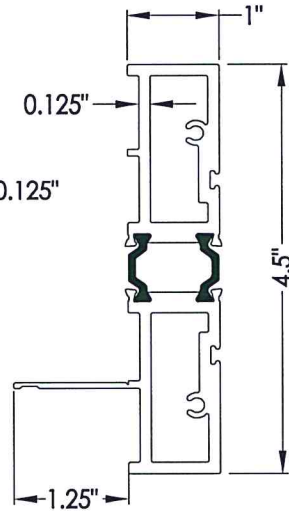
RW BUILDING
CONSULTANTS, INC.
813.659.9197

DATE: 11/04/21
 SCALE: N.T.S.
 DWG. BY: LFS
 CHK. BY: RW
 DRAWING NO.:
 L-9496
 SHEET 8 OF 10

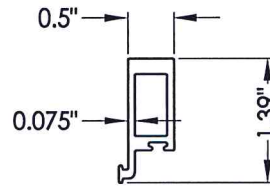
Testing Evaluation Laboratories Inc.
 Specimen Complies with Drawing
 Deviations Noted - TEL# 01993414
 Date 12/14/2021 Verified by VKW



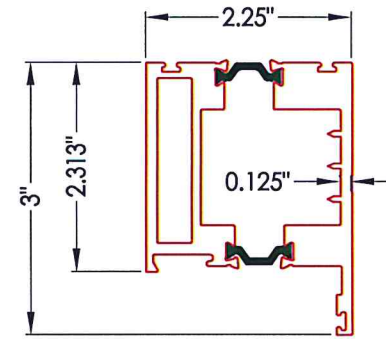
1 HEAD



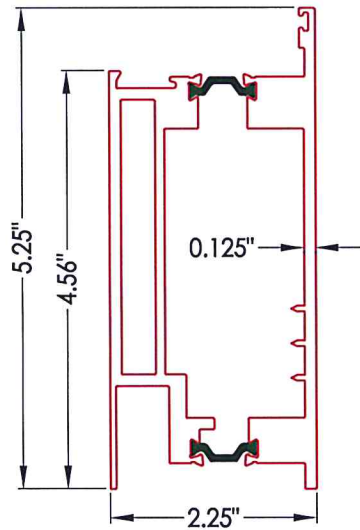
2 JAMB



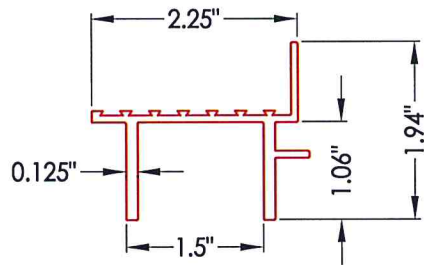
3 PANEL STOP



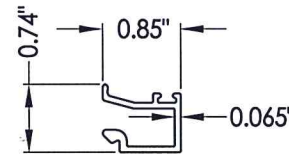
4 TOP RAIL



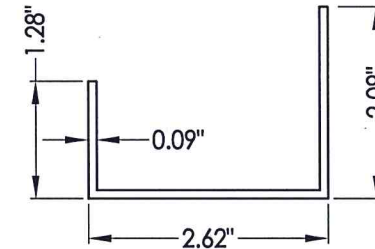
5 BOTTOM RAIL



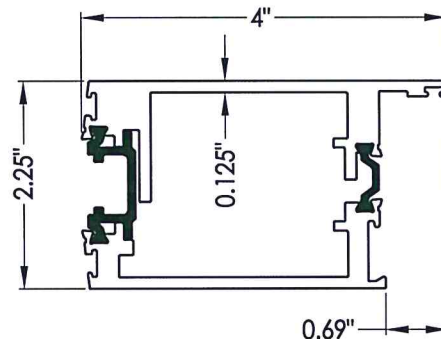
8 SUB SILL



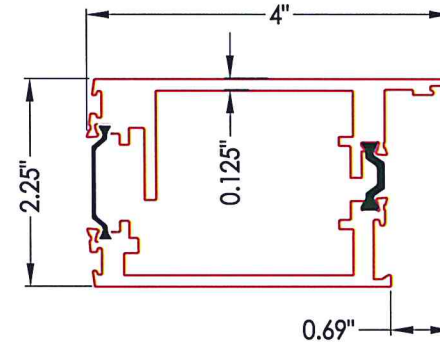
11 GLASS STOP 1-1/4"




18 SILL PAN



6 MULTI-POINT LOCK STILE




7 ARCHETYPE LOCK STILE

PRODUCT:		FLEETWOOD SPEC. 6, 6a	
PART OR ASSEMBLY:		COMPONENTS	
NO.	DATE	BY	REVISIONS
 RW BUILDING CONSULTANTS, INC. 813.659.9197			
DATE: 11/04/21			
SCALE: N.T.S.			
DWG. BY: LFS			
CHK. BY: RW			
DRAWING NO.: L-9496			
SHEET 9 OF 10			

Testing Evaluation Laboratories Inc.
 Specimen Complies with Drawing
 Deviations Noted - TEL# 01993414
 Date 12/14/2021 Verified by VKW

BILL OF MATERIALS

M	DESCRIPTION	MATERIAL
B	2X TEST BUCK (SG >= 0.55)	WOOD
C	1/4" MAX. SHIM SPACE	-
F	#10 X 2-1/2" PFH WOOD SCREW	STEEL
G	1/4" Ø X 3-1/4" PFH ITW BUILDEX CONCRETE SCREW	STEEL
H	#10 X 3-1/2" PFH WOOD SCREW	STEEL
J	#8 X 1-1/2" PPH SMS	STEEL
1	HEAD	6063-T6 ALUM
2	JAMB	6063-T6 ALUM
3	PANEL STOP	6063-T6 ALUM
4	TOP RAIL	6063-T6 ALUM
5	BOTTOM RAIL	6063-T6 ALUM
6	MULTI-POINT LOCK STILE	6063-T6 ALUM
7	ARCHETYPE LOCK STILE	6063-T6 ALUM
8	SUB SILL	6063-T6 ALUM
11	GLASS STOP (1-1/4")	6063-T6 ALUM
12	FIN SEAL MOHAIR - AMESBURY	MOHAIR
16	MINI BULB VINYL (EPDM 70 DUROMETER) - TREMCO	VINYL
17	DROP DOWN SEAL	-
18	SILL PAN	-
19	FRITSJURGENS SYSTEM M PIVOT HINGE	-
19A	PIVOT HINGE CEILING PLATE	-
19B	PIVOT HINGE TOP PIVOT	-
19C	PIVOT HINGE FLOOR PLATE	-
21	MANUAL ROTATING LOCK (2 PT. TONGUE)	-
22	DUAL POINT LEVER ACTIVATED MANUAL LOCK (2 PT. SHOOTBOLTS)	-
23	MULTI-POINT MANUAL LEVER LOCK (3 PT.)	-
25	#8 X 2-1/2" PFH WOOD SCREW	STEEL
26	#8 X 1/2" PFH SMS	STEEL
27	#8 X 1" PFH SMS	STEEL
30	LEVER LOCK LATCH & DEADBOLT STRIKE PLATE	STEEL
31	LEVER LOCK TONGUE STRIKE PLATE	STEEL
33	ROTATING LOCK TONGUE STRIKE PLATE	STEEL
34	DUAL POINT SHOOTBOLT STRIKE PLATE	STEEL

PRODUCT:	FLEETWOOD SPEC. 6, 6a			
	PART OR ASSEMBLY: BILL OF MATERIALS			
NO.	DATE	BY	REVISIONS	
				
DATE: 11/04/21				
SCALE: N.T.S.				
DWG. BY: LFS				
CHK. BY: RW				
DRAWING NO.: L-9496				
SHEET 10 OF 10				

Testing Evaluation Laboratories Inc.
 Specimen Complies with Drawing
 Deviations Noted - TEL# 01993414
 Date 12/14/2021 Verified by VKW