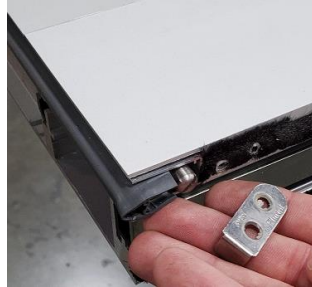
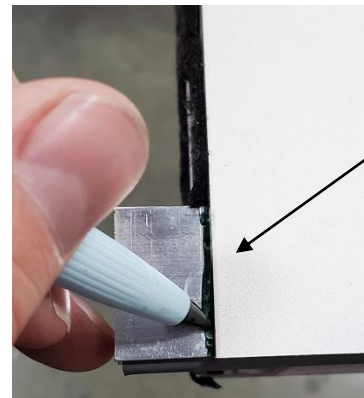


Series 4400-T Drop Sweep Replacement Instructions

1. **With the panel in either a vertical or horizontal position** remove (2) screws and (1) bracket from each side of the drop sweep. The drop sweep can now be removed.

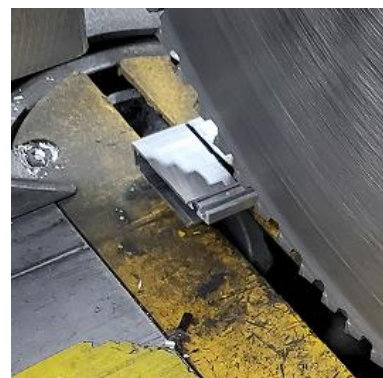
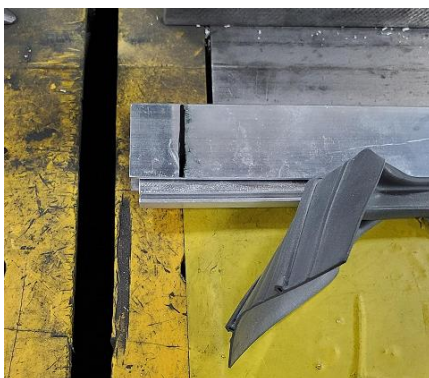


2. Ensure the new drop sweep measurement length is no less than the panel width, and no greater than 5" of panel width.
3. Place the new drop sweep in the bottom rail. Align the activation pin side to the edge of the panel. The drop sweep must be against the exterior most wall. On the opposite end, at the edge of the panel mark the sweep.



Caution: DO NOT apply pressure to the outer housing or block the sweep during activation. This will prevent the sweep from dropping.

4. Remove the new sweep from the bottom rail and activate pin. Turn pin counter clockwise to extend. With the pin activated temporarily remove the portion of the vinyl within the cutting area. Cut along the marked line on the sweep. Activate the pin and reinsert vinyl into the sweep. Excess Vinyl to be removed after closing seal is ensured.



5. Skip this step if replacing with the 13mm sweep.

- a. Place 3/16"x 1"x 4" (combining a 1/8" and 1/16" shim) setting blocks at ends and spaced along length. The setting blocks will provide a shim to keep the drop sweep to the exterior most wall.



- b. Place the new drop sweep in the bottom rail up against the exterior most wall. Place new brackets (provided) into sweep and drill (#32 drill bit) holes that aligned with brackets.



Panel shown laying flat (may be done with the panel installed)

6. With the new sweep in the bottom rail, secure the brackets at each end with (2) #6 FHP-UC Screws, use of wax is advised to reduce screw breakage. Confirm the sweep adjustment pin (located on the side of the panel) is fully closed by turning the pin clockwise.



Panel shown laying flat (may be done with the panel installed)

7. If panel is uninstalled:

- a. Confirm operation of the sweep by slowly depressing pin.
- b. Install panel, review Section X of Installation Instructions for proper panel installation.

8. After panel installation is square and aligned properly with the frame, adjust the bottom sweep pin by slowly turning the screw counter clockwise, while making adjustments close and reclose the panel until a seal forms between the finished floor and sweep (closed position). Trim any excess vinyl on sweep to ensure a proper seal at the jambs.