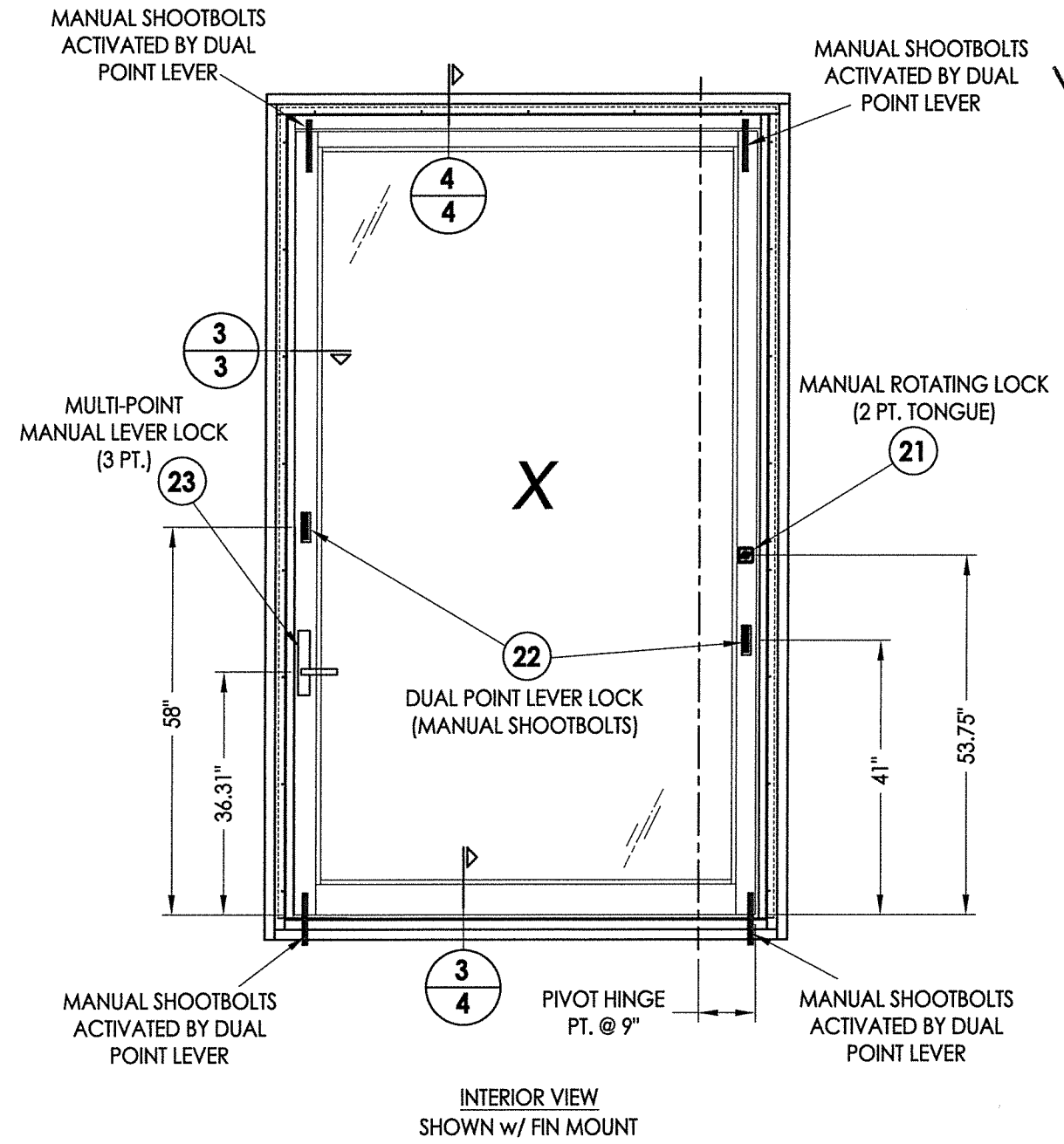
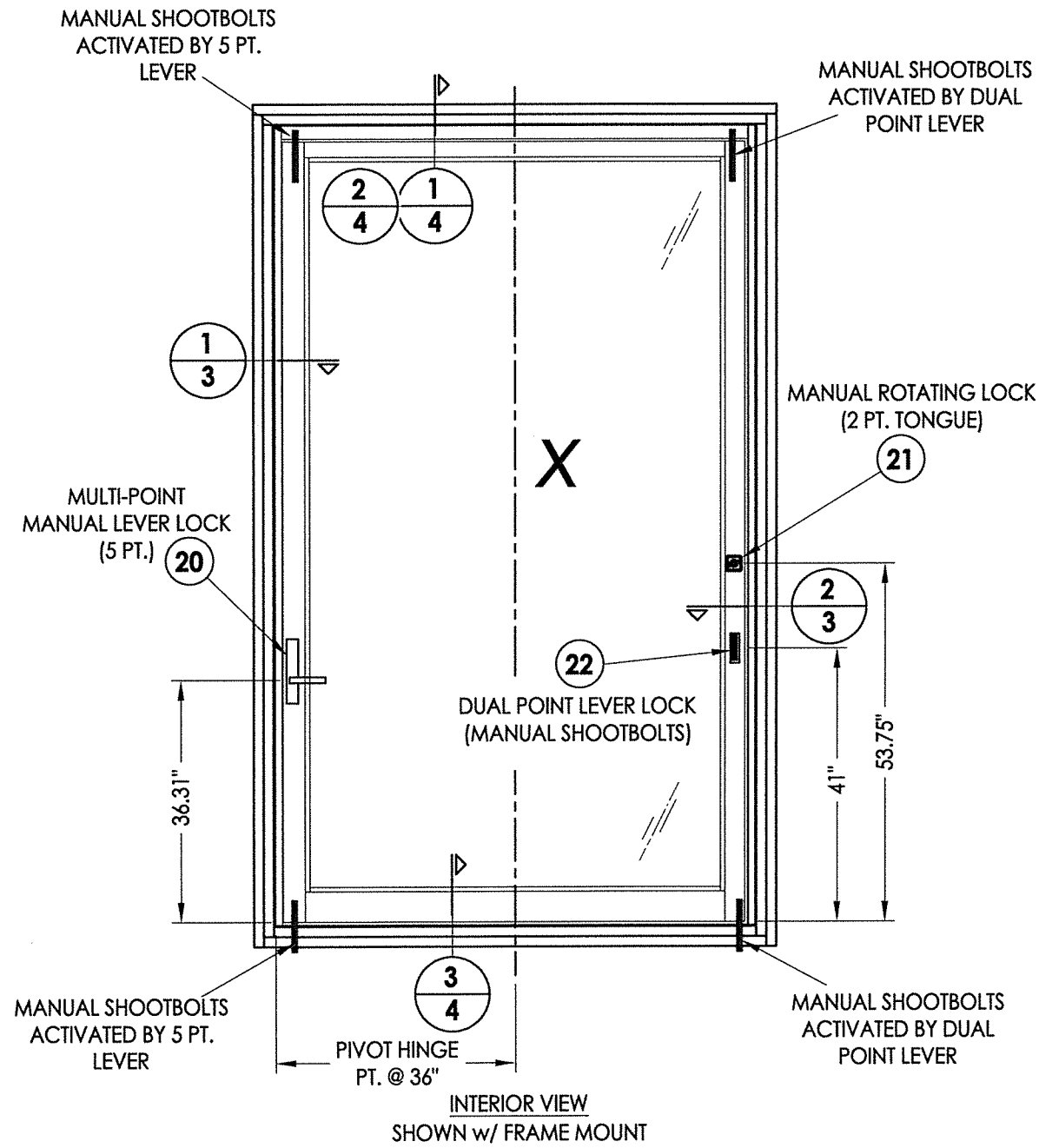


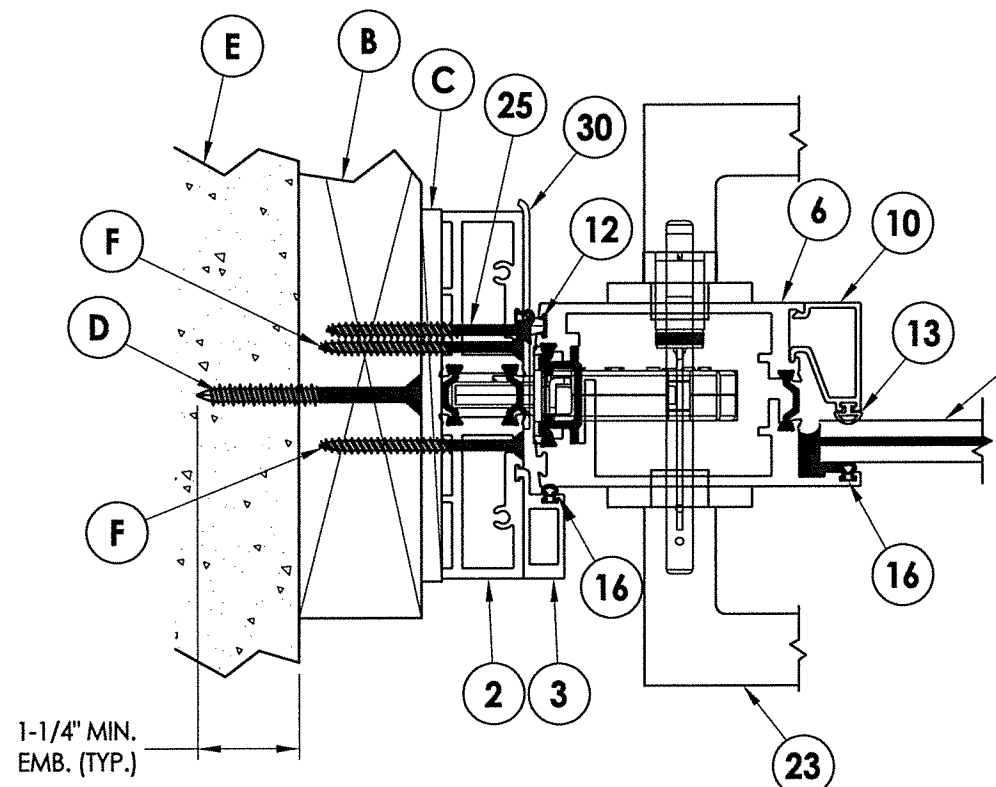
December 14, 2021  
 Documents Prepared By:  
 Lyndon F. Schmidt  
 P.E. No. 43409

*RW*  
 BUILDING CONSULTANTS, INC.  
 P.O. Box 230, Vairco, FL 33595  
 Phone No.: 813.659.9197  
 FBPE Registry No. 9813



PRODUCT:		PART OR ASSEMBLY:	
FLEETWOOD		ELEVATIONS	
SERIES 4400-T			
NO.	DATE	BY	REVISIONS
DATE: 12/08/21			
SCALE: N.T.S.			
DWG. BY: RW			
CHK. BY: LFS			
DRAWING NO.: FL-40320.1			
SHEET 2 OF 9			

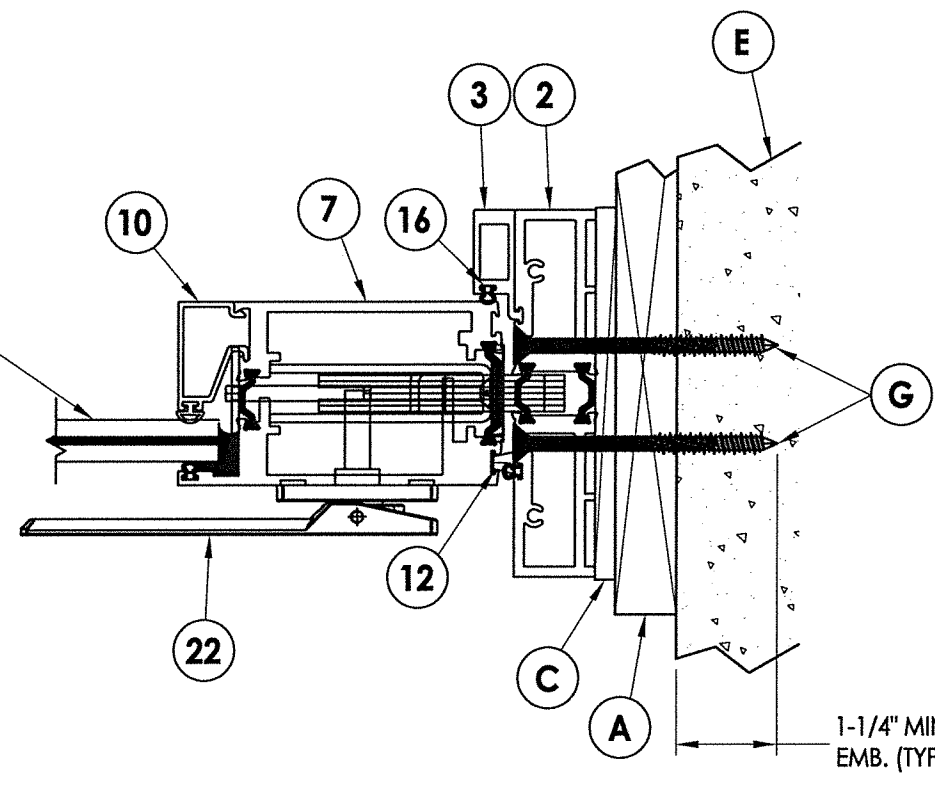
Z:\Clients\Fleetwood PERMANENT\A - Florida Product Approvals\FL-40320 Pivot Door\C - Drawings\FL-40320.1.dwg



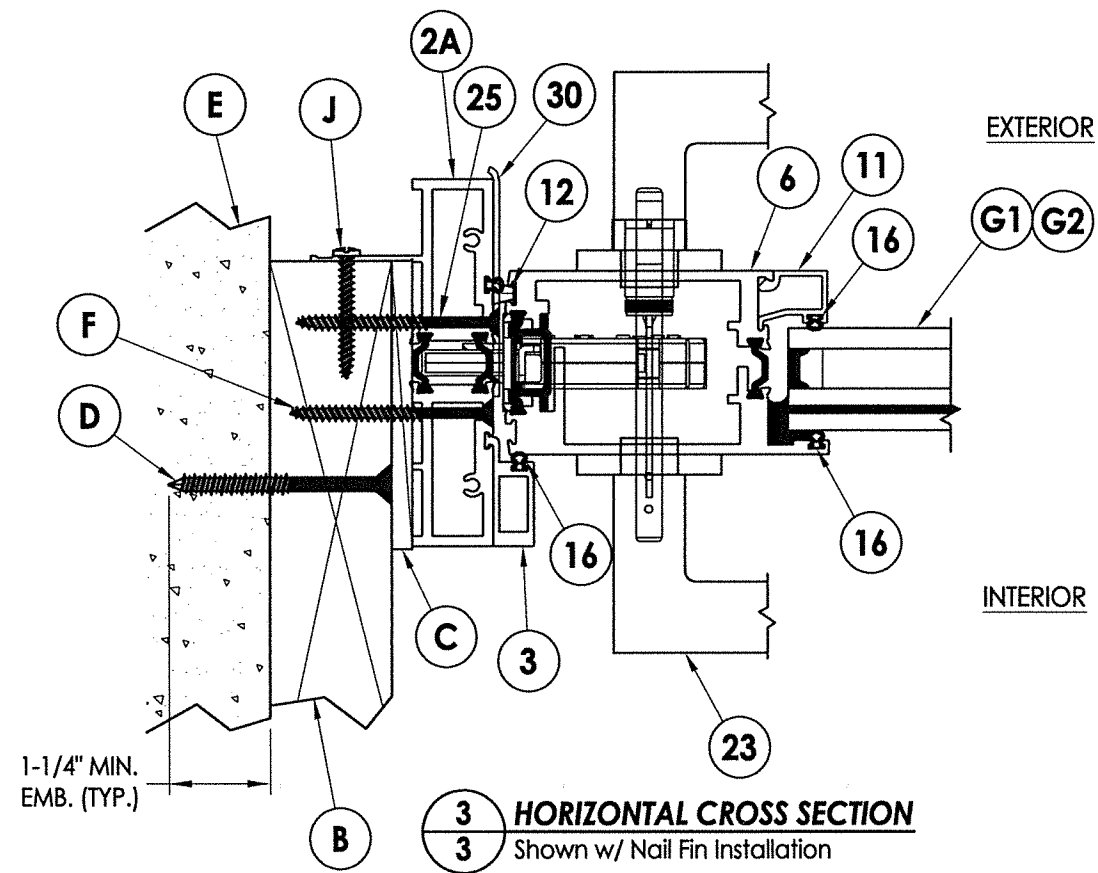
**1 HORIZONTAL CROSS SECTION**  
**3 2X Buck Construction**

EXTERIOR

INTERIOR



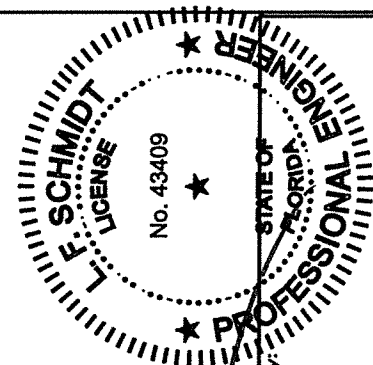
**2 HORIZONTAL CROSS SECTION**  
**3 1X Buck Construction**



**3 HORIZONTAL CROSS SECTION**  
**3 Shown w/ Nail Fin Installation**

EXTERIOR

INTERIOR



*LFS*

December 14, 2021

Documents Prepared By:

Lyndon F. Schmidt

P.E. No. 43409

RW BUILDING CONSULTANTS, INC.

P.O. Box 230, Vairico, FL 33595

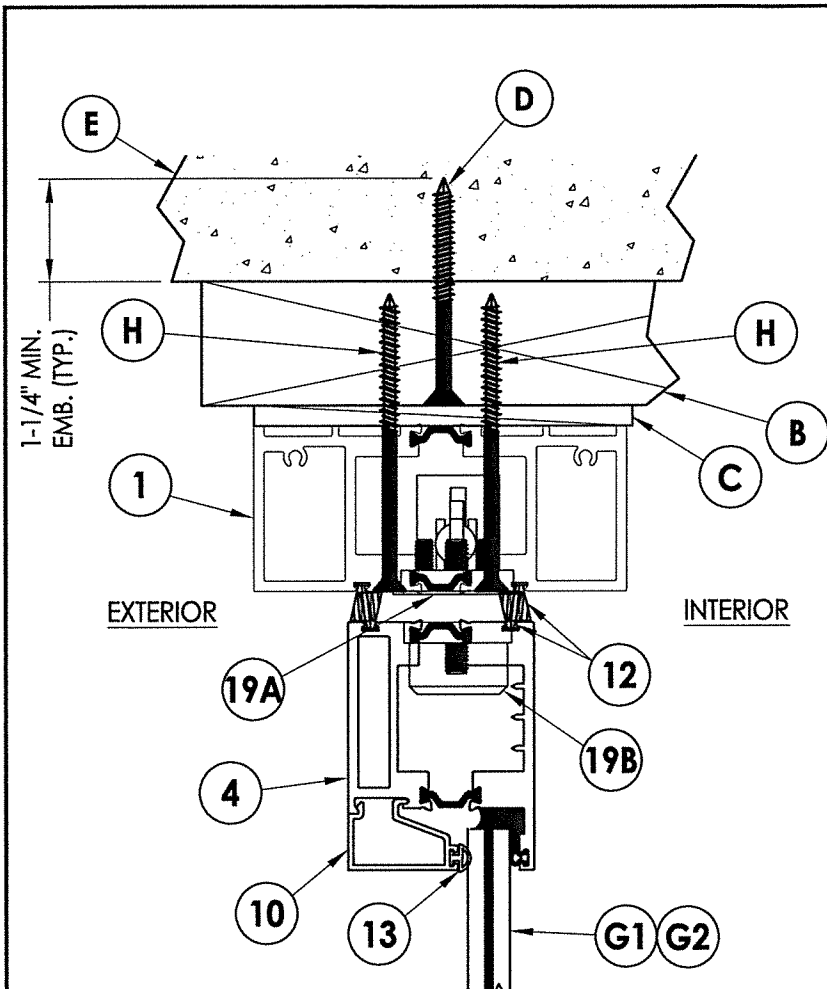
Phone No.: 813.659.9197

FBPE Registry No. 9813

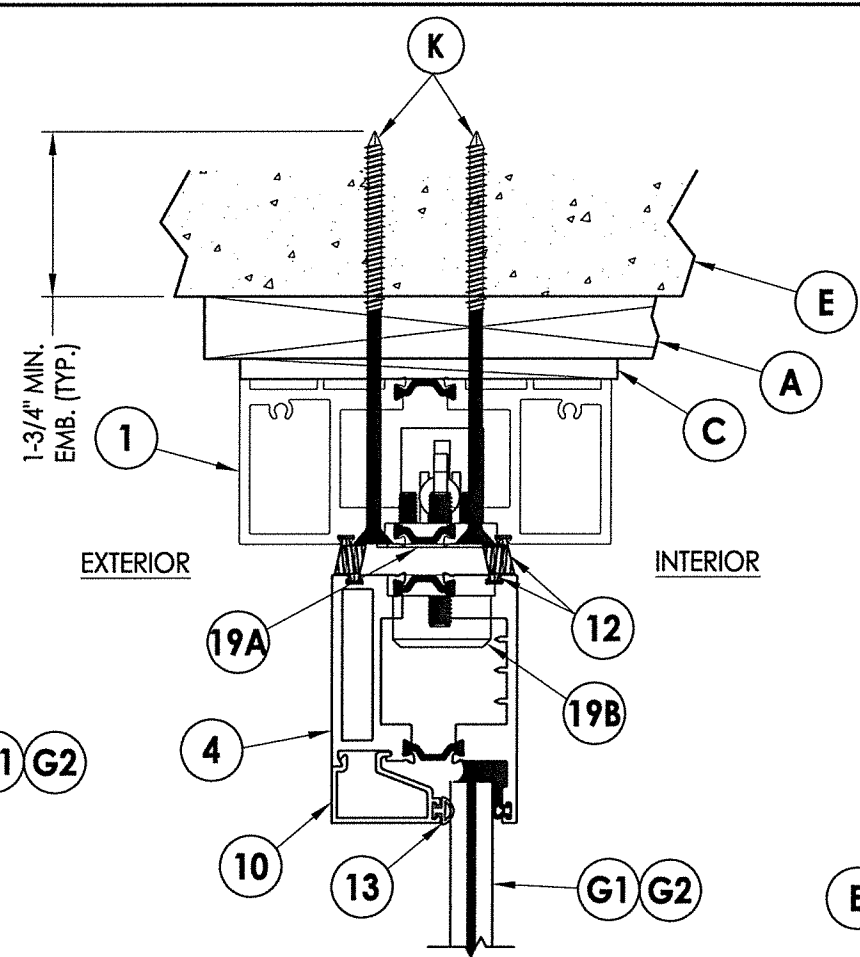
PRODUCT:	FLEETWOOD SERIES 4400-T
PART OR ASSEMBLY:	HORIZONTAL CROSS SECTIONS

NO.	DATE	BY	REVISIONS

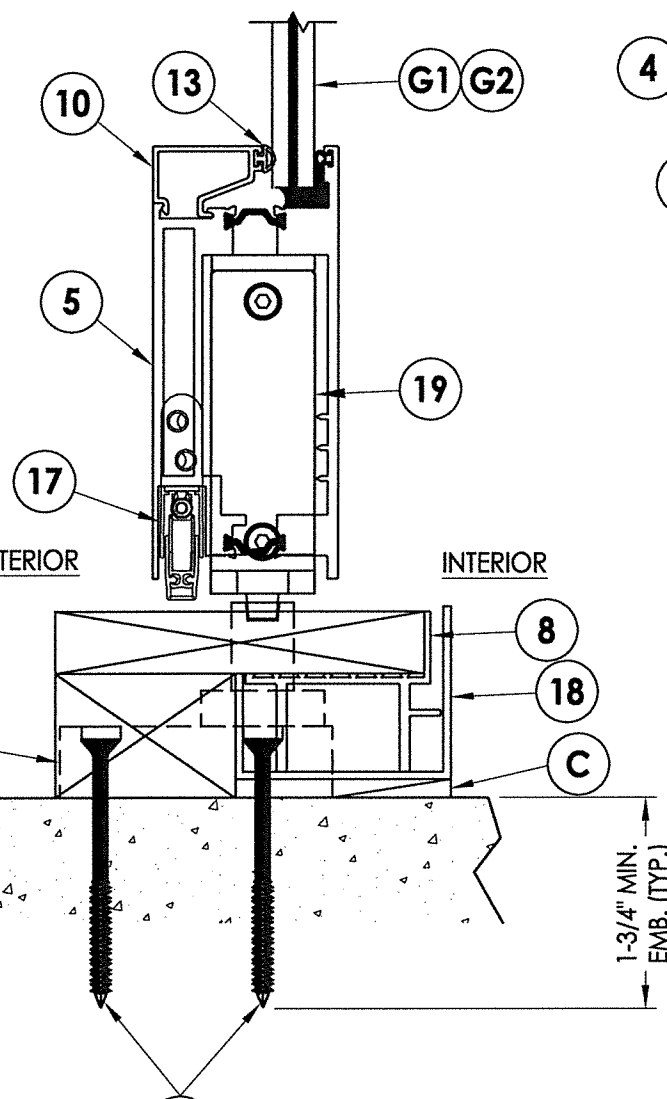
DATE:	12/08/21
SCALE:	N.T.S.
DWG. BY:	RW
CHK. BY:	LFS
DRAWING NO.:	FL-40320.1
SHEET	3 OF 9



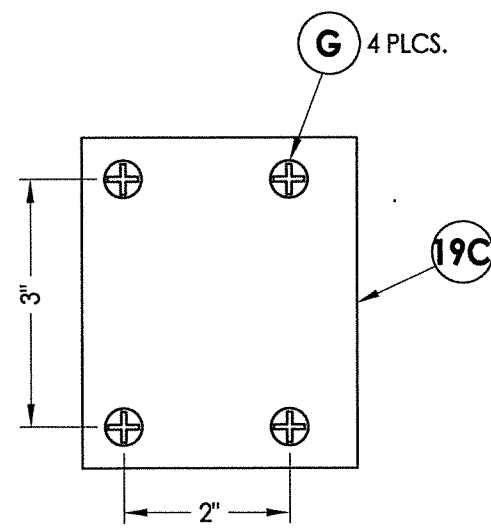
1 **VERTICAL CROSS SECTION**  
4 2X Buck Construction



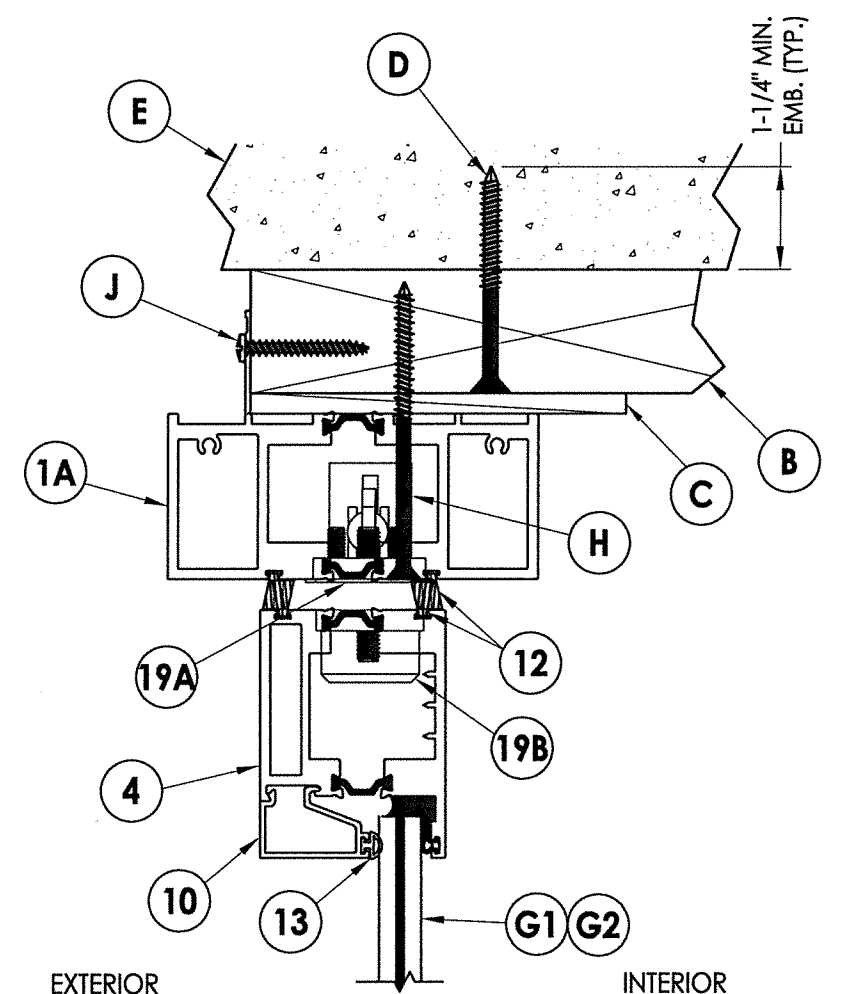
2 **VERTICAL CROSS SECTION**  
4 1X Buck Construction



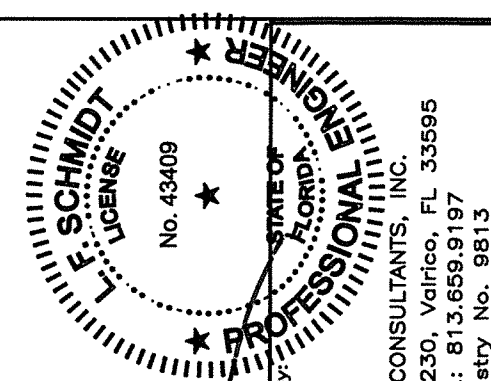
3 **VERTICAL CROSS SECTION**  
4



PIVOT HINGE FLOOR PLATE PLAN VIEW

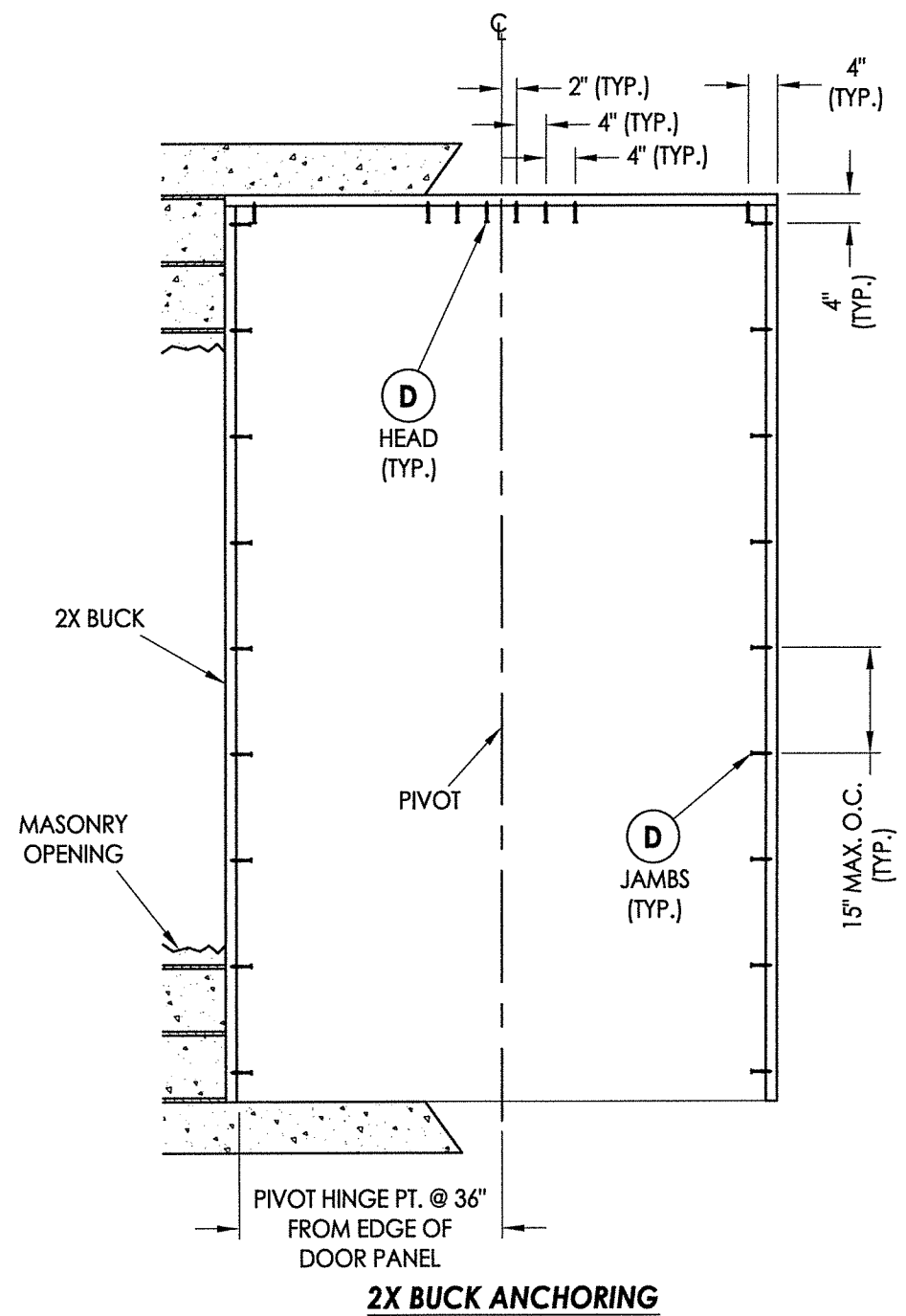


4 **VERTICAL CROSS SECTION**  
4 Shown w/ Nail Fin Installation

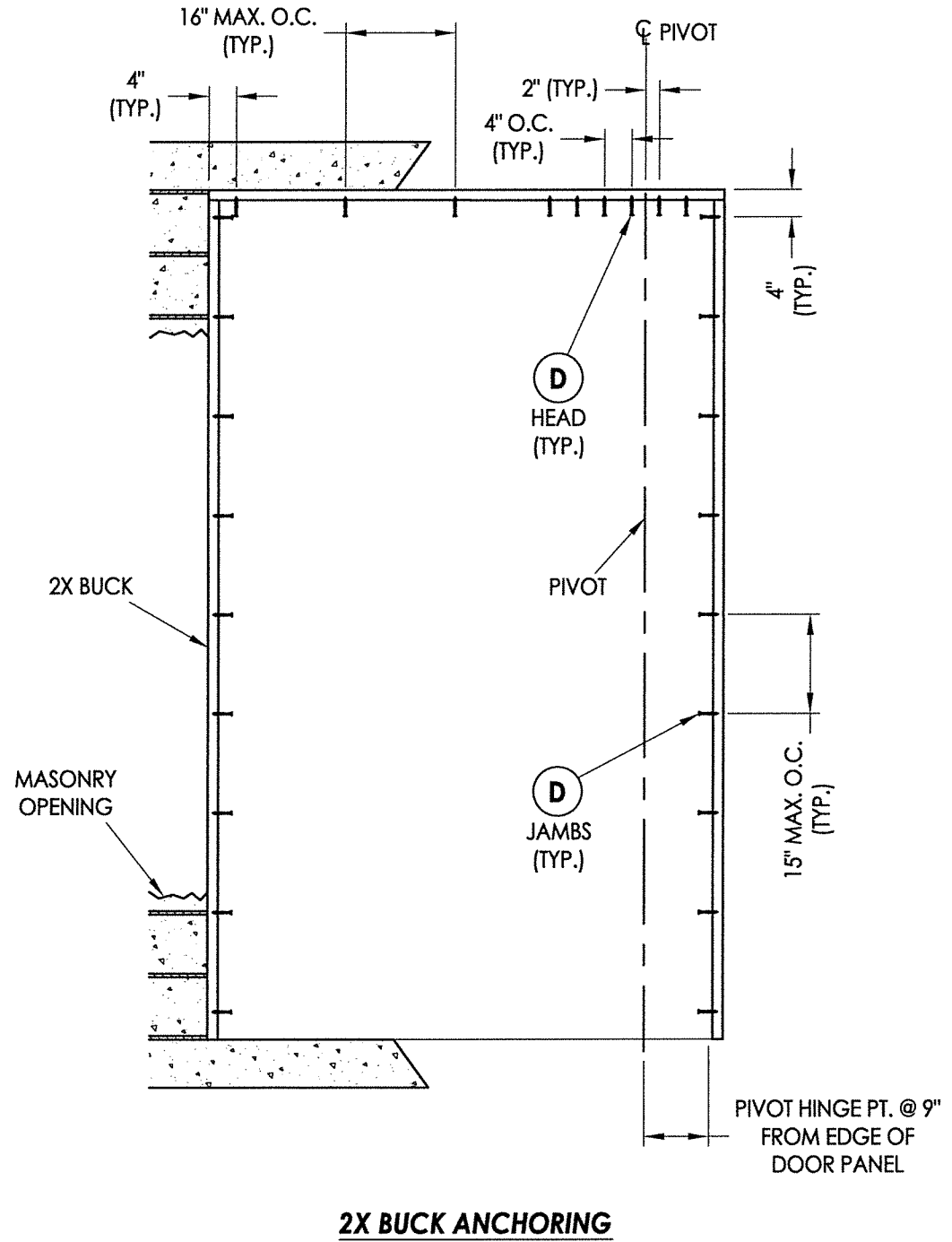


December 14, 2021  
 Documents Prepared By:  
 Lyndon F. Schmidt  
 P.E. No. 43409  
*LFS*  
*RW*  
 BUILDING CONSULTANTS, INC.  
 P.O. Box 230, Vairico, FL 33595  
 Phone No.: 813.659.9197  
 FBPE Registry No. 9813

PRODUCT:	FLEETWOOD	
PART OR ASSEMBLY:	SERIES 4400-T	
VERTICAL CROSS SECTIONS		
NO.	DATE	BY
DATE:	12/08/21	
SCALE:	N.T.S.	
DWG. BY:	RW	
CHK. BY:	LFS	
DRAWING NO.:	FL-40320.1	
SHEET	4 of 9	



**2X BUCK ANCHORING**

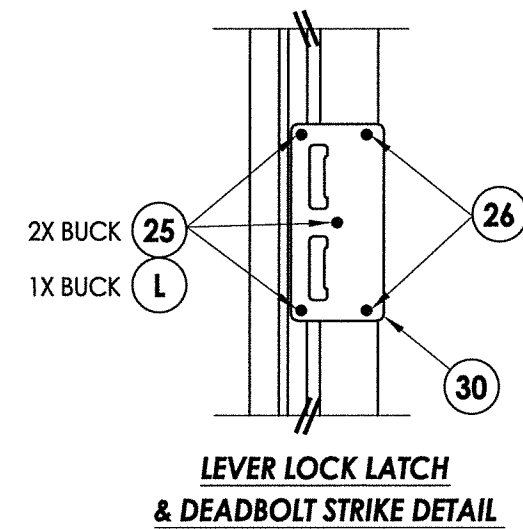
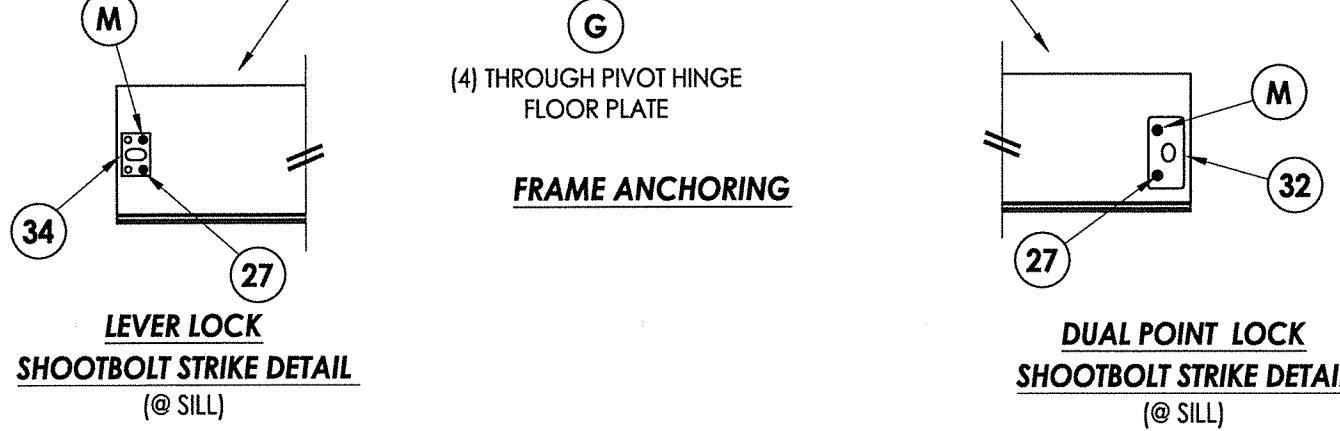
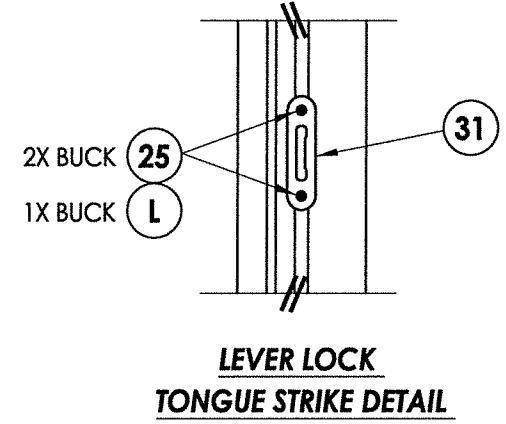
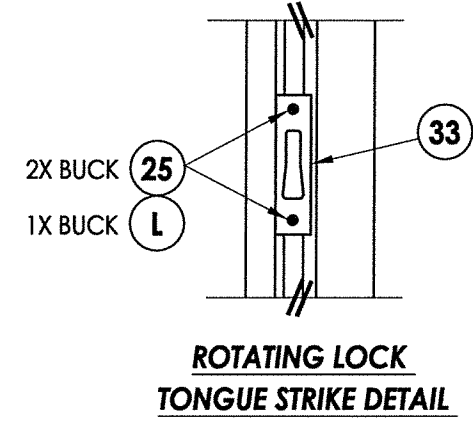
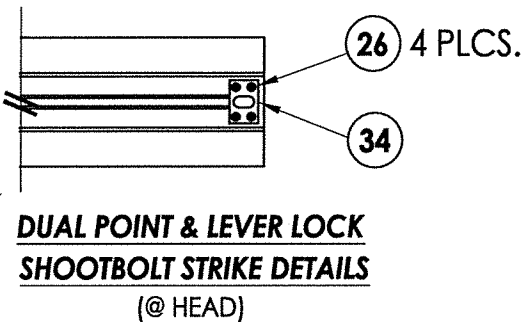
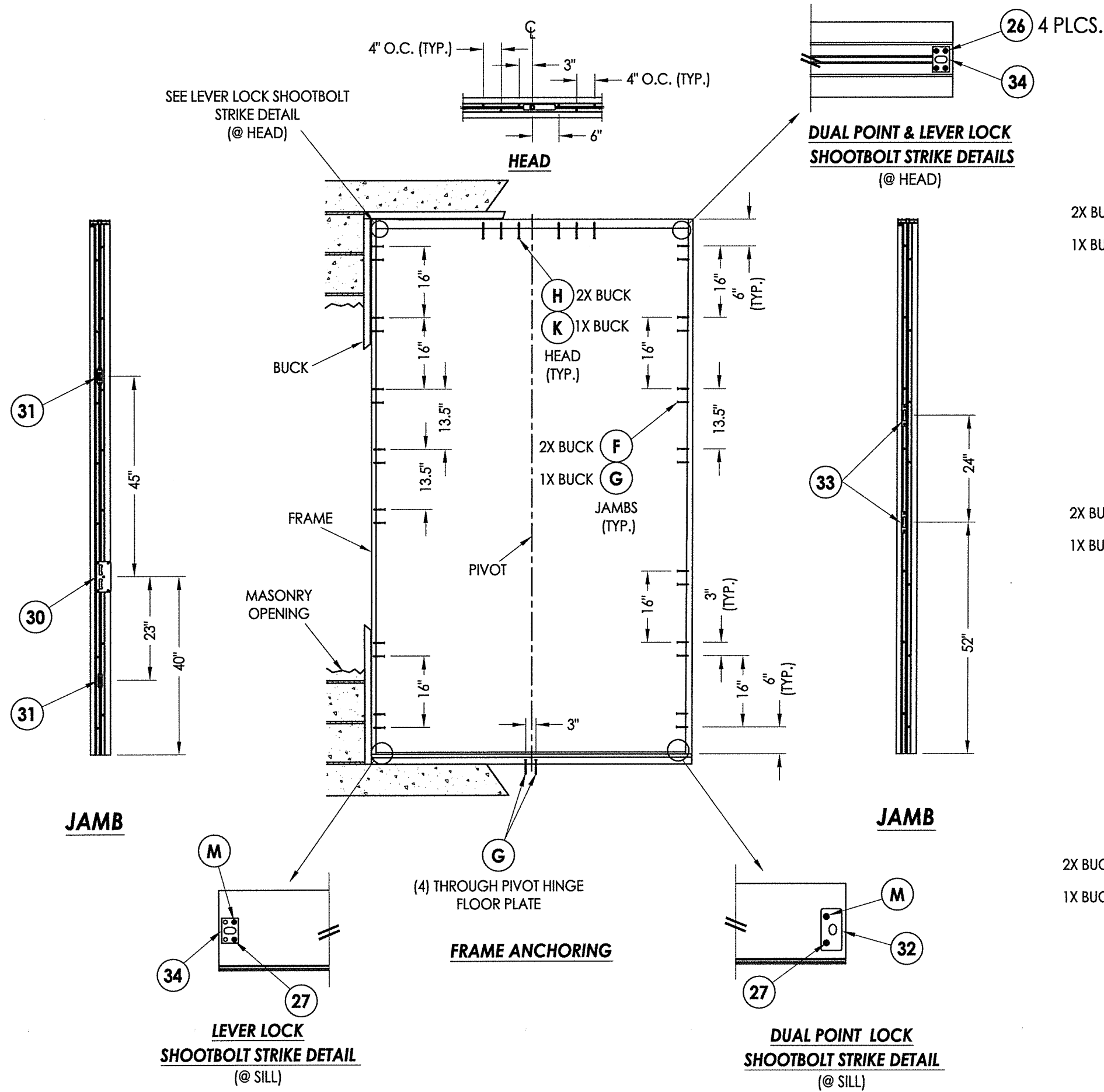


**2X BUCK ANCHORING**

*LFS*  
 December 14, 2021  
 Documents Prepared By:  
 Lyndon F. Schmidt  
 P.E. No. 43409

*RW*  
 BUILDING CONSULTANTS, INC.  
 P.O. Box 230, Valrico, FL 33595  
 Phone No.: 813.659.9197  
 FBPE Registry No. 9813

PRODUCT:	FLEETWOOD SERIES 4400-T	
PART OR ASSEMBLY:	BUCK ANCHORING	
NO.	DATE	BY
REVISIONS		
DATE:	12/08/21	
SCALE:	N.T.S.	
DWG. BY:	RW	
CHK. BY:	LFS	
DRAWING NO.:	FL-40320.1	
SHEET	5 OF 9	



December 14, 2021  
Documents Prepared By: Lyndon F. Schmidt  
P.E. No. 43409

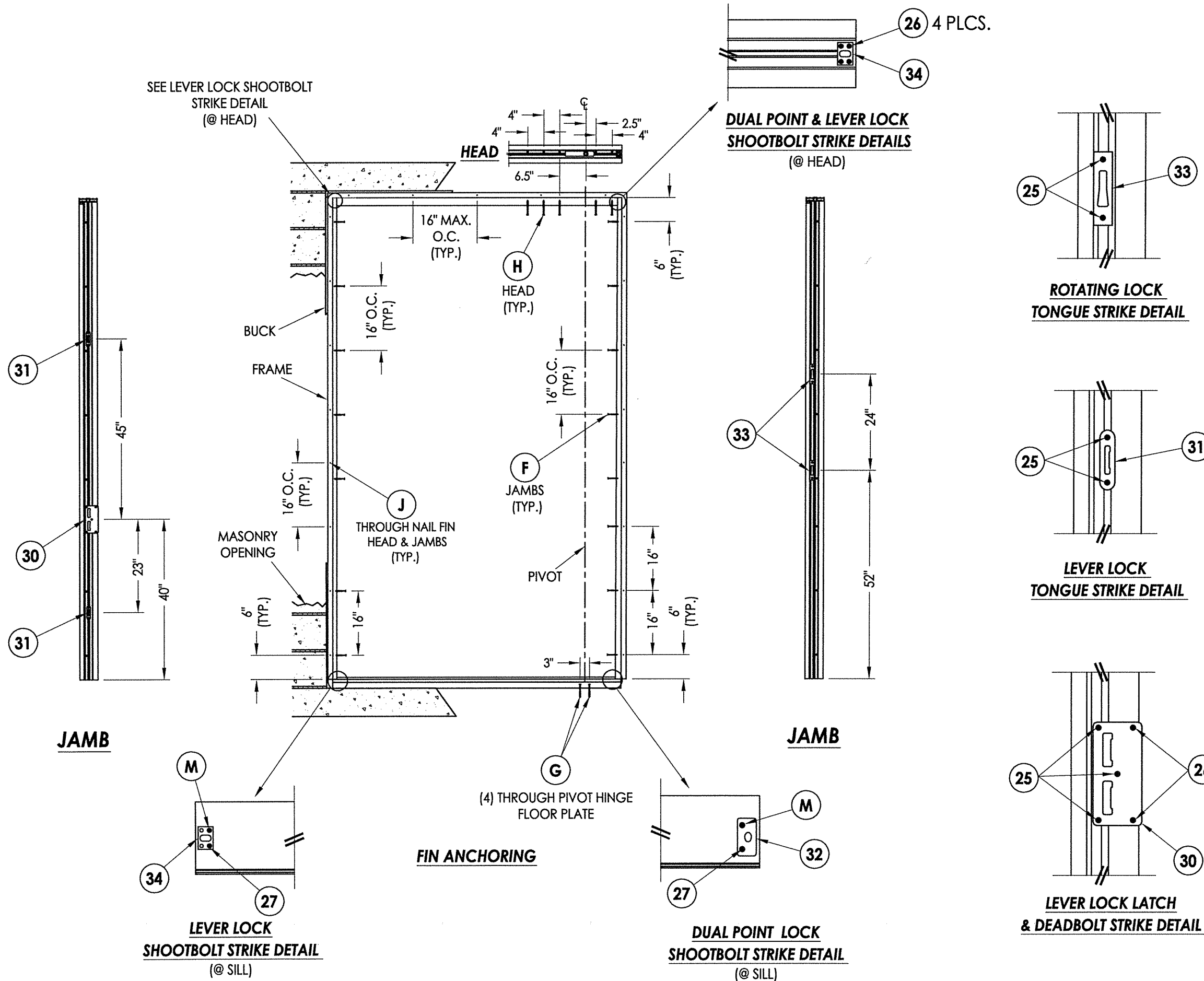
**L.F. SCHMIDT**  
FLORIDA PROFESSIONAL ENGINEER  
No. 43409

**R.W.**  
BUILDING CONSULTANTS, INC.  
P.O. Box 230, Valrico, FL 33595  
Phone No.: 813.659.9197  
FBPE Registry No. 9813

**PRODUCT:** FLEETWOOD SERIES 4400-T  
**PART OR ASSEMBLY:** FRAME ANCHORING

NO.	DATE	BY	REVISIONS

DATE: 12/08/21  
SCALE: N.T.S.  
DWG. BY: RW  
CHK. BY: LFS  
DRAWING NO.: FL-40320.1  
SHEET 6 OF 9



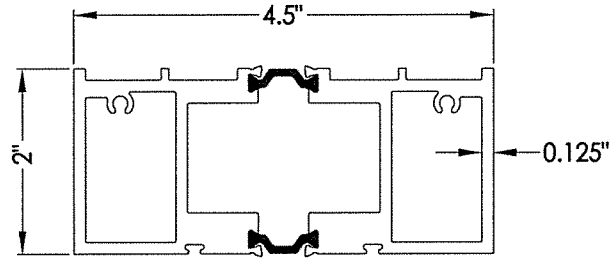
**FLORIDA**  
**PROFESSIONAL ENGINEER**  
 F. SCHMIDT  
 LICENSE No. 43409

December 14, 2021  
 Documents Prepared By:  
 Lyndon F. Schmidt  
 P.E. No. 4-3409

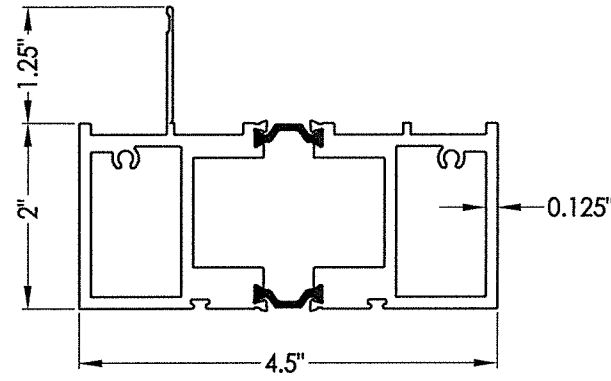
**RW**  
 BUILDING CONSULTANTS, INC.  
 P.O. Box 230, Valrico, FL 33595  
 Phone No.: 813.659.9197  
 FBPE Registry No. 9813

<b>REVISIONS</b>	
NO.	DATE
BY	
PART OR ASSEMBLY:	
FIN ANCHORING	
SERIES 4400-T	
FLEETWOOD	
PRODUCT:	

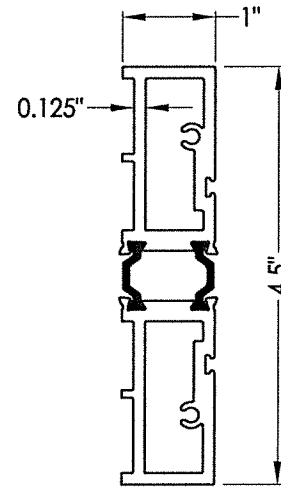
DATE:	12/08/21
SCALE:	N.T.S.
DWG. BY:	RW
CHK. BY:	LFS
DRAWING NO.:	FL-40320.1
SHEET	7 OF 9



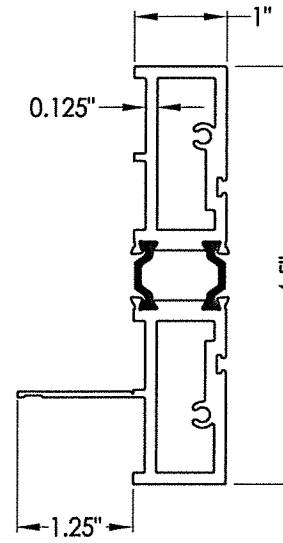
**1 HEAD**



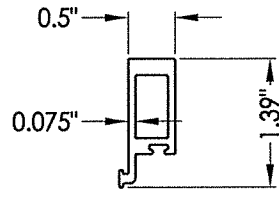
**1A HEAD w/ FIN**



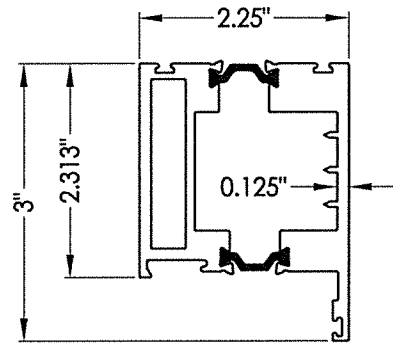
**2 JAMB**



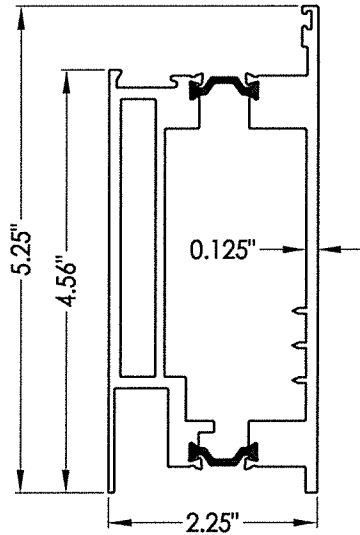
**2A JAMB w/ FIN**



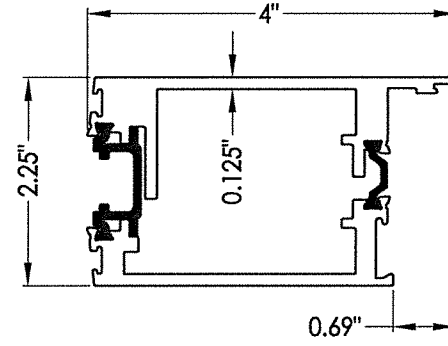
**3 PANEL STOP**



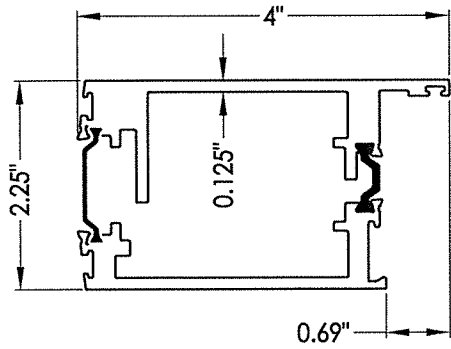
**4 TOP RAIL**



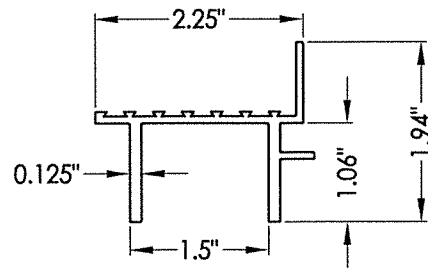
**5 BOTTOM RAIL**



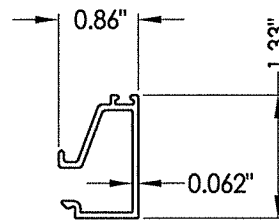
**6 MULTI-POINT LOCK STILE**



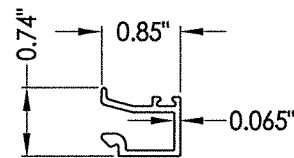
**7 ARCHETYPE LOCK STILE**



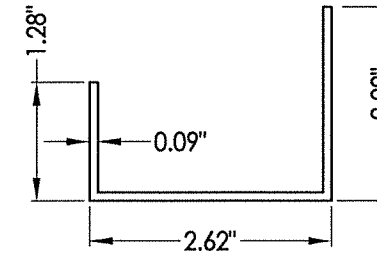
**8 SUB SILL**



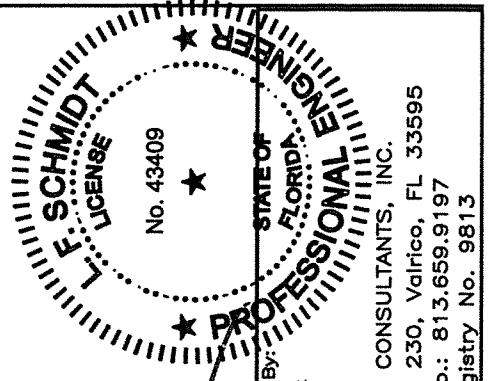
**10 GLASS STOP 9/16"**



**11 GLASS STOP 1-1/4"**



**18 SILL PAN**



*[Signature]*

December 14, 2021  
 Documents Prepared By:  
 Lyndon F. Schmidt  
 P.E. No. 43409

**RW** BUILDING CONSULTANTS, INC.  
 P.O. Box 230, Valrico, FL 33595  
 Phone No.: 813.659.9197  
 FBPE Registry No. 9813

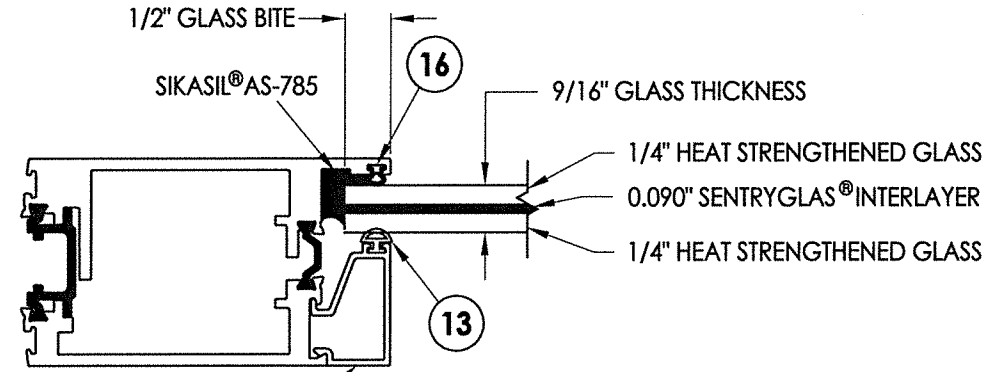
PRODUCT:		FLEETWOOD
		SERIES 4400-T
PART OR ASSEMBLY:		COMPONENTS
NO.	DATE	BY
REVISIONS		
DATE:	12/08/21	
SCALE:	N.T.S.	
DWG. BY:	RW	
CHK. BY:	LFS	
DRAWING NO.:	FL-40320.1	
SHEET	8	OF 9



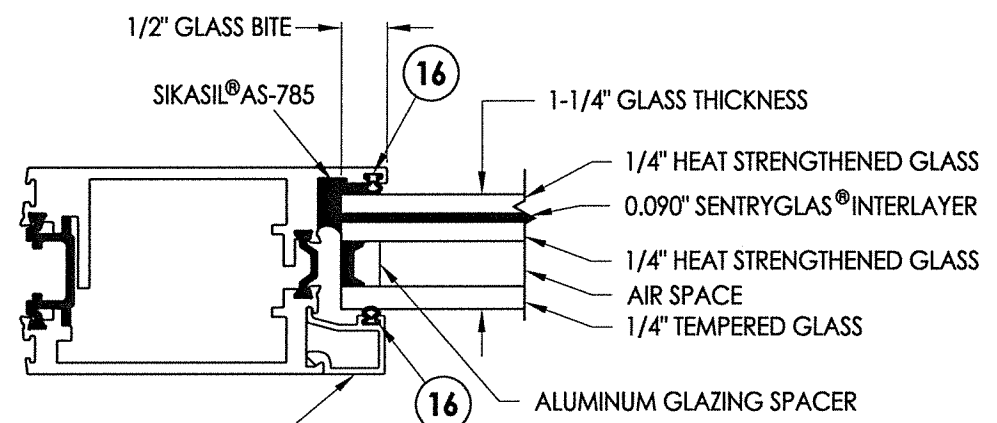
Z:\Clients\Fleetwood PERMANENTA - Florida Product Approvals\FL-40320 Pivot Door\C - Drawings\FL-40320.1.dwg

**BILL OF MATERIALS**

ITEM #	DESCRIPTION	MATERIAL
A	1X BUCK (SG >= 0.55)	WOOD
B	2X BUCK (SG >= 0.55)	WOOD
C	1/4" MAX. SHIM SPACE	-
D	1/4" X 2-3/4" FH DeWALT CONCRETE SCREW (1-1/4" MIN. EMBEDMENT)	STEEL
E	MASONRY - 3,000 PSI MIN. CONCRETE CONFORMING TO ACI 301 OR HOLLOW BLOCK CONFORMING TO ASTM C90	CONCRETE
F	#10 X 2-1/2" FH WOOD SCREW (1-1/4" MIN. EMBEDMENT)	STEEL
G	1/4" X 3-1/4" FH DeWALT CONCRETE SCREW (1-3/4" MIN. EMBEDMENT)	STEEL
H	#10 X 3-1/2" FH WOOD SCREW (1-3/8" MIN. EMBEDMENT)	STEEL
J	#8 X 1-1/2" PH SMS (1-3/8" MIN. EMBEDMENT)	STEEL
K	1/4" X 5" FH DeWALT CONCRETE SCREW (1-3/4" MIN. EMBEDMENT)	STEEL
L	3/16" X 3-1/4" FH DeWALT CONCRETE SCREW (1-1/4" MIN. EMBEDMENT)	STEEL
M	3/16" FH DeWALT CONCRETE SCREW (1-3/4" MIN. EMBEDMENT)	STEEL
1	HEAD	6063-T6 ALUM
1A	HEAD w/ FIN	6063-T6 ALUM
2	JAMB	6063-T6 ALUM
2A	JAMB w/ FIN	6063-T6 ALUM
3	PANEL STOP	6063-T6 ALUM
4	TOP RAIL	6063-T6 ALUM
5	BOTTOM RAIL	6063-T6 ALUM
6	MULTI-POINT LOCK STILE	6063-T6 ALUM
7	ARCHETYPE LOCK STILE	6063-T6 ALUM
8	SUB SILL	6063-T6 ALUM
10	GLASS STOP (9/16")	6063-T6 ALUM
11	GLASS STOP (1-1/4")	6063-T6 ALUM
12	FIN SEAL MOHAIR - AMESBURY	MOHAIR
13	LARGE BULB VINYL (EPDM 70 DUROMETER) - TREMCO	VINYL
16	MINI BULB VINYL (EPDM 70 DUROMETER) - TREMCO	VINYL
17	DROP DOWN SEAL	-
18	SILL PAN	-
19	FRITSJURGENS SYSTEM M PIVOT HINGE	-
19A	PIVOT HINGE CEILING PLATE	-
19B	PIVOT HINGE TOP PIVOT	-
19C	PIVOT HINGE FLOOR PLATE	-
21	MANUAL ROTATING LOCK (2 PT. TONGUE)	-
22	DUAL POINT LEVER ACTIVATED MANUAL LOCK (2 PT. SHOOTBOLTS)	-
23	MULTI-POINT MANUAL LEVER LOCK (3 PT.)	-
25	#8 X 2-1/2" PFH WOOD SCREW (1-3/16" MIN. EMBEDMENT)	STEEL
26	#8 X 1/2" PFH SMS	STEEL
27	#8 X 1" PFH SMS	STEEL
30	LEVER LOCK LATCH & DEADBOLT STRIKE PLATE	STEEL
31	LEVER LOCK TONGUE STRIKE PLATE	STEEL
33	ROTATING LOCK TONGUE STRIKE PLATE	STEEL
34	DUAL POINT SHOOTBOLT STRIKE PLATE	STEEL



**G1 GLAZING DETAIL**



**G2 GLAZING DETAIL**

**CONCRETE ANCHOR NOTES:**

- Concrete anchor locations at the corners may be adjusted to maintain the min. edge distance to mortar joints.
- Concrete anchor locations noted as "MAX. ON CENTER" must be adjusted to maintain the min. edge distance to mortar joints, additional concrete anchors may be required to ensure the "MAX. ON CENTER" dimension are not exceeded.
- Concrete anchor table:

ANCHOR TYPE	ANCHOR SIZE	MIN. EMBEDMENT (AS SHOWN)	MIN. CLEARANCE TO MASONRY EDGE	MIN. CLEARANCE TO ADJACENT ANCHOR
DeWALT ULTRACON+	3/16"	1-1/4"	2-1/2"	1-1/2"
	1/4"	1-1/4" - 1-3/4"	2-1/2"	2"

**WOOD SCREW INSTALLATION NOTES:**

- Maintain a minimum 5/8" edge distance, 1" end distance, & 1" o.c. spacing of wood screws to prevent the splitting of wood.

December 14, 2021  
 Documents Prepared By: Lyndon F. Schmidt  
 P.E. No. 43409

**RW**  
 BUILDING CONSULTANTS, INC.  
 P.O. Box 230, Valrico, FL 33595  
 Phone No.: 813.659.9197  
 FBPE Registry No. 9813

PRODUCT:	FLEETWOOD
SERIES	4400-T
PART OR ASSEMBLY:	BILL OF MATERIALS & GLAZING DETAILS
NO.	DATE
BY	REVISIONS
DATE:	12/08/21
SCALE:	N.T.S.
DWG. BY:	RW
CHK. BY:	LFS
DRAWING NO.:	FL-40320.1
SHEET	9 OF 9