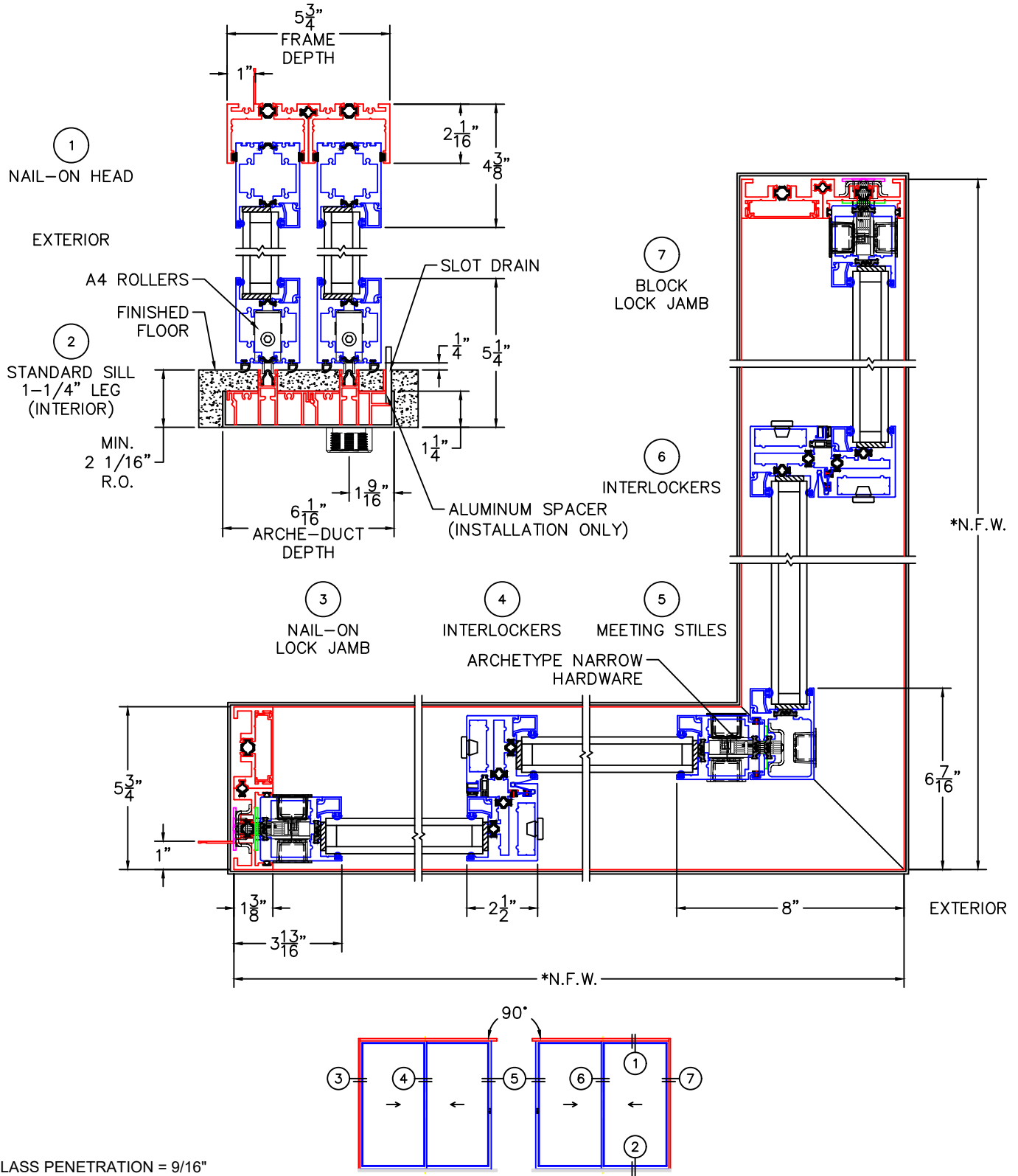




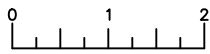
(USE ENGINEER'S SCALE TO SCALE DIMENSIONS IN INCHES)

SCALE: 1/5

## 90° XXVXX OUTSIDE CORNER DOOR DETAILS 1-1/4" INSULATED GLAZING SHOWN (9/16" SINGLE & 1-1/2" I.G. AVAILABLE)



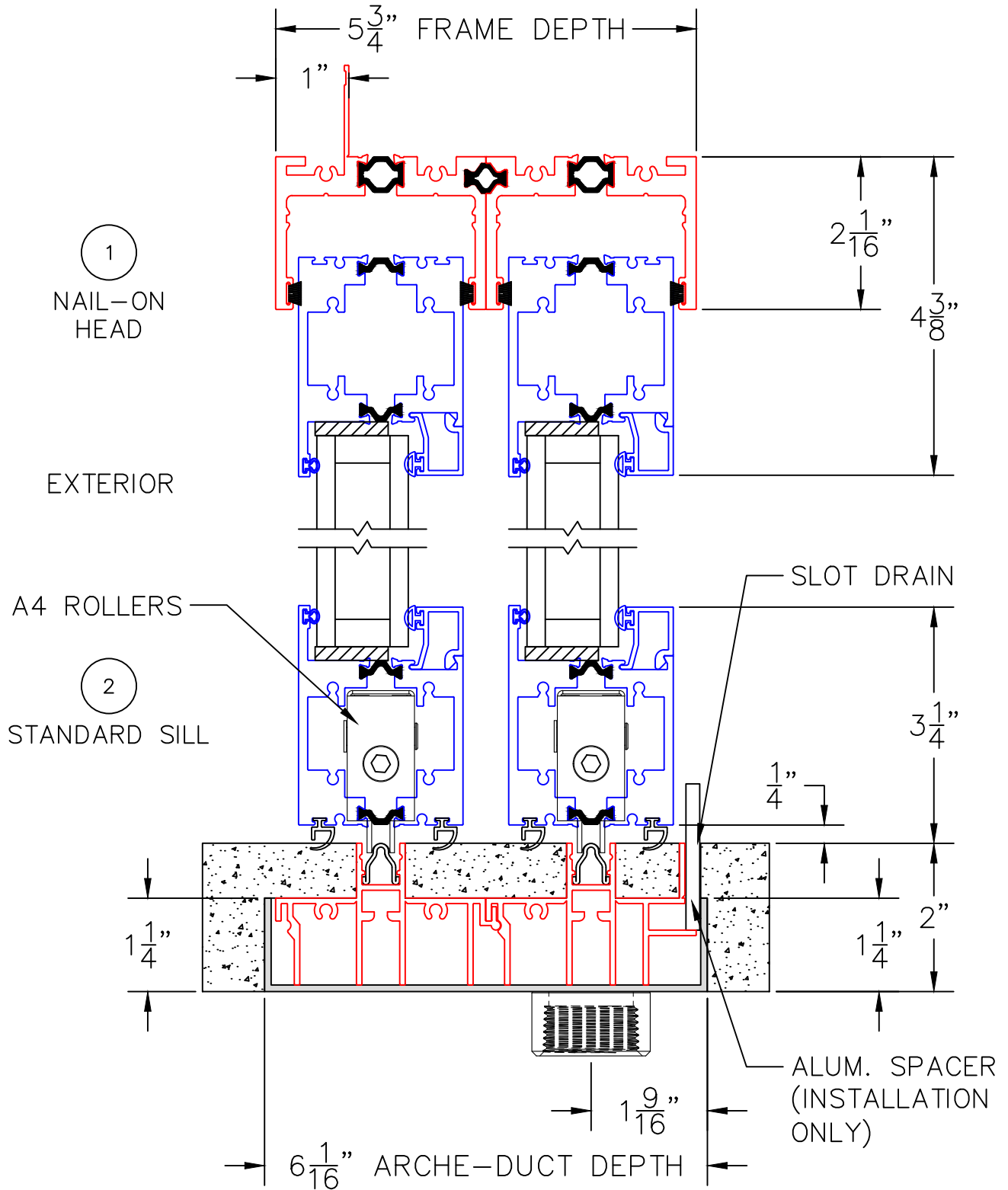
- GLASS PENETRATION = 9/16"
- NET FRAME HEIGHT INCLUDES ARCHE-DUCT.
- \*NET FRAME WIDTH DOES NOT INCLUDE ARCHE-DUCT.
- ARCHE-DUCT EXTENDS 1/4" BEYOND EACH JAMB.
- OPTIONAL SIDE DRAINS AVAILABLE.

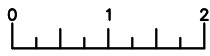


(USE RULER TO SCALE DIMENSIONS IN INCHES)

SCALE: 1/2

90° XXVXX OUTSIDE CORNER DOOR DETAILS  
1-1/4" INSULATED GLAZING SHOWN





(USE RULER TO SCALE DIMENSIONS IN INCHES)

SCALE: 1/2

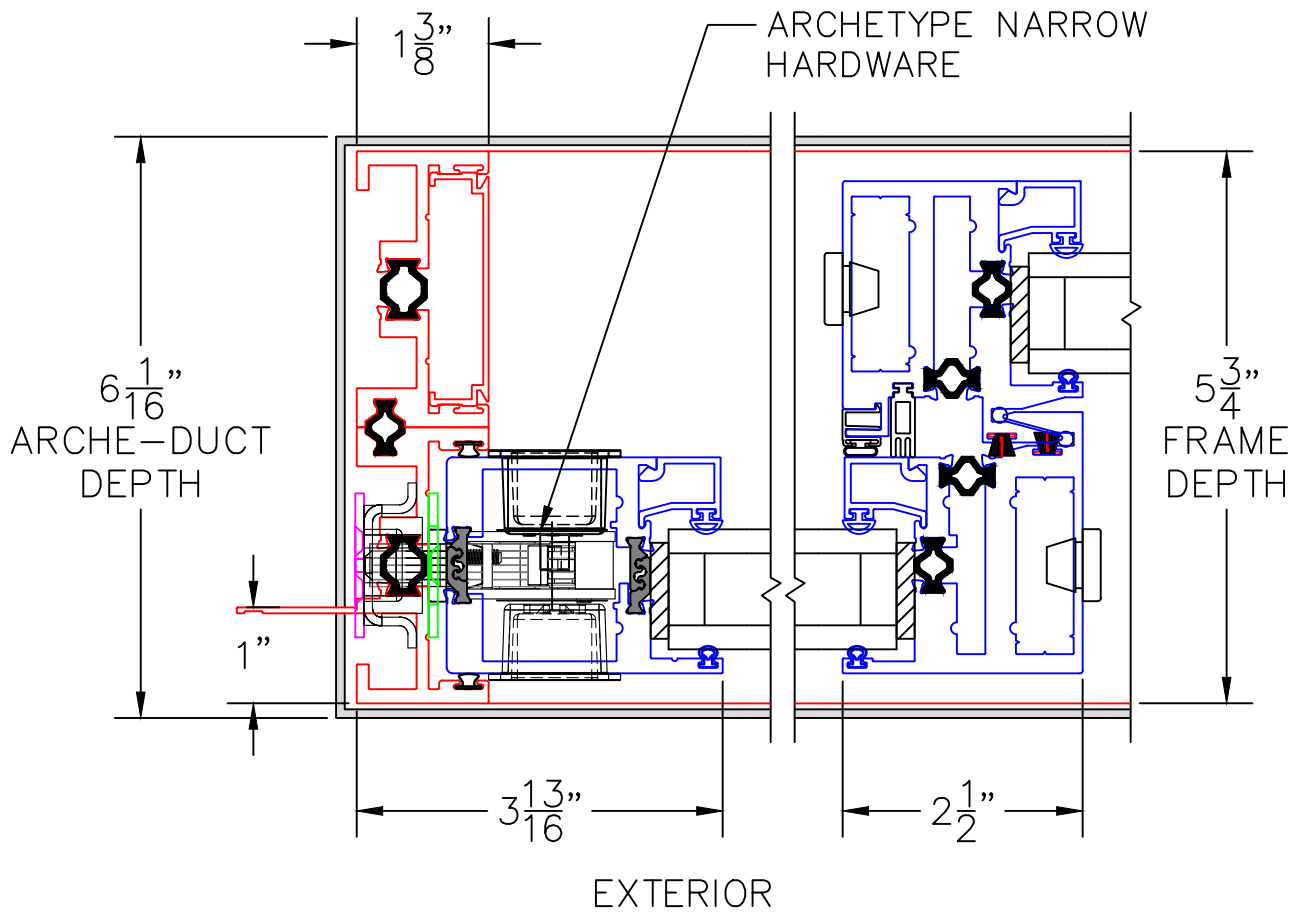
90° XXVXX OUTSIDE CORNER DOOR DETAILS  
1-1/4" INSULATED GLAZING SHOWN

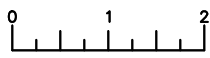
3

NAIL-ON  
LOCK JAMB

4

INTERLOCKERS





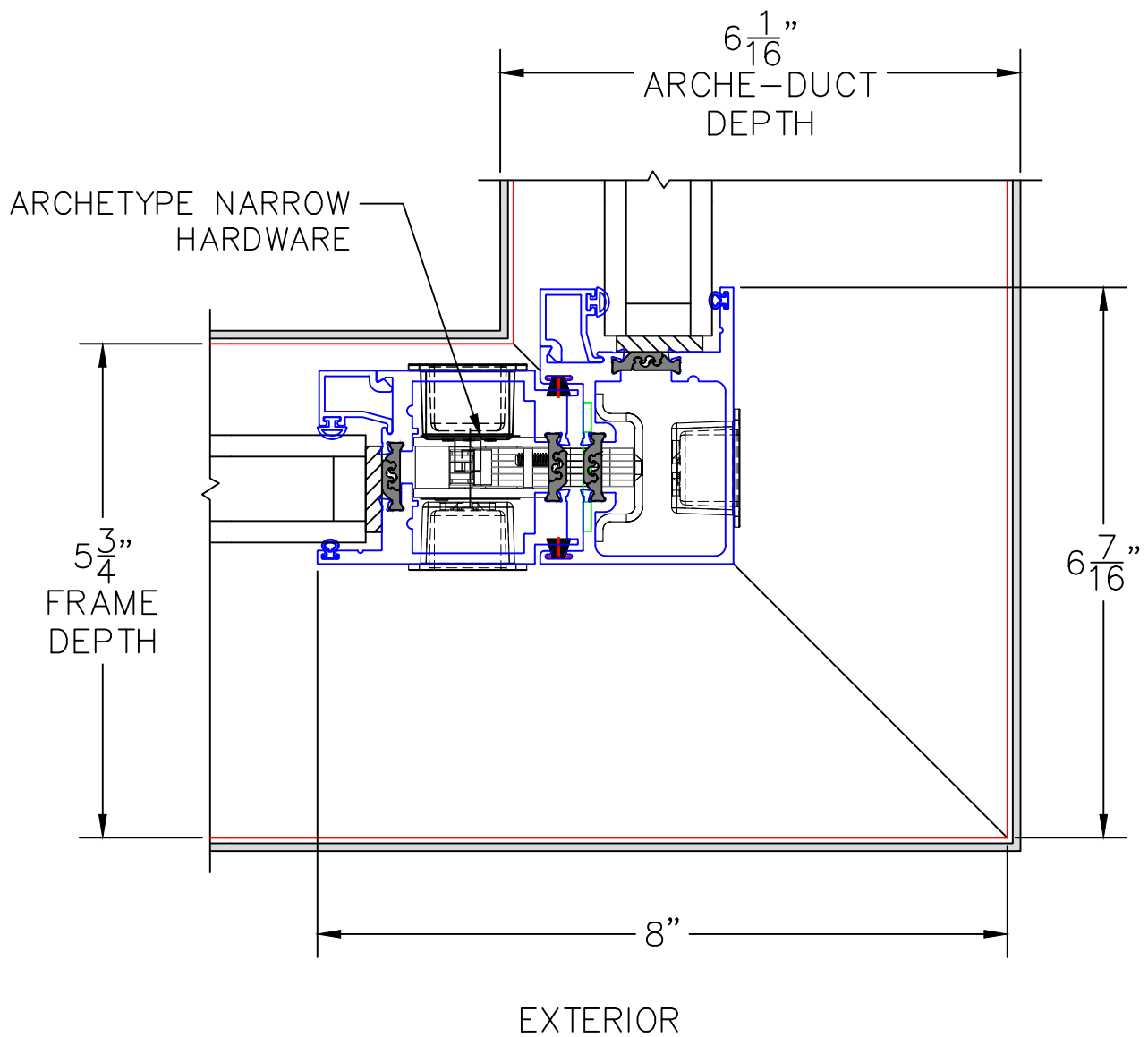
(USE RULER TO SCALE DIMENSIONS IN INCHES)

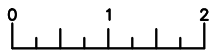
SCALE: 1/2

90° XXVXX OUTSIDE CORNER DOOR DETAILS  
1-1/4" INSULATED GLAZING SHOWN

5

90° MEETING STILES  
(ACTIVE LEFT SHOWN)





(USE RULER TO SCALE DIMENSIONS IN INCHES)

SCALE: 1/2

90° XXVXX OUTSIDE CORNER DOOR DETAILS  
1-1/4" INSULATED GLAZING SHOWN

