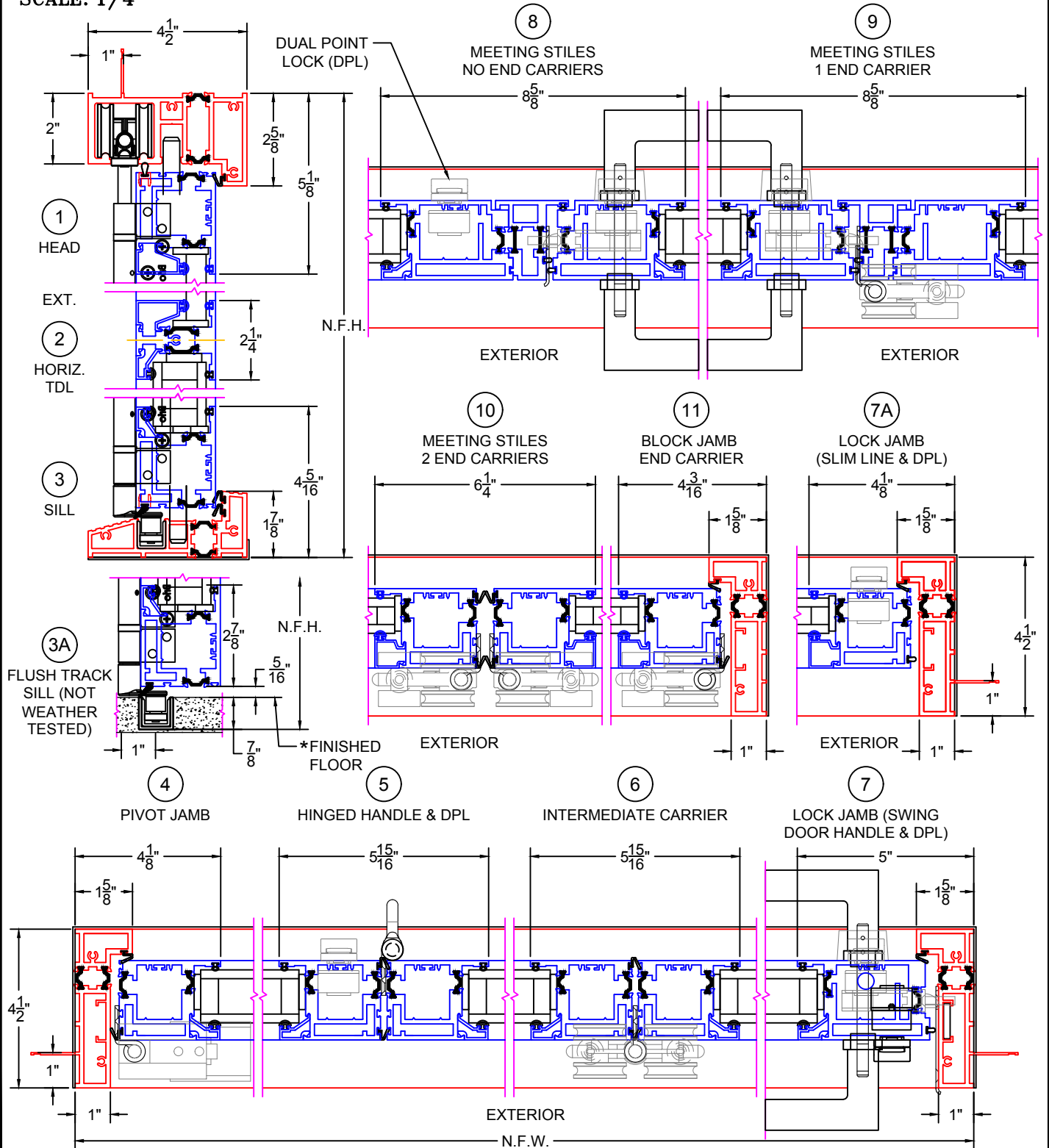


(USE RULER TO SCALE DIMENSIONS IN INCHES)

SCALE: 1/4

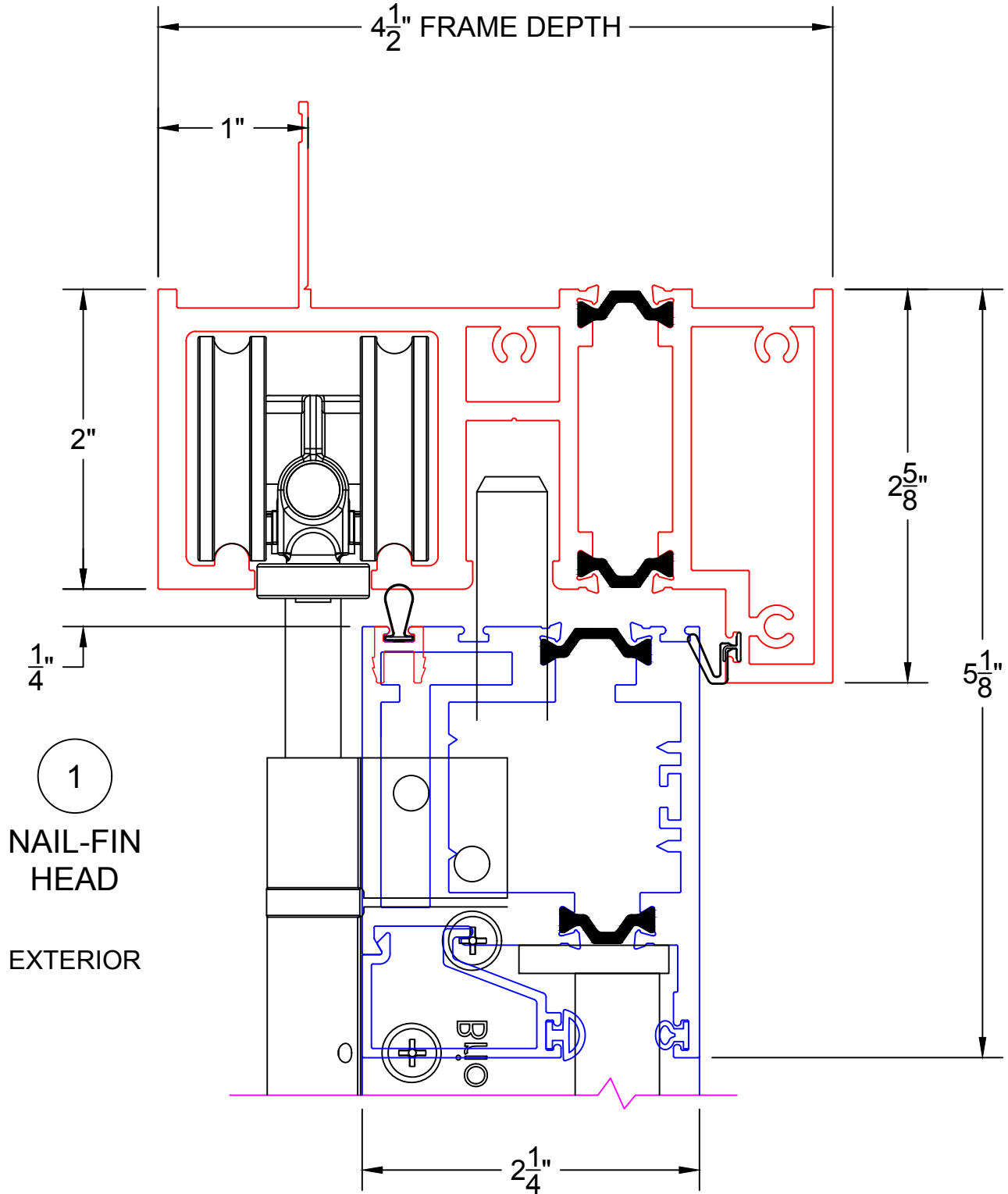
**FOLDING OUT-SWING DOOR DETAILS**  
1" & 1-1/2" INSULATED & 9/16" SINGLE  
GLAZING SHOWN



- REFERENCE PAGE 3600-T-003 FOR ELEVATIONS.
- NAIL-FIN FRAME SHOWN, BLOCK FRAME AVAILABLE.
- GLASS PENETRATION = 9/16"
- EXTERIOR RATED PRODUCTS HAVE WEEP SLOTS ON HORIZONTAL SILLS.
- MEETING STILES WITH NO END CARRIERS: ACTIVE RIGHT SHOWN.
- \*JAMBS TO THE FINISHED FLOOR HEIGHT (FINISHED FLOOR BY OTHERS).

**FOLDING OUT-SWING DOOR DETAILS**  
9/16" SINGLE GLAZING SHOWN

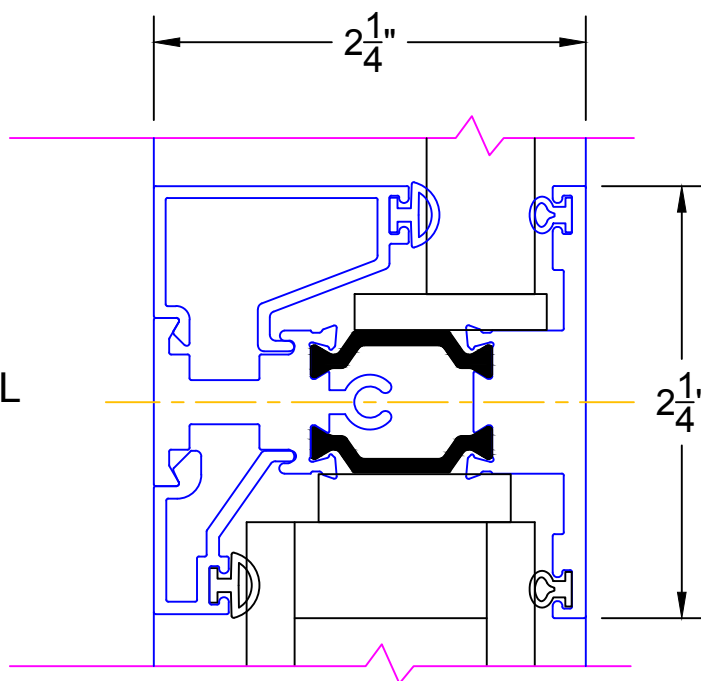
0 0.5 1  
 (USE RULER TO SCALE DIMENSIONS IN INCHES)  
**SCALE: FULL**

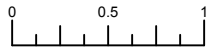


0 0.5 1  
(USE RULER TO SCALE DIMENSIONS IN INCHES)  
**SCALE: FULL**

**FOLDING OUT-SWING DOOR DETAILS**  
**1-1/2" INSULATED AND 9/16" SINGLE**  
**GLAZING SHOWN**

②  
HORIZONTAL  
TDL BAR  
  
EXTERIOR

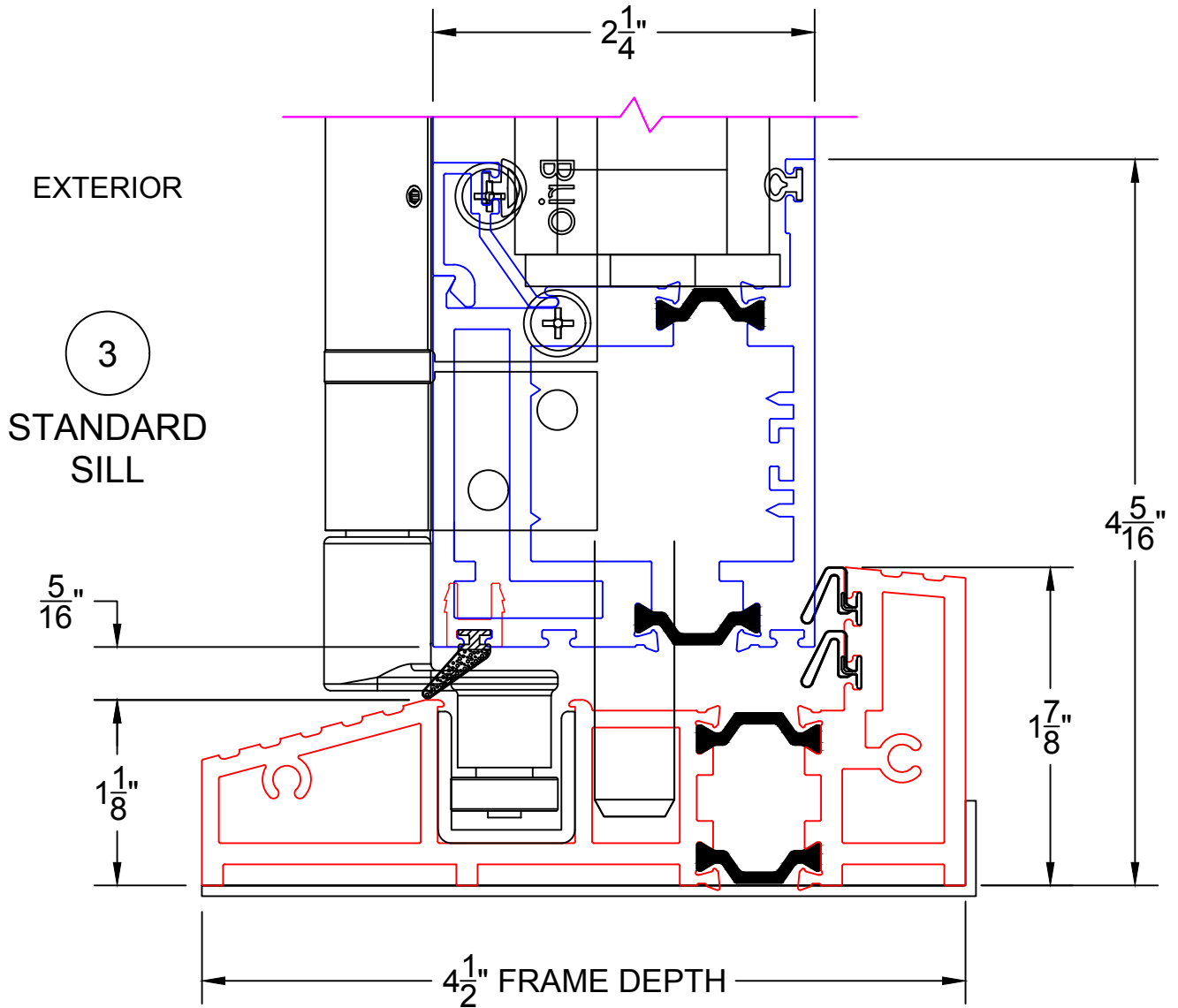




(USE RULER TO SCALE DIMENSIONS IN INCHES)

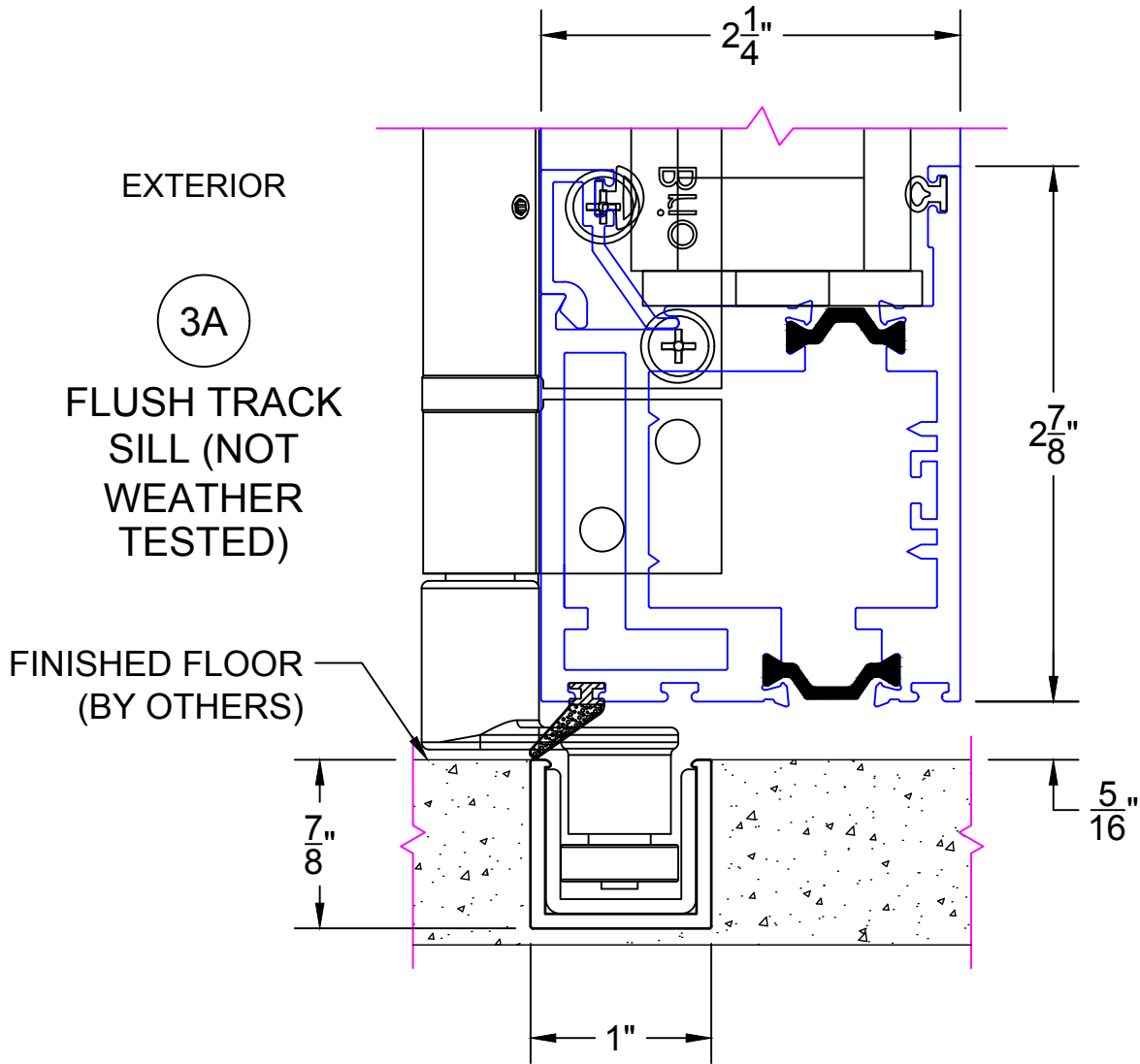
SCALE: FULL

**FOLDING OUT-SWING DOOR DETAILS**  
**1-1/2" INSULATED GLAZING SHOWN**



0 0.5 1  
 (USE RULER TO SCALE DIMENSIONS IN INCHES)  
**SCALE: FULL**

**FOLDING OUT-SWING DOOR DETAILS**  
**1-1/2" INSULATED GLAZING SHOWN**

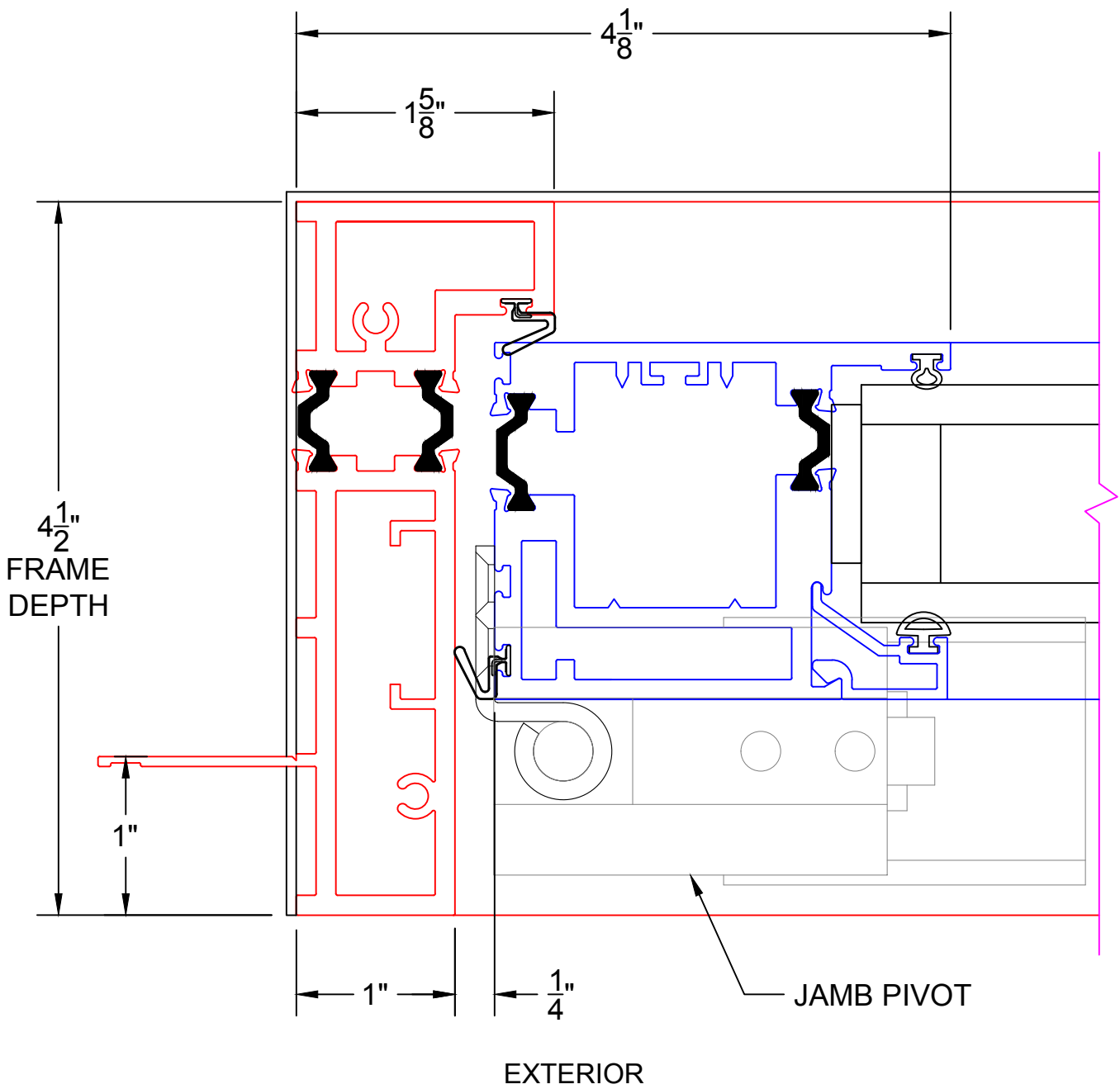


0 0.5 1  
 (USE RULER TO SCALE DIMENSIONS IN INCHES)  
**SCALE: FULL**

**FOLDING OUT-SWING DOOR DETAILS**  
**1-1/2" INSULATED GLAZING SHOWN**

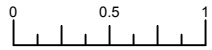
4

**PIVOT  
 JAMB**



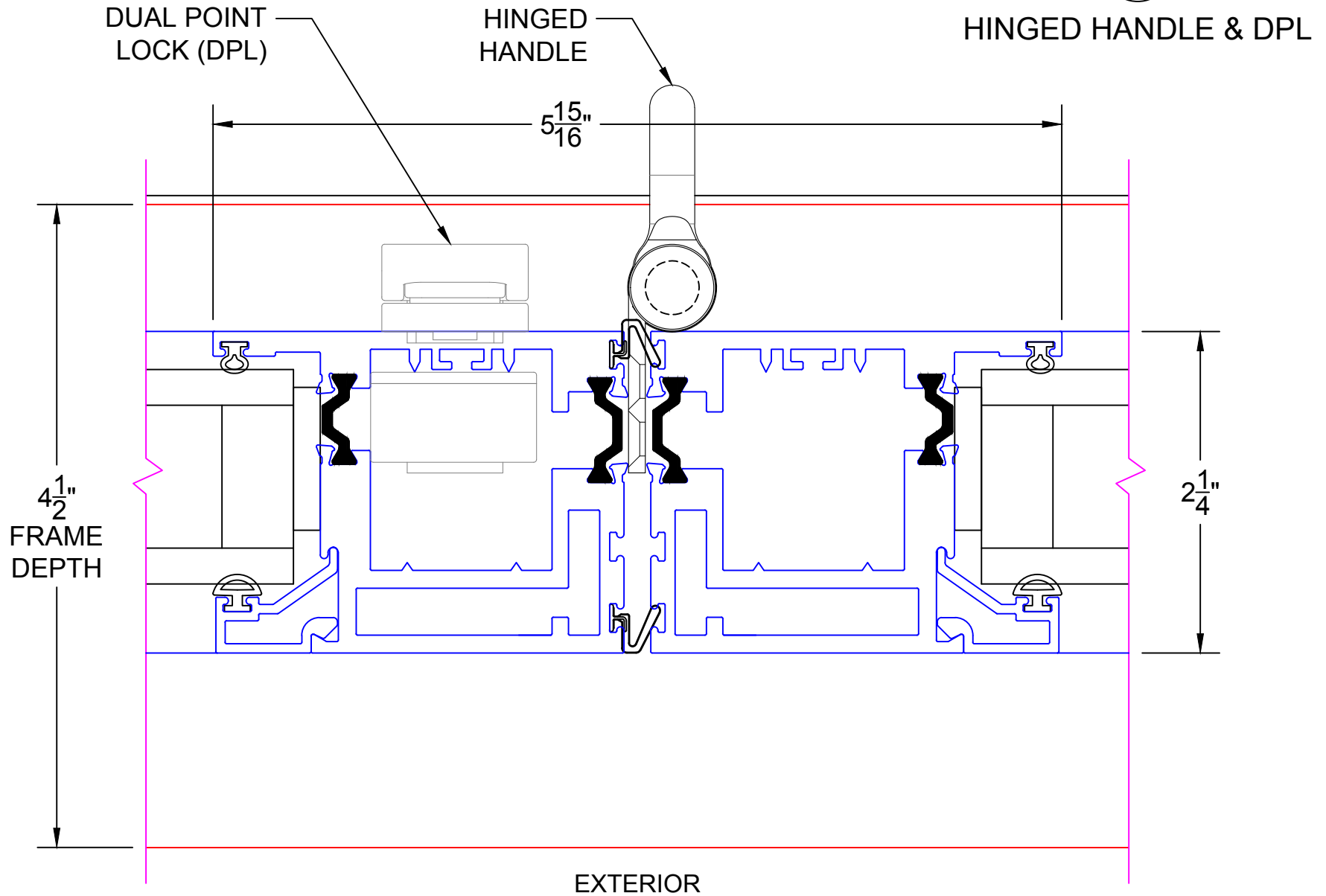
## FOLDING OUT-SWING DOOR DETAILS 1-1/2" INSULATED GLAZING SHOWN

5

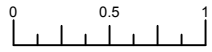


(USE RULER TO SCALE DIMENSIONS IN INCHES)

SCALE: FULL



FOLDING OUT-SWING DOOR DETAILS  
1-1/2" INSULATED GLAZING SHOWN

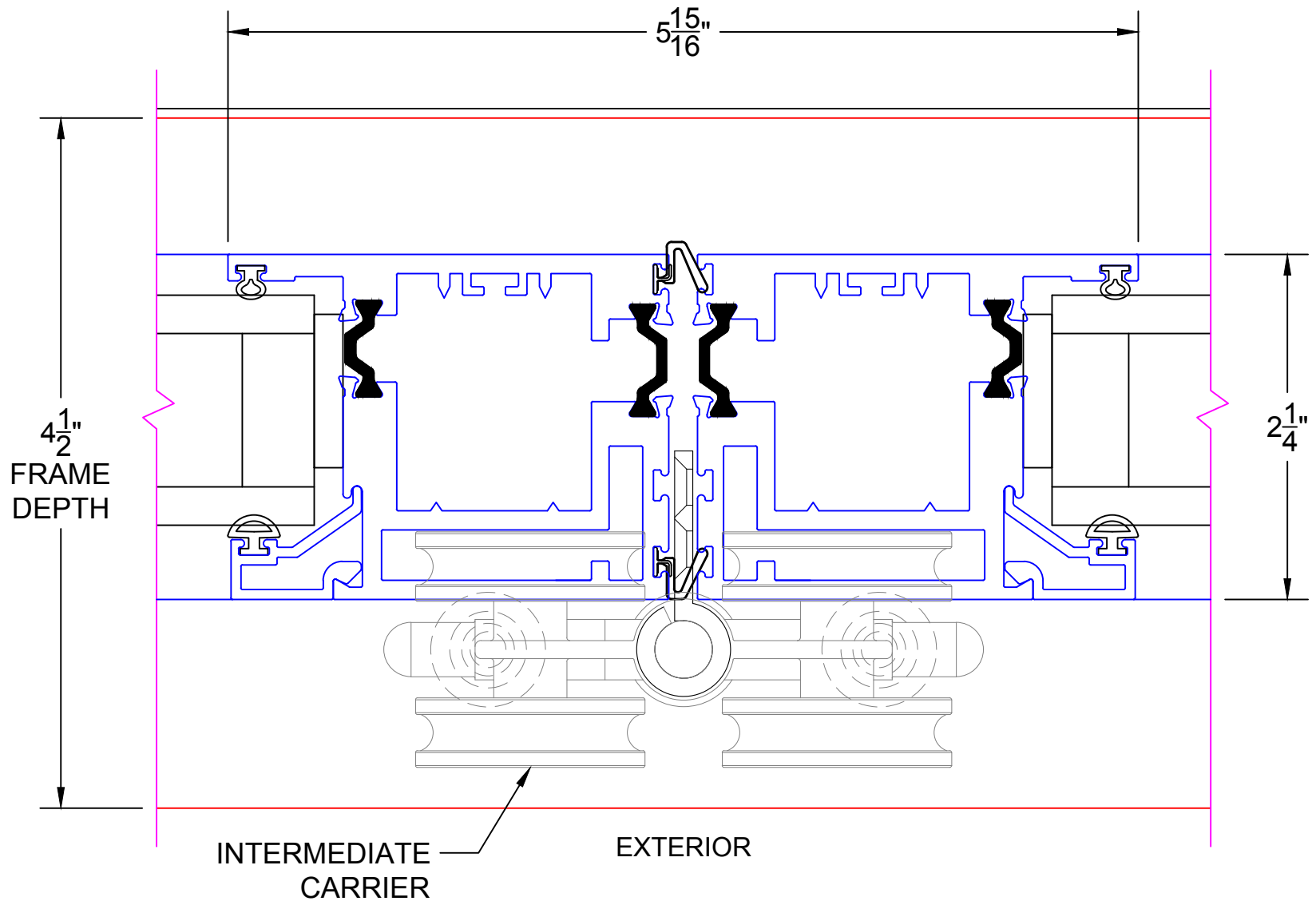


(USE RULER TO SCALE DIMENSIONS IN INCHES)

SCALE: FULL

6

INTERMEDIATE CARRIER



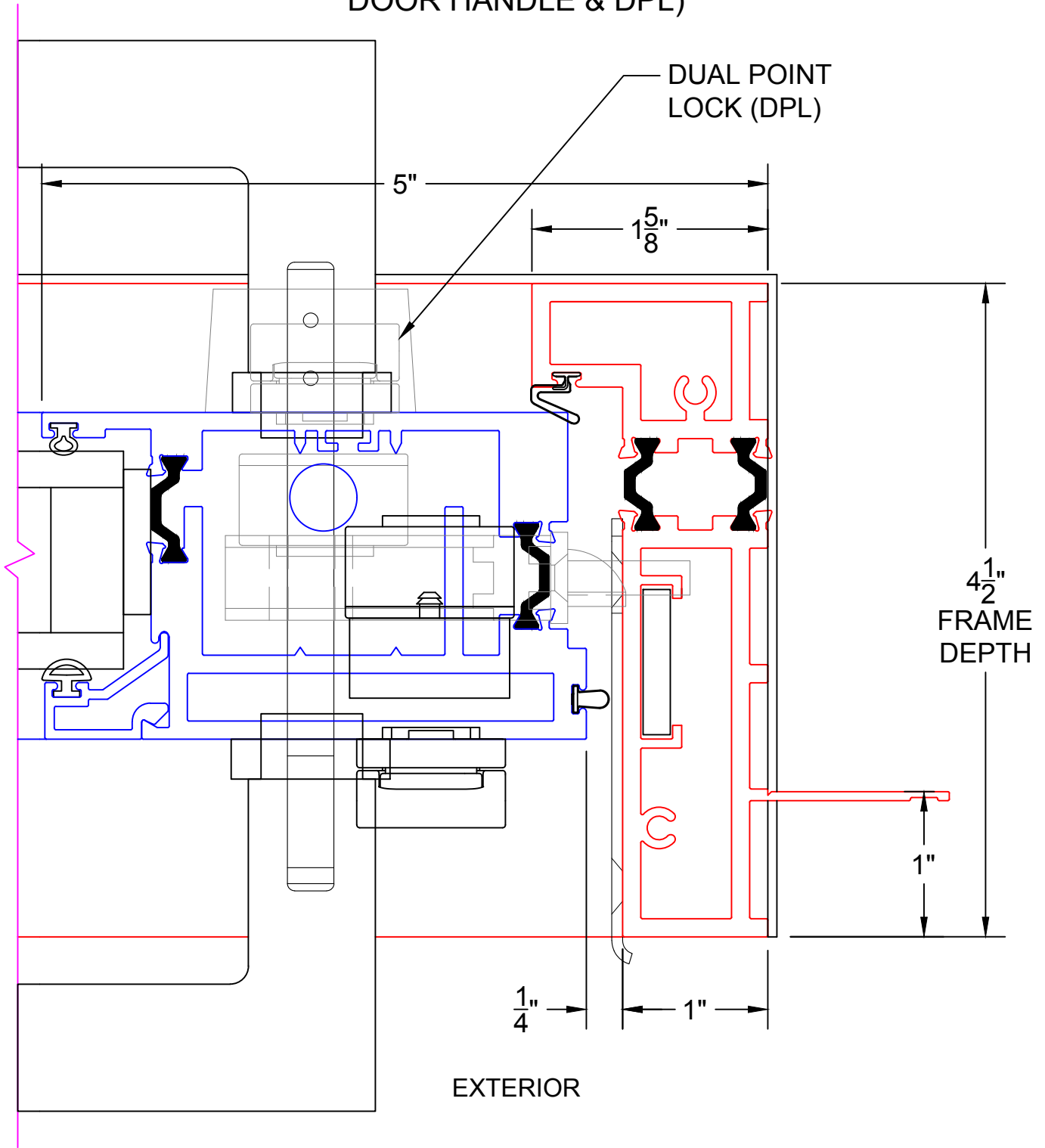


0 0.5 1  
(USE RULER TO SCALE DIMENSIONS IN INCHES)  
**SCALE: FULL**

**FOLDING OUT-SWING DOOR DETAILS**  
**1-1/2" INSULATED GLAZING SHOWN**

7

**LOCK JAMB (SWING DOOR HANDLE & DPL)**



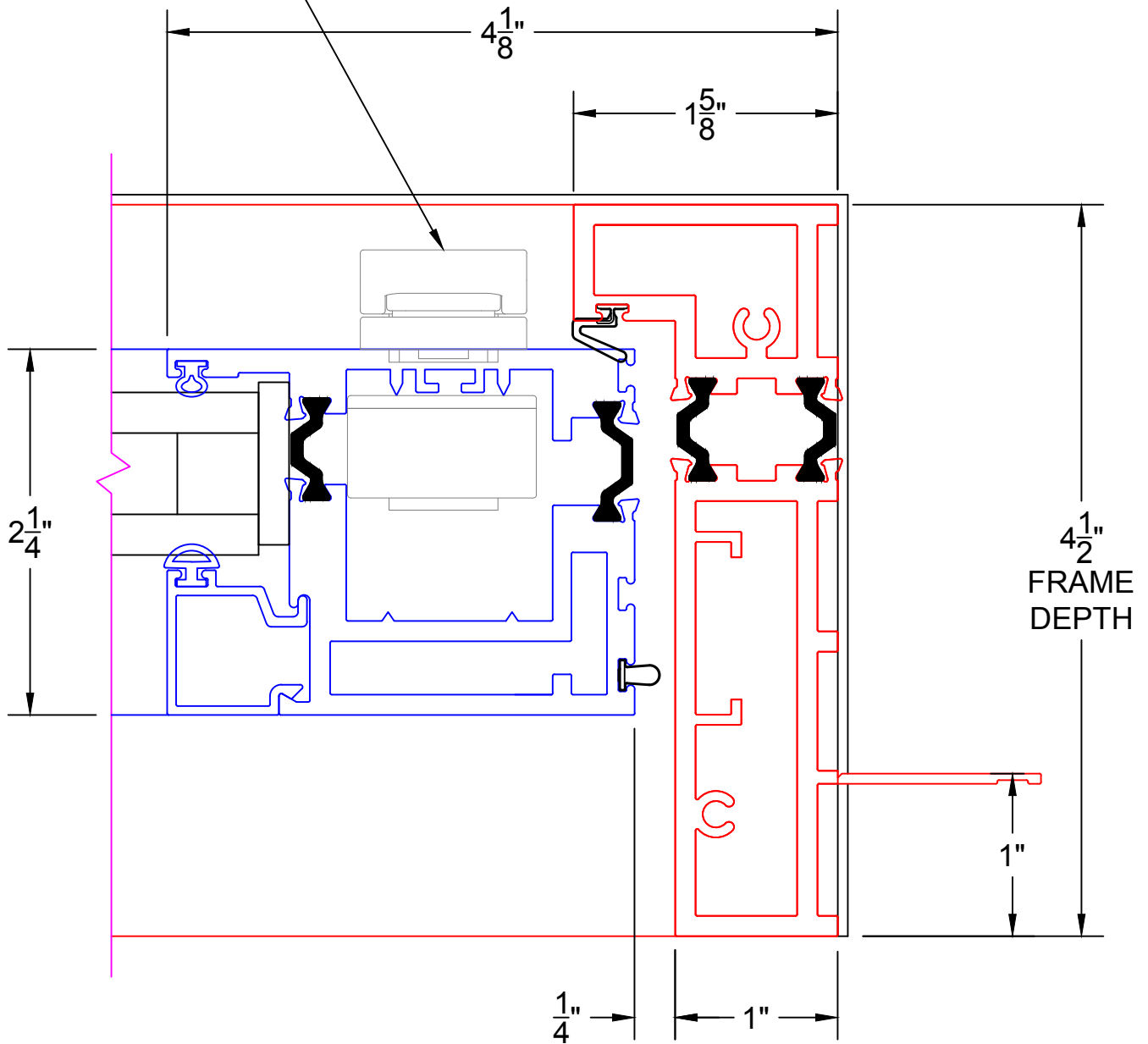
0 0.5 1  
 (USE RULER TO SCALE DIMENSIONS IN INCHES)  
**SCALE: FULL**

**FOLDING OUT-SWING DOOR DETAILS**  
**1" INSULATED GLAZING SHOWN**

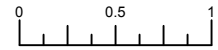
7A

**LOCK JAMB**  
**(SLIM LINE & DPL)**

DUAL POINT  
 LOCK (DPL)



EXTERIOR



(USE RULER TO SCALE DIMENSIONS IN INCHES)

SCALE: FULL

8

FOLDING OUT-SWING DOOR DETAILS  
1-1/2" INSULATED GLAZING SHOWN

MEETING STILES  
NO END CARRIERS

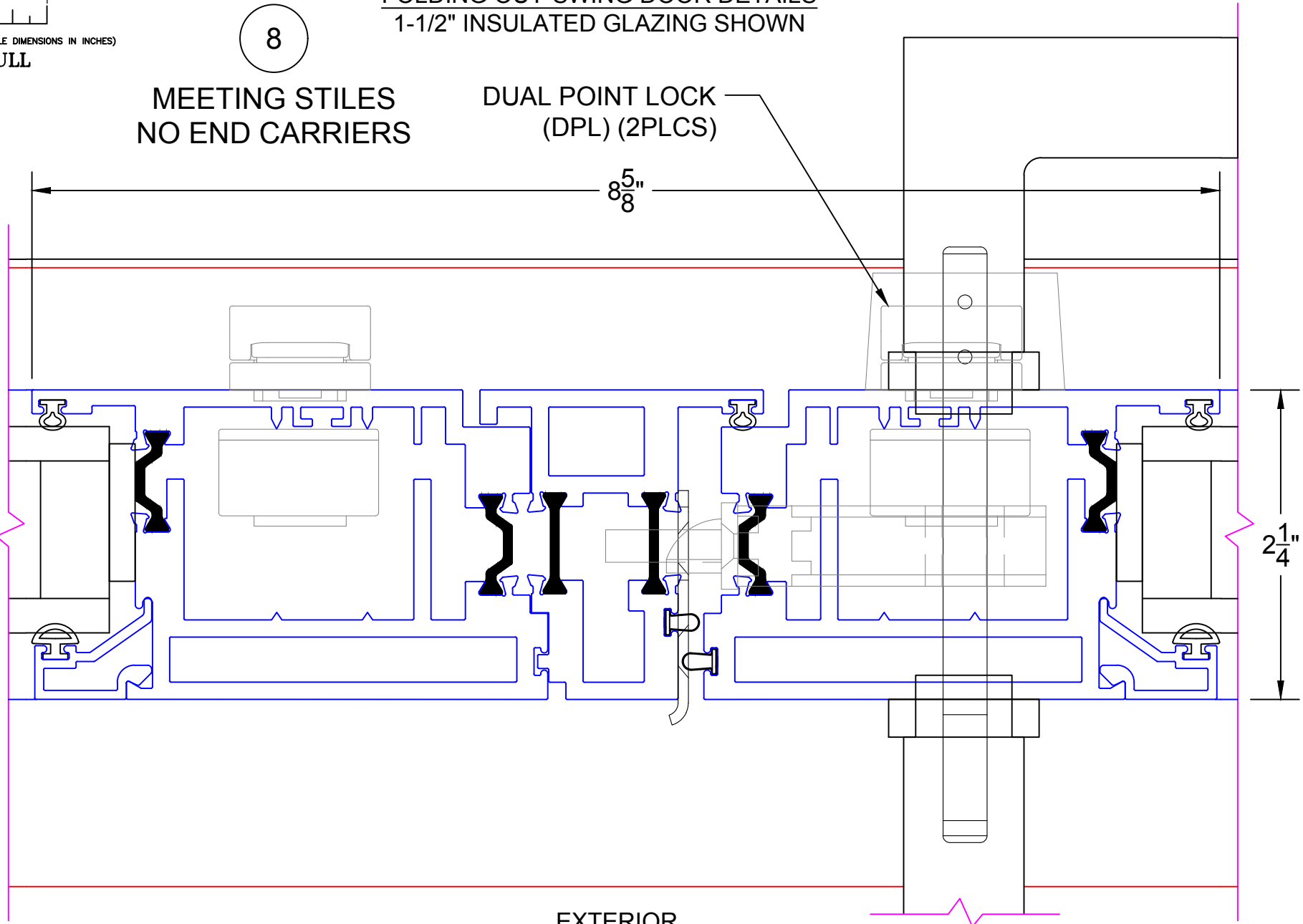
DUAL POINT LOCK  
(DPL) (2PLCS)

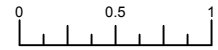
8<sup>5</sup>/<sub>8</sub>"

4<sup>1</sup>/<sub>2</sub>"  
FRAME  
DEPTH

2<sup>1</sup>/<sub>4</sub>"

EXTERIOR





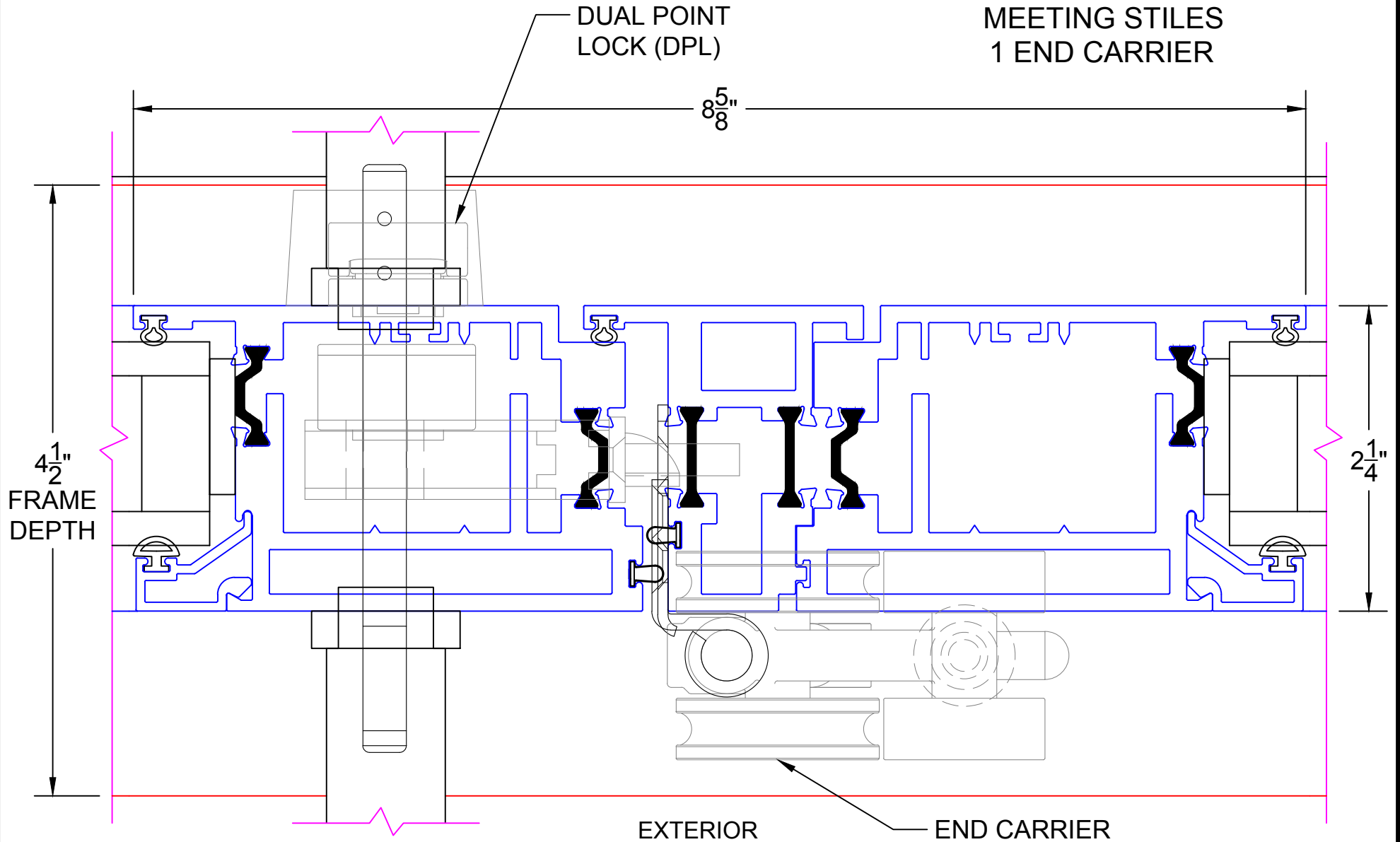
(USE RULER TO SCALE DIMENSIONS IN INCHES)

SCALE: FULL

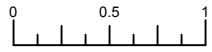
## FOLDING OUT-SWING DOOR DETAILS 1-1/2" INSULATED GLAZING SHOWN

9

MEETING STILES  
1 END CARRIER



## FOLDING OUT-SWING DOOR DETAILS 1" INSULATED GLAZING SHOWN

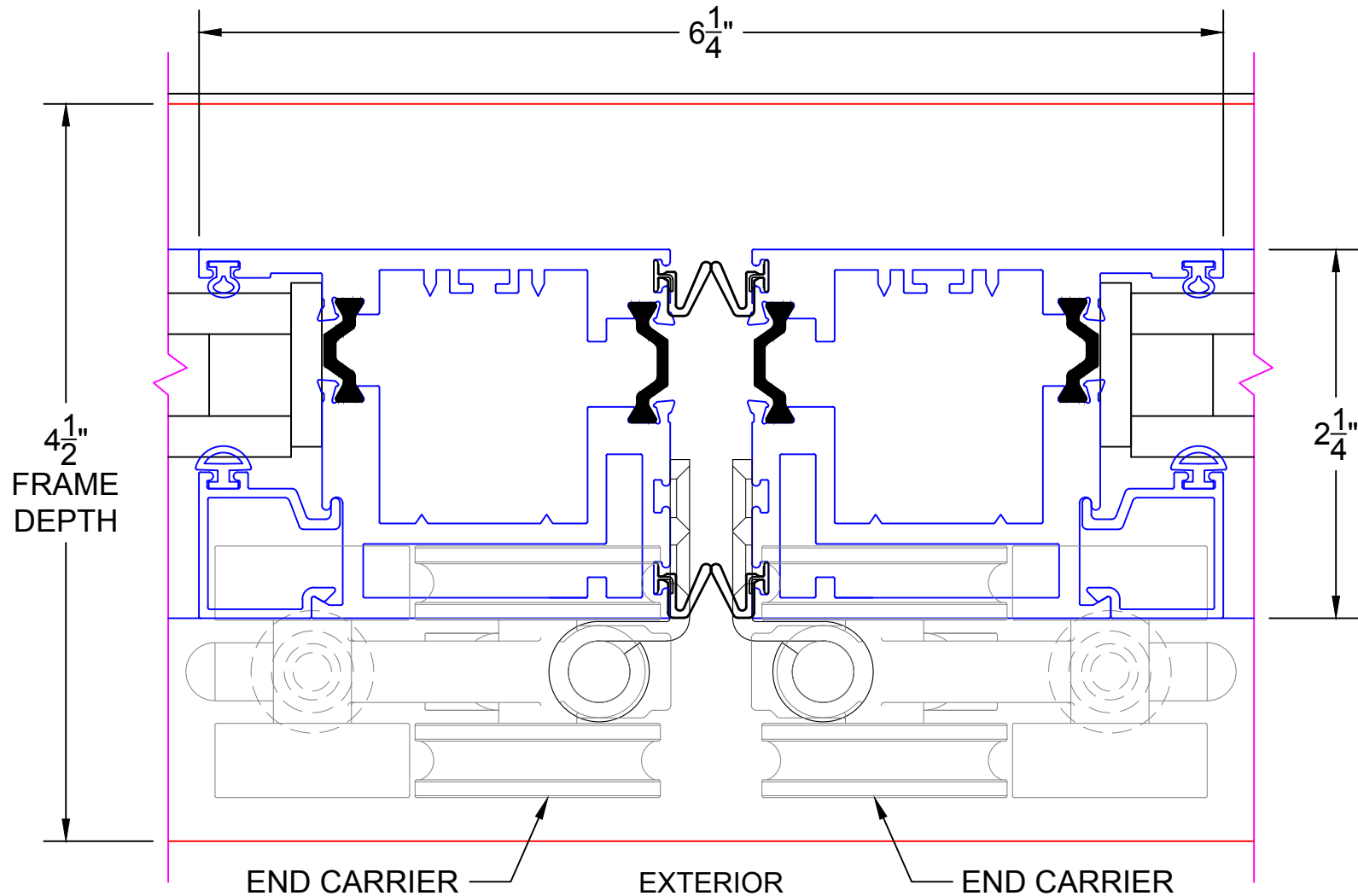


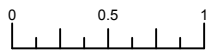
(USE RULER TO SCALE DIMENSIONS IN INCHES)

SCALE: FULL

10

MEETING STILES  
2 END CARRIERS





(USE RULER TO SCALE DIMENSIONS IN INCHES)

**SCALE: FULL**

**FOLDING OUT-SWING DOOR DETAILS**  
**1" INSULATED GLAZING SHOWN**

11

**JAMB**  
**END CARRIER**

