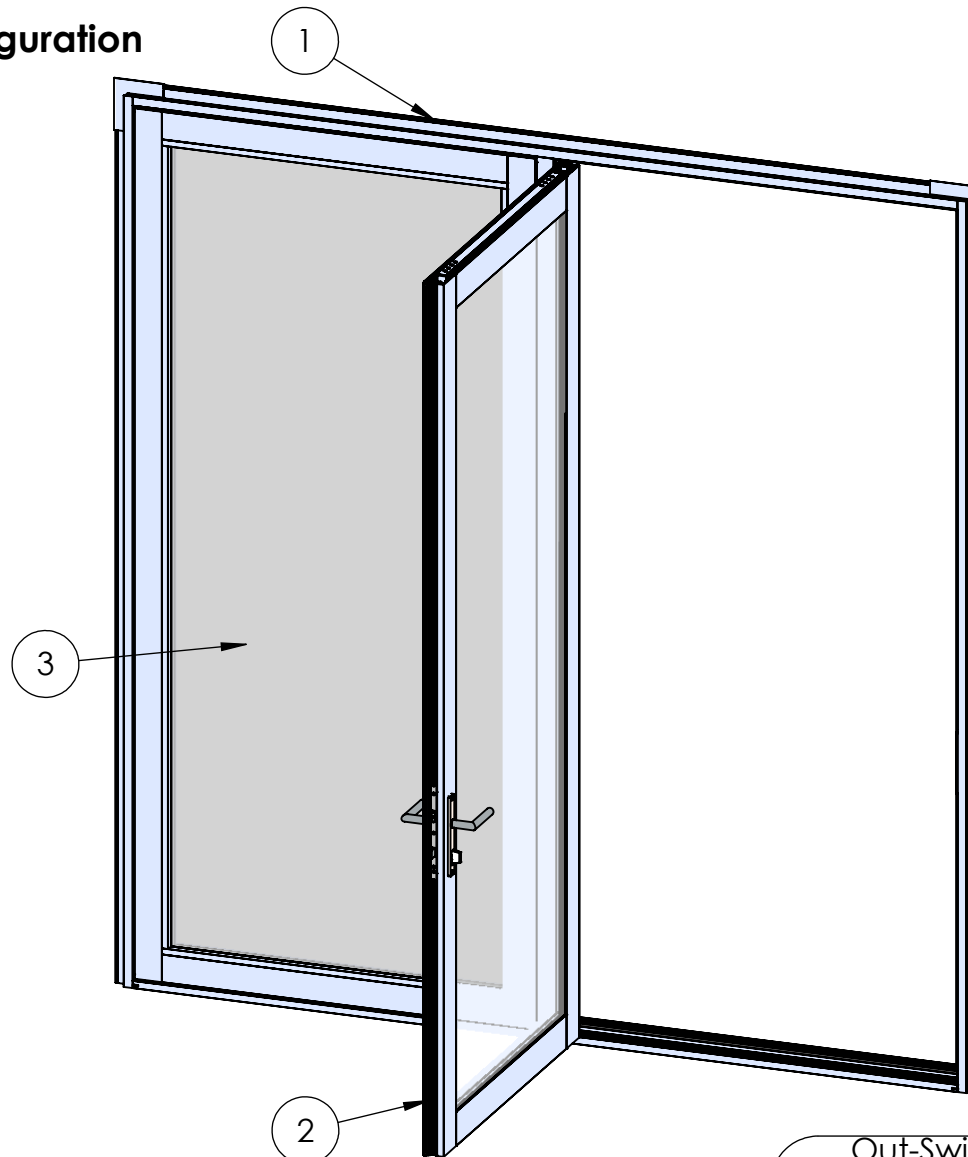


ASSEMBLY / PARTS LIST (B.O.M.)

Series: 3200-T
Type: OH Configuration



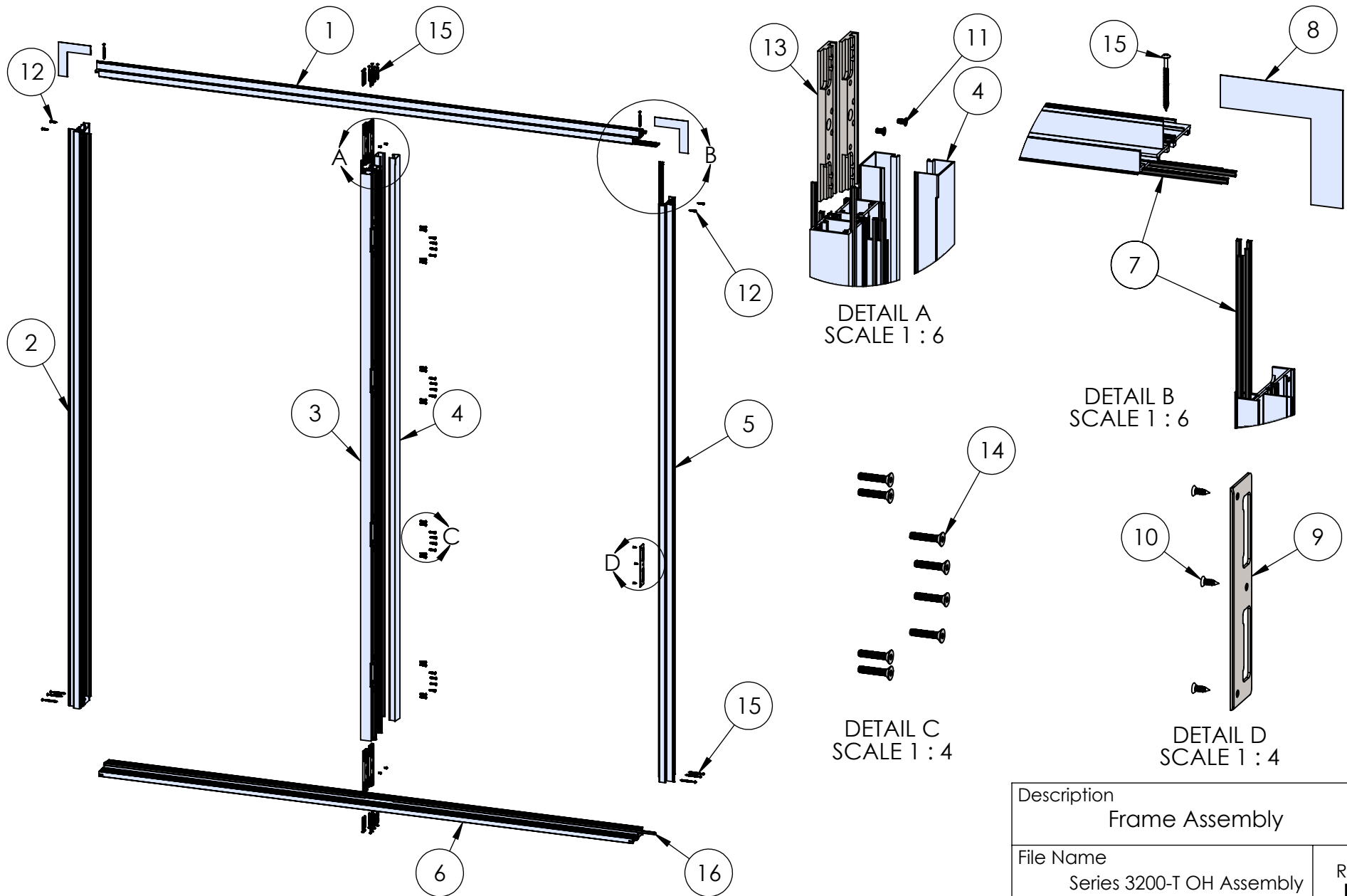
Out-Swing,
Hinge Left
Door Shown

TABLE OF CONTENTS			
ITEM NO.	DESCRIPTION	QTY.	PAGE #
1	Frame Assembly	1	2-3
2	Active Panel	1	4-5
3	Fixed Panel	1	6-7

PROPRIETARY AND CONFIDENTIAL
THE INFORMATION CONTAINED IN THIS DRAWING IS THE SOLE PROPERTY OF FLEETWOOD WINDOWS & DOORS.
ANY REPRODUCTION IN PART OR AS A WHOLE WITHOUT THE WRITTEN PERMISSION OF FLEETWOOD WINDOWS & DOORS IS PROHIBITED.

Description Table of Contents	
File Name Series 3200-T OH Assembly	REV B
Released 9/14/2023	SHEET 1 OF 7

ASSEMBLY / PARTS LIST (B.O.M.)



PROPRIETARY AND CONFIDENTIAL

THE INFORMATION CONTAINED IN THIS DRAWING IS THE SOLE PROPERTY OF FLEETWOOD WINDOWS & DOORS.
ANY REPRODUCTION IN PART OR AS A WHOLE WITHOUT THE WRITTEN PERMISSION OF FLEETWOOD WINDOWS & DOORS IS PROHIBITED.

Description Frame Assembly	
File Name Series 3200-T OH Assembly	REV B
Released 9/14/2023	SHEET 2 OF 7

ASSEMBLY / PARTS LIST (B.O.M.)

EXTRUSIONS

ITEM NO.	PART NUMBER	DESCRIPTION	QTY.
1	3207,3208,3209	Head (Block, Out-Swing, In-Swing)	1
2	3207,3208,3209	Left Jamb (Block, Out-Swing, In-Swing)	1
3	3913	Frame Mullion	1
4	3912	Snap-in	2
5	3207,3208,3209	Right Jamb (Block, Out-Swing, In-Swing)	1
6	3202,3904,3510	Sill (Out-Swing, In-Swing, 1/2" Sill)	1

HARDWARE

ITEM NO.	PART NUMBER	DESCRIPTION	QTY.
7	25190	Q-Lon Foam Seal (0.250 x 0.190)	28
8	18629	Metal Corner w/ Double sided tape	2
9	24993	Latch-Deadbolt Strike Plate	1
10	20240	#8 FHP-A-UC, 0.5", SS, Clear	3
11	20266	#10-32 FHP-B-UC Screw, .375"	4
12	20350	#10 PHP Screw, 1"	4
13	25680	Hinge Back Up Plate Spacer - TDL	4
14	25488, 25489	#10-32 FH Torx Screw, 1" (SS, BLK)	32
15	25075	#10 PHP-A Screw, 2.5"	24
16	25059	Q-Lon Foam Seal	2

Description
Frame Assembly B.O.M.

File Name
Series 3200-T OH Assembly

REV
B

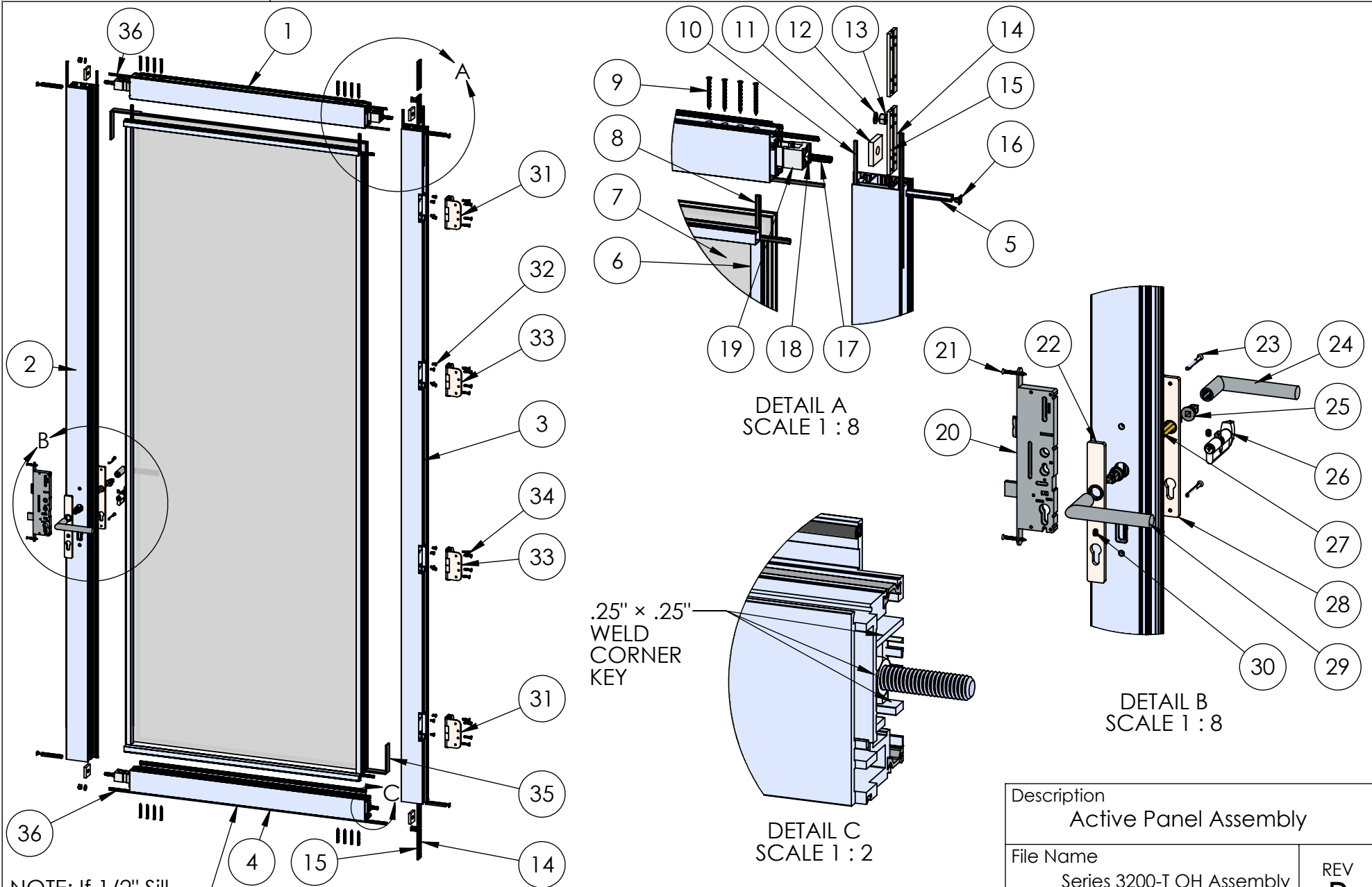
PROPRIETARY AND CONFIDENTIAL

THE INFORMATION CONTAINED IN THIS DRAWING IS THE SOLE PROPERTY OF FLEETWOOD WINDOWS & DOORS.
ANY REPRODUCTION IN PART OR AS A WHOLE WITHOUT THE WRITTEN PERMISSION OF FLEETWOOD WINDOWS & DOORS IS PROHIBITED.

Released 9/14/2023

SHEET 3 OF 7

ASSEMBLY / PARTS LIST (B.O.M.)



NOTE: If 1/2" Sill
Comp. #23229
bottom seal only

PROPRIETARY AND CONFIDENTIAL

THE INFORMATION CONTAINED IN THIS DRAWING IS THE SOLE PROPERTY OF FLEETWOOD WINDOWS & DOORS.
ANY REPRODUCTION IN PART OR AS A WHOLE WITHOUT THE WRITTEN PERMISSION OF FLEETWOOD WINDOWS & DOORS IS PROHIBITED.

Description Active Panel Assembly		
File Name Series 3200-T OH Assembly		REV B
Released	9/14/2023	SHEET 4 OF 7

ASSEMBLY / PARTS LIST (B.O.M.)

EXTRUSIONS			
ITEM NO.	PART NUMBER	DESCRIPTION	QTY.
1	3203	Top Rail	1
2	3204	Lock Stile	1
3	3203	Hinge Stile	1
4	3203	Bottom Rail	1
5	3916	Seal Clip	4
6	3907	1" Glass Stop	4

HARDWARE			
ITEM NO.	PART NUMBER	DESCRIPTION	QTY.
7	-	Glass	1
8	25031	Bulb Vinyl Large	4
9	20258	#8 FHP Screw, 2"	16
10	25199	Mini Bulb Vinyl	4
11	25025	Back up Plate Corner Block	4
12	25024	.375 Split Lock Washer	4
13	25023	.375-16 Stainless Steel Hex Nut	4
14	25194	Hinge Interior Back Up Plate-Panel	4
15	25195	Hinge Exterior Back Up Plate-Panel	4
16	26684	Bottom and Top Clip Cap	4
17	25203	Hex Head Cap Screw .375-16, 2.0",	4
18	25176	.375-16 Hex Nut, .5625 Wt, .218 Ht	4
19	25201	Corner Block	4
20	25758	Yale Latch	1

HARDWARE			
ITEM NO.	PART NUMBER	DESCRIPTION	QTY.
21	20252	#8 FHP Screw, 1.50"	2
22	25207, 25398	Escutcheon-Active, Exterior (SS, BLK)	1
23	25342	#10-32 FHP Screw, 2.25"	2
24	26190, 26192	FSB_1076 Lever LH (SS, Black)	1
25	26212	Bushing/Adaptor for FSB	2
26	See Table A	FSB Cylinder with screw	1
27	26195	Spindle	1
28	25207, 25398	Escutcheon-Active, Interior (SS, BLK)	1
29	26189, 26191	FSB_1076 Lever RH (SS, Black)	1
30	26318	Cup-Point Set Screw M6 x 1 mm	2
31	25232, 25236	Adjustable Hinge, Horizontal RH (SS, BLK)	2
32	25486, 25487	#10-32 FH Torx Screw, 0.5" (SS, BLK)	16
33	25234, 25238	Adjustable Hinge, Vertical RH (SS, BLK)	2
34	25488, 25489	#10-32 FH Torx Screw, 1" (SS, BLK)	16
35	27313	Setting Block (4" x 3/16") x 1" with adhesive	4
36	25196	Q-Lon Foam Seal (32390)	2

TABLE A: CYLINDER OPTIONS		
TYPE	COLOR	ID #
Keyed Alike	SS	23204
	BLK	24010
Keyed Different	SS	25254
	BLK	25727

Description
Active Panel B.O.M.

File Name
Series 3200-T OH Assembly

REV
B

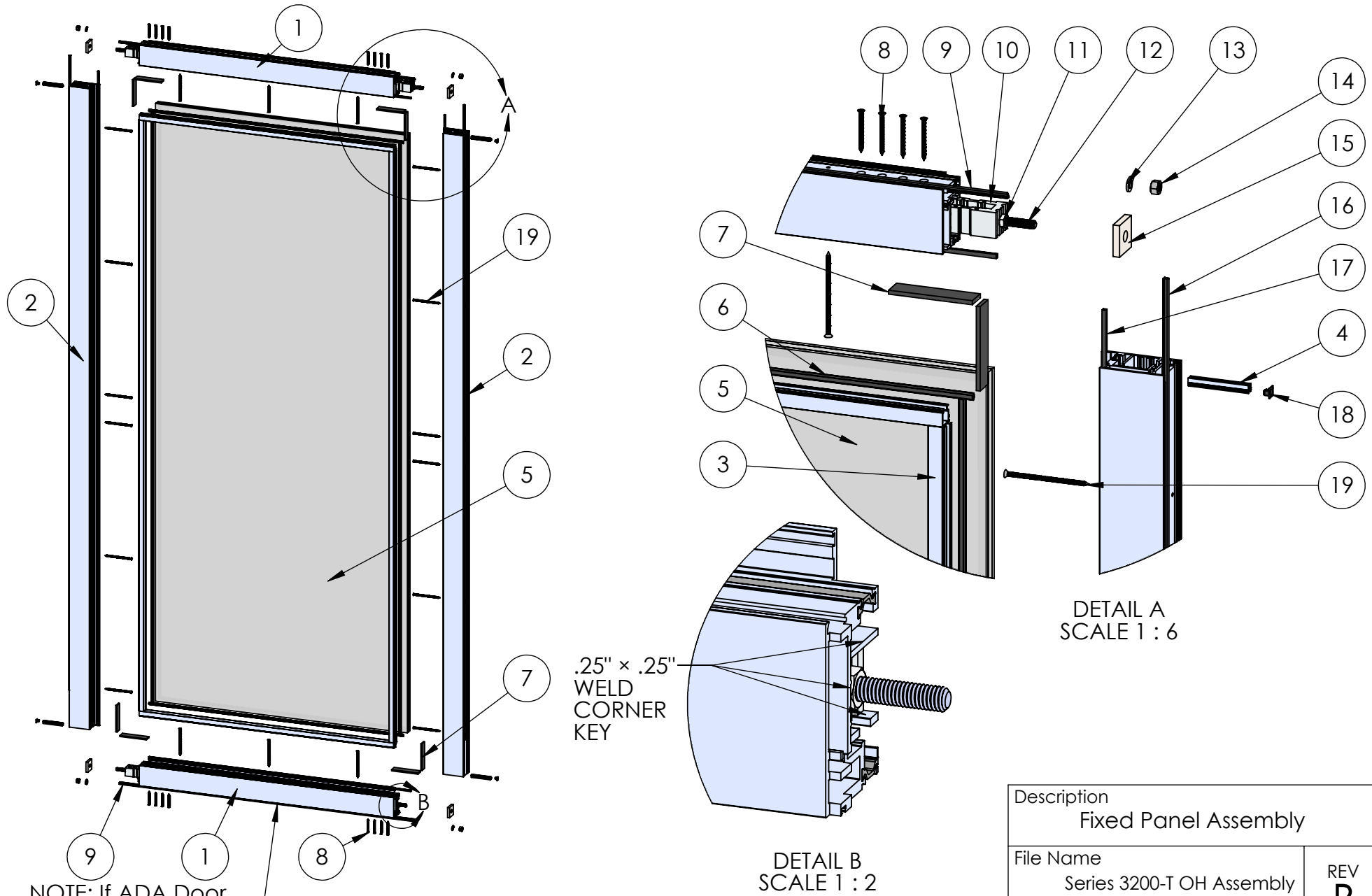
Released 9/14/2023

SHEET 5 OF 7

PROPRIETARY AND CONFIDENTIAL

THE INFORMATION CONTAINED IN THIS DRAWING IS THE SOLE PROPERTY OF FLEETWOOD WINDOWS & DOORS.
ANY REPRODUCTION IN PART OR AS A WHOLE WITHOUT THE WRITTEN PERMISSION OF FLEETWOOD WINDOWS & DOORS IS PROHIBITED.

ASSEMBLY / PARTS LIST (B.O.M.)



PROPRIETARY AND CONFIDENTIAL

THE INFORMATION CONTAINED IN THIS DRAWING IS THE SOLE PROPERTY OF FLEETWOOD WINDOWS & DOORS.
ANY REPRODUCTION IN PART OR AS A WHOLE WITHOUT THE WRITTEN PERMISSION OF FLEETWOOD WINDOWS & DOORS IS PROHIBITED.

Description Fixed Panel Assembly		
File Name Series 3200-T OH Assembly		REV B
Released	9/14/2023	SHEET 6 OF 7

ASSEMBLY / PARTS LIST (B.O.M.)

EXTRUSIONS

ITEM NO.	PART NUMBER	DESCRIPTION	QTY.
1	3203	Top and Bottom Rail	2
2	3203	Inactive Stile	2
3	3907	1" Glass Stop (Shown)	4
4	3916	Seal Clip	4

HARDWARE

ITEM NO.	PART NUMBER	DESCRIPTION	QTY.
5	-	Glass	1
6	25031	Bulb Vinyl-Large	4
7	27313	Setting Block (4" x 3/16") x 1" with adhesive	8
8	20258	#8 FHP Screw, 2"	16
9	25196	Q-Lon Foam Seal (32390)	2
10	25201	Corner Block	4
11	25176	.375-16 Hex Nut, .5625 Wt, .218 Ht	4
12	25203	Hex Head Cap Screw .375-16, 2.0", Full Thread	4
13	25024	.375 Split Lock Washer	4
14	25023	.375-16 Stainless Steel Hex Nut	4
15	25025	Back up Plate Corner Block	4
16	25190	Q-Lon Foam Seal (0.250 x 0.190)	2
17	25199	Mini Bulb Vinyl	2
18	26684	Bottom and Top Clip Cap	4
19	20303	#10 FHP Screw, 4"	Varies

Description
Fixed Panel B.O.M.

File Name
Series 3200-T OH Assembly

REV
B

PROPRIETARY AND CONFIDENTIAL

THE INFORMATION CONTAINED IN THIS DRAWING IS THE SOLE PROPERTY OF FLEETWOOD WINDOWS & DOORS.
ANY REPRODUCTION IN PART OR AS A WHOLE WITHOUT THE WRITTEN PERMISSION OF FLEETWOOD WINDOWS & DOORS IS PROHIBITED.

Released 9/14/2023

SHEET 7 OF 7