

ASSEMBLY / PARTS LIST (B.O.M.)

Series: 3200-T

Type: H Configuration with Arche-duct and DPL

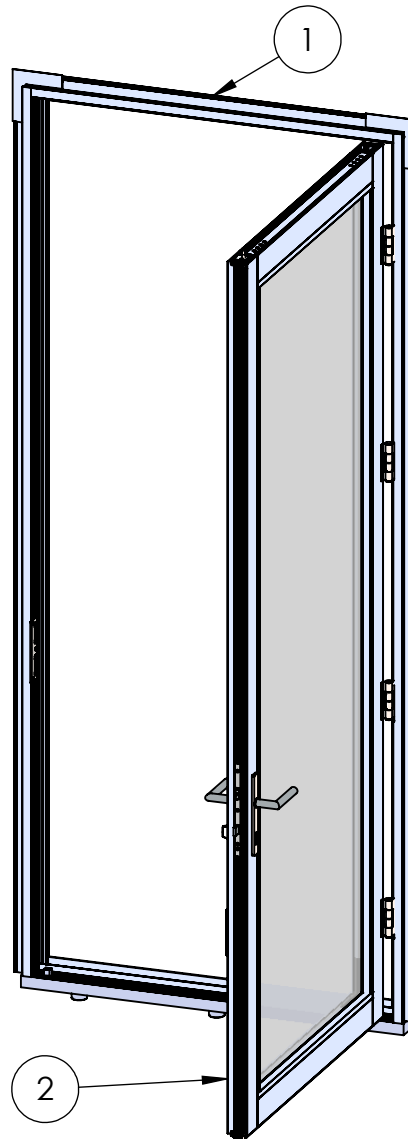


TABLE OF CONTENTS

ITEM NO.	DESCRIPTION	QTY.	PAGE #
1	Frame Assembly	1	2-3
2	Active Panel Assembly	1	4-5

Out-Swing
Door Shown

Description

Table of Contents

File Name

Series 3200-T H Assembly
with Arche-duct and DPL

REV

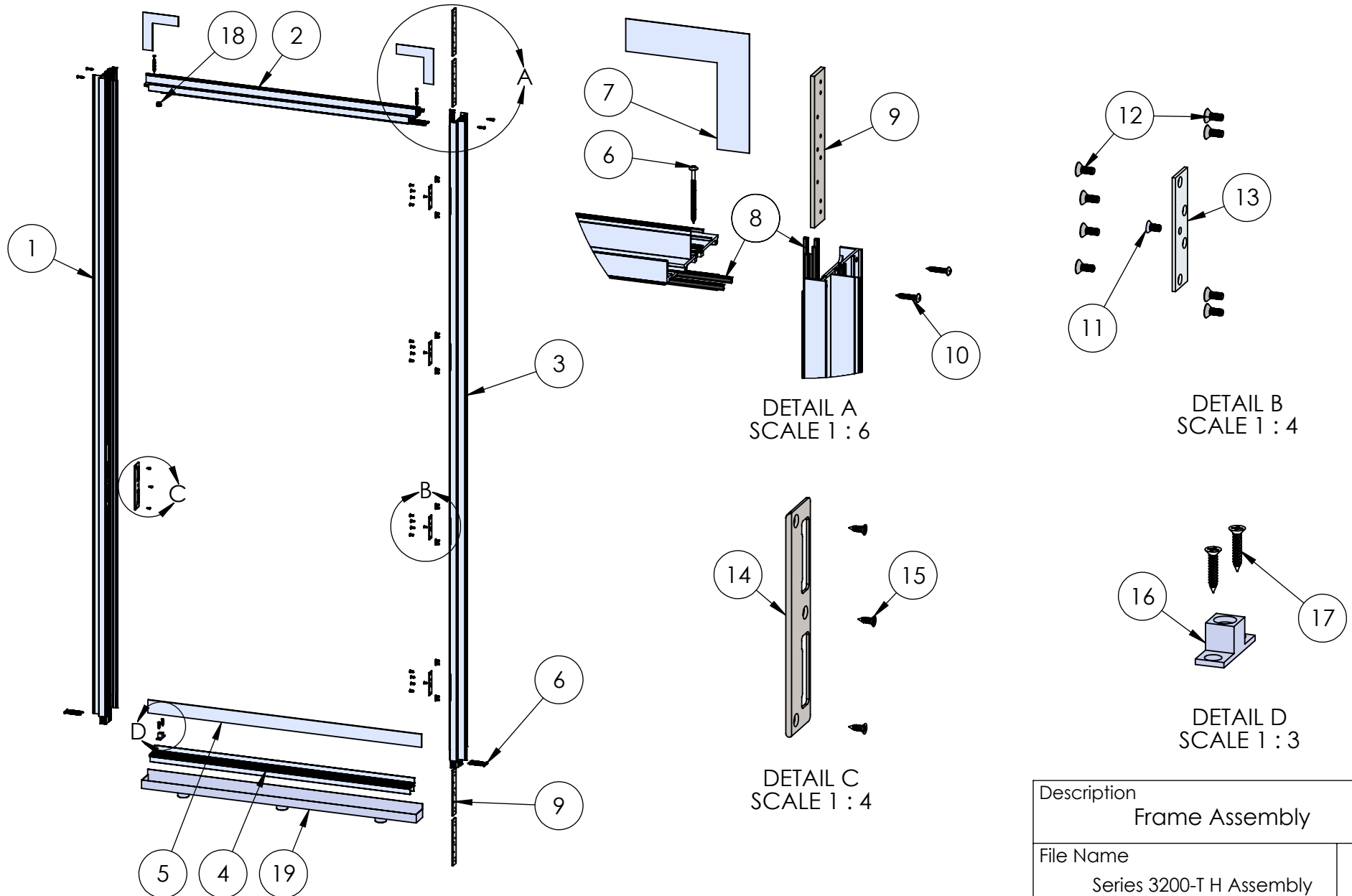
Released 9/14/2023

SHEET 1 OF 5

PROPRIETARY AND CONFIDENTIAL

THE INFORMATION CONTAINED IN THIS DRAWING IS THE SOLE PROPERTY OF FLEETWOOD WINDOWS & DOORS.
ANY REPRODUCTION IN PART OR AS A WHOLE WITHOUT THE WRITTEN PERMISSION OF FLEETWOOD WINDOWS & DOORS IS PROHIBITED.

ASSEMBLY / PARTS LIST (B.O.M.)



PROPRIETARY AND CONFIDENTIAL

THE INFORMATION CONTAINED IN THIS DRAWING IS THE SOLE PROPERTY OF FLEETWOOD WINDOWS & DOORS.
ANY REPRODUCTION IN PART OR AS A WHOLE WITHOUT THE WRITTEN PERMISSION OF FLEETWOOD WINDOWS & DOORS IS PROHIBITED.

Description Frame Assembly		
File Name Series 3200-T H Assembly with Arche-duct and DPL		REV
Released	9/14/2023	SHEET 2 OF 5

ASSEMBLY / PARTS LIST (B.O.M.)

EXTRUSIONS

ITEM NO.	PART NUMBER	DESCRIPTION	QTY.
1	3207,3208,3209	Lock Jamb (Block, Out-Swing, In-Swing)	1
2	3207,3208,3209	Head (Block, Out-Swing, In-Swing)	1
3	3207,3208,3209	Hinge Jamb (Block, Out-Swing, In-Swing)	1
4	4411	Arche-Duct Sill	1
5	FW1201	2.0" x 0.188" Alum Flat Bar (Slot Drain Spacer)	1

HARDWARE

ITEM NO.	PART NUMBER	DESCRIPTION	QTY.
6	25075	#10 PHP-A Screw, 2.5"	6
7	18629	Metal Corner w/ Double sided tape	2
8	25190	Q-Lon Foam Seal (0.250 x 0.190)	2
9	25192	Hinge Back Up Plate-Frame	4
10	20350	#10 PHP Screw, 1"	4
11	20266	#10-32 FHP-B-UC Screw, .375"	4
12	25486,25487	#10-32 FH Torx Screw, 0.5" (SS, BLK)	32
13	25202	Hinge Back Up Plate Spacer -Frame	4
14	24993	Latch-Deadbolt Strike Plate	1
15	20240	#8 FHP-A-UC, 0.5", SS, Clear	3
16	27113	Shoot Bolt Guide - Arche-Duct Anchor	1
17	20293	#10 FHP-A, 1", SS, Clear	2
18	20542	Shootbolt Cup	1
19	-	Arche-Duct	1

Description
Frame Assembly B.O.M.

File Name
Series 3200-T H Assembly
with Arche-duct and DPL

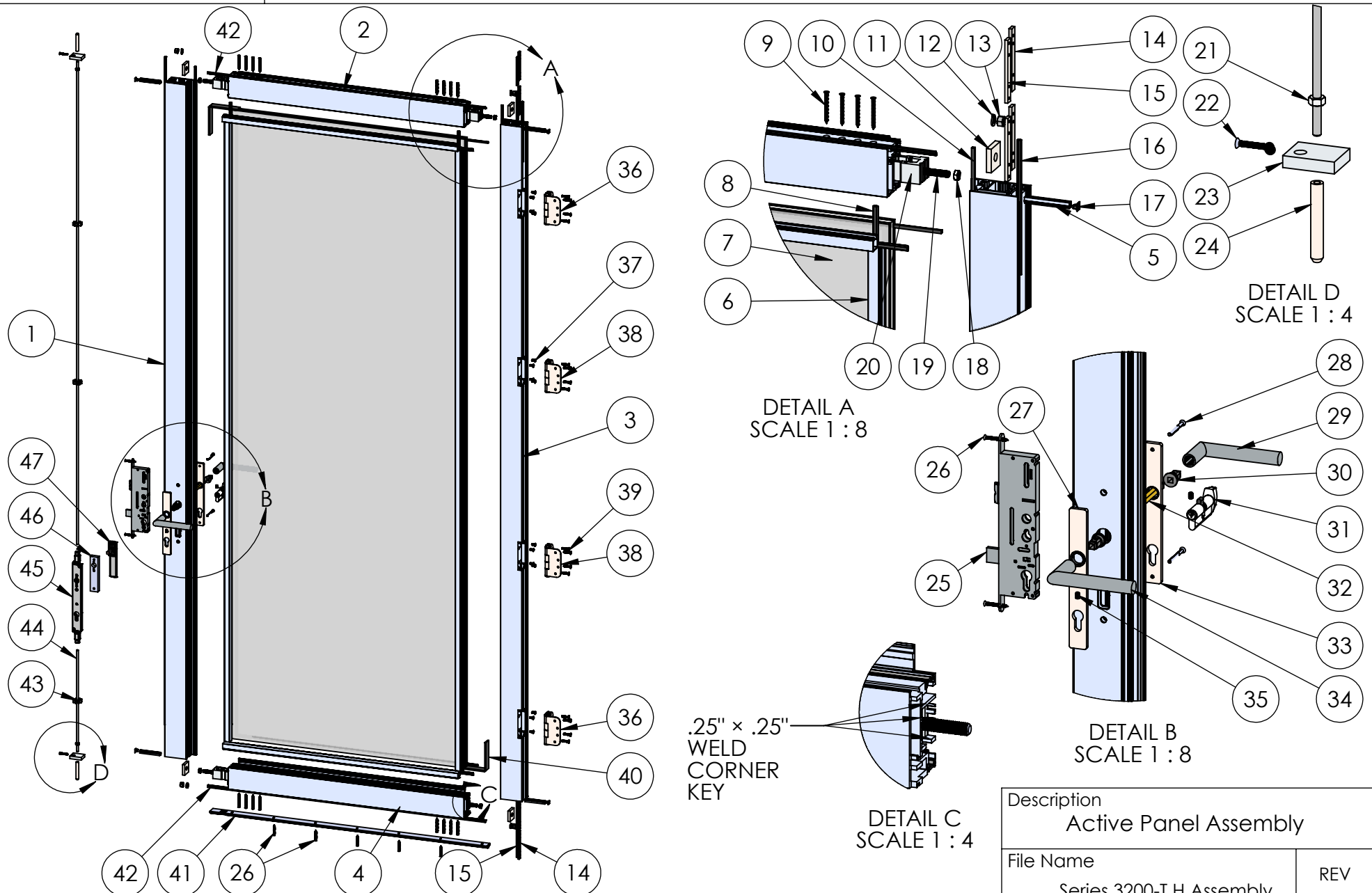
REV

Released 9/14/2023 SHEET 3 OF 5

PROPRIETARY AND CONFIDENTIAL

THE INFORMATION CONTAINED IN THIS DRAWING IS THE SOLE PROPERTY OF FLEETWOOD WINDOWS & DOORS.
ANY REPRODUCTION IN PART OR AS A WHOLE WITHOUT THE WRITTEN PERMISSION OF FLEETWOOD WINDOWS & DOORS IS PROHIBITED.

ASSEMBLY / PARTS LIST (B.O.M.)



PROPRIETARY AND CONFIDENTIAL

THE INFORMATION CONTAINED IN THIS DRAWING IS THE SOLE PROPERTY OF FLEETWOOD WINDOWS & DOORS.
ANY REPRODUCTION IN PART OR AS A WHOLE WITHOUT THE WRITTEN PERMISSION OF FLEETWOOD WINDOWS & DOORS IS PROHIBITED.

Description Active Panel Assembly		
File Name Series 3200-T H Assembly with Arche-duct and DPL		REV
Released	9/14/2023	SHEET 4 OF 5

ASSEMBLY / PARTS LIST (B.O.M.)

EXTRUSIONS			
ITEM NO.	PART NUMBER	DESCRIPTION	QTY.
1	3204	Lock Stile	1
2	3203	Top Rail	1
3	3203	Hinge Stile	1
4	3203	Bottom Rail	1
5	3916	Seal Clip	4
6	3907	1" Glass Stop	4

HARDWARE			
ITEM NO.	PART NUMBER	DESCRIPTION	QTY.
7	-	Glass	1
8	25031	Bulb Vinyl Large	4
9	20258	#8 FHP Screw, 2"	16
10	25199	Mini Bulb Vinyl	4
11	25025	Back up Plate Corner Block	4
12	25024	.375 Split Lock Washer	4
13	25023	.375-16 Stainless Steel Hex Nut	4
14	25194	Hinge Interior Back Up Plate-Panel	4
15	25195	Hinge Exterior Back Up Plate-Panel	4
16	25190	Q-Lon Foam Seal (0.250 x 0.190)	4
17	26684	Bottom and Top Clip Cap	4
18	25176	.375-16 Hex Nut, .5625 Wt, .218 Ht	4
19	25203	Hex Head Cap Screw .375-16, 2.0"	4
20	25201	Corner Block	4
21	24893	1/4-20 Hex Nut	2
22	25343	#8-32 FHP Machine Screw, 1.125"	2
23	25205	Shoot Bolt Guide	2
24	27055	Shoot Bolt Cap	2
25	25758	Yale Latch	1
26	20252	#8 FHP Screw, 1.50"	7

HARDWARE			
ITEM NO.	PART NUMBER	DESCRIPTION	QTY.
27	25207, 25398	Escutcheon-Active, Exterior (SS, BLK)	1
28	25342	#10-32 FHP Screw, 2.25"	2
29	26190, 26192	FSB_1076 Lever LH (SS, Black)	1
30	26212	Bushing/Adaptor for FSB	2
31	See Table A	FSB Cylinder with screw	1
32	26195	Spindle	1
33	25207, 25398	Escutcheon-Active, Interior (SS, BLK)	1
34	26189, 26191	FSB_1076 Lever RH (SS, Black)	1
35	26318	Cup-Point Set Screw M6 x 1 mm	2
36	25232, 25236	Adjustable Hinge, Horizontal RH (SS, BLK)	2
37	25486, 25487	#10-32 FH Torx Screw, 0.5" (SS, BLK)	16
38	25234, 25238	Adjustable Hinge, Vertical RH (SS, BLK)	2
39	25488, 25489	#10-32 FH Torx Screw, 1" (SS, BLK)	16
40	27313	Setting Block (4" x 3/16") x 1" with adhesive	4
41	23229	Door Sweep 48" ADA Sill Black	1
42	25196	Q-Lon Foam Seal (32390)	2
43	25566	Shoot Bolt Rod Guide (Spider)	3
44	27067	Threaded Rod, .250-20, cut to size	2
45	25662	DPL Lock Body	1
46	26837	Aluminum Lock Spacer	1
47	25656, 25657	DPL Non-Locking Handle (SS, Blk)	1

TABLE A: CYLINDER OPTIONS

TYPE	COLOR	ID #
Keyed Alike	SS	23204
	BLK	24010
Keyed Different	SS	25254
	BLK	25727

Description
Active Panel B.O.M.

File Name
Series 3200-T H Assembly
with Arche-duct and DPL

REV

Released 9/14/2023

SHEET 5 OF 5

PROPRIETARY AND CONFIDENTIAL

THE INFORMATION CONTAINED IN THIS DRAWING IS THE SOLE PROPERTY OF FLEETWOOD WINDOWS & DOORS.
ANY REPRODUCTION IN PART OR AS A WHOLE WITHOUT THE WRITTEN PERMISSION OF FLEETWOOD WINDOWS & DOORS IS PROHIBITED.