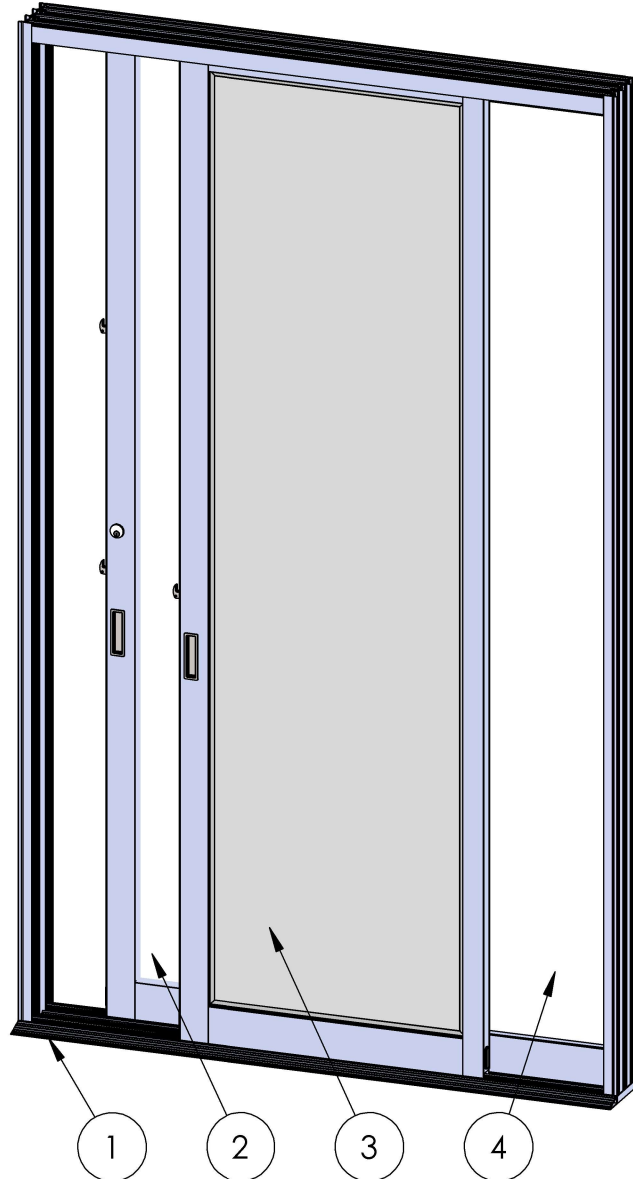


# ASSEMBLY / PARTS LIST (B.O.M.)

**Series: 3070**

**Type: Narrow XO Configuration with Screen and A2 Roller Option**



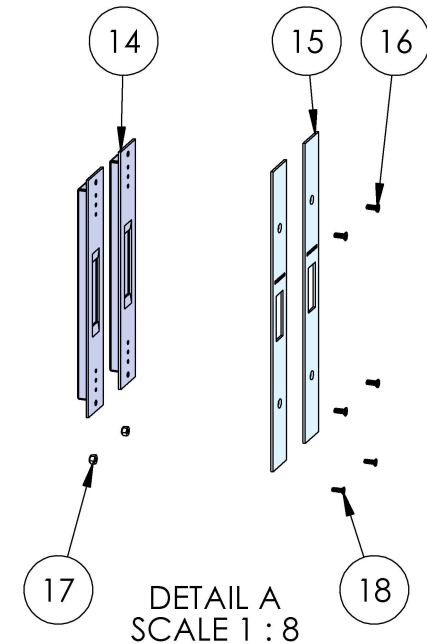
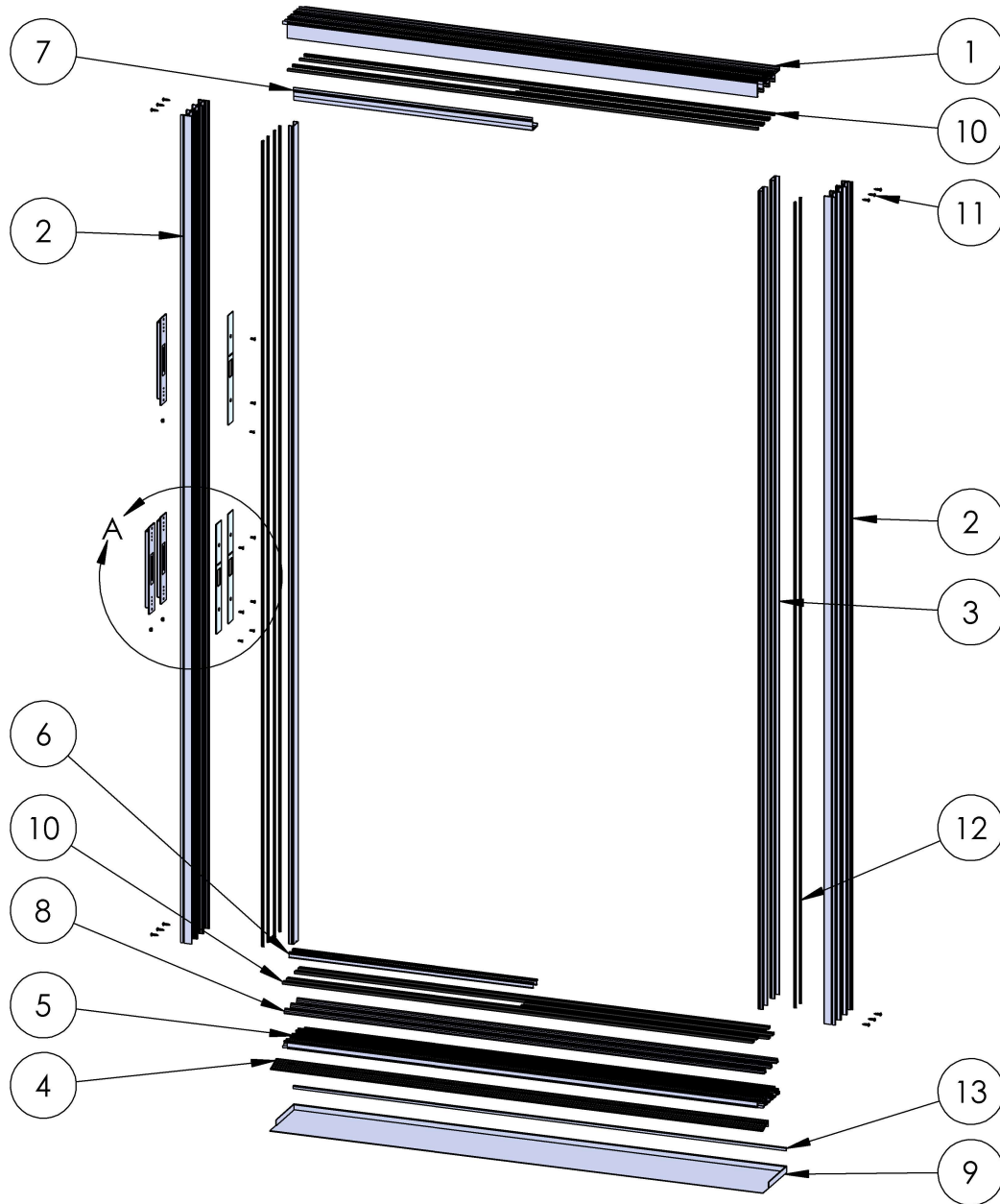
BOM Table		
ITEM NO.	DESCRIPTION	PAGE #
1	Frame Assembly	2-3
2	Sliding Panel Assembly	4-5
3	Screen Assembly	6-7
4	Fixed Panel Assembly	8

Description Table of Contents	
File Name Series 3070 Narrow XO with Screen Assembly	REV C
Released 8/17/2023	SHEET 1 OF 8

**PROPRIETARY AND CONFIDENTIAL**

THE INFORMATION CONTAINED IN THIS DRAWING IS THE SOLE PROPERTY OF FLEETWOOD WINDOWS & DOORS.  
ANY REPRODUCTION IN PART OR AS A WHOLE WITHOUT THE WRITTEN PERMISSION OF FLEETWOOD WINDOWS & DOORS IS PROHIBITED.

# ASSEMBLY / PARTS LIST (B.O.M.)



**PROPRIETARY AND CONFIDENTIAL**  
THE INFORMATION CONTAINED IN THIS DRAWING IS THE SOLE PROPERTY OF FLEETWOOD WINDOWS & DOORS.  
ANY REPRODUCTION IN PART OR AS A WHOLE WITHOUT THE WRITTEN PERMISSION OF FLEETWOOD WINDOWS & DOORS IS PROHIBITED.

Description Frame Assembly		
File Name Series 3070 Narrow XO with Screen Assembly		REV C
Released	8/17/2023	SHEET 2 OF 8

# ASSEMBLY / PARTS LIST (B.O.M.)

## Extrusions

ITEM NO.	PART NUMBER	DESCRIPTION	QTY.
1	3703	Multi-Slide Head (3 Track)	1
2	3713	Jamb (3 Track)	2
3	3710	Jamb Filler	3
4	3752	Sill Riser (optional)	1
5	3743	Multi-Slide Sill (3 Track)	1
6	3747	Sill Filler	2
7	3014	Head Filler	1
8	FW1020	Stainless Steel Track	3

## Hardware

ITEM NO.	PART NUMBER	DESCRIPTION	QTY.
9	-	Sill Pan	1
10	19118	Small Fin Seal Mohair	18
11	20347, 20348	#10 PHP Screw, .75", SS, (SS, BL)	12
12	25757	Q-Lon Foam Seal	6
13	23220	Sillpan Hem Cover	1
14	24068	Backup Plate (With Dust Cover)	3
15	24067	Strike Plate	3
16	20278	#10-32 FHP-B-UC, 1/2", SS, Clear	6
17	25498	#8-32 Locknut with Nylon-Insert	3
18	25497	#8-32 FHP, UC, 1/2", SS	3

Description  
Frame Assembly B.O.M.

File Name  
Series 3070 Narrow XO  
with Screen Assembly

REV  
**B**

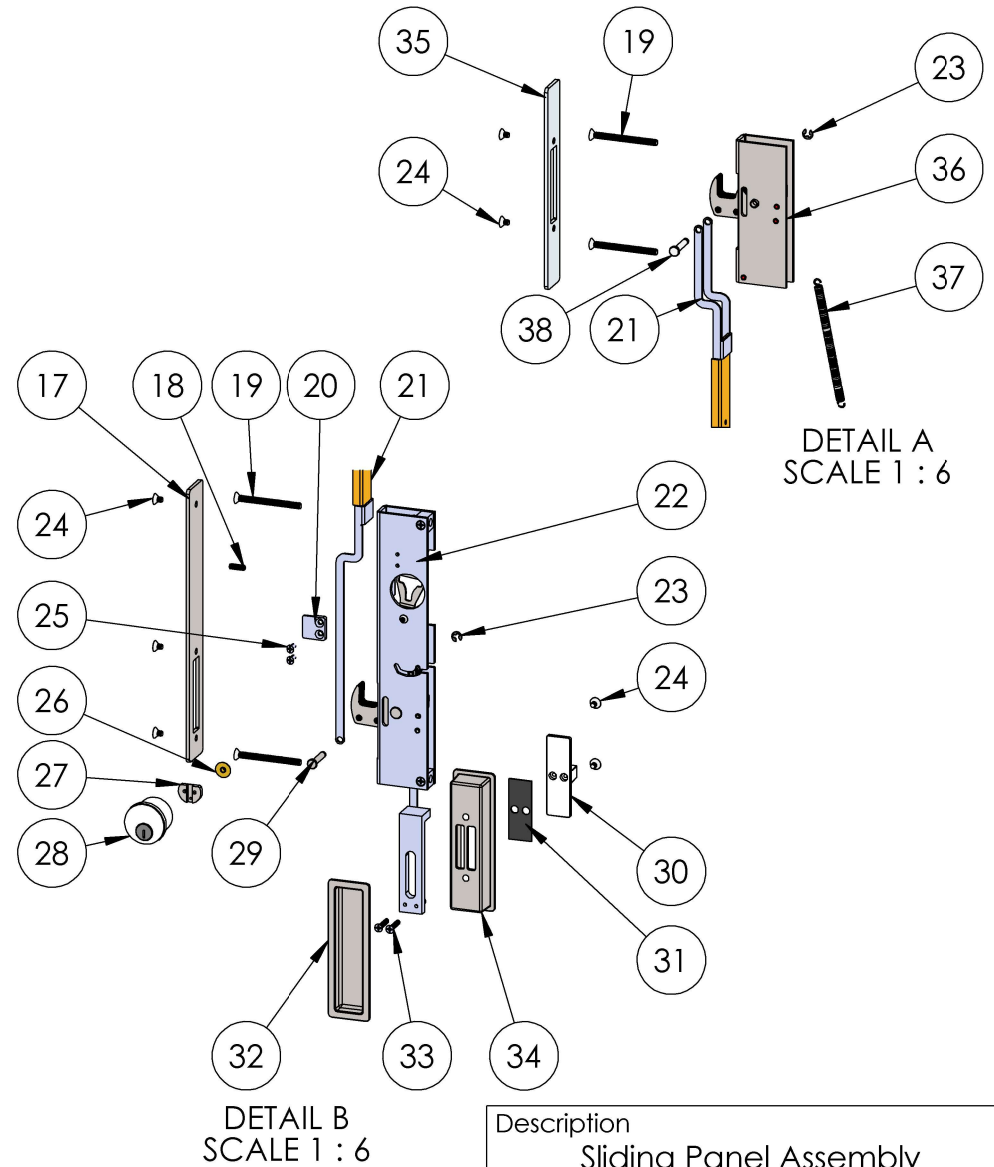
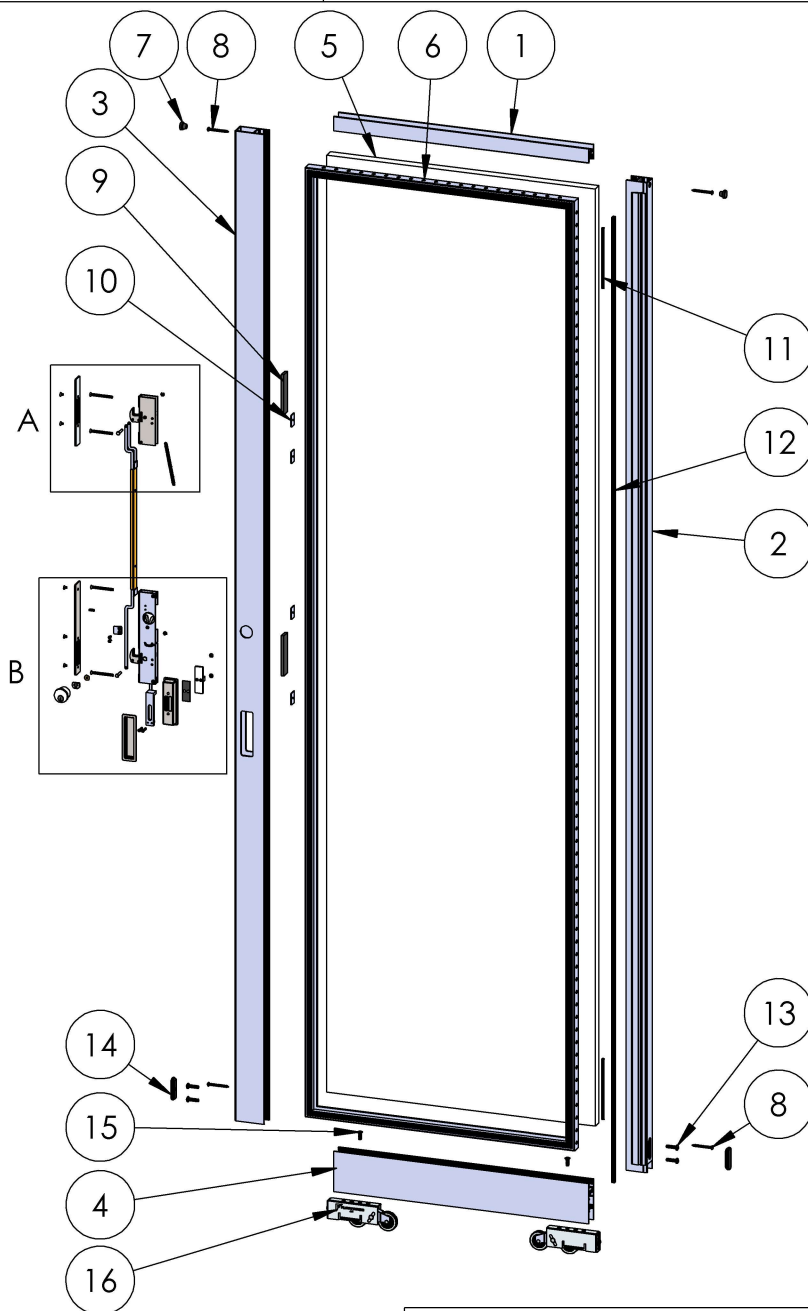
**PROPRIETARY AND CONFIDENTIAL**

THE INFORMATION CONTAINED IN THIS DRAWING IS THE SOLE PROPERTY OF FLEETWOOD WINDOWS & DOORS.  
ANY REPRODUCTION IN PART OR AS A WHOLE WITHOUT THE WRITTEN PERMISSION OF FLEETWOOD WINDOWS & DOORS IS PROHIBITED.

Released 8/17/2023

SHEET 3 OF 8

# ASSEMBLY / PARTS LIST (B.O.M.)



**PROPRIETARY AND CONFIDENTIAL**  
THE INFORMATION CONTAINED IN THIS DRAWING IS THE SOLE PROPERTY OF FLEETWOOD WINDOWS & DOORS.  
ANY REPRODUCTION IN PART OR AS A WHOLE WITHOUT THE WRITTEN PERMISSION OF FLEETWOOD WINDOWS & DOORS IS PROHIBITED.

Description Sliding Panel Assembly		
File Name Series 3070 Narrow XO with Screen Assembly		REV B
Released	8/17/2023	SHEET 4 OF 8



# ASSEMBLY / PARTS LIST (B.O.M.)

## EXTRUSIONS

ITEM NO.	PART NUMBER	DESCRIPTION	QTY.
1	3004	Top Rail	1
2	3006	Interlock	1
3	3005	Narrow Lock Stile	1
4	3709	Bottom Rail	1

## HARDWARE

ITEM NO.	PART NUMBER	DESCRIPTION	QTY.
5	-	Glass	1
6	22909	1" Glazing Vinyl	1
7	20635	Small Round Door Bumper	2
8	20355	#10 PHP - A, 2", SS, Clear	4
9	18620	Setting Block, .25 in.	2
10	18671	Back Up Plate # 10-32 x 0.075" Thk.	4
11	24672	Screen Spline .230" x 6"	2
12	19117	Large Fin Seal Mohair	1
13	20359	#1/4-20 PHP - B, 1", SS, Clear	4
14	18630	Oval Plug- Short	2
15	20305	#1/4-20 FHP-B Screw, .75"	2
16	20514	A2 Roller Assembly	2
17	25210	Archetype Narrow Latch Face Plate	1
18	25330	#8-32 x 1/2" Set Screw Narrow Arch. Cyl.	1
19	25928	#10-32 FHP Screw, 2.188"	4
20	26170	Archetype Narrow Secondary Latch Linkage Guide	1
21	26169	Linkage for Archetype Narrow Secondary Latch XO	1
22	25319	Archetype Narrow Latch XO	1
23	24129	E-Style Retaining Ring	2
24	24076, 25325	#8-32 FHS-B Screw, .25" (SS, BL)	7
25	25890	#6-32 FHP-B Screw, .375"	2

## HARDWARE

ITEM NO.	PART NUMBER	DESCRIPTION	QTY.
26	24781	Archetype Brass Bushing	1
27	24780	Key Cylinder Cam	1
28	25356, 24782, 24784, 24783	Archetype Keyed Cylinder [SS- (KA, KD), BL- (KA, KD)]	1
29	26172	Clevis Pin (Archetype Narrow Primary Latch)	1
30	25317, 25318	Archetype Narrow Flush Actuator (BL, SS)	1
31	26245	Slider Friction Pad	1
32	25311, 25312	Archetype Narrow Flush Ext. Pocket (BL, SS)	1
33	25755	#6-32 FHP with Nylock, .75"	2
34	25314, 25315	Archetype Narrow Flush Int. Pocket (BL, SS)	1
35	26225	Archetype Narrow Secondary Latch Faceplate	1
36	26166	Archetype Narrow Secondary Latch	1
37	26171	Spring Compensation	1
38	24128	Clevis Pin (Archetype Narrow Secondary Latch)	1

Description  
Sliding Panel Assembly B.O.M.

File Name  
Series 3070 Narrow XO  
with Screen Assembly

REV  
**B**

Released 8/17/2023

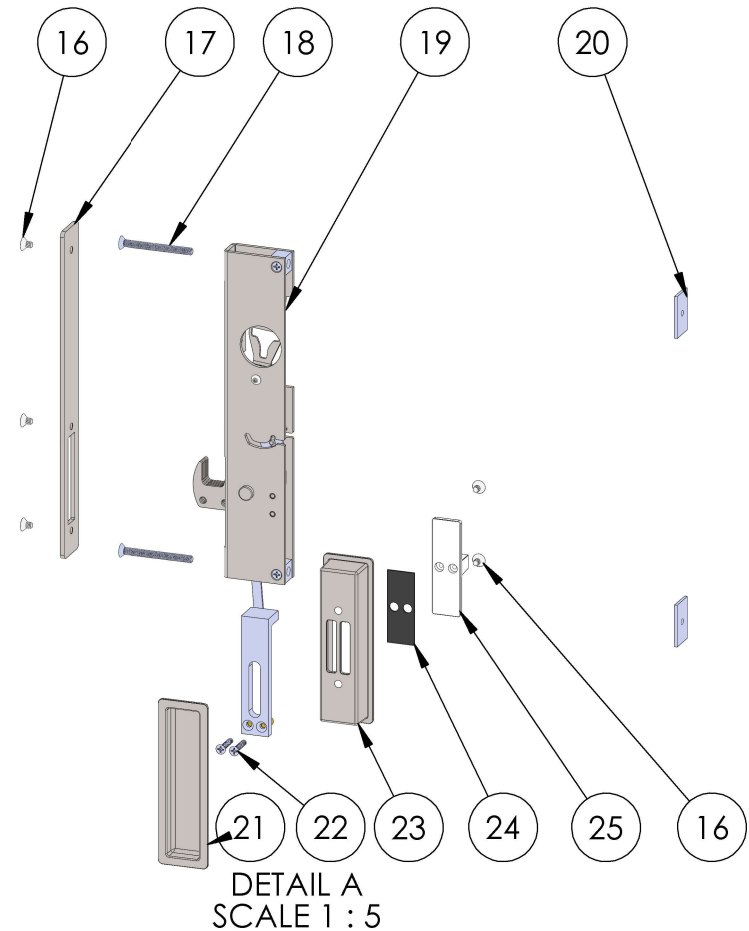
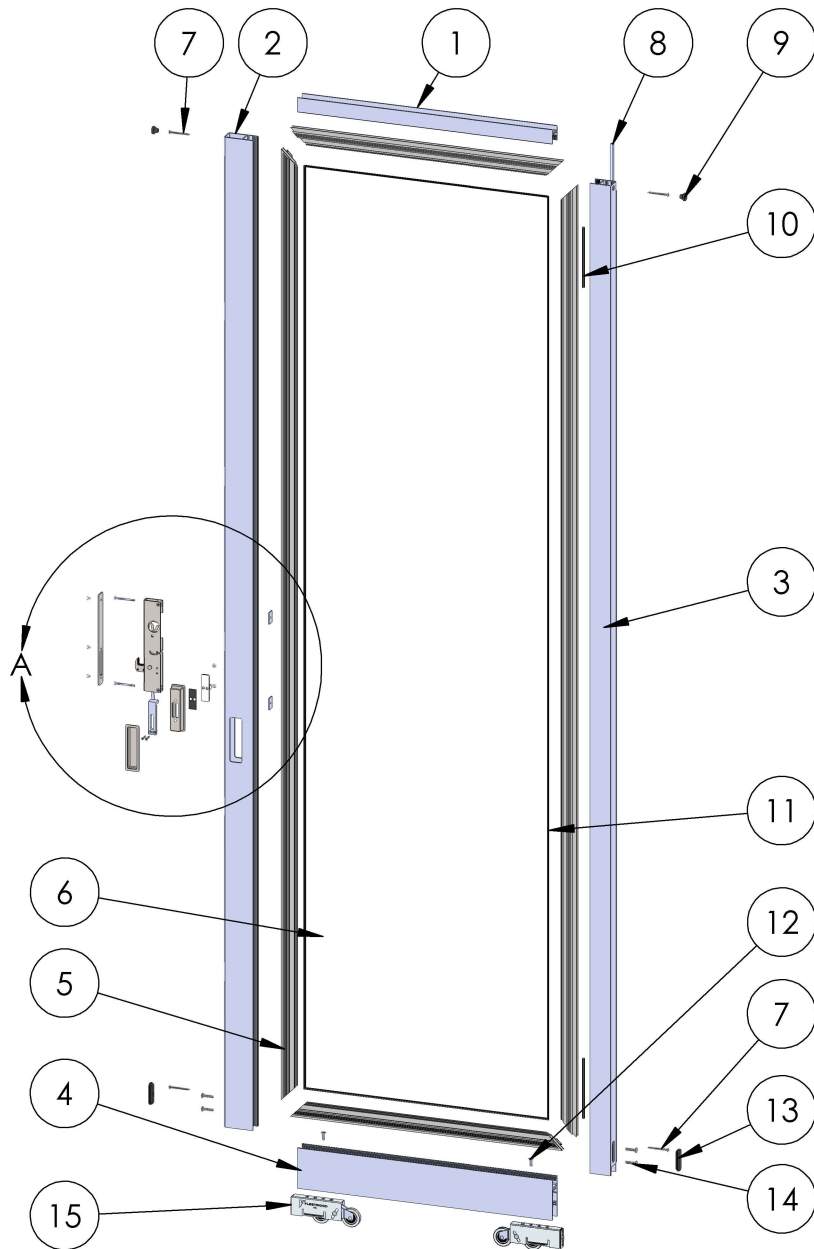
SHEET 5 OF 8

**PROPRIETARY AND CONFIDENTIAL**

THE INFORMATION CONTAINED IN THIS DRAWING IS THE SOLE PROPERTY OF FLEETWOOD WINDOWS & DOORS.

ANY REPRODUCTION IN PART OR AS A WHOLE WITHOUT THE WRITTEN PERMISSION OF FLEETWOOD WINDOWS & DOORS IS PROHIBITED.

# ASSEMBLY / PARTS LIST (B.O.M.)



**PROPRIETARY AND CONFIDENTIAL**  
THE INFORMATION CONTAINED IN THIS DRAWING IS THE SOLE PROPERTY OF FLEETWOOD WINDOWS & DOORS.  
ANY REPRODUCTION IN PART OR AS A WHOLE WITHOUT THE WRITTEN PERMISSION OF FLEETWOOD WINDOWS & DOORS IS PROHIBITED.

Description Screen Panel Assembly	
File Name Series 3070 Narrow XO with Screen Assembly	REV <b>B</b>
Released 8/17/2023	SHEET 6 OF 8

# ASSEMBLY / PARTS LIST (B.O.M.)

## EXTRUSIONS

ITEM NO.	PART NUMBER	DESCRIPTION	QTY.
1	3004	Top Rail	1
2	3005	Narrow Lock Stile	1
3	3006	Interlock	1
4	3709	Bottom Rail	1
5	3766	Screen Adapter	4

## HARDWARE

ITEM NO.	PART NUMBER	DESCRIPTION	QTY.
6	-	Screen Mesh	1
7	20355	#10 PHP - A, 2", SS, Clear	4
8	19117	Large Fin Seal Mohair	1
9	20635	Small Round Door Bumper	2
10	24672	Screen Spline .230" x 6"	2
11	19130	Screen Rubber Spline .160"	1
12	20305	#1/4-20 FHP-B Screw, .75"	2
13	18630	Oval Plug- Short	2
14	20359	#1/4-20 PHP - B, 1", SS, Clear	4
15	20514	A2 Roller Assembly	2
16	24076, 25325	#8-32 FHS-B Screw, .25" (SS, BL)	5
17	25309	Archetype Narrow Latch Face Plate	1

## HARDWARE

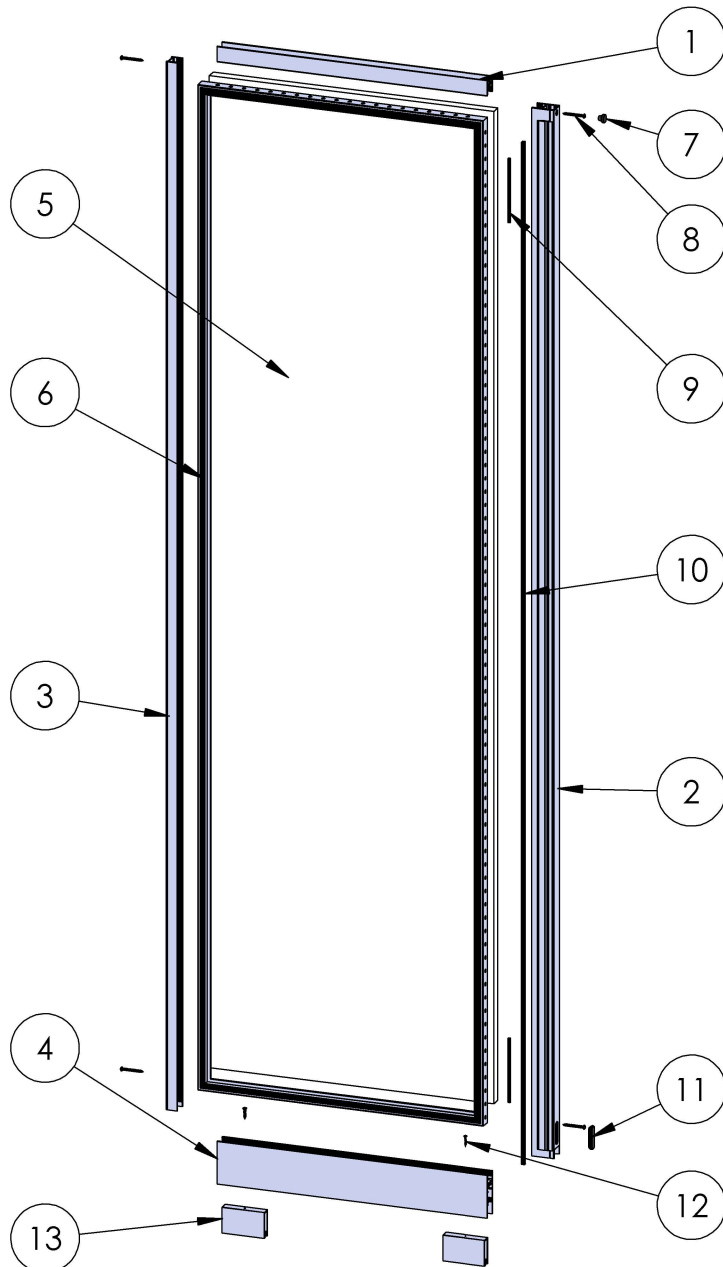
ITEM NO.	PART NUMBER	DESCRIPTION	QTY.
18	25349	#10-32 FHP - B, 2.0", SS, Clear	2
19	25319	Archetype Narrow Latch XO	1
20	18671	Back Up Plate # 10-32 x 0.075" Thk.	2
21	25311, 25312	Archetype Narrow Flush Ext. Pocket (BL, SS)	1
22	25755	#6-32 FHP with Nylock, .75"	2
23	25314, 25315	Archetype Narrow Flush Int. Pocket (BL, SS)	1
24	26245	Slider Friction Pad	1
25	25317, 25318	Archetype Narrow Flush Actuator (BL, SS)	1

**PROPRIETARY AND CONFIDENTIAL**

THE INFORMATION CONTAINED IN THIS DRAWING IS THE SOLE PROPERTY OF FLEETWOOD WINDOWS & DOORS.  
ANY REPRODUCTION IN PART OR AS A WHOLE WITHOUT THE WRITTEN PERMISSION OF FLEETWOOD WINDOWS & DOORS IS PROHIBITED.

Description Screen Assembly B.O.M.	
File Name Series 3070 Narrow XO with Screen Assembly	REV <b>B</b>
Released 8/17/2023	SHEET 7 OF 8

# ASSEMBLY / PARTS LIST (B.O.M.)



## EXTRUSIONS

ITEM NO.	PART NUMBER	DESCRIPTION	QTY.
1	3004	Top Rail	1
2	3006	Interlock	1
3	3008	Fixed Stile	1
4	3709	Bottom Rail	1

## HARDWARE

ITEM NO.	PART NUMBER	DESCRIPTION	QTY.
5	-	Glass	1
6	22909	1" Glazing Vinyl	1
7	20635	Small Round Panel Plug	1
8	20355	#10 PHP - A, 2", SS, Clear	4
9	24672	Screen Spline .230" x 6"	2
10	19117	Large Fin Seal Mohair	1
11	18630	Oval Plug- Short	1
12	20293	#10 FHP - A, 1", SS, Clear	2
13	25613	Fixed Panel Block	2

Description  
Fixed Panel Assembly

File Name  
Series 3070 Narrow XO  
with Screen Assembly

REV  
B

Released 8/17/2023

SHEET 8 OF 8

### PROPRIETARY AND CONFIDENTIAL

THE INFORMATION CONTAINED IN THIS DRAWING IS THE SOLE PROPERTY OF FLEETWOOD WINDOWS & DOORS.  
ANY REPRODUCTION IN PART OR AS A WHOLE WITHOUT THE WRITTEN PERMISSION OF FLEETWOOD WINDOWS & DOORS IS PROHIBITED.