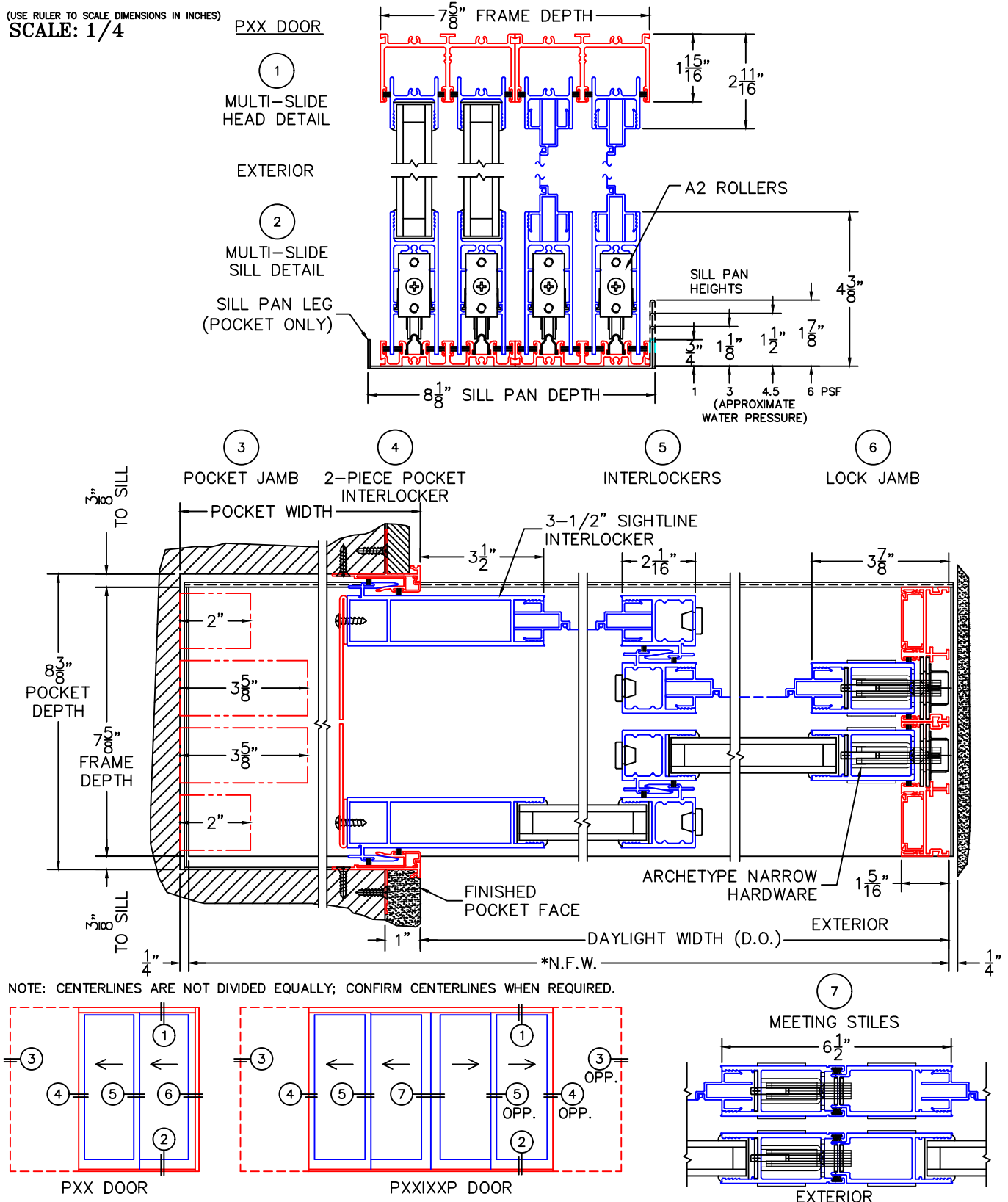
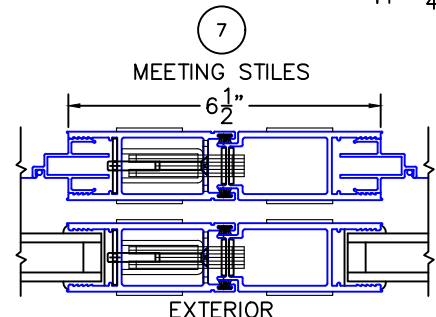
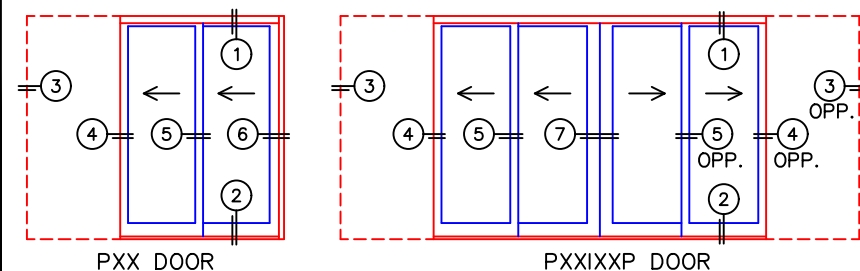


(USE RULER TO SCALE DIMENSIONS IN INCHES)
SCALE: 1/4"

**MULTI-SLIDE POCKET DOOR DETAILS
WITH SCREENS**

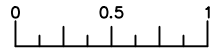


NOTE: CENTERLINES ARE NOT DIVIDED EQUALLY; CONFIRM CENTERLINES WHEN REQUIRED.



-GLASS PENETRATION: 11/16"
-ENCLOSED PX AND XP DOORS MAY REQUIRE
POCKET DEMO FOR PANEL REMOVAL
-*NET FRAME WIDTH DOES NOT INCLUDE SILL PAN.
-SILL PAN EXTENDS 1/8" BEYOND EACH JAMB.

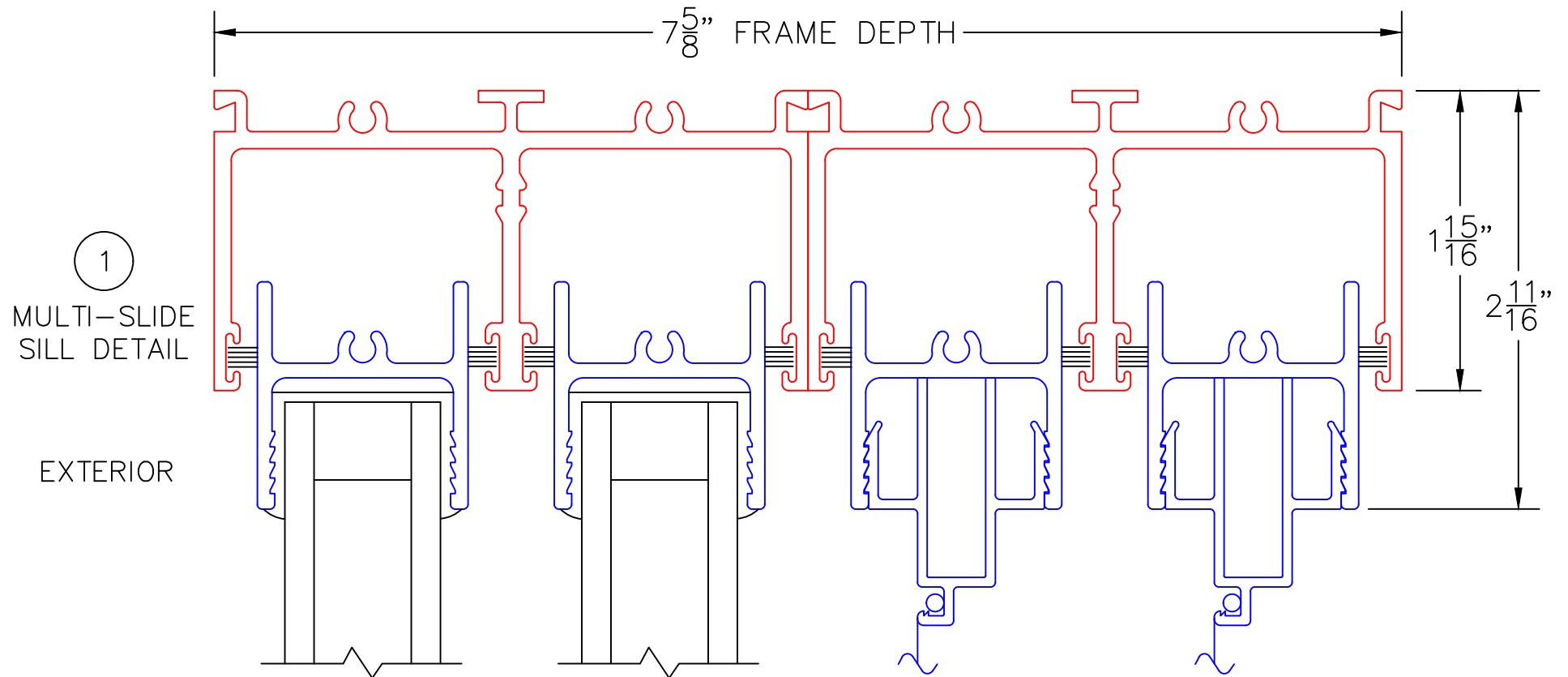
-FOR ADDITIONAL OPTIONS AND UPGRADES
SEE DRAWINGS 3070-07, 3070-08 & 3070-11.
-EXTERIOR RATED PRODUCTS HAVE WEEP
SLOTS ON HORIZONTAL SILLS.

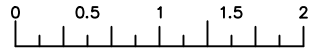


(USE RULER TO SCALE DIMENSIONS IN INCHES)

SCALE: FULL

PXX DOOR





(USE RULER TO SCALE DIMENSIONS IN INCHES)

SCALE: 3/4

PXX DOOR

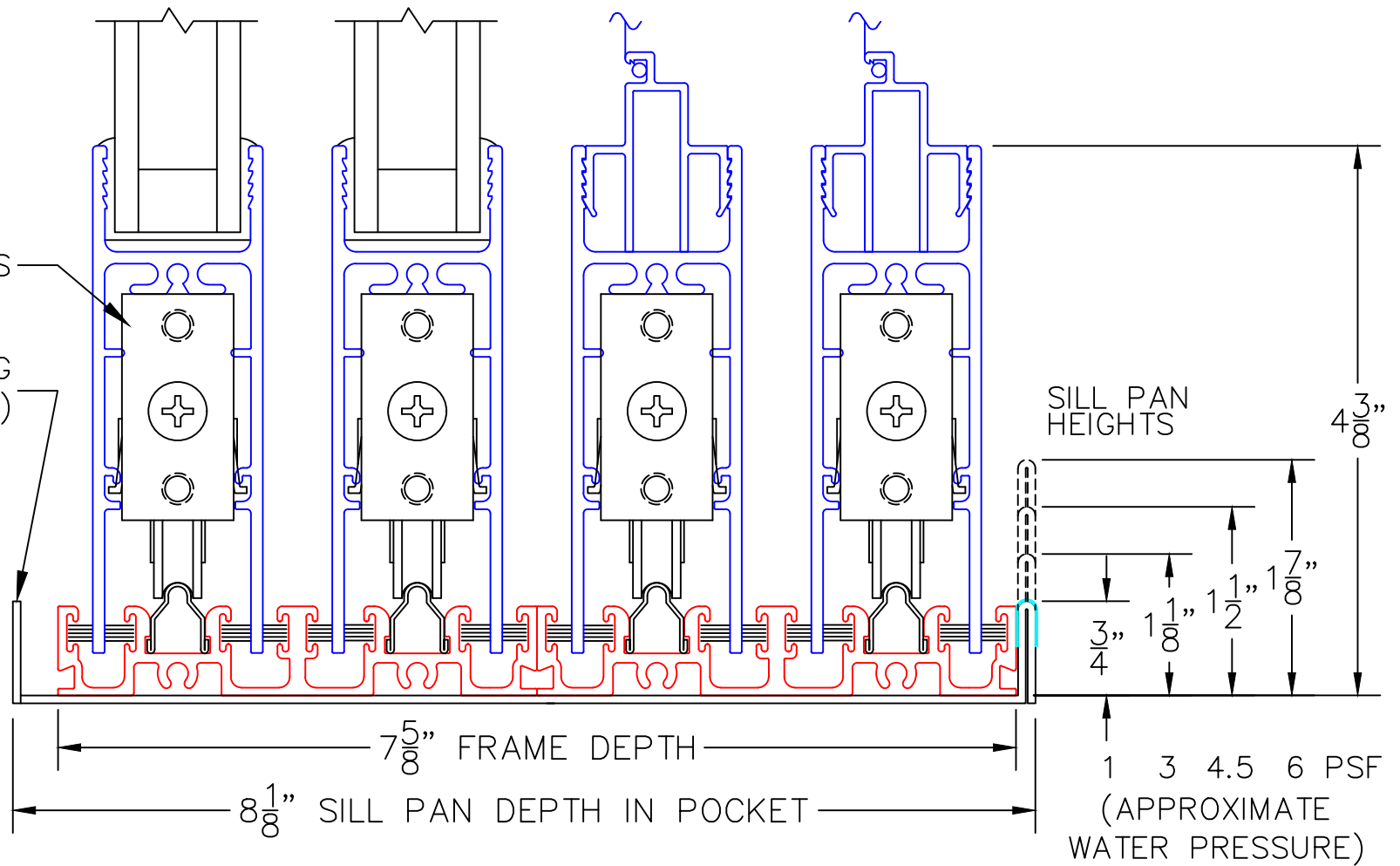
EXTERIOR

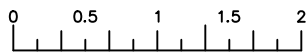
2

MULTI-SLIDE
SILL DETAIL

A2 ROLLERS

SILL PAN LEG
(POCKET ONLY)





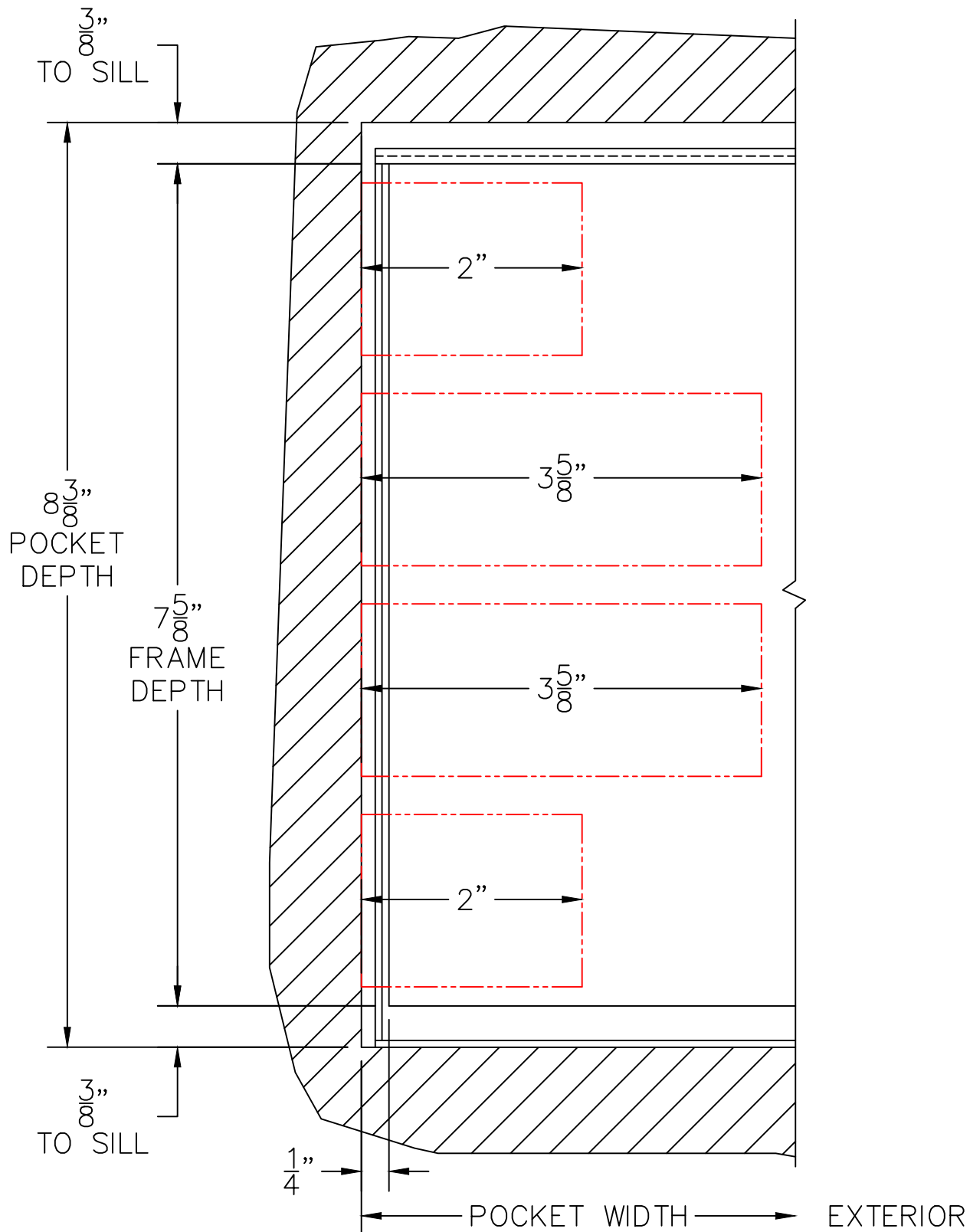
(USE RULER TO SCALE DIMENSIONS IN INCHES)

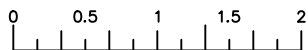
SCALE: 3/4

PXX DOOR

3

POCKET JAMB





(USE RULER TO SCALE DIMENSIONS IN INCHES)

SCALE: 3/4

PXX DOOR

3-1/2" SIGHTLINE
INTERLOCKER

4
2-PIECE
POCKET
INTERLOCKER

3 1/2"

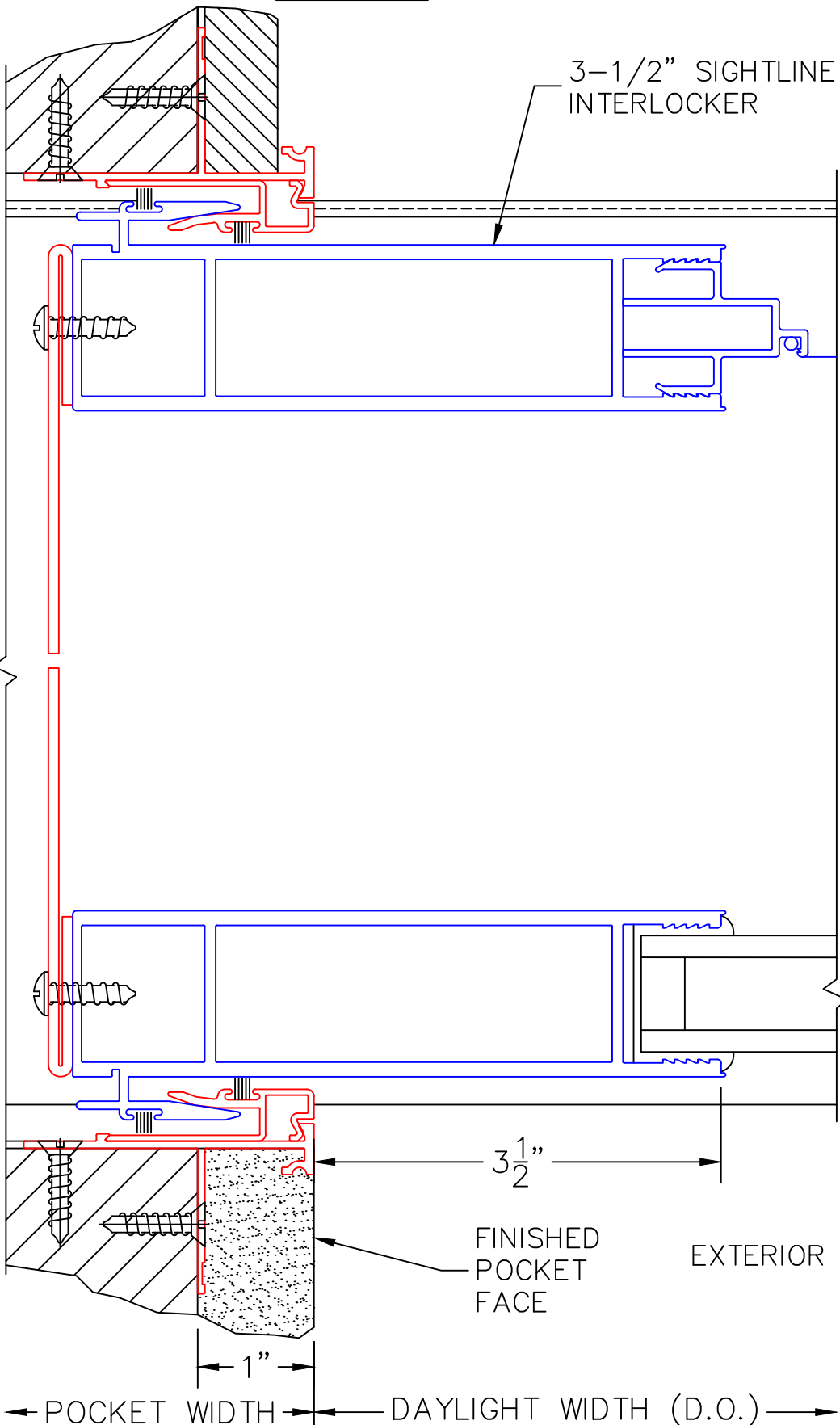
FINISHED
POCKET
FACE

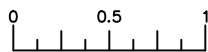
EXTERIOR

1"

POCKET WIDTH

DAYLIGHT WIDTH (D.O.)





(USE RULER TO SCALE DIMENSIONS IN INCHES)

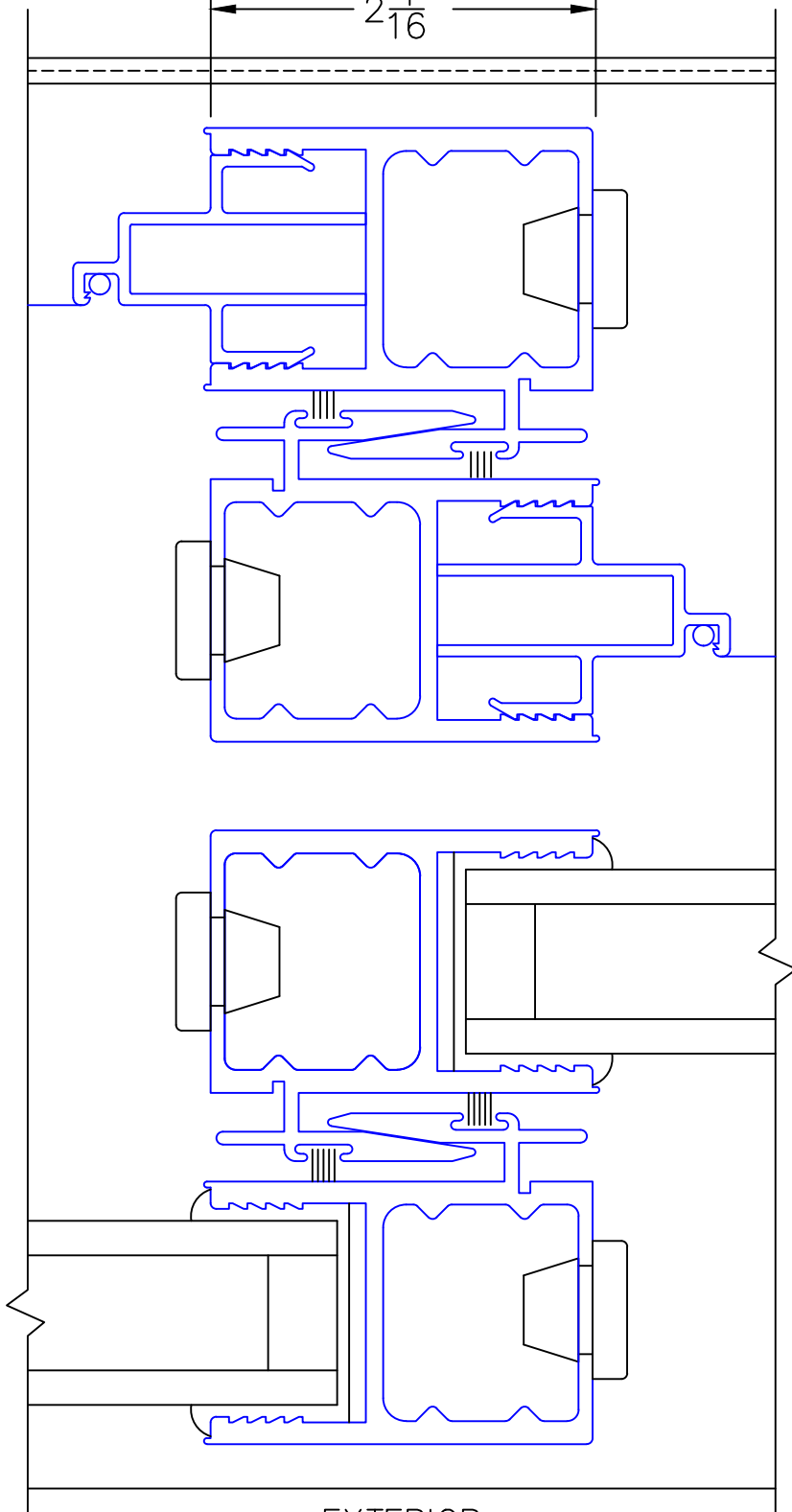
SCALE: FULL

PXX DOOR

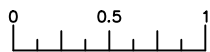
5

INTERLOCKERS

$2\frac{1}{16}"$



EXTERIOR



(USE RULER TO SCALE DIMENSIONS IN INCHES)

SCALE: FULL

6

PXX DOOR

LOCK JAMB

$3\frac{7}{8}"$

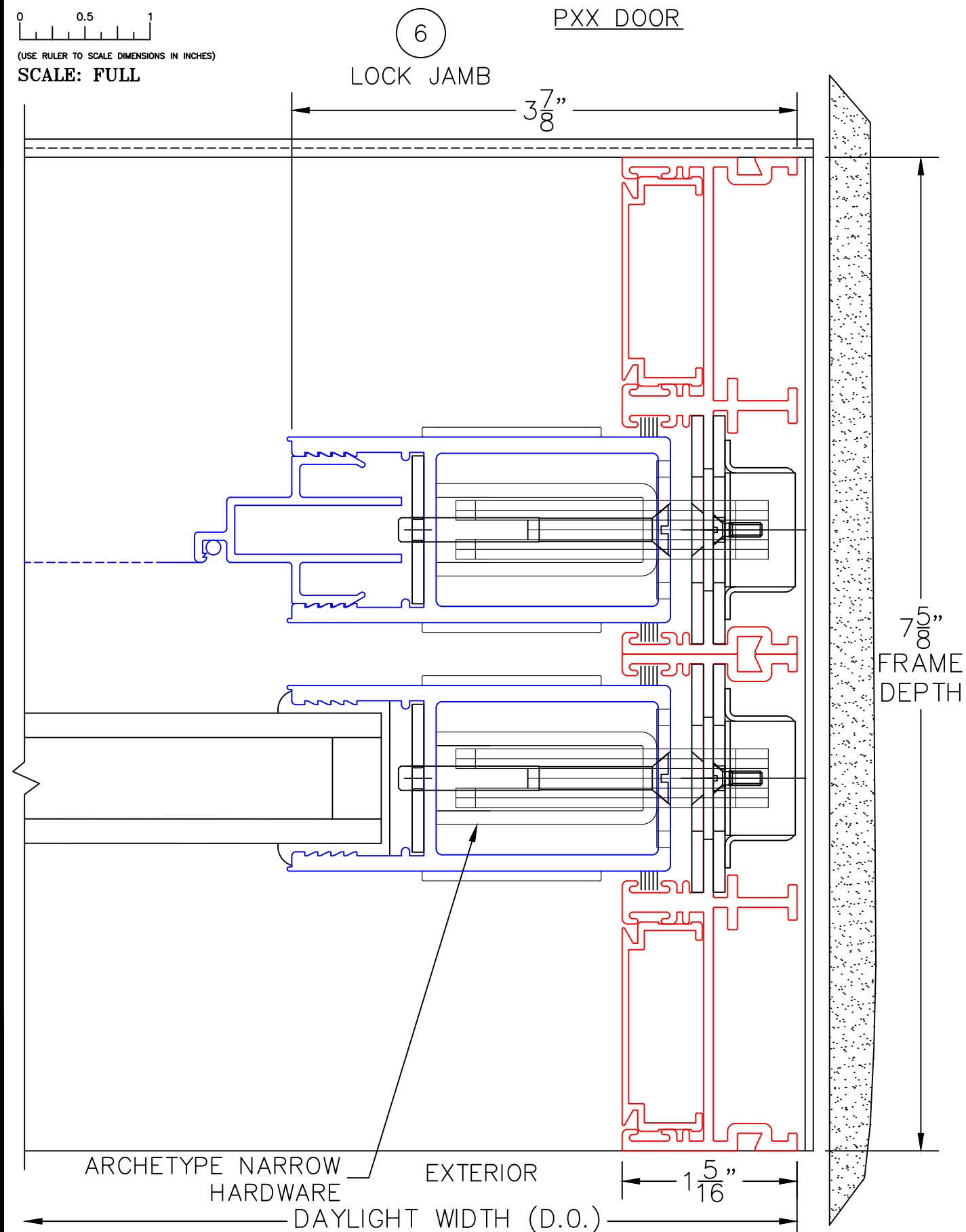
$7\frac{5}{8}"$
FRAME
DEPTH

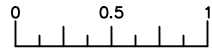
ARCHETYPE NARROW
HARDWARE

EXTERIOR

$1\frac{5}{16}"$

DAYLIGHT WIDTH (D.O.)





(USE RULER TO SCALE DIMENSIONS IN INCHES)

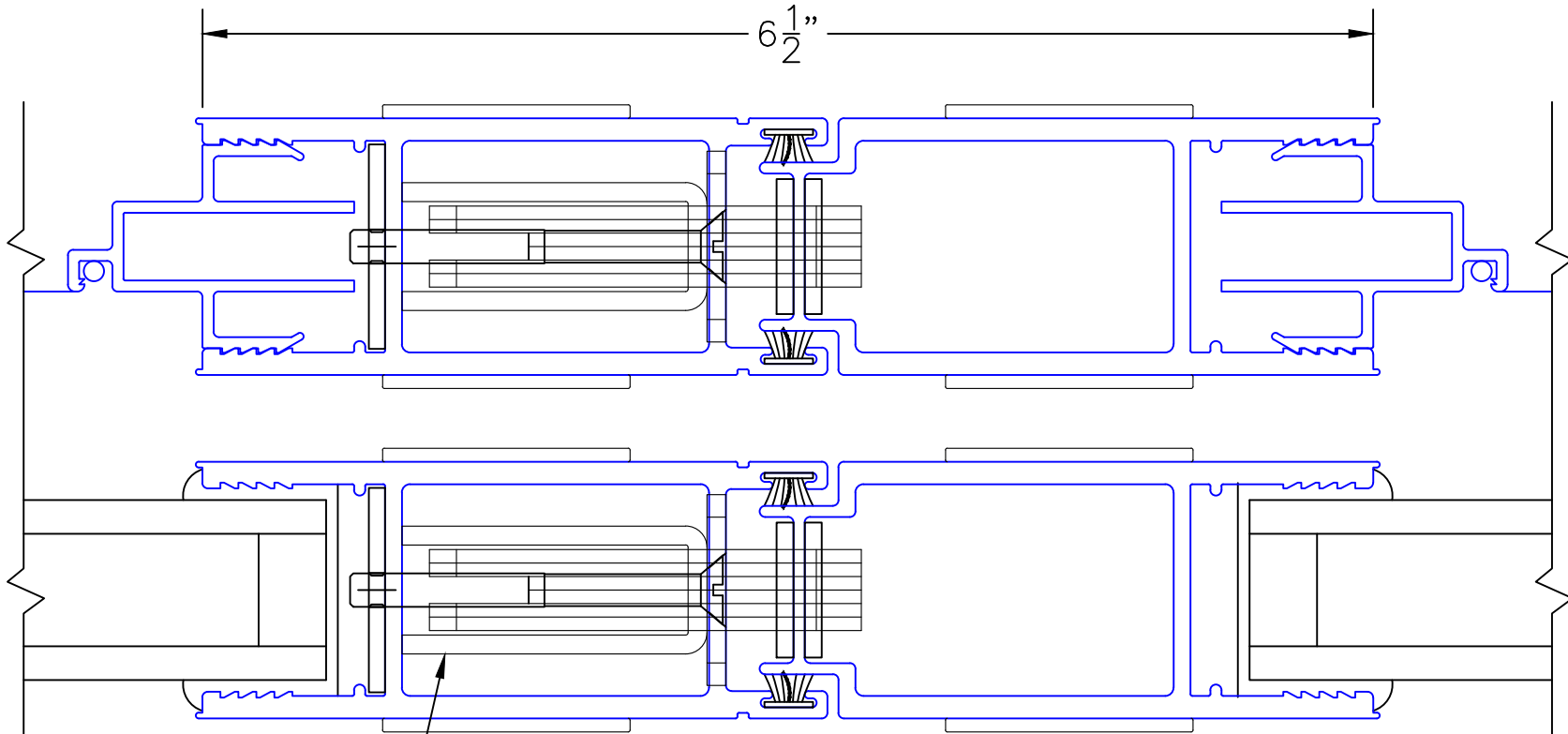
SCALE: FULL

PXXIXXP DOOR

7

MEETING
STILES

6 ¹/₂"



ARCHETYPE NARROW
HARDWARE

EXTERIOR