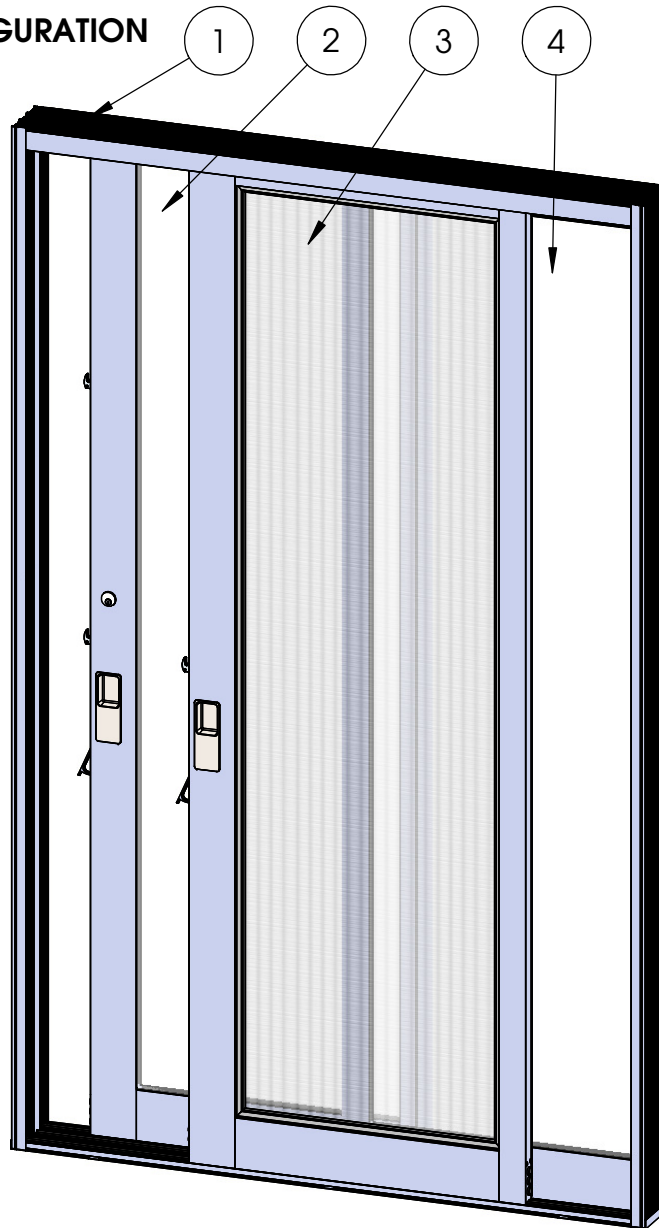


ASSEMBLY / PARTS LIST (B.O.M.)

SERIES: 3070-T
TYPE: XO WITH SCREEN CONFIGURATION



ITEM NO.	DESCRIPTION	PAGE #
1	XO Frame Assembly	2-3
2	X Panel Assembly	4-5
3	Screen Panel Assembly	6-7
4	O Panel Assembly	8
5	Tables	9

NOTES:

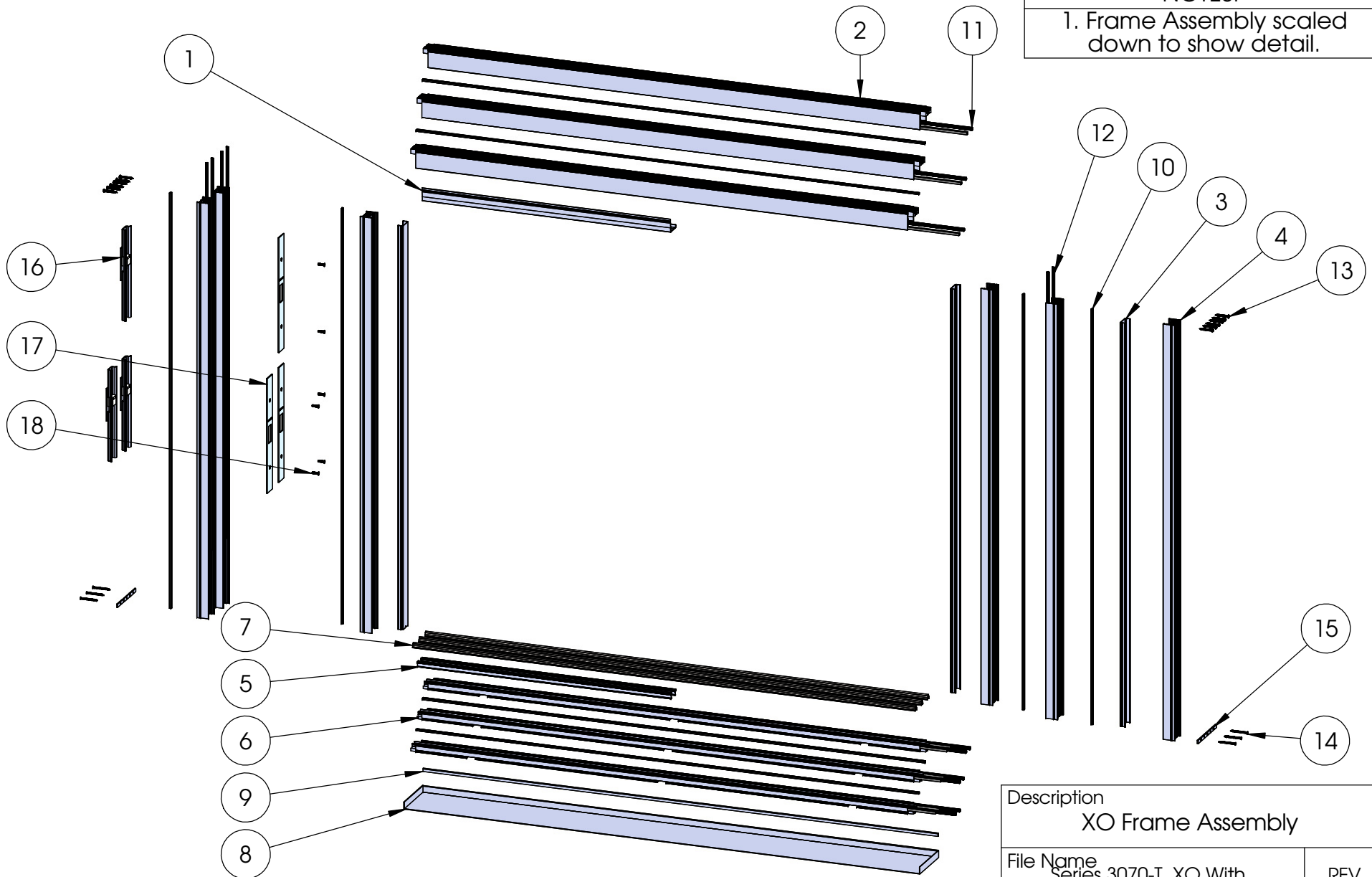
1. Secondary Latch used only when net frame height $\geq 96"$.
2. Panels are numbered from left to right as viewed from the exterior.

Description Table of Contents		
File Name Series 3070-T, XO With Screen Assembly		REV
Released	2/10/2021	SHEET 1 OF 9

ASSEMBLY / PARTS LIST (B.O.M.)

NOTES:

1. Frame Assembly scaled down to show detail.



PROPRIETARY AND CONFIDENTIAL
THE INFORMATION CONTAINED IN THIS DRAWING IS THE SOLE PROPERTY OF FLEETWOOD WINDOWS & DOORS.
ANY REPRODUCTION IN PART OR AS A WHOLE WITHOUT THE WRITTEN PERMISSION OF FLEETWOOD WINDOWS & DOORS IS PROHIBITED.

Description XO Frame Assembly		
File Name Series 3070-T, XO With Screen Assembly		REV
Released	2/10/2021	SHEET 2 OF 9

ASSEMBLY / PARTS LIST (B.O.M.)

EXTRUSIONS

ITEM NO.	PART NUMBER	DESCRIPTION	QTY.
1	3014	Head Filler/Closer	1
2	3701	Head 1-Track Assembly	3
3	3710	Jamb Filler	3
4	3711	Jamb 1-Track Assembly	6
5	3747	Sill Filler	2
6	3749	Thermal Sill 1-Track Assembly	3

HARDWARE

ITEM NO.	PART NUMBER	DESCRIPTION	QTY.
7	23006	Stainless Steel Track 9/16"	3
8	3720	Sillpan	1
9	23220	Sillpan Hem Cover	1
10	23025	PVC MS Track Joiner	8
11	19118	Small Fin Seal Mohair	18
12	25757	Q-Lon Foam Seal	6
13	20353	# 10 PHP - A, 1.5 in, SS, Clear	12
14	20258	# 8 FHP - A, 2 in, SS, Clear	6
15	25186	Rectangular Washer	6
16	24790	Backup Plate Assembly	3
17	24067	Strike Plate	3
18	25073	# 10-32 FHP - B, .75, SS, Clear	6

Description

XO Frame B.O.M.

File Name

Series 3070-T, XO With
Screen Assembly

REV

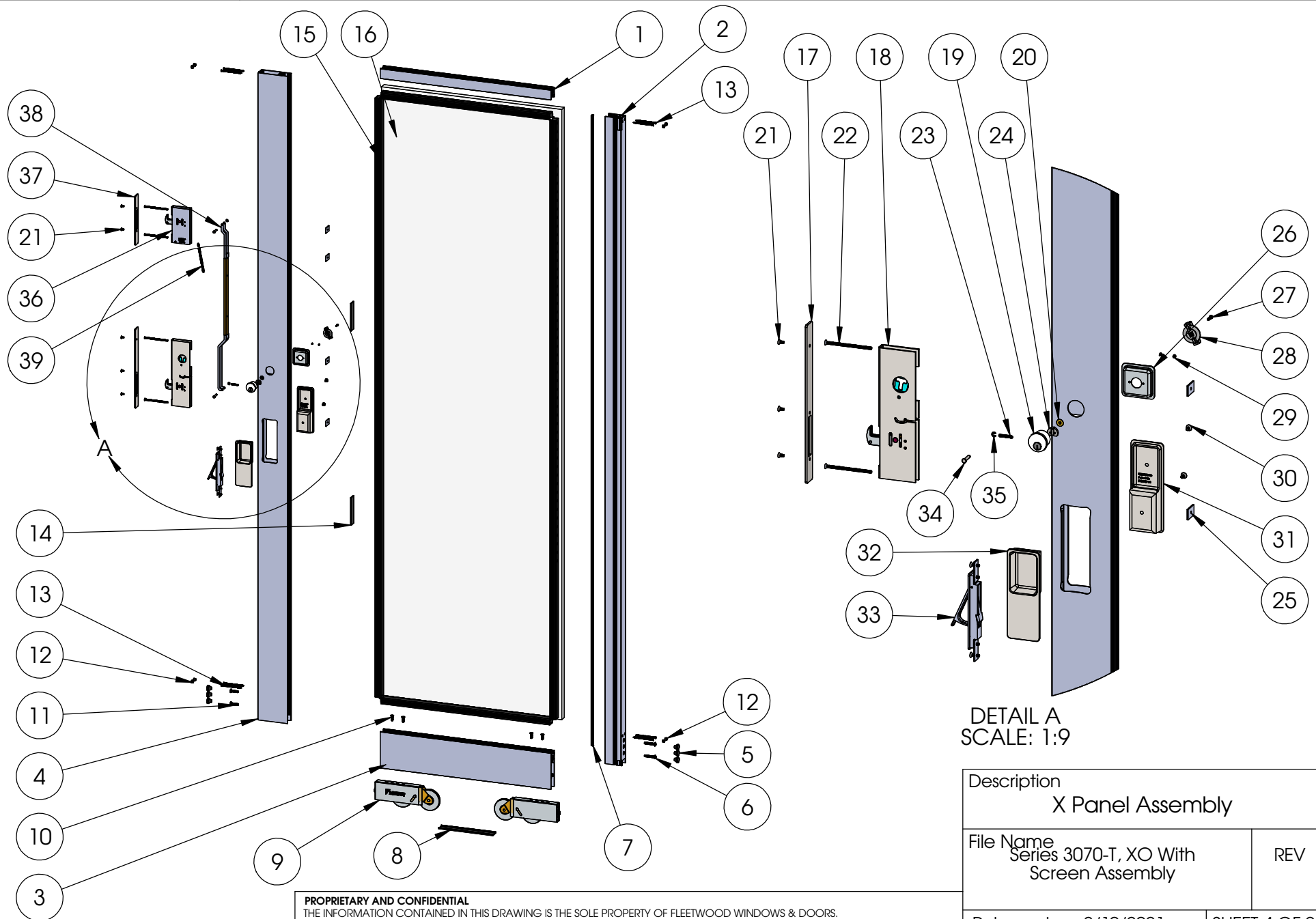
PROPRIETARY AND CONFIDENTIAL

THE INFORMATION CONTAINED IN THIS DRAWING IS THE SOLE PROPERTY OF FLEETWOOD WINDOWS & DOORS.
ANY REPRODUCTION IN PART OR AS A WHOLE WITHOUT THE WRITTEN PERMISSION OF FLEETWOOD WINDOWS & DOORS IS PROHIBITED.

Released 2/10/2021

SHEET 3 OF 9

ASSEMBLY / PARTS LIST (B.O.M.)



PROPRIETARY AND CONFIDENTIAL
THE INFORMATION CONTAINED IN THIS DRAWING IS THE SOLE PROPERTY OF FLEETWOOD WINDOWS & DOORS.
ANY REPRODUCTION IN PART OR AS A WHOLE WITHOUT THE WRITTEN PERMISSION OF FLEETWOOD WINDOWS & DOORS IS PROHIBITED.

Description X Panel Assembly		
File Name Series 3070-T, XO With Screen Assembly		REV
Released	2/10/2021	SHEET 4 OF 9

ASSEMBLY / PARTS LIST (B.O.M.)

EXTRUSIONS

ITEM NO.	PART NUMBER	DESCRIPTION	QTY.
1	3075	Thermal Top Rail DG	1
2	3727	Thermal Interlock Sliding Assembly	1
3	3310	Thermal Bottom Rail	1
4	3793	Thermal Lock Stile (Shear Free Strut)	1

HARDWARE

ITEM NO.	PART NUMBER	DESCRIPTION	QTY.
5	20635	Small Round Panel Plug (All Doors)	6
6	25724	1/4-20 PHP - B, 1.5 in, SS, Clear	2
7	19117	Large Fin Seal Mohair	1
8	22938	PVC Rail Spreader, BL798	1
9	18883	A3 Roller, Precision - Tandem	2
10	20305	1/4-20 FHP - B, 3/4 in, SS Clear	4
11	20359	1/4-20 PHP - B, 1 in, SS, Clear	2
12	25907	Round Plug - Plastic - 5/16"	8
13	20262	#8 FHP Screw, 3 in, SS, Clear	8
14	18621	Setting Block (1/8 in x 4 in)	2
15	22909	1 inch Glazing Vinyl (Shown)	1
16	-	Glass	1
17	26685	Archetype Latch Faceplate	1
18	24077	Archetype XO Primary Latch, RH Latch	1
19	See Table A	Key Cylinder Set	1
20	24781	Brass Bushing - Key Cylinder	1
21	24076, 25325	#8-32 FHS, 3/8" Hex Socket Flat (SS, Black)	5
22	25560	#10-32 FHP-B Screw, 3.375 in.	4

HARDWARE

ITEM NO.	PART NUMBER	DESCRIPTION	QTY.
23	24935	#8-32 x 1" Set Screw (Reg. Arch. Cyl.)	1
24	24780	Cam - (for Archetype Key Cylinder)	1
25	18671	Back Up Plate # 10-32 x 0.075 Thk.	4
26	24767, 24081	Archetype Actuator Pocket, XO (SS, BLK)	1
27	24072, 24094	#6-32, Hex Socket Head Cap, Self Locking, 1/2", SS (Clear, Black)	1
28	24079, 24766	Archetype Actuator (Black, SS)	1
29	24074	#4-40 FHP-UC, .188 in, SS, Clear	2
30	24087, 24093	#10-32 FH Socket Screw, 0.375 in (SS, Black)	2
31	24089, 24091	Archetype Handle, Inside, with Gasket (SS, BLK)	1
32	24090, 24092	Archetype Handle, Outside, with Gasket (SS, BLK)	1
33	26136	Edge Pull (Thermal Assembly)	1
34	24128	Archetype Pin, Clevis Grooved	2
35	24129	E-Style Retaining Ring	2
36	24082	Archetype Secondary Latch	1
37	26686	Archetype Secondary Latch Faceplate, (Thermal)	1
38	26373	Secondary Latch Linkage	1
39	24127	Spring Compensation - Archetype Secondary Latch	1

Description
X Panel Assembly B.O.M.

File Name
Series 3070-T, XO With
Screen Assembly

REV

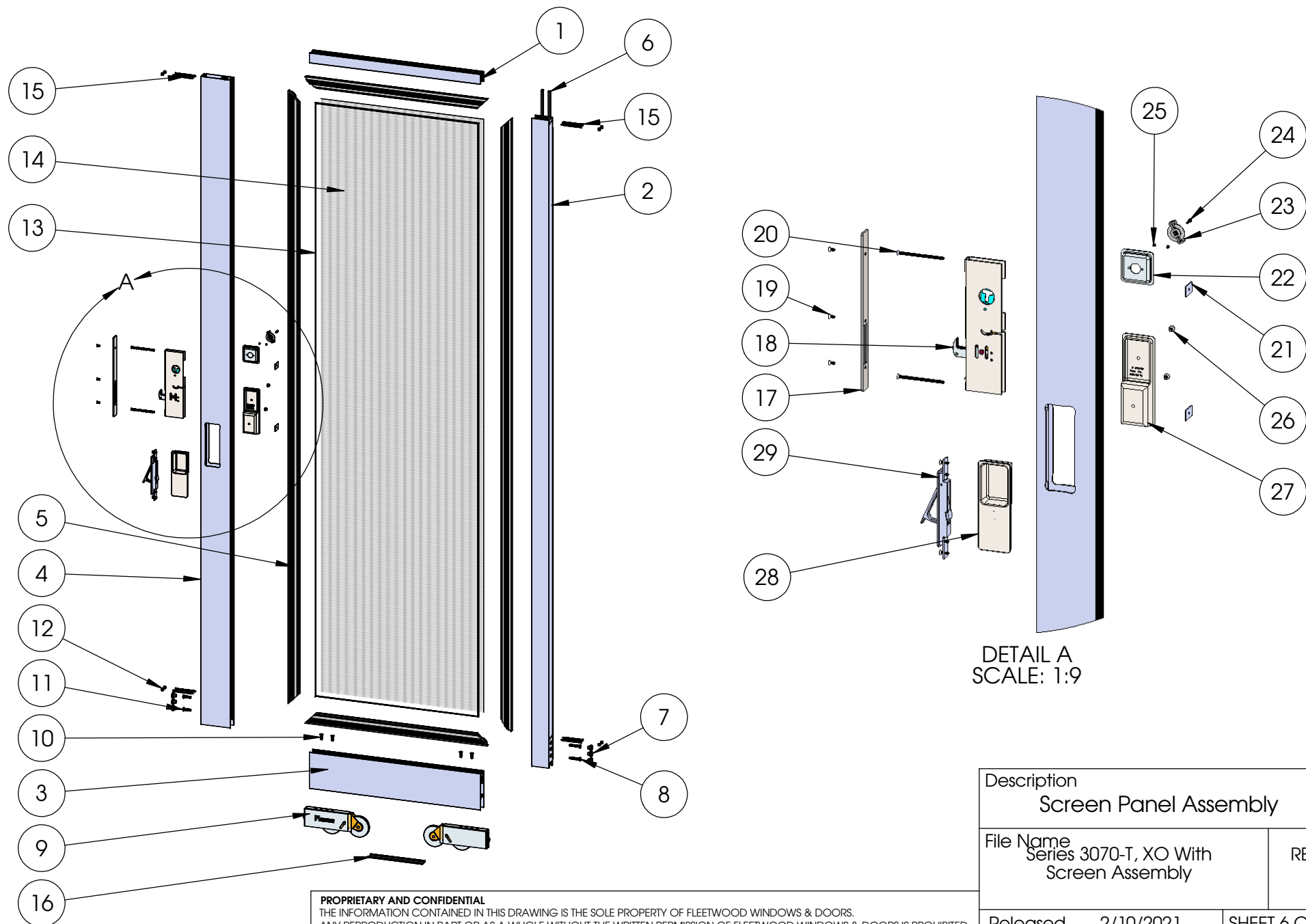
PROPRIETARY AND CONFIDENTIAL

THE INFORMATION CONTAINED IN THIS DRAWING IS THE SOLE PROPERTY OF FLEETWOOD WINDOWS & DOORS.
ANY REPRODUCTION IN PART OR AS A WHOLE WITHOUT THE WRITTEN PERMISSION OF FLEETWOOD WINDOWS & DOORS IS PROHIBITED.

Released 2/10/2021

SHEET 5 OF 9

ASSEMBLY / PARTS LIST (B.O.M.)



ASSEMBLY / PARTS LIST (B.O.M.)

EXTRUSIONS

ITEM NO.	PART NUMBER	DESCRIPTION	QTY.
1	3075	Thermal Top Rail DG	1
2	3728	Thermal Interlocker Fixed Assembly	1
3	3310	Thermal Bottom Rail	1
4	3776	Thermal Lock Stile (Archetype) Assembly	1
5	3766	Screen Adapter	4

HARDWARE

ITEM NO.	PART NUMBER	DESCRIPTION	QTY.
6	19117	Large Fin Seal Mohair	2
7	20635	Small Round Panel Plug (All Doors)	6
8	25724	1/4-20 PHP - B, 1.5 in, SS, Clear	2
9	18883	A3 Roller, Precision - Tandem	2
10	20305	1/4-20 FHP - B, 3/4 in, SS Clear	4
11	20359	1/4-20 PHP - B, 1 in, SS, Clear	2
12	25907	Round Plug - Plastic - 5/16"	8
13	19129	Screen Rubber Spline 0.180 in	1
14	-	Screen Mesh	1
15	20262	# 8 FHP Screw, 3 in, SS, Clear	8
16	22938	PVC Rail Spreader, BL798	1
17	26685	Archetype Latch Faceplate	1
18	24077	Archetype XO Primary Latch, RH Latch	1

HARDWARE

ITEM NO.	PART NUMBER	DESCRIPTION	QTY.
19	24076, 25325	# 8-32 FHS, 3/8" Hex Socket Flat (SS, Black)	3
20	25560	# 10-32 FHP-B Screw, 3.375 in.	2
21	18671	Back Up Plate # 10-32 x 0.075 Thk.	2
22	24767, 24081	Archetype Actuator Pocket, XO (SS, BLK)	1
23	24079, 24766	Archetype Actuator (Black, SS)	1
24	24072, 24094	# 6-32, Hex Socket Head Cap, Self Locking, 1/2", SS (Clear, Black)	1
25	24074	# 4-40 FHP-UC, .188 in, SS, Clear	2
26	24087, 24093	# 10-32 FH Socket Screw, 0.375 in (SS, Black)	2
27	24089, 24091	Archetype Handle, Inside, with Gasket (SS, BLK)	1
28	24090, 24092	Archetype Handle, Outside, with Gasket (SS, BLK)	1
29	26136	Edge Pull (Thermal Assembly)	1

Description
Screen Panel Assembly B.O.M.

File Name
Series 3070-T, XO With
Screen Assembly

REV

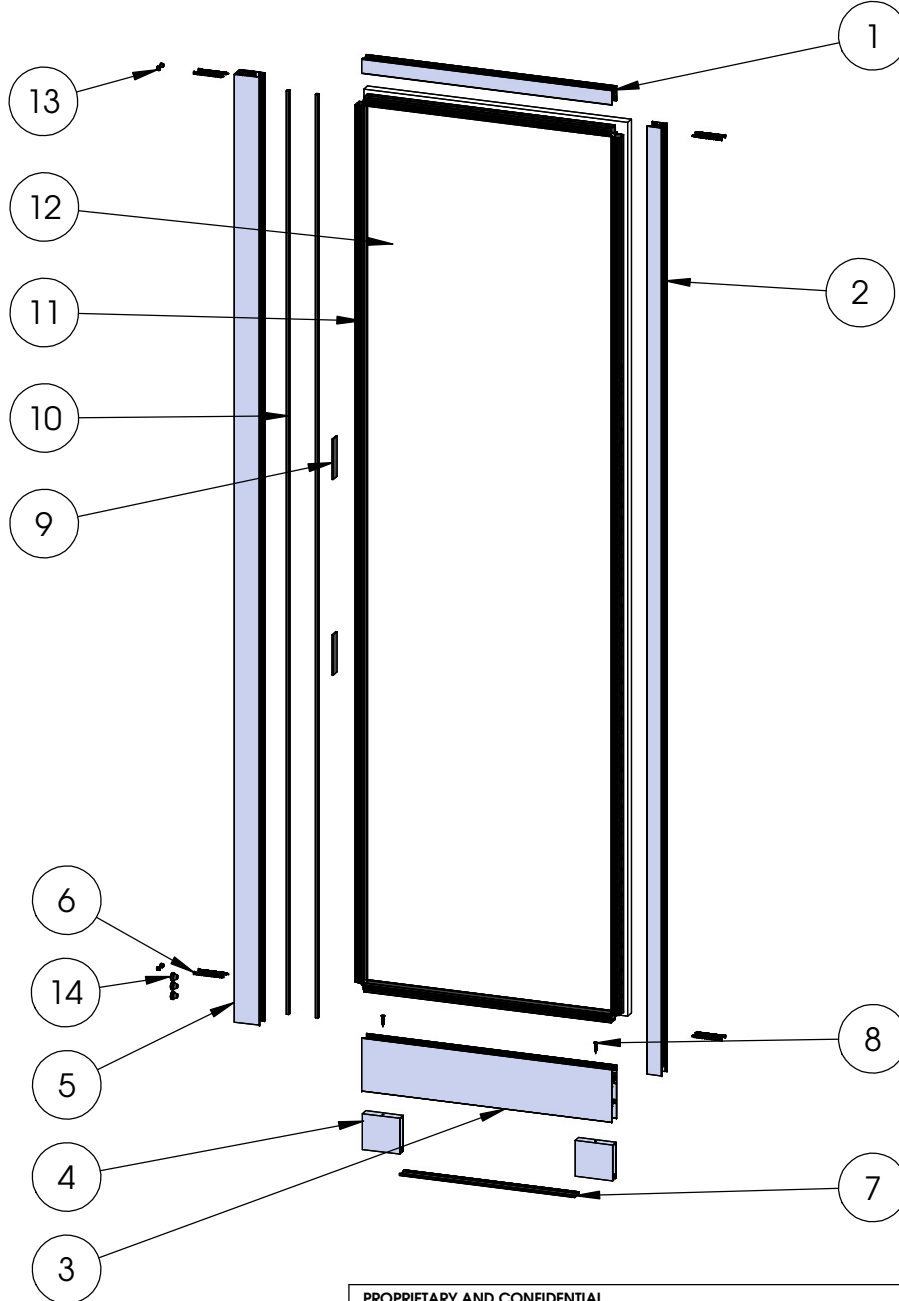
PROPRIETARY AND CONFIDENTIAL

THE INFORMATION CONTAINED IN THIS DRAWING IS THE SOLE PROPERTY OF FLEETWOOD WINDOWS & DOORS.
ANY REPRODUCTION IN PART OR AS A WHOLE WITHOUT THE WRITTEN PERMISSION OF FLEETWOOD WINDOWS & DOORS IS PROHIBITED.

Released 2/10/2021

SHEET 7 OF 9

ASSEMBLY / PARTS LIST (B.O.M.)



EXTRUSIONS

ITEM NO.	PART NUMBER	DESCRIPTION	QTY.
1	3075	Thermal Top Rail DG	1
2	3073	Fixed Stile DG	1
3	3310	Thermal Bottom Rail	1
4	3762	Setting Block - Mammoth Rail, Fixed Panel	2
5	3728	Thermal Interlocker Fixed Assembly	1

HARDWARE

ITEM NO.	PART NUMBER	DESCRIPTION	QTY.
6	20262	# 8 FHP Screw, 3 in, SS, Clear	8
7	22938	PVC Rail Spreader, BL798	1
8	20293	# 10 FHP-A, 1", SS, Clear	2
9	18621	Setting Block (1/8 in x 4 in)	2
10	19117	Large Fin Seal Mohair	2
11	22909	1 inch Glazing Vinyl (Shown)	1
12	-	Glass	1
13	25907	Round Plug - Plastic - 5/16"	4
14	20635	Small Round Panel Plug (All Doors)	3

Description

O Panel Assembly

File Name

Series 3070-T, XO With
Screen Assembly

REV

PROPRIETARY AND CONFIDENTIAL

THE INFORMATION CONTAINED IN THIS DRAWING IS THE SOLE PROPERTY OF FLEETWOOD WINDOWS & DOORS.
ANY REPRODUCTION IN PART OR AS A WHOLE WITHOUT THE WRITTEN PERMISSION OF FLEETWOOD WINDOWS & DOORS IS PROHIBITED.

Released 2/10/2021

SHEET 8 OF 9

ASSEMBLY / PARTS LIST (B.O.M.)

TABLE A: Key Cylinder Options

Keyed	Color	ID
Alike	Stainless	25356
	Black	24784
Different	Stainless	24782
	Black	24783

Description

Tables

File Name

Series 3070-T, XO With
Screen Assembly

REV

PROPRIETARY AND CONFIDENTIAL

THE INFORMATION CONTAINED IN THIS DRAWING IS THE SOLE PROPERTY OF FLEETWOOD WINDOWS & DOORS.
ANY REPRODUCTION IN PART OR AS A WHOLE WITHOUT THE WRITTEN PERMISSION OF FLEETWOOD WINDOWS & DOORS IS PROHIBITED.

Released 2/10/2021

SHEET 9 OF 9