

(USE RULER TO SCALE DIMENSIONS IN INCHES)

SCALE: 1/4"

OX DOOR

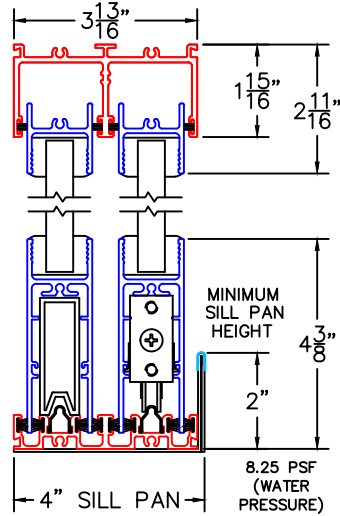
MULTI-SLIDE DOOR DETAILS

OX DOOR

①
MULTI-SLIDE
HEAD DETAIL

EXTERIOR

②
MULTI-SLIDE
SILL DETAIL



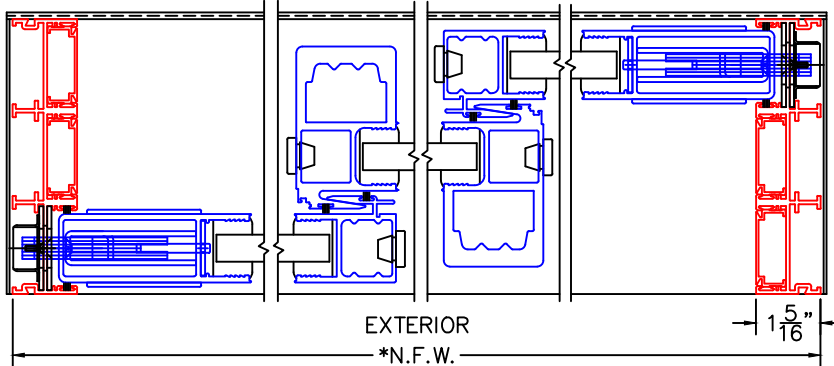
XXX DOOR

⑥
LOCK JAMB

⑦
INTERLOCKERS

⑧
INTERLOCKERS

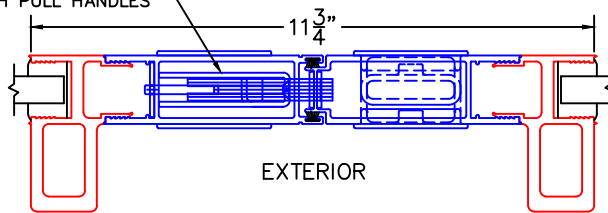
⑨
LOCK JAMB



ARCHETYPE LATCH WITH
FLUSH PULL HANDLES

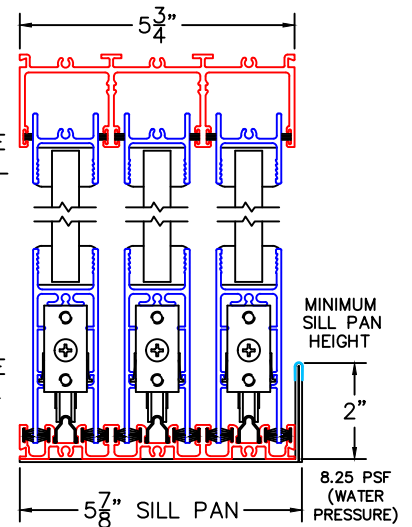
⑫
MEETING STILES

EXTERIOR

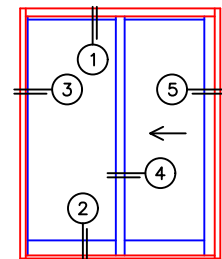


⑩
MULTI-SLIDE
HEAD DETAIL
EXTERIOR

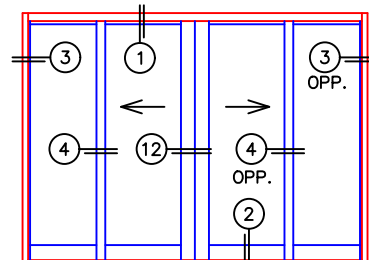
⑪
MULTI-SLIDE
SILL DETAIL



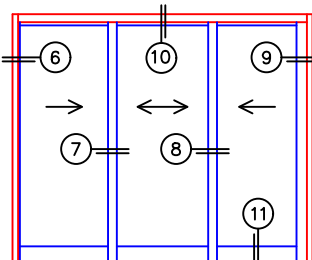
OX DOOR



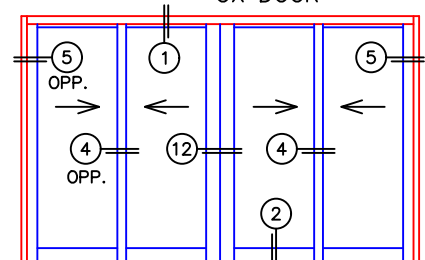
OXIXO DOOR



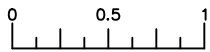
XXX DOOR



XXIXX DOOR



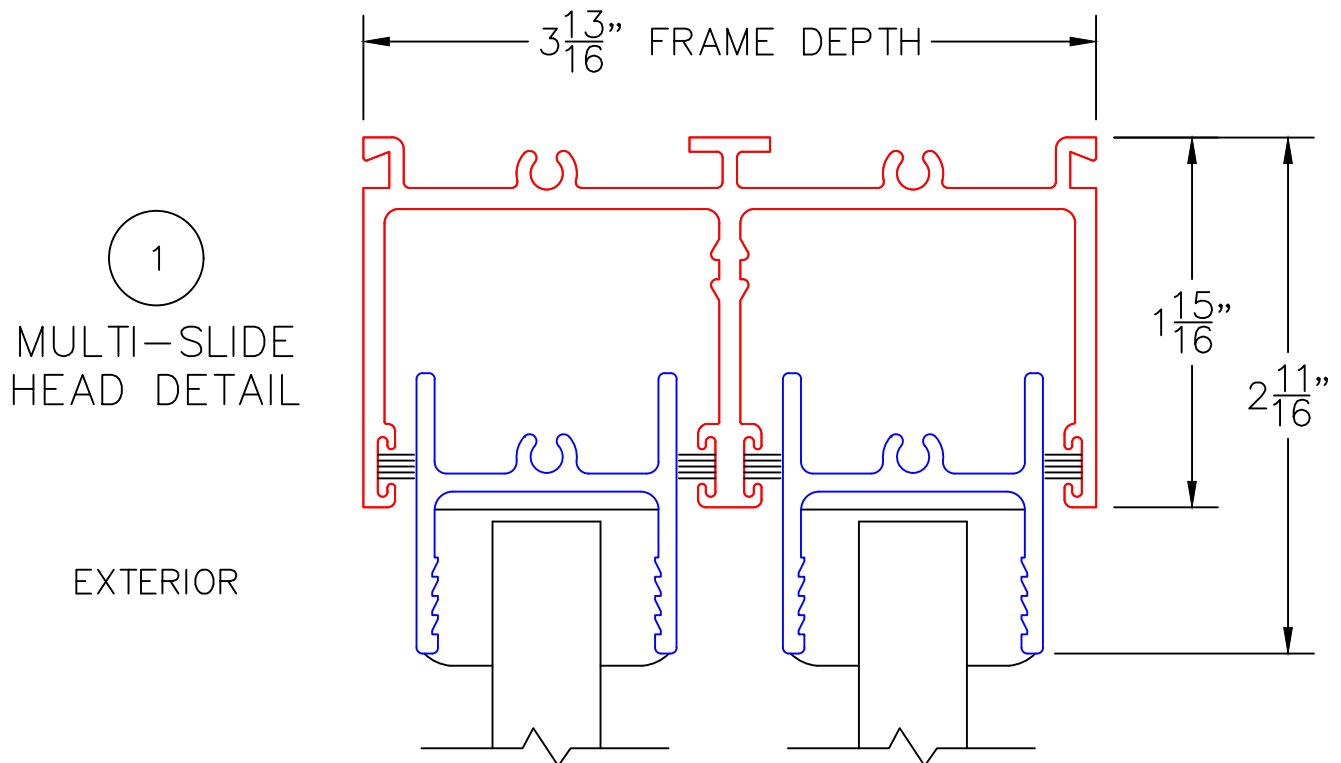
NOTE: CENTERLINES ARE NOT DIVIDED EQUALLY; CONFIRM CENTERLINES WHEN REQUIRED.
-NET FRAME WIDTH DOES NOT INCLUDE SILL PAN. -HP EXTRUSION LOCATIONS MAY VARY.
-SILL PAN EXTENDS 1/8" BEYOND EACH JAMB. -GLASS PENETRATION: 11/16"
-ENCLOSED PX AND XP DOORS MAY REQUIRE POCKET DEMO FOR PANEL REMOVAL. -EXTERIOR RATED PRODUCTS HAVE WEEP SLOTS ON HORIZONTAL SILLS.

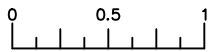


(USE RULER TO SCALE DIMENSIONS IN INCHES)

SCALE: FULL

OX DOOR

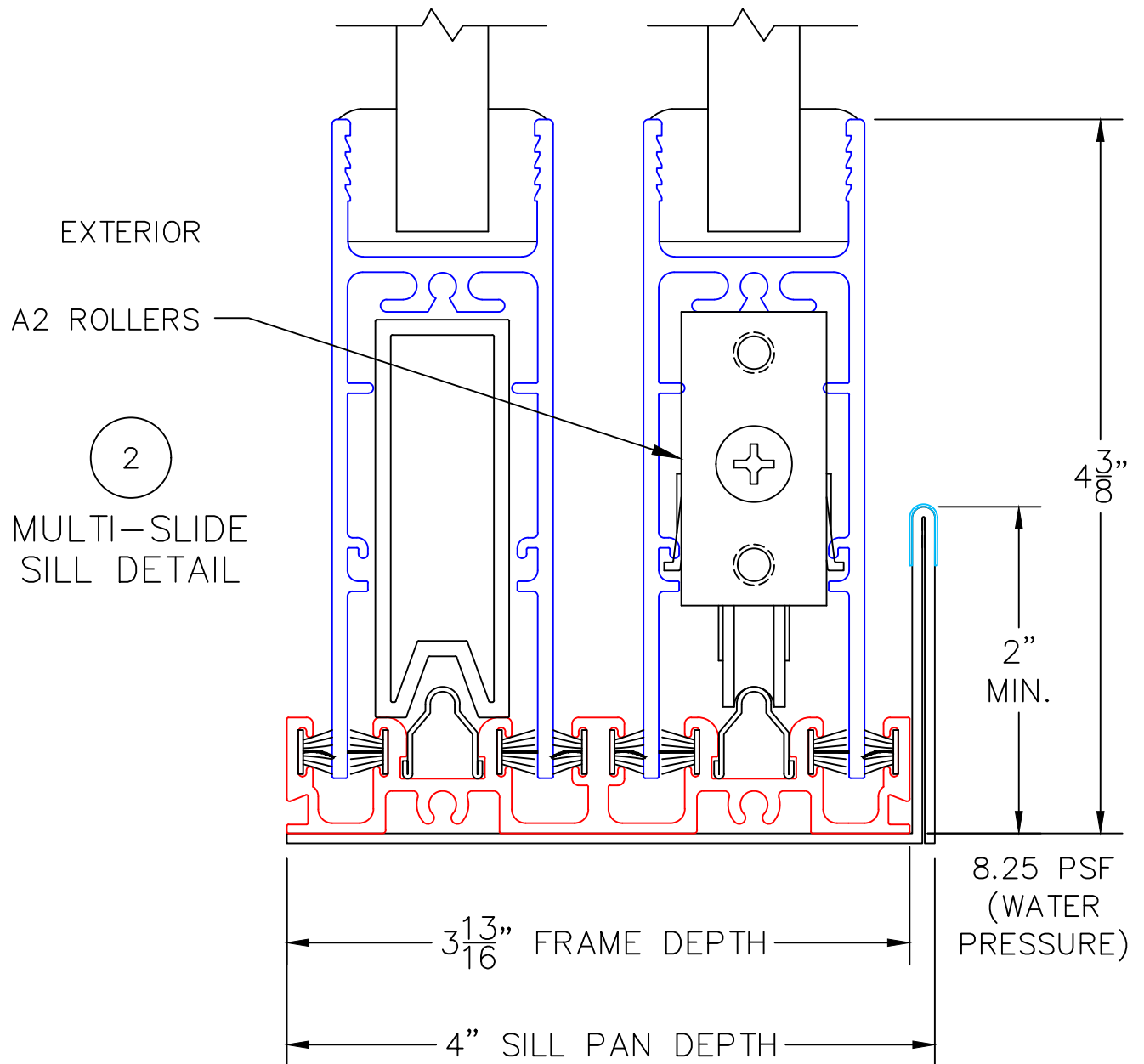


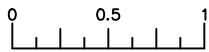


(USE RULER TO SCALE DIMENSIONS IN INCHES)

SCALE: FULL

OX DOOR





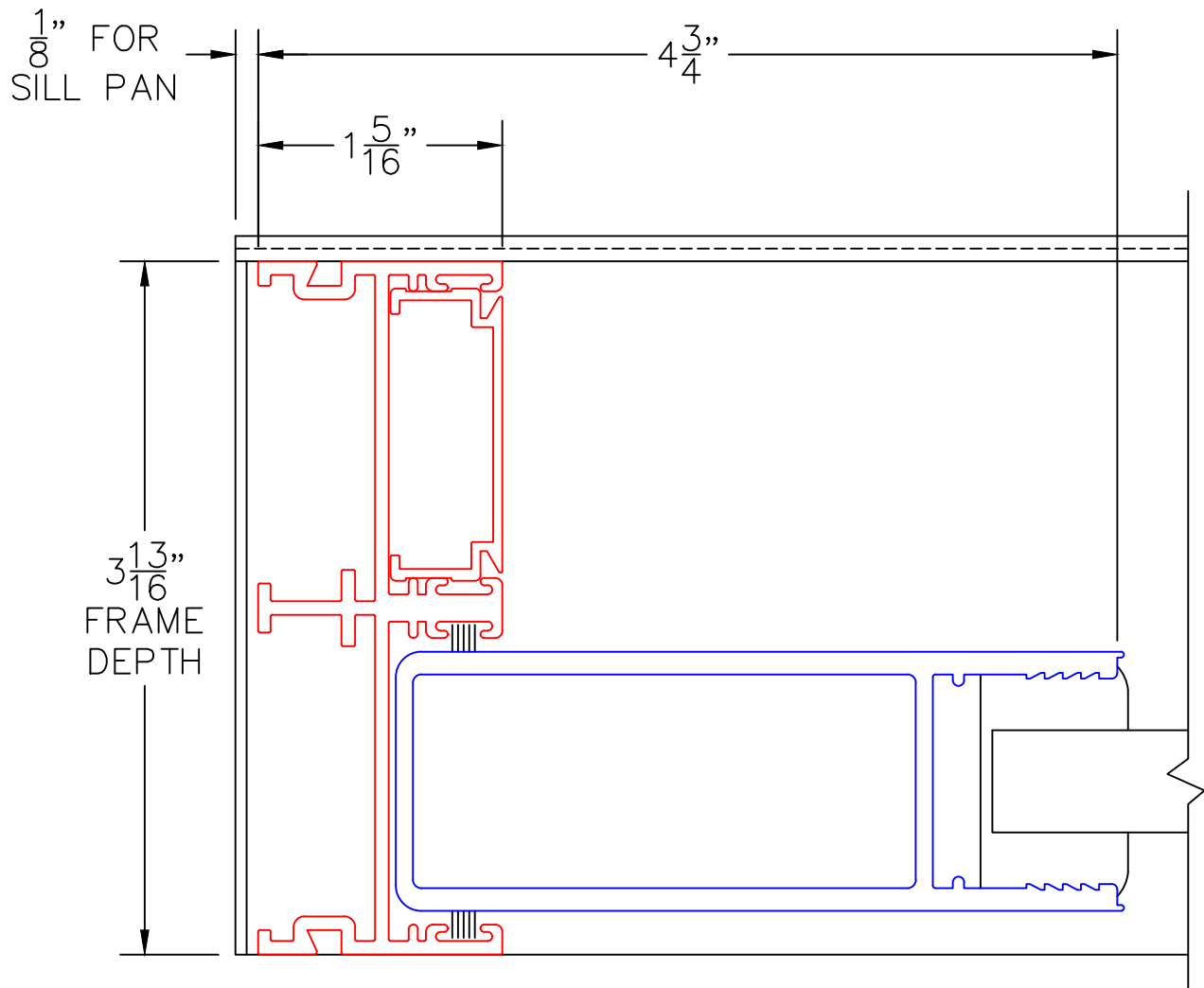
(USE RULER TO SCALE DIMENSIONS IN INCHES)

SCALE: FULL

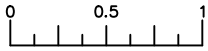
OX DOOR

3

FIXED JAMB



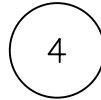
EXTERIOR



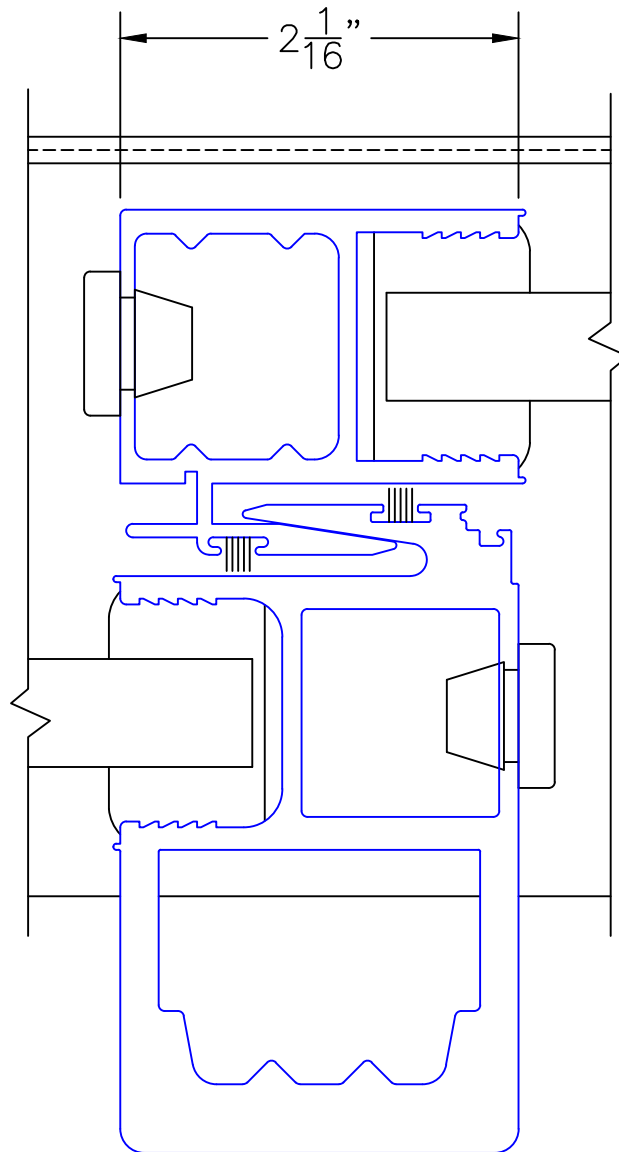
(USE RULER TO SCALE DIMENSIONS IN INCHES)

SCALE: FULL

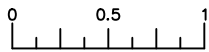
OX DOOR



INTERLOCKERS



EXTERIOR



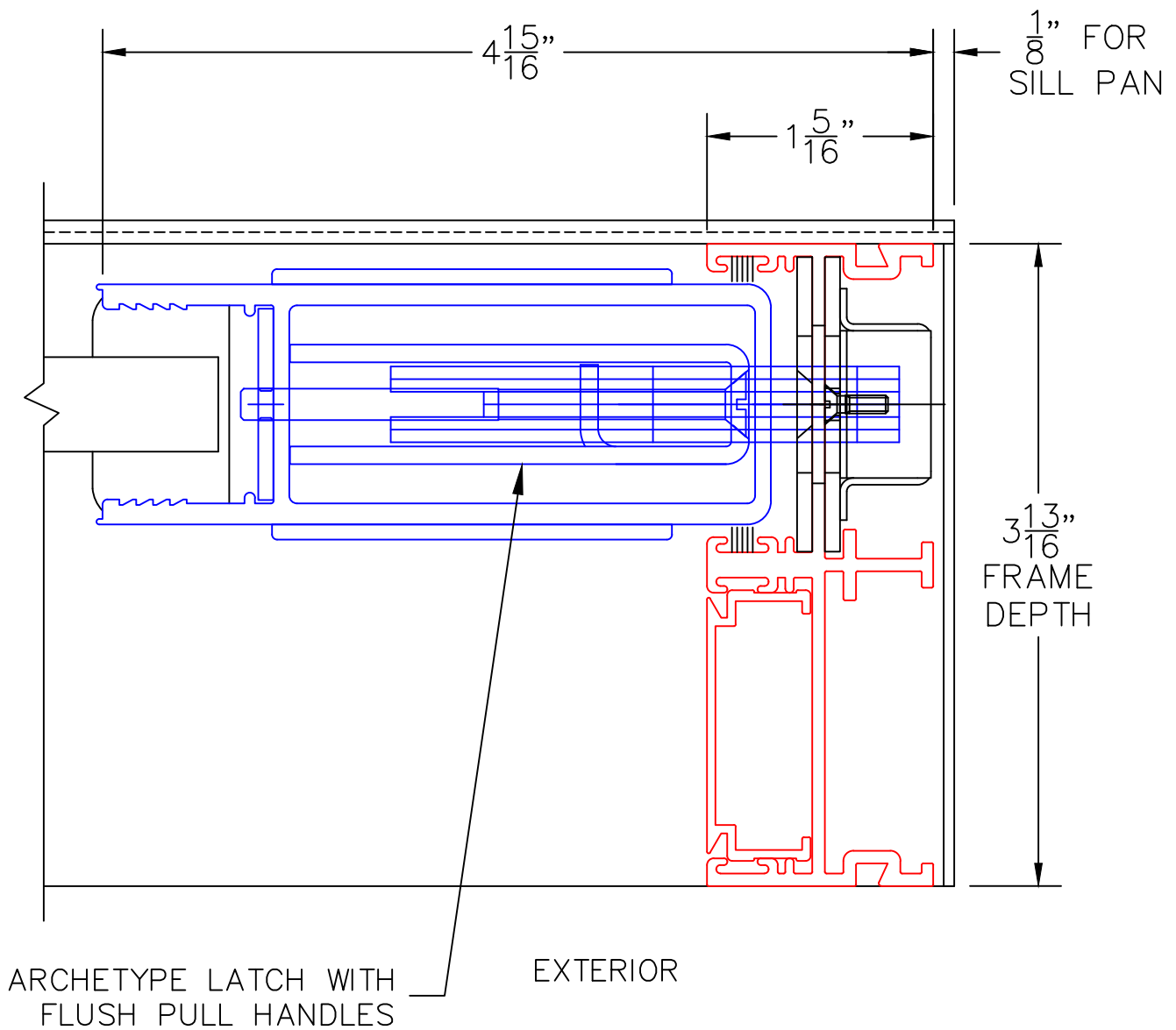
(USE RULER TO SCALE DIMENSIONS IN INCHES)

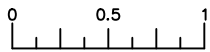
SCALE: FULL

OX DOOR

5

LOCK JAMB





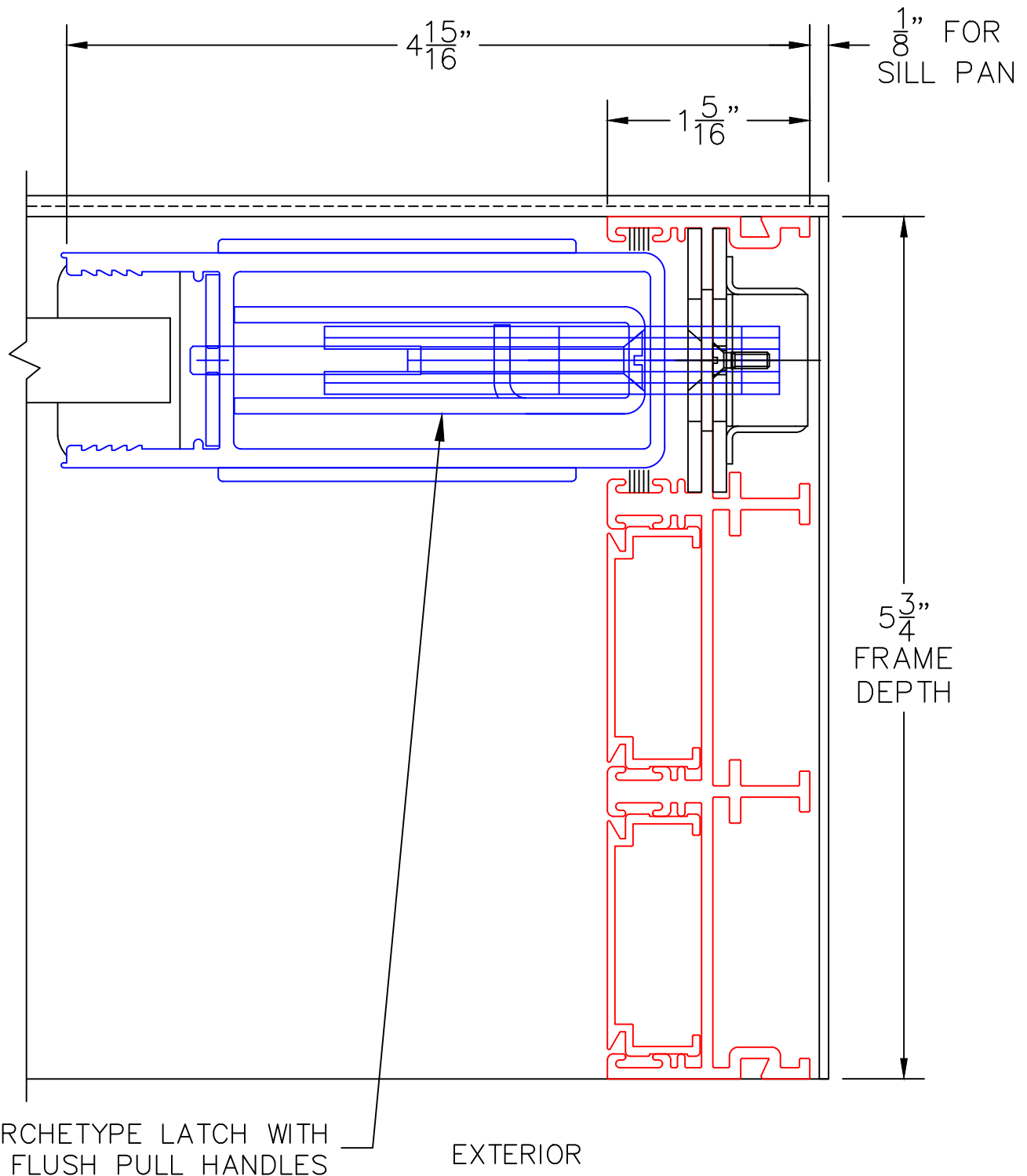
(USE RULER TO SCALE DIMENSIONS IN INCHES)

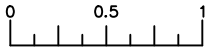
SCALE: FULL

XXX DOOR

9

LOCK JAMB





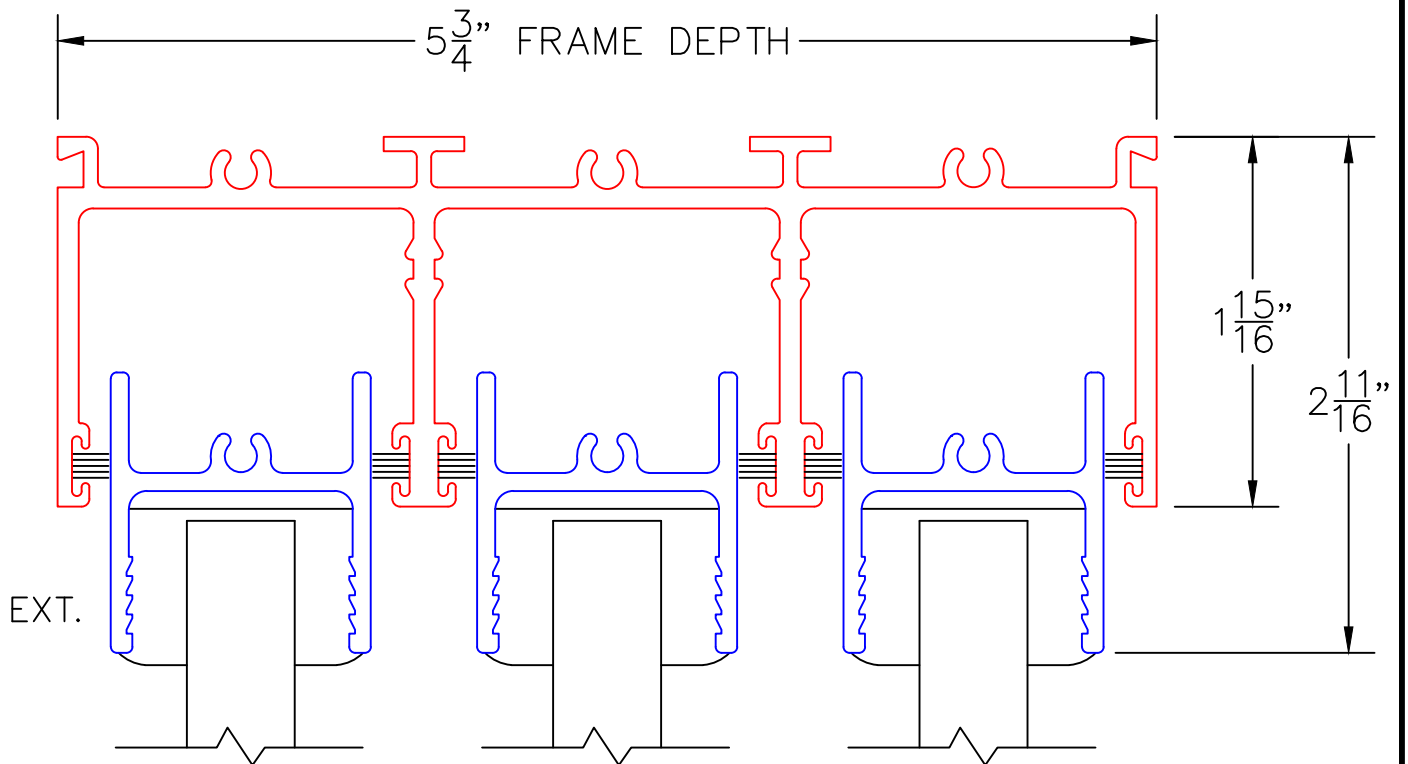
(USE RULER TO SCALE DIMENSIONS IN INCHES)

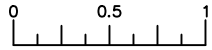
SCALE: FULL

XXX DOOR

10

MULTI-SLIDE
HEAD DETAIL





(USE RULER TO SCALE DIMENSIONS IN INCHES)

SCALE: FULL

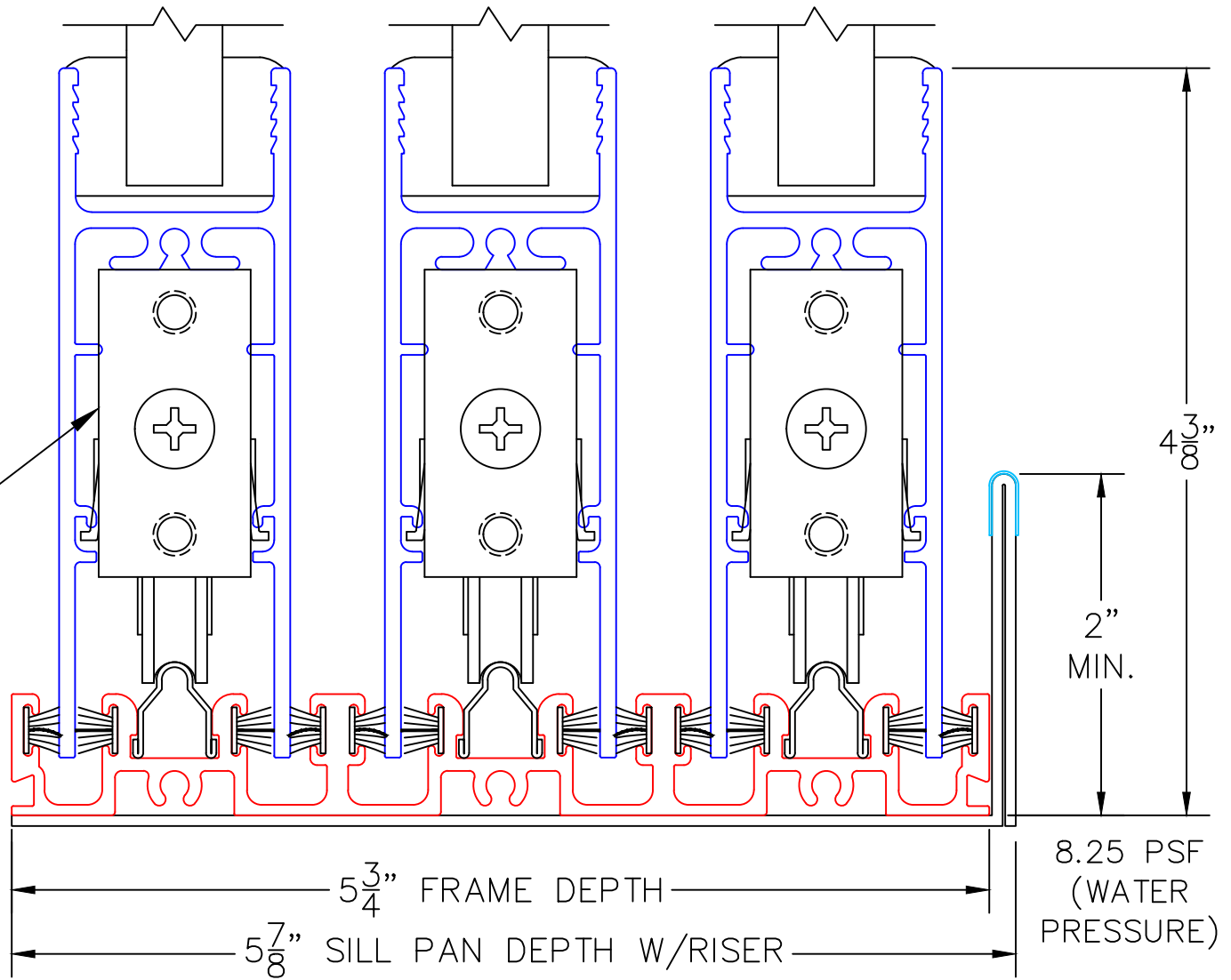
XXX DOOR

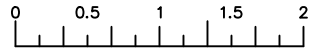
EXTERIOR

11

MULTI-SLIDE
SILL DETAIL

A2 ROLLERS





(USE RULER TO SCALE DIMENSIONS IN INCHES)

SCALE: 3/4

OXIXO DOOR

12

MEETING STILES

