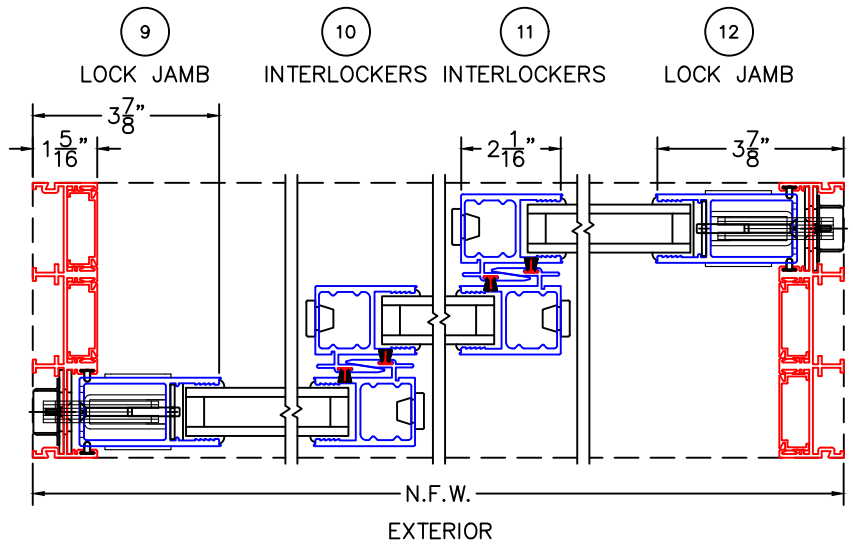
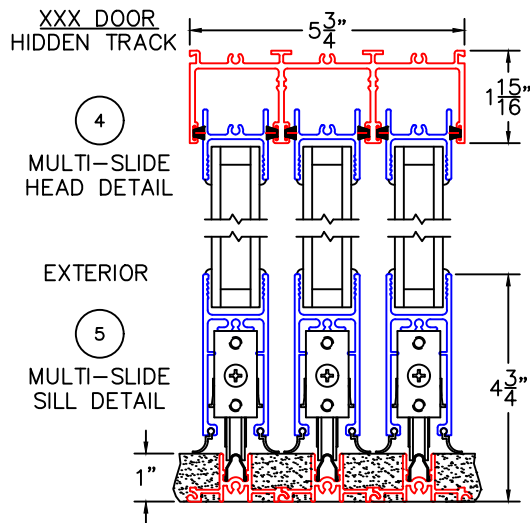
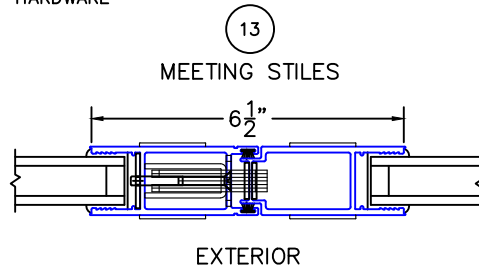
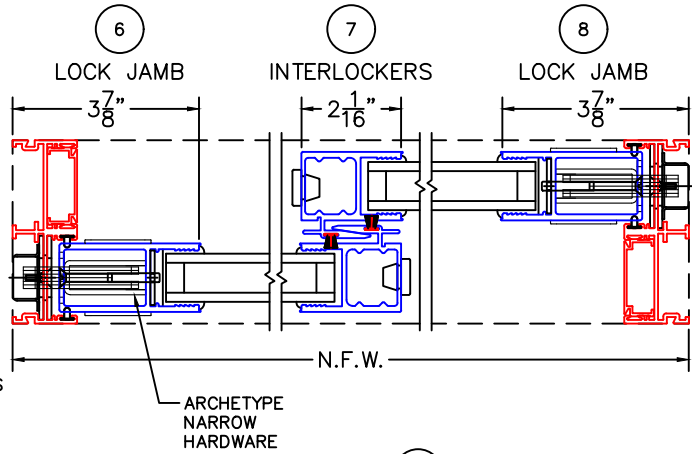
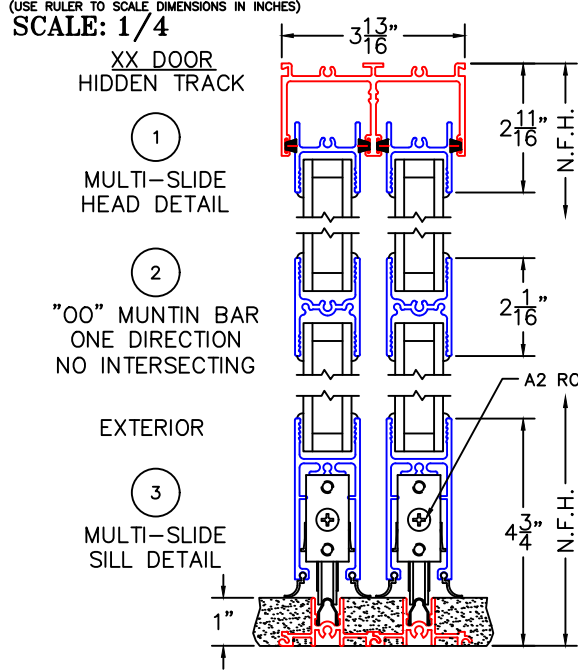
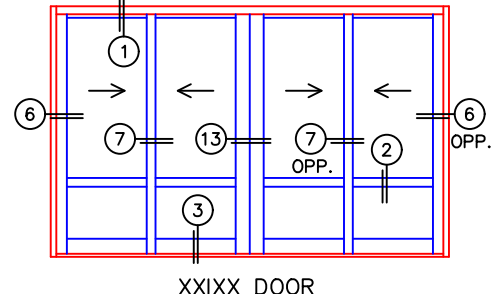
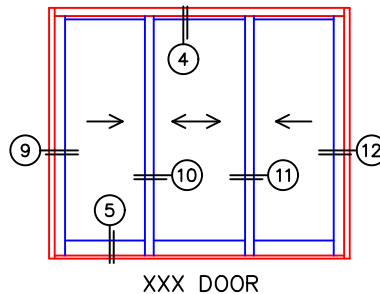
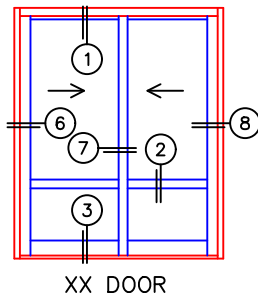


(USE RULER TO SCALE DIMENSIONS IN INCHES)
SCALE: 1/4"

MULTI-SLIDE DOOR DETAILS



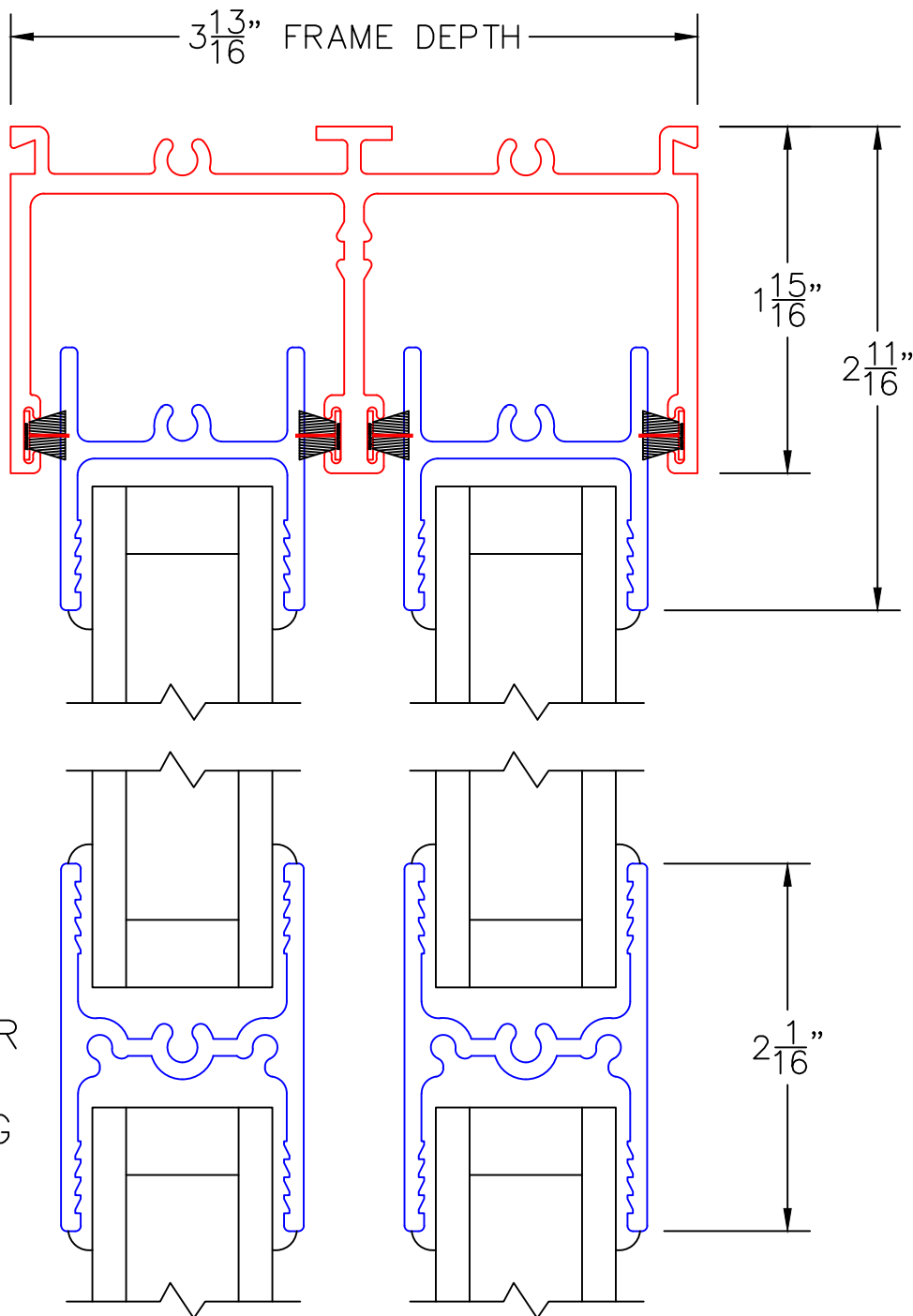
NOTE: CENTERLINES ARE NOT DIVIDED EQUALLY; CONFIRM CENTERLINES WHEN REQUIRED.



-GLASS PENETRATION: 11/16"
-FOR ADDITIONAL OPTIONS AND UPGRADES
SEE DRAWINGS 3050-08, 3050-09 & 3050-10.

0 0.5 1
(USE RULER TO SCALE DIMENSIONS IN INCHES)
SCALE: FULL

XX DOOR
HIDDEN TRACK



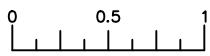
1

MULTI-SLIDE
HEAD DETAIL

EXTERIOR

2

"00" MUNTIN BAR
ONE DIRECTION
NO INTERSECTING



(USE RULER TO SCALE DIMENSIONS IN INCHES)

SCALE: FULL

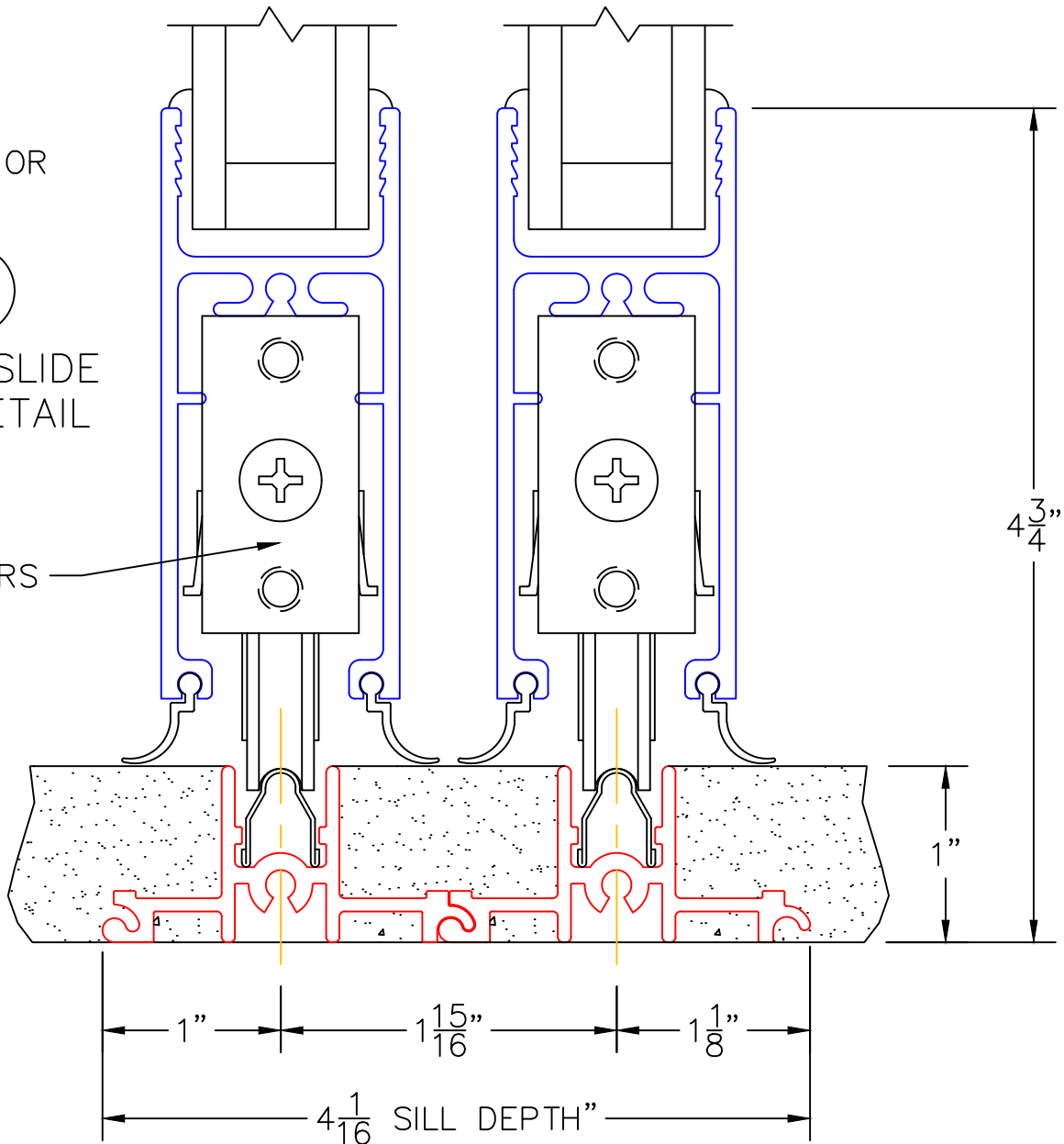
XX DOOR
HIDDEN TRACK

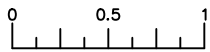
EXTERIOR

3

MULTI-SLIDE
SILL DETAIL

A2 ROLLERS





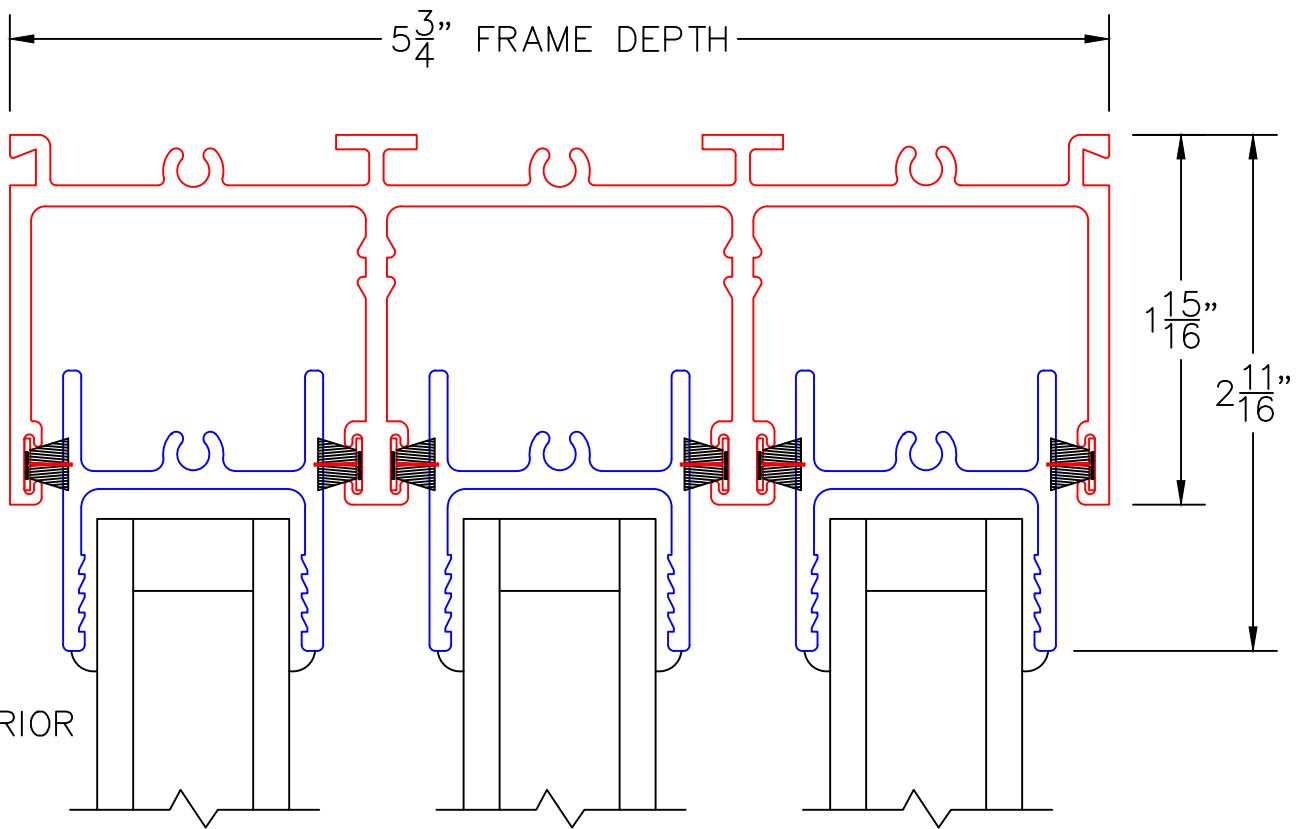
(USE RULER TO SCALE DIMENSIONS IN INCHES)

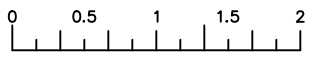
SCALE: FULL

XXX DOOR

4

MULTI-SLIDE
HEAD DETAIL





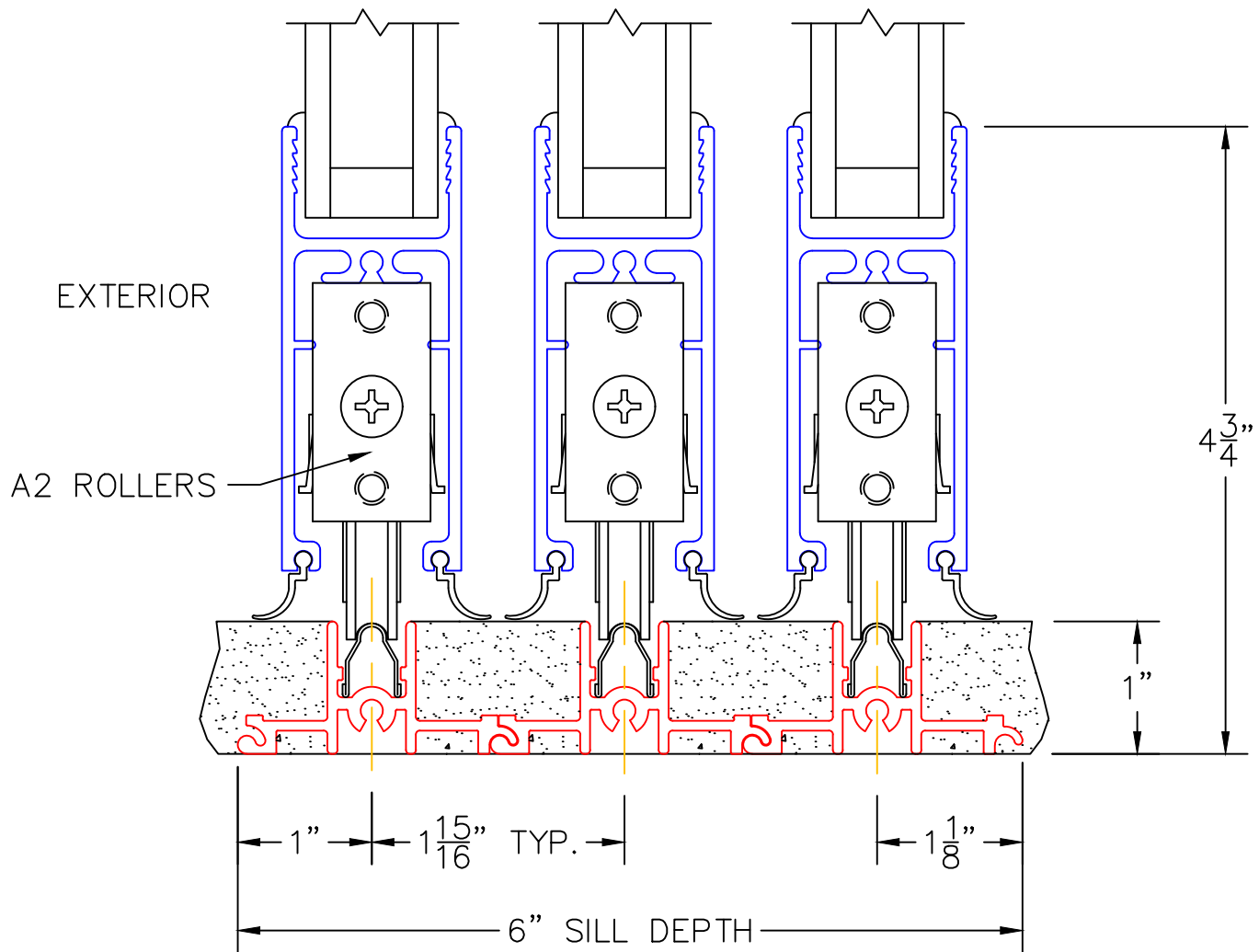
(USE RULER TO SCALE DIMENSIONS IN INCHES)

SCALE: 3/4

XXX DOOR
HIDDEN TRACK

5

MULTI-SLIDE
SILL DETAIL

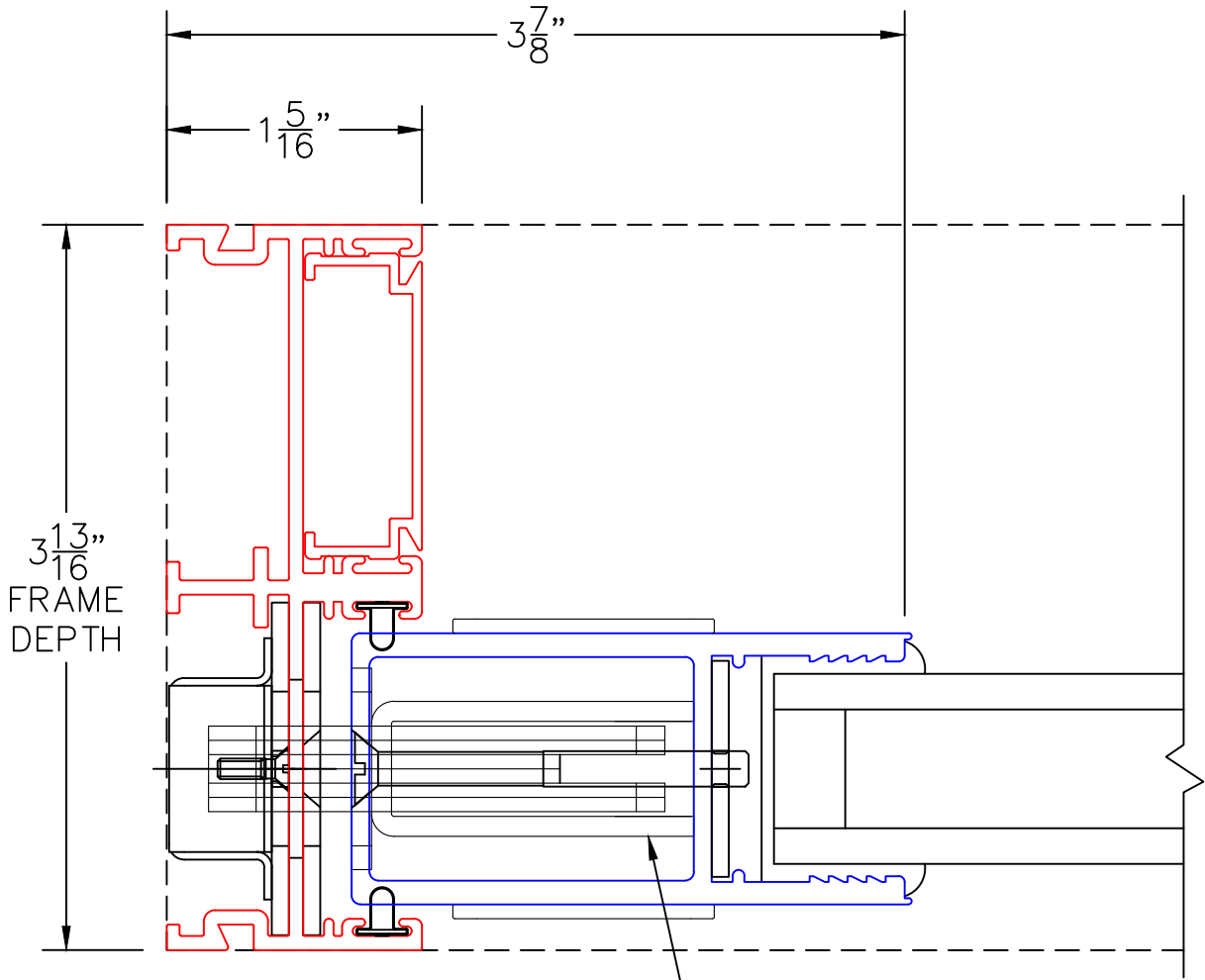


0 0.5 1
(USE RULER TO SCALE DIMENSIONS IN INCHES)
SCALE: FULL

XX DOOR
HIDDEN TRACK

6

LOCK JAMB



ARCHETYPE NARROW
HARDWARE

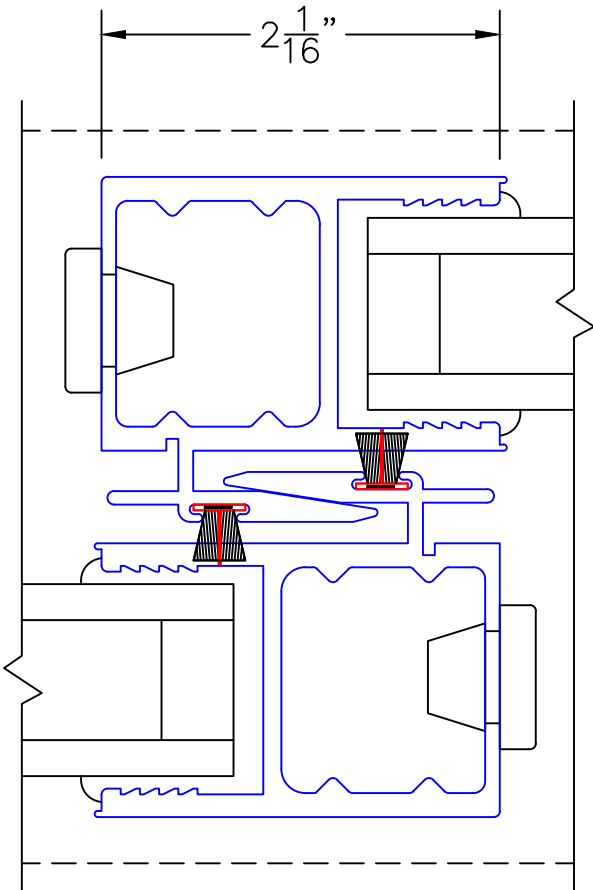
EXTERIOR

0 0.5 1
(USE RULER TO SCALE DIMENSIONS IN INCHES)
SCALE: FULL

XX DOOR
HIDDEN TRACK

7

INTERLOCKERS



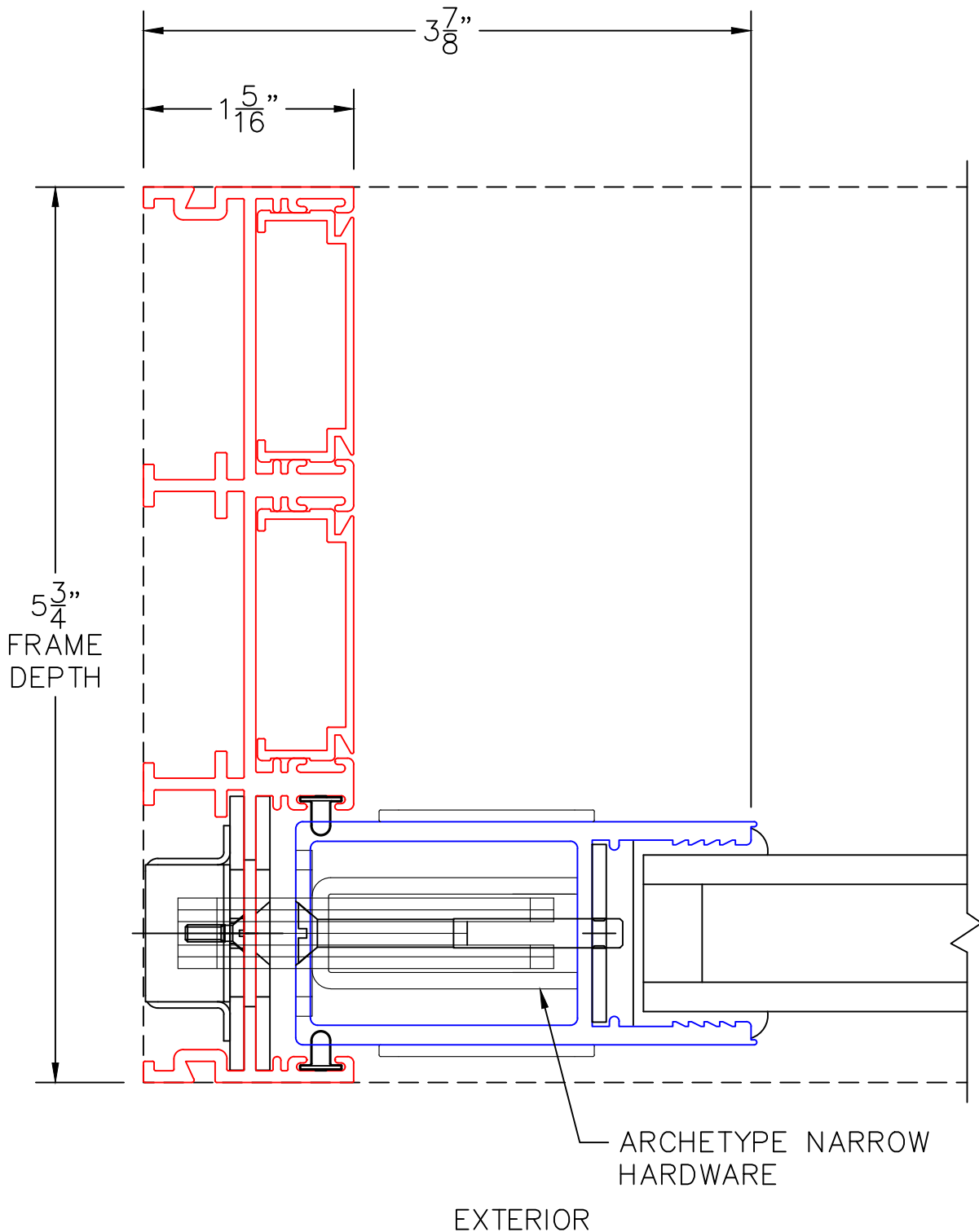
EXTERIOR

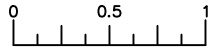
0 0.5 1
(USE RULER TO SCALE DIMENSIONS IN INCHES)
SCALE: FULL

XXX DOOR
HIDDEN TRACK

9

LOCK JAMB





(USE RULER TO SCALE DIMENSIONS IN INCHES)

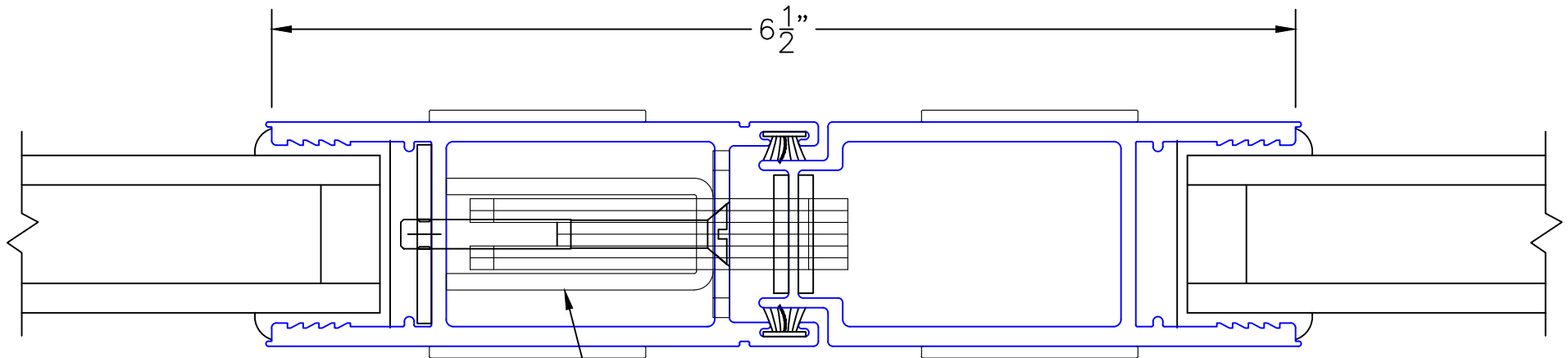
SCALE: FULL

XXIXX DOOR HIDDEN TRACK

13

MEETING STILES

6 1/2"



ARCHETYPE NARROW
HARDWARE

EXTERIOR