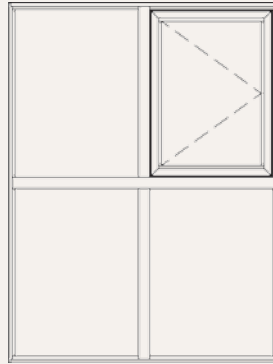




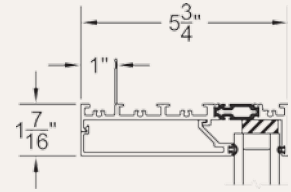


# SERIES 4800-T

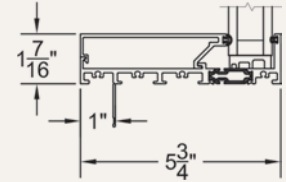
## “THERMAL FRAME” WINDOW WALL



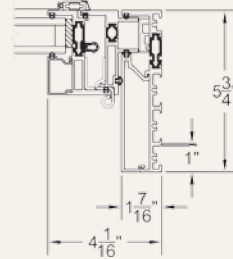
ELEVATION VIEW:  
WINDOW WALL WITH  
CASEMENT



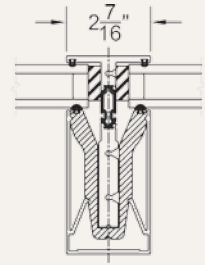
NAIL-ON HEAD



NAIL-ON SILL



NAIL-ON JAMB WITH 450-T



GLASS ANCHOR & COVER

**TYPICAL CONFIGURATIONS**

- Virtually Unlimited
- Optional Inserts (Casement, Awning, Hopper)
- Max Panel Height & Width Determined by Site Wind Loads

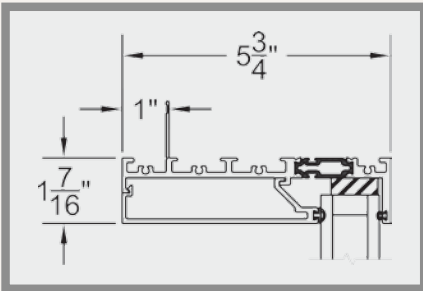
**EXAMPLE SHGC**

'NFRC: 0.227  
Pending Certification

**EXAMPLE U-FACTOR**

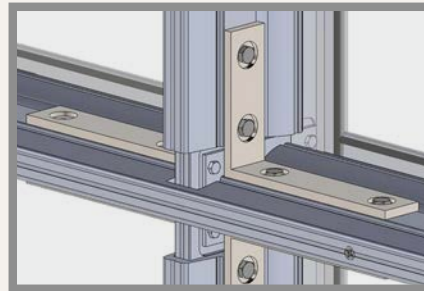
'NFRC: 0.25  
Pending Certification

\*Specimen size: Nom. 47.25" x 59".



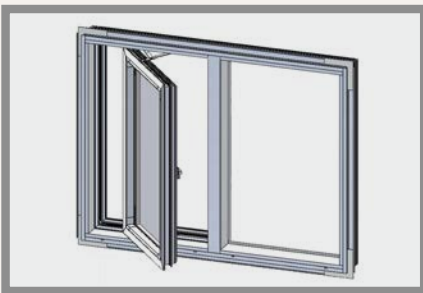
### Nail-On Perimeter Frame:

The head, sill and jamba ONLY reveal a 1 7/16" sightline and clever building design can hide even more. The integral nail fin offers peace of mind during waterproofing.



### Dead Load & Shear Stress:

Support clips are provided with every TD to support the glass weight as well as provide additional bolstering for wind loads. Each clip is constructed from stainless steel and connects with three fasteners.



### Operable Inserts:

Series 450-T casement and awning windows can be inserted into any opening created within a Series 4800-T system.



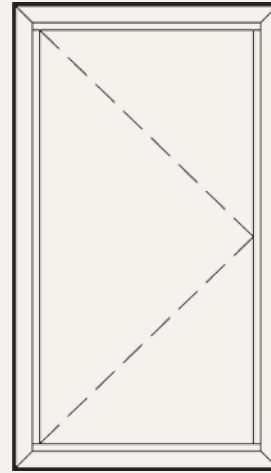
### Gorgeous Finish:

Each TD is equipped with a Glass Anchor Cover that can be installed at the project's completion so the aluminum finish is less likely to be damaged during construction.

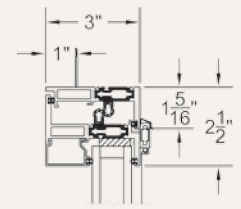


**SERIES 450-T**

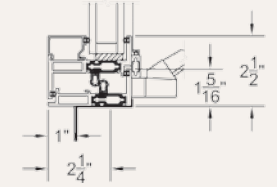
**“THERMAL FRAME” CASEMENT, AWNING & HOPPER**



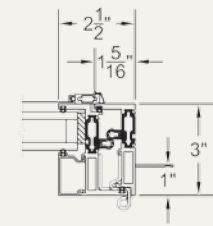
ELEVATION VIEW: C



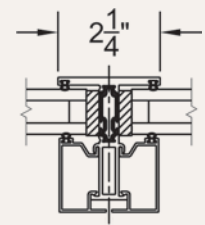
NAIL-ON HEAD CASEMENT



NAIL-ON SILL CASEMENT



NAIL-ON JAMB AT HINGE



TDL

**TYPICAL CONFIGURATIONS**

- C, CC, COC, A, AA, AOA, H, HH
- Maximum Panel Square Footage: Casement, Awning & Hopper: 24 ft<sup>2</sup>
- Partner Products: Series 4800-T

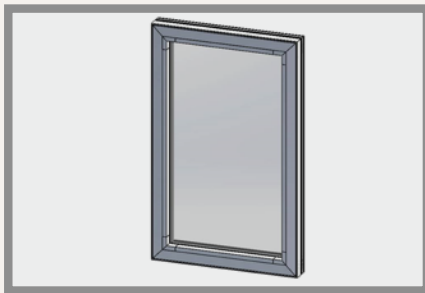
**EXAMPLE SHGC**

'NFRC: 0.19  
Pending Certification

**EXAMPLE U-FACTOR**

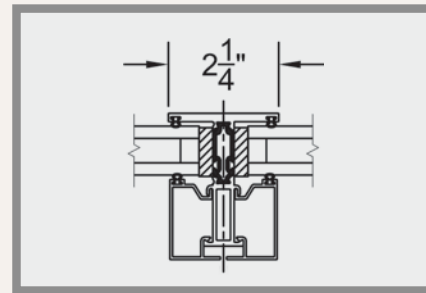
'NFRC: 0.30  
Pending Certification

'Specimen size: Nom. 24" x 59".



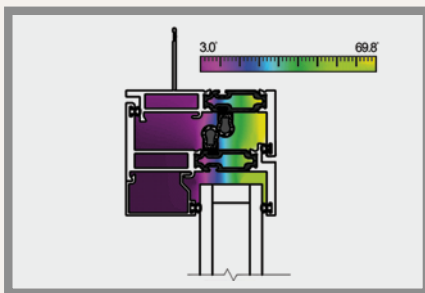
**Flush Finish:**

Each operable window was created to resemble a cube when closed. To achieve this purpose, the Engineering Department broke new ground and designed a vent that finished in true vertical alignment with the perimeter frame.



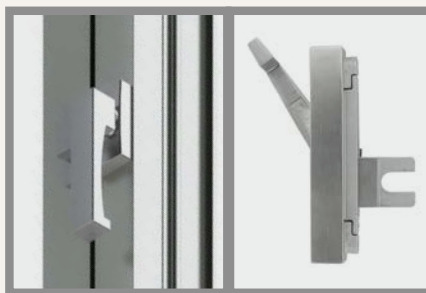
**Shadow Line & Fixed Windows:**

An added benefit to the 'cube' is a natural shadow line that traces the interior and exterior frame/vent junction. A petite sight-line fixed window was designed to accompany the operable windows, which maintain the Shadow Line through the visual sweep of the elevation.



**Convection Blockers:**

There are two paths energy takes through a window. Despite numerous advancements, air is still the best window frame insulator - unless you have too much. Too much air spaces reduces its natural thermal benefit. The Series 450-T was created with 'convection blockers' to maximize the natural insulation of air.



**Proprietary Cam Handle & Multipoint Latch:**

The Archetype multi-point latch was engineered for the Series 450 T as the perfect complement to the Archetype cam handle. They were both designed to be the ideal balance of minimal design and ergonomics. Made from high-grade stainless steel and crafted with care, together they are a work of art.

# FLEETWOOD WINDOWS & DOORS FACTORY & SHOWROOM



**WE INVITE YOU TO VISIT OUR 207,000 SQUARE FOOT FACTORY WHICH IS LOCATED IN SOUTHERN CALIFORNIA. OUR SHOWROOM IS EQUIPPED WITH A BROAD SAMPLING OF EVERY PRODUCT WE MANUFACTURE. CONTACT ONE OF OUR AUTHORIZED DEALERS TO SET UP AN APPOINTMENT.**

## Finding A Dealer:

If your project is located in one of our major markets (Hawaii, California, Nevada, Arizona, New Mexico, Colorado, Utah, Oregon, Washington, Idaho, Texas, Tennessee, Alabama, Georgia, South Carolina, North Carolina, Florida, New York, Illinois, British Columbia and Mexico), we offer a convenient way to find a dealer. On our website, follow the DEALERS menu to the Dealer Search page to find a dealer near you.

## Budget Pricing:

If your project is located outside our major markets, we offer an alternative method for a price quote. On our website, follow the PRODUCTS menu to the Budget Pricing page. Our Inside Sales staff will process your quote within 72 hours.

## More Information?

We encourage you to visit our website at [www.FleetwoodUSA.com](http://www.FleetwoodUSA.com).

## Important

The Limited Lifetime Warranty and Care & Maintenance Instructions are available on our website.



Conformance to:  
AAMA/WDMA/CSA 101/I.S.2

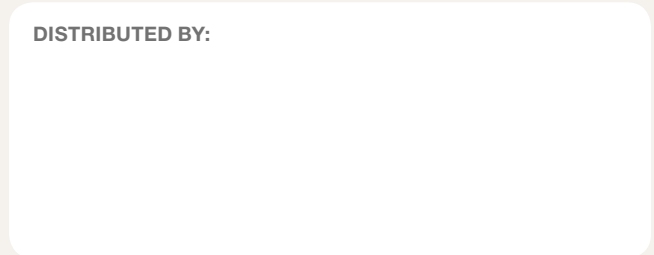
## Fleetwood Windows & Doors

1 Fleetwood Way, Corona, CA 92879  
P.O. Box 1086, Corona, CA 92878-1086

800.736.7363  
951.279.1070

[www.FleetwoodUSA.com](http://www.FleetwoodUSA.com)  
[Sales@FleetwoodUSA.com](mailto:Sales@FleetwoodUSA.com)

DISTRIBUTED BY:



\*Authorized Dealers can buy glass to install in Fleetwood products. If you desire factory glazing and the subsequent glass warranty, make sure the dealer is providing factory glazed doors and windows.



All detail subject to change without notice. November, 2018.  
Copyright © 2018 Fleetwood Windows & Doors. All rights reserved.