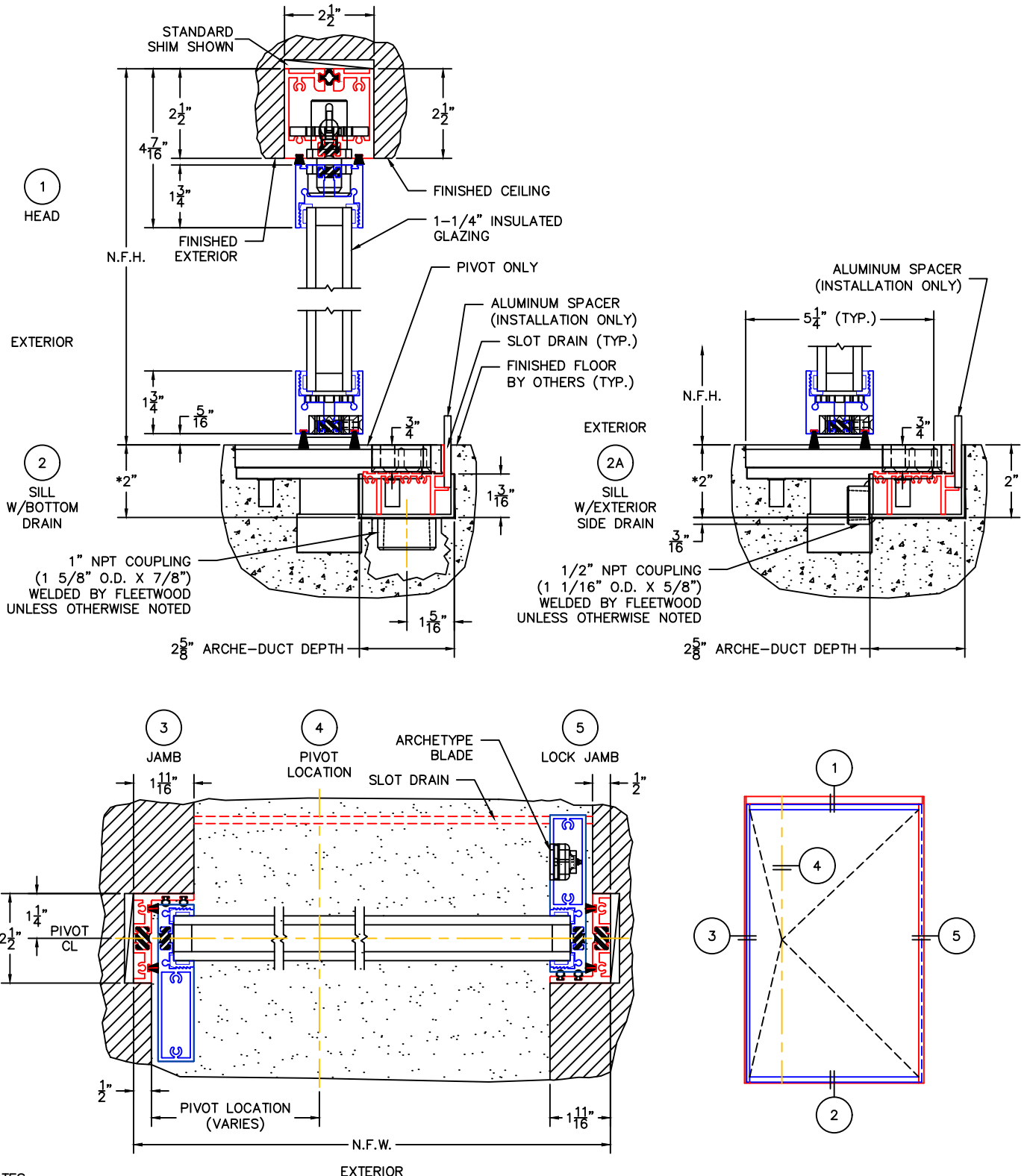


PIVOT DOOR DETAILS WITH PIVOT ONLY  
(1-1/4" INSULATED GLAZING SHOWN)

(USE RULER TO SCALE DIMENSIONS IN INCHES)

SCALE: 1/4



NOTES:

1. NET FRAME HEIGHT IS FROM FINISHED FLOOR (DOES NOT INCLUDE SILL OR ARCHE-DUCT).
2. NET FRAME DIMENSIONS DO NOT INCLUDE ARCHE-DUCT.
3. GLASS PENETRATION: 9/16"
4. FOR ADDITIONAL OPTIONS SEE EDGE\_p-03

NOTES (CONT'D):

5. \*ARCHE-DUCT MINIMUM R.O. (REFER TO INSTALLATION INSTRUCTIONS FOR RIXSON CLOSER MINIMUM R.O. REQUIREMENTS.)