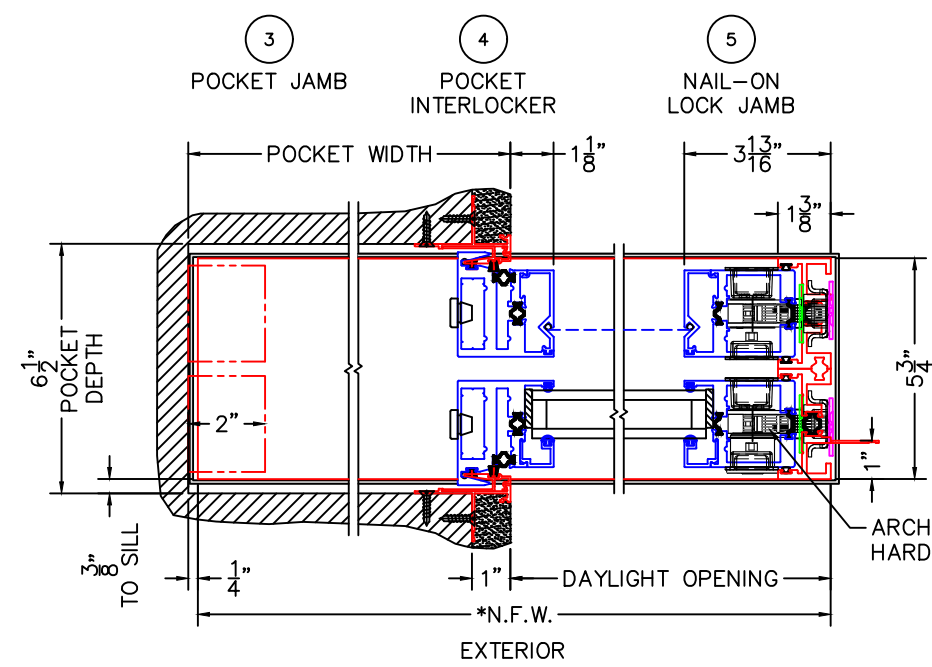
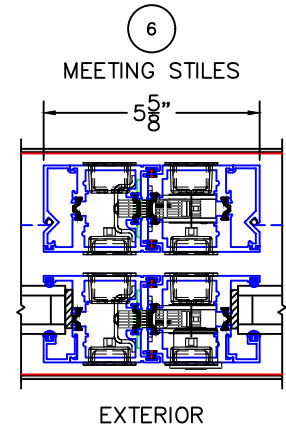
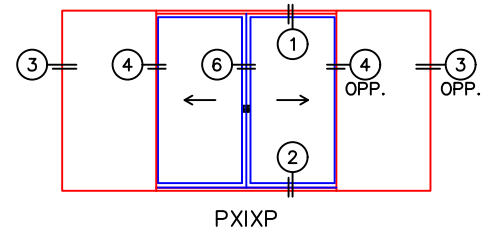
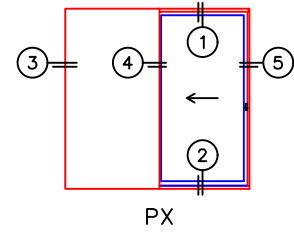
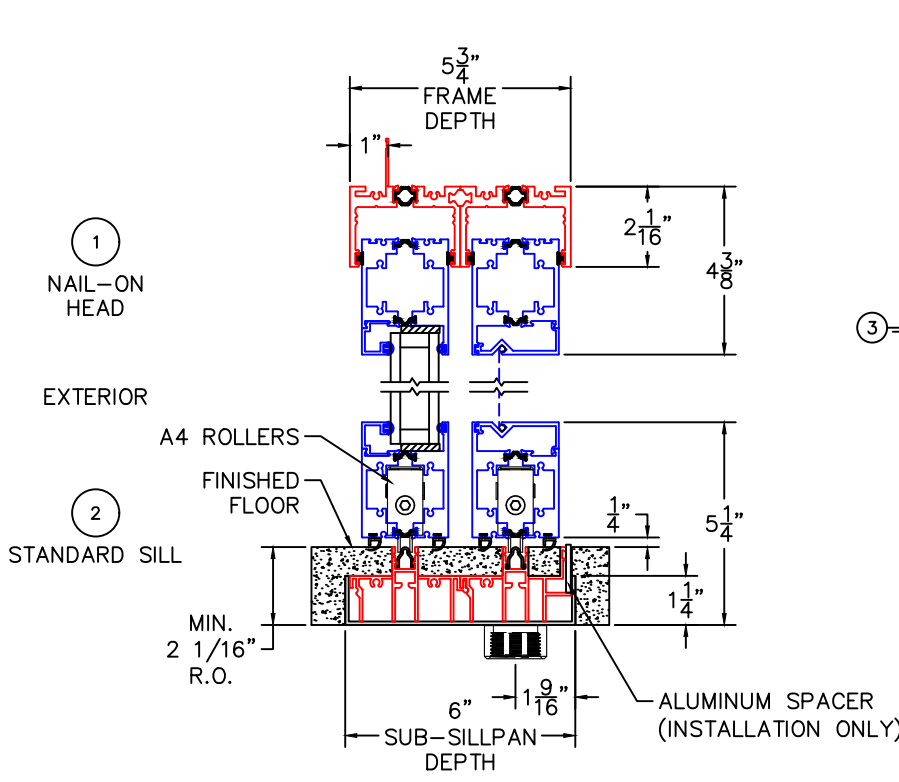


(USE RULER TO SCALE DIMENSIONS IN INCHES)
SCALE: 1/5

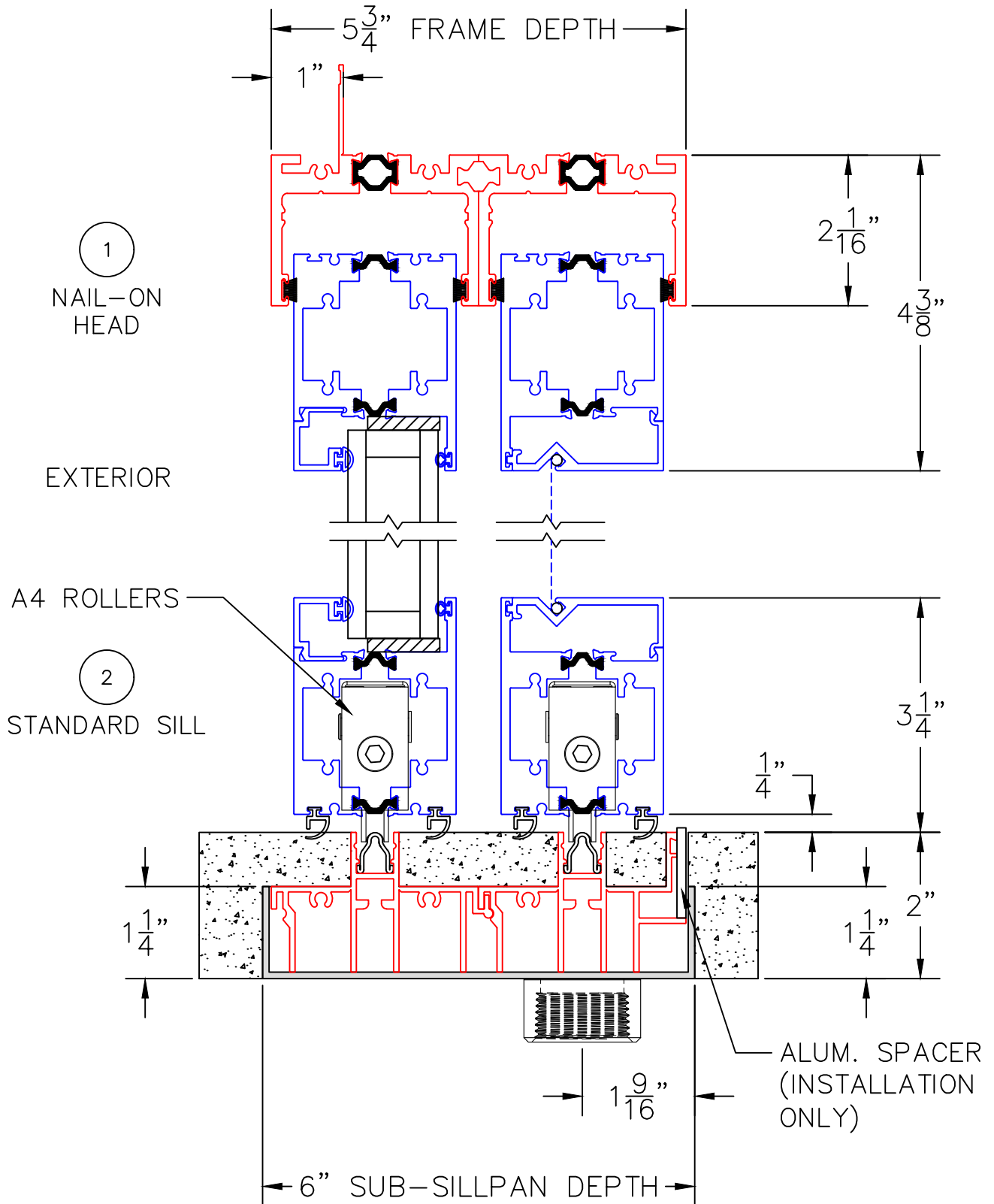
POCKET DOOR W/SCREENS DETAILS
 (NAIL-ON FRAME SHOWN)
 1-1/4" INSULATED GLAZING SHOWN
 (9/16" SINGLE & 1-1/2" I.G. AVAILABLE)



-GLASS PENETRATION = 9/16"
 -NET FRAME HEIGHT INCLUDES SUB-SILLPAN.
 -*NET FRAME WIDTH DOES NOT INCLUDE SUB-SILLPAN.
 -SUB-SILLPAN EXTENDS 1/4" BEYOND EACH JAMB.

0 1 2
(USE RULER TO SCALE DIMENSIONS IN INCHES)
SCALE: 1/2

MULTI-SLIDE DOOR DETAILS
PX DOOR SHOWN WITH
1-1/4" INSULATED GLAZING



0 1 2
(USE RULER TO SCALE DIMENSIONS IN INCHES)
SCALE: 1/2

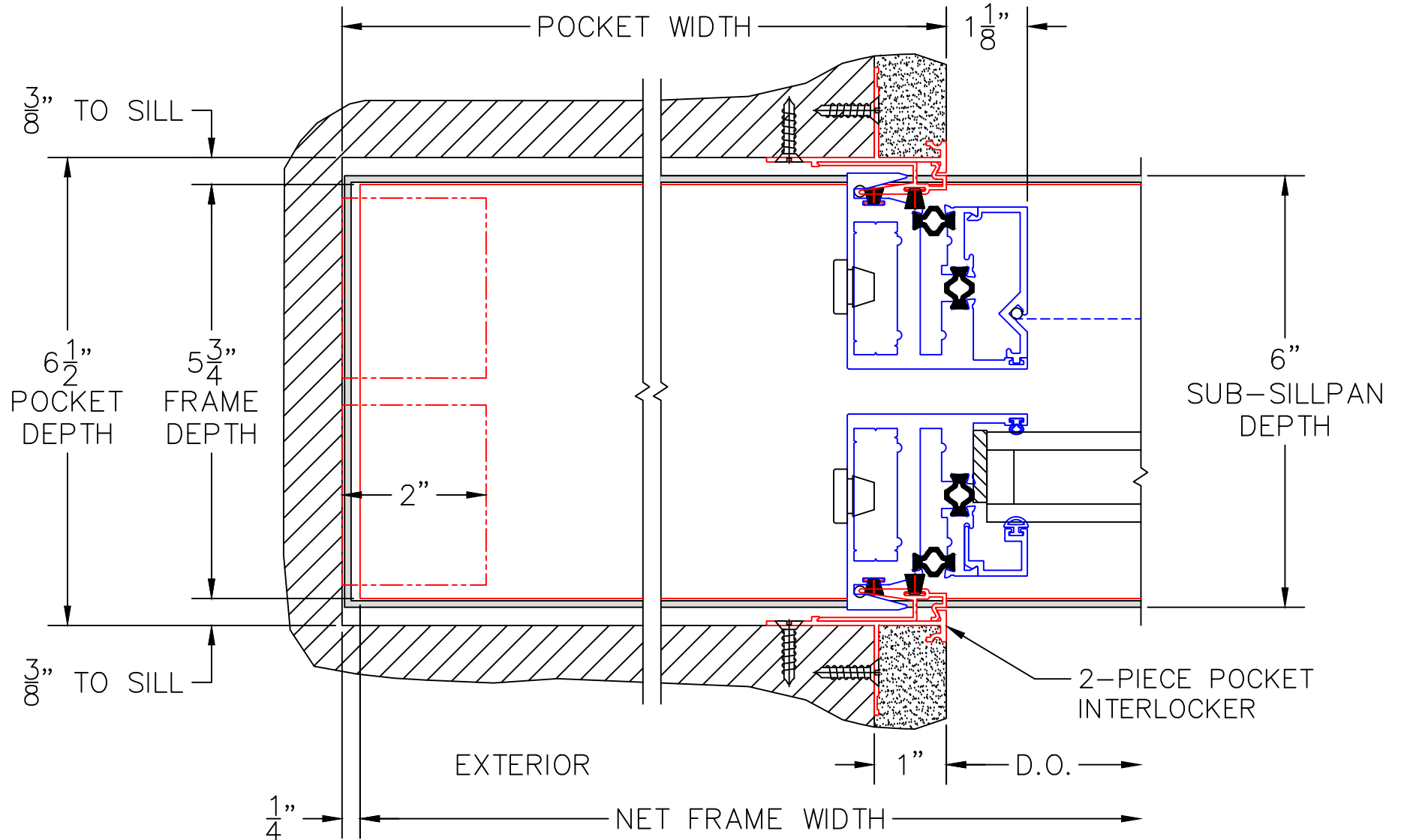
MULTI-SLIDE DOOR DETAILS
PX DOOR SHOWN WITH
1-1/4" INSULATED GLAZING

3

4

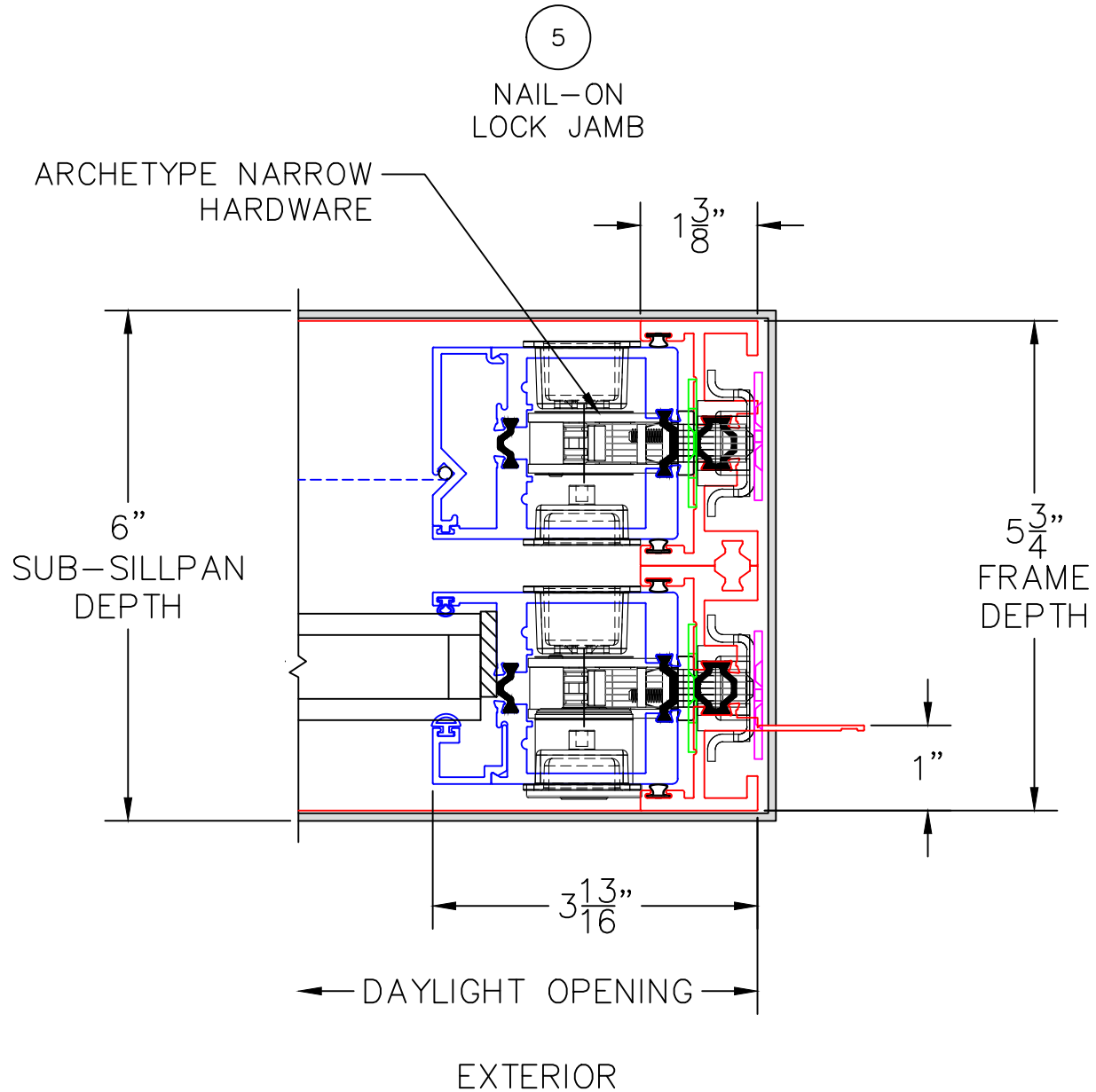
POCKET JAMB

POCKET INTERLOCKER



0 1 2
 (USE RULER TO SCALE DIMENSIONS IN INCHES)
SCALE: 1/2

MULTI-SLIDE DOOR DETAILS
 PX DOOR SHOWN WITH
 1-1/4" INSULATED GLAZING



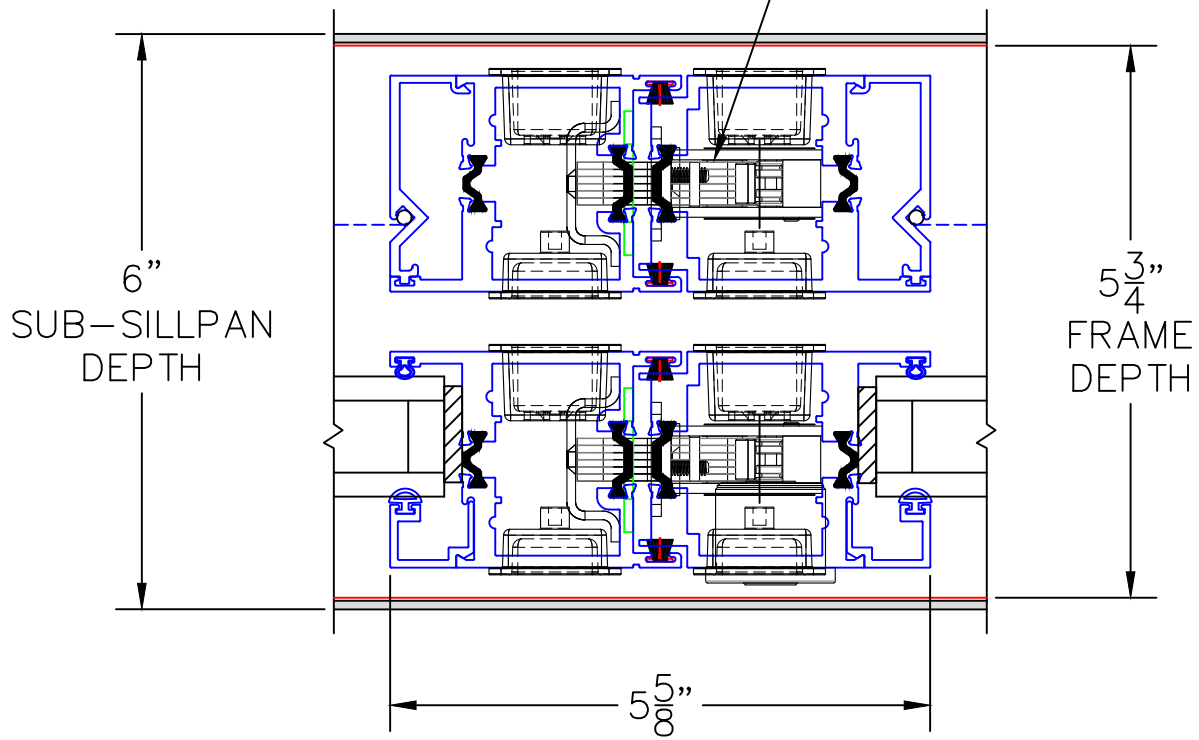
0 1 2
 (USE RULER TO SCALE DIMENSIONS IN INCHES)
SCALE: 1/2

MULTI-SLIDE DOOR DETAILS
 PX DOOR SHOWN WITH
 1-1/4" INSULATED GLAZING

6

MEETING STILES

ARCHETYPE NARROW
 HARDWARE



EXTERIOR