

# ASSEMBLY / PARTS LIST (B.O.M.)

**Series: 3900-T**  
**Type: HO Hinged**

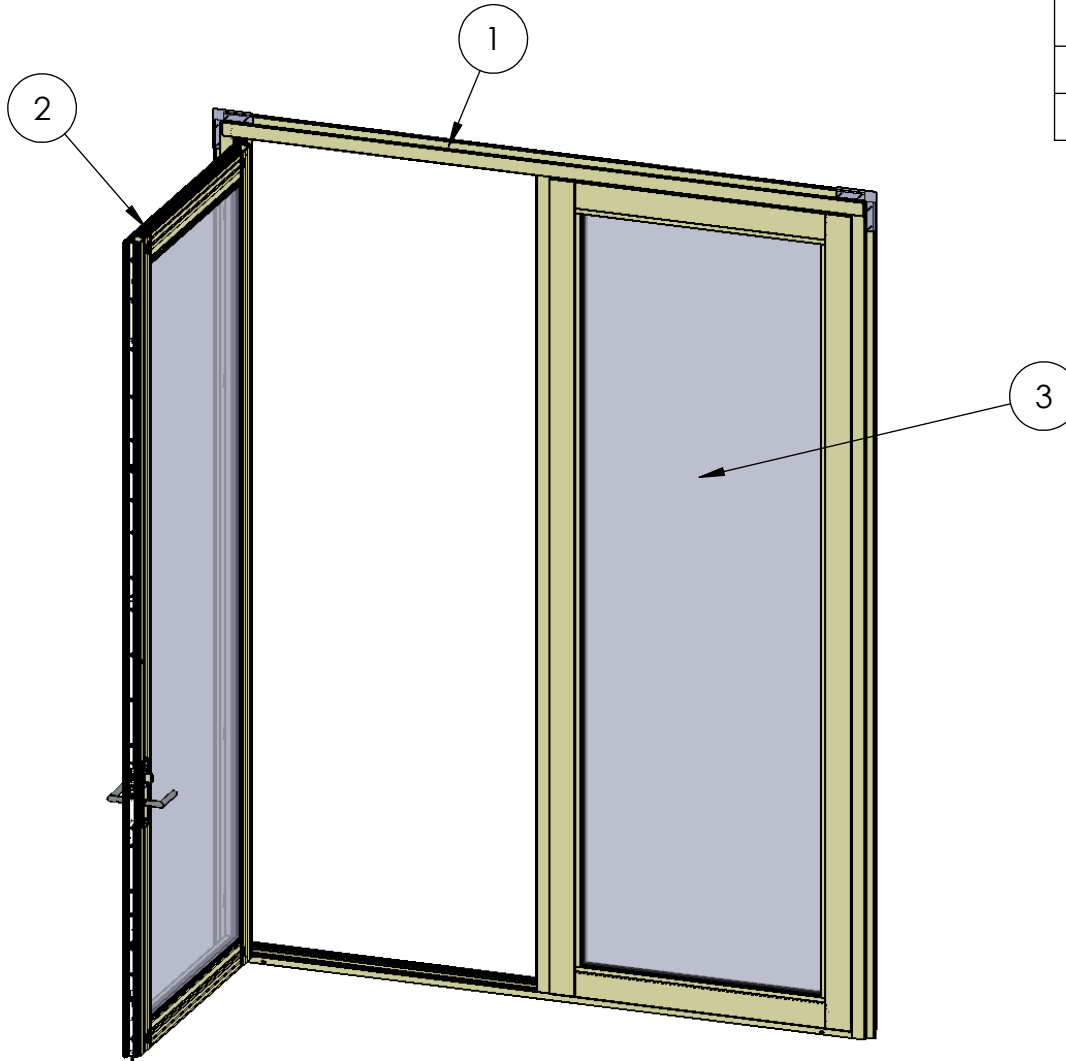


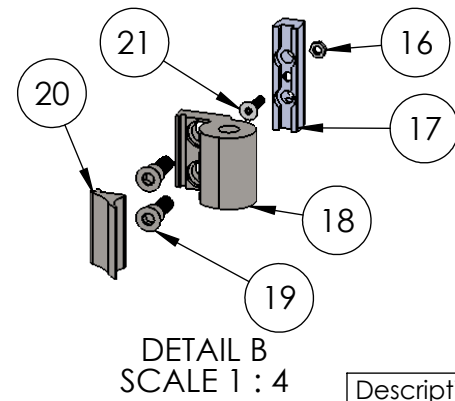
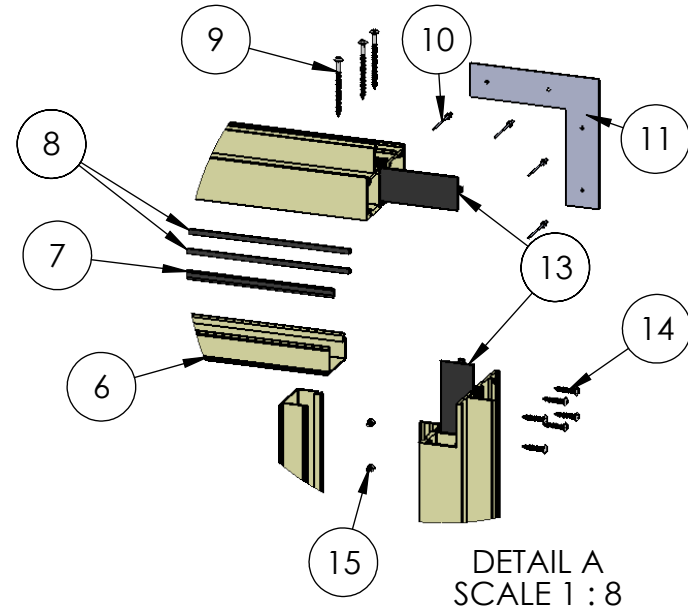
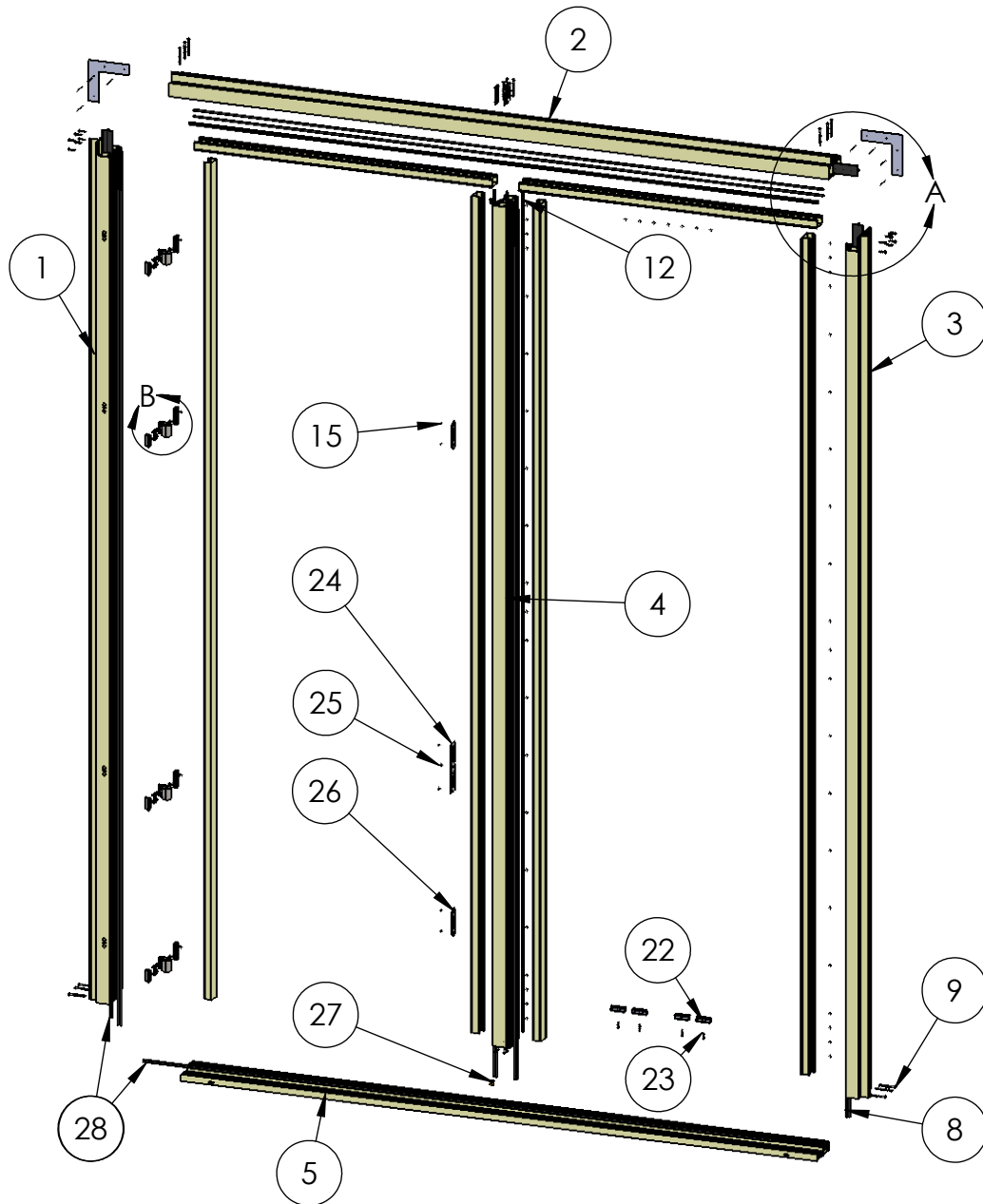
TABLE OF CONTENTS			
ITEM NO.	DESCRIPTION	QTY.	PAGE #
1	Frame Assembly	1	2-3
2	Active Panel (Left Shown)	1	4
3	Wide Style Sidelite	1	5
4	Active/Wide Style B.O.M.	-	6

**NOTES:**  
 1. Out-swing door configuration shown.

**PROPRIETARY AND CONFIDENTIAL**  
 THE INFORMATION CONTAINED IN THIS DRAWING IS THE SOLE PROPERTY OF FLEETWOOD WINDOWS & DOORS.  
 ANY REPRODUCTION IN PART OR AS A WHOLE WITHOUT THE WRITTEN PERMISSION OF FLEETWOOD WINDOWS & DOORS IS PROHIBITED.

Description Table of Contents	
File Name Series 3900-T HO Wide Style Hinged Door	REV <b>B</b>
Released 9/18/2019	SHEET 1 OF 6

# ASSEMBLY / PARTS LIST (B.O.M.)



NOTES:  
1. Out-Swing door shown.

Description	
Frame Assembly	
File Name	REV
Series 3900-T HO Wide Style Assembly	<b>B</b>
Released	SHEET 2 OF 6
9/18/2019	

**PROPRIETARY AND CONFIDENTIAL**  
THE INFORMATION CONTAINED IN THIS DRAWING IS THE SOLE PROPERTY OF FLEETWOOD WINDOWS & DOORS.  
ANY REPRODUCTION IN PART OR AS A WHOLE WITHOUT THE WRITTEN PERMISSION OF FLEETWOOD WINDOWS & DOORS IS PROHIBITED.

# ASSEMBLY / PARTS LIST (B.O.M.)

## EXTRUSIONS

ITEM NO.	PART NUMBER	DESCRIPTION	QTY. (AS SHOWN)
1	3921,3922,3923	Jamb (Block,Out-Swing,In-Swing)	1
2	3921,3922,3923	Head Assembly	1
3	3921,3922,3923	Jamb (Block,Out-Swing,In-Swing)	1
4	3913	Frame Tee Bar Assembly	1
5	3904,3202,3510	Std. Sill (Out-Swing, In-Swing,ADA Sill)	1
6	3912	Snap-in	6

## HARDWARE

ITEM NO.	PART NUMBER	DESCRIPTION	QTY. (AS SHOWN)
7	25058	Q-Lon Foam Seal	1
8	25199	Mini Bulb Vinyl (at Head and Jambs)	10
9	25075	No. 10 Screw, PHP, 2.5 In	28
10	25504	Pop Rivet	8
11	18629	Nail-Fin Corner	2
12	25189	Q-Lon Foam Seal (at all non-hinged jambs)	3
13	24888	Frame Thermal Barrier	3
14	20350	No. 10 Screw, PHP 1 in.	12
15	20240	FHP Sheet Metal UC Screw No. 8 Size, 0.5"	53
16	26463	#10-32 Hex Nut	4
17	20535	Hinge Back Up Block	4
18	23223(CI) ,23387(Mill), 23388(Blk)	Savio-2 Wings Hinge - Frame Portion	4
19	(shipped with 20535)	FH Socket Cap Screw .312-24, 1.1"	8
20	(shipped with 20535)	Savio-2 wing hinge-R wing cover	4
21	25073	No. 10-32 Screw, FHP, .750"	4
22	20502	Sill Block (M607, 20483)	4
23	20247	#8 FHP Screw, 1 in.	4
24	24993	Latch-Deadbolt Strike Plate	1
25	20275	Screw No 10, FHP Undercut .50 In.	3
26	25056	Tongue Strike	2
27	20542	Shootbolt Cup	2
28	25059	Q-Lon Foam Seal(as Sill and Hinged Jamb)	2
34	25199	Mini Bulb Vinyl	4

Description

Frame B.O.M.

File Name

Series 3900-T HO Wide  
Style Assembly

REV  
**B**

Released

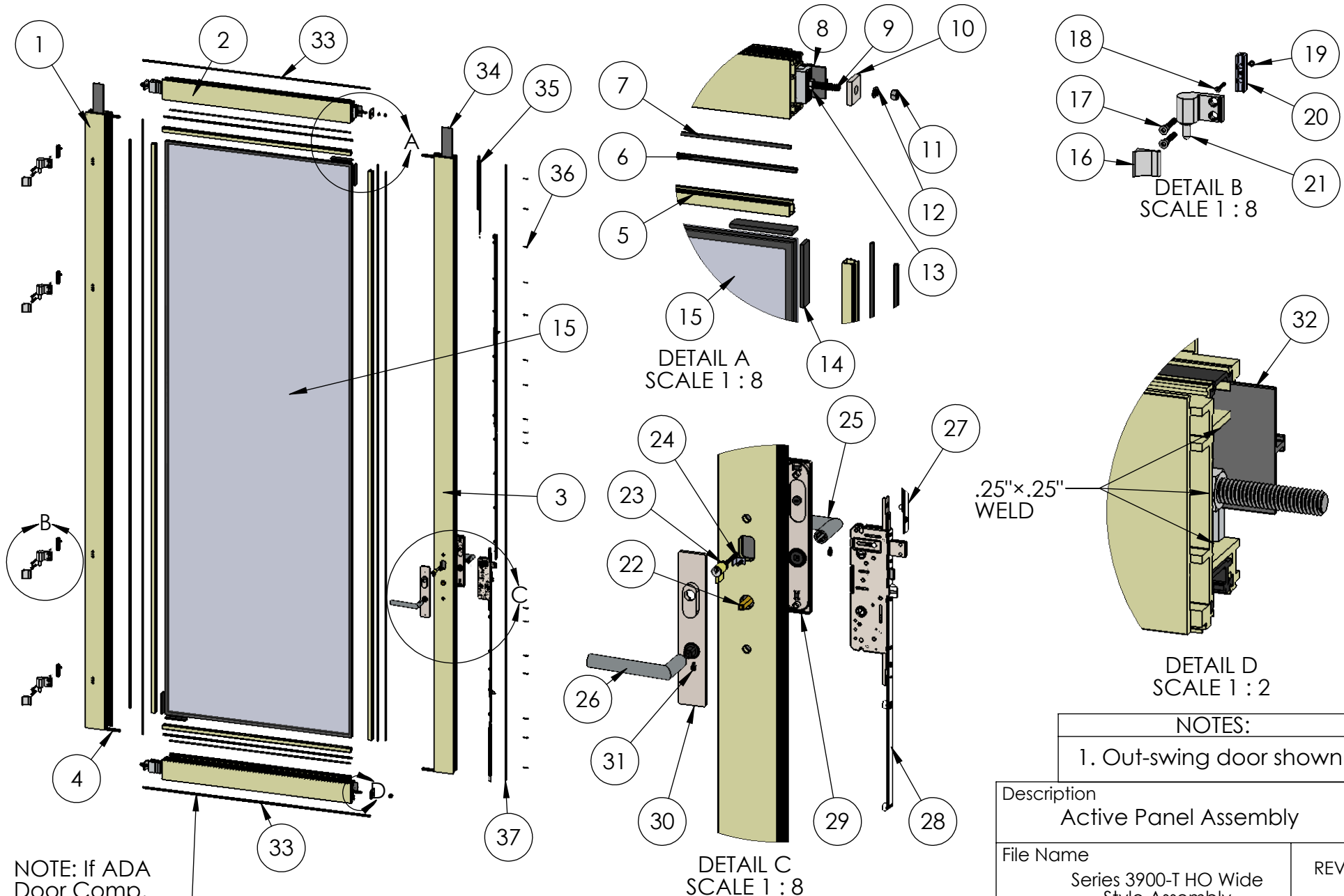
9/18/2019

SHEET 3 OF 6

**PROPRIETARY AND CONFIDENTIAL**

THE INFORMATION CONTAINED IN THIS DRAWING IS THE SOLE PROPERTY OF FLEETWOOD WINDOWS & DOORS.  
ANY REPRODUCTION IN PART OR AS A WHOLE WITHOUT THE WRITTEN PERMISSION OF FLEETWOOD WINDOWS & DOORS IS PROHIBITED.

# ASSEMBLY / PARTS LIST (B.O.M.)



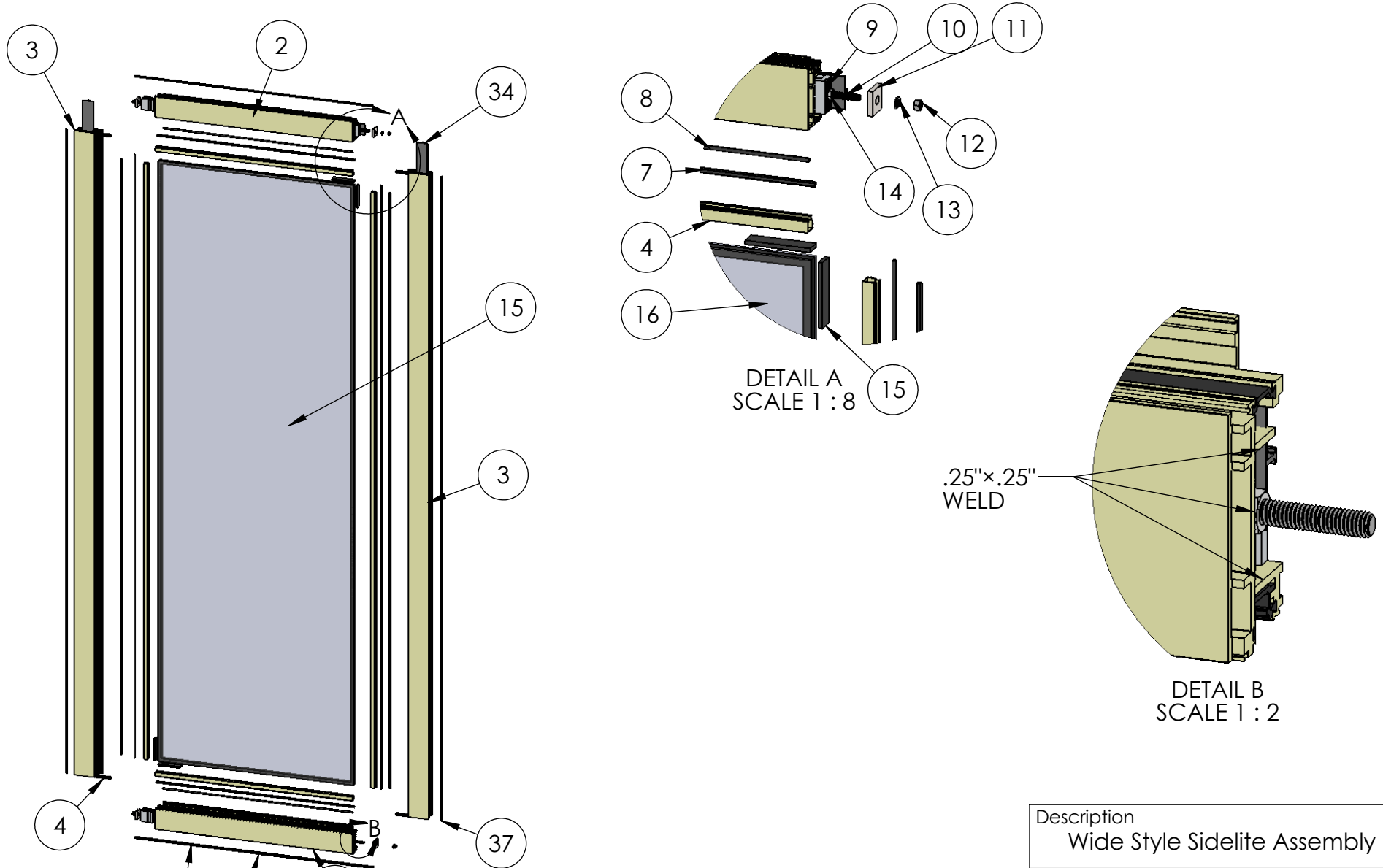
NOTE: If ADA Door Comp. #23229 bottom seal only

**PROPRIETARY AND CONFIDENTIAL**  
THE INFORMATION CONTAINED IN THIS DRAWING IS THE SOLE PROPERTY OF FLEETWOOD WINDOWS & DOORS.  
ANY REPRODUCTION IN PART OR AS A WHOLE WITHOUT THE WRITTEN PERMISSION OF FLEETWOOD WINDOWS & DOORS IS PROHIBITED.

**NOTES:**  
1. Out-swing door shown.

Description Active Panel Assembly	
File Name Series 3900-T HO Wide Style Assembly	REV -
Released 9/18/2019	SHEET 4 OF 6

# ASSEMBLY / PARTS LIST (B.O.M.)



NOTE: If ADA Door Comp. #23229 bottom seal only

**PROPRIETARY AND CONFIDENTIAL**  
 THE INFORMATION CONTAINED IN THIS DRAWING IS THE SOLE PROPERTY OF FLEETWOOD WINDOWS & DOORS.  
 ANY REPRODUCTION IN PART OR AS A WHOLE WITHOUT THE WRITTEN PERMISSION OF FLEETWOOD WINDOWS & DOORS IS PROHIBITED.

Description Wide Style Sidelite Assembly	
File Name Series 3900-T HO Wide Style Assembly	REV -
Released	9/18/2019
SHEET 5 OF 6	

# ASSEMBLY / PARTS LIST (B.O.M.)

## EXTRUSIONS

ITEM NO.	PART NUMBER	DESCRIPTION	QTY. (AS SHOWN)
1	3902	Hinge Stile	1
2	3902	Top and Bottom Rails	2
3	3902	Lock Stile	1
4	3916	Seal Clip (One per corner)	4

## HARDWARE

ITEM NO.	PART NUMBER	DESCRIPTION	QTY. (AS SHOWN)
5	3907,3908	1" Glass Stop Shown (1.5")	4
6	25031	Bulb Vinyl-Large (On Glass Stop)	2
7	25199	Mini Bulb Seal (at Panel)	2
8	25167	Corner Block	4
9	25175	.375-16 Hex Head Cap Screw, 2.25", Full Thread	4
10	25025	Back up Plate for Panel	4
11	25023	.375-16 Stainless Steel Hex Nut	4
12	25024	.375 Split Lock Washer	4
13	25176	.375-16 Stainless Steel Hex Nut, .5625 Wt, .218 Ht	4
14	18620	Setting Block 4" x 1/4"x1"	4
15	-	Glass	1
16	(Shipped with Hinge)	Savio-2 wing hinge-L wing Cover	4
17	25026	FH Socket Cap Screw .312-24, 1.89"	8
18	25074	No. 10-32 FHP Screw, 1.125"	4
19	26463	#10-32 Hex Nut	4
20	20535	Hinge Back Up Block	4
21	23223(CI) 23387(Mill), 23388(Blk)	Savio-2 Wings Hinge-Panel Portion	4
22	23203	Spindle	1
23	25063	Rim Cylinder	1
24	25187	L-Clip	1
25	23654	FSB_1076 Lever (Default)	1
26	23654	FSB_1076 Lever (Default)	1
27	See Table A	Upper Bar Assembly	1

## HARDWARE

ITEM NO.	PART NUMBER	DESCRIPTION	QTY. (AS SHOWN)
28	25039	Active Lower Gear Assembly, 41.35	1
29	26205, 26208	Escutcheon plate with Thumbturn (S.S., Black)	1
30	26204, 26207	Escutcheon plate w/ Cylinder Collar (S.S., Black)	1
31	(Shipped with Handle)	Socket Set Screw .250-20, .375"	2
33	25196	Q-Lon Foam Seal (on Top and Bottom Rails)	2
34	24887	Panel Thermal Barrier	2
35	25224	Shootbolt	1
36	20247	#8 FHP Screw, 1 in.	See Table A
37	25189	Q-Lon Foam Seal (Q225T190)	2

PANEL HEIGHT	COMPONENT NUMBER	SCREW/QTY.
71"-79"	25040	12
73"-81"	25041	12
81"-89"	25042	13
89"-97"	25043	14
97"-105"	25044	15
105"-113"	25045	16
113"-121"	25046,25043	19
121"-129"	25046,25044	20
129"-135"	25046,25045	21

Description  
Active/Wide Style B.O.M.

File Name  
Series 3900-T HO Wide  
Style Assembly

REV  
-

Released 9/18/2019 SHEET 6 OF 6

**PROPRIETARY AND CONFIDENTIAL**

THE INFORMATION CONTAINED IN THIS DRAWING IS THE SOLE PROPERTY OF FLEETWOOD WINDOWS & DOORS.  
ANY REPRODUCTION IN PART OR AS A WHOLE WITHOUT THE WRITTEN PERMISSION OF FLEETWOOD WINDOWS & DOORS IS PROHIBITED.