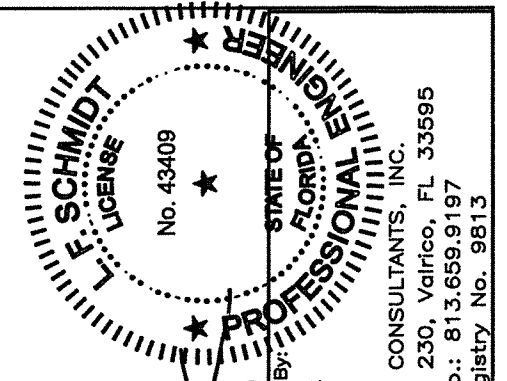


FRAME MOUNT

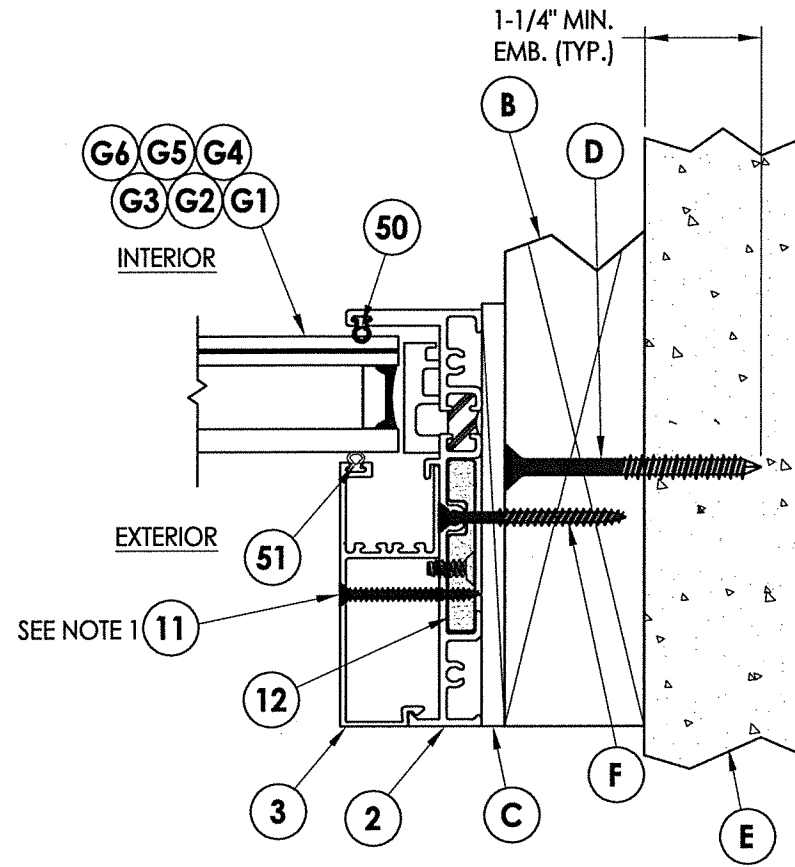


August 10, 2020
 Documents Prepared By:
 Lyndon F. Schmidt
 P.E. No. 43409

RW
 BUILDING CONSULTANTS, INC.
 P.O. Box 230, Valrico, FL 33595
 Phone No.: 813.659.9197
 FBPE Registry No. 9813

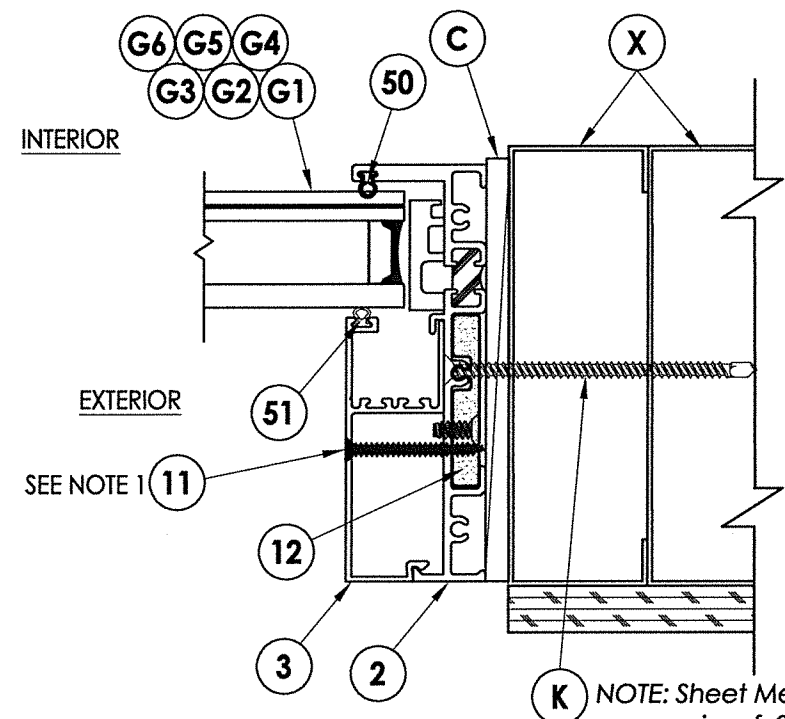
DATE: 11/2/15		PRODUCT: FLEETWOOD WINDOWS AND DOORS	
SCALE: N.T.S.		PART OR ASSEMBLY: ELEVATIONS	
DWG. BY: JK	CHK. BY: LFS	REVISIONS	
DRAWING NO.: FL-16925.4		NO. DATE	
SHEET 2 of 7		3	8/10/20 UPDATE TO 7th ED. (2020) FBC DAC
		2	08/03/17 UPDATE TO 6TH ED. (2017) FBC LFS
		1	08/22/16 REVISE SERIES NAME JK
			BY

\\dc01\pwb\clients\Fleetwood PERMANENTVA - Florida Product Approvals\FL-16925 (2020)\FL-16925.4.dwg



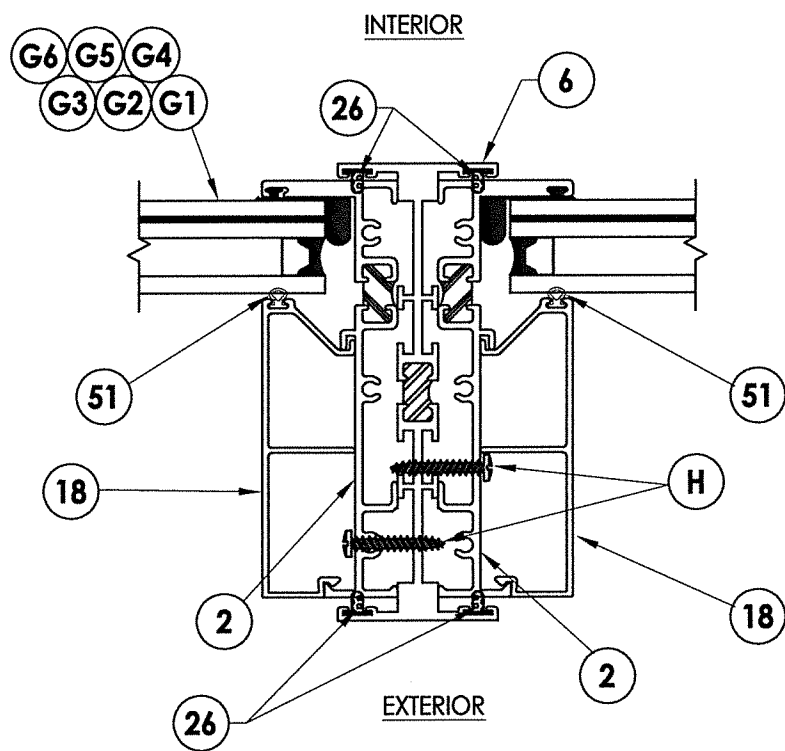
1 HORIZONTAL CROSS SECTION
3 Shown w/ 2X Buck option

NOTES:
 1. Item #11 located 6" from each end and one in center along jambs (3 total).

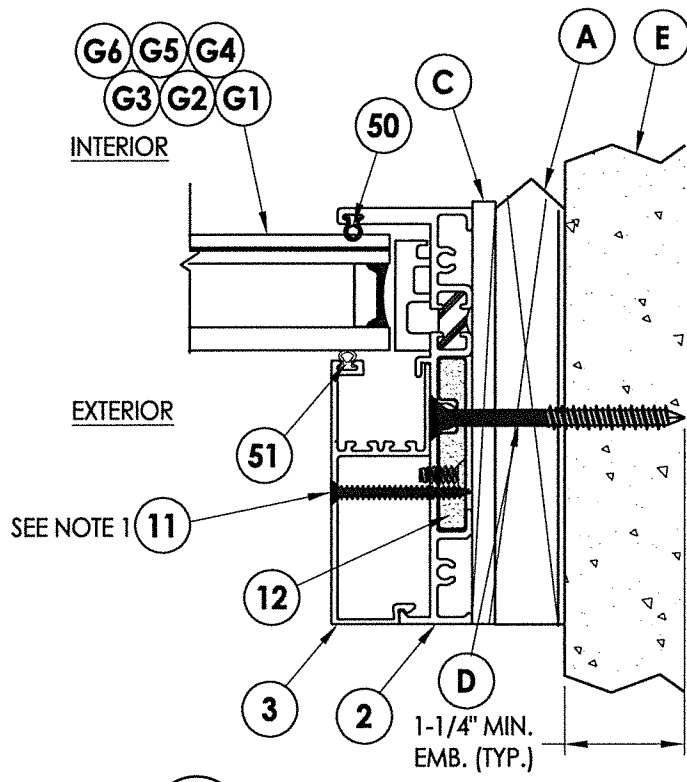


3 HORIZONTAL CROSS SECTION
3 Shown w/ Steel Stud option

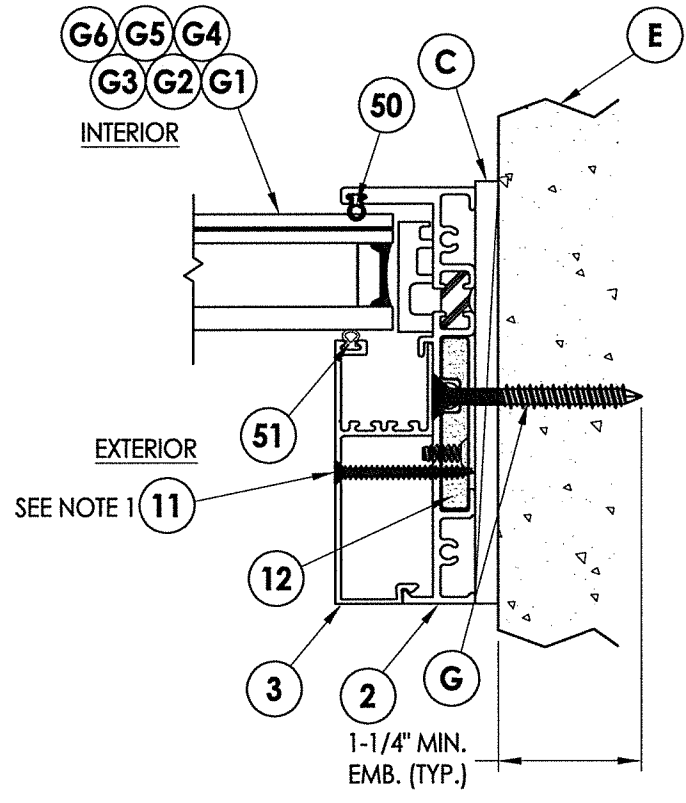
NOTE: Sheet Metal Screws must penetrate a min. of 3 threads through at least two (2) sheets of metal. Maintain a minimum 1/2" edge distance.



5 HORIZONTAL CROSS SECTION
3



2 HORIZONTAL CROSS SECTION
3 Shown w/ 1X Sub buck option



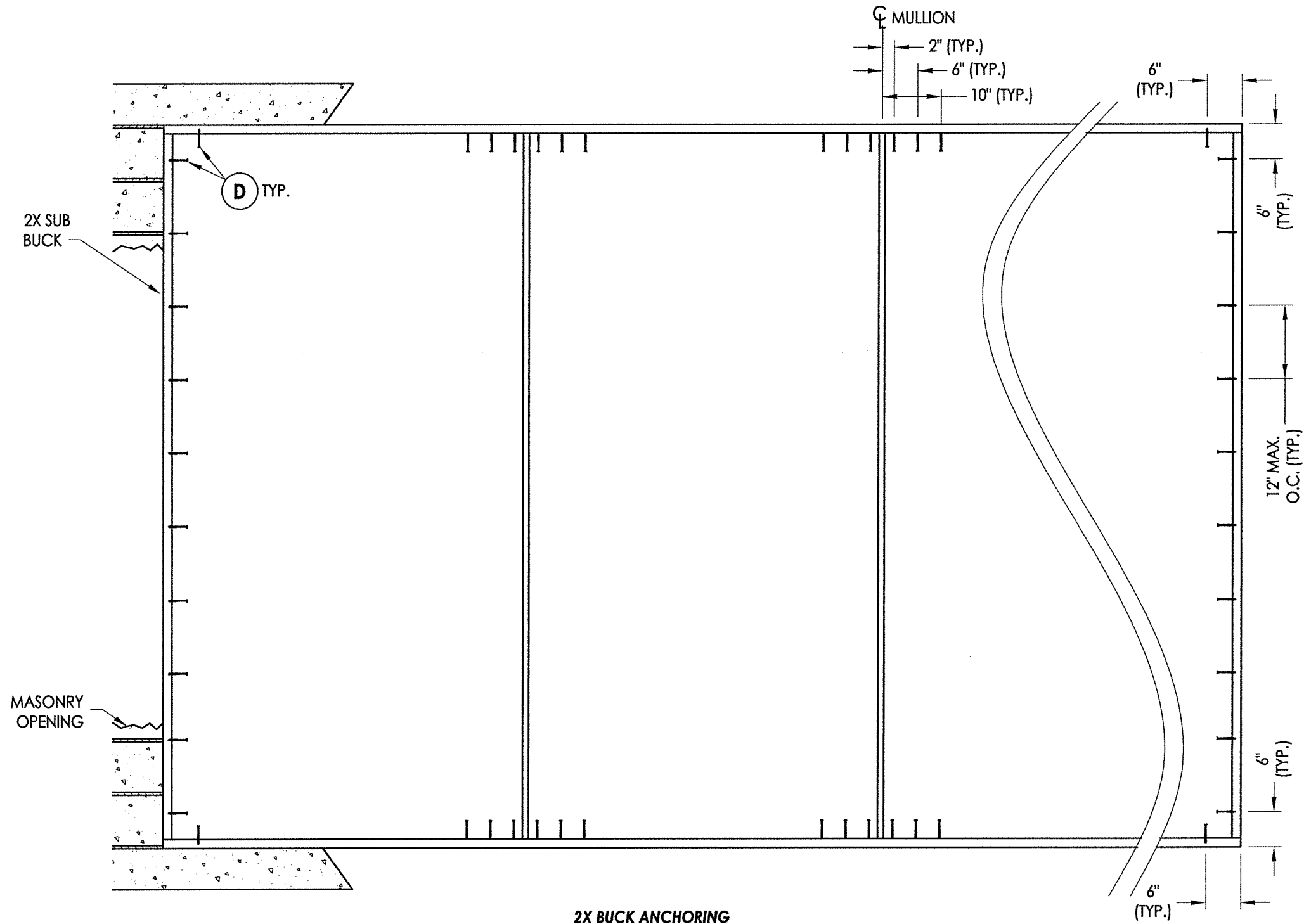
4 HORIZONTAL CROSS SECTION
3 Shown w/ Direct to Masonry option

August 10, 2020
 Documents Prepared By:
 Lyndon F. Schmidt
 P.E. No. 43409

FLORIDA PROFESSIONAL ENGINEER
 F. SCHMIDT
 LICENSE No. 43409

R.W. BUILDING CONSULTANTS, INC.
 P.O. Box 230, Valrico, FL 33595
 Phone No.: 813.659.9197
 FBPE Registry No. 9813

PRODUCT: FLEETWOOD WINDOWS AND DOORS		PART OR ASSEMBLY: HORIZONTAL CROSS SECTIONS	
NO.	DATE	REVISIONS	BY
3	8/10/20	UPDATE TO 7th ED. (2020) FBC	DAC
2	08/03/17	UPDATE TO 6th ED. (2017) FBC	LFS
1	08/22/16	REVISE SERIES NAME	JK
DATE	11/2/15		
SCALE:	N.T.S.		
DWG. BY:	JK		
CHK. BY:	LFS		
DRAWING NO.:	FL-16925.4		
SHEET	3	OF	7



2X BUCK ANCHORING

CONCRETE ANCHOR NOTES:

- Concrete anchor locations at the comers may be adjusted to maintain the min. edge distance to mortar joints.
- Concrete anchor locations noted as "MAX. ON CENTER" must be adjusted to maintain the min. edge distance to mortar joints, additional concrete anchors may be required to ensure the "MAX. ON CENTER" dimension are not exceeded.
- Concrete anchor table:

ANCHOR TYPE	ANCHOR SIZE	MIN. EMBEDMENT	MIN. CLEARANCE TO MASONRY EDGE	MIN. CLEARANCE TO ADJACENT ANCHOR
ITW TAPCON®	1/4"	1-1/4"	2"	4"
DeWALT ULTRACON®	1/4"	1-1/4"	1"	4"

WOOD SCREW INSTALLATION NOTES:

- Maintain a minimum 5/8" edge distance, 1" end distance, & 1" o.c. spacing of wood screws to prevent the splitting of wood.

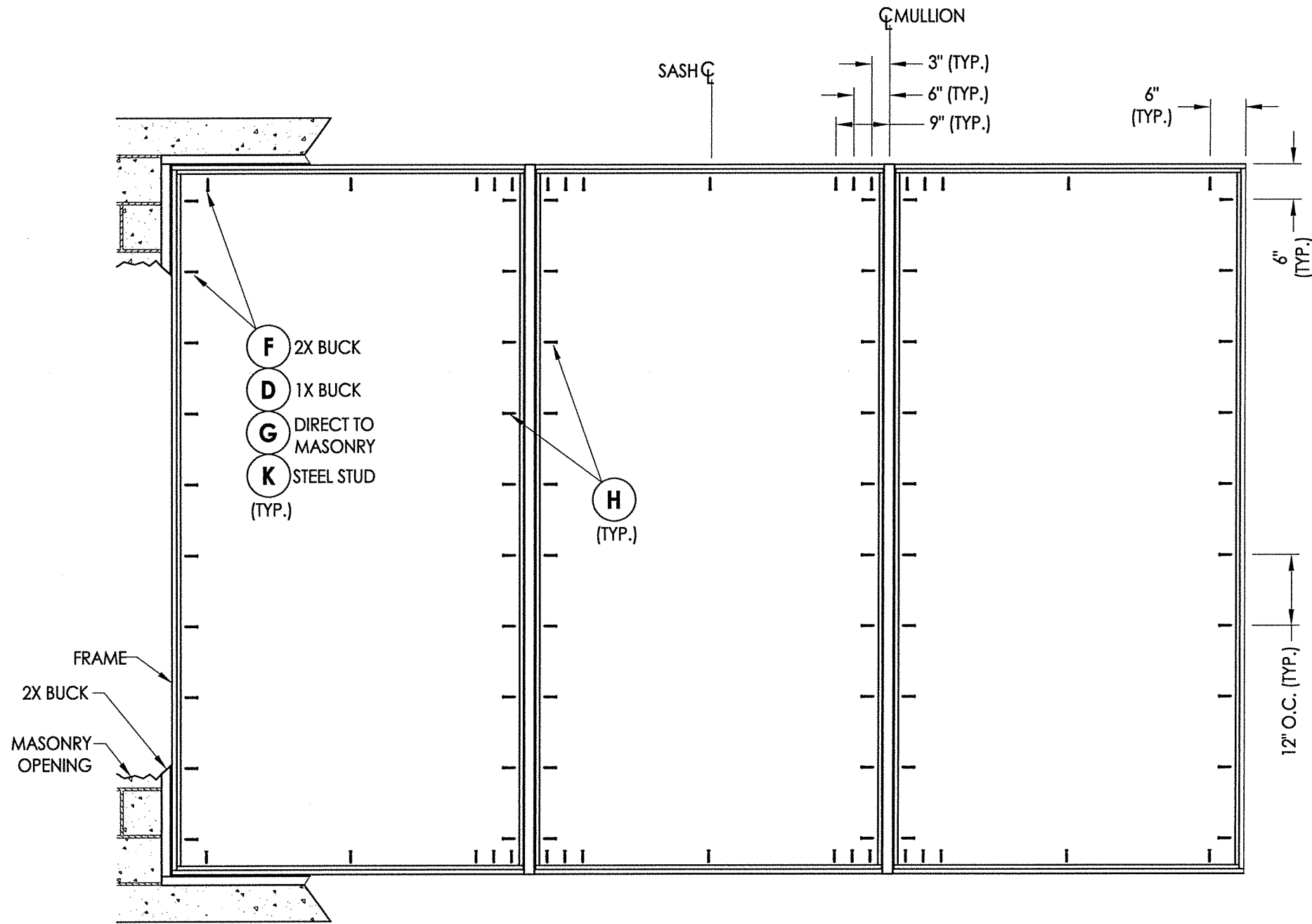
STATE OF FLORIDA
PROFESSIONAL ENGINEER
 F. SCHMIDT
 LICENSE No. 43409

August 10, 2020
 Documents Prepared By:
 Lyndon F. Schmidt
 P.E. No. 43409

RW
 BUILDING CONSULTANTS, INC.
 P.O. Box 230, Valrico, FL 33595
 Phone No.: 813.659.9197
 FBPE Registry No. 9813

PRODUCT:		FLEETWOOD WINDOWS AND DOORS	
PART OR ASSEMBLY:		BUCK ANCHORING	
NO.	DATE	REVISIONS	
3	8/10/20	UPDATE TO 7TH ED. (2020) FBC	DAC
2	08/03/17	UPDATE TO 6TH ED. (2017) FBC	LFS
1	08/22/16	REVISE SERIES NAME	JK
			BY
DATE: 11/2/15			
SCALE: N.T.S.			
DWG. BY: JK			
CHK. BY: LFS			
DRAWING NO.: FL-16925.4			
SHEET 4 OF 7			

\\dc01\pwb\clients\Fleetwood PERMANENT A - Florida Product Approvals\FL-16925 Fixed Windows\C - Drawings\FL-16925 (2020)\FL-16925.4.dwg



FRAME MOUNT ANCHORING

CONCRETE ANCHOR NOTES:

1. Concrete anchor locations at the corners may be adjusted to maintain the min. edge distance to mortar joints.
2. Concrete anchor locations noted as "MAX. ON CENTER" must be adjusted to maintain the min. edge distance to mortar joints, additional concrete anchors may be required to ensure the "MAX. ON CENTER" dimension are not exceeded.
3. Concrete anchor table:

ANCHOR TYPE	ANCHOR SIZE	MIN. EMBEDMENT	MIN. CLEARANCE TO MASONRY EDGE	MIN. CLEARANCE TO ADJACENT ANCHOR
ITW TAPCON®	1/4"	1-1/4"	2"	4"
DeWALT ULTRACON®	1/4"	1-1/4"	1"	4"

WOOD SCREW INSTALLATION NOTES:

1. Maintain a minimum 5/8" edge distance, 1" end distance, & 1" o.c. spacing of wood screws to prevent the splitting of wood.

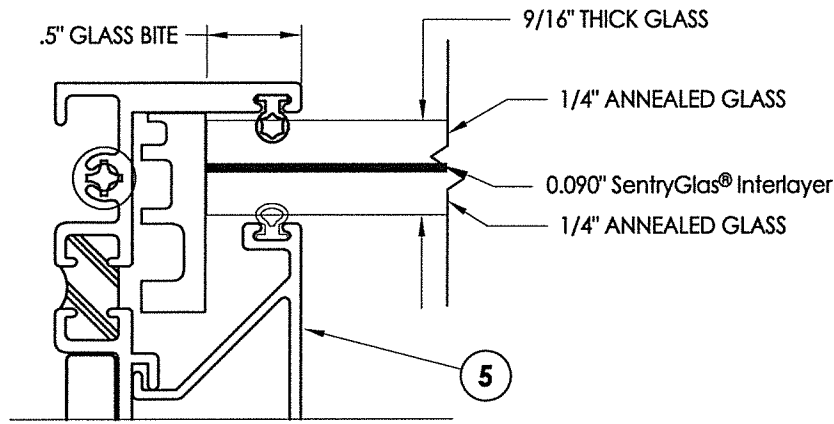
August 10, 2020
 Documents Prepared By:
 Lyndon F. Schmidt
 P.E. No. 43409

RW
 BUILDING CONSULTANTS, INC.
 P.O. Box 230, Valrico, FL 33595
 Phone No.: 813.659.9197
 FBPE Registry No. 9813

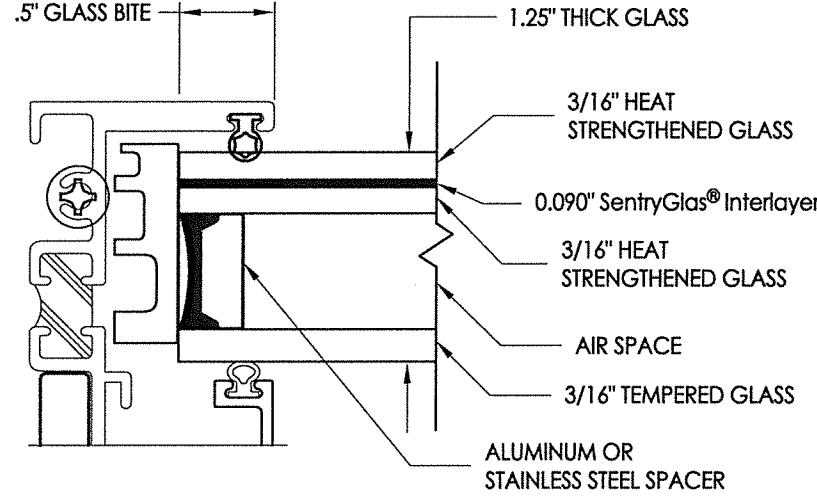
PRODUCT:		FLEETWOOD WINDOWS AND DOORS	
PART OR ASSEMBLY:		FRAME ANCHORING	
NO.	DATE	BY	REVISIONS
3	8/10/20	DAC	UPDATE TO 7TH ED. (2020) FBC
2	08/03/17	LFS	UPDATE TO 6TH ED. (2017) FBC
1	08/22/16	JK	REVISE SERIES NAME
DATE: 11/2/15			
SCALE: N.T.S.			
DWG. BY: JK			
CHK. BY: LFS			
DRAWING NO.: FL-16925.4			
SHEET 5 OF 7			

© 2015 R.W. BUILDING CONSULTANTS INC.

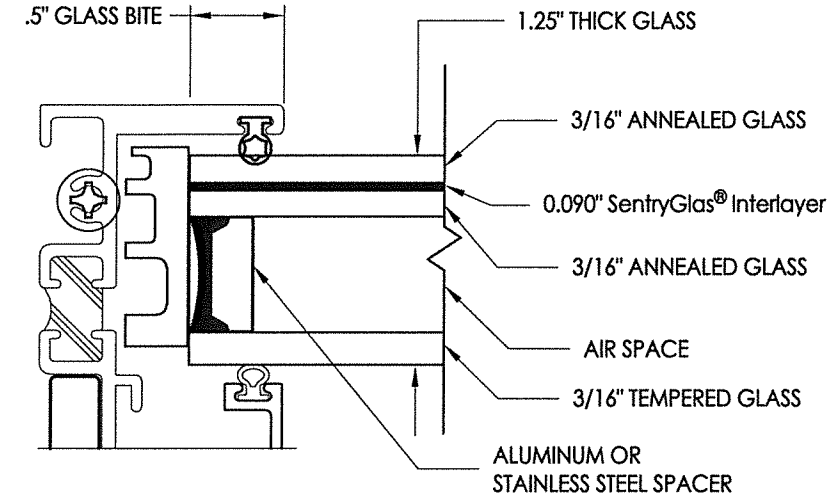
\\dc01\wbc\Clients\Fleetwood PERMANENTVA - Florida Product Approvals\FL-16925 Fixed Windows\C - Drawings\FL 16925 (2020)\FL-16925.4.dwg



G1 GLAZING DETAIL

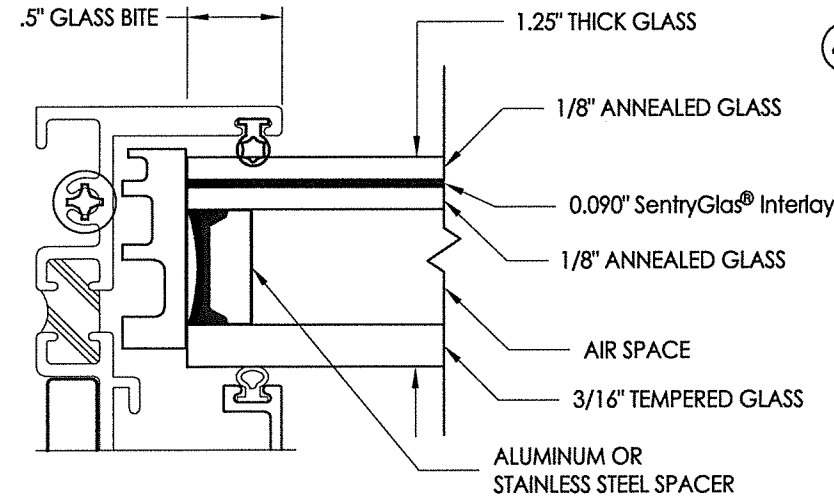


G2 GLAZING DETAIL

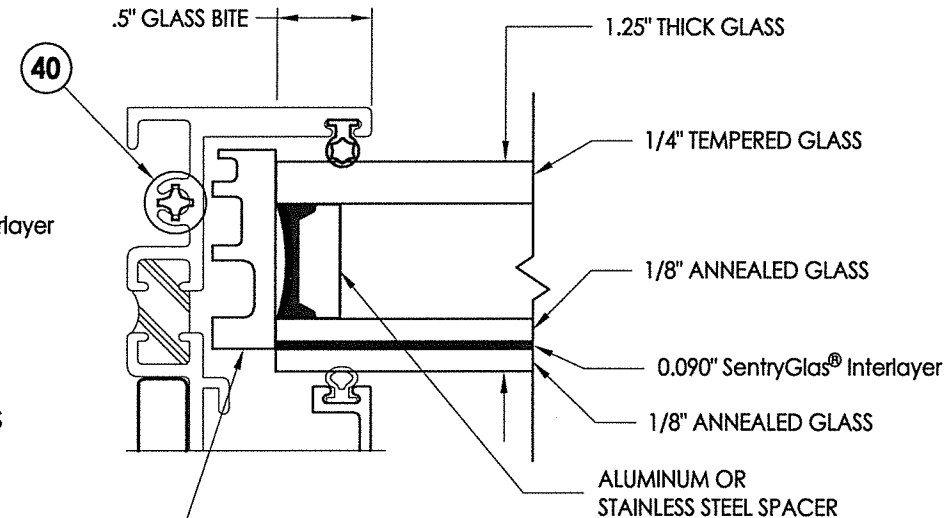


G3 GLAZING DETAIL

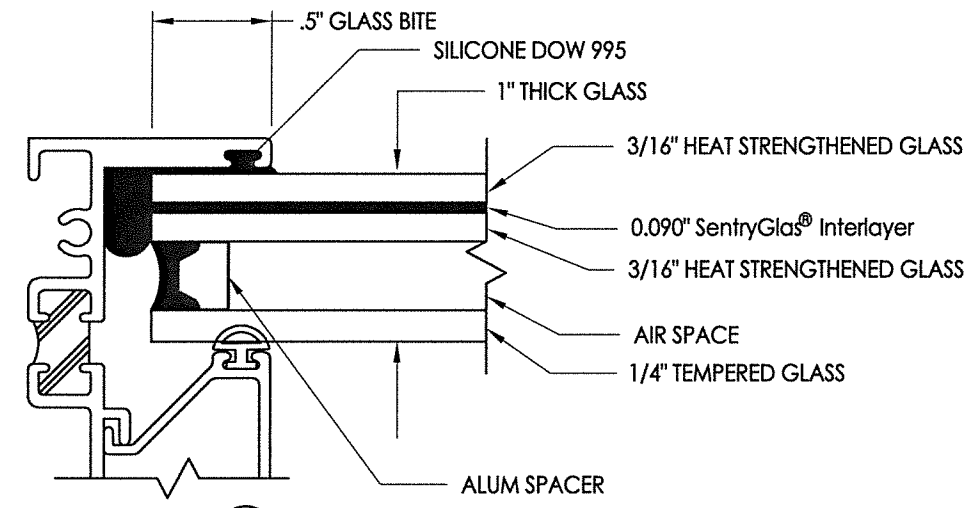
NOTE: GLAZING > 36" WIDE REQUIRES AT LEAST TWO (2) SETTING BLOCKS CONFORMING TO FBC SECTION 2411.3.3.1.



G4 GLAZING DETAIL



G5 GLAZING DETAIL



G6 GLAZING DETAIL

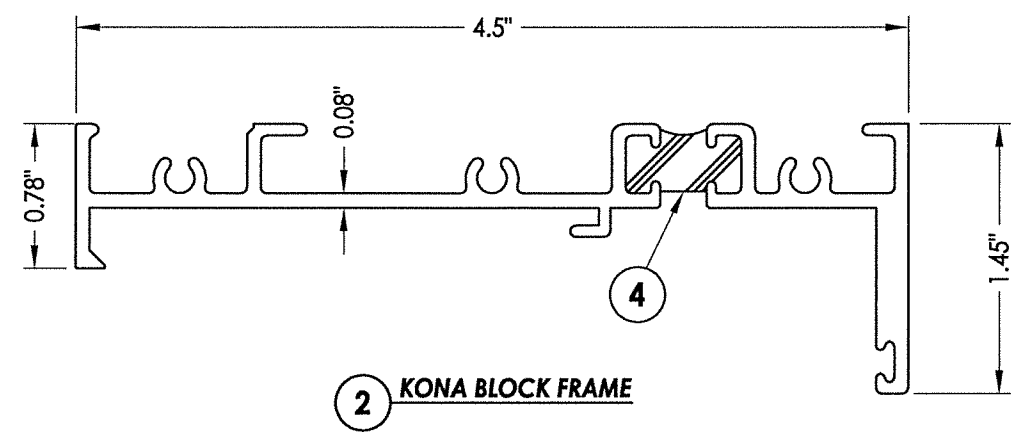
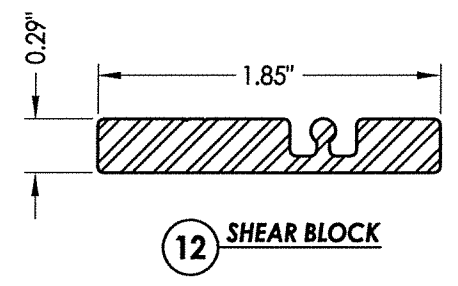
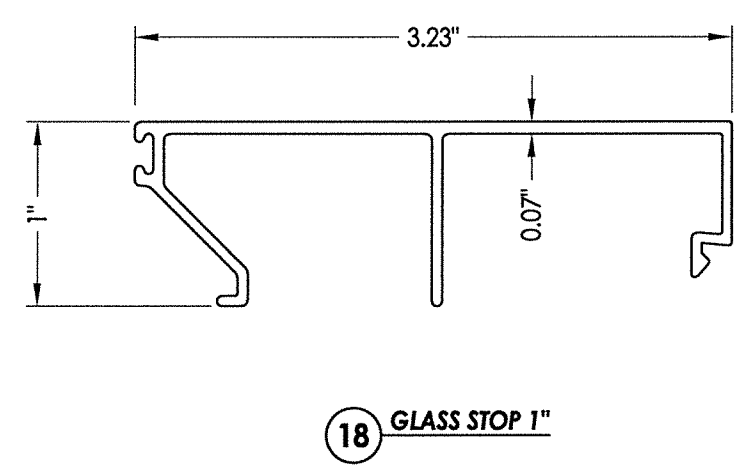
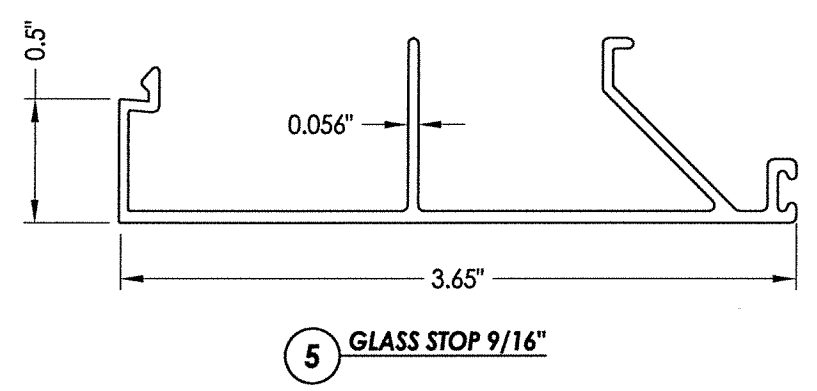
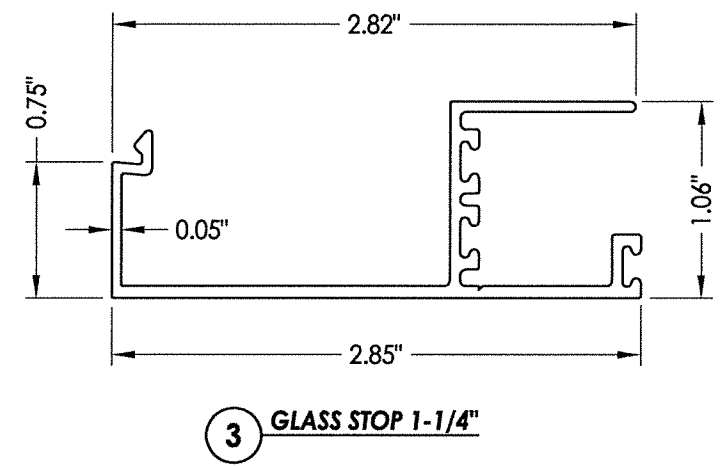
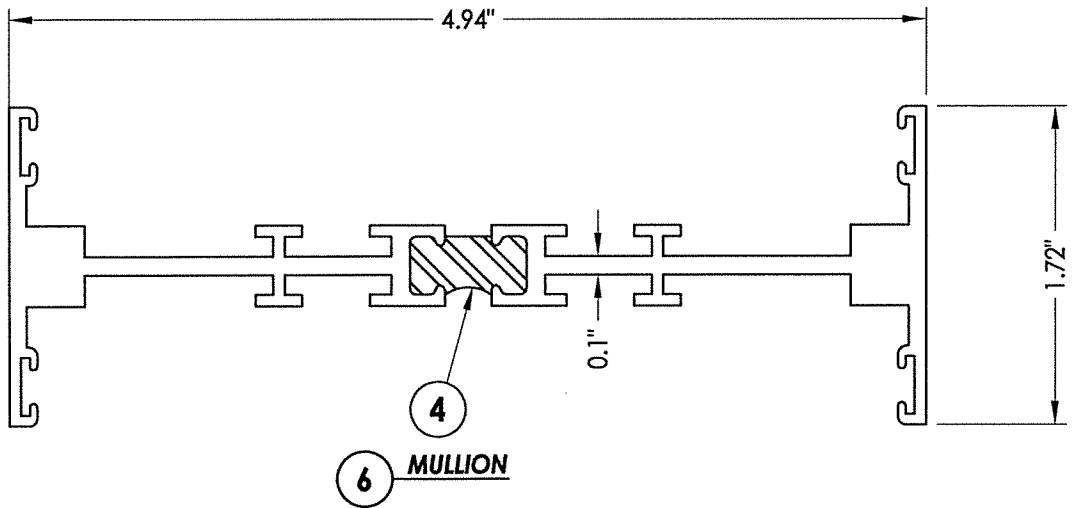
August 10, 2020
 Documents Prepared By: Lyndon F. Schmidt
 P.E. No. 43409
 No. 43409
 F. SCHMIDT
 LICENSE
 STATE OF FLORIDA
 PROFESSIONAL ENGINEER
 R.W. BUILDING CONSULTANTS, INC.
 P.O. Box 230, Vairico, FL 33595
 Phone No.: 813.659.9197
 FBPE Registry No. 9813

PRODUCT:		FLEETWOOD WINDOWS AND DOORS	
PART OR ASSEMBLY:		GLAZING DETAILS	
NO.	DATE	REVISIONS	BY
3	8/10/20	UPDATE TO 7th ED. (2020) FBC	DAC
2	08/03/17	UPDATE TO 6TH ED. (2017) FBC	LFS
1	08/22/16	REVISE SERIES NAME	JK

DATE: 11/2/15
 SCALE: N.T.S.
 DWG. BY: JK
 CHK. BY: LFS
 DRAWING NO.: FL-16925.4
 SHEET 6 OF 7

\\dc01\pwb\clients\Fleetwood PERMANENTIA - Florida Product Approvals\FL-16925 Fixed Windows\C - Drawings\FL_16925 (2020)\FL-16925.4.dwg

BILL OF MATERIALS		
ITEM #	DESCRIPTION	MATERIAL
A	1X BUCK SG >= 0.55	WOOD
B	2X BUCK SG >= 0.55	WOOD
C	1/4" MAX. SHIM SPACE	-
D	1/4" X 2-3/4" DeWALT OR ITW PFH CONCRETE SCREW	STEEL
E	MASONRY - 3000 PSI MIN. CONCRETE CONFORMING TO ACI 301 OR HOLLOW BLOCK CONFORMING TO ASTM C90	CONCRETE
F	#10 X 2" PFH WOOD SCREW (1-1/4" MIN. EMBEDMENT)	STEEL
G	1/4" x 2-1/4" DeWALT OR ITW PFH CONCRETE SCREW	STEEL
H	#10 X 2" PFH WOOD SCREW	STEEL
K	#10 FH SELF-DRILLING SMS	STEEL
L	#10 X 2" PPH WOOD SCREW (1-3/8" MIN. EMBEDMENT)	STEEL
M	#10 X 1-1/2" PPH WOOD SCREW (1-3/8" MIN. EMBEDMENT)	STEEL
N	#10 PH SELF-DRILLING SMS	STEEL
X	STEEL STUD Min. Thk .033" (ASTM A653 GRADE 33 Fy=33 Ksi Min, Fu=45 Ksi Min)	STEEL
2	KONA BLOCK FRAME	6063-T6 ALUM
3	GLASS STOP (1-1/4")	6063-T6 ALUM
4	THERMAL BREAK ("LIQUID POLYURETHANE" by Azon USA, Inc.)	-
5	GLASS STOP (1-1/4")	6063-T6 ALUM
6	MULLION	6063-T6 ALUM
11	#8 X 1-1/2" PFH SMS	STEEL
12	SHEAR BLOCK	6061-T6 ALUM
18	GLASS STOP (1")	6061-T6 ALUM
26	Q-LON FOAM SEAL	FOAM
40	#10 X 1" PPH SMS	STEEL
50	BULB VINYL (EPDM 70 DUROMETER) - TREMCO	-
51	MINI BULB VINYL (EPDM 70 DUROMETER) - TREMCO	-
55	SETTING BLOCK	-



August 10, 2020
 Documents Prepared By: Lyndon F. Schmidt
 P.E. No. 43409

FLORIDA PROFESSIONAL ENGINEER
 F. SCHMIDT
 LICENSE No. 43409

R.W. BUILDING CONSULTANTS, INC.
 P.O. Box 230, Valrico, FL 33595
 Phone No.: 813.659.9197
 FBPE Registry No. 9813

PRODUCT:	FLEETWOOD WINDOWS AND DOORS
PART OR ASSEMBLY:	BILL OF MATERIALS AND COMPONENTS
DATE:	11/2/15
SCALE:	N.T.S.
DWG. BY:	JK
CHK. BY:	LFS
DRAWING NO.:	FL-16925.4
SHEET	7 OF 7

NO.	DATE	REVISIONS
3	8/10/20	UPDATE TO 7th ED. (2020) FBC DAC
2	08/03/17	UPDATE TO 6TH ED. (2017) FBC LFS
1	08/22/16	REVISE SERIES NAME JK
		BY