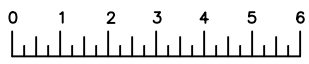
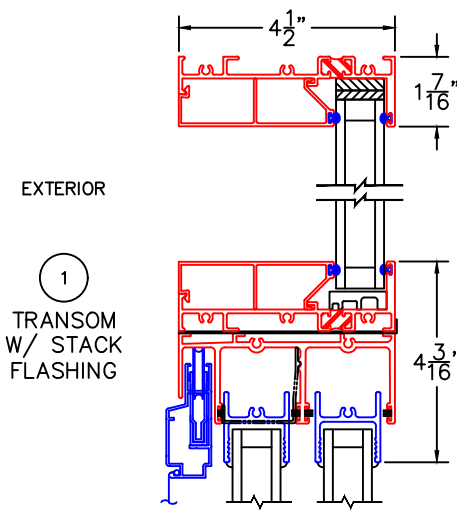


[Product Specifications Click Here](#)



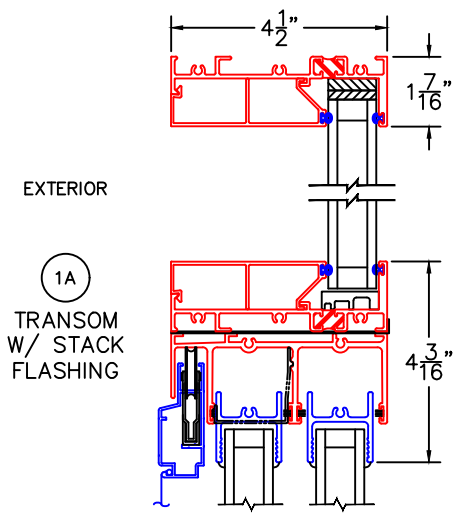
(USE RULER TO SCALE DIMENSIONS IN INCHES)  
SCALE: 1/4"

## TRANSOM DETAILS



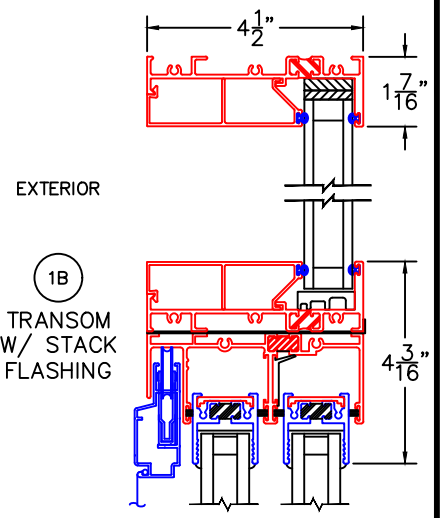
EXTERIOR  
①  
TRANSOM W/ STACK FLASHING

SERIES 3800-T/  
SERIES 1000



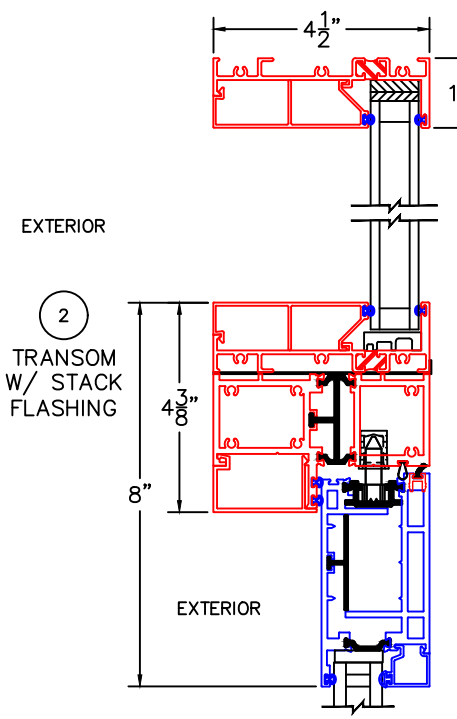
EXTERIOR  
①A  
TRANSOM W/ STACK FLASHING

SERIES 3800-T/  
SERIES 3000



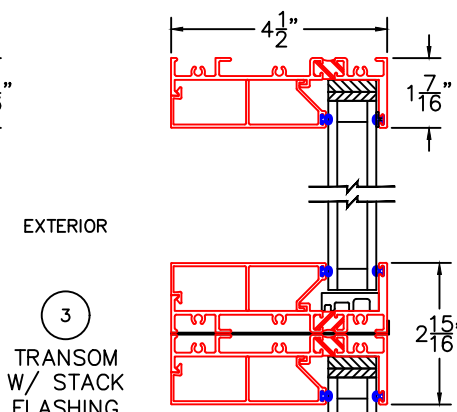
EXTERIOR  
①B  
TRANSOM W/ STACK FLASHING

SERIES 3800-T/  
SERIES 3000-T

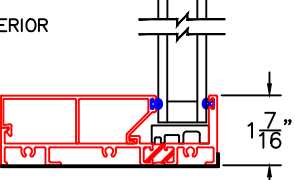


EXTERIOR  
②  
TRANSOM W/ STACK FLASHING

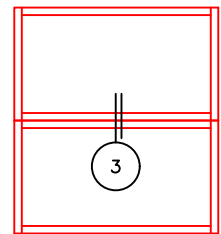
SERIES 3800-T/  
SERIES 3900-T (IN-SWING)



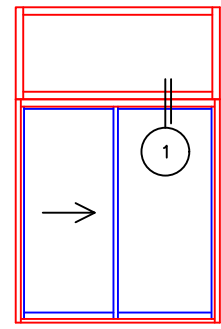
EXTERIOR  
③  
TRANSOM W/ STACK FLASHING



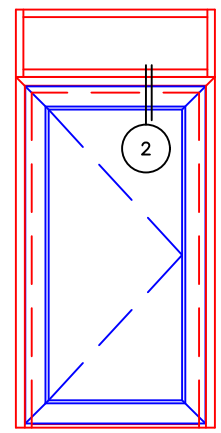
EXTERIOR  
SERIES 3800-T/  
SERIES 3800-T



3800-T STACKED ON 3800-T



3800-T STACKED ON SLIDING DOOR



3800-T STACKED ON SWING DOOR

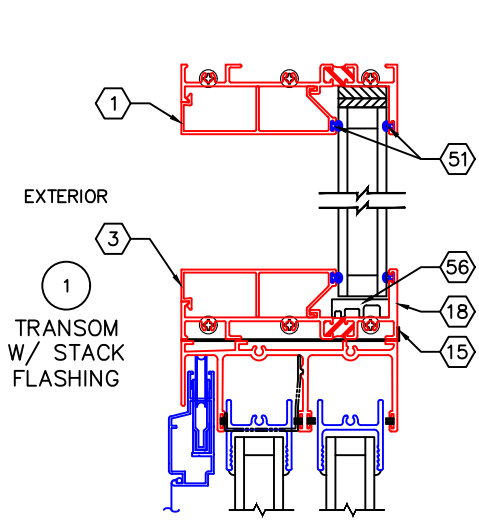
-SEE MULLION & TRANSOM INSTALLATION INSTRUCTIONS FOR RECOMMENDED METHODS OF JOINING FLEETWOOD PRODUCTS.  
-EXTERIOR RATED PRODUCTS HAVE WEEP SLOTS ON HORIZONTAL SILLS.



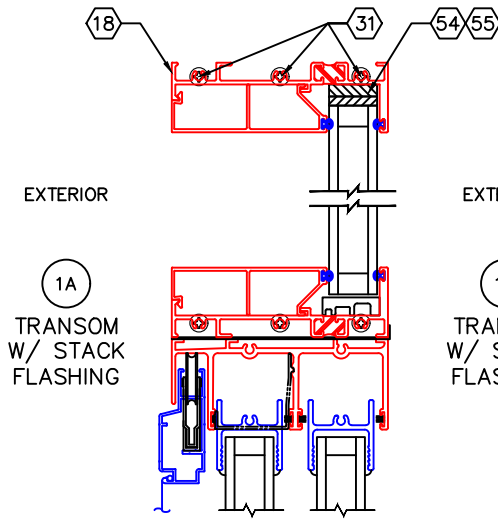
(USE RULER TO SCALE DIMENSIONS IN INCHES)  
**SCALE: 1/4**

## TRANSOM DETAILS

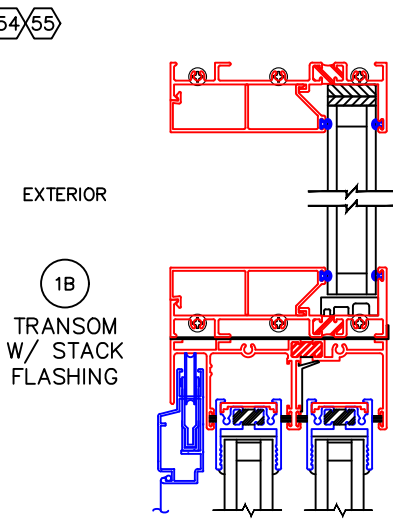
[Architecturals Click Here](#)   [Parts List Click Here](#)



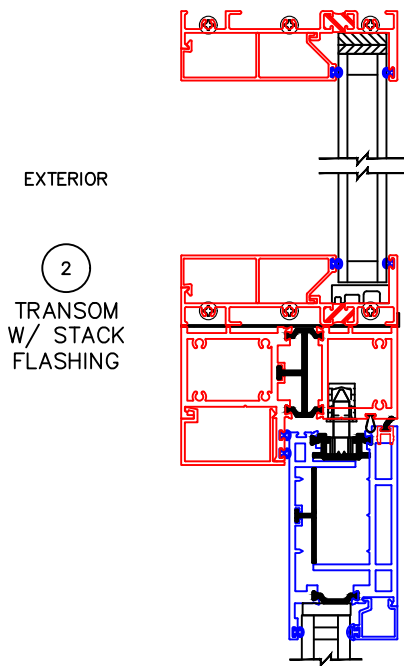
**1**  
 TRANSOM W/ STACK FLASHING  
 SERIES 3800-T/  
 SERIES 1000



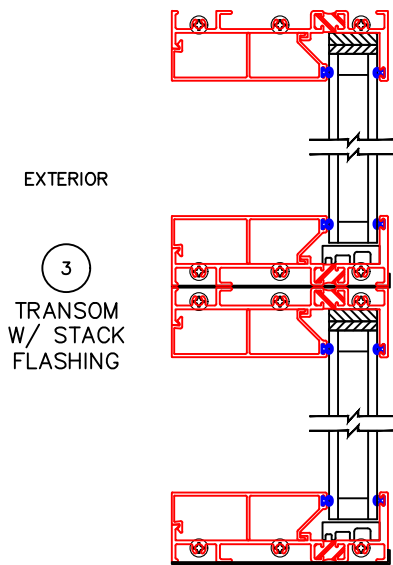
**1A**  
 TRANSOM W/ STACK FLASHING  
 SERIES 3800-T/  
 SERIES 3000



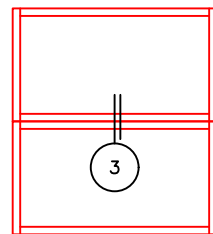
**1B**  
 TRANSOM W/ STACK FLASHING  
 SERIES 3800-T/  
 SERIES 3000-T



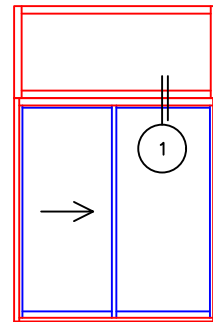
**2**  
 TRANSOM W/ STACK FLASHING  
 SERIES 3800-T/  
 SERIES 3900-T (IN-SWING)



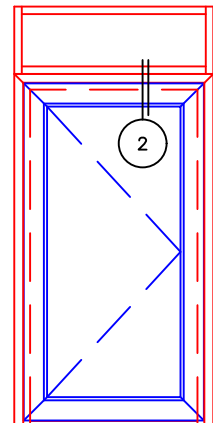
**3**  
 TRANSOM W/ STACK FLASHING  
 SERIES 3800-T/  
 SERIES 3800-T



3800-T STACKED ON 3800-T



3800-T STACKED ON SLIDING DOOR

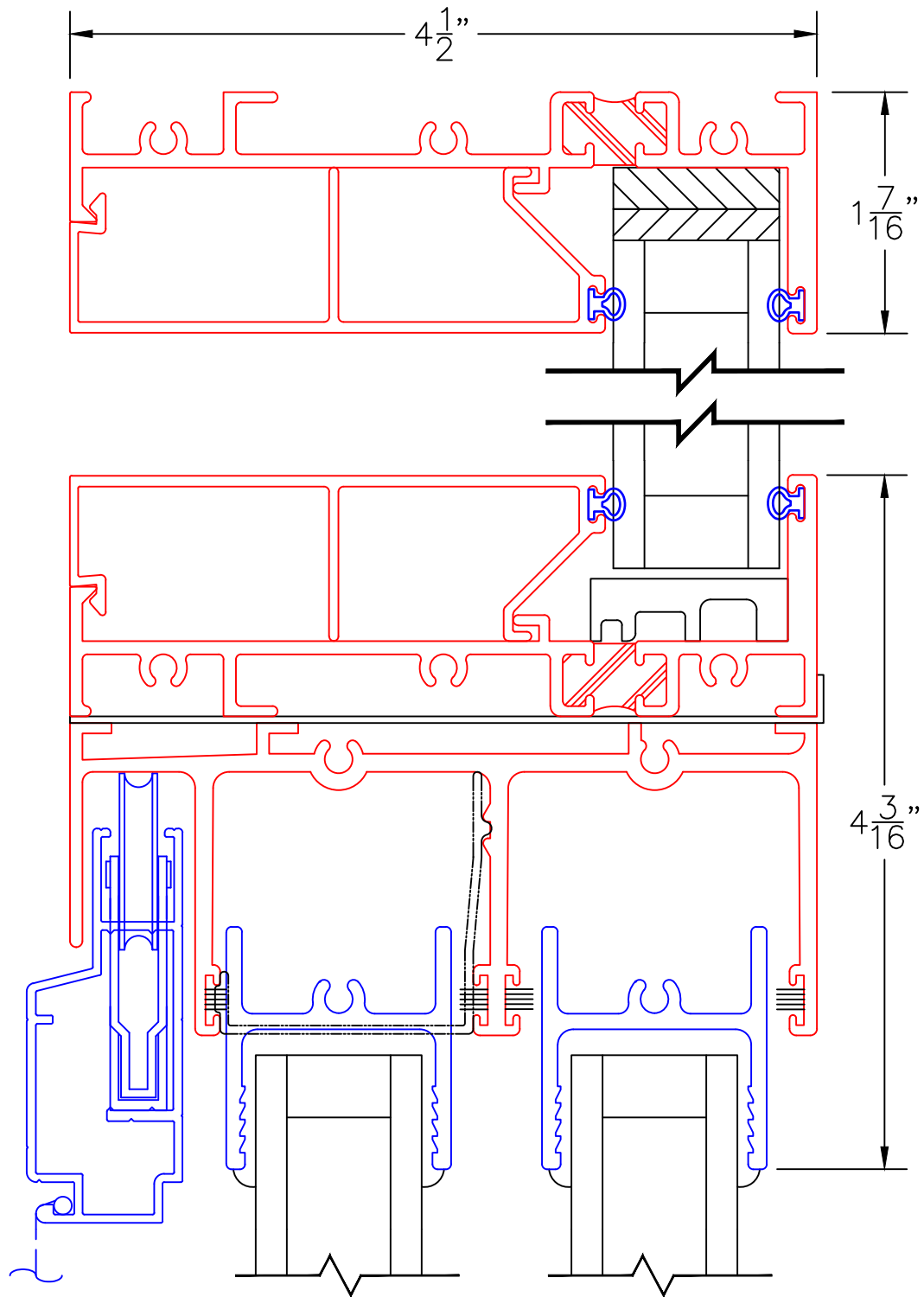


3800-T STACKED ON SWING DOOR

0 0.5 1  
(USE RULER TO SCALE DIMENSIONS IN INCHES)  
**SCALE: FULL**

FIXED WINDOW DETAILS  
1" INSULATED GLAZING

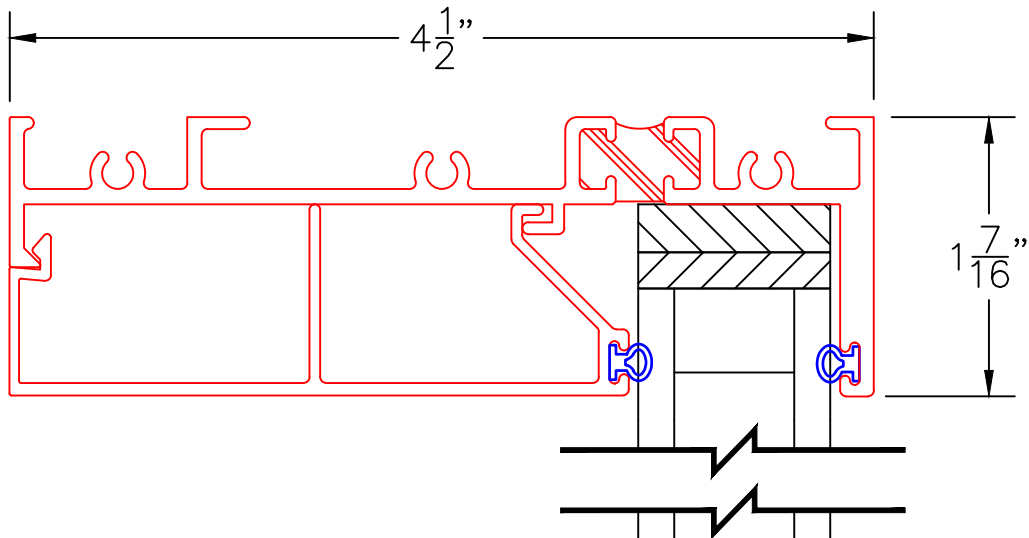
EXTERIOR



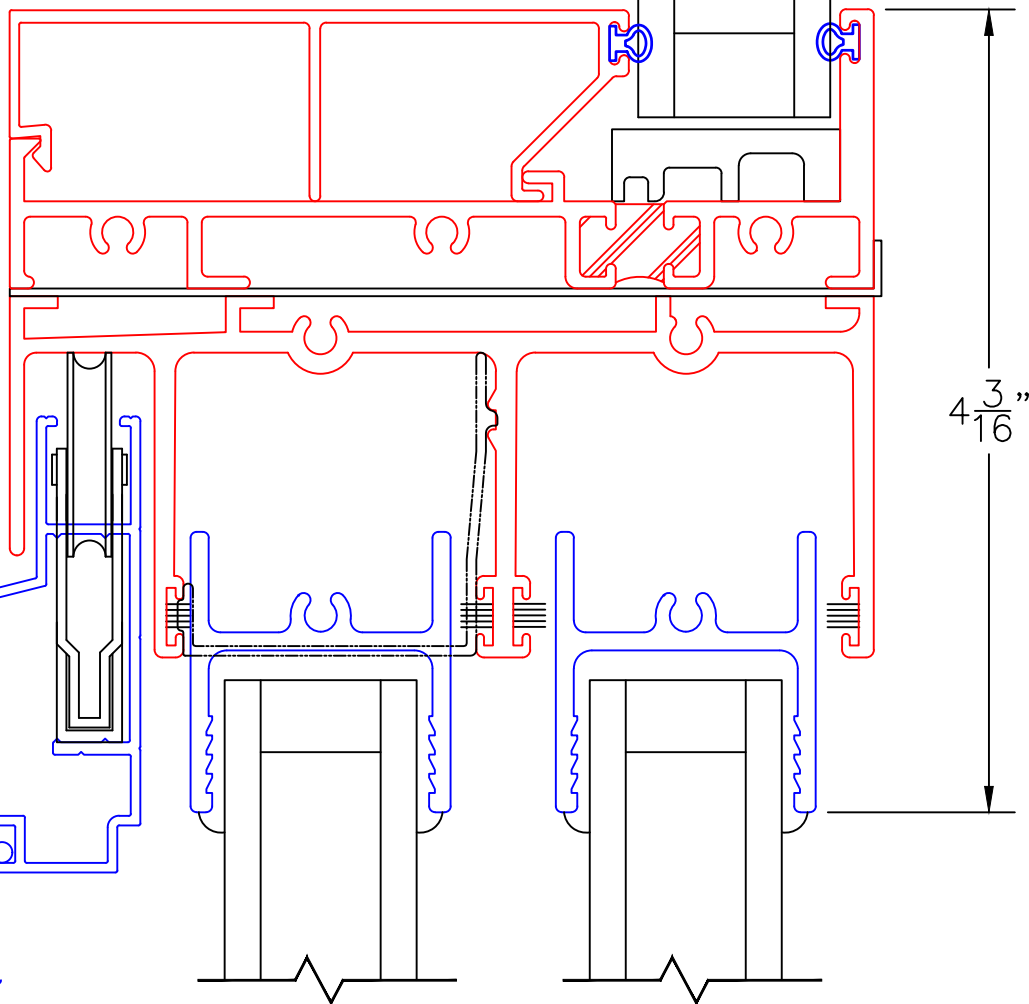
1  
TRANSOM  
W/ STACK  
FLASHING

0 0.5 1  
(USE RULER TO SCALE DIMENSIONS IN INCHES)  
**SCALE: FULL**

**FIXED WINDOW DETAILS**  
**1" INSULATED GLAZING**



EXTERIOR



1A

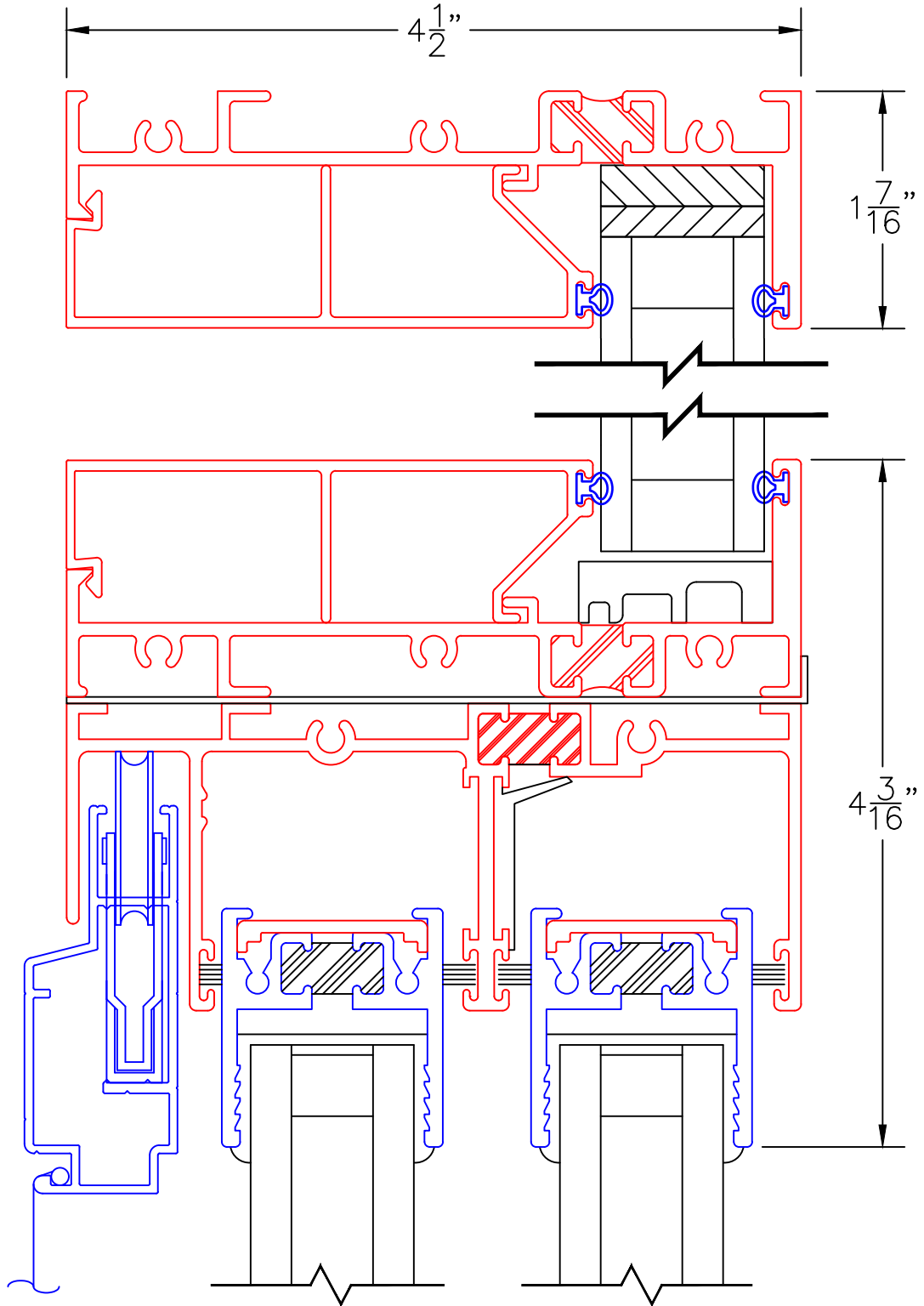
TRANSOM  
W/ STACK  
FLASHING

SERIES 3800-T/SERIES 3000

0 0.5 1  
(USE RULER TO SCALE DIMENSIONS IN INCHES)  
**SCALE: FULL**

**FIXED WINDOW DETAILS**  
**1" INSULATED GLAZING**

EXTERIOR

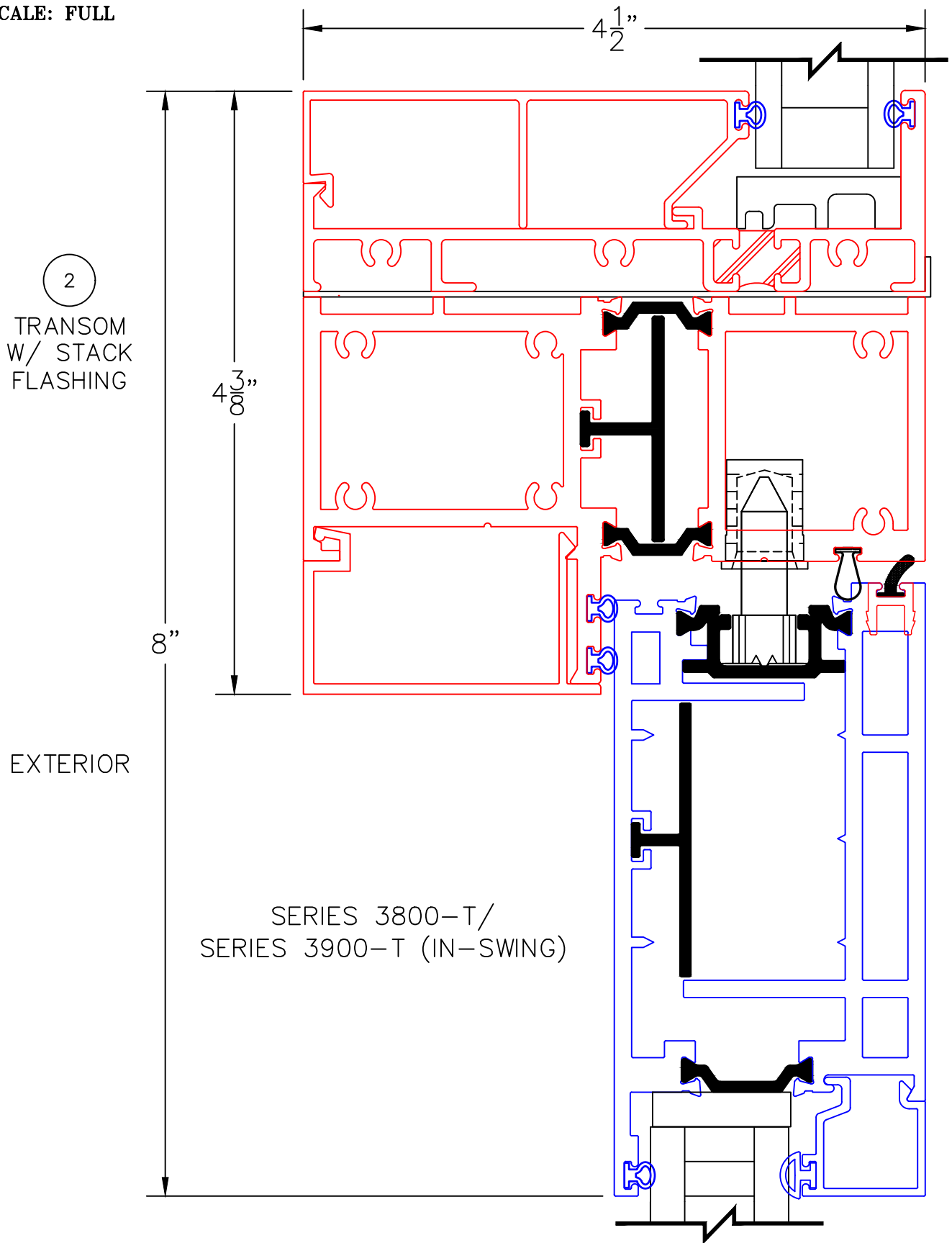


1B  
TRANSOM  
W/ STACK  
FLASHING

SERIES 3800-T/SERIES 3000-T

0 0.5 1  
(USE RULER TO SCALE DIMENSIONS IN INCHES)  
**SCALE: FULL**

**FIXED WINDOW DETAILS**  
**1" INSULATED GLAZING**

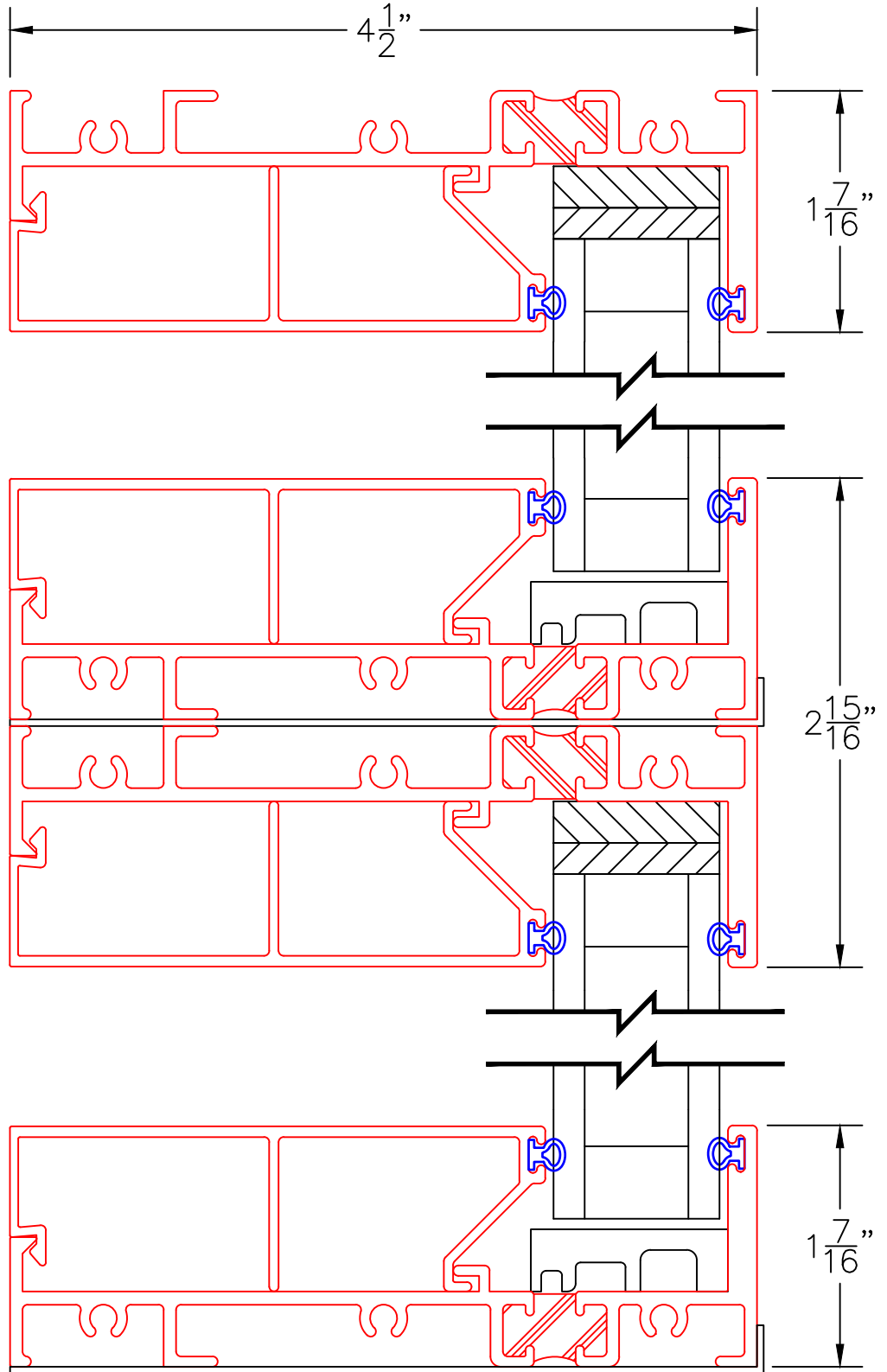


0 0.5 1  
(USE RULER TO SCALE DIMENSIONS IN INCHES)  
**SCALE: FULL**

FIXED WINDOW DETAILS  
1" INSULATED GLAZING

EXTERIOR






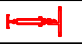

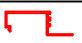

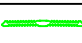

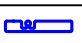
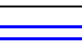




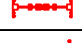




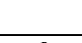



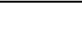


3  
TRANSOM  
W/ STACK  
FLASHING



SERIES 3800-T/SERIES 3800-T

[Architecturals  
Click Here](#)

[Product Specs  
Click Here](#)

BILL OF MATERIALS			
ITEM#	PART#	DESCRIPTION	IMAGE
ALUMINUM EXTRUSIONS			
1	3801	1" GLAZING BEAD	
2	<del>3802</del>	<del>1" BENDABLE GLAZING BEAD</del>	<del></del>
3	<del>3803</del>	<del>1/4" GLAZING BEAD</del>	<del></del>
4	3804	9/16" GLAZING BEAD	
5	3805	4.5 FRAME	
6	3806	TDL	
7	3807	1-1/2" SERIES GLASS STOP	
8	3810	2-1/4" SERIES GLASS STOP	
9	3811	1 1/4" GLASS STOP	
10	3812	INTERSECTING MULLION KEY (INTERSECTING TDL)	
11	3814	APPLIED GRID INTERIOR	
12	3815	SHEAR BLOCK (FOR HP ONLY)	
13	FW1194	2.0" x 0.25" ALUMINUM BAR (INTERSECTING TDL HP ONLY)	
14	FW1195	1.5" x 0.25" ALUMINUM BAR (INTERSECTING TDL HP ONLY)	
15		SILL PAN, BLOCK FRAME	
16		SILL PAN, NAIL ON	
17	3082	THERMAL MULLION	
18	3809	4.5 BLOCK FRAME	
19	<del>3816</del>	<del>1 1/4" TIERED GLASS STOP</del>	<del></del>
20	3817	90° CORNER BUTT GLAZED EXTERIOR CAP/COVER FOR 1.25" GLASS	
21	3818	90° CORNER BUTT GLAZED INTERIOR CAP/COVER FOR 1.25" GLASS	
HARDWARE			
31	VARY BY COLOR	SCREW NO 10, PPH, 1.00"	
32	VARY BY COLOR	SCREW NO 6, PFHU, .50"	
33	VARY BY COLOR	SCREW NO 8, PFH, 1 1/2"	
SEAL & SEALANT			
51	25199	BULB VINYL - MINI (ASTM C864)	
52	25031	BULB VINYL - LARGE (ASTM C864)	
53	19120	Q-LON WEATHERSTRIP (U 5212)	
54	18622	SETTING BLOCK 3/8 X 1 X 4	
55	18621	SETTING BLOCK 1/8 X 1 X 4	
56	23217	RIGID PVC SETTING BLOCK	