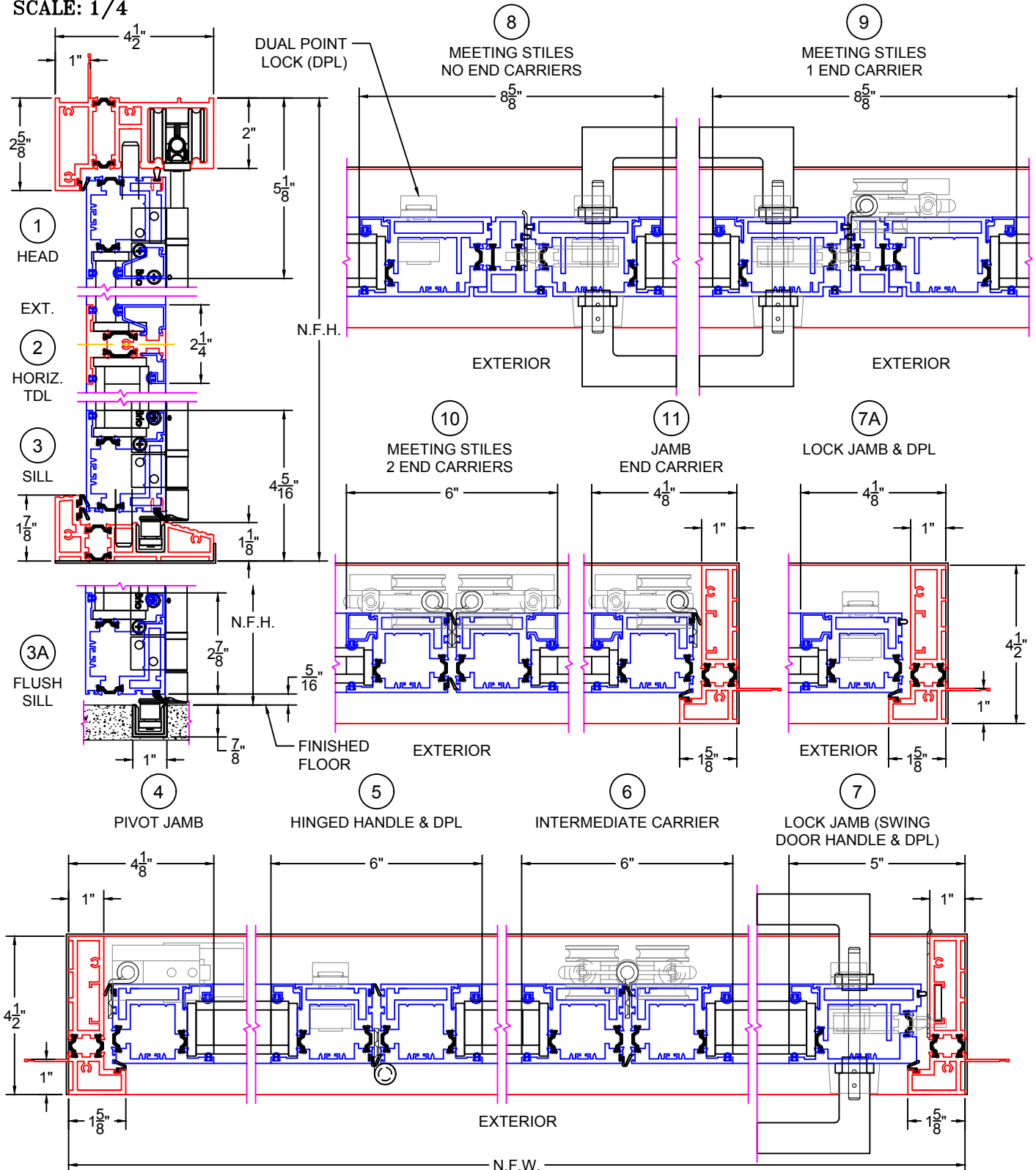


(USE RULER TO SCALE DIMENSIONS IN INCHES)

SCALE: 1/4

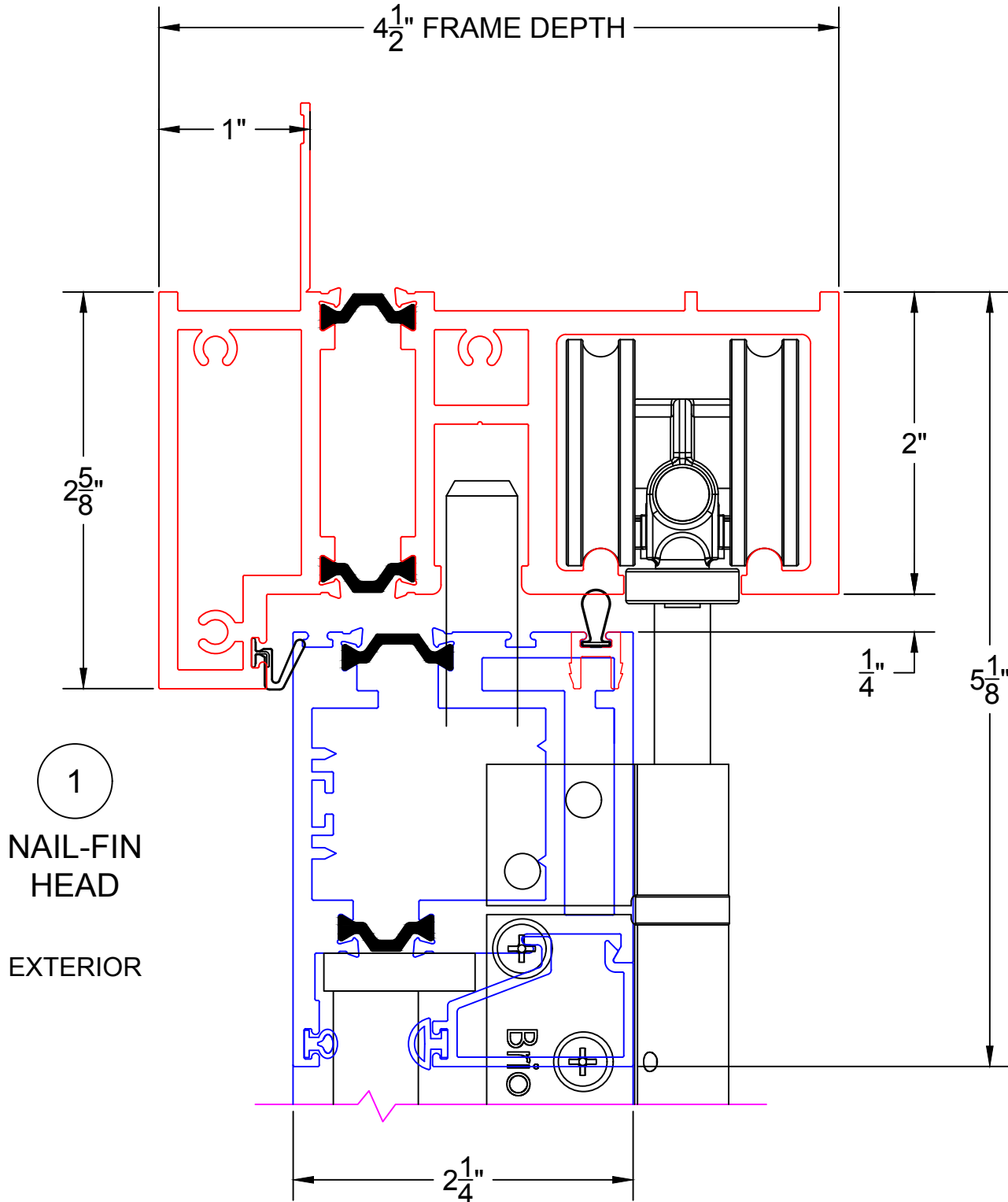
**FOLDING IN-SWING DOOR DETAILS**  
1" & 1-1/2" INSULATED & 9/16" SINGLE  
GLAZING SHOWN



- REFERENCE PAGE 3600-T-003 FOR ELEVATIONS (SIMILAR).
- NAIL-FIN FRAME SHOWN, BLOCK FRAME AVAILABLE.
- GLASS PENETRATION = 1/2"
- EXTERIOR RATED PRODUCTS HAVE WEEP SLOTS ON HORIZONTAL SILLS.
- MEETING STILES WITH NO END CARRIERS: ACTIVE RIGHT SHOWN.

0 0.5 1  
(USE RULER TO SCALE DIMENSIONS IN INCHES)  
**SCALE: FULL**

**FOLDING IN-SWING DOOR DETAILS**  
**9/16" SINGLE GLAZING SHOWN**



1

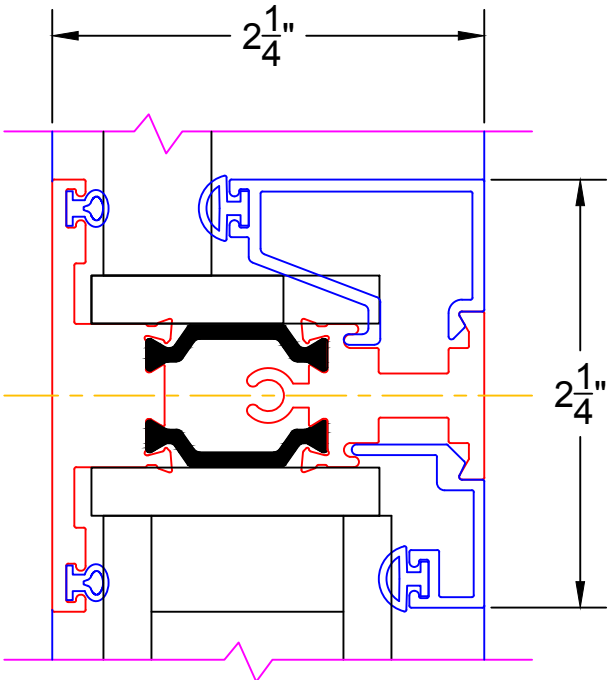
**NAIL-FIN  
HEAD**

**EXTERIOR**

0 0.5 1  
(USE RULER TO SCALE DIMENSIONS IN INCHES)  
**SCALE: FULL**

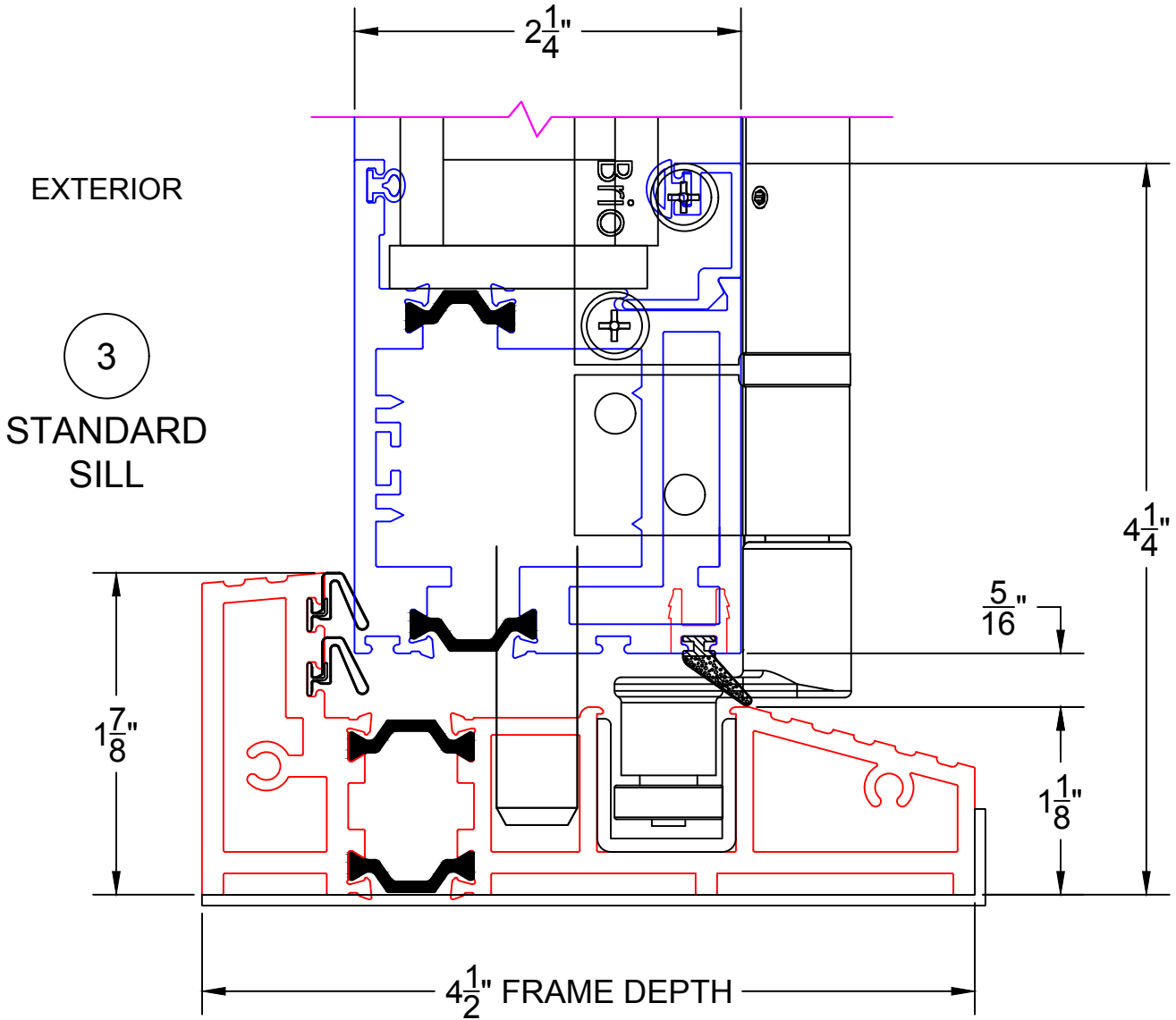
**FOLDING IN-SWING DOOR DETAILS**  
**1-1/2" INSULATED AND 9/16" SINGLE**  
**GLAZING SHOWN**

2  
HORIZONTAL  
TDL BAR  
  
EXTERIOR



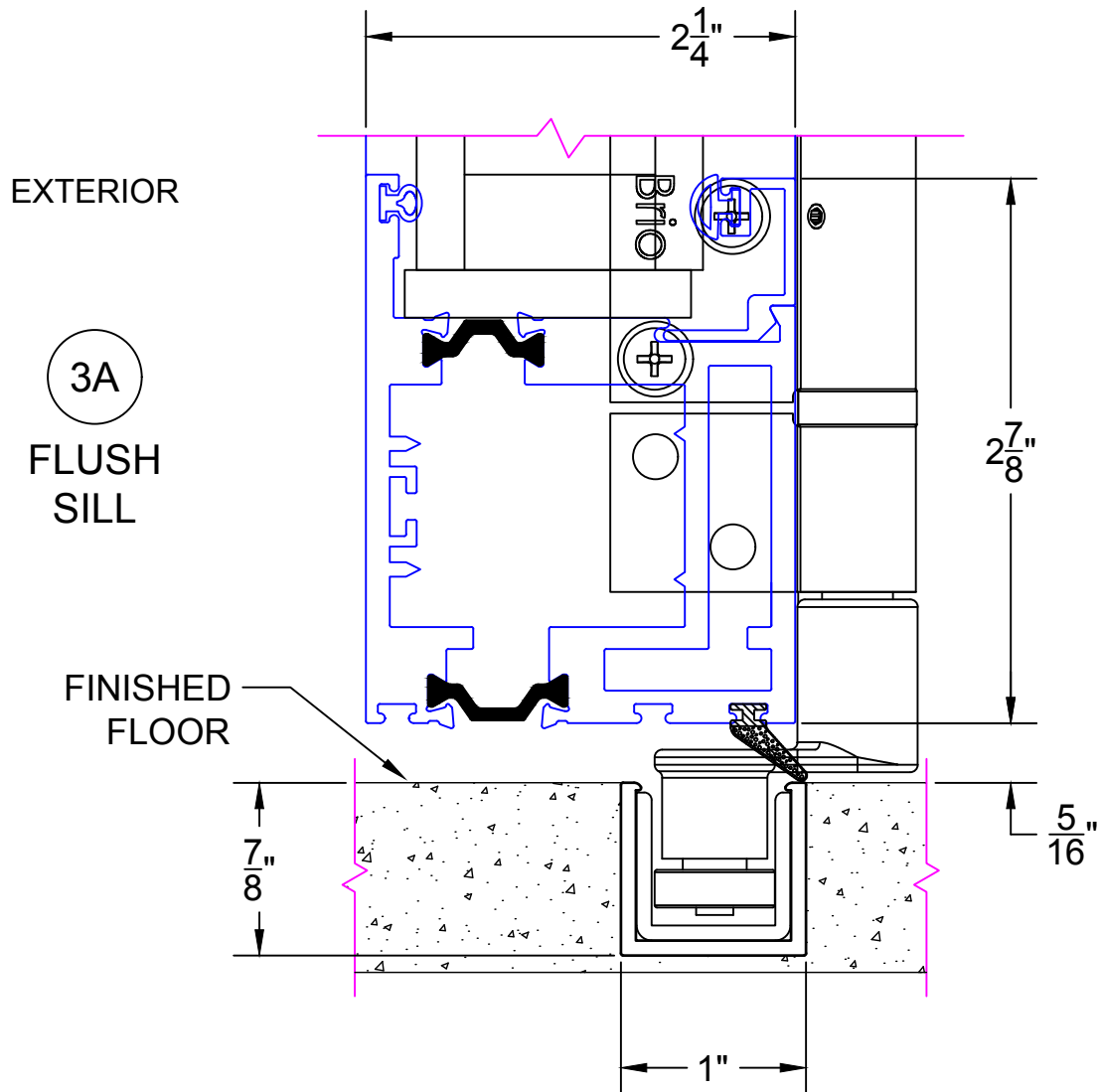
0 0.5 1  
(USE RULER TO SCALE DIMENSIONS IN INCHES)  
**SCALE: FULL**

**FOLDING IN-SWING DOOR DETAILS**  
**1-1/2" INSULATED GLAZING SHOWN**



0 0.5 1  
(USE RULER TO SCALE DIMENSIONS IN INCHES)  
**SCALE: FULL**

**FOLDING IN-SWING DOOR DETAILS**  
**1-1/2" INSULATED GLAZING SHOWN**

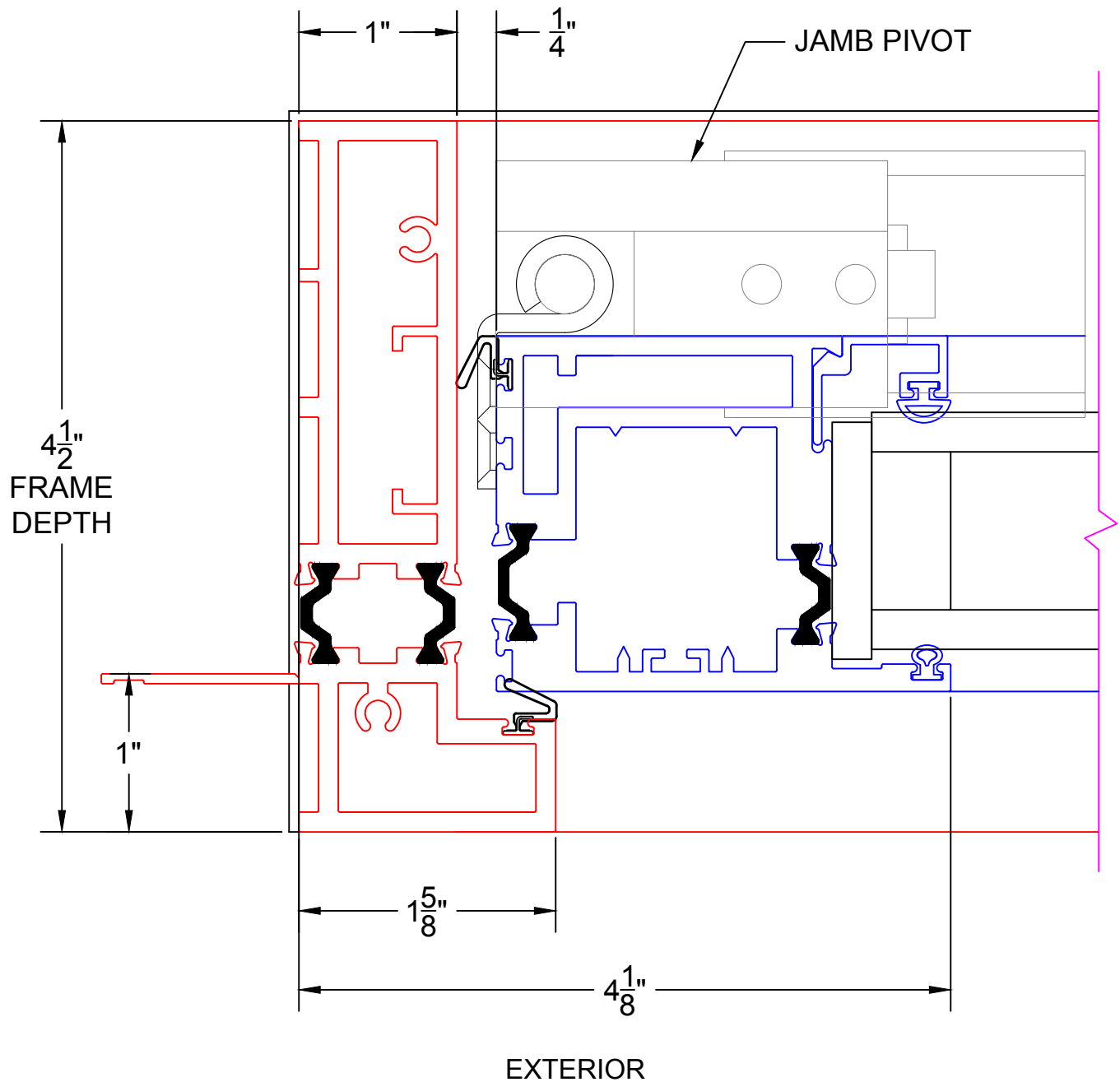


0 0.5 1  
(USE RULER TO SCALE DIMENSIONS IN INCHES)  
**SCALE: FULL**

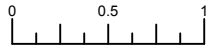
**FOLDING IN-SWING DOOR DETAILS**  
**1-1/2" INSULATED GLAZING SHOWN**

4

**PIVOT  
JAMB**



FOLDING IN-SWING DOOR DETAILS  
1-1/2" INSULATED GLAZING SHOWN



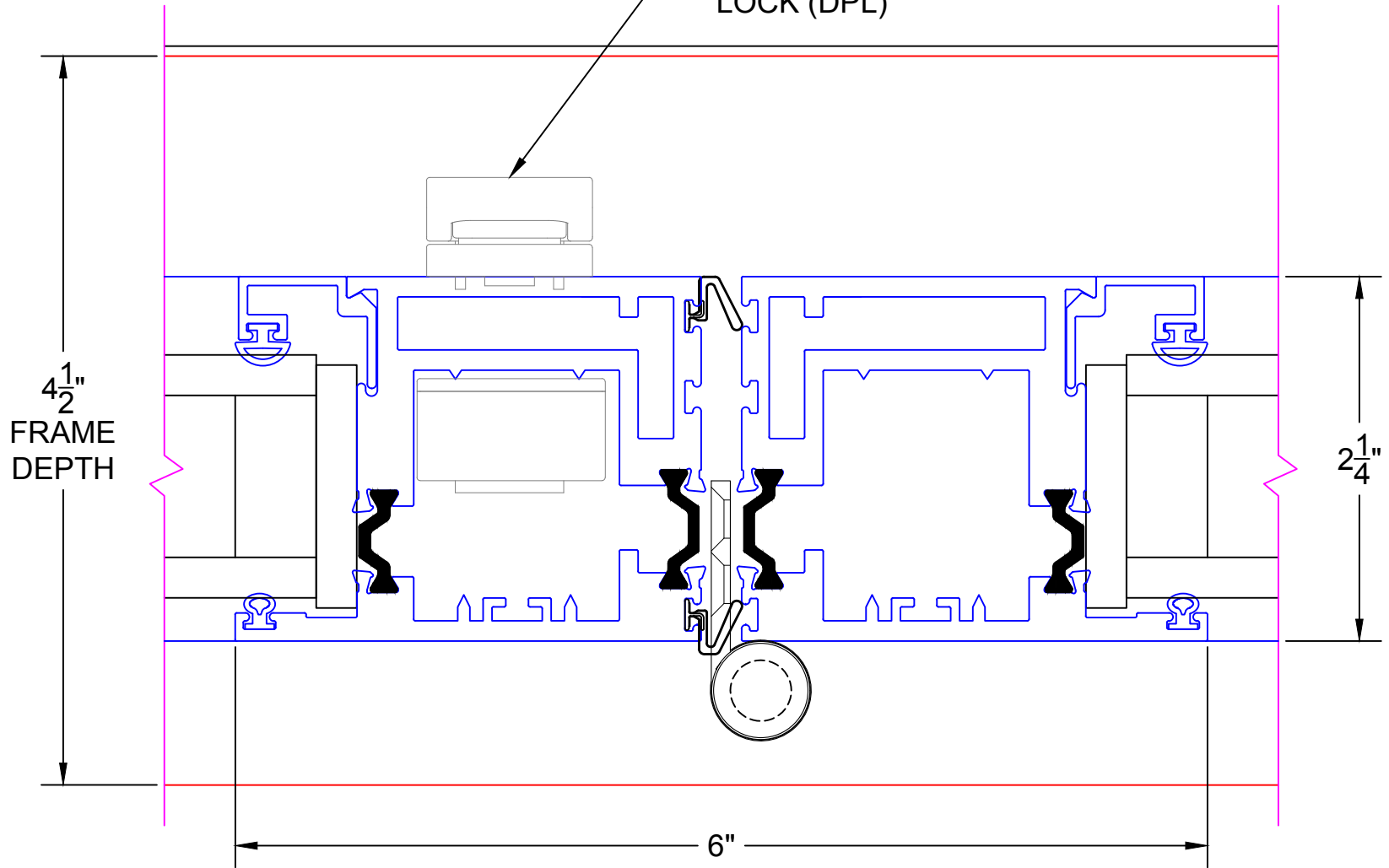
(USE RULER TO SCALE DIMENSIONS IN INCHES)

SCALE: FULL

5

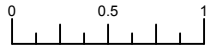
HINGED HANDLE & DPL

DUAL POINT  
LOCK (DPL)



EXTERIOR

FOLDING IN-SWING DOOR DETAILS  
1-1/2" INSULATED GLAZING SHOWN



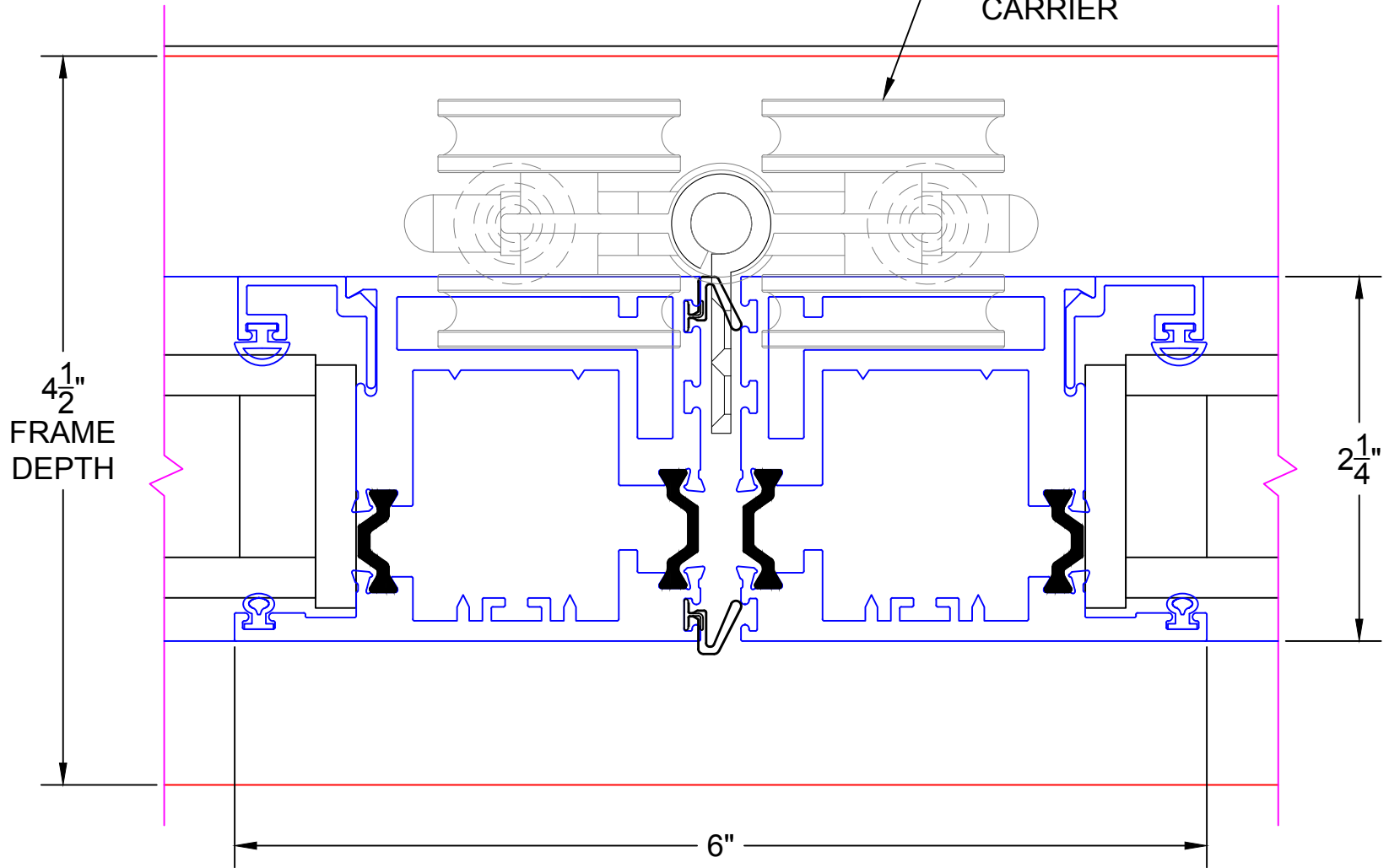
(USE RULER TO SCALE DIMENSIONS IN INCHES)

SCALE: FULL

6

INTERMEDIATE CARRIER

INTERMEDIATE  
CARRIER



EXTERIOR

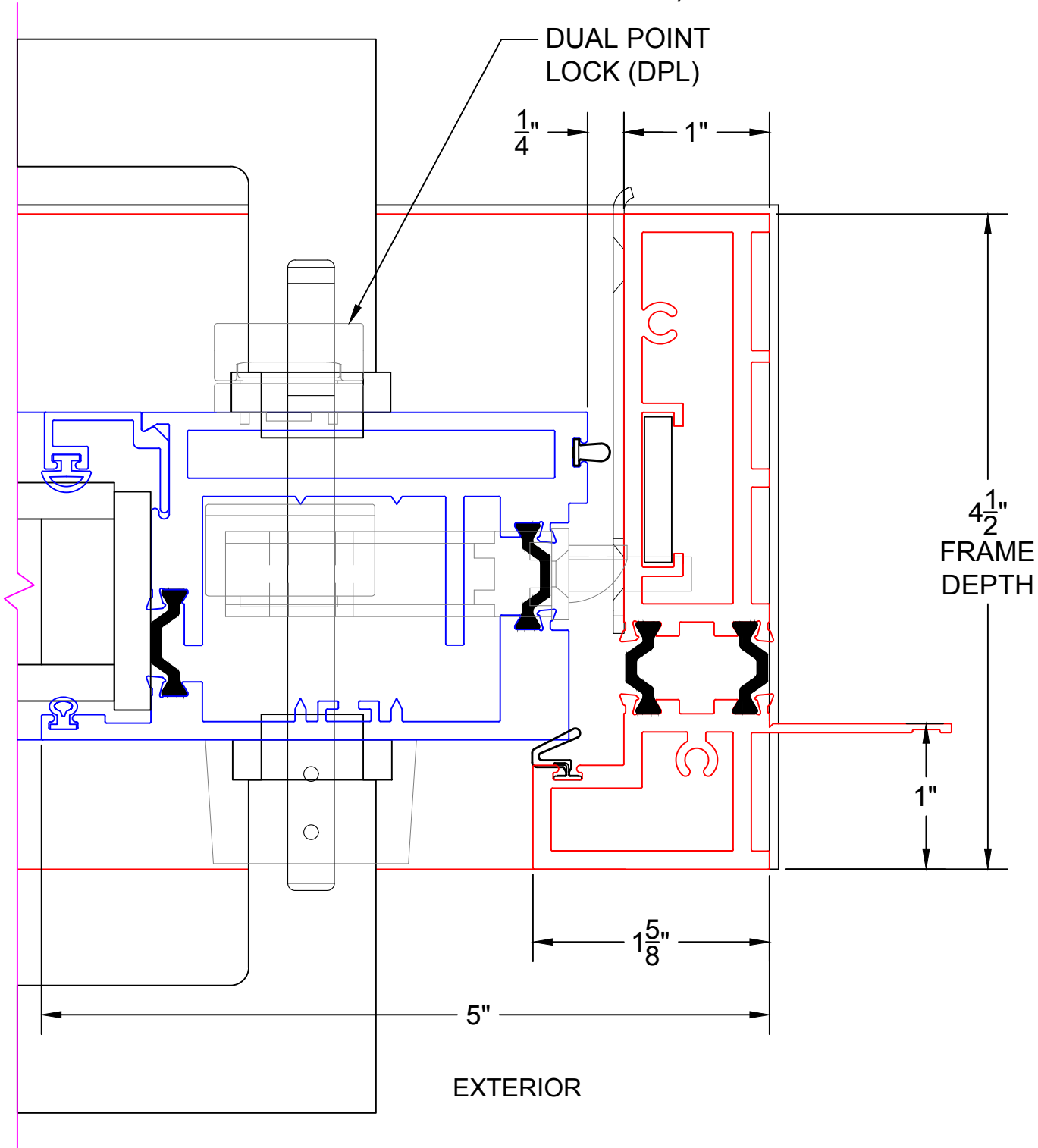


0 0.5 1  
(USE RULER TO SCALE DIMENSIONS IN INCHES)  
**SCALE: FULL**

**FOLDING IN-SWING DOOR DETAILS**  
**1-1/2" INSULATED GLAZING SHOWN**

7

**LOCK JAMB (SWING DOOR HANDLE & DPL)**

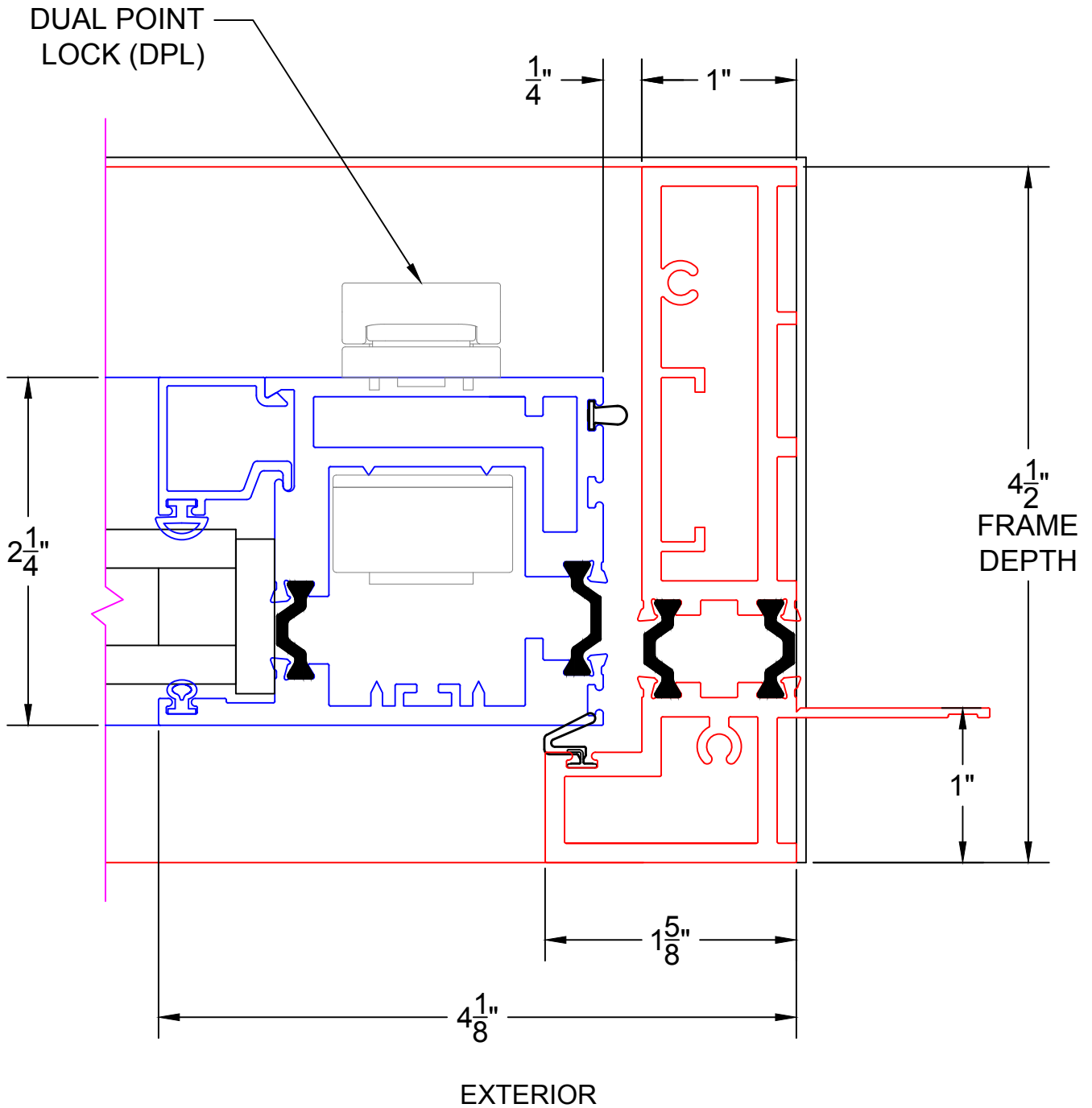


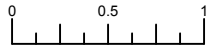
0 0.5 1  
(USE RULER TO SCALE DIMENSIONS IN INCHES)  
**SCALE: FULL**

**FOLDING IN-SWING DOOR DETAILS**  
**1" INSULATED GLAZING SHOWN**

7A

**LOCK JAMB & DPL**





(USE RULER TO SCALE DIMENSIONS IN INCHES)

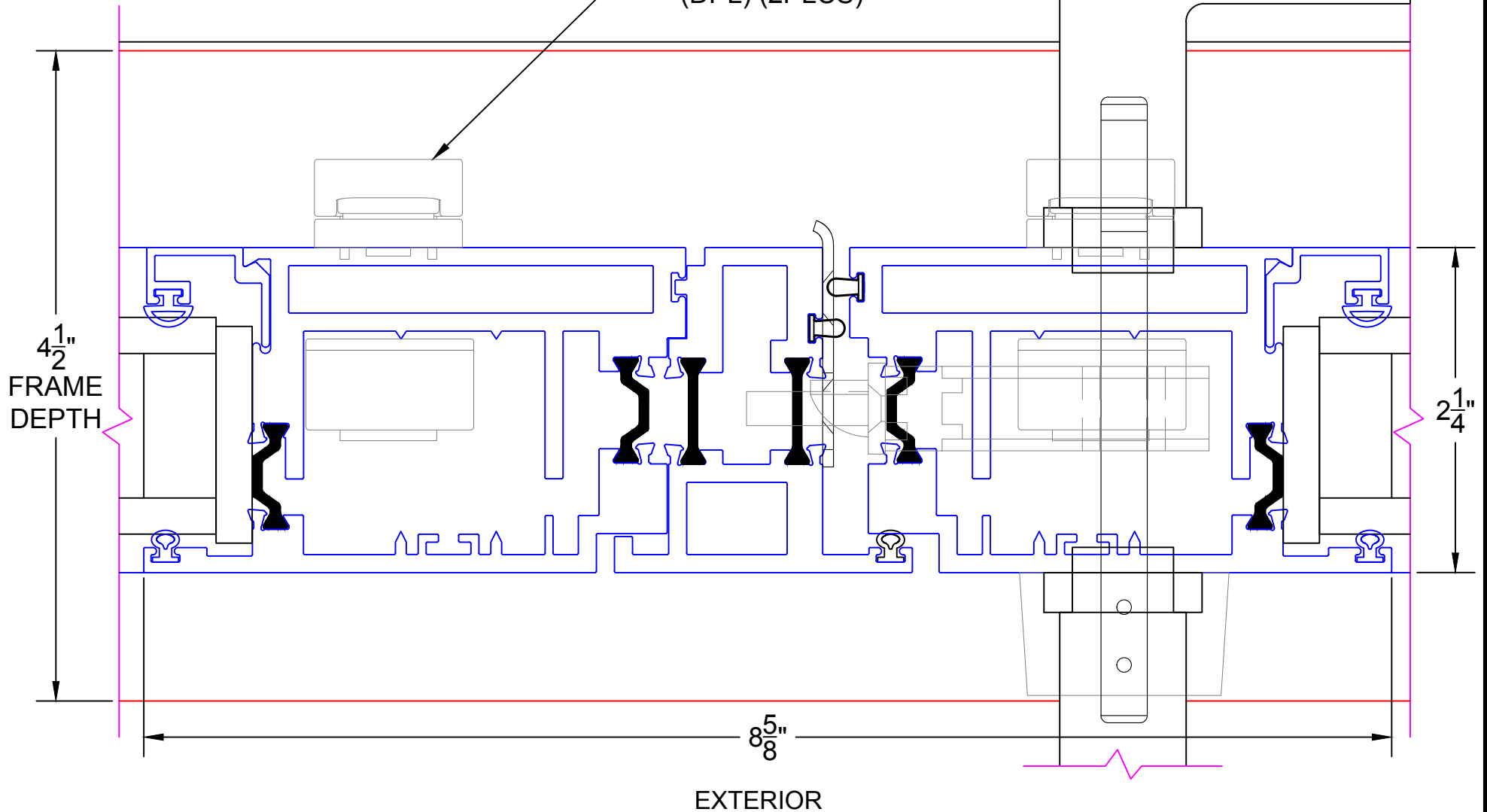
SCALE: FULL

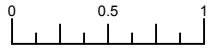
8

## FOLDING IN-SWING DOOR DETAILS 1-1/2" INSULATED GLAZING SHOWN

MEETING STILES  
NO END CARRIERS

DUAL POINT LOCK  
(DPL) (2PLCS)



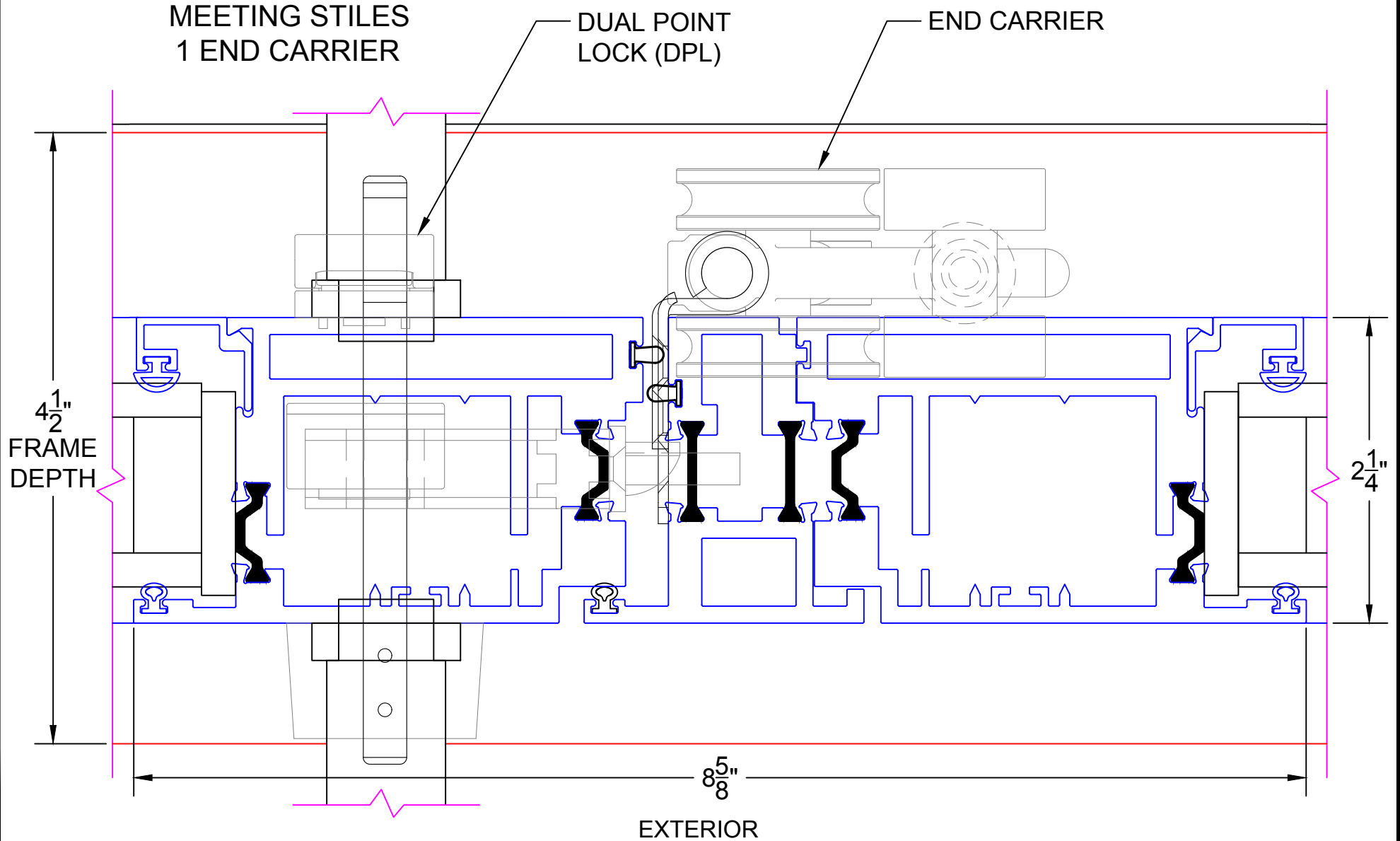


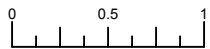
(USE RULER TO SCALE DIMENSIONS IN INCHES)

SCALE: FULL

9

## FOLDING IN-SWING DOOR DETAILS 1-1/2" INSULATED GLAZING SHOWN





(USE RULER TO SCALE DIMENSIONS IN INCHES)

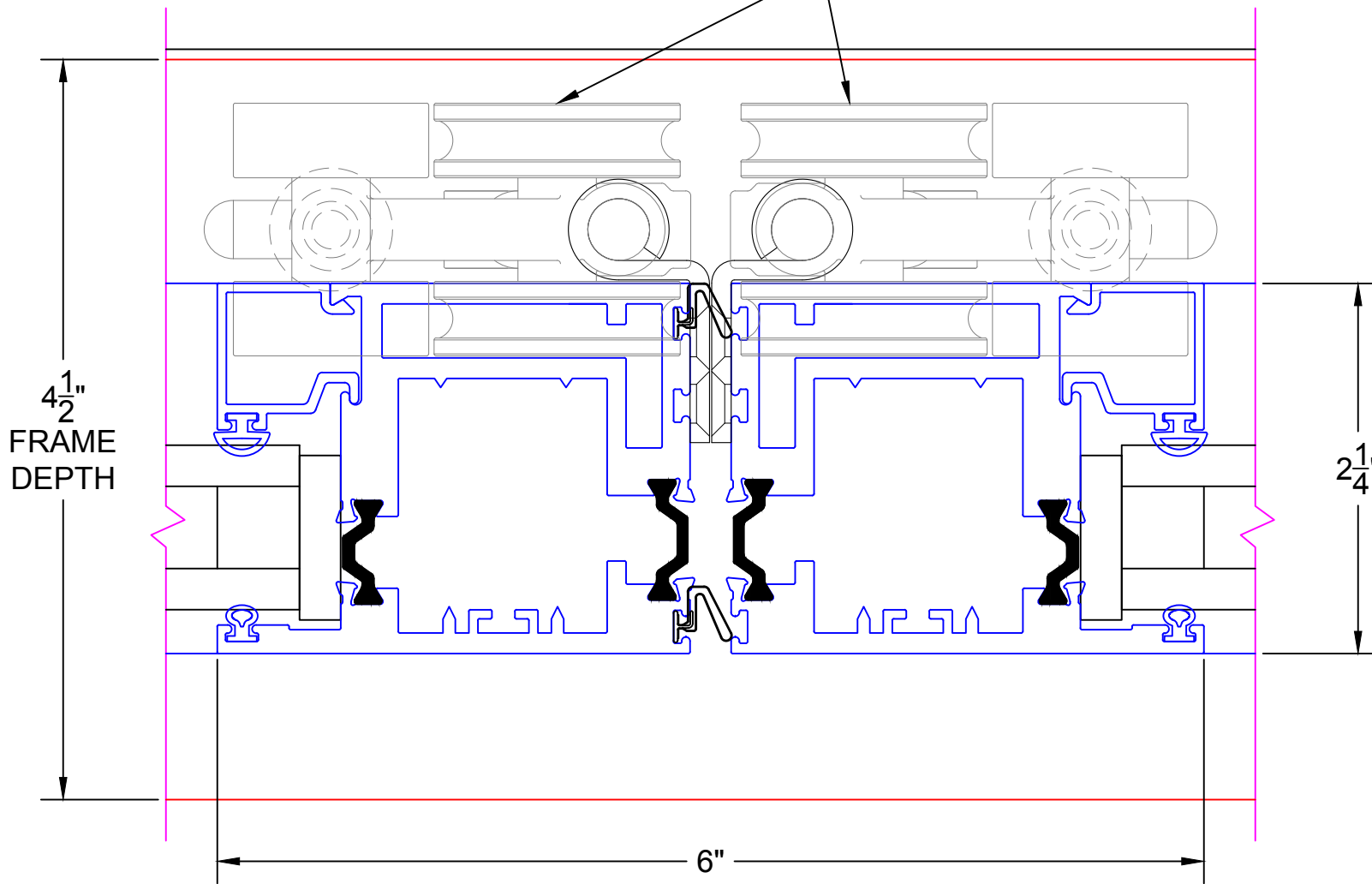
SCALE: FULL

10

## FOLDING IN-SWING DOOR DETAILS 1" INSULATED GLAZING SHOWN

MEETING STILES  
2 END CARRIERS

END CARRIER



EXTERIOR

0 0.5 1  
(USE RULER TO SCALE DIMENSIONS IN INCHES)  
**SCALE: FULL**

**FOLDING IN-SWING DOOR DETAILS**  
**1" INSULATED GLAZING SHOWN**

11

**JAMB**  
**END CARRIER**

