

(USE RULER TO SCALE DIMENSIONS IN INCHES)
SCALE: 1/4

MULTI-SLIDE INSIDE CORNER DOOR DETAILS

ARCHETYPE LATCH WITH FLUSH PULL HANDLES

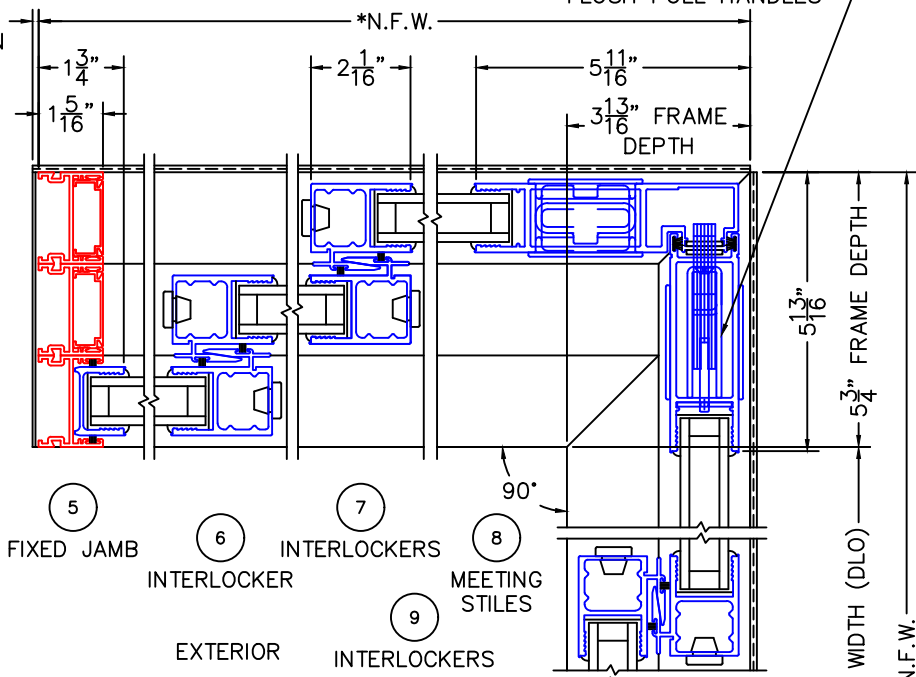
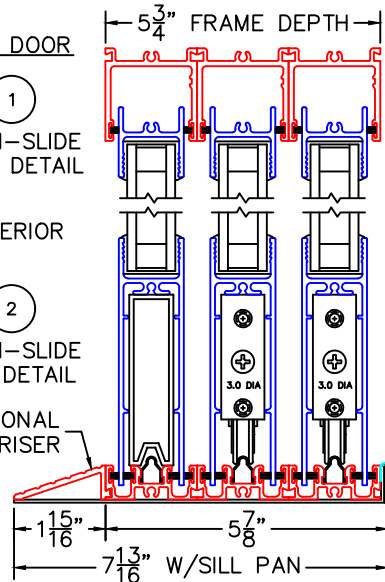
OXX DOOR

1
MULTI-SLIDE HEAD DETAIL

EXTERIOR

2
MULTI-SLIDE SILL DETAIL

OPTIONAL SILL RISER



XXP DOOR

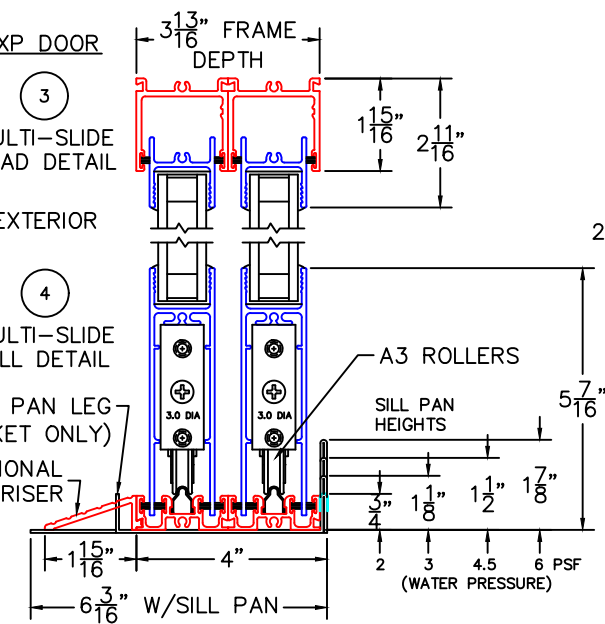
3
MULTI-SLIDE HEAD DETAIL

EXTERIOR

4
MULTI-SLIDE SILL DETAIL

SILL PAN LEG (POCKET ONLY)

OPTIONAL SILL RISER

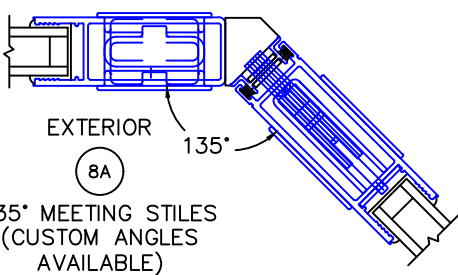
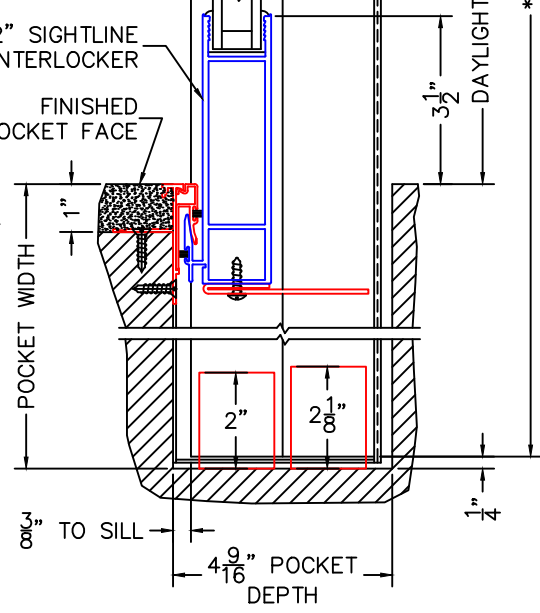


3-1/2" SIGHTLINE INTERLOCKER

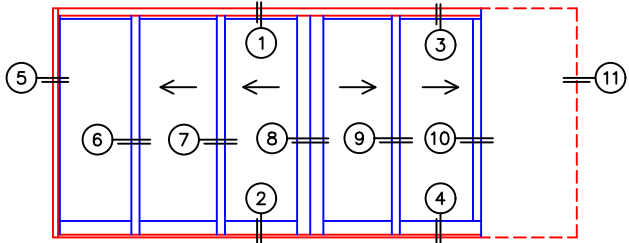
FINISHED POCKET FACE

10
2-PIECE POCKET INTERLOCKERS

11
POCKET JAMB



NOTE: CENTERLINES ARE NOT DIVIDED EQUALLY; CONFIRM CENTERLINES WHEN REQUIRED.



OXX^XXP DOOR

- *NET FRAME WIDTH DOES NOT INCLUDE SILL PAN.
- SILL PAN EXTENDS 1/8" BEYOND EACH JAMB.
- PLAN VIEW DOES NOT SHOW SILL RISER.
- FOR ADDITIONAL OPTIONS AND UPGRADES SEE DRAWINGS 3070-07, 3070-08 & 3070-11.

- GLASS PENETRATION: 11/16"
- EXTERIOR RATED PRODUCTS HAVE WEEP SLOTS ON HORIZONTAL SILLS.