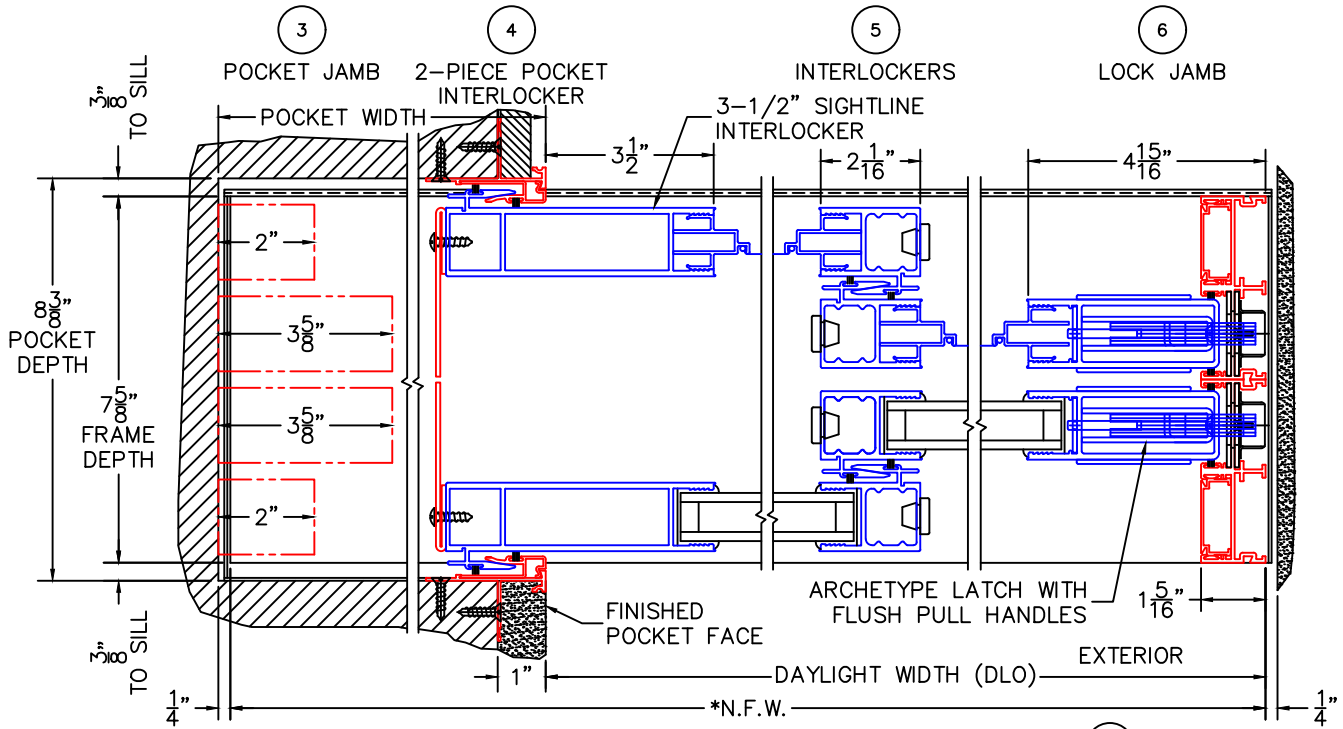
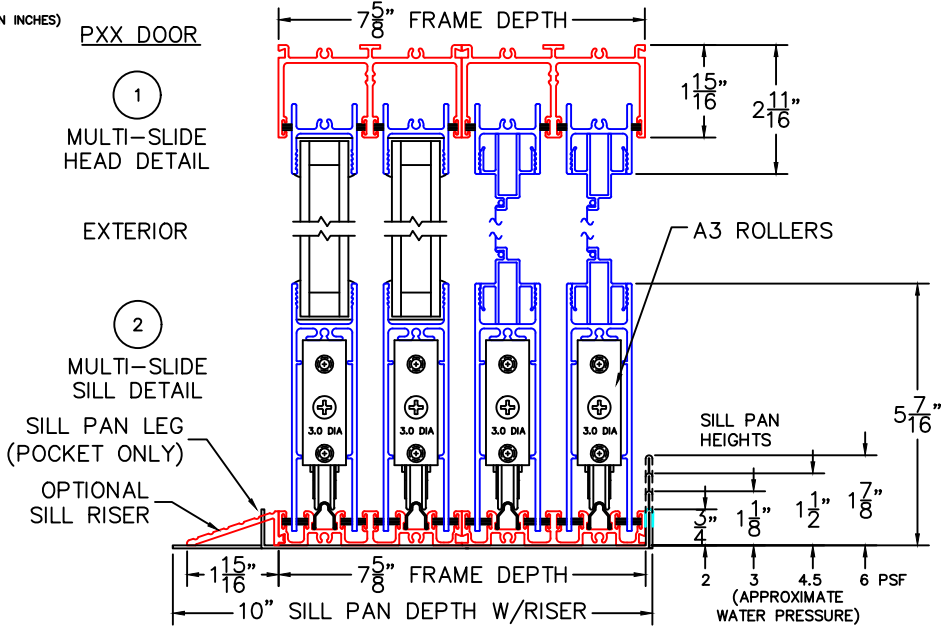
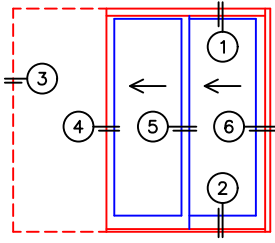


(USE RULER TO SCALE DIMENSIONS IN INCHES)
SCALE: 1/4

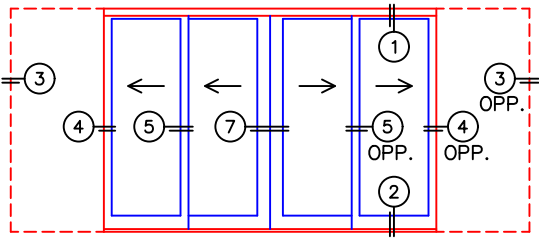
MULTI-SLIDE POCKET DOOR DETAILS WITH SCREENS



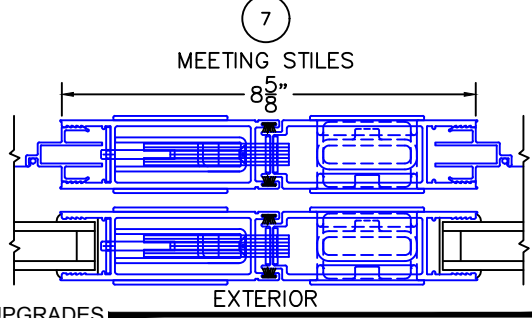
NOTE: CENTERLINES ARE NOT DIVIDED EQUALLY; CONFIRM CENTERLINES WHEN REQUIRED.



PXX DOOR



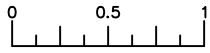
PXXIXP DOOR



MEETING STILES

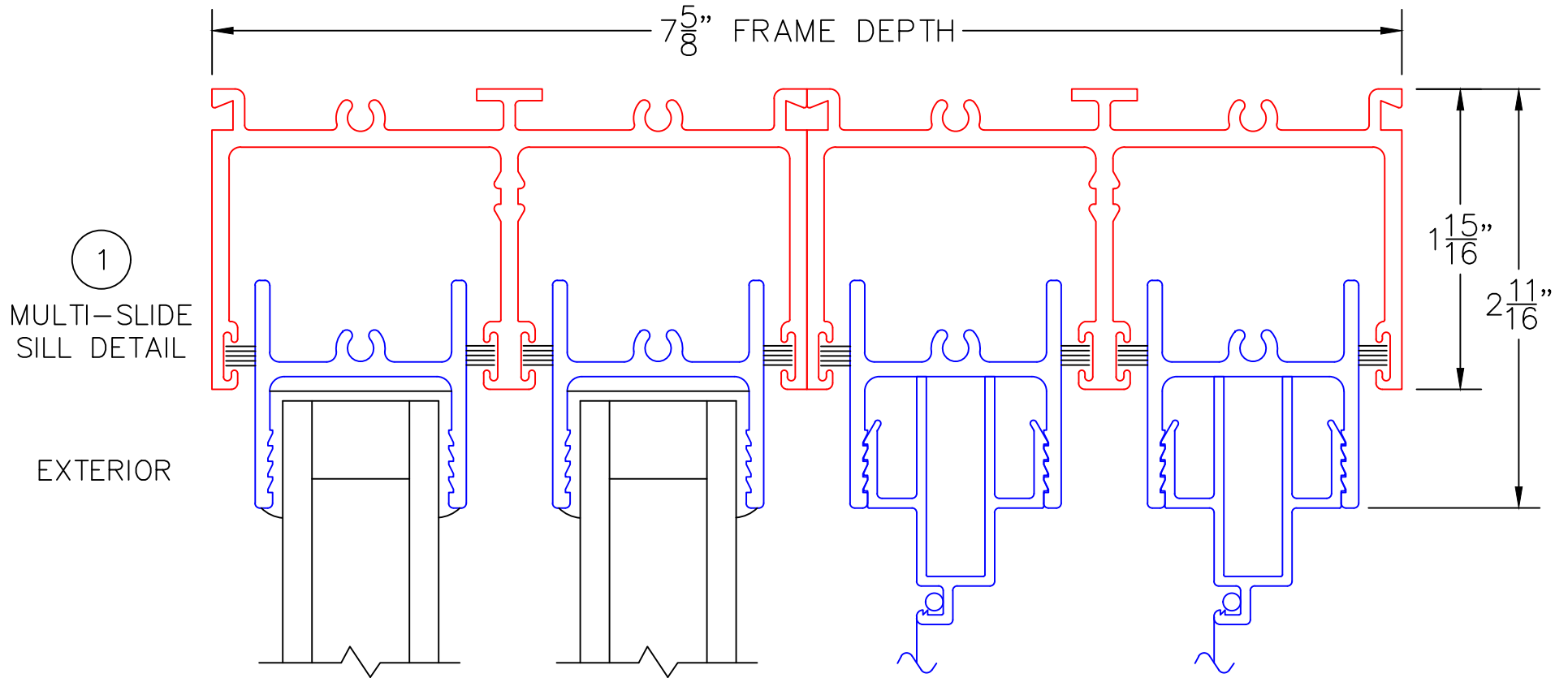
- GLASS PENETRATION: 11/16"
- *NET FRAME WIDTH DOES NOT INCLUDE SILL PAN. SEE DRAWINGS 3070-07, 3070-08 & 3070-11.
- SILL PAN EXTENDS 1/8" BEYOND EACH JAMB.
- PLAN VIEW DOES NOT SHOW SILL RISER.
- FOR ADDITIONAL OPTIONS AND UPGRADES
- EXTERIOR RATED PRODUCTS HAVE WEEP SLOTS ON HORIZONTAL SILLS.

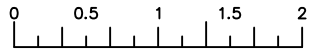
PXX DOOR



(USE RULER TO SCALE DIMENSIONS IN INCHES)

SCALE: FULL

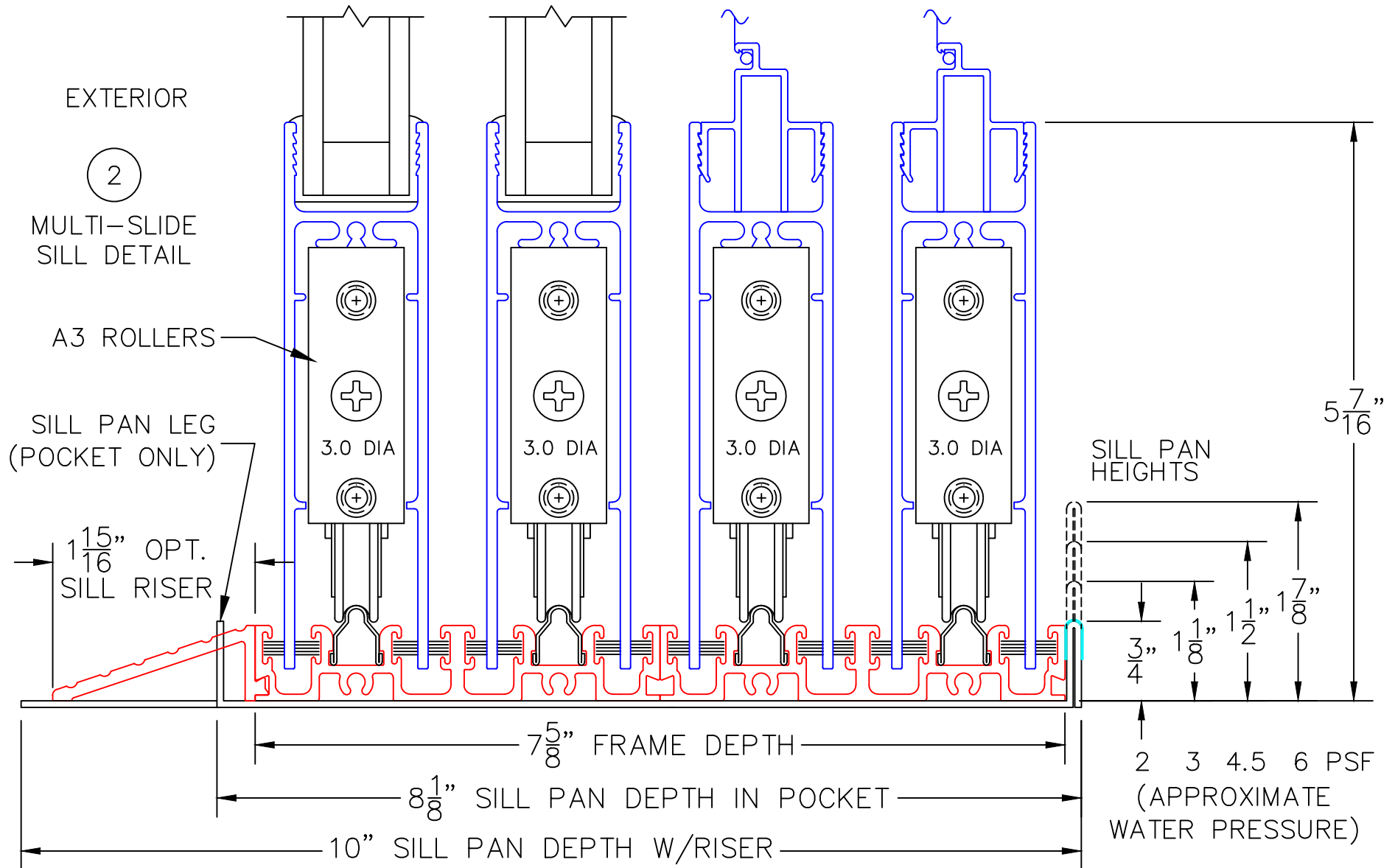


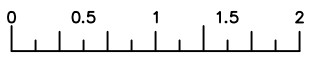


(USE RULER TO SCALE DIMENSIONS IN INCHES)

SCALE: 3/4

PXX DOOR





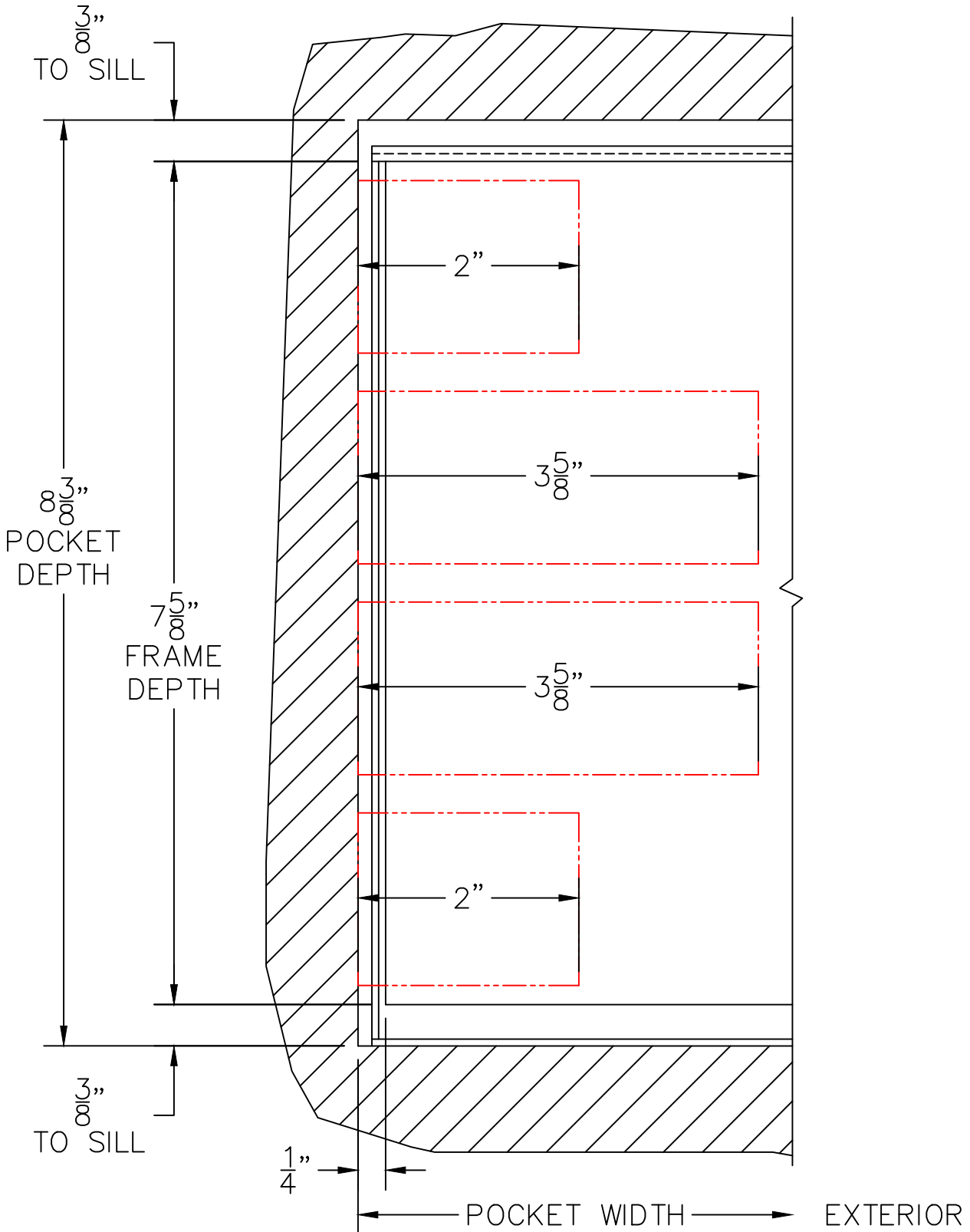
(USE RULER TO SCALE DIMENSIONS IN INCHES)

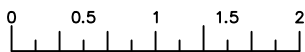
SCALE: 3/4

PXX DOOR

3

POCKET JAMB





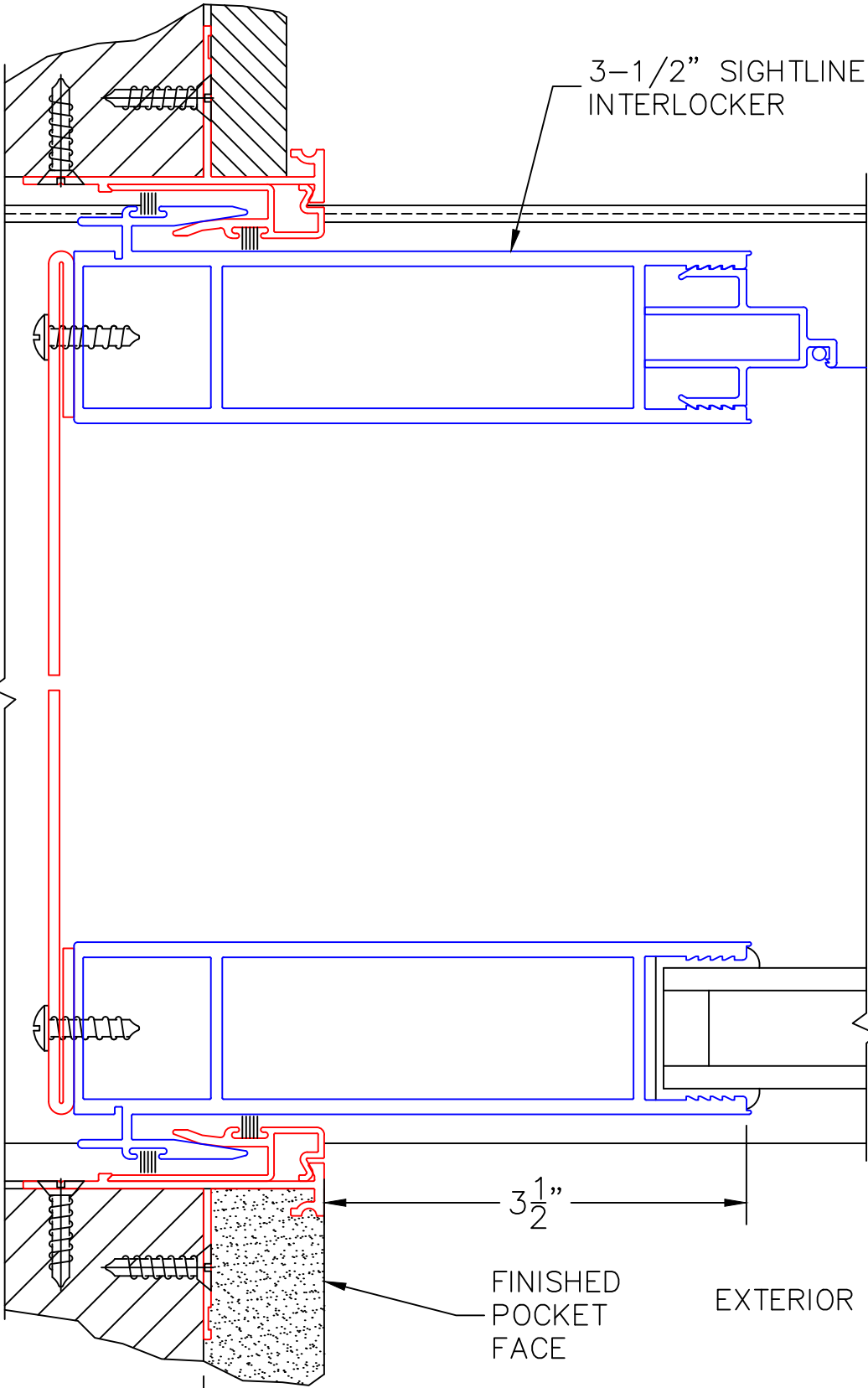
(USE RULER TO SCALE DIMENSIONS IN INCHES)

SCALE: 3/4

PXX DOOR

3-1/2" SIGHTLINE INTERLOCKER

4
2-PIECE
POCKET
INTERLOCKER



3 1/2"

FINISHED
POCKET
FACE

EXTERIOR

1"

POCKET WIDTH

DAYLIGHT WIDTH (DLO)

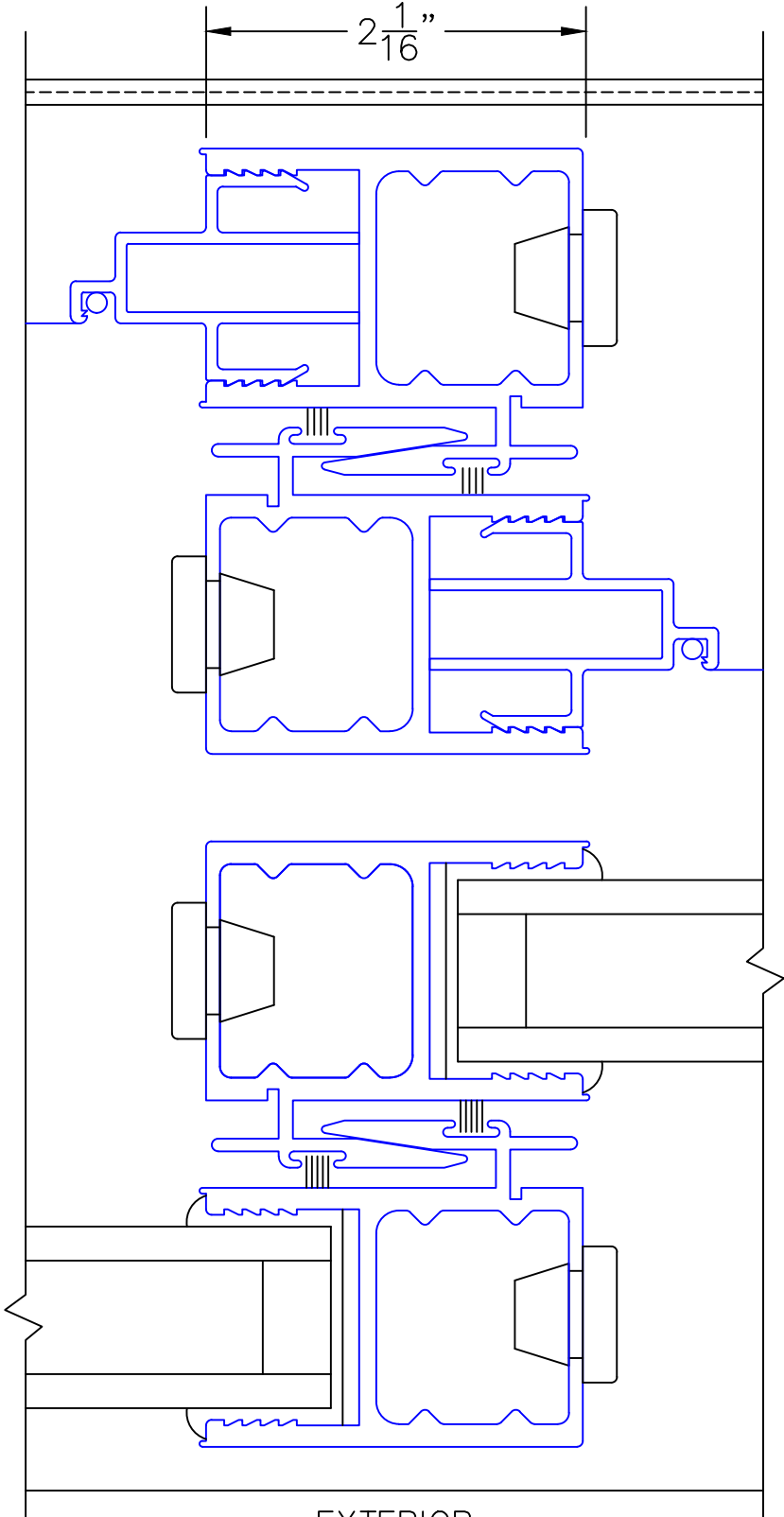
0 0.5 1
(USE RULER TO SCALE DIMENSIONS IN INCHES)
SCALE: FULL

PXX DOOR

5

INTERLOCKERS

2 1/16"



EXTERIOR

0 0.5 1
(USE RULER TO SCALE DIMENSIONS IN INCHES)
SCALE: FULL

6

PXX DOOR

LOCK JAMB

4 ¹⁵/₁₆"

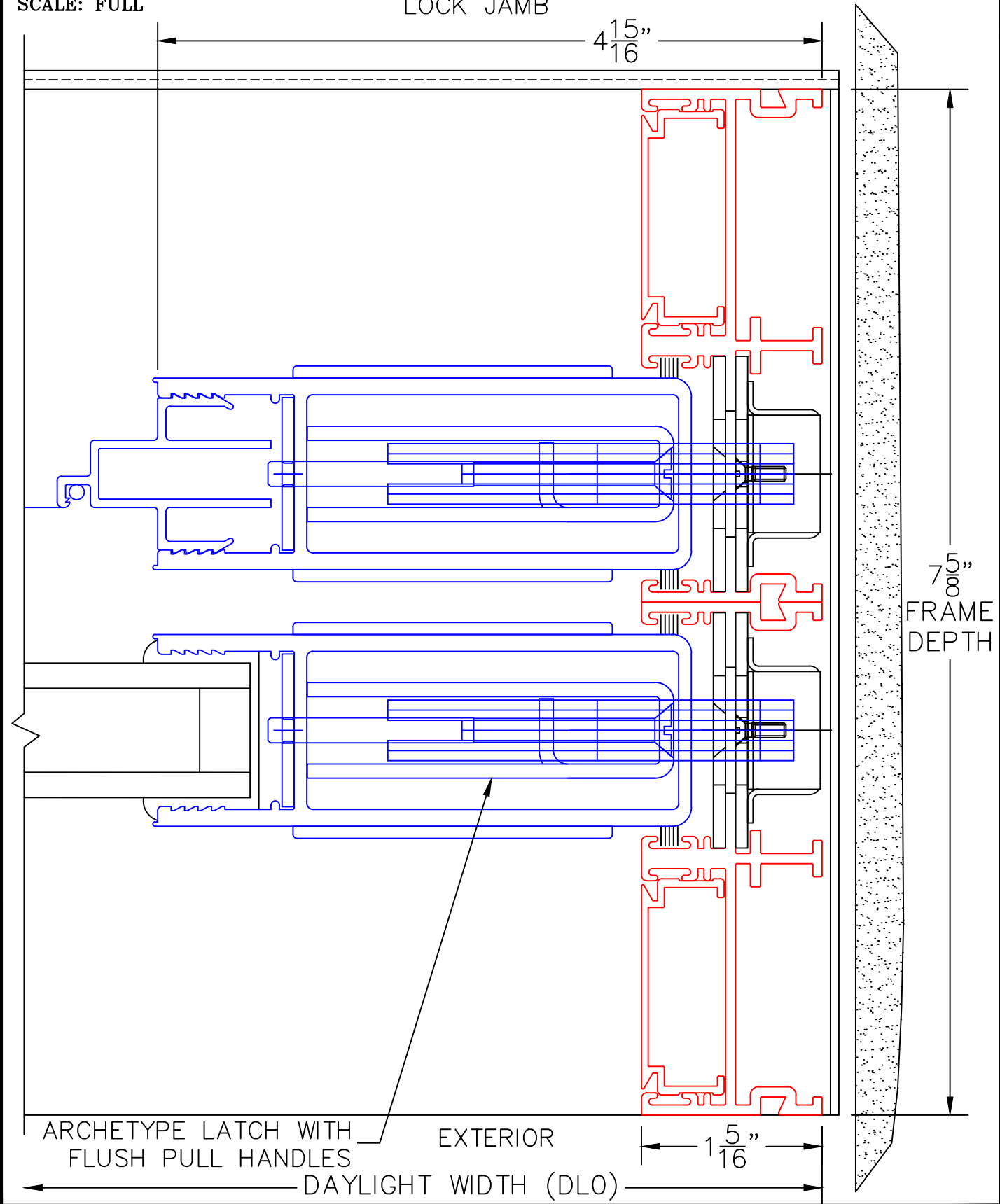
7 ⁵/₈"
FRAME
DEPTH

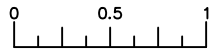
ARCHETYPE LATCH WITH
FLUSH PULL HANDLES

EXTERIOR

1 ⁵/₁₆"

DAYLIGHT WIDTH (DLO)





(USE RULER TO SCALE DIMENSIONS IN INCHES)

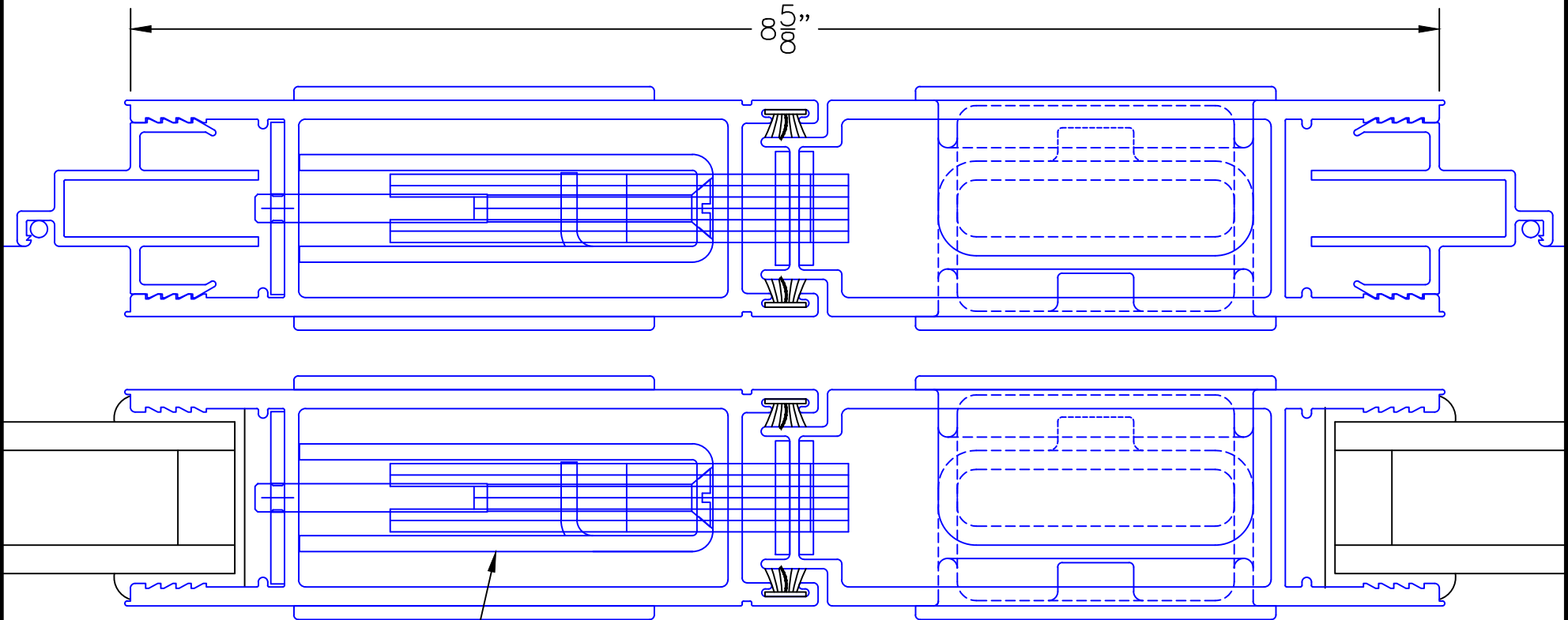
SCALE: FULL

PXXIXXP DOOR

7

MEETING
STILES

85"
8



ARCHETYPE LATCH WITH
FLUSH PULL HANDLES

EXTERIOR