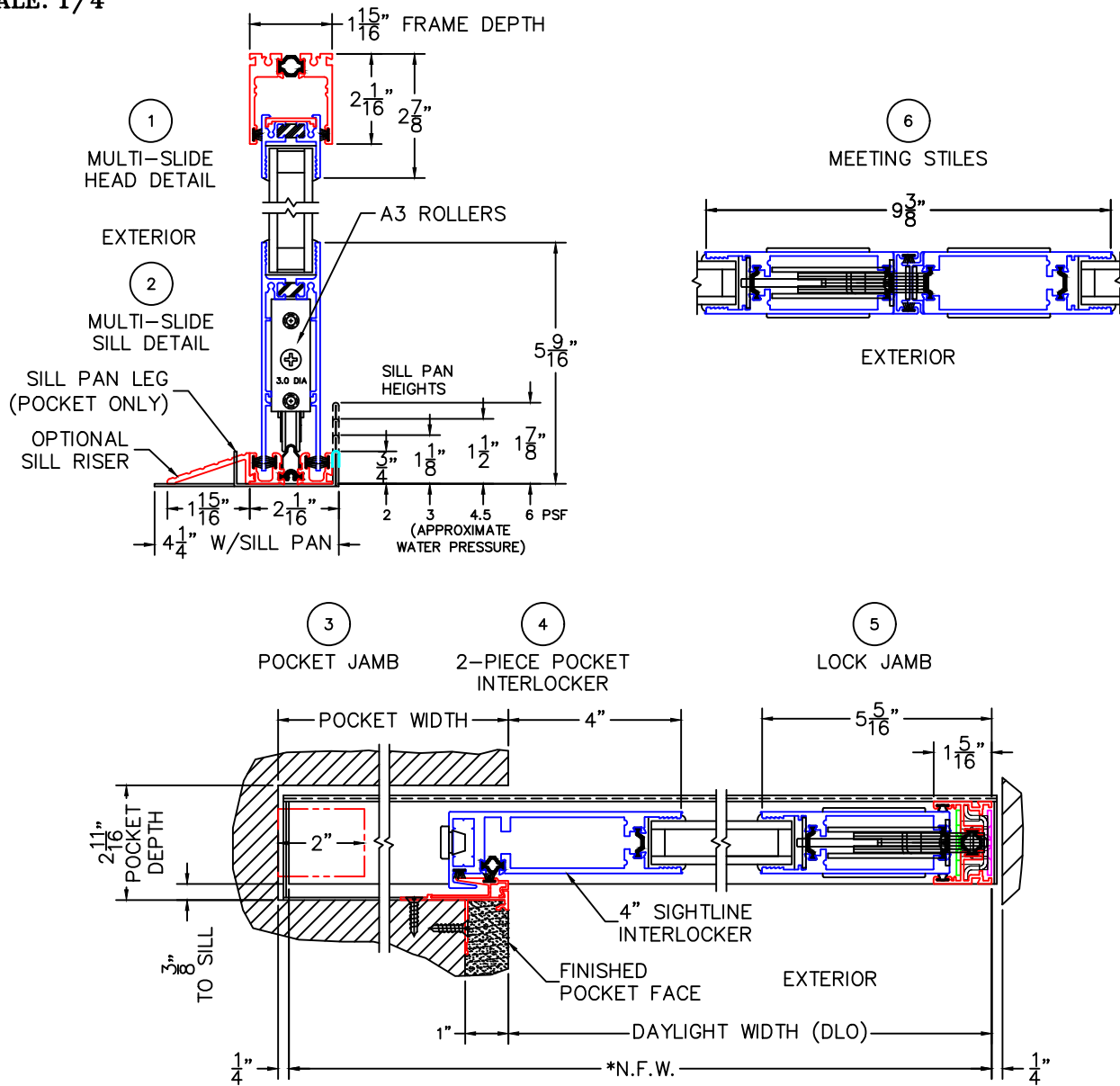
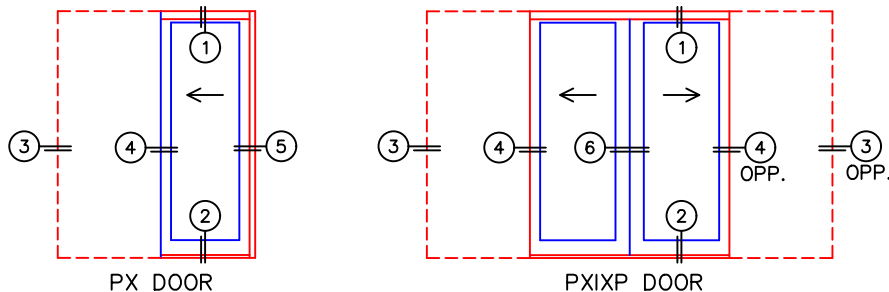


(USE RULER TO SCALE DIMENSIONS IN INCHES)
SCALE: 1/4

MULTI-SLIDE POCKET DOOR DETAILS
PX DOOR SHOWN



NOTE: CENTERLINES ARE NOT DIVIDED EQUALLY; CONFIRM CENTERLINES WHEN REQUIRED.



- *NET FRAME WIDTH DOES NOT INCLUDE SILL PAN.
- SILL PAN EXTENDS 1/8" BEYOND EACH JAMB.
- PLAN VIEW DOES NOT SHOW SILL RISER.
- FOR ADDITIONAL OPTIONS AND UPGRADES SEE DRAWINGS 3070-T-08 AND 3070-T-09.

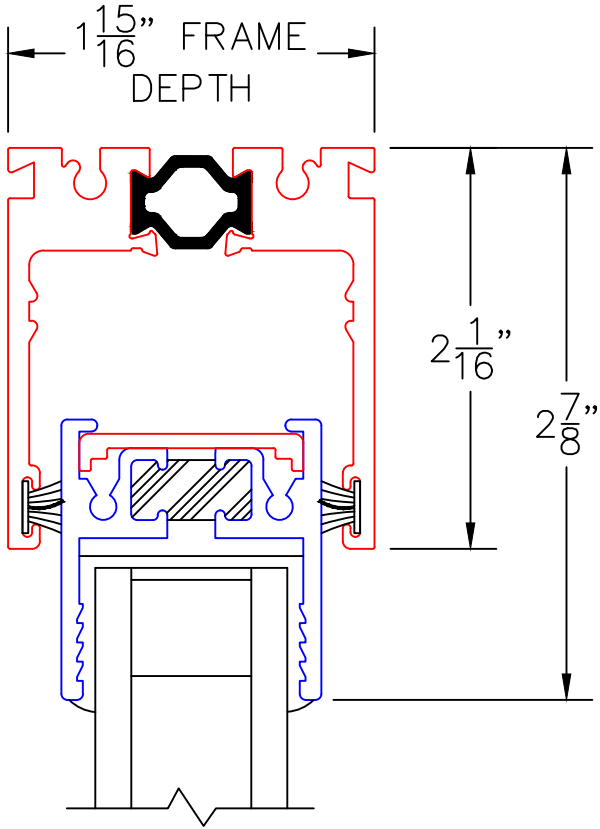
- EXTERIOR RATED PRODUCTS HAVE WEEP SLOTS ON HORIZONTAL SILLS.
- GLASS PENETRATION: 11/16"

0 0.5 1
(USE RULER TO SCALE DIMENSIONS IN INCHES)
SCALE: FULL

MULTI-SLIDE DOOR DETAILS
PX DOOR SHOWN

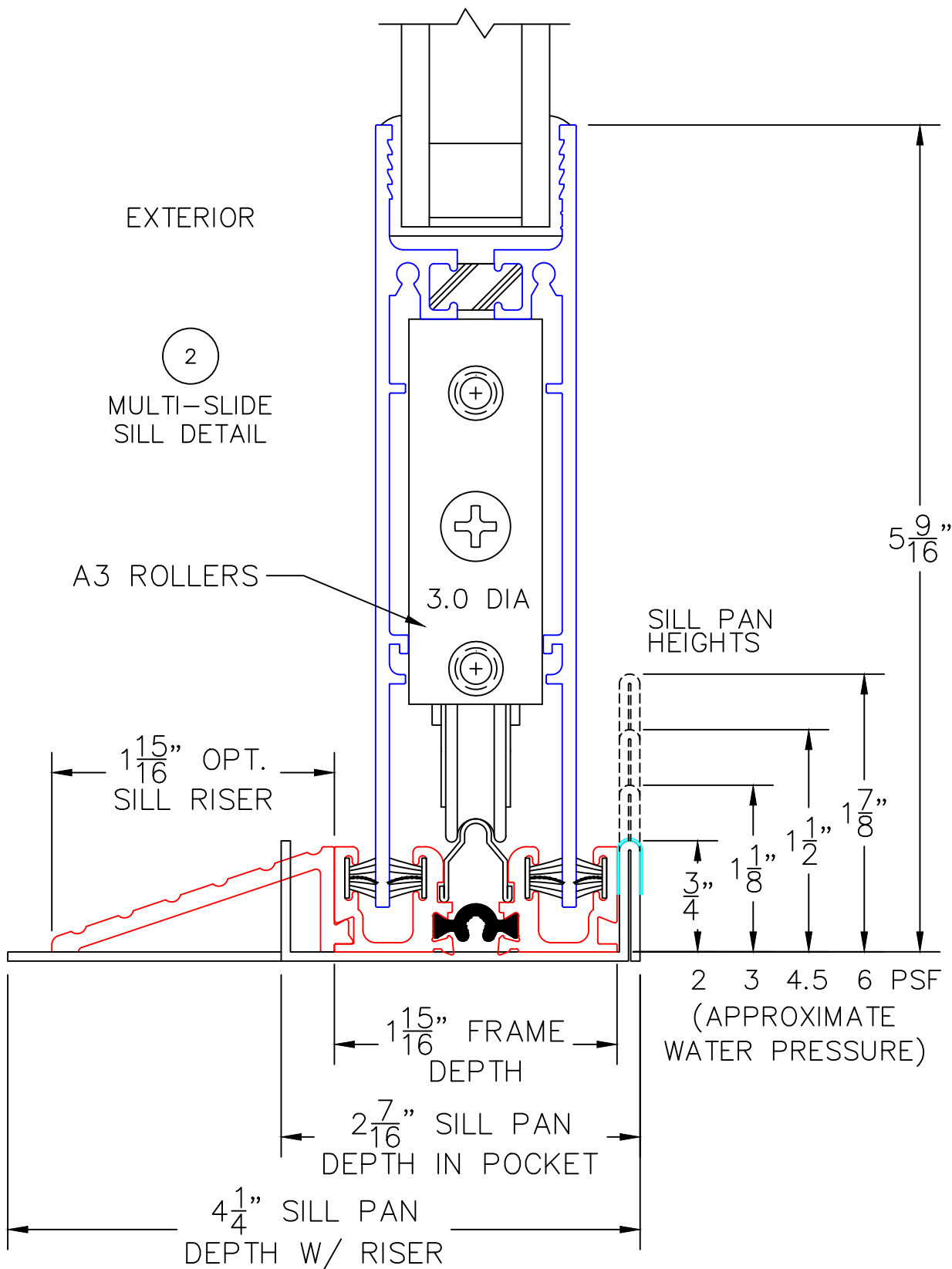
①
MULTI-SLIDE
HEAD DETAIL

EXTERIOR



0 0.5 1
(USE RULER TO SCALE DIMENSIONS IN INCHES)
SCALE: FULL

MULTI-SLIDE DOOR DETAILS
PX DOOR SHOWN

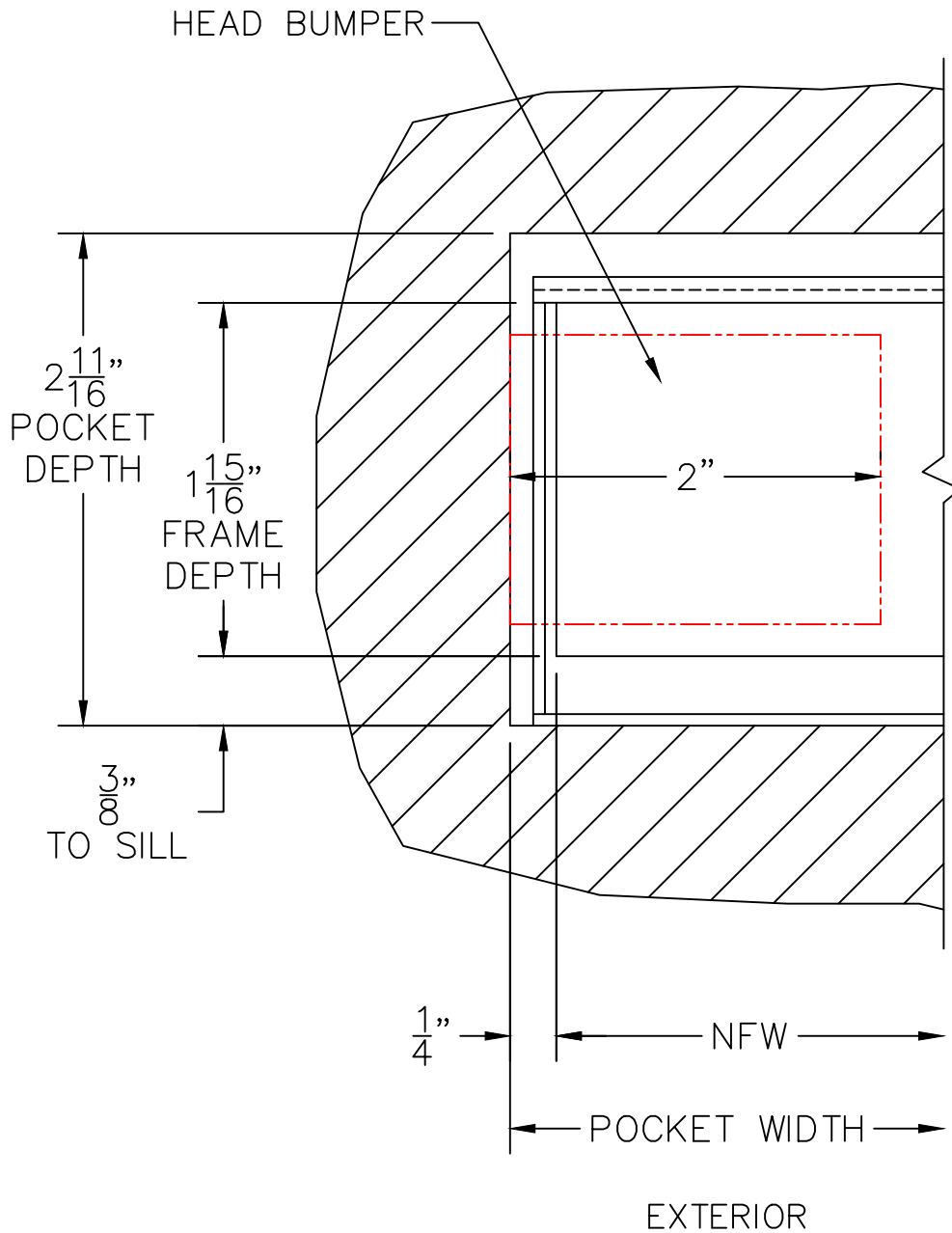


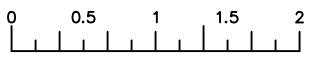
0 0.5 1
 (USE RULER TO SCALE DIMENSIONS IN INCHES)
SCALE: FULL

MULTI-SLIDE DOOR DETAILS
 PX DOOR SHOWN

3

POCKET JAMB





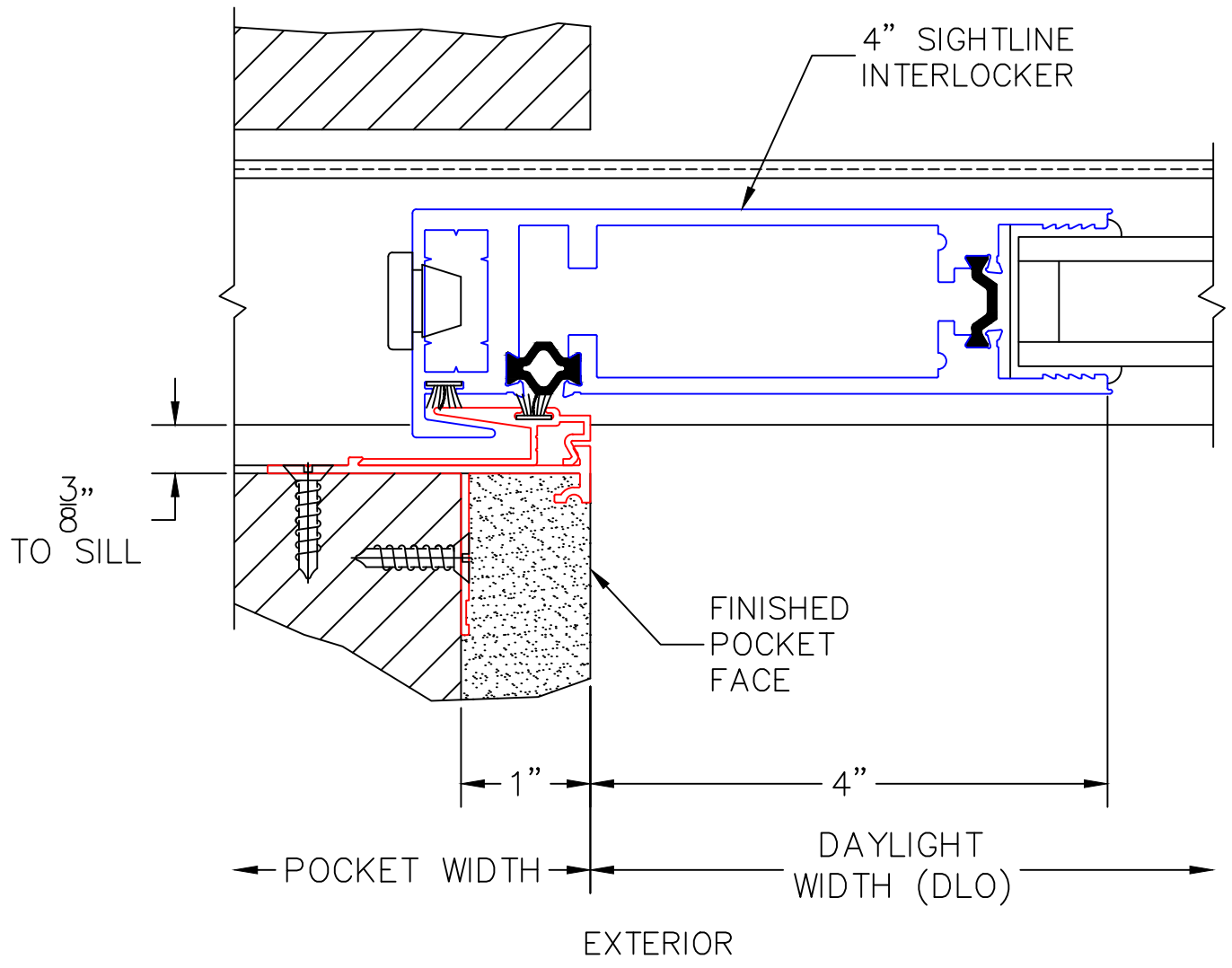
(USE RULER TO SCALE DIMENSIONS IN INCHES)

SCALE: 3/4

MULTI-SLIDE DOOR DETAILS
PX DOOR SHOWN

4

2-PIECE POCKET INTERLOCKER



0 0.5 1
(USE RULER TO SCALE DIMENSIONS IN INCHES)
SCALE: FULL

MULTI-SLIDE DOOR DETAILS
PX DOOR SHOWN

5

LOCK JAMB

$\frac{1}{8}$ " FOR
SILL PAN

$\frac{15}{16}$ "
FRAME
DEPTH

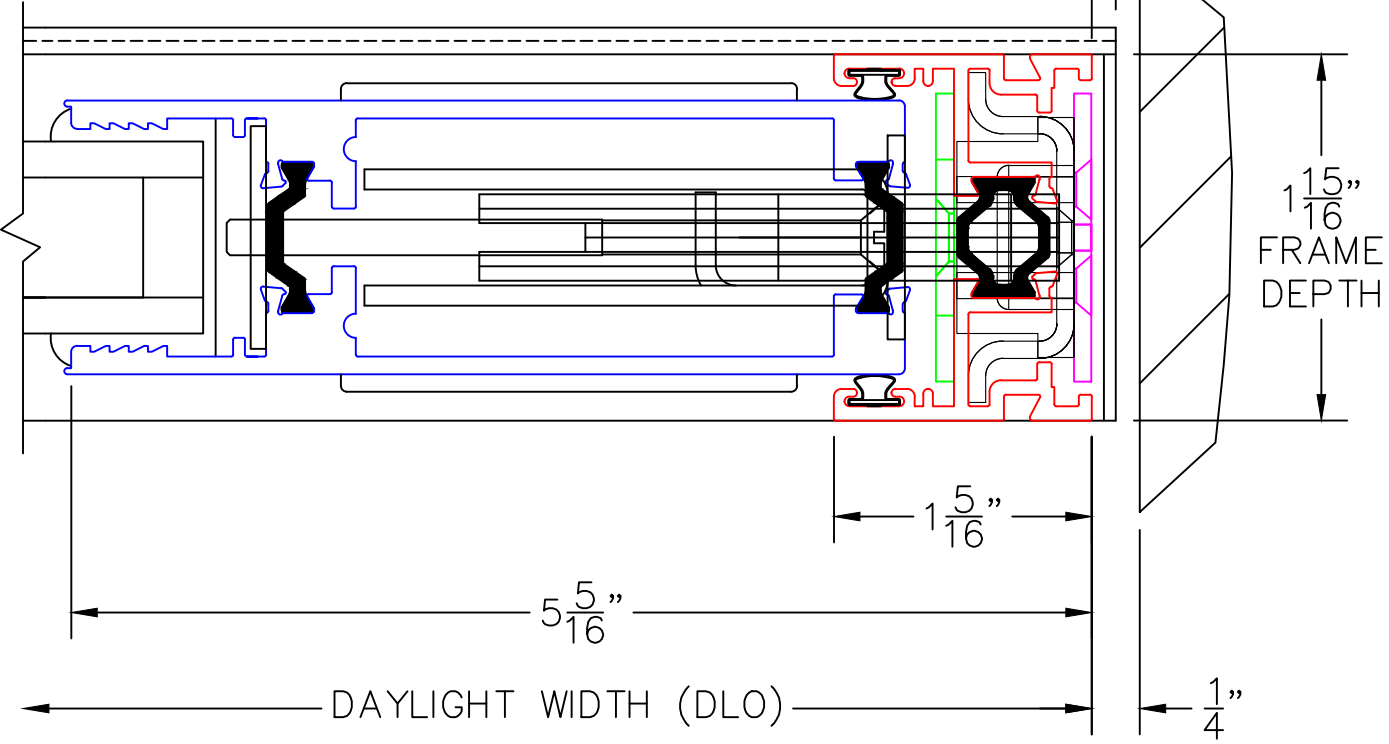
$1\frac{5}{16}$ "

$5\frac{5}{16}$ "

DAYLIGHT WIDTH (DLO)

$\frac{1}{4}$ "

EXTERIOR



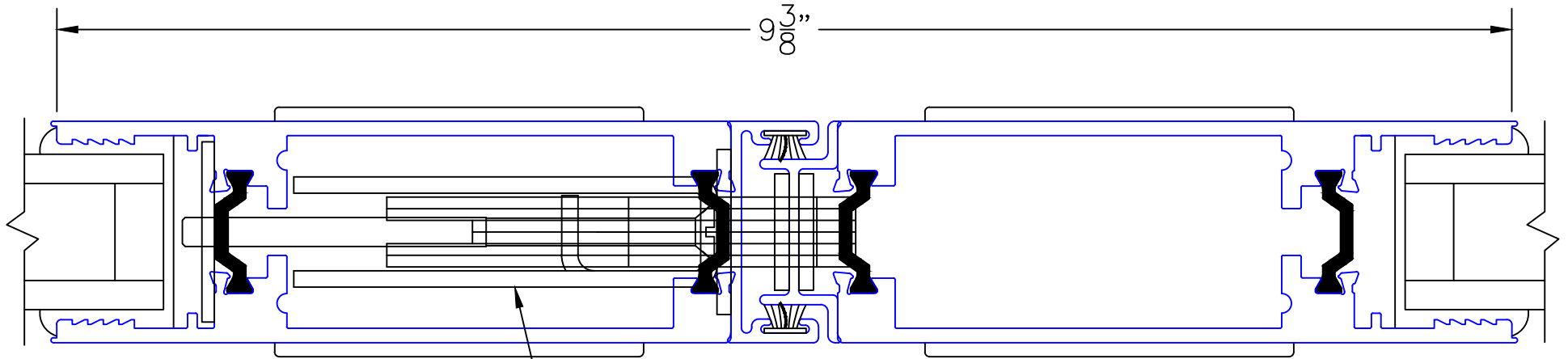
0 0.5 1
(USE RULER TO SCALE DIMENSIONS IN INCHES)
SCALE: FULL

MULTI-SLIDE DOOR DETAILS PXIXP DOOR SHOWN

6

MEETING STILES

9 ³/₈"



ARCHETYPE LATCH WITH
FLUSH PULL HANDLES

EXTERIOR