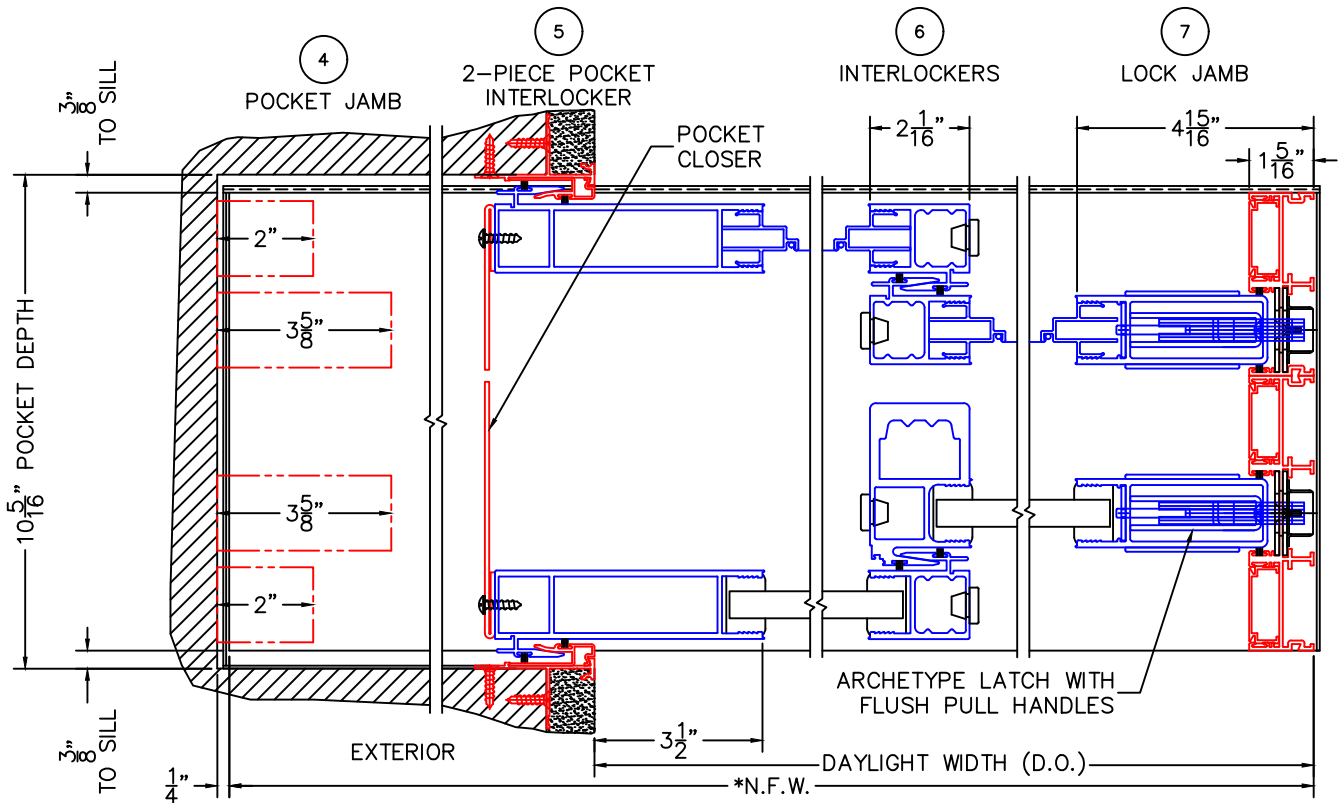
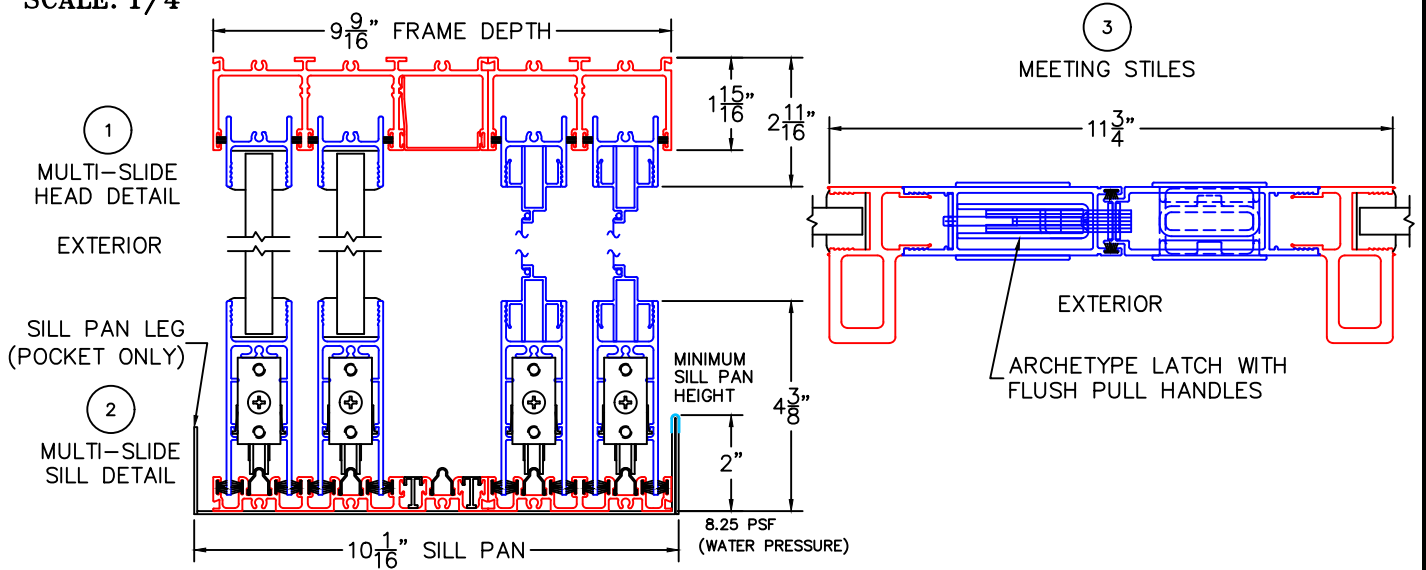




(USE RULER TO SCALE DIMENSIONS IN INCHES)

SCALE: 1/4"

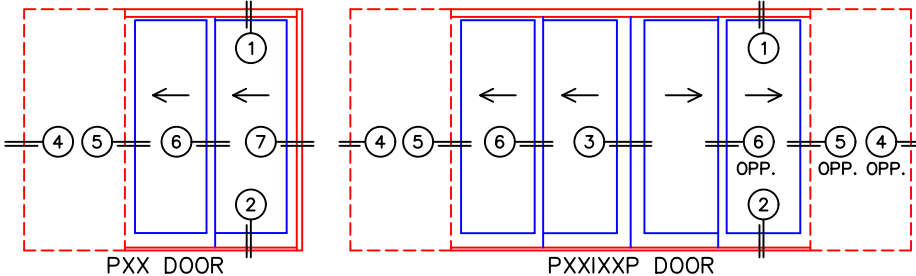
MULTI-SLIDE POCKET DOOR DETAILS
PXX DOOR WITH SCREENS

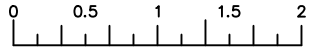


NOTE: CENTERLINES ARE NOT DIVIDED EQUALLY; CONFIRM CENTERLINES WHEN REQUIRED.

*NET FRAME WIDTH DOES NOT INCLUDE SILL PAN.

- SILL PAN EXTENDS 1/8" BEYOND EACH JAMB.
- ENCLOSED PX AND XP DOORS MAY REQUIRE POCKET DEMO FOR PANEL REMOVAL.
- HP EXTRUSION LOCATIONS MAY VARY.
- EXTERIOR RATED PRODUCTS HAVE WEEP SLOTS ON HORIZONTAL SILLS.
- GLASS PENETRATION: 11/16"

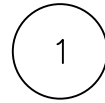




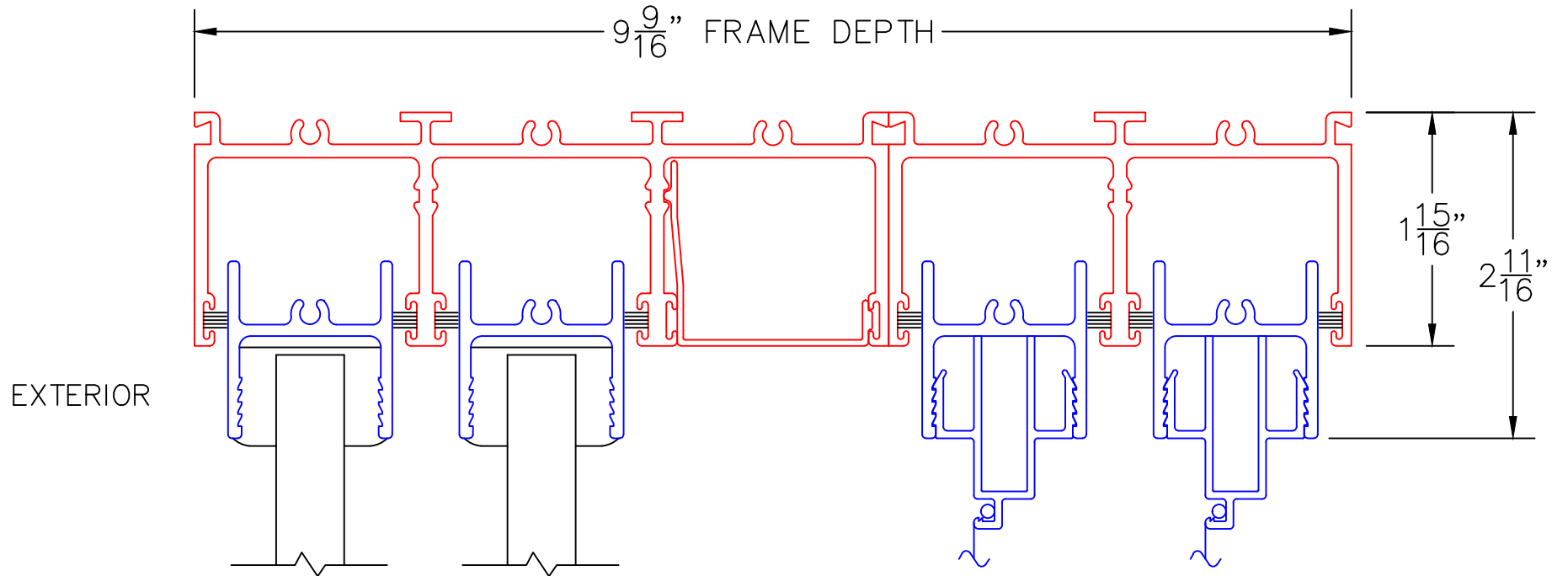
(USE RULER TO SCALE DIMENSIONS IN INCHES)

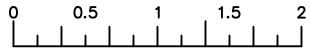
SCALE: 3/4

PXX DOOR



MULTI-SLIDE
HEAD DETAIL

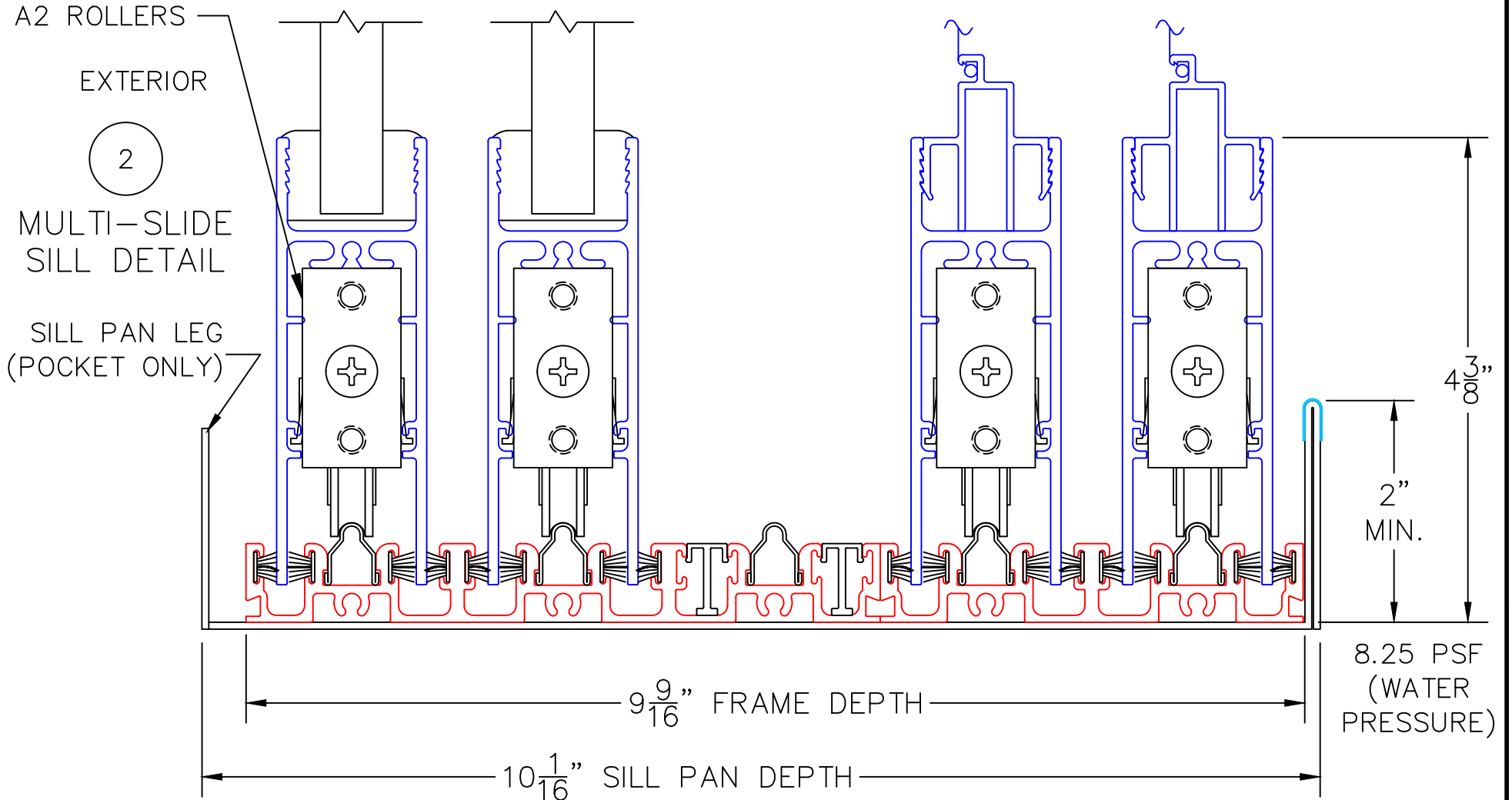


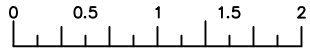


(USE RULER TO SCALE DIMENSIONS IN INCHES)

SCALE: 3/4

PXX DOOR





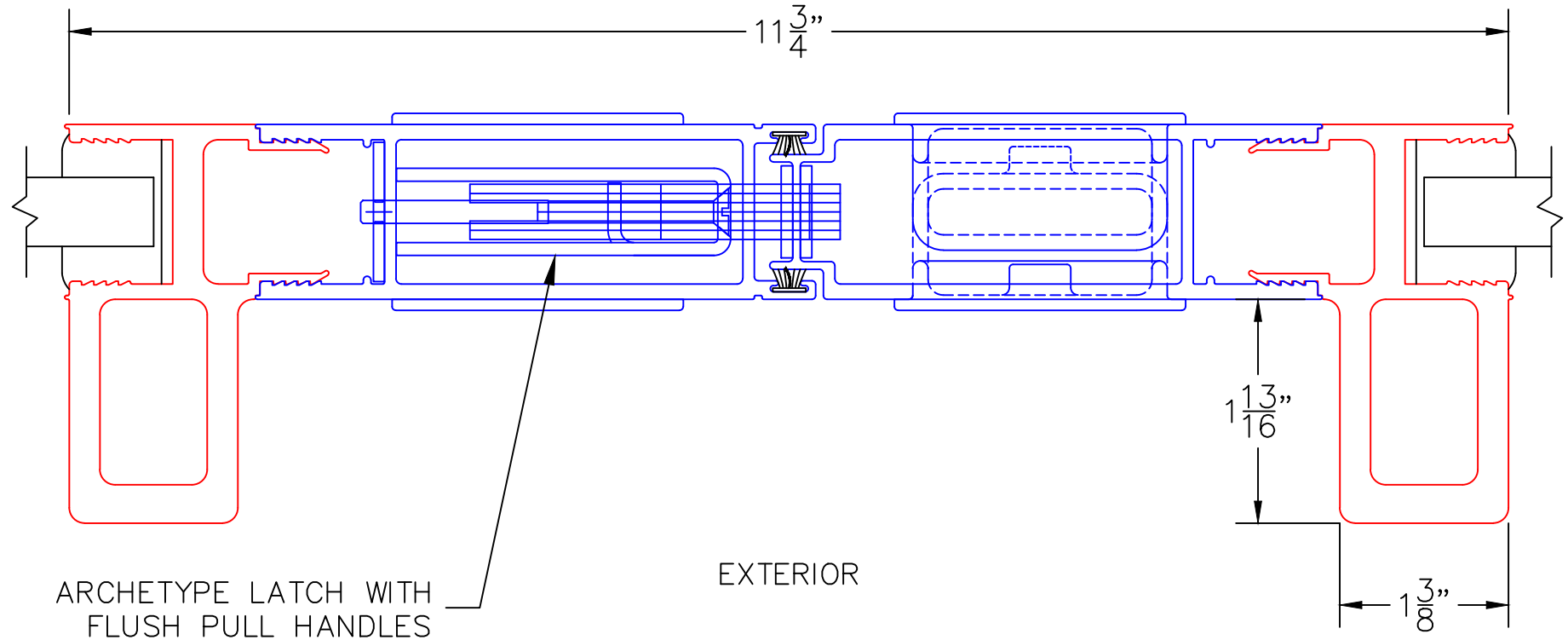
(USE RULER TO SCALE DIMENSIONS IN INCHES)

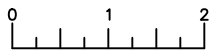
SCALE: 3/4

PXXIXXP DOOR

3

MEETING STILES

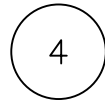




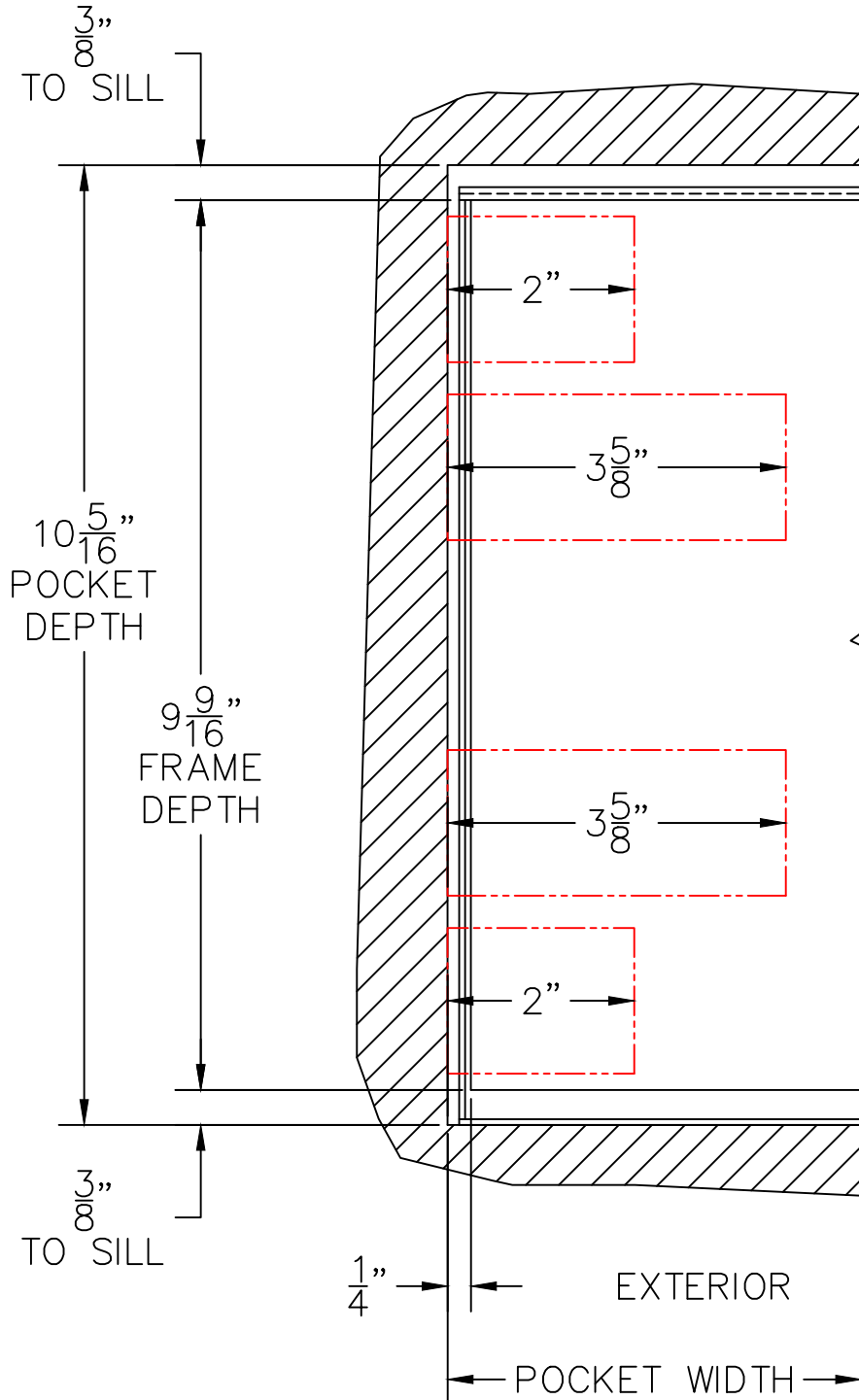
(USE RULER TO SCALE DIMENSIONS IN INCHES)

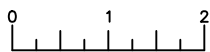
SCALE: 1/2

PXX DOOR



POCKET JAMB





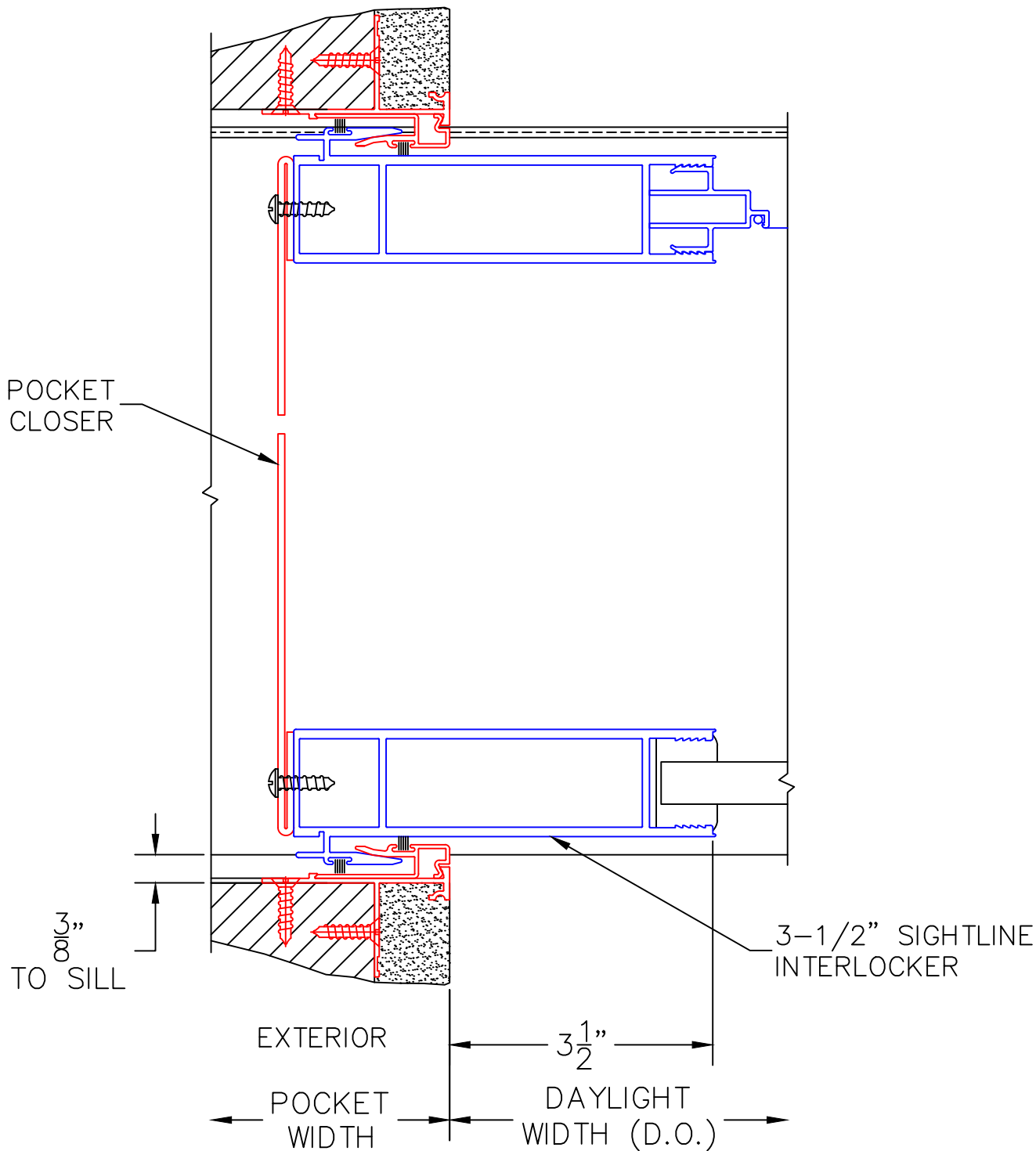
(USE RULER TO SCALE DIMENSIONS IN INCHES)

SCALE: 1/2

PXX DOOR

5

2-PIECE POCKET INTERLOCKER





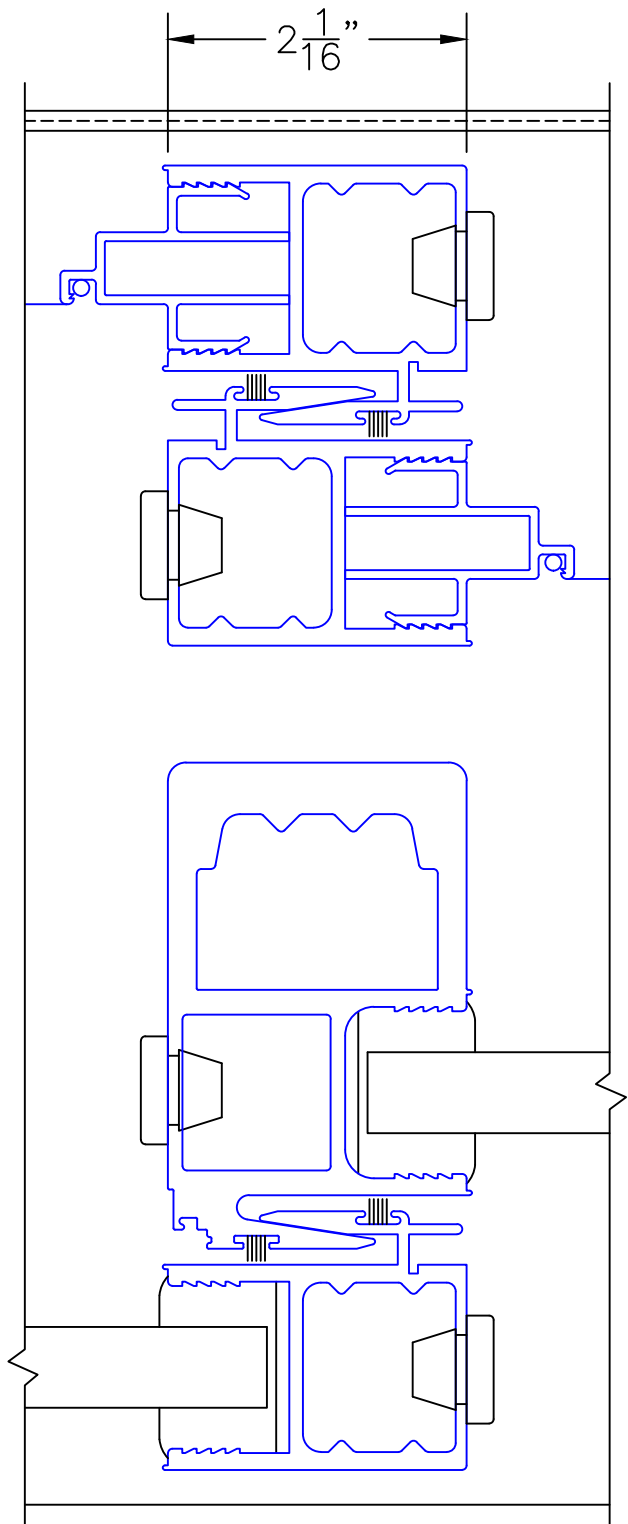
(USE RULER TO SCALE DIMENSIONS IN INCHES)

SCALE: 3/4

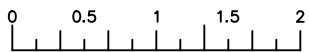
PXX DOOR

6

INTERLOCKERS



EXTERIOR



(USE RULER TO SCALE DIMENSIONS IN INCHES)

SCALE: 3/4

PXX DOOR

7

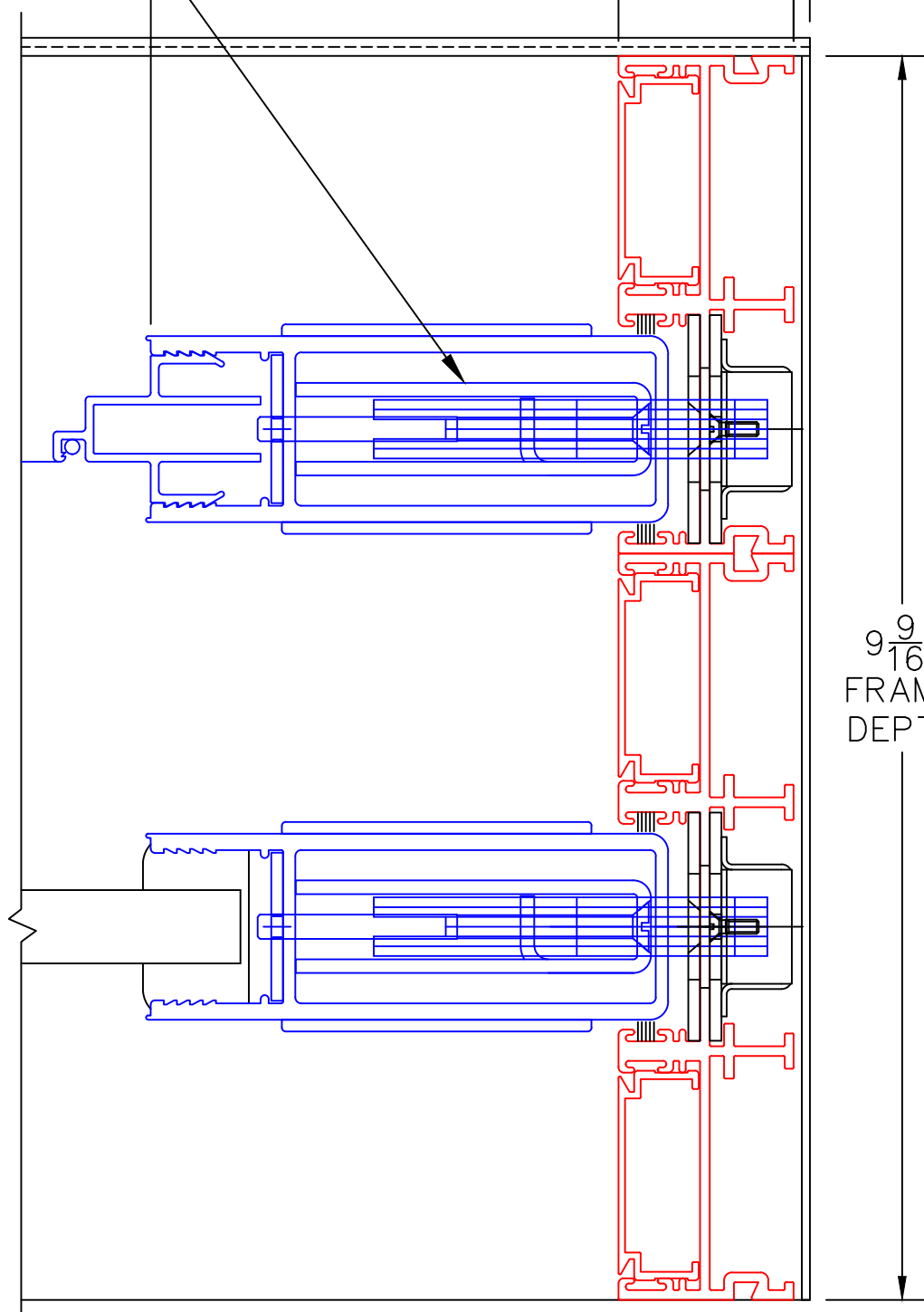
LOCK JAMB

$\frac{1}{8}$ " FOR
SILL PAN

ARCHETYPE LATCH
WITH FLUSH
PULL HANDLES

$4\frac{15}{16}$ "

$1\frac{5}{16}$ "



$9\frac{9}{16}$ "
FRAME
DEPTH

EXTERIOR