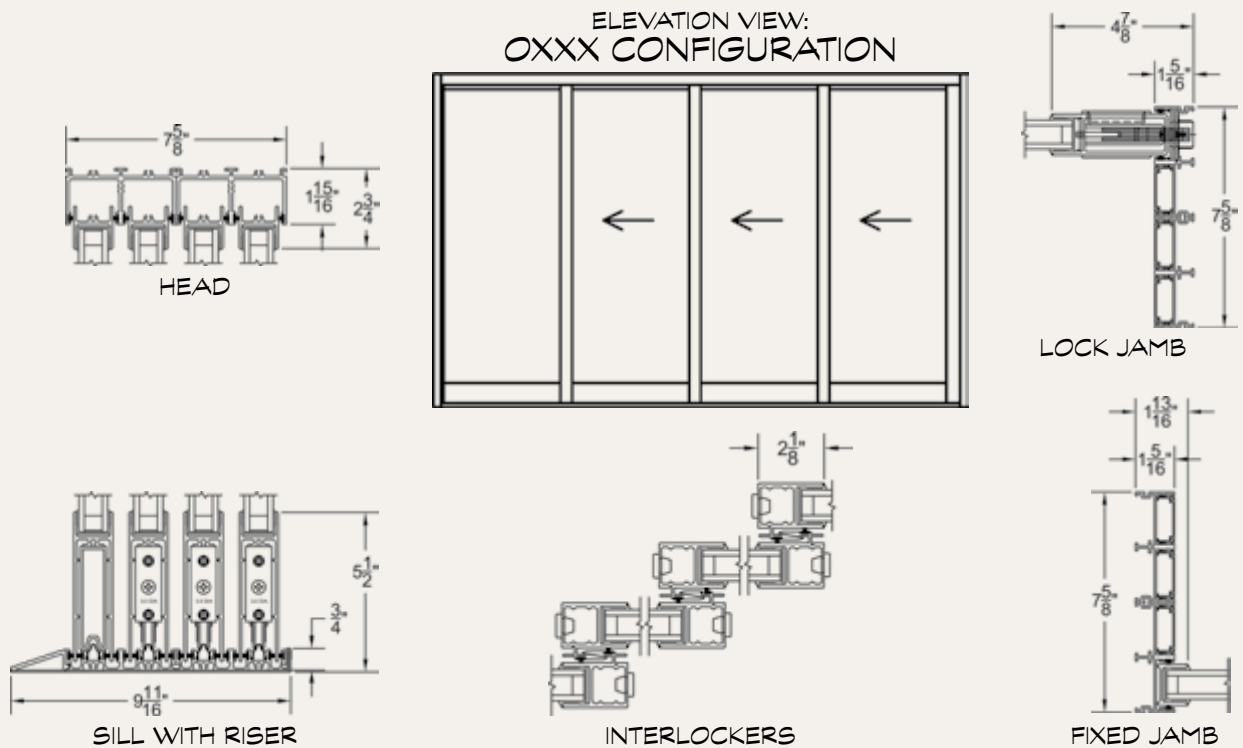


NORWOOD 3070-EX MULTI-SLIDE & POCKET DOOR



CONFIGURATIONS	← MAX PANEL WIDTH	↑ MAX PANEL HEIGHT	☀ BEST SHGC	❄ BEST U-VALUE
<ul style="list-style-type: none"> Unlimited Multi-Slide, Curved, Pocket, and Corner applications. 	96"	162"	0.16	0.29*

ELEVATION VIEW:
OXXX CONFIGURATION



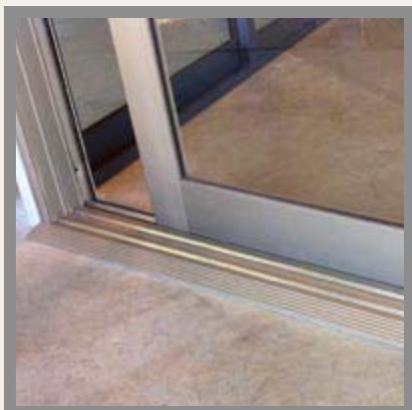
*Based on a special size simulation of a 24' x 12' OXXX configuration. NFRC standard size yields 0.46.





DESIGN NOTES

- Huge sizes/thin sightlines.
- Easiest rolling door made.
- Weather rated.

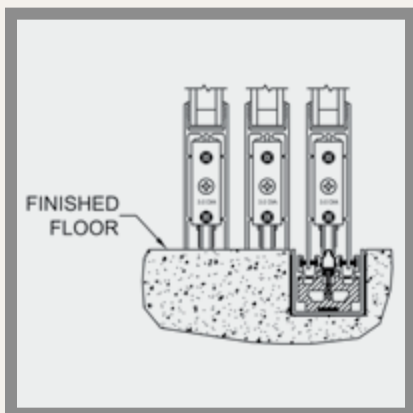


Archetype:

Our patent pending Archetype latching system is cast with 316 stainless steel and fits snug against the extrusion to prevent damage to other panels during operation. The 316 stainless is then electro polished for the best marine grade protection. The actuator is easy to operate and expels a large, laminated hook latch similar to commercial products. Additionally, the quality materials allow for post-sale custom finishing.

Sill & Head Fillers:

The Series 3070 comes standard with matching extrusions that fill unused cavities in the head and sill. These closers enhance the cosmetic beauty of the product but also serve the practical function of repelling sand, water, air and bugs.



Sub-Sillpan Option:

This feature creates a continuous floor look similar to the Series 3050 but with the weather performance benefits of the Series 3070-EX. The detail (above) shows how the tracking system can be level with the finished floor but still provide exceptional water performance underneath.



Double Leg Rail:

The double leg design is both attractive and functional. To appreciate its beauty, you need to see a full size display. The double leg offers twice as much weather-stripping as a cheaper, single leg design and better repels sand, debris, insects and other unwanted matter.

For budget driven jobs, Fleetwood offers entry level products. See page 34 for more information.