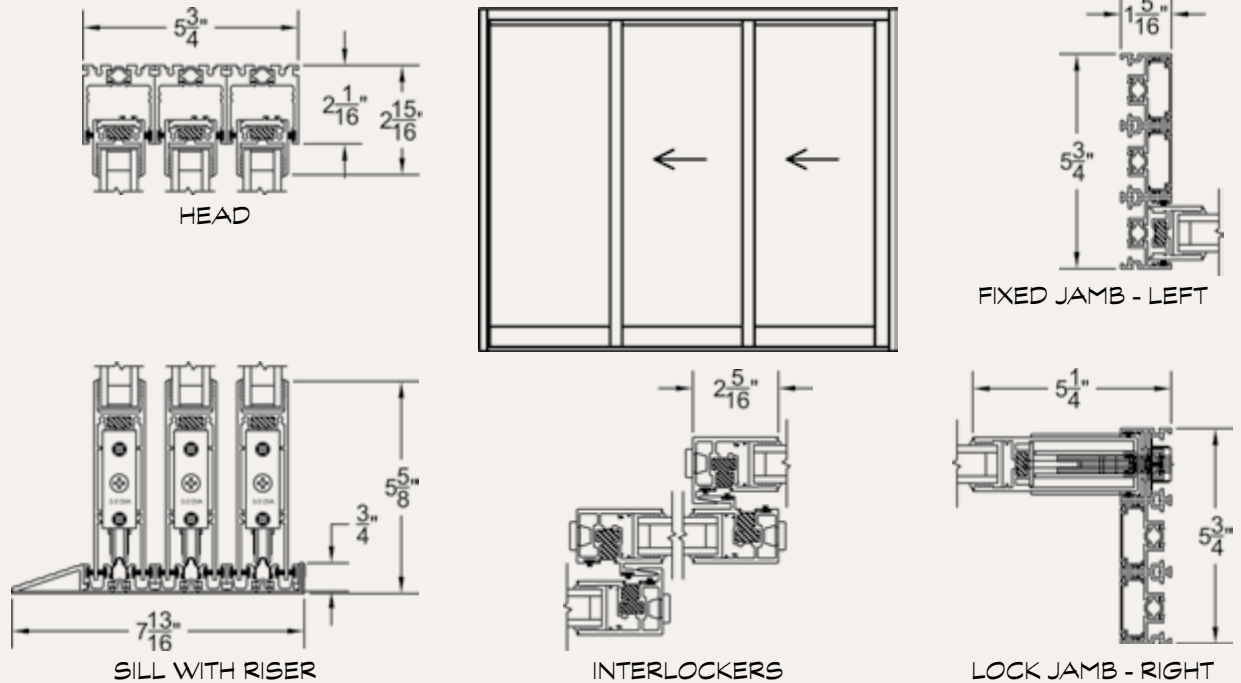


“THERMAL FRAME” MULTI-SLIDE & POCKET DOOR



CONFIGURATIONS	← MAX PANEL WIDTH	↑ MAX PANEL HEIGHT	☀ BEST SHGC	❄ BEST U-VALUE
<ul style="list-style-type: none"> Unlimited Multi-Slide, Pocket, and Corner applications. 	84"	120"	0.16	0.28*

ELEVATION VIEW: OXX CONFIGURATION



*Based on a special size simulation of a 12' x 10' OXX configuration. NFRC standard size yields 0.34.





DESIGN NOTES

- More energy efficient version of the 3070-EX.
- The first completely insulated multi-slide door.



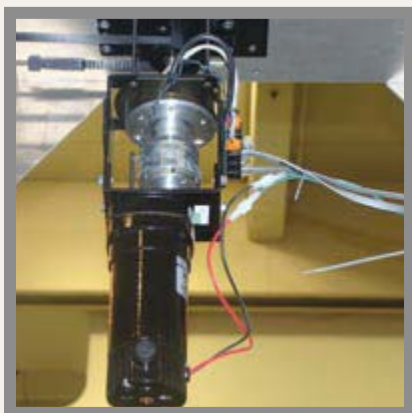
Flush Stacking:

This optional feature allows for all panels, both fixed and sliding, to have a flush face when fully open. There is no additional charge for this feature.



“Thermal Frame” Extrusions:

Our designs have dramatically reduced the transfer of heat and cold through the extrusion by adding a thermal barrier. Fleetwood uses two methods: Pour/De-bridge and I-Strut. The former process involves pouring liquid polyurethane into an extrusion pocket and removing the underside once the liquid hardens. The I-Strut process involves mechanically joining a polyamide strut to two separate extrusions. Both are proven systems and each offer the Fleetwood Design Team with varying benefits.



Automation:

All of our pocket and multi-slide doors offer automation by Doors In Motion. Some other products offer automation too, but only Fleetwood's system provides an I-Gress Lever for emergencies or just for those times when you want to open the door the old-fashioned way – with your hand. Each motor can accommodate up to 8 panels, is available with remote control and keyless touch pad, and is compatible with corner and pocket configurations.



No Post Corner:

A custom extrusion was created to allow a 90° corner without the need for a post or jamb. The result is the strongest and most attractive corner door on the market. Imagine the stunning view once the doors are in the fully opened position. To make it even more dramatic, design the walls to allow these door panels to disappear into a pocket.

For budget driven jobs, Fleetwood offers entry level products. See page 34 for more information.