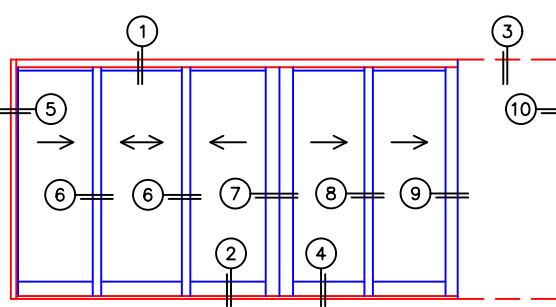
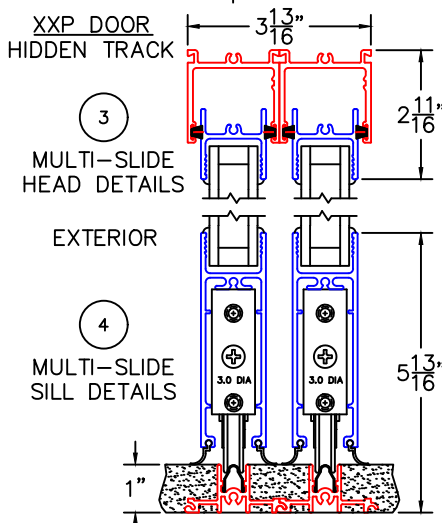
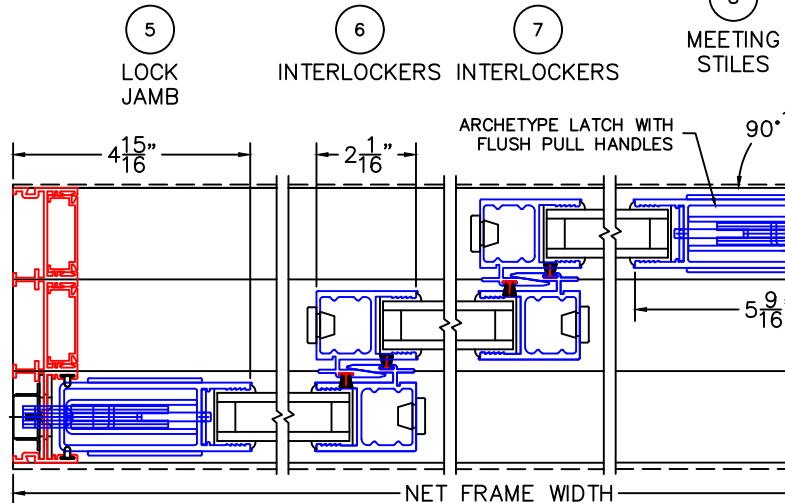
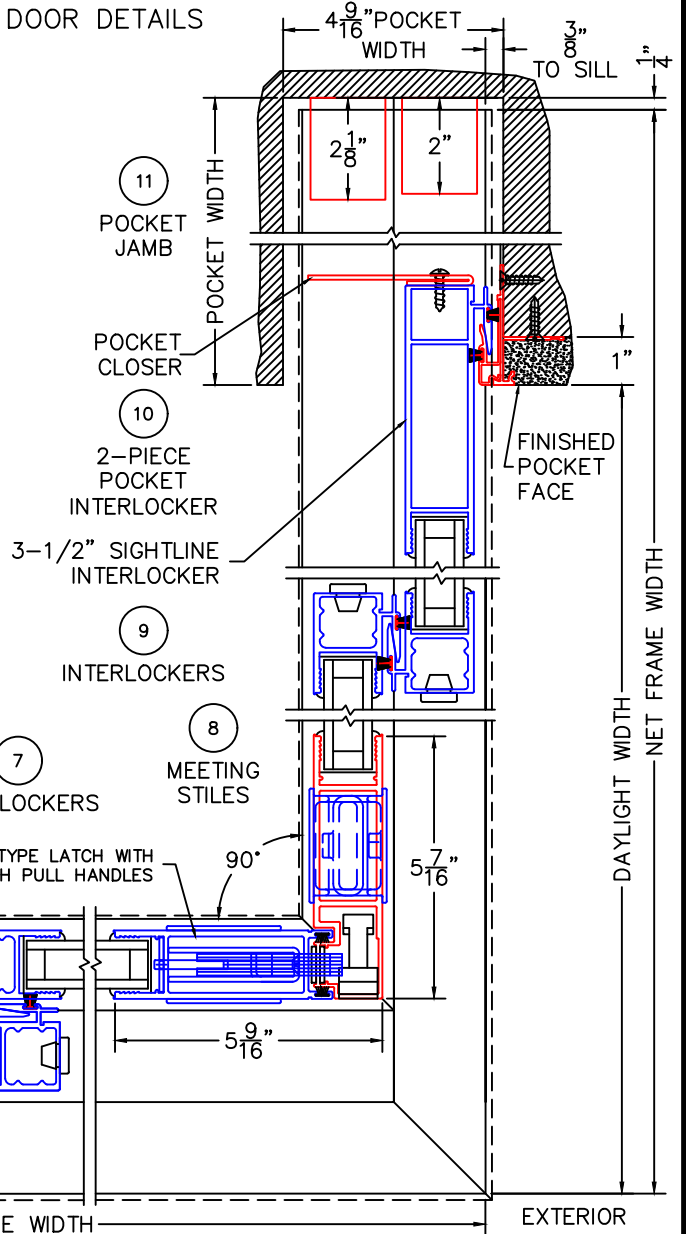
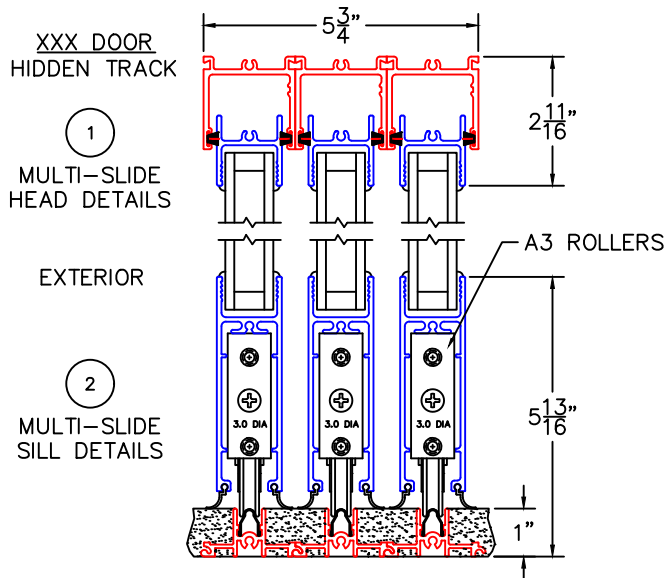


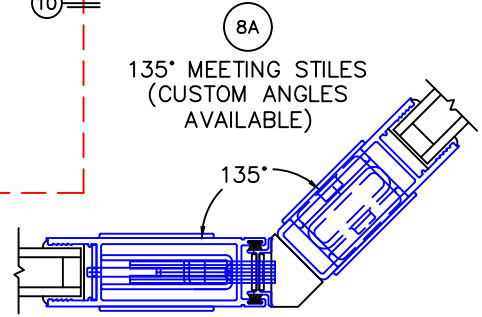
(USE RULER TO SCALE DIMENSIONS IN INCHES)

SCALE: 1/4

MULTI-SLIDE DOOR DETAILS

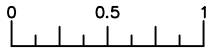


NOTE: CENTERLINES ARE NOT DIVIDED EQUALLY; CONFIRM CENTERLINES WHEN REQUIRED.



FOR ADDITIONAL OPTIONS AND UPGRADES SEE DRAWINGS 3050-08, 3050-09 & 3050-10.

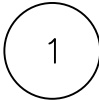
-GLASS PENETRATION: 11/16"



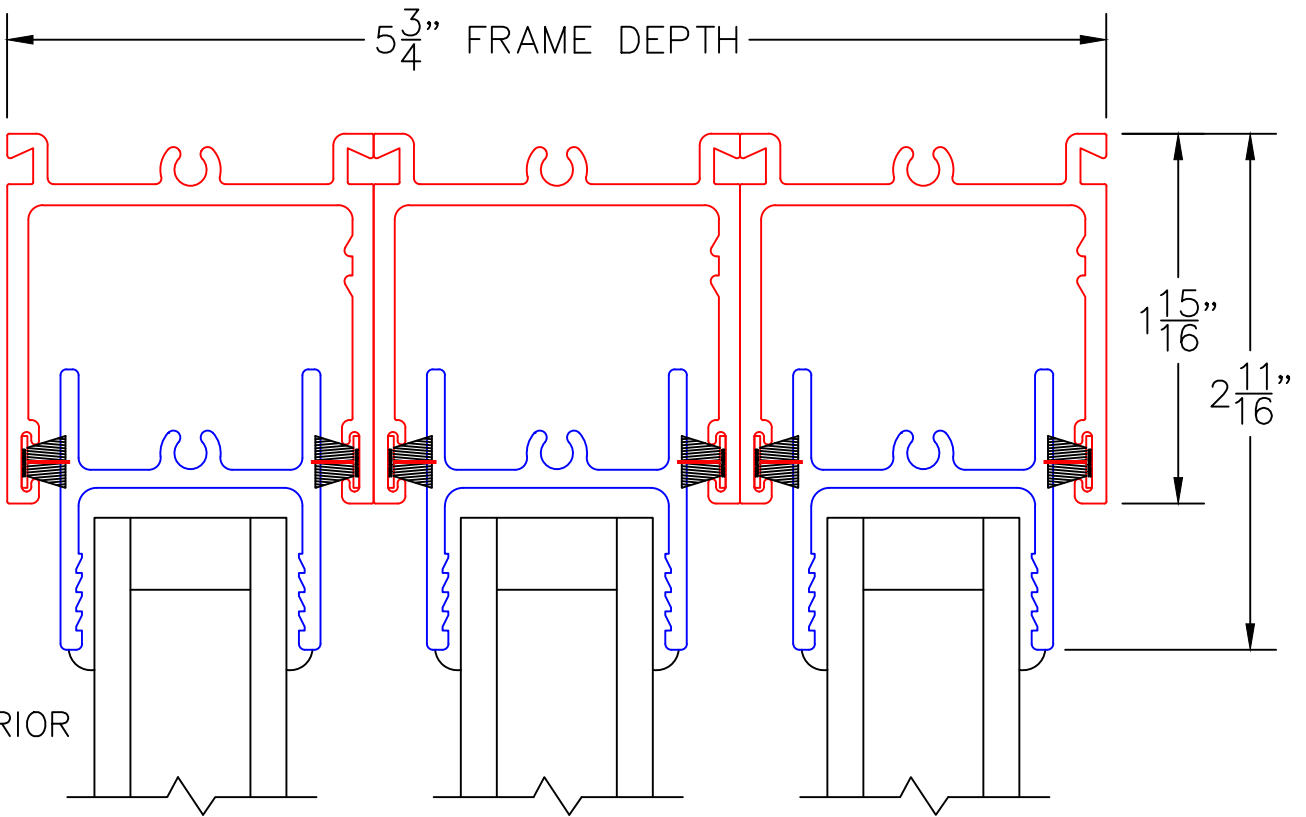
(USE RULER TO SCALE DIMENSIONS IN INCHES)

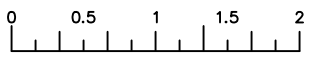
SCALE: FULL

XXX DOOR



MULTI-SLIDE
HEAD DETAIL





(USE RULER TO SCALE DIMENSIONS IN INCHES)

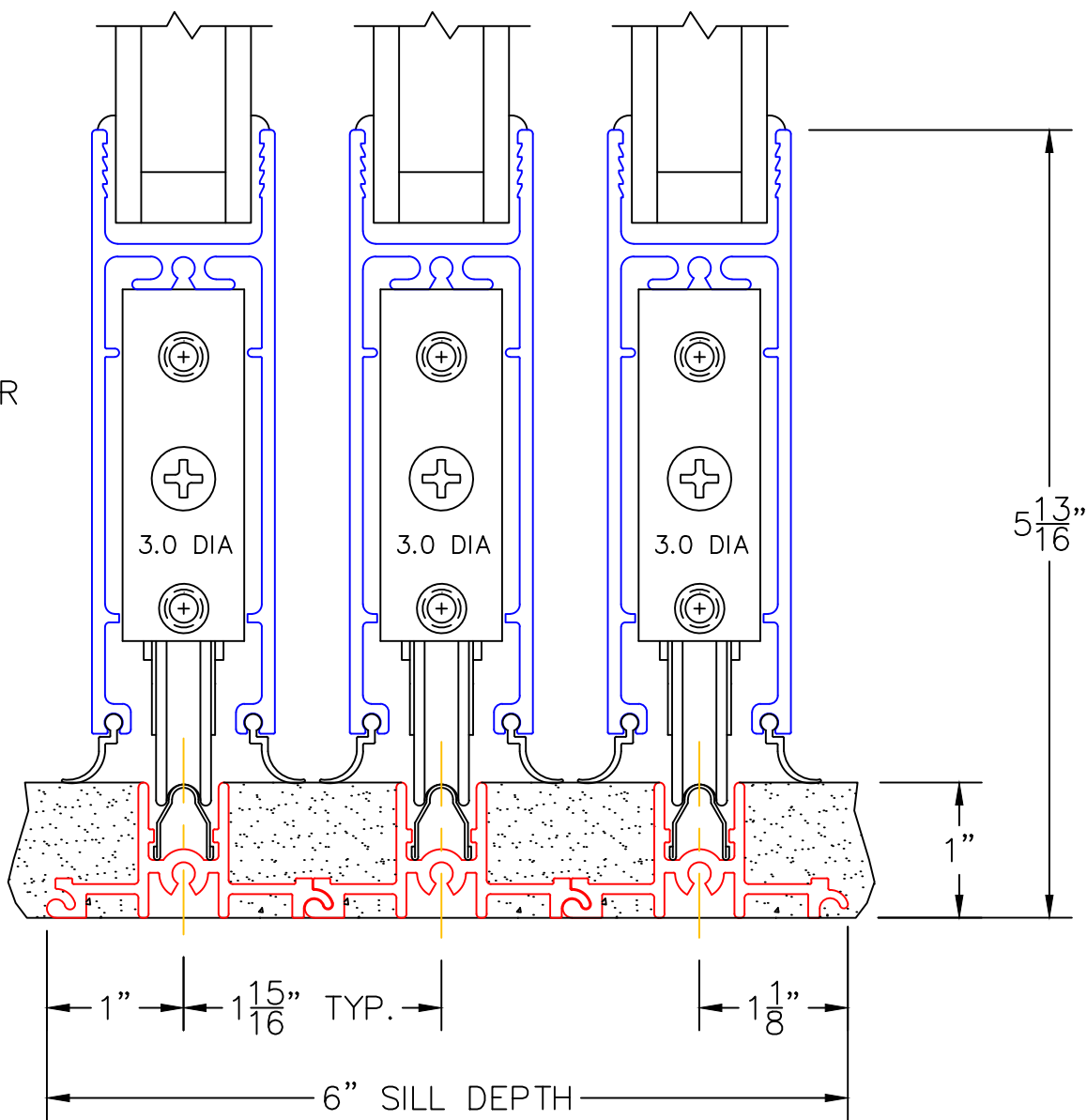
SCALE: 3/4

XXX DOOR
HIDDEN TRACK

2

MULTI-SLIDE
SILL DETAIL

EXTERIOR



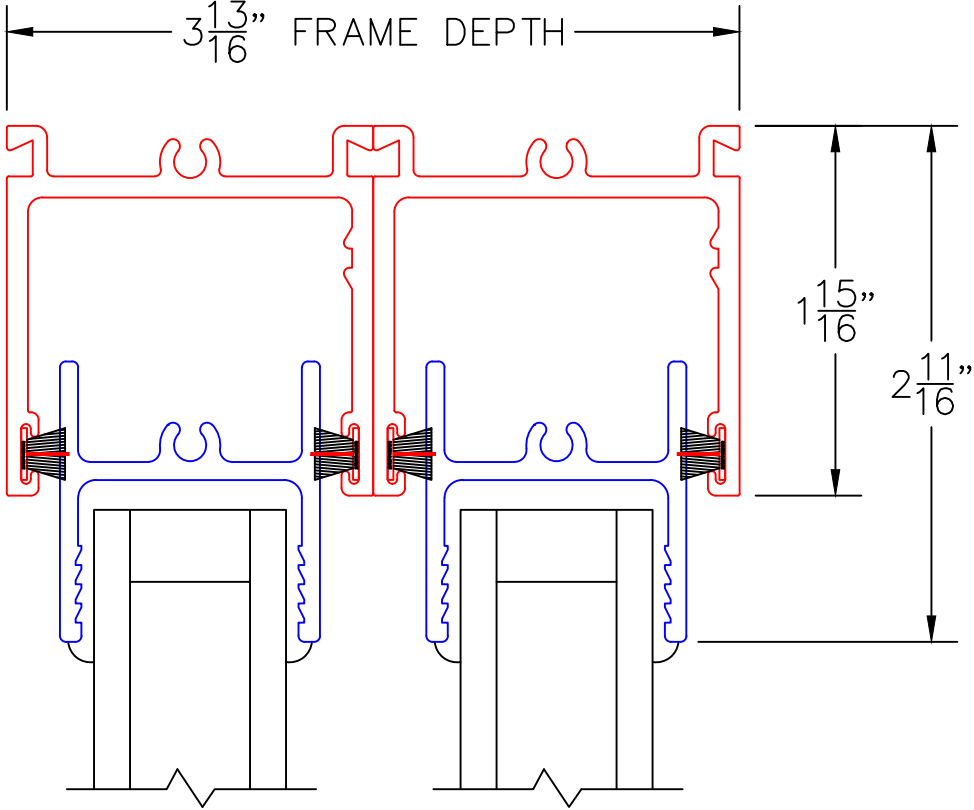
0 0.5 1
(USE RULER TO SCALE DIMENSIONS IN INCHES)
SCALE: FULL

XX DOOR
HIDDEN TRACK

3

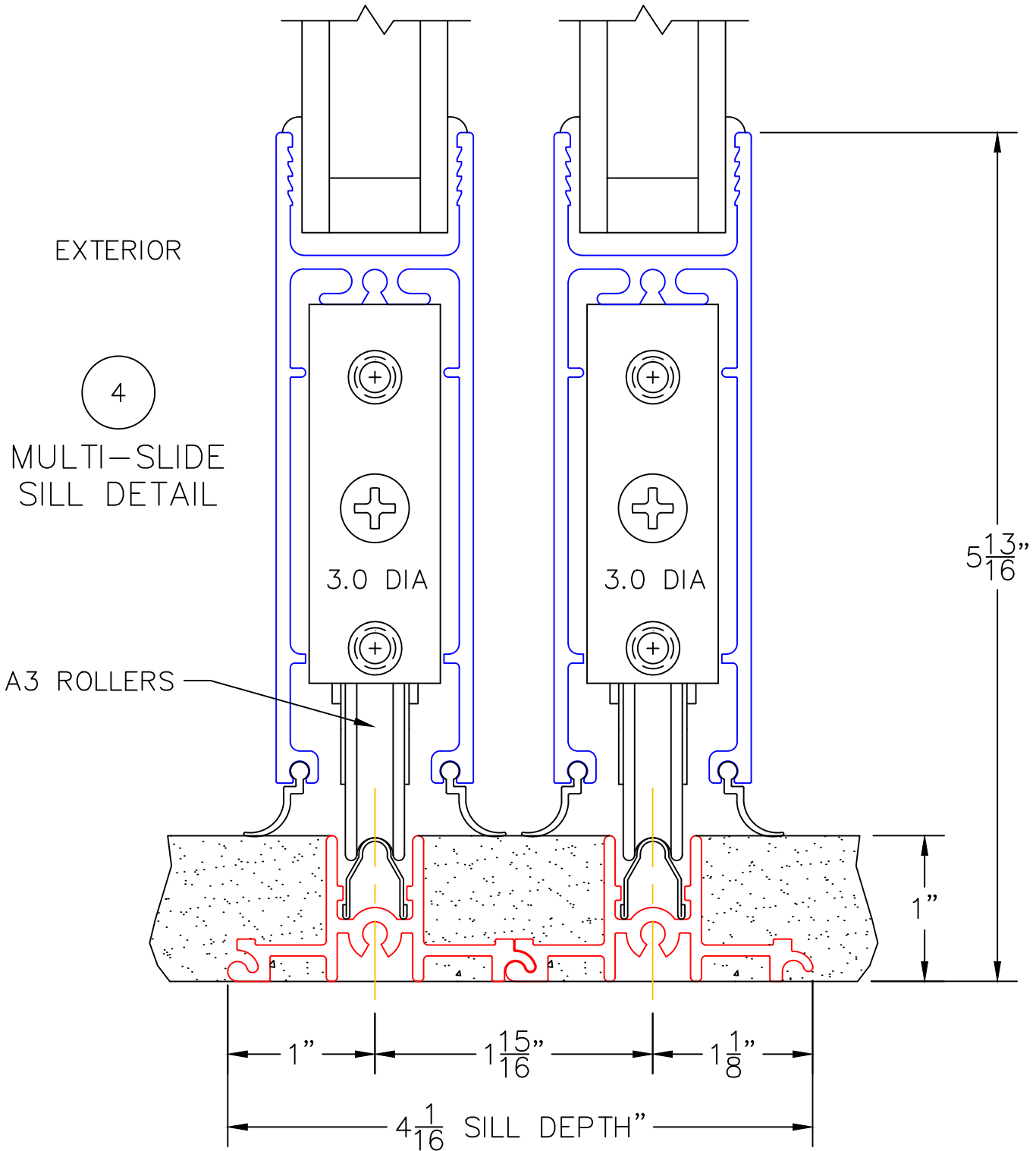
MULTI-SLIDE
HEAD DETAIL

EXTERIOR



0 0.5 1
(USE RULER TO SCALE DIMENSIONS IN INCHES)
SCALE: FULL

XX DOOR
HIDDEN TRACK

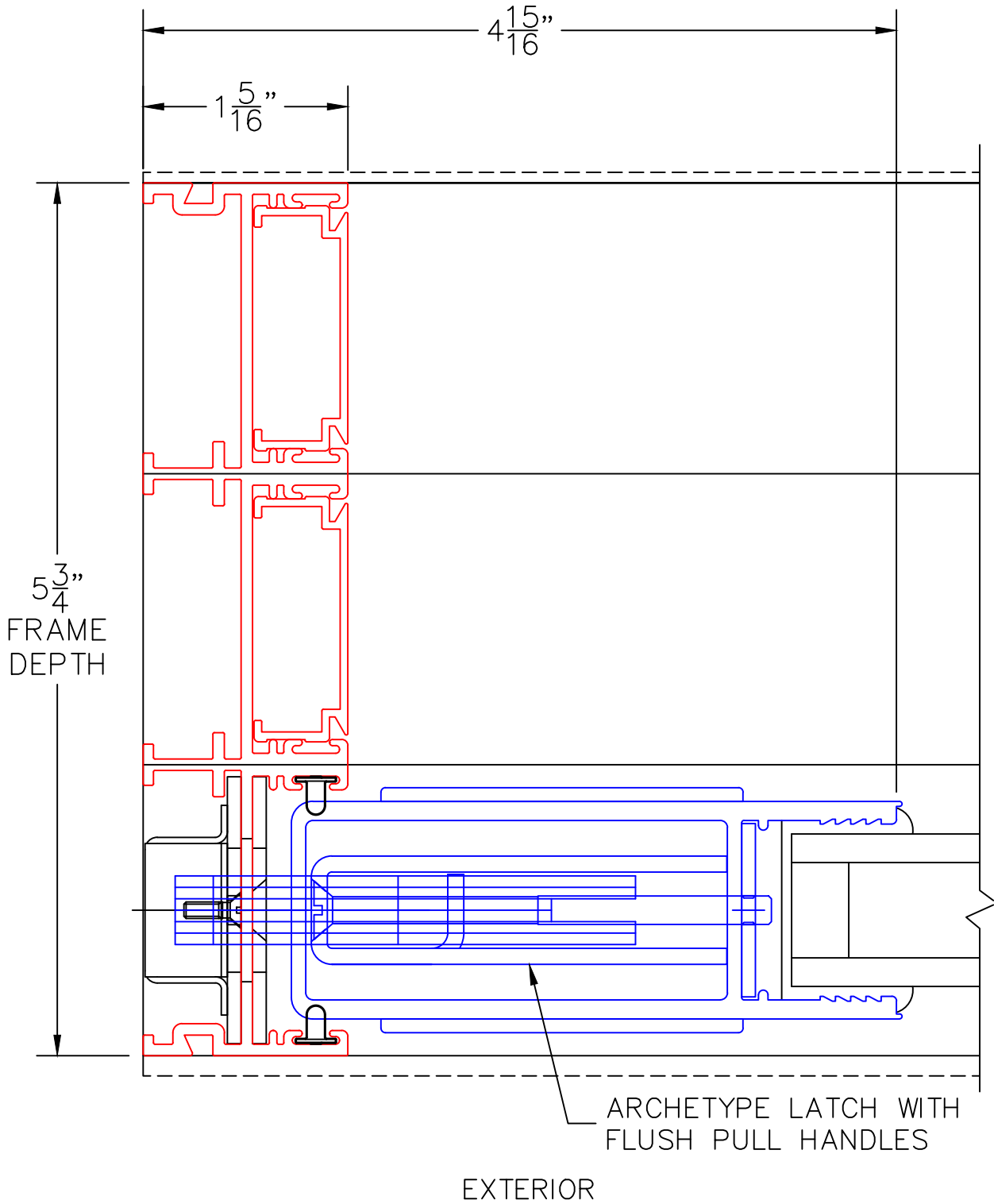


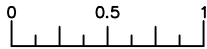
0 0.5 1
(USE RULER TO SCALE DIMENSIONS IN INCHES)
SCALE: FULL

XXX DOOR
HIDDEN TRACK

5

LOCK JAMB





(USE RULER TO SCALE DIMENSIONS IN INCHES)

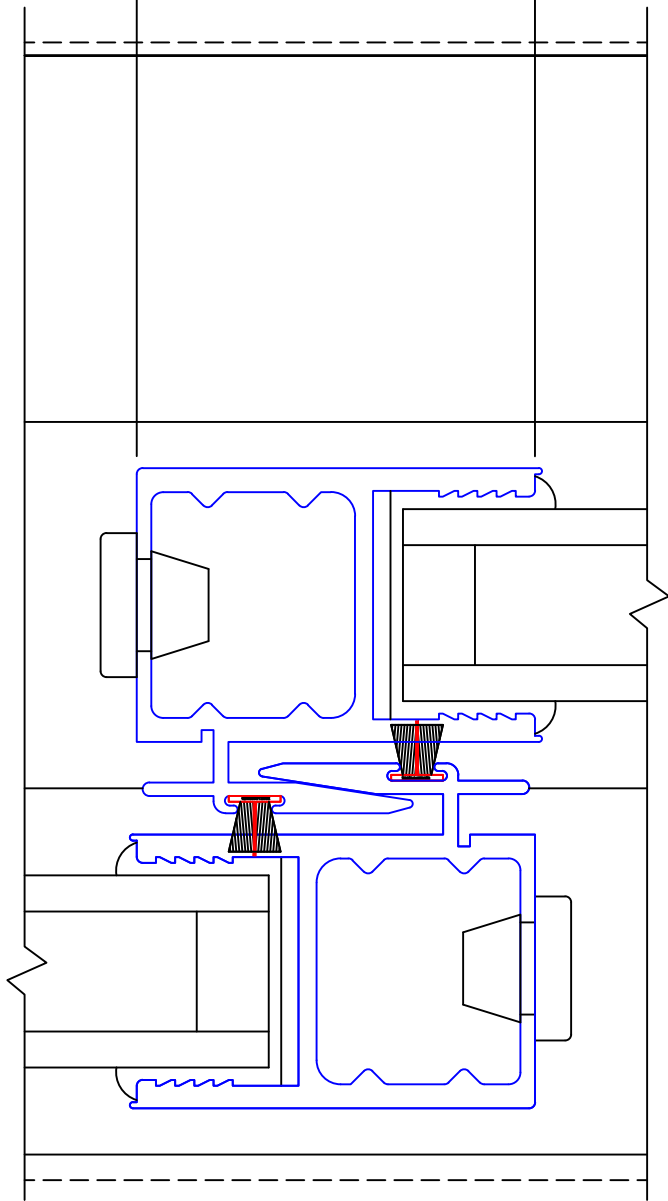
SCALE: FULL

XX DOOR
HIDDEN TRACK

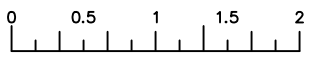
6

INTERLOCKERS

2 1/16"



EXTERIOR



(USE RULER TO SCALE DIMENSIONS IN INCHES)

SCALE: 3/4

XXXVXXP DOOR

3 13/16" FRAME DEPTH

8

90° MEETING STILES

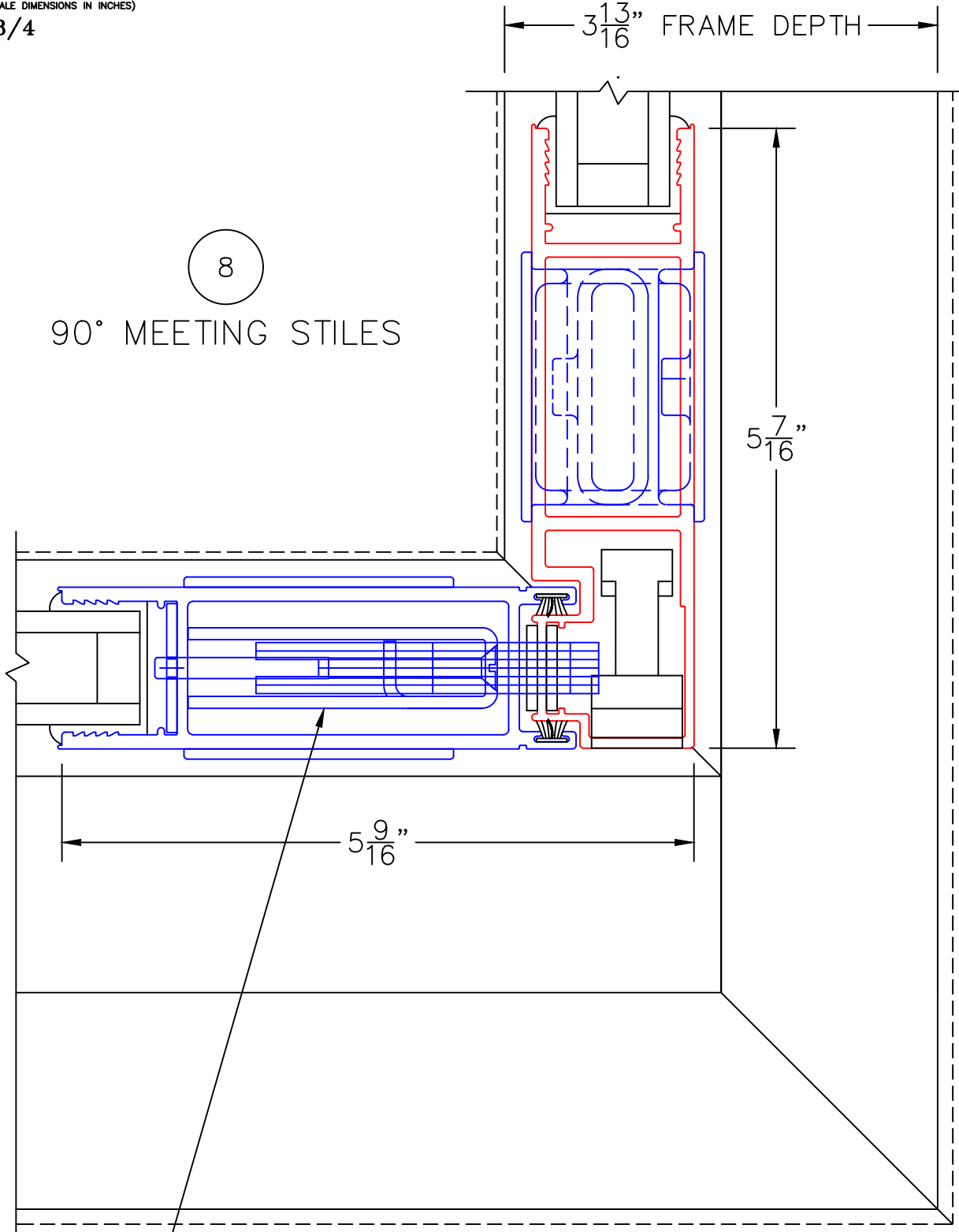
5 7/16"

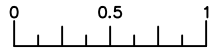
5 3/4" FRAME DEPTH

5 9/16"

ARCHETYPE LATCH WITH FLUSH PULL HANDLES

EXTERIOR





(USE RULER TO SCALE DIMENSIONS IN INCHES)

SCALE: FULL

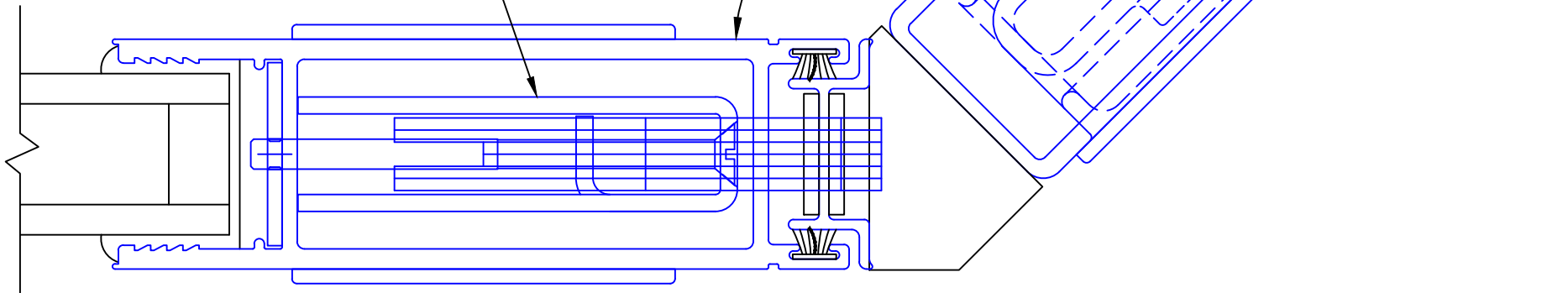
XXXVXXP DOOR

8A

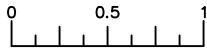
135° MEETING STILES
(CUSTOM ANGLES
AVAILABLE)

ARCHETYPE LATCH WITH
FLUSH PULL HANDLES

135°



EXTERIOR



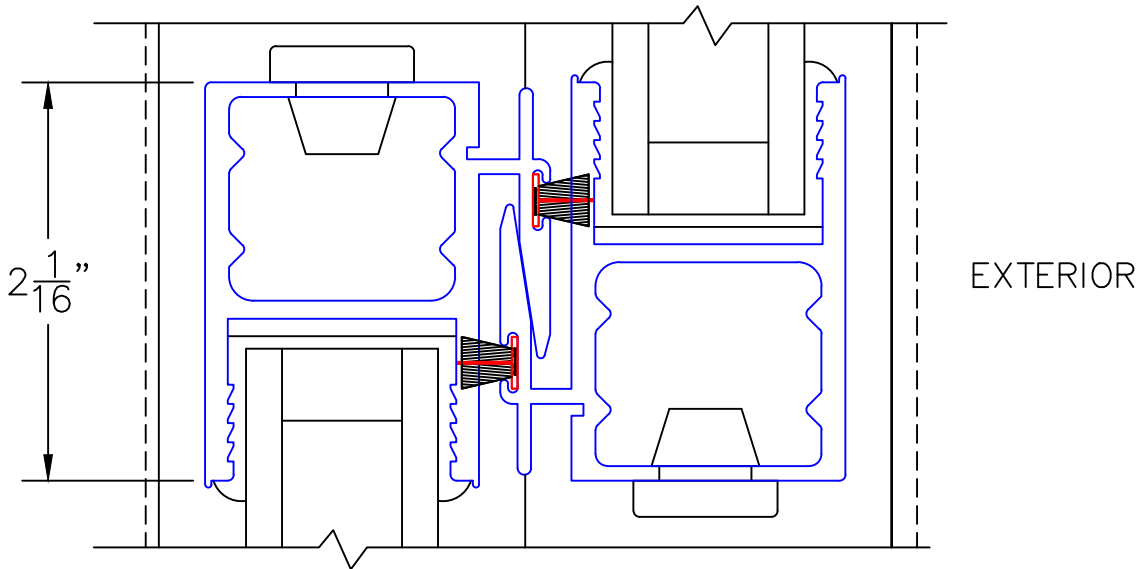
(USE RULER TO SCALE DIMENSIONS IN INCHES)

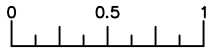
SCALE: FULL

XXP DOOR

9

INTERLOCKERS





(USE RULER TO SCALE DIMENSIONS IN INCHES)

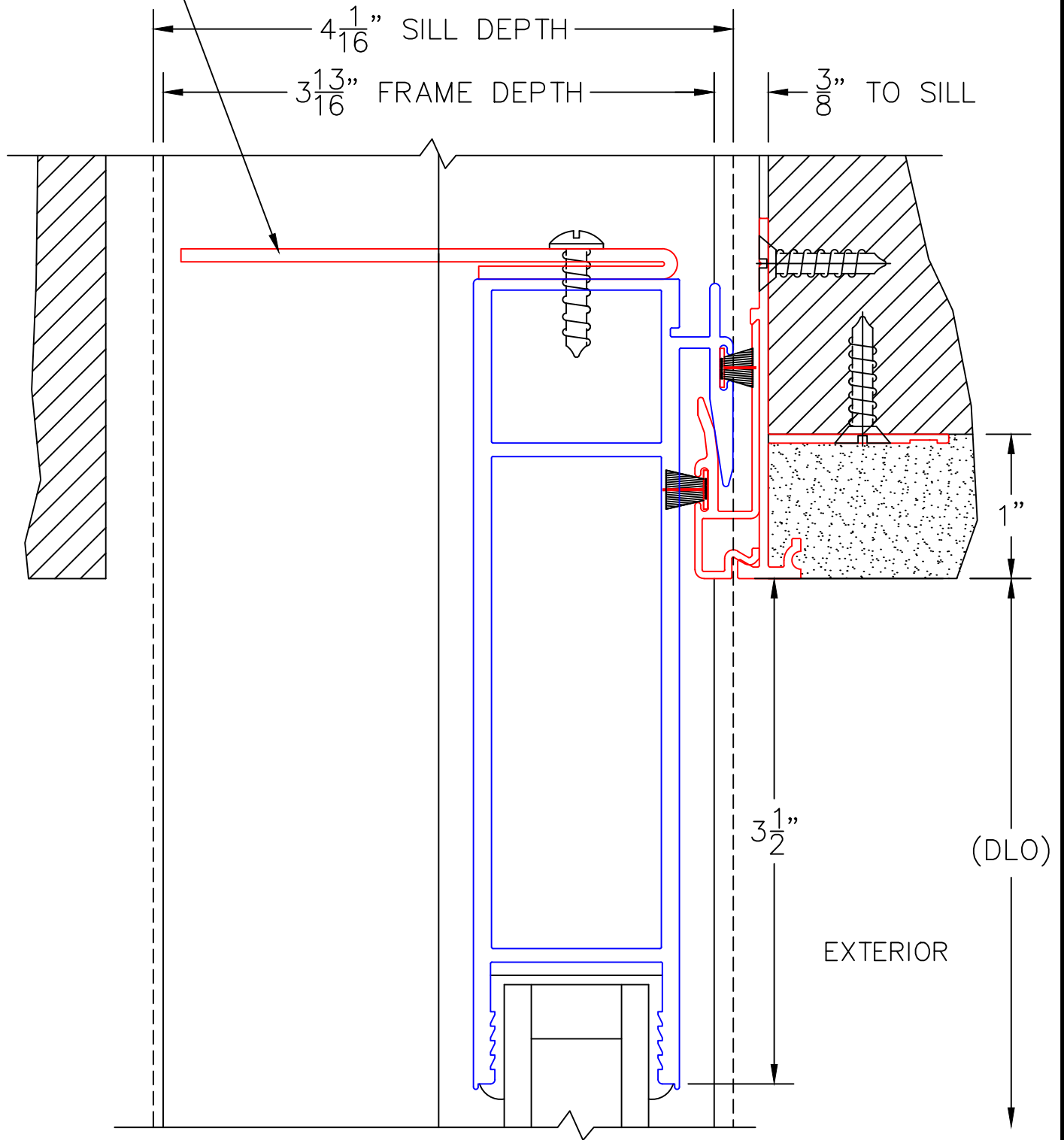
SCALE: FULL

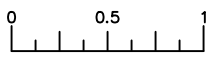
XXP DOOR

10

POCKET
CLOSER

TWO-PIECE POCKET
INTERLOCKER





(USE RULER TO SCALE DIMENSIONS IN INCHES)

SCALE: FULL

XXP DOOR

11

POCKET
JAMB

