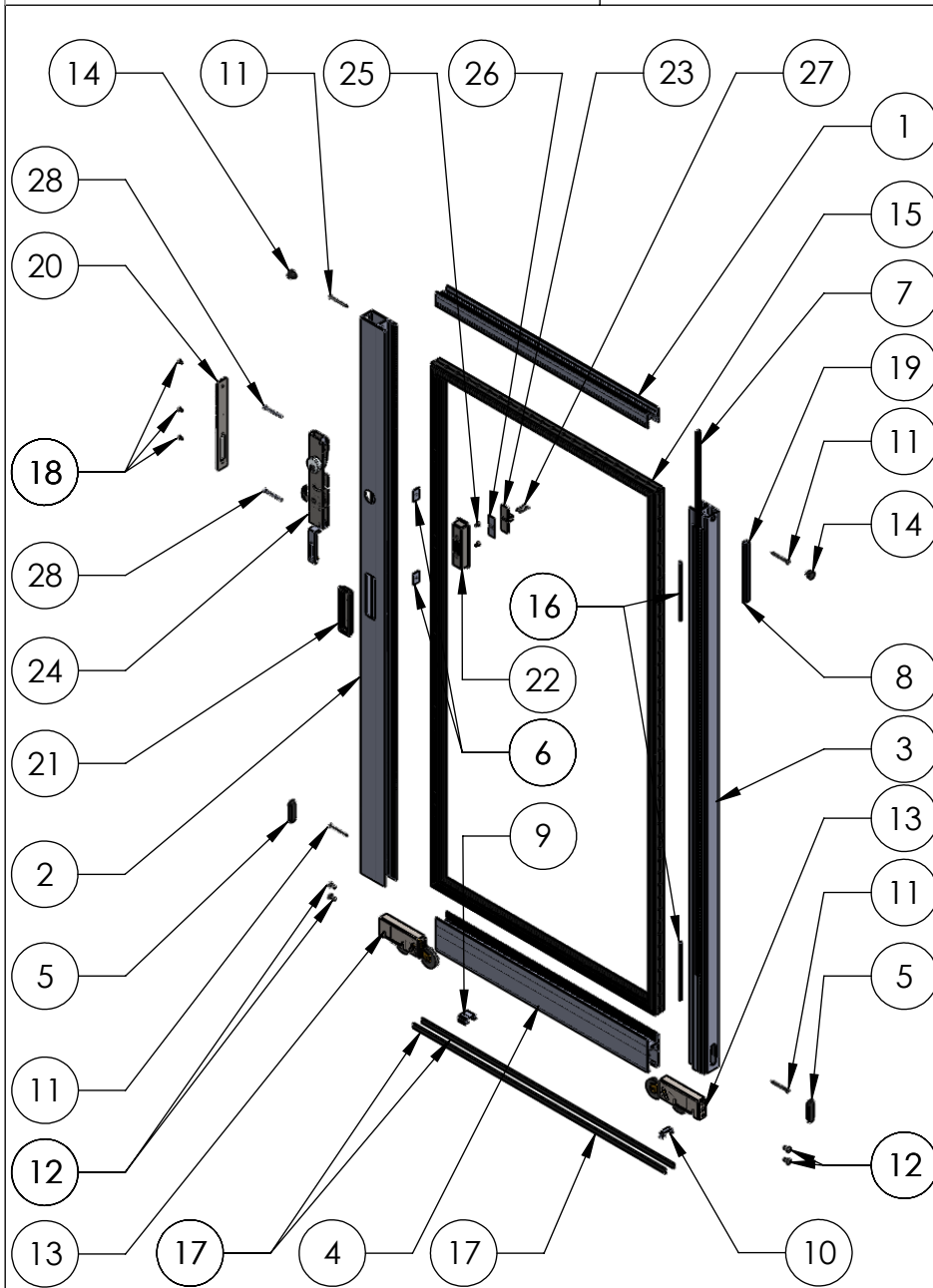




ASSEMBLY / PARTS LIST (B.O.M.)



ITEM NO.	PART NUMBER	DESCRIPTION	QTY.
1	3004	Std Top-Rail	1
2	3005	Std Lock Stile	1
3	3006	Std Post-Interlocker	1
4	3009	Int Sliding B-Rail	1
5	18630	Oval Panel Plug	2
6	18671	Lock Tab #10-32, .075 thk	2
7	19117	Large Fin Seal (29027045bkqb)(7578)	1
8	19120	Q-Lon (U5212)	1
9	19141	.930 Length Bottom Vent Clip	1
10	19141	.393 Length Bottom Vent Clip	1
11	20355	#10 PHP -A, 2", SS, Clear	4
12	20358	#1/4-20 PHP - B, 3/4", SS, Clear	4
13	20514	Precision Roller Assy	2
14	20635	Small Round Door Bumper	2
15	22909	1" Glazing Vinyl	1
16	22927	Screen Spline .250 / FT	2
17	23213	Bottom Vent Weatherstrip	2
18	24076	#8-32 FHS, 3/8" Long, Hex Countersunk Screw (Stainless Steel)	3
19	24653	Air Barrier Standard Interlock 6"	1
20	25309	Archetype Narrow Latch Face Plate	1
21	25310, 25311, 25312	Archetype Narrow Flush Ext. Pocket (Silver, Black, Stainless Steel)	1
22	25313, 25314, 25315	Archetype Narrow Flush Int. Pocket (Silver, Black, Stainless Steel)	1
23	25316, 25317, 25318	Archetype Narrow Flush Actuator (Silver, Black, Stainless Steel)	1
24	25319	Archetype Narrow Flush Latch (XO)	1
25	25324, 25325, 24076	#8-32 FHS, 3/8" Long, Hex Countersunk Screw (Silver, Black, Stainless Steel)	2
26	25326	Slider Friction Pad	1
27	25327, 25328, 25329	#6-32x7/8" Hex Socket Head Cap (Silver, Black, Stainless Steel)	2
28	25349	#10-32, 2" Long, Flat Head Phillips Machine Screw (Stainless Steel)	2

PROPRIETARY AND CONFIDENTIAL

THE INFORMATION CONTAINED IN THIS DRAWING IS THE SOLE PROPERTY OF FLEETWOOD WINDOWS & DOORS.
ANY REPRODUCTION IN PART OR AS A WHOLE WITHOUT THE WRITTEN PERMISSION OF FLEETWOOD WINDOWS & DOORS IS PROHIBITED.

TITLE: 1050 X-Panel (XO)	
DWG. NO. Series_1050_Assembly_X- Panel (XO)_Part List	REV
DATE: 1/12/14	SHEET 1 OF 1