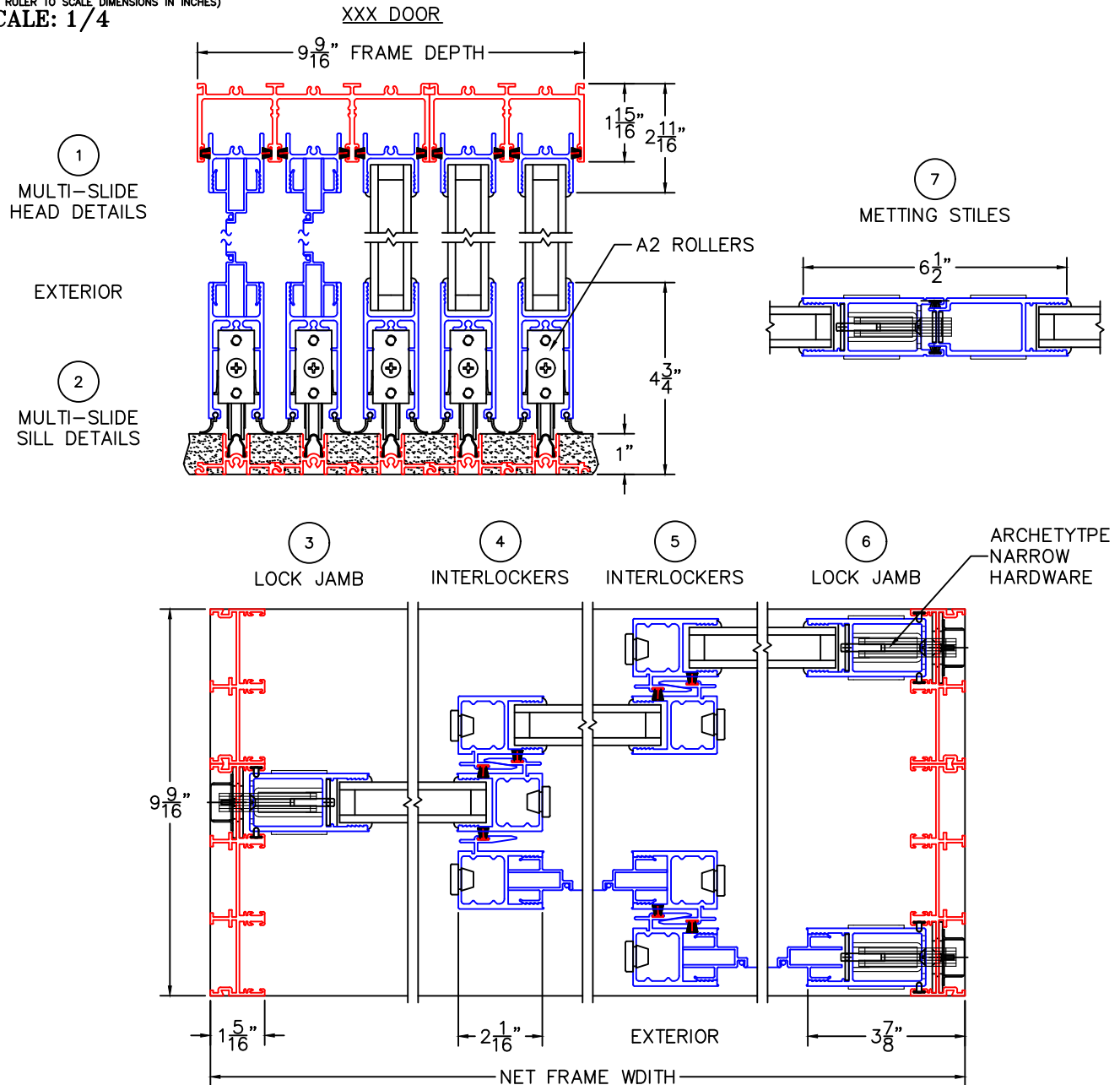
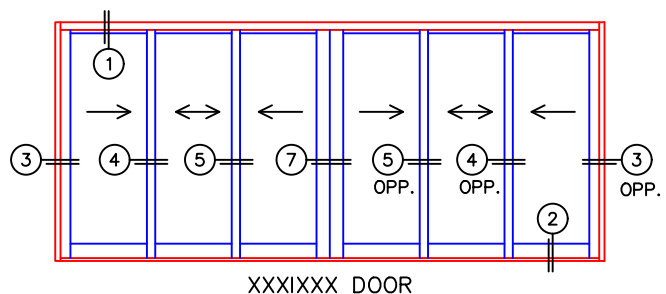
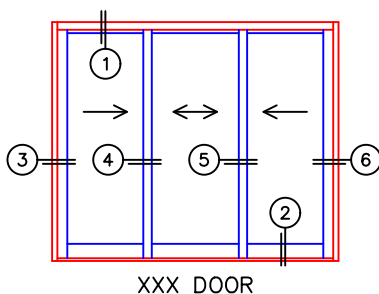


MULTI-SLIDE DOOR W/SCREENS DETAILS

(USE RULER TO SCALE DIMENSIONS IN INCHES)
SCALE: 1/4

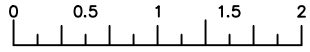


NOTE: CENTERLINES ARE NOT DIVIDED EQUALLY; CONFIRM CENTERLINES WHEN REQUIRED.



-GLASS PENETRATION: 11/16"
-FOR ADDITIONAL OPTIONS AND UPGRADES
SEE DRAWINGS 1050-07

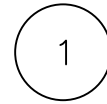
NOTE: PANELS DO NOT FLUSH STACK



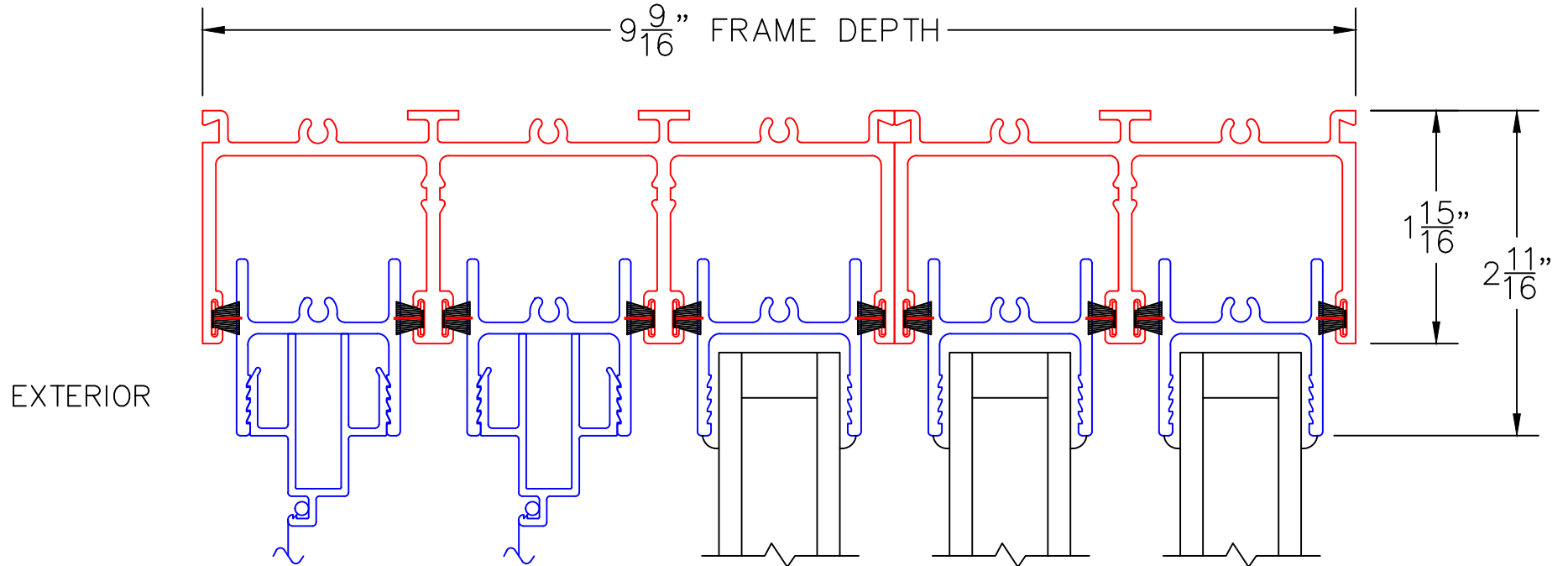
(USE RULER TO SCALE DIMENSIONS IN INCHES)

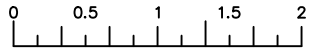
SCALE: 3/4

XXX DOOR
HIDDEN TRACK



MULTI-SLIDE
HEAD DETAILS





(USE RULER TO SCALE DIMENSIONS IN INCHES)

SCALE: 3/4

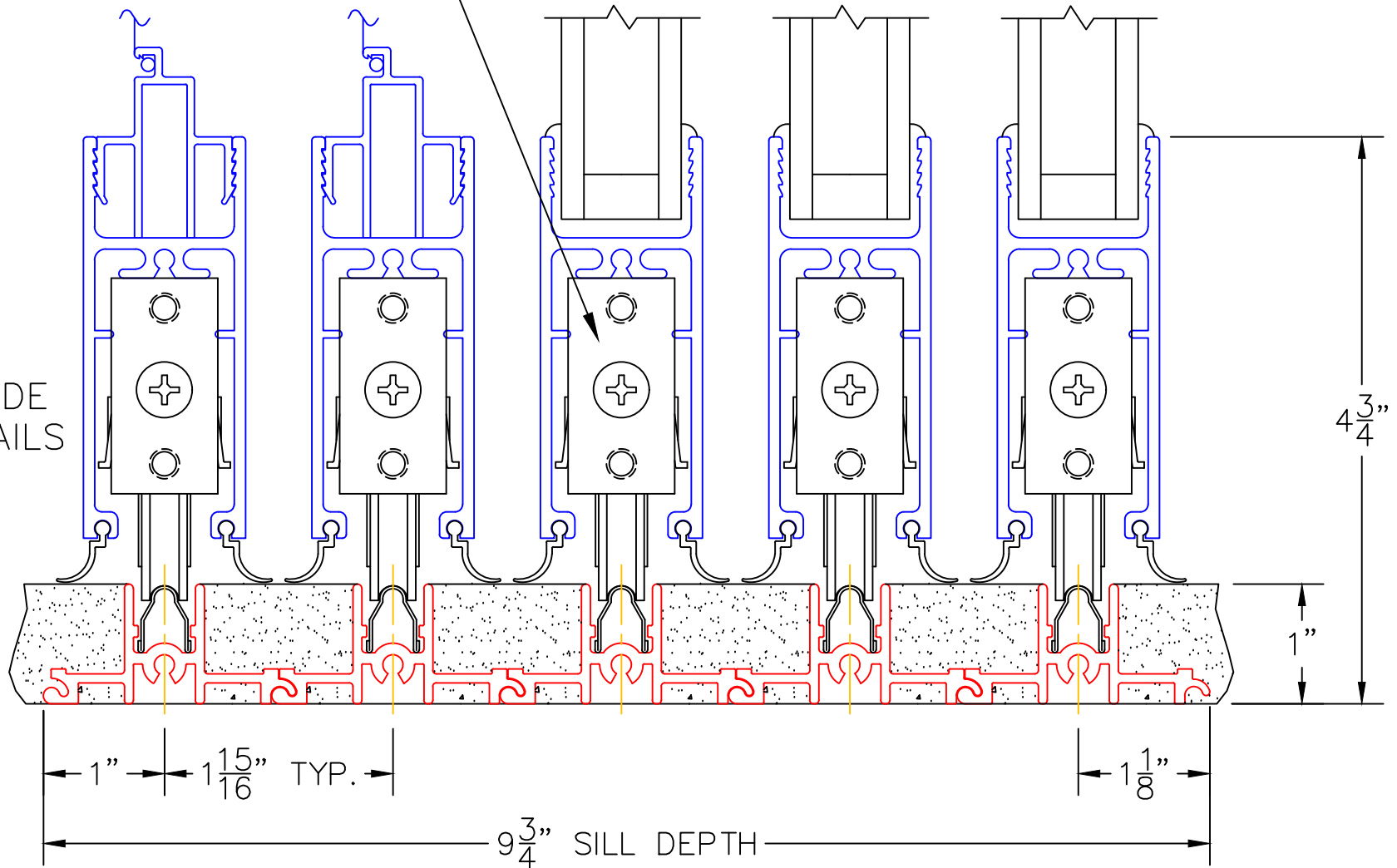
XXX DOOR HIDDEN TRACK

A2 ROLLERS

EXTERIOR

2

MULTI-SLIDE
HEAD DETAILS

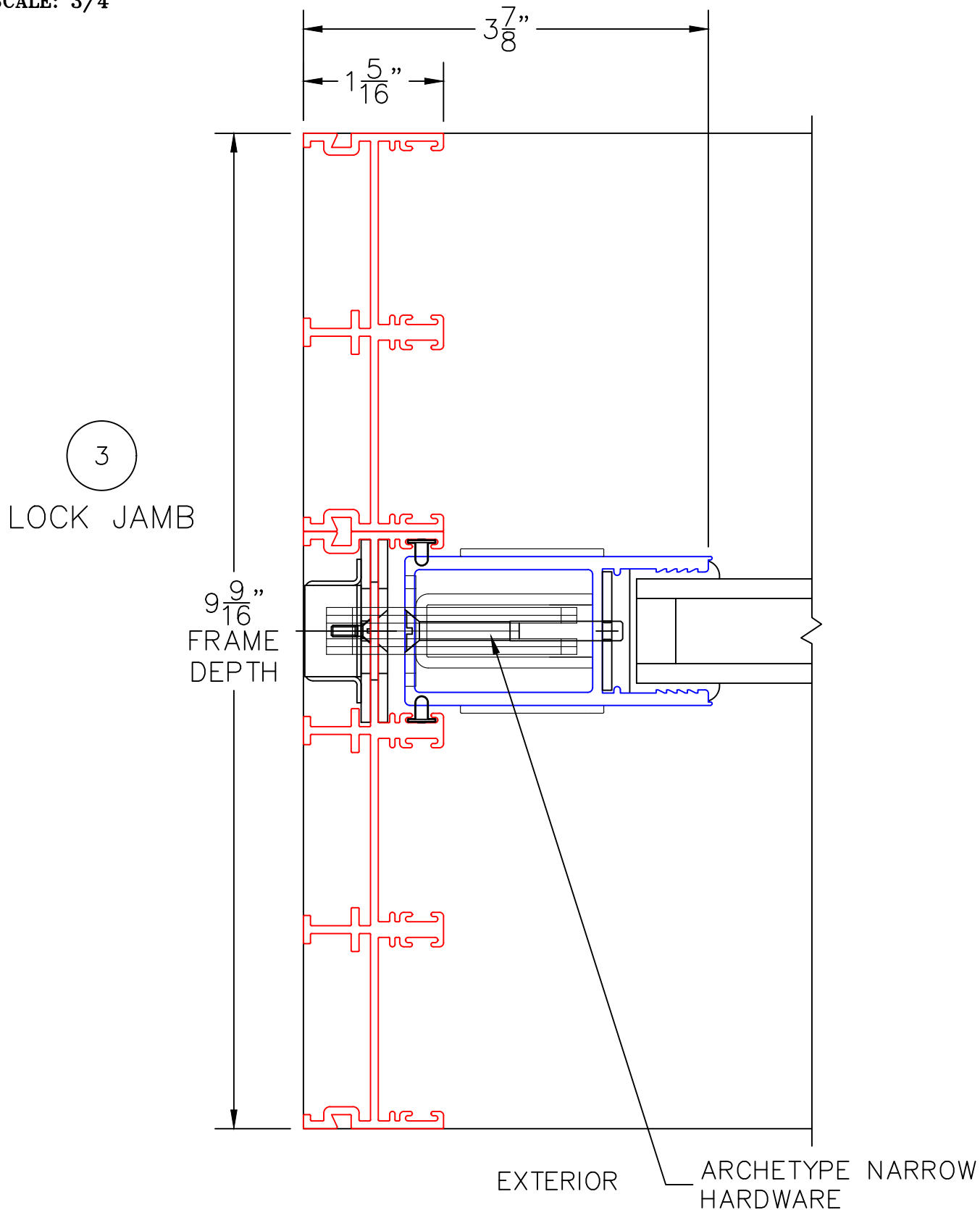




(USE RULER TO SCALE DIMENSIONS IN INCHES)

SCALE: 3/4

XXX DOOR
HIDDEN TRACK





(USE RULER TO SCALE DIMENSIONS IN INCHES)

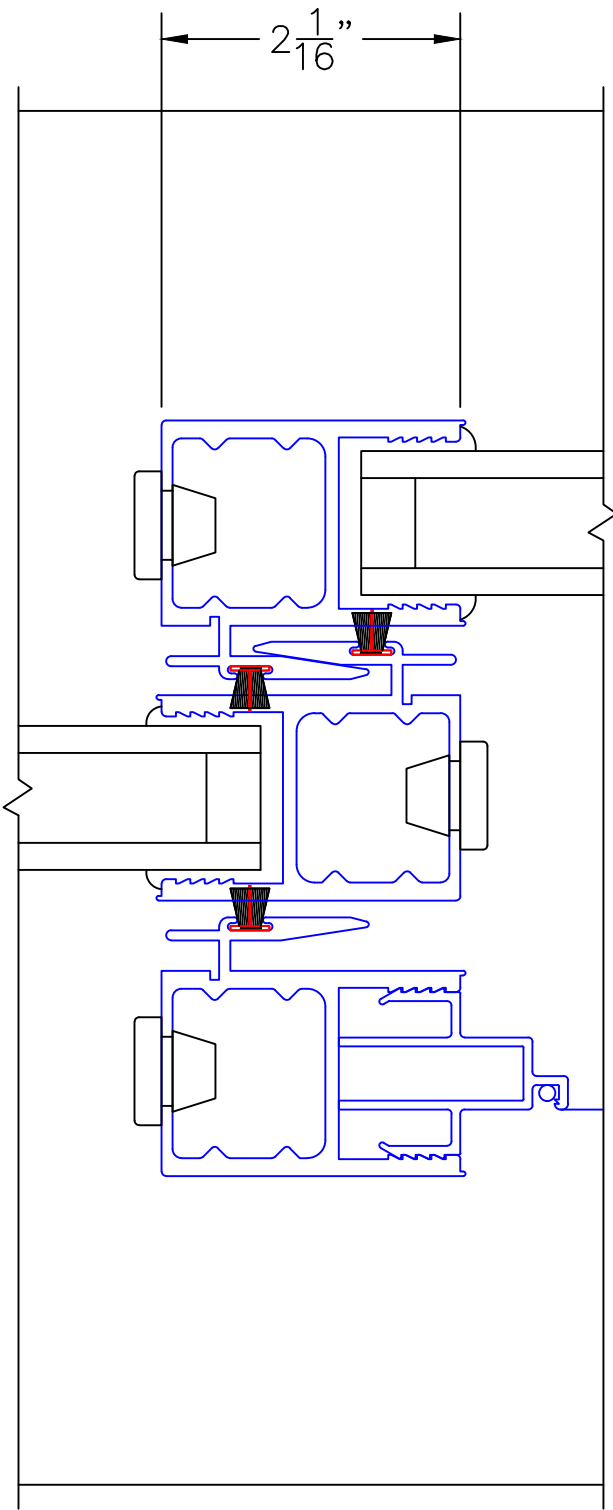
SCALE: 3/4

XXX DOOR
HIDDEN TRACK

2 1/16"

4

INTERLOCKERS



EXTERIOR

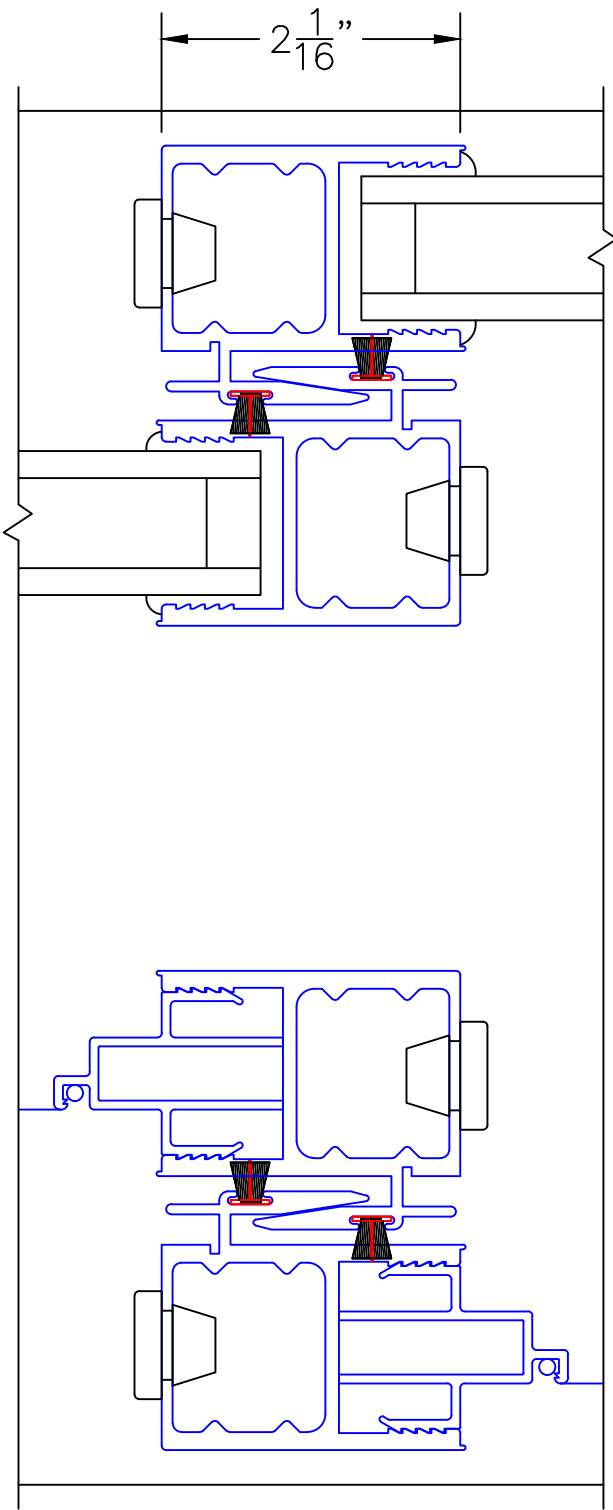


(USE RULER TO SCALE DIMENSIONS IN INCHES)

SCALE: 3/4

XXX DOOR
HIDDEN TRACK

2 1/16"



5

INTERLOCKERS

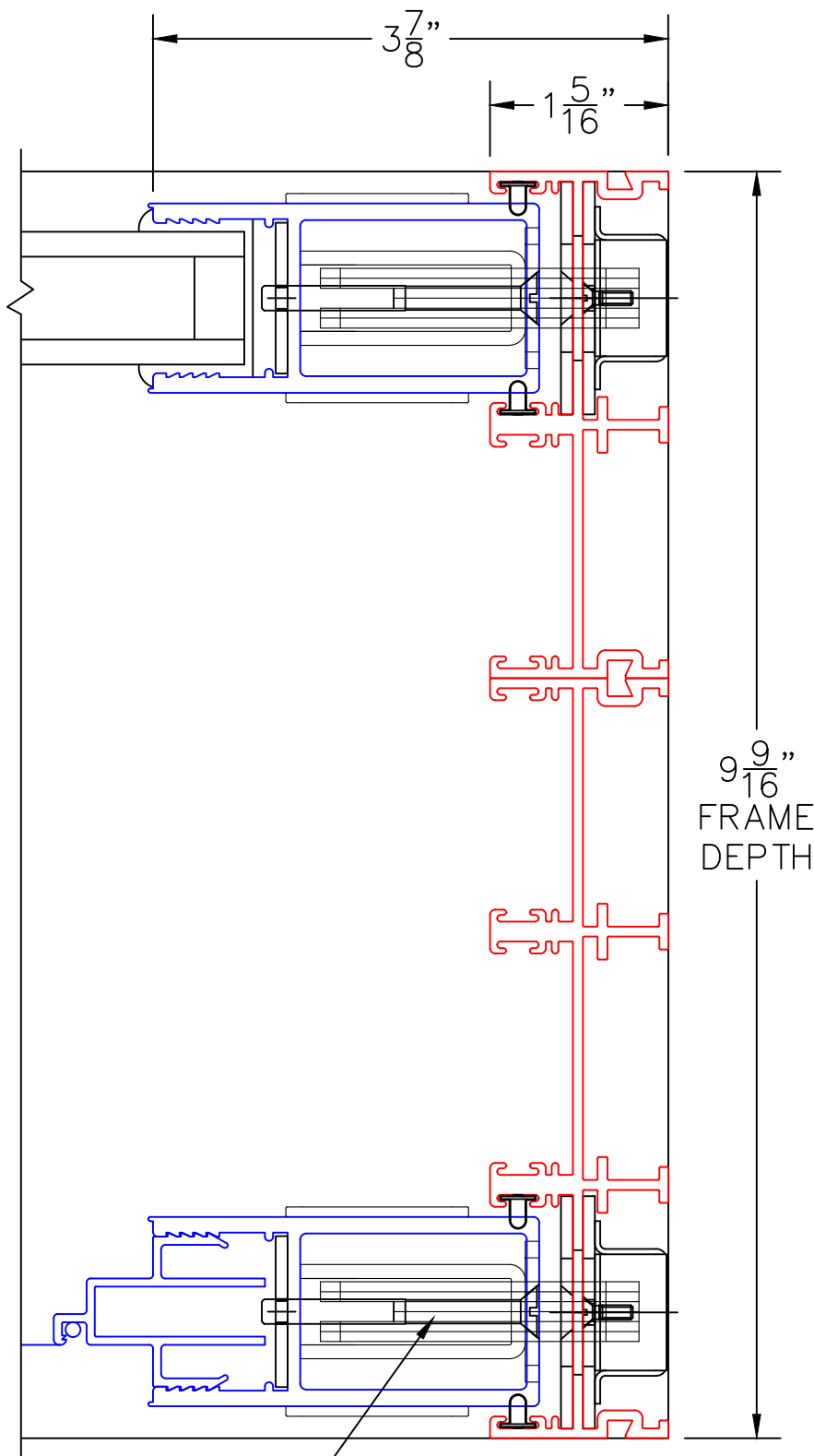
EXTERIOR



(USE RULER TO SCALE DIMENSIONS IN INCHES)

SCALE: 3/4

XXX DOOR
HIDDEN TRACK



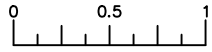
6

LOCK JAMB

9 9/16"
FRAME
DEPTH

ARCHETYPE NARROW
HARDWARE

EXTERIOR



(USE RULER TO SCALE DIMENSIONS IN INCHES)

SCALE: FULL

XXX DOOR HIDDEN TRACK

7

MEETING STILES

